

NEXT GEN
PRODUCTS



C.R.I. PUMPS
Pumping trust. Worldwide.

Smart Pump for Smart People



Pressure Booster System | i-Smart Pump | Wastewater Pumps | Swimming Pool Pumps



Vision, Mission & Values

To be the industry leader providing best-in-class fluid management solutions to individual and institutional customers and societies in our chosen markets.

We will achieve this through our dedicated efforts to enhance the welfare of all our stakeholders and by living by our values of commitment, reliability and innovation.



About C.R.I. Business

Commitment - Reliability - Innovation : C.R.I. has evolved itself as a key player in the world's pump industry with an unbeatable presence in fluid management systems. From Pumps, Motors, IoT Drives & Controllers, Pipes, Wires & Cables, Solar Pumps and Controllers, we have meticulously carved every single product involved in fluid management and delivered to our millions of happy customers. With 9000+ products, we cater to the flow management needs across various industries like Solar, Waste Water, Building, Pharma, Oil & Gas, Chemical, Power, Machine Tool, Paper & Pulp, Mining, Process Industries, Agriculture, Residential, Community Water Supply, Food & Beverage applications. We have strong foothold in 120+ countries and fully owned 15 subsidiaries, all of which stand witness to our indomitable spirit to continue to be the leader in the fluid management systems.

Unique features of C.R.I.

- C.R.I. has 50+ years of expertise in the field of engineering.
- C.R.I. functions globally with over 20000 Outlets & 1500 Service centres.
- One among the few leaders in the industry to produce 100% stainless steel pumps.
- C.R.I boasts fully equipped facilities with state-of-the-art machinery, cutting edge technology & techniques in the manufacturing process.
- C.R.I has earned Indian & International Quality certifications like CE, CSA, TSE, NSF, ISI, ISO 9001, ISO 14001, and OHSAS 18001.
- C.R.I. is the top exporter in India and the winner of EEPC (Engineering Export Promotion Council) award 16 times.
- The company also won National Energy Conservation (NEC) award for seven times from the Government of India.
- The R&D division of C.R.I. namely "Fludyn Advanced Technology Centre" is recognized by the Ministry of Science & Technology, Govt. of India.
- The Foundry of C.R.I is fully mechanized & automated with state-of-the-art technology.

NEXT GEN PRODUCTS

C.R.I. offers a wide range of Next Gen products for Special Applications includes Intelligence Smart Mini pumps i-Smart with 5 in 1 Features, Sewage and Drainage Pumps for waste water applications, Pressure Booster for even water pressure at home, Stainless Steel Monoblock pumps are used for Hygiene Water Supply, Circulatory pumps are used to circulate hot / cold water with adequate pressure, Swimming pool pumps are used for water filtration and recycling purposes. These pumps are combo package for customised needs and it is precisely designed for hassle free performance.

- **Pressure Booster System - BRISK, MHBS, TINY FORCE**
- **Automatic Pump Controller - APC**
- **i-SMART - Self Priming Monoblock Pumps**
- **Stainless Steel Centrifugal Monoblock Pumpsets - CTSS/JTS**
- **Wastewater Pumps - MS, MP, DL, SL, SLC, SMB**
- **Circulatory Pumps**
- **Swimming Pool Pumps - VISTA & NOVA**

Pressure Booster System BRISK / MHBS / TINY FORCE

C.R.I. Pressure Booster system has a complete combo package for water pressure boosting and it is precisely designed for hassle free performance. The complete system developed to preserve constant water pressure in all outlets, whenever pressure drops/attains to the desired level, pump will Start/Stop automatically. Over all compactness of the pressure boosters consumes lesser space and quality assured components were used for high accuracy, so that noise level will be in limit. We could proudly say, C.R.I. Pressure Boosters are "Fit and Forget" products.

The system consists of pump, non-return valve, pressure switch, pressure gauge, Y-Strainer, float switch and pressure tank. As the Y-Strainer included in the system, the entry of foreign particles are avoided and thus the system life is extended.

Applications

- Residential Buildings • Industries • Hotels
- Hospitals • Apartments • Bungalows

Salient Features

- Ensures even pressure at all the water outlets.
- Automatic pump ON & OFF operation based on water consumption.
- In-built thermal overload protector.
- Lesser running cost than the conventional systems.
- Factory tested system and supplied as a package.

Specifications

	BRISK	MHBS
Power ranges upto	1 HP	1.5 HP
Flow upto	3.8 m ³ /hr	8 m ³ /hr
Maximum pressure upto	5 bar	5.5 bar
Liquid temperature	90°C*	90°C*

* Applicable only for Special Mechanical Seal

Pressure
is PLEASURE



BRISK

MHBS

Performance Data

BRISK SERIES

2880 RPM, Single Phase - 220 - 240 Volts 50Hz, A.C. Supply. **with 24 litres tank**

Model	Power		Head in Metre	Flow (m ³ /hr)								Suction Size (mm)	Delivery Size (mm)	Approx. Recommendation				
	kW	HP		0	0.8	1.5	2	2.4	2.8	3.2	3.5			3.7	3.8	BHK	No of Bath rooms	No of Taps
BRISK-2E/03	0.37	0.5		30	27	23	21	18	15	11			25	25	1	1	3	
BRISK-2E/04	0.55	0.75		40	37	33	29	25	20	16	13	9		25	25	1	2	6
BRISK-2E/05	0.75	1		50	46	42	37	33	28	23	19	14	9	25	25	2	3	9

* BRISK models are available with Float Switch and Non Float Switch.

MHBS SERIES

2880 RPM, Single Phase - 220 - 240 Volts 50Hz, A.C. Supply. **with 24 litres tank**

Model	Power		Head in Metre	Flow (m ³ /hr)					Suction Size (mm)	Delivery Size (mm)	Approx. Recommendation				
	kW	HP		0	1.0	1.5	2.0	2.5			3.0	3.5	BHK	No of Bath rooms	No of Taps
MHBS-2E/03	0.30	0.40		27	24	23	21	18.5	16	12.5	25	25	1	1	3
MHBS-2E/04	0.37	0.50		37	33	32	29	26	22	17.5	25	25	1	2	6
MHBS-2E/05	0.45	0.60		47	43	40	37	33	27.5	21.5	25	25	2	3	9
MHBS-2E/06	0.55	0.75		55	50	47.5	43.5	38.5	32.5	26.5	25	25	3	4	12

Model	Power		Head in Metre	Flow (m ³ /hr)						Suction Size (mm)	Delivery Size (mm)	Approx. Recommendation				
	kW	HP		0	2	3	4	5	6			7	8	BHK	No of Bath rooms	No of Taps
MHBS-5/04	0.55	0.75		35	31	28.5	26	23	18	16	12	25	25	3	4	12
MHBS-5/05 *	0.75	1.0		45	40	38	34	31	24	22	15	25	25	3	4 - 5	15
MHBS-5/06 *	1.1	1.5		54	49.5	47	43	38	30	22	20	25	25	4	5 - 6	18

* Marked models available in **35 ltr tank** also

Specifications

TINY FORCE	
Power ranges	0.5 HP
Flow upto	2.2 m ³ /hr
Maximum pressure upto	3 bar
Liquid temperature	33°C



Performance Data

TINY FORCE SERIES

2880 RPM, Single Phase - 220 - 240 Volts 50Hz, A.C. Supply. with 2 litres tank

Model	Power		Head in Metre	Flow (m ³ /hr)													Suction Size (mm)	Delivery Size (mm)	Approx. Recommendation			
	kW	HP		0.4	0.7	0.8	0.9	1.1	1.3	1.4	1.5	1.6	1.7	1.9	2.0	2.1			2.2	BHK	No of Bath rooms	No of Taps
TINY FORCE 50	0.37	0.5			25		21	18	15		12		10	8		6		25	25	1	1	3
TINY FORCE 51	0.37	0.5		30		25		21		18		15		12	10	8	6	25	25	1	1	3

MOC - Pumpset

Part Name	Material
Pump Shell	SS 304
Suction & Discharge Chamber	Cast Iron
Rotor	Aluminium Die Cast
Motor Body	Aluminium Extruded
Motor Shaft	SS 410
Impeller	SS / High Tensile Brass / Noryl
Mechanical Seal	Silicon vs Carbon vs EPDM / Ceramic vs Carbon vs NBR

Automatic Pump Controller - APC

CPH - 15

Automatic Pump controller unit uniquely designed to manage constant pressure and water flow throughout the system. It STARTS the pump automatically when tap is opened and STOP the pump automatically when tap is closed. so it makes the entire system effective and efficient.

To protect pump from back flow of water in build check valve is used and for dry run protection, Sensor based integrated electronics unit is used.

Applications

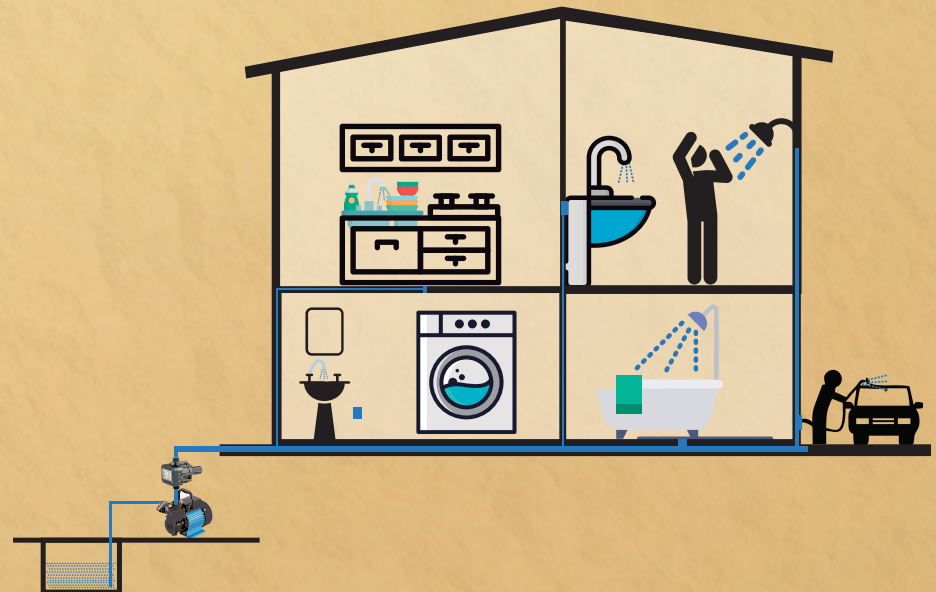
- House Watering Systems • Car Washing • Gardens • Fountains

Salient Features

- Maintain even water pressure at all outlets.
- Automatic ON & OFF operation of the pump.
- Specially designed for space constraint area.
- Dry run protection.

Specifications

Version	1Ph, 220 - 240V, A.C. Supply, 50Hz
Maximum Current	10 A
Maximum Working Pressure	10 Bar
Cut In Pressure	1.5 Bar
Cut Off Pressure	4 Bar
Degree of Protection	IP65
Max Working Temperature	33° C



i-SMART - Self Priming Monoblock Pumps with Mobile APP

CRI's new i- smart pumps are enabled with Wi-Fi connect provision for pump operation & protection. Through Wi-Fi connect, pump can be operated, and real time updates can be monitored.

i-Smart Mobile Application featured with Pump ON/OFF, Timer setting, pump protection from Dry run, Low Voltage and High voltage faults and it is entitled with Float switch which automatically runs the pump based on water utilisation and it will indicate once water is filled in the overhead tank.

Applications

- Household water applications • Small Garden • Civil application
- Pressure boosting system

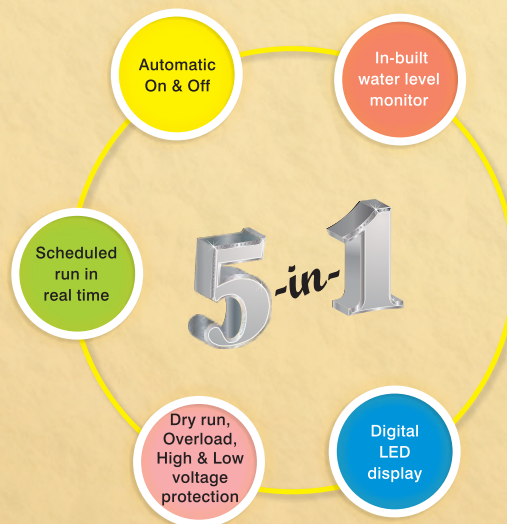
Specifications

Power Range	0.37kW (0.5HP) & 0.75kW (1HP)
Maximum Head	30 Metre
Maximum Flow	3050 LPH
Version	Single Phase 220 V, AC Supply
Pipe Size (S x D)	25 x 25 mm

Performance Data

Model	kW	HP	Type	Suction x Delivery in mm	Suction Capacity in Mtrs	Total Head in Mtr / Feet								
						6	8	10	12	15	18	21	25	30
						20	26	33	39	49	59	69	82	98
Discharge in LPH														
ISSP 50 / ISWSP 50	0.37	0.5	Self Priming	25x25	8	2088	2000	1800	1600	1400	1220	1000	760	
ISSP 100 / ISWSP 100	0.75	1	Self Priming	25x25	8	3050	2850	2650	2500	2350	2120	1900	1800	1400

ISWSP 50 and ISWSP 100 Models are available with Mobile App.



C.R.I. i-Smart Mobile App

I-SMART SERIES - 2800 RPM, Single Phase - 220 Volts, 50 Hz, A.C. Supply

Stainless Steel Centrifugal Monoblock Pumpsets

CTSS / JTS

C.R.I. S.S. Centrifugal Monoblock / Self-Priming Jet pumps are carefully designed to give best hydraulic efficiency and suction lift characteristics. Most modern and highly sophisticated machinery and technology are employed in the manufacture of these pumps, using quality raw material, seals and ball bearings to ensure long life. Dynamically balanced rotor ensures vibration free and noise free operation. All single phase pumps are in-built with thermal overload protector to prevent overload. High operating efficiency of these pumps result in low power consumption.

Applications

- Domestic
- Food Processing
- Industrial Water System
- Shallow wells
- Gardening
- Car washing
- Drinking water supply

Salient Features

- In-built thermal overload protector
- Hygienic pumping system
- Backpull-out design for easy servicing and repair



CTSS



JTS

Specifications

	CTSS	JTS
Power range	0.37 kW - 1.8 kW (0.5 HP - 2.5 HP)	0.37 kW - 1.1 kW (0.5 HP - 1.5 HP)
Maximum head	31 metre	45 metre
Maximum flow rate	12 m ³ /hr	3.75 m ³ /hr
Versions	1Ph - 220V / 3Ph - 380-415V, 50Hz, AC	1Ph - 220V / 3Ph - 380-415V, 50Hz, AC
Maximum suction lift	8 m	8 m

Performance Data

CTSS SERIES

2900 RPM, Single Phase - 220 Volts, Three Phase - 380-415 Volts 50 Hz, A.C. Supply

PUMP MODEL		MOTOR POWER		NOMINAL PUMP SIZE IN MM (Suction x Delivery)	DISCHARGE IN Ips / m³/hr											
					0	0.27	0.55	0.83	1.1	1.3	1.6	1.9	2.2	2.5	2.9	3.3
1Ø	3Ø	kW	HP		0	1	2	3	4	5	6	7	8	9	10	12
					TOTAL HEAD IN METRES											
CTSS-5/03M	CTSS-5/03T	0.37	0.5	32 x 25	16	15.5	15	14.5	13	11.5	10.5	9				
CTSS-6/05M	CTSS-6/05T	0.55	0.75	32 x 25	19.5	18	17	15.5	13.5	12.5	11	8				
CTSS-8/07M	CTSS-8/07T	0.75	1.0	32 x 25	23	22	21.5	20.5	19.5	18	17	16	14.5	13		
CTSS-7/10M	CTSS-7/10T	1.0	1.3	32 x 25	29	28	26.5	25.5	24	22.5	20.5	18.5	15.5	11.5		
CTSS-8/11M	CTSS-8/11T	1.1	1.5	32 x 25	26.5	26	25.5	25	24.5	23.5	22	20.5	19.5	18	17	
CTSS-8/15M	CTSS-8/15T	1.5	2.0	32 x 25	31	30	29	28.5	27.5	27	26	25	24.5	23	22	20.5
CTSS-10/18M	CTSS-10/18T	1.8	2.5	32 x 25	30	29.5	29	28.5	28	27.5	27	26	25	24	23	21

JTS SERIES

2900 RPM, Single Phase - 220 Volts, Three Phase - 380-415 Volts 50 Hz, A.C. Supply

PUMP MODEL		MOTOR POWER		NOMINAL PUMP SIZE IN MM (Suction x Delivery)	DISCHARGE IN Ips / m³/hr									
					0	0.1	0.3	0.4	0.6	0.7	0.8	1.0	1.04	
1Ø	3Ø	kW	HP		0	0.5	1	1.5	2	2.5	3	3.5	3.75	
					TOTAL HEAD IN METRES									
JTS-2/03M	JTS-2/03T	0.37	0.5	25 x 25	36	31	26.5	21.5	17	11	7	-	-	
JTS-3/05M	JTS-3/05T	0.55	0.75	25 x 25	38	34	31.5	28.5	26.5	23	18.5	12.5	10	
JTS-3/07M JTS-3/07MA	JTS-3/07T	0.75	1.0	25 x 25	40	37	34	32	29	26.5	23	7	10	
JTS-3/11M	JTS-3/11T	1.1	1.5	25 x 25	45	42	38.5	36	32.5	29.5	26.5	19.5	10	

JTS-3/07MA model are available with copper coated winding.

Wastewater Submersible Pumps

MS, MP, DL, SL & SLC

C.R.I. has introduced highly efficient and reliable sewage & drainage pumps in a comprehensive range. These pumps are available with different materials of construction and feature a multitude of applications in waste water handling and treatment.

All C.R.I. sewage & drainage pumps are perfectly powered by motor designed to deliver optimal performance and to with stand weather and power fluctuation.

Applications

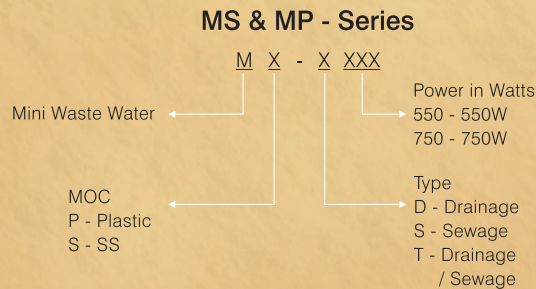
- Draining sewage water from hotels, houses, commercial buildings, complexes etc.
- Pumping waste water in industries • Pumping municipal sewage water • Septic tanks

Salient Features

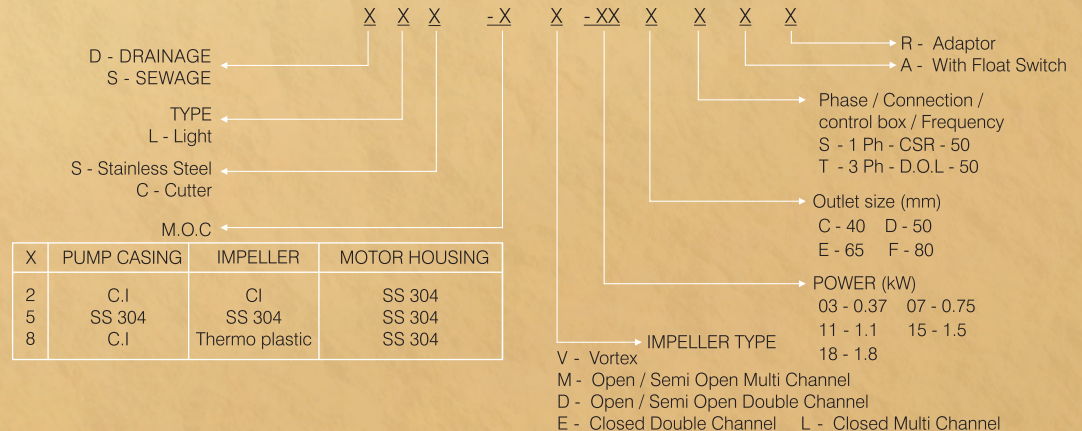
- Non clogging impellers ensures free flow of solids
- Cutter design yields fine solids for non clogging operation
- Corrosion resistant Stainless Steel 304 Grade Pump portion ensures longer life
- Plastic & SS body with Heavy Construction and Shock Proof
- Motor is designed with Self Cooling Effect
- Epoxy Potted water proof cables
- Prevention from dry run
- Efficient pumps with more energy savings
- Automatic ON/OFF operation ,enabled by adjustable float switch



Model Identification Code



DL, SL, SLC Series



Specifications

	MS & MP Series	DL - Series	SL - Series	SLC - Series
Power Range	0.5-0.75kW (0.75-1 HP)	0.5-1.5 kW (0.75-2 HP)	0.5-2.2 kW (0.75-3 HP)	1.1-1.8 kW (1.5-2.4 HP)
Speed	2900 rpm			
Version	Single Phase 230V; Three Phase 380 - 415V; 50Hz A.C. Supply			
Degree of Protection	IP 68			
Insulation Class	E / B / H			
Motor Type	Dry - type			
Duty	S1 (Continuous)			
Direction of Rotation	Clockwise			
Max. Immersion Depth	5m			
Sealing	Mechanical Seal			
Impeller Type	Closed Multi Channel	Closed Multi Channel Semi Open Double Channel	Vortex	Vortex Semi Open Double Channel
Max. Ambient Temp.	40°C			
Delivery Size (mm)	32 & 40mm	32, 50mm	40, 50, 65mm	50, 80mm
Solid handling capacity	Upto 25mm	-	Upto 55mm	-
Max. Head	8.2 mtrs	20 mtrs	18 mtrs	12 mtrs
Max. Flow	10 m ³ /hr	25.2 m ³ /hr	43.2 m ³ /hr	20 m ³ /hr

Impeller Type

					
Vortex	Semi open single channel	Semi open double channel	Semi open multi channel	Closed double channel	Closed multi channel

Performance Data

MS, MP, DL, SL, SLC SERIES

2900 RPM, Single Phase - 220 Volts, Three Phase - 380-415 Volts 50 Hz, A.C. Supply

Model	kW	HP	Outlet size (mm)	m ³ /hr	0	1	2	3	4	5	6	7	8	9	10	Solid Handling Capacity in mm	Weight in kg
MS-S550	0.55	0.75	40	Head in Metre	7	6.8	6.5	6.2	5.8	5	5.5	5.2	4.5	4		25	6
MS-S750	0.75	1	40		8	7.6	7.5	7	6.8	6.2	5.8	5.4	4.3	4	3.3	25	6.3
MS-D750	0.75	1	32		8.2	7.8	7.5	7	6.2	5.8	5	4.5	3.8	2.5		-	5.6
MP-T550	0.55	0.75	40		7	6.8	6.6	6.4	6	5.8	5.6	5.2	4.5	4		25	4.5
MP-T750	0.75	1	40		8	7.8	7.6	7.4	7	6.5	6	5.5	5	4	2.7	25	5

Model	kW	HP	Outlet size (mm)	m ³ /hr	0	2.5	5	7.5	9.4	10	12.5	13.8	Weight in kg
DL-8L-07DS	0.75	1	50	Head in Metre	20	19.5	19.2	18.5	17.5	16	14.5	12.8	17.5

Model	kW	HP	Outlet size (mm)	m ³ /hr	0	2.5	5	7.5	10	12.5	15	17.5	18.75	20	22.5	Weight in kg
DL-2L-15DT	1.5	2	50	Head in Metre	20	19.5	19.2	19	18.8	18.5	18	17	16	15.5	14	22

Model	kW	HP	Outlet size (mm)	m ³ /hr	0	3.6	7.2	10.8	Weight in kg
DL-2V-05BS-A	0.55	0.75	32	Head in Metre	11	10.6	9.7	7.9	16
DL-2V-05BT	0.55	0.75	32		11	10.6	9.7	7.9	16

Model	kW	HP	Outlet size (mm)	m ³ /hr	0	3.6	7.2	10.8	14.4	18	21.6	25.2	Weight in kg	
DL-2V-07DS-A	0.75	1	50	Head in Metre	10	9.4	8.7	7.8	6.8	5.9			18	
DL-2V-07DS	0.75	1	50		10	9.4	8.7	7.8	6.8	5.9				18
DL-2V-07DT	0.75	1	50		10	9.4	8.7	7.8	6.8	5.9				18
DL-2V-11DS-A	1.1	1.5	50		11	10.8	10.5	10.4	9	8.2	6.8			21.5
DL-2V-11DT	1.1	1.5	50		11	10.8	10.5	10.4	9	8.2	6.8			21.5
DL-2V-15DS-A	1.5	2	50		14	13.7	13.3	12.7	11.9	11.1	10.1	9		21.5
DL-2V-15DT	1.5	2	50		14	13.7	13.3	12.7	11.9	11.1	10.1	9		21.5

A - are available with Float Switch.

Performance Data

Model	kW	HP	Outlet size (mm)	m³/hr	0	2.5	5	7.5	10	12.5	15	Solid Handling Capacity in mm	Weight in kg
SL-2D-07CS	0.75	1	40	Head in Metre	18	17.5	16.5	15	14.5	13	12.5	25	22
SL-2D-07DS	0.75	1	50		14	13.5	12.8	11.3	11	9.5	8	35	22

Model	kW	HP	Outlet size (mm)	m³/hr	0	3.6	7.2	10.8	14.4	18	21.6	25.2	28.8	Solid Handling Capacity in mm	Weight in kg
SL-2V-05CS-A	0.55	0.75	40	Head in Metre	7.2	6.3	5.3	4.4						39	16
SL-2V-05CT	0.55	0.75	40		7.2	6.3	5.3	4.4						39	16
SL-2V-07CS-A	0.75	1	40		12.1	9.9	8.4	7.3						39	16
SL-2V-07CT	0.75	1	40		12.1	9.9	8.4	7.3						39	16
SL-2V-07DS-R	0.75	1	50		12.1	9.9	8.4	7.3						39	16.5
SL-2V-07DS-AR	0.75	1	50		12.1	9.9	8.4	7.3						39	17
SL-2V-07DS-A	0.75	1	50		13.3	12.2	10.8	9.3	7.9	6.2				44	21.5
SL-2V-07DT	0.75	1	50		13.3	12.2	10.8	9.3	7.9	6.2				44	21.5
SL-2V-07DT-R	0.75	1	50		12.1	9.9	8.4	7.3						39	16
SL-2V-15DS-A	1.5	2	50		15.1	13.6	12.1	10.5	9	7.4	6			44	23.5
SL-2V-15DT	1.5	2	50		18.1	17	15.6	14	12.2	10.2	8.2	6.3	4.5	44	23.5

Model	kW	HP	Outlet size (mm)	m³/hr	0	7.2	14.4	21.6	28.8	36	43.2	Solid Handling Capacity in mm	Weight in kg	
SL-2V-11DS-A	1.1	1.5	50	Head in Metre	14.2	13.4	10.2	7.6				44	25	
SL-2V-11DT	1.1	1.5	50		14.5	13	10.6	8.1	5.5	3			44	24
SL-2V-22DT	2.2	3	50		18	16	13.8	11.5	9	6.5	3.5		44	26
SL-2V-11ES-A	1.1	1.5	65		10.2	9.5	8.6	7.3	5.6				55	26.5
SL-2V-11ET	1.1	1.5	65		10.2	9.5	8.6	7.3	5.6				55	24.5
SL-2V-22ET	2.2	3	65		17	15.4	13.6	11.8	9.4	6.9	4.6		55	27.5

Model	kW	HP	Outlet size (mm)	m³/hr	0	4	8	12	13	16	20	Solid Handling Capacity in mm	Weight in kg
SLC-2V-11DS/DT	1.1	1.5	50	Head in Metre	8	7	6.5	5.5	4.8	3.5		-	22.5
SLC-2D-18FS/FT	1.8	2.4	80		12	9.5	8.5	7.5	7	6.5	5		-

"A" - are available with Float Switch.

Selfpriming Non-Clog Monoblock Pumps - SMB

C.R.I. "SMB Series" Self-priming non-Clog Monoblock Pump's are especially designed to dewater the sewage and sludges from trenches and pits. It is designed with non-clogging semi open type impellers which is supports for handling suspended solids. These pumps are powered by a totally enclosed fan cooled A.C. induction motor. Motor stator is made of low watt loss silicon steel laminations assembled under pressure and rigidly locked in the frame. Construction of motor frames and usage of quality materials result in high performance and low temperature rise thereby increasing the life cycle of the motor.



Applications :

- Pumping from Septic tanks in all types of Industries.
- Draining sewage / Rain water from hotels, malls & commercial buildings.
- Water recycling plants.
- Pumping waste water in Tunnels & Mines.

Salient Features :

- Non clogging impellers ensures free flow of solids.
- Solid Handling capacity upto 15.5mm.
- Quick automatic Self-priming function-no need for footvalve.
- Back-pull out type for easy maintenance.
- Efficient pumps with more energy savings.

Specifications :

Power range	0.75kW - 3.7kW (1HP - 5HP)
Maximum head	24 meter
Maximum flow rate	1050 lpm
Type of Duty	S1 (Continuous)
Versions	1Ph 200-240V / 3Ph 380-415V, 50Hz, A.C. Supply
Sealing	SMB 140 Mechanical seal arrangement, SMB 240,350 & 580 Stuffing box arrangement

Performance Data

SMB SERIES - 2800 RPM, Single Phase - 200-240 Volts, Three Phase - 380-415 Volts 50 Hz, A.C. Supply

PUMP MODEL	MOTOR POWER			NOMINAL PUMP SIZE IN MM (Suction x Delivery)	DISCHARGE IN lps / m ³ /h										
	kW	HP	RPM		6	8	10	12	14	16	18	20	22	24	SOLID HANDLING SIZE IN mm
					19.5	26	33	39	46	52.5	59	65.5	72	78	
					TOTAL HEAD IN METRES										
SMB-140 / T/SMB-140	0.75	1.0	2880	40 x 40	270	240	198	144	96	-	-	-	-	-	7.0
SMB-240 / T/SMB-240	1.5	2.0	2880	40 x 40	-	-	336	300	246	180	84	-	-	-	8.5
T/SMB-350	2.2	3.0	2880	50 x 50	-	-	510	480	444	390	324	252	168	60	10.5
T/SMB-580	3.7	5.0	1440	80 x 80	-	-	1050	930	750	480	204	-	-	-	15.5

NOTE : Performance applicable to liquid of specific gravity 1.02 and viscosity as of water.

Circulatory Pumps

C.R.I. Circulatory pumps are used to circulate Hot/cold water with adequate pressure in the pipe line. It is featured with Auto and Manual functions. In Auto Mode, pump will be operated based on water consumption. Whenever the taps are opened, pump will START and delivers the high-pressure water. when Taps are closed, pump will STOP automatically. In Manual mode, pump need to be operated manually.

Circulatory pumps are provided with 1.5 Metre lead out cable with plug. So it would be easy for installation



Salient Features

- Designed with Auto and Manual function.
- Silent operation.
- Corrosion free parts for hygiene.
- Easy for installation & service.

Specifications

Liquid temp. range	-5°C to +110°C
Max. Operating Pressure	10bar
Voltage	Single phase 230V
Frequency	50 Hz
Degree of protection	IP 44
Insulation Class	F
Mounting position	Horizontal
Connection type	Screw
Max. Head	12 mtrs
Max. Discharge	1.8 m ³ /hr

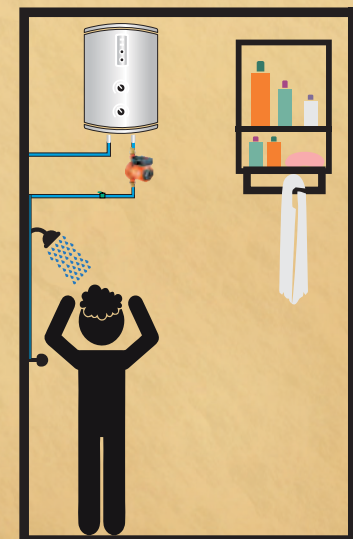
Applications

- Washing Machines, Heater & Shower.
- Boostup house watering system.
- Domestic heating systems.
- Air conditioning.
- Cooling system.

Performance Data

2800 RPM, Single Phase - 230 Volts, 50 Hz, A.C. Supply

Pump Model	Power (W)	Max. Head (Mtr)	Max. Flow (m ³ /hr)	Inlet and Outlet in MM	Weight (kg)
RS12/10G	150 W	10	1.8	15	2.8
RS20/12Z	275 W	12	3.1	25	4.5



Swimming Pool Pumps

VISTA & NOVA

C.R.I. Swimming Pool pumps are designed with inbuilt pre filter basket for cleaning the pool water. The mechanical seals are made of graphite and alumina with close tolerance for perfect sealing systems and the dynamically balanced rotary parts ensure vibration and noise free operation. All the parts of both pumps and motors are made of high quality materials to enhance the life span and efficiency. All single phase pumps are equipped with thermal overload protector to protect the motor from adverse operating conditions.

Applications

- Used for swimming pool water filtration and recycling

Specifications

Type	Asynchronous
Degree of protection	IP55
Pole	2 pole
Insulation Class	Class F
Duty	S1
Max. Head range	21 mtr
Max. Flow range	36 m ³ /h



VISTA



NOVA

Performance Data

VISTA & NOVA SERIES

2900 RPM, Single Phase - 220 Volts, Three Phase - 380-415 Volts 50 Hz, A.C. Supply


PUMP MODEL		MOTOR POWER		DISCHARGE IN lps / m ³ /h									
				0	0.83	1.67	2.5	3.33	4.17	5	6.67	8.33	10
1Ø	3Ø	kW	HP	0	3	6	9	12	15	18	24	30	36
				TOTAL HEAD IN METRES									
VISTA-9/03M	VISTA-9/03T	0.37	0.5	12.5	12.4	12.1	11.1	8.4	7.5	-	-	-	-
VISTA-10/05M	VISTA-10/05T	0.5	0.75	15.2	15.1	15.0	14.0	11.8	8.8	7.8	-	-	-
VISTA-11/07M	VISTA-11/07T	0.75	1.0	17.0	16.8	16.4	15.6	13.7	10.5	7.5	-	-	-
VISTA-18/11M	VISTA-18/11T	1.1	1.5	17.0	16.8	16.5	15.5	14.2	13.0	10.0	9.0	-	-
NOVA-18/11M	NOVA-18/11T	1.1	1.5	17.0	-	16.9	-	16.1	-	14.6	11.4	8.8	-
NOVA-18/15M	NOVA-18/15T	1.5	2.0	18.7	-	18.2	-	17.9	-	16.0	13.0	9.0	6.9
NOVA-22/22M	NOVA-22/22T	2.2	3.0	21.0	-	20.9	-	20.5	-	19.1	17.0	13.7	7.7





C.R.I. PUMPS

Pumping trust. Worldwide.

-
- 5 decades of engineering excellence • Sold in more than 120 countries
 - More than 9000+ models of pumps and motors • Over 1000 service centres across India
 - Fully equipped R&D wing recognized by Ministry of Science and Technology
 - ISO 9001 & 14001 accreditations
-

 **TOLL FREE 1800 121 1243**  www.crigroups.com

 www.facebook.com/cripumps  chatbot : **+91 9500401115**



*As the design and manufacture of pumps are subject to constant improvement, the product supplied may differ in some details from the information, descriptions, specifications and illustrations given.