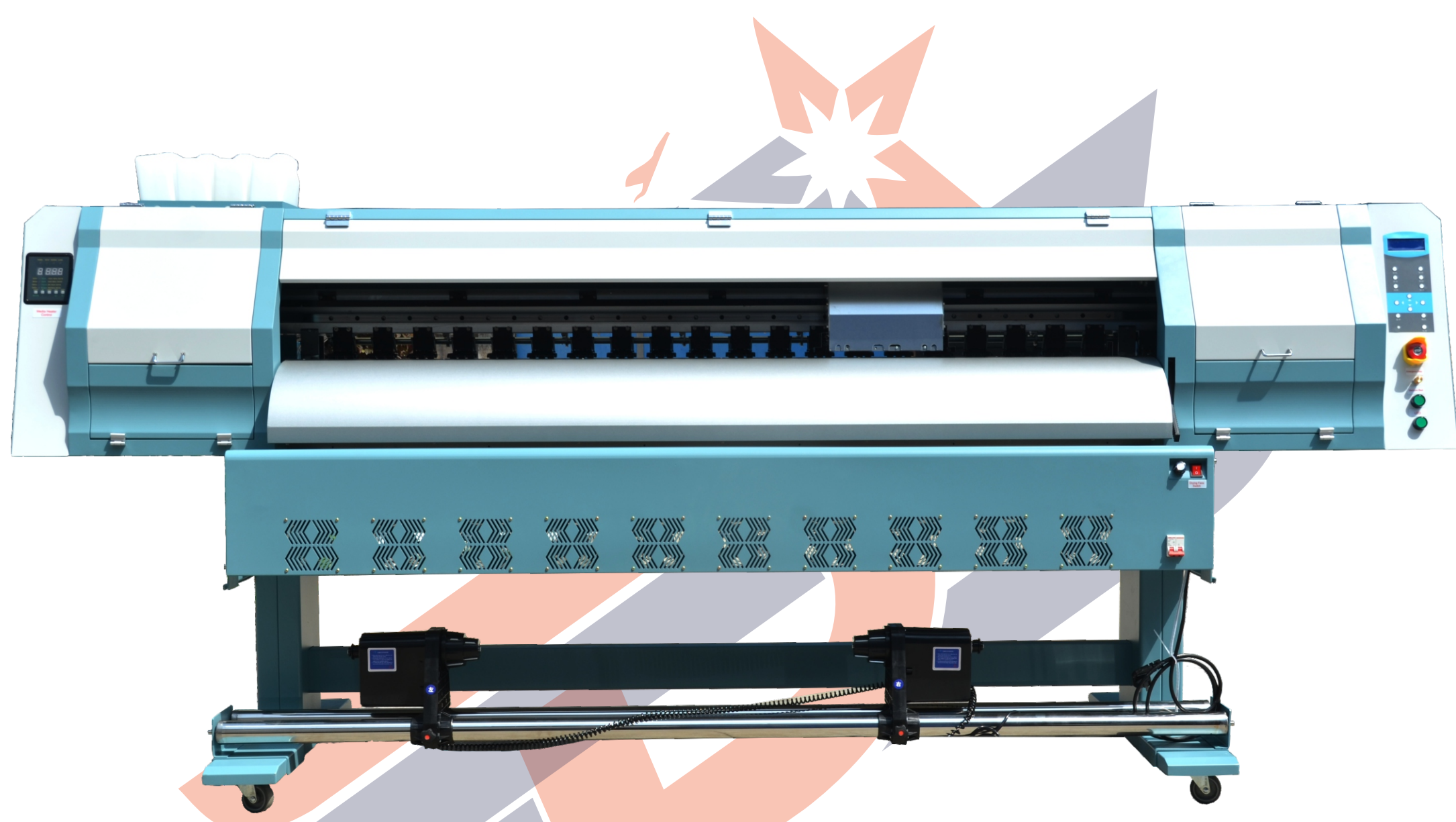




**Dhruv Signage**

# i3200 ECO SOLVENT HEAVY MODEL

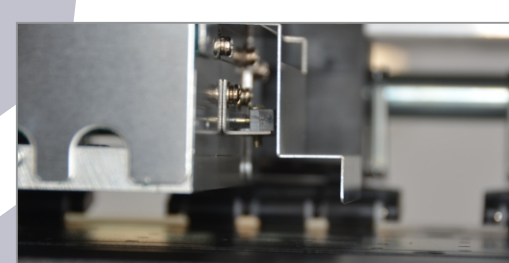


# i3200 ECO SOLVENT HEAVY MODEL

## Specification

Printhead	i3200	
Number of printhead	2	
Max. printing width	1800mm	
Max. media width	1850mm	
Production Capacity	Printing Mode	Printing Production(m <sup>2</sup> /h)
	720x720dpi 4Pass	35
	720x1440dpi 6Pass	26
	720x2880dpi 8Pass	20
	Type	ECO ink / Waterbase ink / Sublimation ink

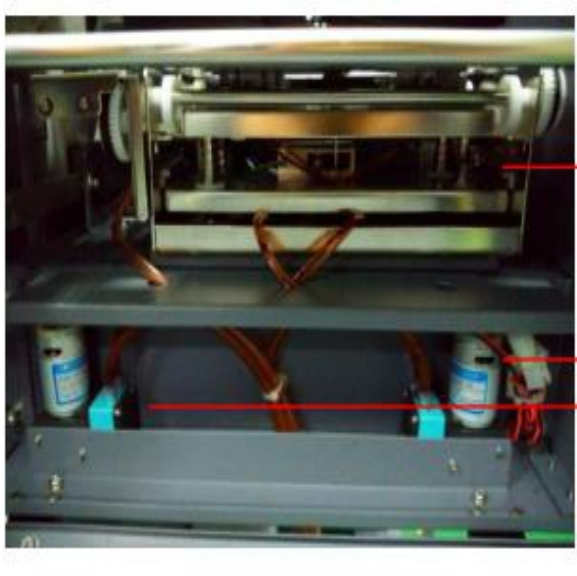
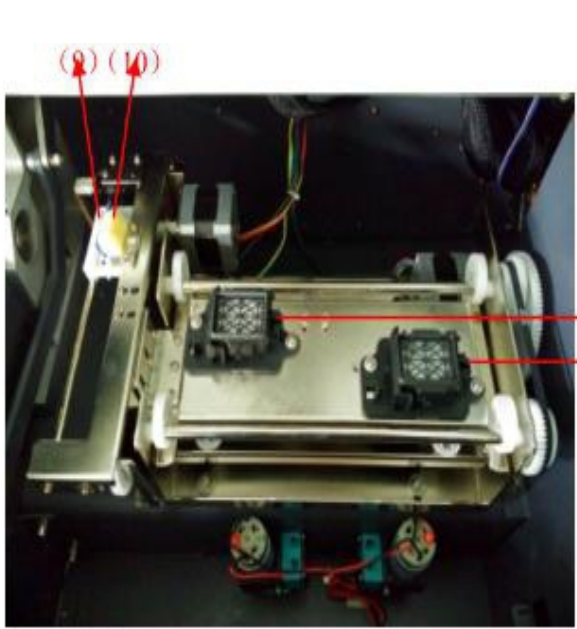
<b>Ink</b>	Color	4 colors (C, M, Y, K)
	Volume	1 Liter for each cartridge
<b>Media</b>	Ink supply system	Cartridge
	Width	1850mm
	Type	Transfer paper, sticker, PVC banner, film, glossy paper etc
<b>Feeding &amp; Take-up System</b>	Auto. damping control	
<b>PH Cleaning System</b>	Auto cleaning by ink suction	
<b>Main board</b>	Hoson	
<b>Heating System</b>	Equipped	
<b>Clamp</b>	Equipped	
<b>Data Transfer</b>	USB2.0	
<b>Printhead height</b>	Adjustable distance of 2mm~5mm from printhead nozzles surface to printing platform	
<b>RIP</b>	Ultraprint	
<b>Input Voltage</b>	AC 220V/230V , 50Hz/60Hz	
<b>Printer Dimension/Weight</b>	L2960xW950xH1500mm / 270Kg	
<b>Package Dimension/Weight</b>	L3160xW850xH930mm /350Kg	



1. Japan Thk Linear Guide
2. The Ink Box Bracket
3. The Strengthen Sheet Metal
4. Safe Anti- Collision
5. Automatic Feed / Collect System



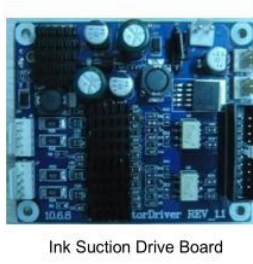
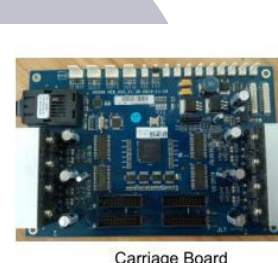
## Ink Supply System:



- (1) K Main tank
- (2) C Main tank
- (3) M Main tank
- (4) Y Main tank
- (5) K Cartridge
- (6) C Cartridge
- (7) M Cartridge
- (8) Y Cartridge

- (9) Wiper
- (10) Sponge
- (11) Capping pad 1
- (12) Capping pad 2
- (13) Capping system
- (14) Ink suction pump 1
- (15) Ink suction pump 2

## Boards:



**Dhruv Signage**

# Dhruv Signage

14-A, GROUND FLOOR, KH NO. 72/23, SWARN PARK MUNDKA, NEW DELHI-110041

M. : +91 - 9812036999, 9711889573

E- dhruvsignage@gmail.com

www. dhruvsign.com

Head Office : New Delhi

Abroad Branch : Kathmandu, Colombo, Dhaka