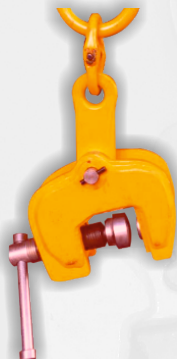


Productivity with Safety



 **CAMLIFT**[®]
Grip & Lift



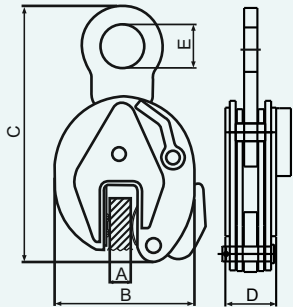


APPLICATION

- Lifting ■ Transportation ■ Turning over
- Rotation ■ Assembly ■ Erection,
Press working and Bending

FEATURES

- Designed for vertical plate lifting
- Spring type locking mechanism for additional safety
- Self gripping mechanism
- Easy to replace working parts, minimum maintenance
- Compact shape and relative lower self weight with a high lifting capacity



Model	SWL/Clamp Tons	Jaw Opening A	Dimensions				Weight Kg.
			B	C	D	E	
VPC 1T	1.0	0-20	140	280	53	50	4.5
VPC 1T-B	1.0	20-36	160	280	53	50	5
VPC 2T	2.0	0-25	180	335	54	55	7
VPC 2T-B	2.0	25-45	200	335	54	55	7.5
VPC 3T	3.0	0-32	220	430	68	65	13
VPC 3T-B	3.0	32-60	240	430	68	65	14
VPC 5T	5.0	5-40	250	510	80	70	21
VPC 5T-B	5.0	40-80	300	510	80	70	22
VPC 10	10.0	10-50	320	650	98	90	42
VPC 10-B	10.0	50-95	364	650	98	90	45
VPC 15	15.0	10-65	410	800	125	110	75
VPC 15-A	15.0	65-125	447	800	125	110	85
VPC 15-C	15.0	105-165	487	800	125	110	93

Note : Specification are subject to change without prior information

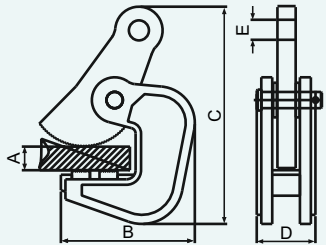


APPLICATION

- Lifting ■ Transportation ■ Press working

FEATURES

- Designed for horizontal plate lifting
- Simple cam mechanism
- Self gripping mechanism
- Easy to replace working parts, minimum maintenance.
- Compact shape and relative lower self weight with a high lifting capacity



Model	SWL/Pair Tons	Jaw Opening A	B	Dimensions		E	Weight Kg.
HPC-H1	3.0	0-32	117	190	56	18	6
HPC-H2	5.0	0-40	147	238	65	22	12
HPC-H4	7.0	0-50	163	286	75	24	19
HPC-H6	8.0	40-80	198	340	80	26	27

Note : Specification are subject to change without prior information



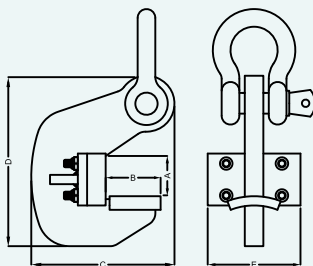


APPLICATION

- Lifting ■ Transportation ■

FEATURES

- Designed to lift short as well as long pipes
- Special pads are used to avoid any damage to wall face of pipe
- Pads can be replaced easily
- Supplied with bow shackles for easy excess for slings and belts
- Should be used in pairs



Model	SWL/Pair Tons	Jaw Opening A	B	Dimensions		E	Weight Kg.
PLC-P1	3.0	0-30	60	154	184	100	4.0
PLC-P2	6.0	0-40	85	204	243	135	9.0
PLC-P3	10.0	0-50	89	225	268	140	12.0

Note : Specification are subject to change without prior information



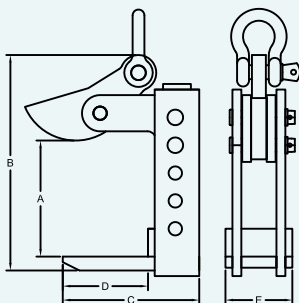


APPLICATION

- Lifting ■ Transportation ■

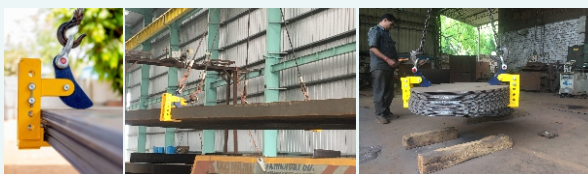
FEATURES

- Designed for horizontal plate lifting in multi/stacklifting or high thickness.
- Adjustable range in very simple mechanism
- Self gripping mechanism
- Easy to replace working parts, minimum maintenance.
- Compact shape and relative lower self weight with a high lifting capacity



Model	SWL/Pair Tons	Jaw Opening A	B	Dimensions			Weight Kg.
				C	D	E	
HMPC-H2	10.0	0-200	153	379	245	120	21.6

Note : Specification are subject to change without prior information



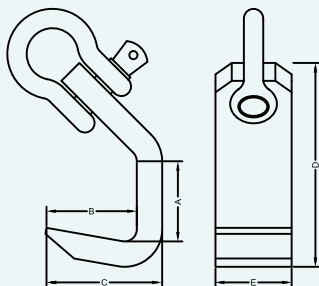


APPLICATION

- Lifting ■ Transportation ■

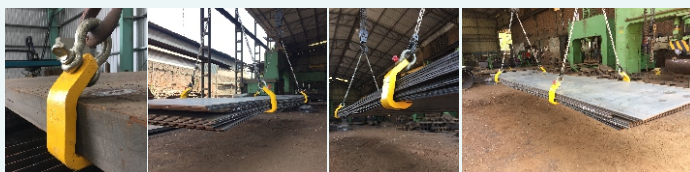
FEATURES

- Designed for horizontal plate lifting of plate
- Very simple and robust construction
- Provided with bow shackle for an easy excess of lifting belts and slings
- Nil maintenance .
- Hot formed



Model	SWL/Pair Tons	Jaw Opening A	B	Dimensions			Weight Kg.
				C	D	E	
HSPC-H2	6.0	0-100	90	116	224	75	6.4
HSPC-H4	10.0	0-125	112	145	278	97	11.5
HSPC-H6	18.0	0-200	178	222	432	120	29.0

Note : Specification are subject to change without prior information



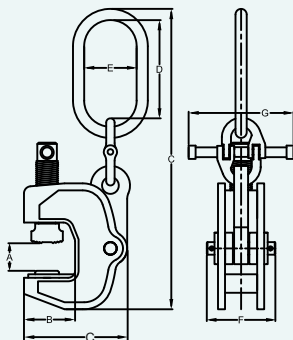


APPLICATION

- Lifting
- Transportation
- Press working

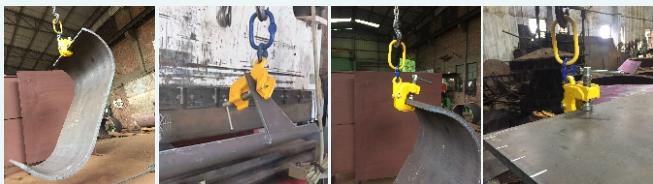
FEATURES

- Very rigid construction
- Provided with moving cam and threaded spindle for powerful clamping force
- Can be used in single and pair i.e as per the application
- Easy to replace working parts, minimum maintenance.
- Compact shape and relative lower self weight with a high lifting capacity



Model	SWL Tons	Jaw Opening A	B	C	Dimensions				Weight Kg.
MPC-M1	1.0	0-20	50	94	325	61	63	109	3
MPC-M2	3.0	0-40	73	148	430	141	52	141	6
MPC-M3	5.0	0-60	96	193	520	85	165	218	19

Note : Specification are subject to change without prior information



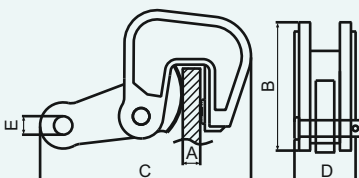


APPLICATION

- Lateral Lifting ■ Shaped steel lifting
- Transportation ■ Steel Structures

FEATURES

- Designed for lateral lifting
- Simple cam mechanism
- Self gripping mechanism
- Easy to replace working parts, minimum maintenance
- Compact shape and relative lower self weight with a high lifting capacity



Model	SWL/Pair Tons	Jaw Opening A	B	Dimensions			Weight Pair
				C	D	E	
DLC-D1	3.0	0-25	130	228	56	20	9
DLC-D2	4.0	0-40	162	265	72	22	15

Note : Specification are subject to change without prior information



C. J. ENGINEERING WORKS

285, G.I.D.C., Makarpura Road, | Phone : +91-265-2634182,
Vadodara-390 010. (Guj.) INDIA. | E-mail : mail@cjengineeringworks.com
www.cjengineeringworks.com

