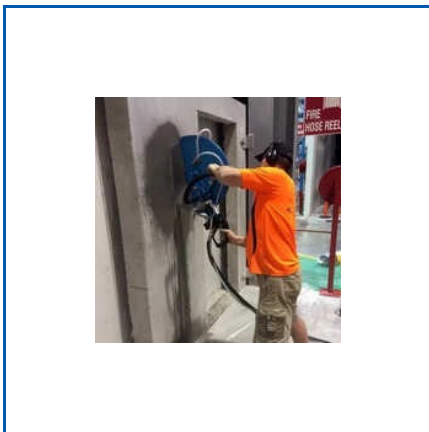


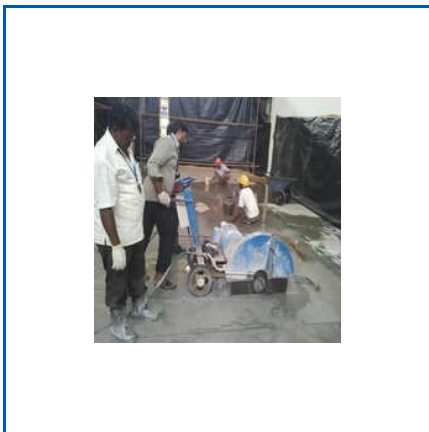
Concrete Wall Cutting Service

Service Provider, Trader and Supplier

107 A260 Sika Top Seal, 20 kg Fosroc Brushbond Roofguard Waterproofing Chemical, 20L Fosroc Nitobond SBR Waterproofing Chemical, Anchor Fixing Services, Chemical Rebaring Service, Chemical Waterproofing Service, Concrete Cutting Services, Concrete Demolition Work Services, Concrete Floor Sawing Service, Concrete Hydraulic Splitting Service, Concrete Slab Cutting Service, Concrete Slab Cutting Work, Concrete Wall Cutting Service, Diamond Drilling Core Cutting Service, Diamond Floor Sawing Services, etc.



CONCRETE WALL CUTTING SERVICE



SLAB CUTTING SERVICE



CONCRETE SLAB CUTTING SERVICE

About Us

Global Construction Services is a trusted service provider, trader, and supplier offering dependable solutions for modern construction requirements. Established in 2018 and based in Pune, Maharashtra, we support infrastructure, commercial, and industrial projects with technically sound services and materials. Our focus is on delivering reliable execution that aligns with safety standards, structural integrity, and long-term performance expectations.

Our range of products and services includes Inclined Rock Anchoring Services, Flooring Work Service, Nylon Anchor, Rebar Grouting Services and Chemical Waterproofing Service. Each service is designed to address specific construction challenges while ensuring durability and functional efficiency. We cater to projects that demand precision, stability, and engineered solutions across varying site conditions.

Key Facts

No of Staff	248
Year of Establishment	2018
OEM Service Provided	No

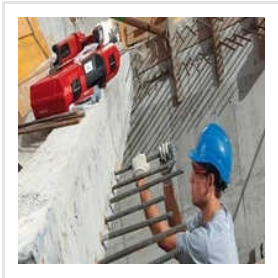
Our Products



Floor Sawing Services



Diamond Wire Sawing Services



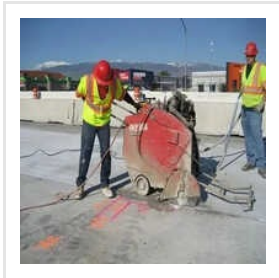
Hilti Rebar Fixing Services



Rebar Grouting Services



RCC Floor Cutting Services



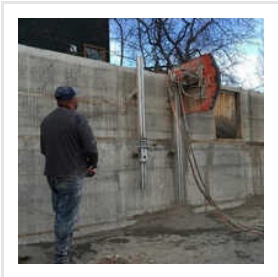
Floor Concrete Cutting Service



Chemical Rebaring Service



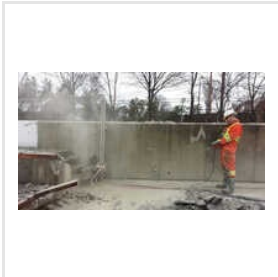
Concrete Hydraulic Splitting Service



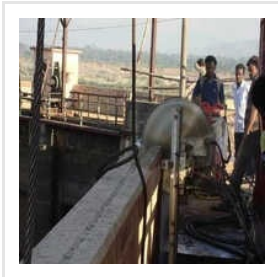
RCC Wall Cutting Service



Rcc Core Cutting Services



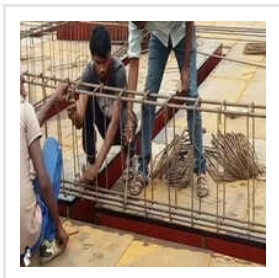
Wall Cutting Services



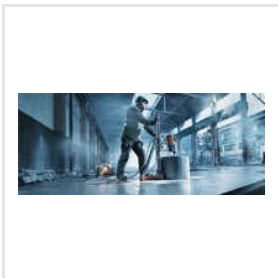
Wall Saw Cutting Services



RCC Cutting Service



Rcc Rebaring Service



Diamond Drilling Core Cutting Service



Wall Sawing Services

ADDRESS



Shop No.10 10, Ground Floor,
Krishna Tower, Bhumkar Bridge
Chowk, Narhe, Pune,
Maharashtra, India (411046).



EMAIL

shiv@globfix.com



MOBILE

+919923315757



WEBSITE

www.globalconstructionn

KEY PERSONNEL
Shiv Nalgire
(PROPRIETOR)