



HYDRAULIC MOBILE CRANE

SCE-14T 36/45/53/57 FEET

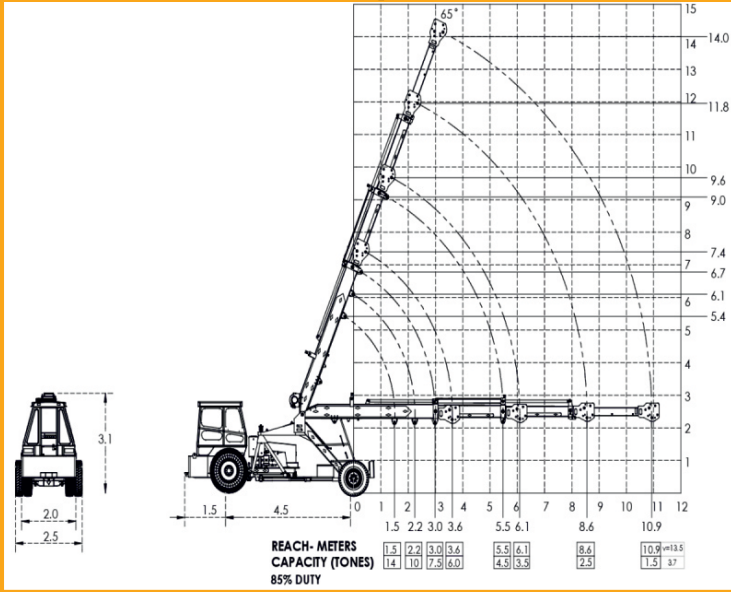
SPECIFICATIONS

RATED CAPACITY (Free on Wheel)	14 Tons 36/45/53/57 FEET	BOOM	
ENGINE	Simpson, Four Cylinder, Water Cooler Diesel Engine Rated power for crane 49 BHP @ 2200 RPM (max continuous engine rating 58.3 @ 2300 RPM) / Sonalika : 60HP Four Cylinder, Water Cooler Diesel Engine Rated power for crane 49 BHP @ 2200 RPM.	Telescoping	36/45ft (11.02 mtr.) 53ft (12.09 mtr.) 57ft (16.02 mtr.) 3 Part, 1st & 2nd parts are actuated by hydraulic cylinders.
TRANSMISSION	Heavy duty, sliding Mesh developed specially for crane application 4 forward and 2 reverse speeds with high & low selector lever.	Derricking	Open double acting hydraulic cylinders.
CLUTCH	Heavy duty, single, dry friction, wire woven clutch plate especially designed for crane application.	HOIST MECHANISM	4 Falls wire rope with big drum double bearing SAI winch/Dinamic winch
TOP SPEED	26 KMPH without load.	HOIST	Rope dia 13mm Steel Core.
HYDRAULIC SYSTEM		CAPACITIES	
PUMP	Vane hydraulic pump. (Velgon)	Air Cleaner	1.00 Ltr.
CONTROL VALVE	Precision Control & 4 Spool Valve with pressure relief value.	Engine	10.00 Ltrs.
HYDRAULIC FILTER	Suction line has a 100 mesh inline strainer while line has 25 micron full flow filter.	Fuel Tank	60.00 Ltrs.
STEERING		Hydraulic Tank	140.00 Ltrs.
TYPE	2 double acting steering with articulated hydraulically Rams	Transmission	48.00 Ltrs.
ARTICULATION	58° articulation through 2 hydraulic cylinders on either side and turning radius of 13Mtrs. (approx) on outer edge of rear wheels.	ELECTRICAL SYSTEM	12V (100 AH) Single Battery Negative Earth.
TURNING RADIUS	Minimum 13mtrs (approx) on outer edge to rear wheels	TYRES	
BRAKES		Front	11.00x20 - 16PR (4 Nos.)
FRONT WHEEL	Pneumatically operated dual circuit Airbrakes.	Rear	14.00x25 - 20 PR (2 Nos.)
REAR WHEEL	Pneumatically operated at rear wheels.	SAFETY	Hose Failure protection. Safety brakes on hoist. O.C Valve in Lift Cylinder. Cylinder guards.
PARKING	Parking Break is pneumatically operated.	STANDARD EQUIPMENT	Rops Full enclosed with view cabin with rotomould canopy. Cabin Fan, FM Radio with speaker, Mobile Charger., Front and rear work lights, Reflectors & rear view mirror, Tool Box with Tool Kit, Gauges Cluster Meter:- A) Water temperature. B) Engine oil Pressure. C) Amp. Meter. D) RPM Meter cum hour Recorder E) Air Pressure.
		OPTIONAL EQUIPMENT	Audio Overload Indication. Audio over hoisting indication. Fly Jib (1.0 Tones Max. Capacity). Safe load indicator Helper Seat/Slinger Seat Front Out Riggers with hydraulic cylinder Slotted boom. (Fully hydraulic 10.90mtrs. Height) 4 part standard boom Over hoisting hydraulic cutoff Safe load indicator.
		GROSS WEIGHT	36/45 ft (11,000 Kg.), 53ft (11,300 Kg.), 57ft (11,500 kg.)

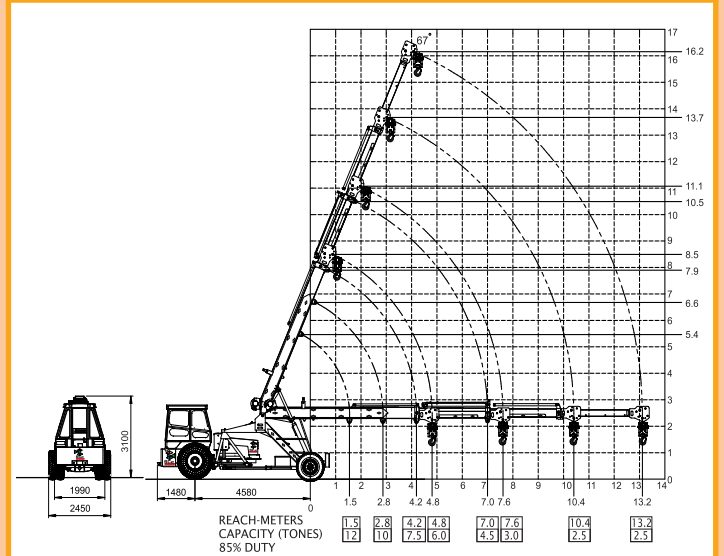
LAUNCHING SOON 360 MODEL

LOAD CHART SPECIFICATIONS

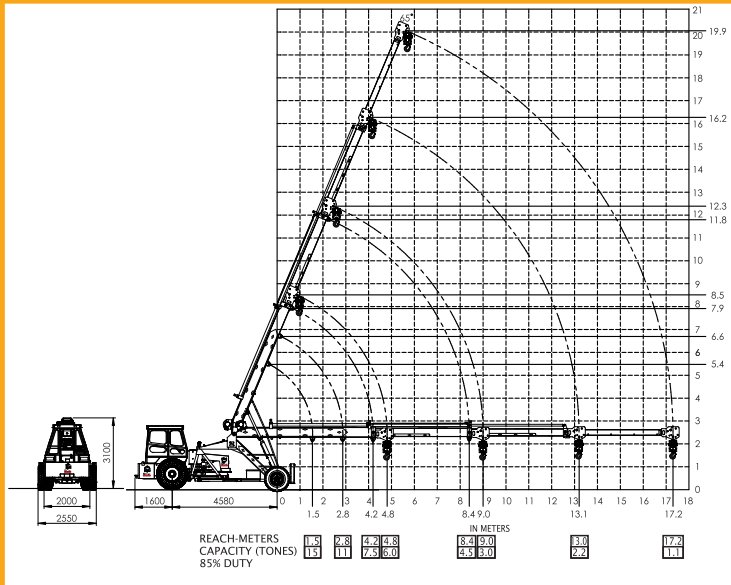
14TON 36/45 FEET



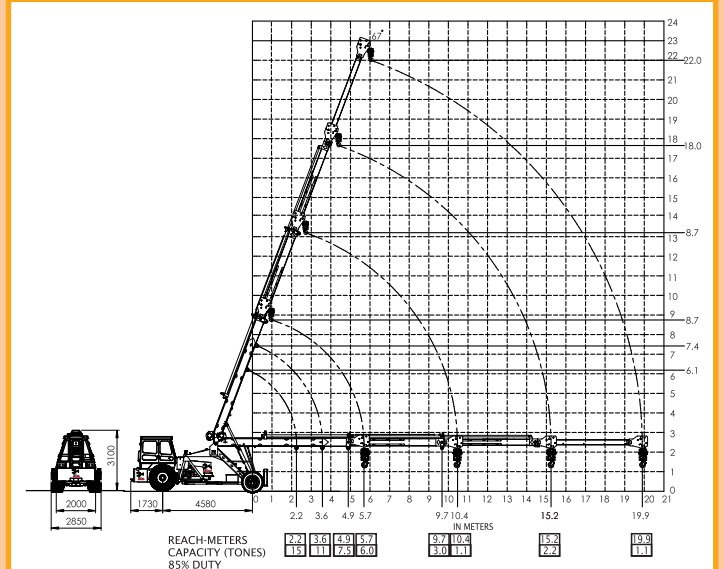
14TON 57 FEET



15TON 65 FEET



15TON 75 FEET



WE ALSO MANUFACTURE 12 TON 36 & 42 FEET

SCE-15T 65/75 FEET

SPECIFICATIONS

RATED CAPACITY (Free on Wheel)	15 Tons 65/75 FEET	BOOM Telescoping	65ft (19.06 mtr.) 72ft (22.00 mtr.) 4 Part, 1st & 2nd parts are actuated by hydraulic cylinders and part by hydraulic assisted by rope
ENGINE	Simpson, Four Cylinder, Water Cooler Diesel Engine Rated power for crane 49 BHP @ 2200 RPM (max continuous engine rating 58.3 @ 2300 RPM) / Sonalika : 60HP Four Cylinder, Water Cooler Diesel Engine Rated power for crane 49 BHP @ 2200 RPM.	Derricking	Open double acting hydraulic cylinders.
TRANSMISSION	Heavy duty, sliding Mesh developed specially for crane application 4 forward and 2 reverse speeds with high & low selector lever.	HOIST MECHANISM HOIST	6 Falls wire rope with big drum double bearing SAI winch/Dinamic winch Rope dia 13mm Steel Core.
CLUTCH	Heavy duty, single, dry friction, wire woven clutch plate especially designed for crane application.	CAPACITIES Air Cleaner Engine Fuel Tank Hydraulic Tank Transmission	1.00 Ltr. 10.00 Ltrs. 60.00 Ltrs. 190.00 Ltrs. 48.00 Ltrs.
TOP SPEED	26 KMPH without load.	ELECTRICAL SYSTEM	12V (100 AH) Single Battery Negative Earth.
HYDRAULIC SYSTEM PUMP	Vane hydraulic pump. (Velgon)	TYRES Front Rear SAFETY	11.00x20 - 16PR (4 Nos.) 14.00x25 - 20 PR (2 Nos.) Hose Failure protection. Safety brakes on hoist. O.C Valve in Lift Cylinder. Cylinder guards.
CONTROL VALVE	Precision Control & 4 Spool Valve with pressure relief value.	STANDARD EQUIPMENT	Rops Full enclosed with view cabin with rotomould canopy. Cabin Fan, FM Radio with speaker, Mobile Charger., Front and rear work lights, Reflectors & rear view mirror, Tool Box with Tool Kit, Gauges Cluster Meter:- A) Water temperature. B) Engine oil Pressure. C) Amp. Meter. D) RPM Meter cum hour Recorder E) Air Pressure.
HYDRAULIC FILTER	Suction line has a 100 mesh inline strainer while line has 25 micron full flow filter.	OPTIONAL EQUIPMENT	Audio Overload Indication. Audio over hoisting indication. Fly Jib (1.0 Tones Max. Capacity). Safe load indicator Helper Seat/Slinger Seat Front Out Riggers with hydraulic cylinder Slotted boom. (Fully hydraulic 10.90mtrs. Height) 4 part standard boom Over hoisting hydraulic cutoff Safe load indicator.
STEERING TYPE	2 double acting steering with articulated hydraulically Rams	GROSS WEIGHT	65 ft (13,300 Kg.), 72ft (13,800 Kg.)
ARTICULATION	58° articulation through 2 hydraulic cylinders on either side and turning radius of 13Mtrs. (approx) on outer edge of rear wheels.		
TURNING RADIUS	Minimum 13mtrs (approx) on outer edge to rear wheels		
BRAKES FRONT WHEEL	Pneumatically operated dual circuit Airbrakes.		
REAR WHEEL	Pneumatically operated at rear wheels.		
PARKING	Parking Break is pneumatically operated.		

LAUNCHING SOON 360 MODEL



WINCH: Heavy duty big drum double bearing SAI Winch/Dinamic Winch for precision handling with 6 fall hook block.

CABIN: Extra protection with heavy bar of cabin roof.



CABIN: Ergonomically designed spacious cabin for better front visibility.



HOOK BLOCK: Self Adjusting heavy duty hook block with bearing pulley.



ENGINE: Simpson Engine BS-III (CEV compliant) - high on power/torque & low on fuel consumption & maintenance



CYLINDER WITH O.C. VALVE: Lift cylinder with O.C. valve for protection of hydraulic handling of load.





Corporate Office :
E-1/78, DLF, Sector-11, Faridabad-121006



Manufacturing Unit :
Village Gadpuri Dundsa, Near Toll Booth Palwal
Haryana-121102

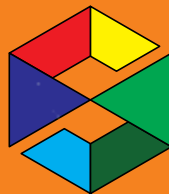


Dealer Network All over India



- ★ **PUNJAB**
Bernala
Derabassi
- ★ **UTTARAKAND**
Haridwar
- ★ **JHARKHAND**
Ranchi
- ★ **UTTAR PRADESH**
Lucknow
Mathura
Bareilly
- ★ **RAJASTHAN**
Jaipur
Jodhpur
Udaipur
Kota
- ★ **GUJRAT**
Ahemdabad
Mehsana

- ★ **KARNATAKA**
Bangalore
- ★ **ORRISA**
Cuttack
Rourkela
- ★ **BENGAL**
Durgapur
Kolkata
North Bengal
- ★ **TELENGANA**
Hyderabad
Karim Nagar
- ★ **TAMIL NADU**
Chennai
- ★ **MADHYA PRADESH**
GWALIOR
- ★ **MAHARASHTRA**
Pune
Nagpur



SCE
CRANE MANUFACTURER

SHAKTTI CONSTRUCTIONS EQUIPMENT PVT. LTD.

Khewat No. 25, Khewat No. 28, Killa No. 1, Village Gadpuri Dundsa,

Near Toll Booth Palwal, Haryana-121102

Contact : +91-8447966966, 9555444222

E-mail : marketing@scecrane.com sales@scecrane.com

Website : www.scecrane.com