

*Professional Printer Master*

*Since 2005's*



**UV2030 Large Format UV Flatbed Printer**

***WALLPANELS PRINTING MASTER***

## Specification

### Print Technology

Print Format	200 x 300 cm	
Print Height	10 cm / 4 in ( Max. 40 cm / 16 in )	
Color Set	CMYK+LM+LC+W+V; CMYK+W+V, CMYK+2W+2V; CMYK+W+CMYK	
Print Direction	Uni / Bi-directional , Front / Rear Alternative	
Head Model	Ricoh G5, Auto Heating, 2~8 ph	Toshiba CE4M,Auto heating,4-16pcs
RIP Software	PrintFactory, Developed by Holland Aurelon	
Resolution	4 PASS : 720 x 600 dpi 6 PASS : 720 x 900 dpi 8 PASS : 720 x 1200 dpi	4 PASS : 600 x 600 dpi 6 PASS : 600 x 900 dpi 8 PASS : 600 x 1200 dpi
Print Speed	Production mode: 15-18 sqm/h Quality mode: 12-15 sqm/h High resolution mode: 10-12 sqm/h	Production mode: 13-18 sqm/h Quality mode: 10-15 sqm/h High resolution mode: 8-12 sqm/h
Printhead price	1850\$/pcs	650\$/pcs

### Machine Highlight

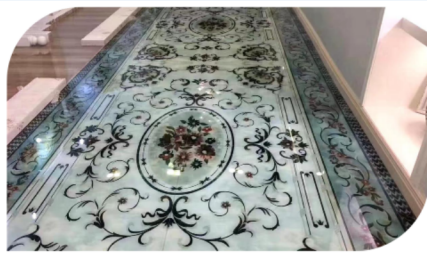
Heavy Duty Frame	Strengthened aluminum beam + Thicken steel base
Driving Mode	HIWIN linear rail + Servo motor + Lead screw + IGUS Drag chain
Protective Device	Anti-collision + Static eliminator
Work Table	Anodized aluminum table + Independent vacuum control
Ink System	Negative pressure Ink supply + White Ink stirring + Ink-lack Warning

Curing System	Imported LED lamp, 30000 Hours Lifespan + Water cooling Chiller
Height Detection	Automatic Sensor
<b>Others</b>	
Print Media	Glass, Ceramic, Acrylic, Metal, Leather, Plastic, Wood, PVC .. etc
PC configuration	Win7/ Win10, 64 bit, CPU≥ i5, RAM ≥8GB, Space for Disk C≥100G
Signal Transmission	Optical Fiber + USB 3.0
Color Control	Comply with ICC standards, With curve and density Ddjustment function
File Format	TIFF/ JPEG/ POSTSCRIPT3/ PDF
Power Supply	AC220V,50/60HZ
Working Power	3.5 KW
Noise	Standby < 32 dB ; Working < 65 dB
Machine Size	4.6 m x 2 m x 1.45 m
Net Weight	1600 KG
Machine Body Price	14500\$

*Printing Personal Customize Colorful Life*



**3D Wallpanel**



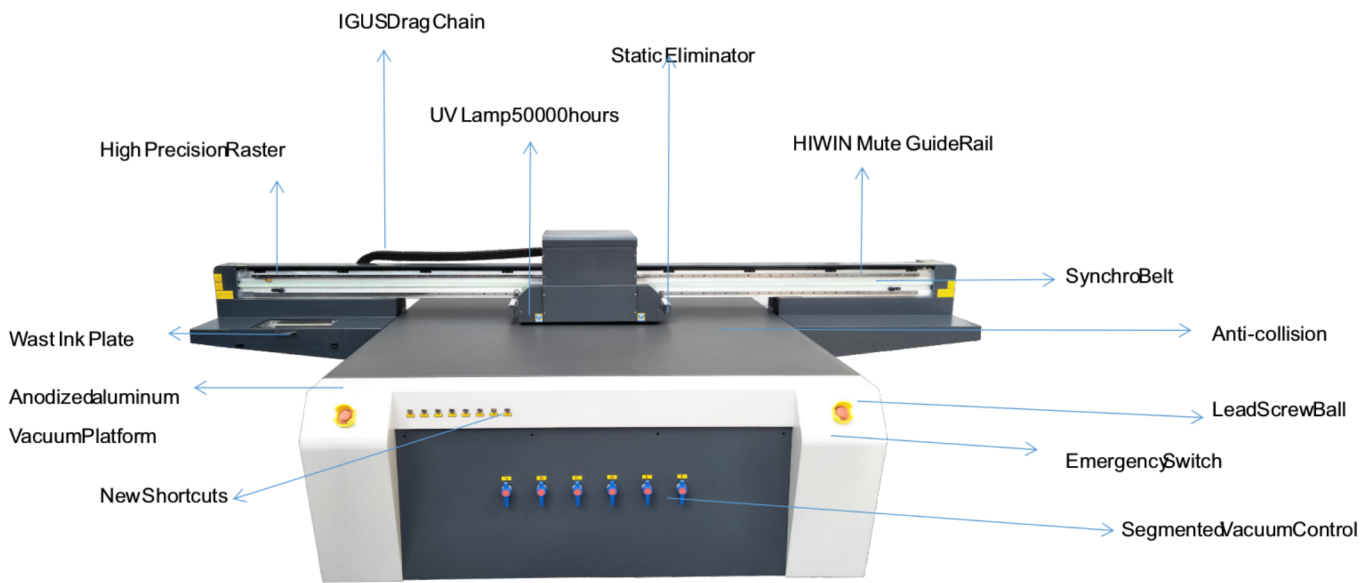
**Printed Marble**



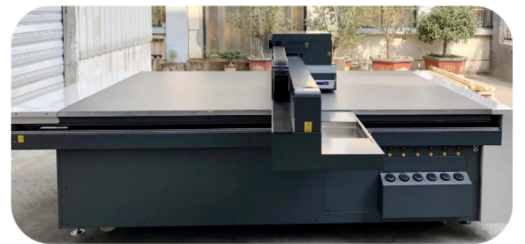
**Glass Door**



**Ceramic Tiles**



*2.0\*3.0m IndustriaGradeUV FlatbedPrinter*



## Main Parts

400w AC Servo Motor + Drive for X axi



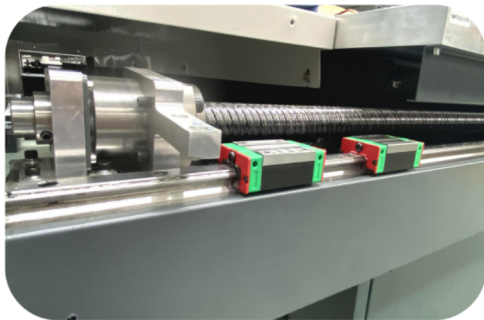
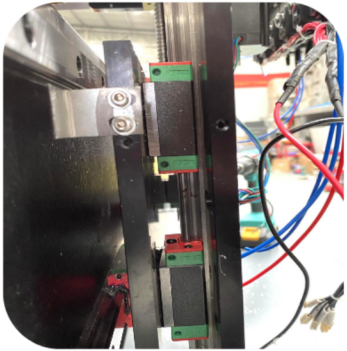
Leadshine Brand AC Servo Motor + Drive--Top Brand Motor In China

1. Printing precious good
2. Quality more durable+working more stable
3. Printing speed more faster

YDM UV PRINTER



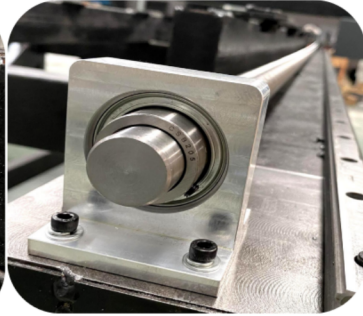
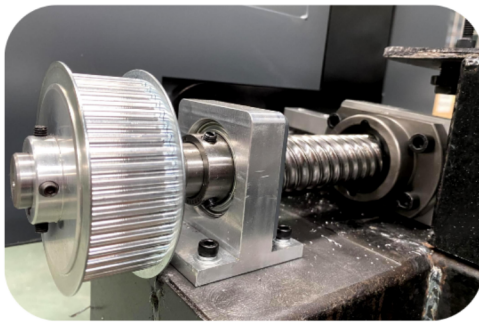
750w AC Servo Motor + Drive for Y axi



\* #QE20 High quality mute slider block HIWIN (Taiwan), with high rigidity able to reduce the working noise

\* #4040 Mute screw ball TBI(Taiwan), with high precision , high rigidity able to improve the production effectively

\* #EGR20 Linear guides mute Hiwin (Taiwan), with high rigidity,able to reduce weight of printer carriage effectively

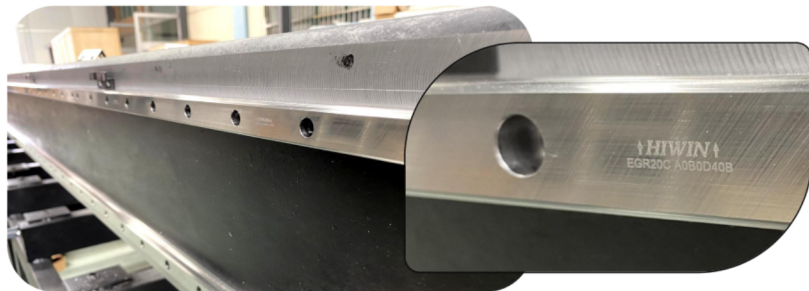


\* The maximum lifting height of the carriage is 10cm as general

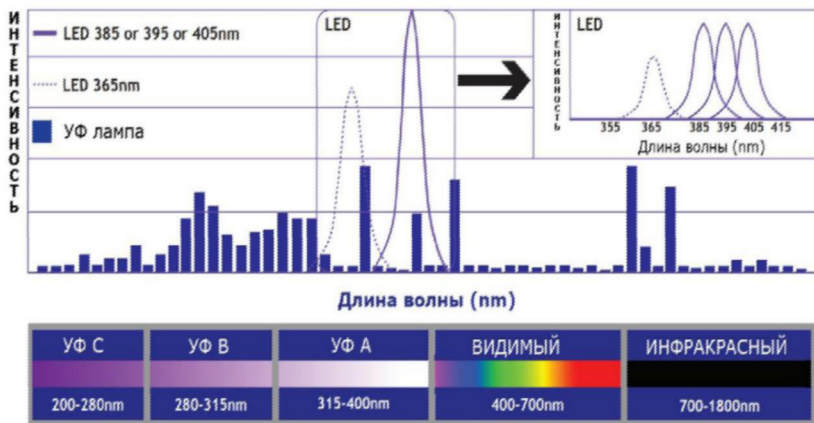
\* If need the customized printing height :

**20cm + 450 \$**

**40cm + 700 \$**



## UV LED & LAMP WAVELENGTH



## UV LED PRINTING TECHNOLOGY

The printer is equipped with high-power water-cooled UV LED emitters of 16 W / cm<sup>2</sup>.



Using UV LED Emitters

has a number of **advantages**:

- **Energy efficient.**

The power consumption of the UV LED system is 1500 W / h, which results in significant energy savings.

- **High performance.**

UV LED units can be turned on and off instantly without degrading the intensity. This means there is no waste of lamp warm-up time and no delay in shutter movements.

- **Fireproof.**

UV LED block is cool to the touch and has a wider range of applications. They allow printing on heat-sensitive materials such as thin glass, self-adhesive films or thin PVC materials. In addition, stable light and heat generation results in very stable bi-directional alignment of the printheads.

- **Environmentally friendly.**

Mercury free, no mercury disposal costs. There is no need to ventilate the room, UV Led blocks do not emit Ozone during operation.

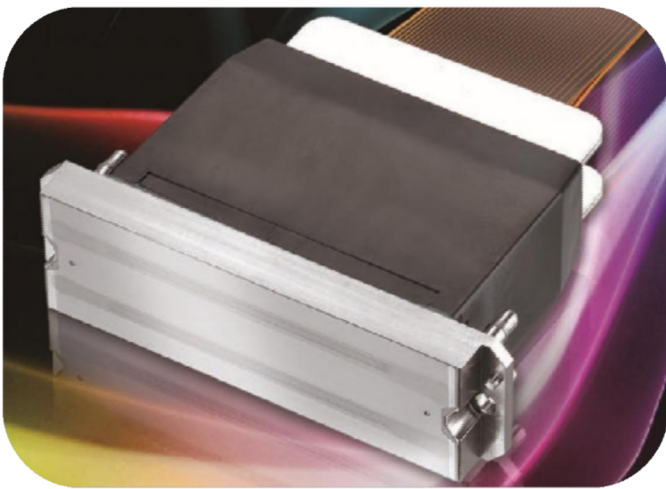


## Characteristics of UV LED system

<b>Model</b>	UVLED-5A20	<b>LED quantity (pcs)</b>	2
<b>Cooling System</b>	Water cooling	<b>Model Chiller</b>	1500
<b>Wavelength (nm)</b>	395	<b>Power supply</b>	AC220V, 50Hz
<b>Emitter size(mm)</b>	300x25	<b>UV LED power system (W)</b>	1500
<b>Radiation height(mm)</b>	2-5	<b>LED power block (W)</b>	650
<b>Intensity radiation (W / cm<sup>2</sup>)</b>	8-16, adjustable	<b>Adjustment</b>	3-24V
<b>Temperature premises(°C)</b>	0-50	<b>Lifetime(H)</b>	20000

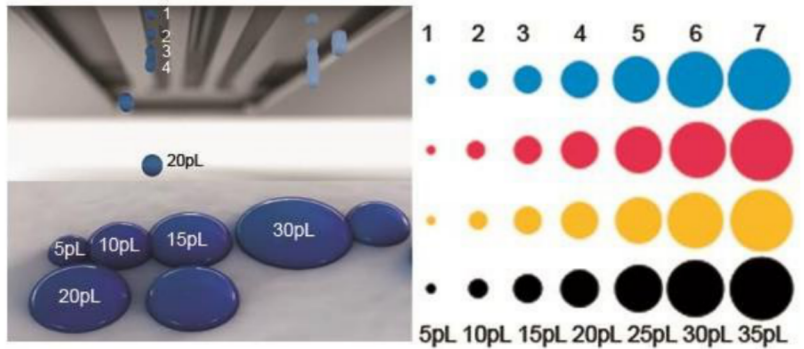


*HOW TO CHOOSE THE SUITABLE PRINTHEAD AND CONTROL SYSTEM FOR YOUR BUSINESS?*



## Ricoh Gen5 Printhead

- Heating and voltage regulation system, controlled by software, can use high-density UV ink, continuous printing for 10 hours non-stop.
- Variable droplet printing technology, eight levels of droplet formation, droplet size from 7 to 35pL. Bright and vibrant colors in both light and dense spot fills.
- 1280 nozzles, which are arranged in 4 rows of 320 nozzles. provide fast, high-resolution printing speed.
- Long service life 3-5 years.



## Ricoh Head Arrangements for different Color Set

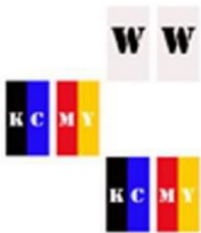
4 Print Heads



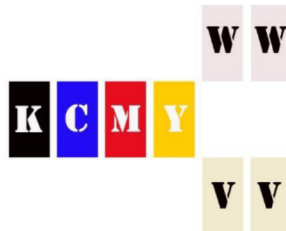
6 Print Heads



6 Print Heads



8 Print Heads



- Printing with V varnish with selective or full glossy coating

- Use white ink W for color media, create backlit images, use white for day / night display and opaque matte images.

- CMYK prints well on white substrates.

- CMYK + W Bright juicy colors thanks to the white layer. Used for printing on transparent and colored substrates. you can cover images from above with White color.

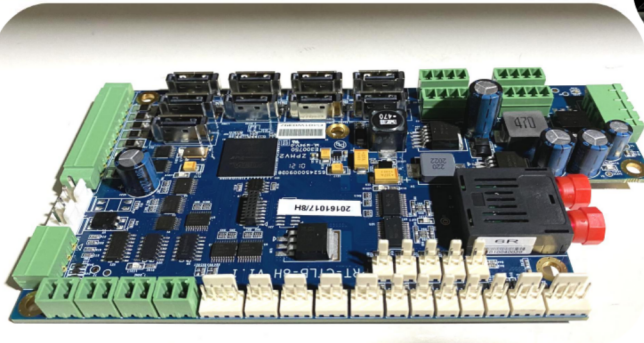
- CMYK + W + V Prints on color and transparencies with white and varnish. Varnish adds volume, glossy shade adds brightness, creates additional protection for the image.



### *UMC Board System for Ricoh G5 Heads*

- 1. Easier Operation,*
- 2. Durable Quality,*
- 3. Smarter Brain for Printer*

*Perfect  
choose*

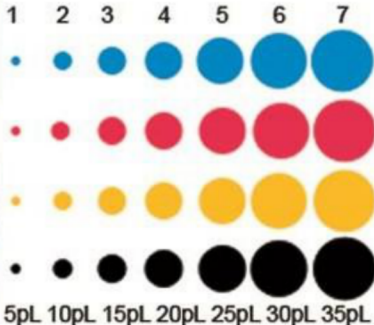
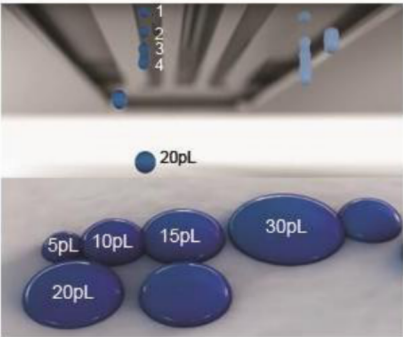


- 4. One Year Warranty*
- 5. Less Maintenance Cost*
- 6. Mature Technology*
- 7. Stable And Efficient*



## Toshiba Print Head

- Internal heating and voltage regulation system, controlled by software, can use high density UV ink, continuous printing for 10 hours without stopping.
- Variable droplet printing technology, eight levels of droplet formation, droplet size from 5 to 35pL. Bright and vibrant colors in both light and dense spot fills.
- 636 nozzles, which are located in 2 rows of 318 nozzles. provide fast, high-resolution printing speed.
- Long service life 3-5 years.



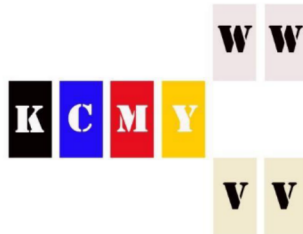
# TOSHIBA CE4M Printhead--New Trend

## Toshiba head Arrangement for Different Color Set

6 Print Head

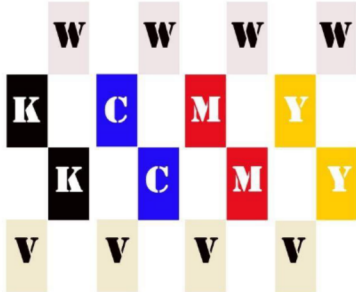


8 Print Head

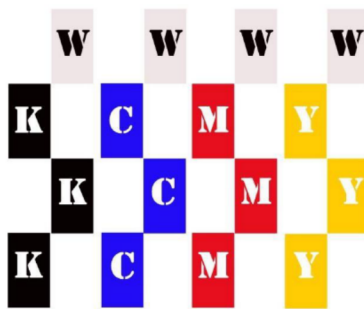


- Printing with V varnish with selective or full glossy coating
- Use white ink W for color media, create backlit images, use white for day / night display and opaque matte images.

16 Print Head

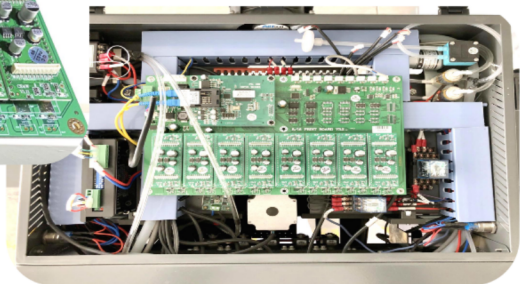
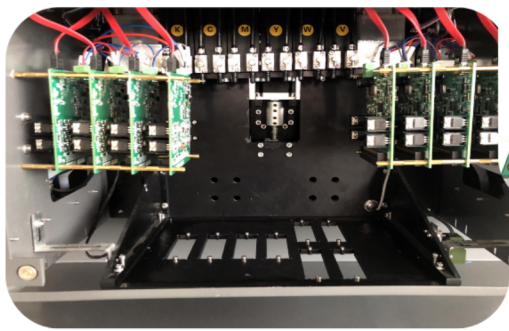


16 Print Head



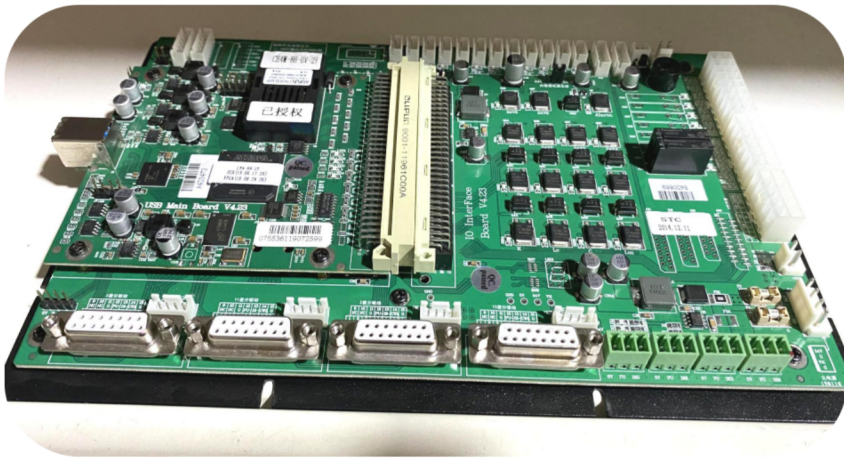
- CMYK prints well on white substrates.
- CMYK + W Bright juicy colors thanks to the white layer. Used for printing on transparent and colored substrates. White you can cover images from above with color.
- CMYK + W + V Prints on color and transparencies with white and varnish. Varnish adds volume, glossy shade adds brightness, creates additional protection for the image.

Toshiba Printhead CE4M works with KNFUN Smart Control System, fast colorful living lifestyle



**KNFUN**

*TOP Ranking Brand for Toshiba Printhead*

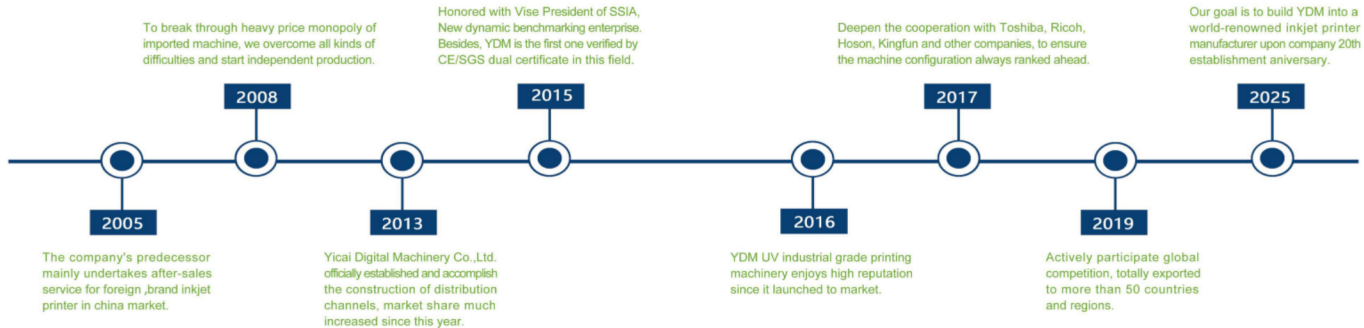


1. New Trend in Printing industry
2. Good price
3. Excellent colors printed
4. Head heating system
5. Good printing speed

**Advantages**

**YDM UV PRINTER**

# THE DEVELOPMENT



**CDI**  
COLOR DEVELOPERS INDIA

Factory - Plot No. D-11/15, Site 5, Kasna Industrial Area, Greater Noida, Pin -201310 (UP)  
Office Add.: Sec-C, 1097/4, Indira Nagar, Near - Shekhar Hospital, Lucknow - 226016 (UP)  
E mail : lucknow.cdi@gmail.com

+91-8960903000, +91-6393770931 ☎ 0522-3505983

**COLOR DEVELOPERS INDIA**

A-One-Stop-Shop for Affordable Printing Solutions