



RARA PHARMATECH & SURGICALS

We Have Different Types Of Product Categories

- ◆ Animal Houses Equipment
- ◆ Pharma Process Equipment
- ◆ Laboratory Furniture



RARA PHARMATECH & SURGICALS is proud to offer the most exceptional quality standards of Pharmaceuticals Companies, Pharma Research Companies, Hospital, Laboratory.



भारत

OUR CONTACT



98, Gajanan Industrial Estate, B/S Tata Motors Service Station, Near Hathijan Circle, S P Ring Road, Vatva, Ahmedabad



+91 9898094105
+91 7201894105



marketing@rarapharmatech.com
export@rarapharmatech.com



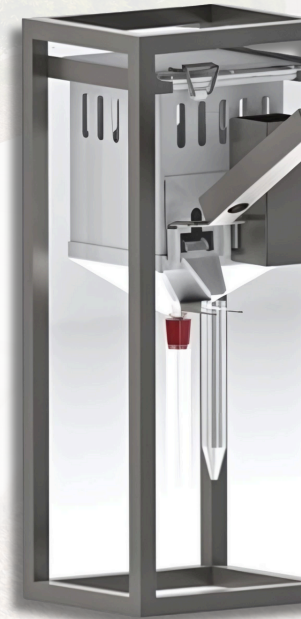
www.rarapharmatech.com



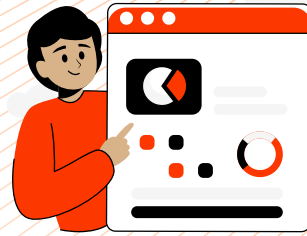
Scan This QR
&
Visit Our Website



RARA PHARMATECH & SURGICALS



COMPANY OVERVIEW



- ◆ **RARA PHARMATECH & SURGICALS** was established by Mr. Sagar Ranpura from Engineering & Management Sector who understood the need of in Pharma Equipment, Animal Housing Equipment, Laboratory Furniture, Hospitality Furniture especially in tailor made stainless steel fabrication in India.
- ◆ **RARA PHARMATECH & SURGICAL** has made lasting impression in the Industry through its sheer application of Manufacturing abilities and Innovative Ideas. Through its strong commitment to total customer satisfaction and exceptional quality **RARA PHARMATECH & SURGICAL** has reached distinctive heights in Leisure, Hospitality & Catering Industry in India.



OUR MISSION

- ◆ To be a leading and trusted Manufacturing Company for Pharmaceuticals Machinery, Animal Hosing Equipment, Hospitality Furniture, and Industry offering customized & value based solutions through Would lass Technology. Project Management & EPC Services.



ANIMAL FEEDING WATER BOTTLE

- ◆ **Autoclavable***
- ◆ **Leakage proof-** No water leakage from bottle
- ◆ **Assured water delivery-** Each bottle cap is assured for proper water delivery
- ◆ **Consistent thickness**
- ◆ **Wide mouth to aid filling and emptying, whilst also ensuring effective washing**
- ◆ **Volume graduations to aid volume measurements**

- ◆ **These cages are made of two parts, one of P.P. tray and top grill made of S.S. 304 material.**
- ◆ **Water bottle: Made of autoclavable food grade Polypropylene material of capacity 650ml with S.S. nozzle**
- ◆ **Food Hopper: J shaped food hopper made of S.S. 304 material is supplied with cage.**
- ◆ **Water bottle: Made of autoclavable food grade Polypropylene material of capacity 650ml with S.S. nozzle**



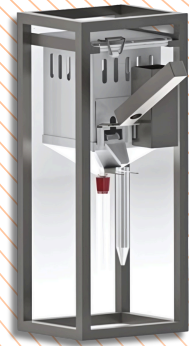
POLYPROPYLENE GUINEA PIG CAGES AND TROLLEY



RARA PHARMATECH & SURGICALS



◆ Especially useful for urine collection experiments The cage is provided with a cage body, perforated floor, Funnel, drinking water bottle of capacity 15ml, waste water collection tube and urine collection tube Cage body is fitted with tag holder for identification purpose. Urine and faeces falls on the S.S. Funnel and one separation plate of S.S. is fixed inside funnel which allows passage of only urine and not faeces, leading to collection of faeces above the separation plate and urine at the bottom in the



METABOLIC CAGES FOR RAT

◆ Rabbits, belonging to the small animal category of experimental animals but considerably larger than rats and mice, offer many advantages in experimental research. Given their docile and non-aggressive nature, rabbits are easily handled. Their larger size presents many possibilities in the observation, examination, and other procedures. In addition, rabbits also have short vital cycles such as gestation, lactation, and puberty, an advantage to longitudinal research paradigms.



RABBIT RESTRAINER



RARA PHARMATECH & SURGICALS



OUR VISION



◆ To provide superior class equipment for Healthcare companies at industry best prices and delight customers with our professional services.

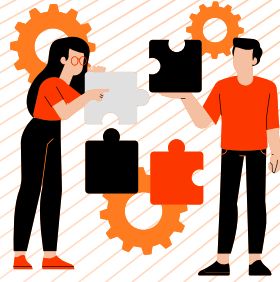


WHY RARA PHARMATECH & SURGICALS?

◆ Pharmaceuticals equipment are basically capital goods or long term investment which will last for decades keeping this thought in mind we at **RARA PHARMATECH AND SURGICALS** we believe to deliver exceptional quality product with value for money.

Name of CEO	Mrs. Kavita Sagar Ranpura
Nature Of Buisness	ManManufacturer, Exporters And Supplier
Year Of Establishment	2015
Number Of Employees	12
Annual Turnover	Rs. 50 Lakh To More Than 1 Crore
Market Cover	Globally

AFTER SALES SERVICE



- Great after sales services is always top priority for our customers. we had always stayed ahead of other by understanding clients need & providing excellent services **RARA PHARMATECH & SURGICALS** is more likely recommended by our customers to others. We always take proud of that.



WHERE DO WE SERVE?

- Our company is proud to offer the most exceptional quality standards of Pharmaceuticals Companies, Pharma Research Companies, Hospital, Laboratory.
- We also offering ANNUAL MAINTENANCE CONTRACT with Ultimate time line most economic prices.

Give call : **+91 9825164105**



GUINEA PIG PANS AND TROLLEY

- Made of AISI non-magnetic alkaline and chemical resistant 304 quality stainless steel material.
- Pans are made of S.S 304 grade heavy duty 16 SWG sheet.
- Pans are provided with 2 handles made from 4-5mm solid S.S. wire on each side for easy lifting
- Pan has provision for holding 2 water bottles and is supplied with 2 number of Polypropylene 650ml bottles with S.S. nozzle.
- Each pan has holes of 20mm diameters on all sides
- All the joints will be argon arc welded with smooth and glossy finish.

RABBIT CAGE TROLLEY



- System has six rabbit cages and each rabbit cage comprises of P.P. tray forming bottom tray, S.S. door, top & side mesh inbuilt fitted on the trolley.



**RARA
PHARMATECH
& SURGICALS**

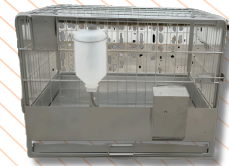


LABORATORY ANIMAL HOUSES EQUIPMENT

◆ **RARA's Animal Cages** are designed to facilitate animal welfare meet research requirements and minimise the experimental variations. However, while selecting the cage, guidelines for laboratory animal facilities by concerned government organization regarding the minimum space requirements for housing of laboratory animals must be followed. As caging equipment is one of the most important factors in the physical and social environment of the experimental animal, **RARA** has developed the largest range of cages meeting current norms and guidelines.



RAT CAGE



STAINLESS STEEL RABBIT BREEDING CAGE

◆ Cleanroom table features heavy gauge type 304 all stainless steel construction, 14 gauge electropolished stainless steel top with 1.5"-diameter rolled down edges at front and rear, ends turned down 90° at 1.5" providing for flush installations, patent uni-lok_ stainless steel gusset system, with H-Frame base and 1" adjustable stainless steel bullet feet. Includes stainless steel assembly hardware. Shipped knocked-down.



RAT CAGE TROLLEY

- ◆ **Racks / Trolleys for holding animal cage's** either mice or rat is available in 2 types- Hanging Type and Sliding Type.
- ◆ In Hanging Type, Cage is kept in the rack with the collar of cage in hanging position on the supports provided in the rack.
- ◆ In case of Sliding Type, the cage is kept in the rack with its base sliding on the supports provided in the rack.

◆ **RARA's Laboratory Animal Cages** are designed to facilitate animal welfare meet research requirements and minimise the experimental variations. However, while selecting the cage, guidelines for laboratory animal facilities by concerned government organization regarding the minimum space requirements for housing of laboratory animals must be followed. As caging equipment is one of the most important factors in the physical and social environment of the experimental animal, **RARA** has developed the largest range of cages meeting current norms and guidelines.

MICE CAGE



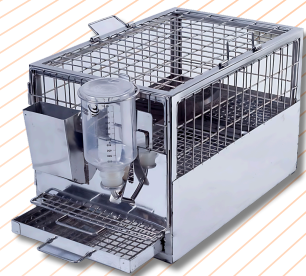
**RARA
PHARMATECH
& SURGICALS**



**RARA
PHARMATECH
& SURGICALS**

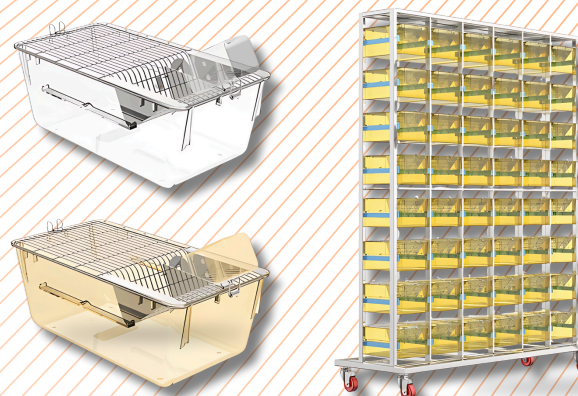


GUINUE PIG CAGES



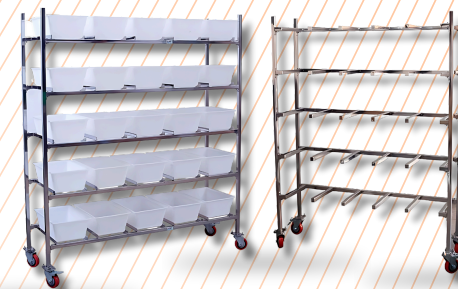
- ◆ Made of AISI non-magnetic alkaline and chemical resistant 304 quality stainless steel sheet and wire.
- ◆ Main frame of the cage is made of heavy duty S.S. 304 square pipe of 12mm x 12mm x 16 swg and covered up to a height of 150mm from bottom with SS sheet of 22swg on three sides except front. Wire mesh of Size 1" x 1/2" x 12 swg will be welded inside the SS square pipe on all three side including top of cage.
- ◆ Cage door having arrangement of fixing water bottle and food hopper with a card holder. The door will be made of wire mesh of 1" x 1/2" x 12swg welded on a frame of 5mm SS rod and covered with 22swg SS sheet.
- ◆ J shaped food hopper made of SS 304 22swg
- ◆ Polypropylene water bottle of capacity 650ml fitted with cap having S.S. bent nozzle
- ◆ Bottom floor net of 12mm x 12mm x 12swg SS wire welded on a frame of 5mm SS rod. The cage is provided with S.S. L shaped angle of 20mmx20mmx16swg for bottom floor net.
- ◆ Excreta Tray made of 22swg Stainless steel sheet with turned edges. The cage is provided with S.S. L shaped angle of 20mmx20mmx16swg for Excreta Tray.
- ◆ Size: 300mm x 450mm x 300mm (L x D x H)

MICE CAGE TROLEEY



- ◆ Polysulfone Mice and Rat Cages are designed to facilitate animal welfare, meet research requirements and minimize experimental variations. However, while selecting the cage, guidelines for laboratory animal facilities by concerned government organizations regarding the minimum space requirements for housing of laboratory animals must be followed. As caging equipment is one of the most important factors in the physical and social environment of the experimental animal, **RARA** has developed the largest range of cages meeting current norms and guidelines.

TROLLEYS FOR MICE AND RAT CAGES



- ◆ Racks / Trolleys for holding animal cages either mice or rat are available in 2 types- Hanging Type and Sliding Type.
- ◆ In Hanging Type, the Cage is kept in the rack with the collar of cage in hanging position on the supports provided in the rack.
- ◆ In case of Sliding Type, the cage is kept in the rack with its base sliding on the supports provided in the rack.



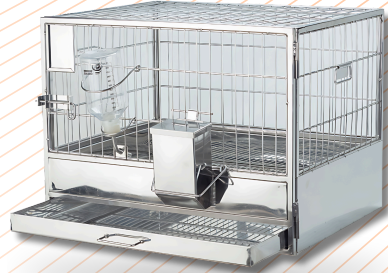
**RARA
PHARMATECH
& SURGICALS**



**RARA
PHARMATECH
& SURGICALS**



RABBIT CAGE

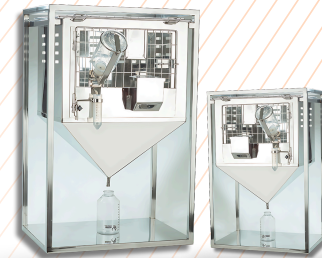


- ◆ Made of AISI non magnetic alkaline and chemical resistant 304 quality stainless steel sheet and wire.
- ◆ Main frame of the cage made of heavy duty S. S. square pipe of 12.7mm x 12.7mm x 16 swg and covered up to a height of 155mm from bottom with S.S. sheet of 22swg on three sides except front. Wire mesh made of 2.5mm and 5mm S.S. rod welded inside the S.S. square pipe on all three side including top of cage
- ◆ Cage door has a fixed label holder and arrangement for fixing water bottle and food hopper. The door will be made of wire mesh of 2.5mm and 5mm S.S. rod welded on a frame of 5mm SS rod and covered with 22swg S. S. sheet.
- ◆ J shaped food hopper made of S.S.30422swg.
- ◆ Polypropylene water bottle of capacity 650ml fitted S. S. bent type nozzle
- ◆ Bottom floor net of 12x26mm is made of 2.5mm & 5mm SS wire welded on a frame of 5mm SS rod. Floor net is fixed in the bottom and non-removable type.
- ◆ Excreta Tray made of 22swg Stainless steel sheet with turned and smoothed edges. The cage is provided with S. S. L shaped angle of 20mm x20mm x 16swg for Excreta Tray.
- ◆ 600mm x 450mm x 450mm (L x W x H) 2 Floor Space : 2444 cm

GUINEA PIG CAGES TROLLEY



- ◆ Introducing the Stainless Steel Guinea Pig Cage Trolley from **RARA PHARMATECH**. This high-quality trolley is designed with multiple spacious cages, featuring durable stainless steel mesh and easy-to-clean polypropylene trays. The swivel castor wheels ensure effortless mobility, while built-in brakes provide stability when needed.
- ◆ Perfect for both home and professional use, the trolley's vertical design maximizes space efficiency. Additional storage space underneath the cages keeps your pet supplies organized. With easy-access doors, feeding and cleaning are a breeze, ensuring a hygienic environment for your guinea pigs.



METABOLIC CAGE FOR LARGE ANIMAL

- ◆ **RARA's** metabolic cages for large rodents are equipped with system for separation of faeces and urine. Each system is divided in 3 parts- cage body, separation hopper and feed- water supplying unit. Separation hopper is fitted with S.S. mesh for separation of urine and faeces. Faeces are collected above the mesh while urine goes down through the tube. Design and finish are such that the animal has a maximum comfort. Maintenance is efficient and fast. Every unit comes with cage floor, food hopper, water bottle, urine collection system.



**RARA
PHARMATECH
& SURGICALS**



**RARA
PHARMATECH
& SURGICALS**

