

DARSHAN

THE
CUTTING
EDGE OF
VENEER
INDUSTRY





About us ...

DARSHAN Mechanical & Engineering works has been established for over 30 years and is engaged in designing & manufacturing of ply wood mother machinery specialised in “hydraulic & pneumatic peeling machinery”, backed by a team of qualified experienced technocrats constantly striving for upgrading & developing new technology to achieve standardized quality which is “better than the best”. Though quality & technology is a continues process of improvement through innovation for which we are committed .

With the employees effort , our quality is appreciated by worldwide customers. Reviewing the history, DARSHAN is seen always embracing the business concepts of “explore the innovation, create the value and pursue the customer satisfaction”. On the path of DARSHAN development, we contribute ourselves on providing the best peeling experience for customers Focusing on the future, we have to keep obtaining the latest technologies and put the energy in talents acquirement and cultivation for extending the competence in the global machine plywood industry.

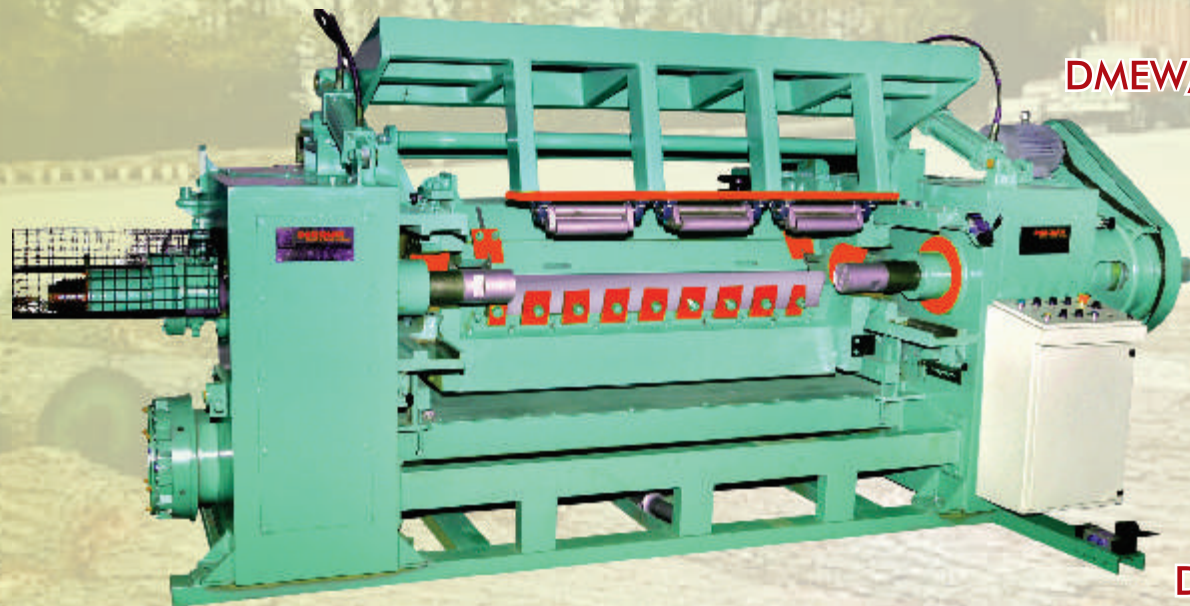
Salient Features

- Pre –aligned in the plant
- Massive design
- Highest quality veneer product
- Simple to operate n maintain
- Higher recovery minimum end core dia 60-70mm “subject to timber quality”
- Vibration damping cast iron casting used extensively throught out the machine for smoother veneer.
- Pressure bar adjustment for consistent veneer
- Bolts bar for stability & accurate adjustments
- Hydraulically tilted pressure bar
- Back-up-rolls are provided for vibration free cutting of the veneer.
- Hardwood can be rounded up easily without damaging the grippers.
- Negligible wear and tear



Excellence is our Tradition

BUILT IN A SINGLE PIECE
56" LOG PEELING MACHINE (CORE VENEER)

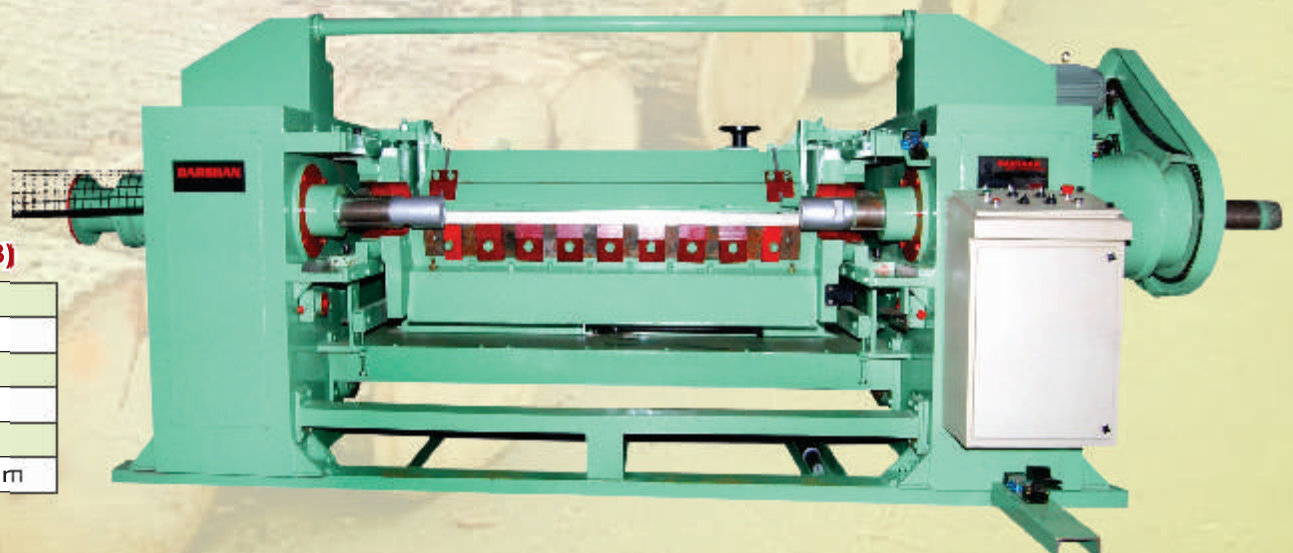


DMEW/SPL-101

TECHNICAL SPECIFICATIONS (DMEW/SPL-101)

Diameter of log To Be Peeled	1000 mm
Spindle R.P.M	110/300
Processing Length	1420 mm
Residual log Diameter (as per timber)	40 - 50 mm
Power H.P	45
Veneer Thickness	0.93 - 3.50 mm

DMEW/SVPL-103



TECHNICAL SPECIFICATIONS (DMEW/SPVL-103)

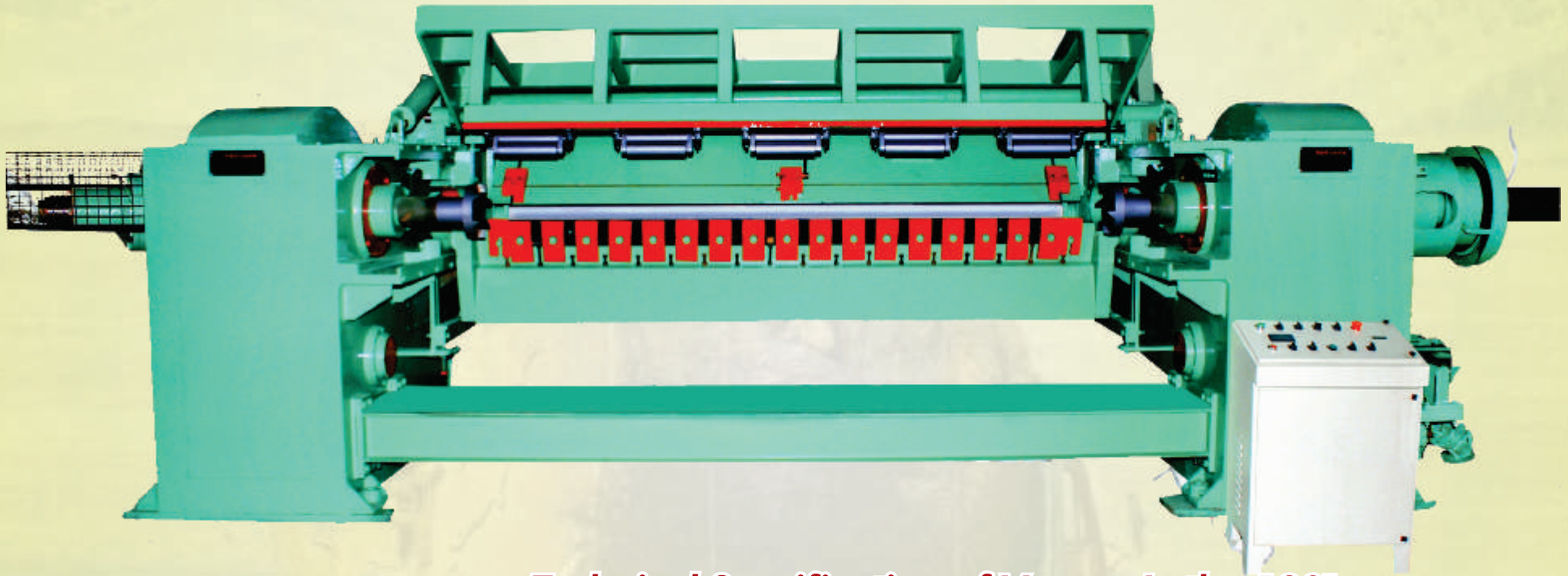
Diameter of log To Be Peeled	1000 mm
Spindle R.P.M	110/300
Processing Length	1420 mm
Residual log Diameter (as per timber)	50 - 70 mm
Power H.P	40
Veneer Thickness	0.93 - 3.50 mm

Better than the Best

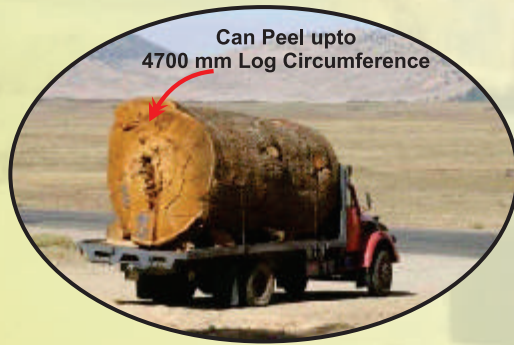
Excellence is our Tradition

BUILT IN A SINGLE PIECE

10 FT FACE VENEER PEELER



Technical Specification of Veneer Lathe 130"



- Single Dia : 1500 mm
- Spindle RPM : 150
- Digital Control System of Pressure Bar Horizontal & Vertical movement.
- Knife cutting angle can be seen longitudinal.
- Digital system dia of the log can be seen on screen.
- Auto and Manual mode of speed increasing of the lathe
- Machine can be set like cruise control that helps in Synchronising reeling attachment.
- After peel dia : 130mm as per timber quality.
- Veneer Thickness : 0.25-3.50
- Power main motor HP : 125 with 2 speed gear box.
- Total Power HP : 170
- Knife Length : 3300 mm
- Transmission through Gear Trains
- Branded switch gear electrical panel.
- Extra heavy duty main bearings
- Heavy Duty caste iron knife holder & pressure bar.
- Minimum log length to be chuck 1800 mm with attachment
- Heavy duty M.S. Iron Fabrication body.
- All shafts / Spindles EN series.
- Pneumatically operated Feed Mechanism.
- Disc Drive Break / Clutch System
- Air Compressor
- Power Pack
- Auto Lubrication system through cooling pumps

Better than the Best

Excellence is our Tradition

8FT FEET FACE VENEER PEELER

DMEW/RVML-1002



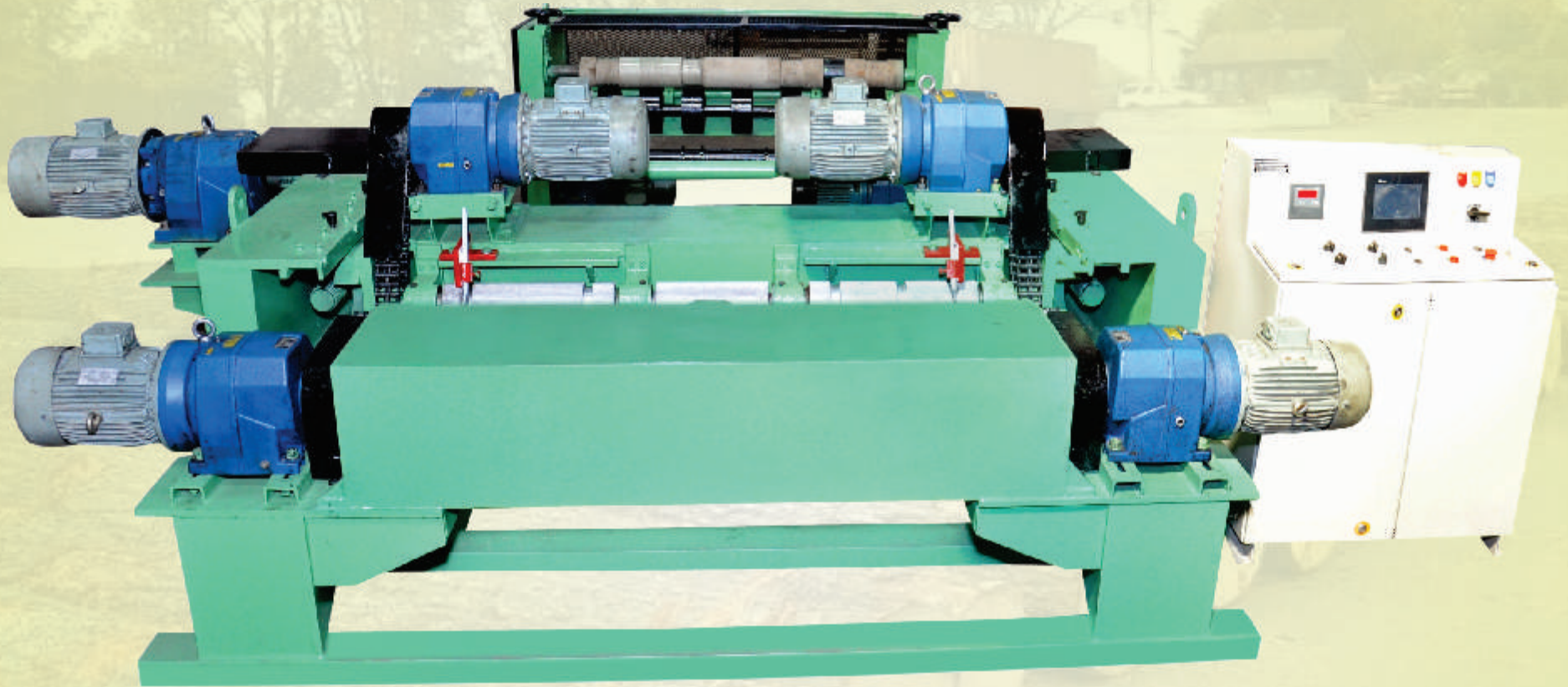
TECHNICAL SPECIFICATIONS (DMEW/RVML-1002)

Diameter of log To Be Peeled	1500 mm
Spindle R.P.M	150
Processing Length	2740mm
Residual log Diameter (as per timber)	130 - 150 mm
Power H.P	95
Veneer Thickness	0.25-3.50mm

Better than the Best

Excellence is our Tradition

SPINDLE-LESS LOG VENEER MACHINE WITH AUTO CUTTER (DMEW/SL-350)



4' Servo Spindleless Technical Data

- Main Feed Servo Motor 15 KW
- Roller Dia 121 mm
- Roller Main Motor : 7.5 KW
- Auto Veneer cutter 20 ft with Servo Motor 3.5 KW
- Thickness .5 to 3 mm
- Multi Speed
- Thickness Tolerance +0.075 mm
- Log Lifting attachment with waste roller outlet conveyor system
- Purchasers have to provide earthing arrangements 3 pits earthing working criteria from Neutral to Earth 2-5 volts ...

Better than the Best

Excellence is our Tradition

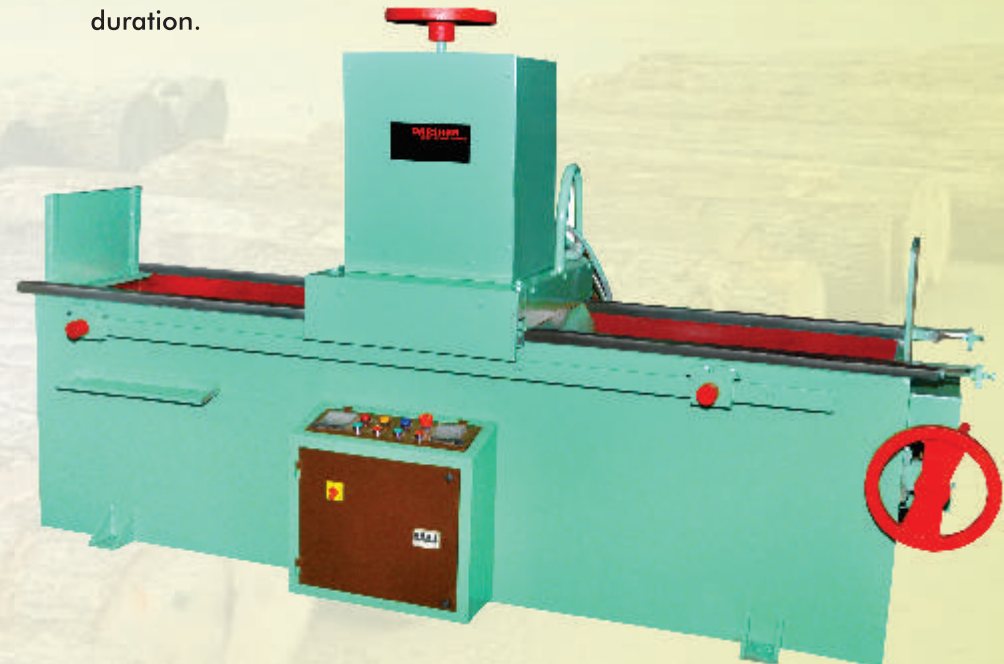
High Speed Reeling System Technical Data



- 15' Conveyor line with scrap conveyor system
- Auto & Manual mode for High Speed Reeling
- Operator can see the reeling running diameter on screen
- Synchronized system due to auto & manual mode of reeling system
- Conveyor have light system to see the veneer quality.
- Reeling system having HD camera fitted on the operators desk
- Power HP 7.5 KW 10 HP

KNIFE GRINDER

Knife Grinder Heavy Duty Fully Automatic is in high demand for its utility in diverse industries. The production process of the Automatic Knife Grinding Machine is supervised by a team of highly skilled experts. We make available the quality range of Automatic Knife Grinding Machine at rock bottom prices within a predetermined duration.



4-10 Ft Grinding Machine Technical Data

- Machine table moveable from 0 to 90 degree
- Grinding Angle
- Heavy Duty Bed
- Automatic Down Feed
- Complete with all electrical motors and coolant pumps
- Grinding head with 8 grinding stones
- Movement of X Axis control by variables Drives 0-20 m/s.
- Overhead motor 15 HP
- Total HP 17 HP

Better than the Best

OUR QUALITY POLICY :
*Better lose money rather than losing quality,
faith and relation with the customers*



It's a Wood Engineering

DARSHAN MECHANICAL & ENGINEERING WORKS

EXPORTERS, DESIGNERS & MANUFACTURERS OF FACE & CORE VENEER PLANTS

By Pass Road, Opp. Chandpur Masjid, Yamunanagar - 135 001(HARYANA) INDIA

Mob. : 93545-57697, 93546-57697, 94160-57697, 99919-93323

Mob. : 9991-020202, 8398-020202, 8397-020202 Tel. : 01732 - 257697 Fax : 01732 - 256697

Email : darshanmechanical@gmail.com website : www.darshanengg.com, www.darshanengg.co.in

f : <https://www.facebook.com/pages/darshan-mechanical-engineering-works/213876521987133?ref=hl>

YouTube : <https://www.youtube.com/channel/UCPOCuEORqjKlcvYR-XVRzPA>