

# Namdhari

## INDUSTRIAL WORKS



**Manufacturer, Supplier & Exporter of**  
*Cattle Feed/ Poultry Feed Plant*



**Find New - Feed Mill Solutions**



# Company Profile

Established in the year **1987**, **Namdhari Industrial Works** is engaged in manufacturing, wholesaling and exporting of Belt Conveyor, Bucket Elevator, Cattle Feed Machine, Pellet Mill, Cattle Feed Plant. These products are extremely admired in the industry owing to their characteristics and low prices.

# Company Products Line



- 1.Cattle feed plant
- 2.Pellet feed plant
- 3.Poultry feed plant
- 4.Fully automatic feed plant
- 5.Animal feed plant
- 6.Mixer machine & Hemmer mill
- 7.Clumber & Pellet Cooler



# *Make Extrusion Feed for Aquatic animal and Pet*



Extrusion feed is made by feed extruder, while compressed feed is made by feed pellet press.



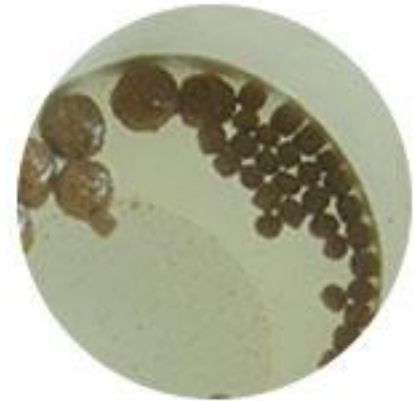
Compressed Feed Pellets



for poultry / livestock



for pet



for aquatic animal

Extrusion Feed Pellets

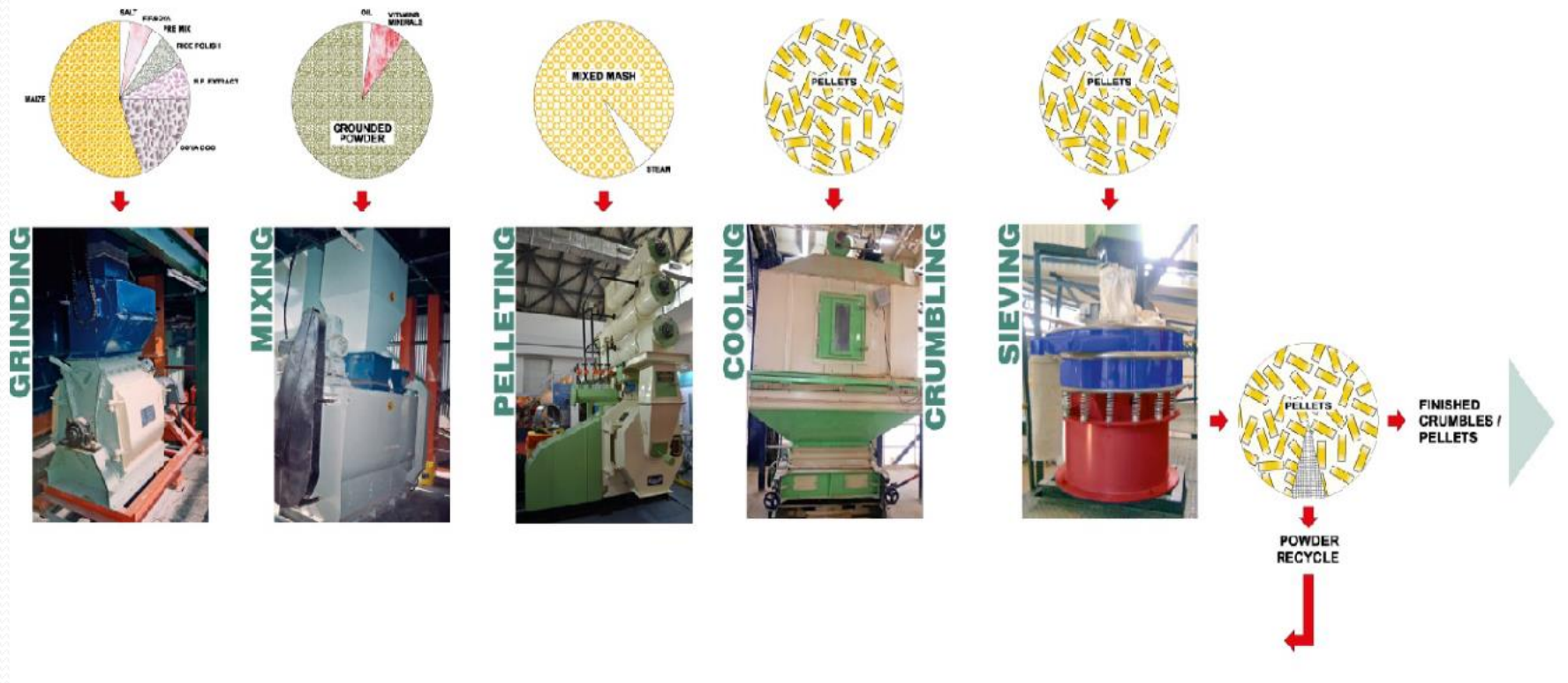


# Feed Plant Capacity Range

NIWM Feed Plant Model	Poultry feed 3mm Ø Pellets	Poultry feed 8mm Ø Pellets
Mobile Plant / R & D Plant	Mobile Plant / R & D Plant	500 to 750 Kgs / Hr
Junior Feed Plant	Junior Feed Plant	3 Tons / Hr
Senior Feed Plant	Senior Feed Plant	6 Tons / Hr
Super Senior Feed Plant	Super Senior Feed Plant	12 Tons / Hr
Jumbo Plant	Jumbo Plant	15 Tons / Hr



# Cattle feed Plant Layout



# Hammer mill

## HAMMER MILL CAPACITY RANGE

NIWM Model	Motor Power	Capacity	
		For Mash (6mm Hole Screen)	For Pellet ( 3mm Hole Screen)
HM 350	10 to 15 HP	2 to 3 Tons / Hr	1 to 1.5 Tons / Hr
HM 450	25 to 30 HP	4 to 5 Tons / Hr	2 to 3 Tons / Hr
HM 550	50 to 60 HP	8 to 10 Tons / Hr	5 to 6 Tons / Hr
HM 650	75 to 100 HP	14 to 15 Tons / Hr	9 to 10 Tons / Hr
HM 750	100 to 150 HP	18 to 20 Tons / Hr	14 to 15 Tons / Hr





# Grinder mill



Usage/App lication	Industrial
Material	Mild steel
Voltage	220/380/400/415V
Capacity	7000 Kg/hr.
Automatic Grade	Automatic
Power	Approx 1500w

# Mixer Machine



NIWM Model	Volume (ltrs)	Motor Power	Capacity / Hr. (500 Kgs / M <sup>3</sup> Bulk Density)
BM 500	1000	15 HP	3 to 4 Tons / Hr ( 4 to 6 min. mixing)
BM 1000	2000	20 HP	6 to 8 Tons / Hr ( 4 to 6 min. mixing)
BM 1500	3000	30 HP	9 to 12 Tons / Hr ( 4 to 6 min. mixing)
OBM 2000	4000	40 HP	12 to 16 Tons / Hr ( 4 to 6 min. mixing)
BM 3000	6000	50 HP	18 to 22 Tons / Hr ( 4 to 6 min. mixing)



# Pellet Mill



Model	Motor HP	Capacity on Poultry feed 3mm Ø Pellets	Capacity on Cattle feed 8mm Ø Pellets
Mini	20	300 to 500 Kgs / Hr.	500 to 750 kgs / Hr.
Junior	60	2 Tons / Hr.	3 Tons / Hr.
Senior	120	5 Tons / Hr.	6 Tons / Hr.
Super senior	220	10 Tons / Hr.	12 Tons / Hr.
Jumbo	250	12 Tons / Hr.	15 Tons / Hr.
Big Jumbo	350	15 Tons / Hr.	20 Tons / Hr.



# Pellet Cooler



NIWM Model	Motor Power		Blower Motor	Capacity / Hr.
	Cooler	Feeder		
CFC 3 x 5	1 HP	1 HP	10 HP	2 to 3 Tons / Hr
CFC 4 x 6	2 HP	1.5 HP	15 HP	5 to 6 Tons / Hr
CFC 5 x 10	2 HP	1.5 HP	25 HP	10 to 12 Tons / Hr
CFC 8 x 8	3 HP	1.5 HP	40 HP	14 to 16 Tons / Hr





# Clumber



NIWM Model	Roll Size in mm	Motor Power		Capacity / Hr.
		Feeder	Crumbler	
PC 125	Ø 125 x 750	1 HP	5 HP	2 to 3 Tons /Hr
PC 150	Ø 150 x 1250	2 HP	7.5 HP	4 to 5 Tons / Hr
PC 250 S	Ø 250 x 1250	2 HP	10 HP	8 to 10 Tons / Hr
PC 250 L	Ø 250 x 1500	2 HP	15 HP	12 to 15 Tons / Hr



# Material Handling Equipment

- ♦ Bucket Elevator - to transfer the material from ground level to desired height.
- ♦ Conveyors Screw Type, Paddle type, Chain Type, Belt type
- ♦ The range of conveyors and elevator are developed to match with the needs of storage and movement plans.



**Screw Conveyor**



**Chain Conveyor**



**Bucket Elevators**



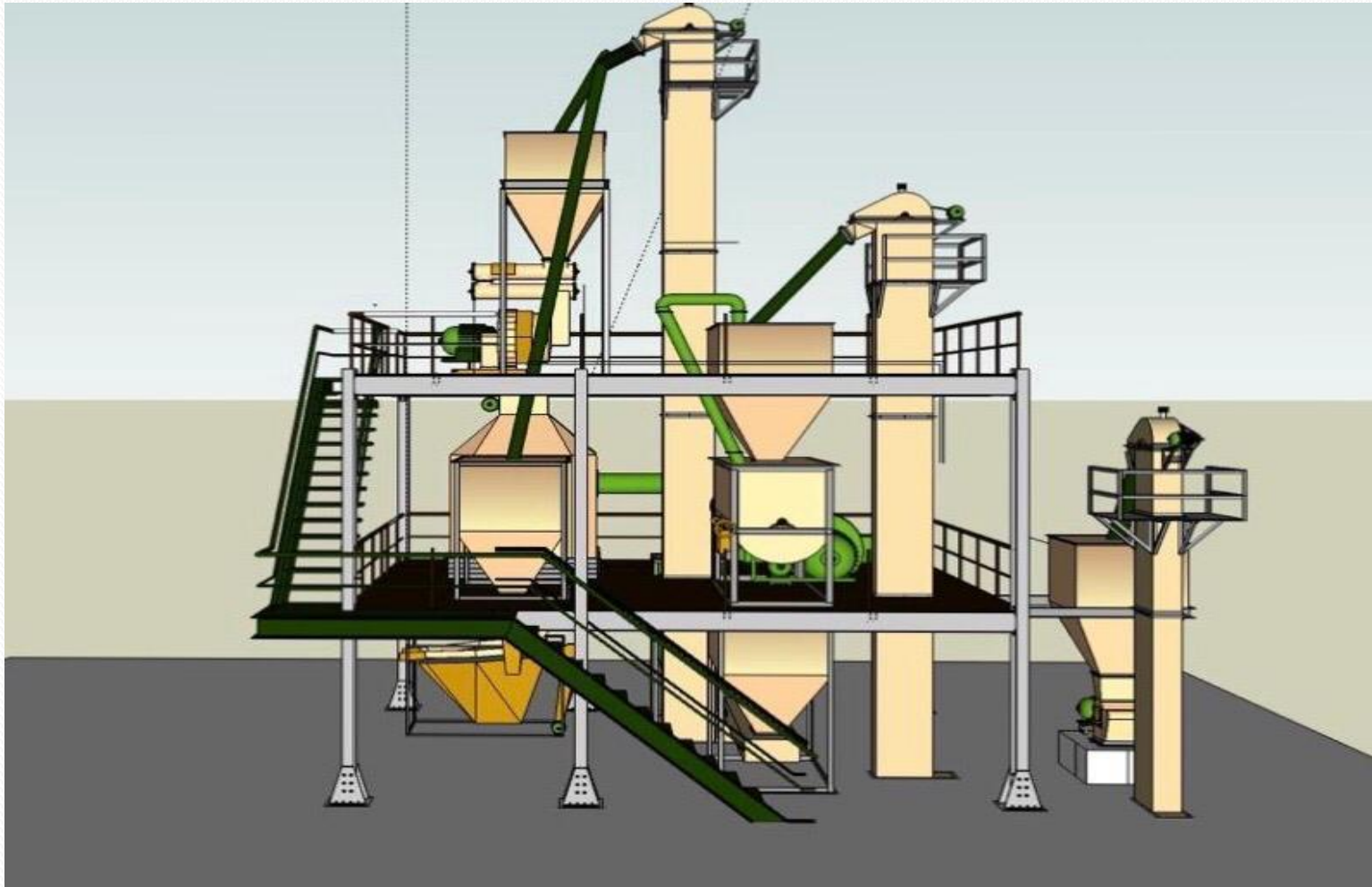
**Slat Conveyor**

# Bagging Machine

In order to pack for storing, transporting and selling, automatic packing machine can weigh and pack the feedstuff pellets automatically with high accuracy.



# Cattle Feed Plant







**Marketing Office** : **D-26, Focal Point, Khanna-141401 (Punjab)**  
**: Plot No. 4175, Dhandra Road, Near LIG Flats, Dugri, Ludhiana.**

---

**Website** : **[www.namdhariindustrialworks.com](http://www.namdhariindustrialworks.com)**  
**Write us on** : **[info@namdhariindustrialworks.com](mailto:info@namdhariindustrialworks.com), [export@namdhariindustrialworks.com](mailto:export@namdhariindustrialworks.com)**  
**Call us on** : **01628-500427, +91-89685-70292, 98142-75166, 70874-31216**