



Sri Kalyan Export Private Limited

ORGANIC COTTON GARMENTS MANUFACTURERS

SA - 8000 CERTIFIED COMPANY



Sustainable

Ethical &

Empowerment



www.srikalyanexportindia.com



ABOUT COMPANY

SRI KALYAN EXPORT WAS ESTABLISHED IN THE YEAR 1978 IN SOUTH INDIA AND ENTERED INTO WOVEN FABRICS HOME TEXTILES & WOVEN GARMENT INDUSTRIES WITH THE LATEST TECHNOLOGY WEAVING MACHINES IMPORTED FROM ITALY FOR SUPERIOR QUALITY WOVEN FABRIC PRODUCTION, FOR GARMENTS WE IMPORTED "JUKI" STITCHING MACHINES FROM JAPAN.

THE MANAGEMENT TEAM ACHIEVED MERITS OF HIGH PROFILE IN THE INTERNATIONAL MARKET BY ITS COMMITMENT FOR ABSOLUTE QUALITY IN EVERY TRANSACTIONS, TIME-BOUND DELIVERY, IRRESPECTIVE OF THE VOLUMES, LASTING IMPRESSION IN TERMS OF WORK ETHICS, AFFORDABLE YET COMPETITIVE PRICING & STUNNING DISPLAY OF WORLD CLASS DESIGNS.

SRI KALYAN EXPORT PRIVATE LIMITED (GOVT RECOGNIZED STAR EXPORT HOUSE) WAS INCEPTED IN 2001. AS A MANUFACTURING EXPORTS OF HOME TEXTILES AND WOVEN FABRICS, BAGS & GARMENTS WE SUCCESSFULLY DEVELOPED CUSTOMERS IN VARIOUS EUROPEAN COUNTRIES, THE UNITED STATES AND AUSTRALIA. OVER A PERIOD OF THREE DECADES, OUR EXPORT BUSINESS HAS GROWN MULTIFOLD AND GOT US A PREMIUM MEMBERSHIP IN HANDLOOM EXPORT PROMOTION COUNCIL (HEPC) MINISTRY OF TEXTILES GOVERNMENT OF INDIA, APPAREL EXPORT PROMOTION COUNCIL (AEPc) & POWERLOOM DEVELOPMENT & EXPORT PROMOTION COUNCIL (PDEXCIL).

VISION

WE AIM TO BE THE BIGGEST PLAYER IN THE ORGANIC COTTON TEXTILES SECTOR, BY BEING CREATIVE & INNOVATIVE, BY UNDERTAKING HIGH LEVEL OF RESPONSIBILITY, SUSTAINABILITY, ACCOUNTABILITY & INTEGRITY & BY ENSURING A CONTINUOUS IMPROVEMENT OF QUALITY IN ALL AREAS OF OUR BUSINESS.

MISSION

OUR MISSION IS TO CREATE AN ENTERPRISE THAT CAN PROVIDE SUITABLE CONDITIONS FOR AN ESSENTIAL DEVELOPMENT OF OUR ENVIRONMENT, SOCIETY & INDIVIDUALS.

IMPACT

WE LIKE TO HAVE OUR BUSINESS ACHIEVE 3 DIMENSIONAL IMPACT - SOCIAL, ECOLOGICAL & ECONOMICAL - IN SOCIETY, FOR ENVIRONMENT AND FOR PEOPLE IT EMPLOYS DIRECTLY.

RESPONSIBILITY

ETHICAL, ENVIRONMENTAL & SOCIAL RESPONSIBILITY IS OUR CORE VALUE UPON WHICH WE HAVE BUILT PROCESSES THROUGH THE ENTIRE SUPPLY CHAIN.

QUALITY ASSURANCE

WE ENDEAVOUR TO DELIGHT OUR ESTEEMED CUSTOMERS BY DESIGNING, MANUFACTURING AND SUPPLYING QUALITY WOVEN FABRICS, HOME FURNISHING FABRICS AND MADE UPS .BAGS, GARMENTS & BABY CARE PRODUCTS CONFORMING TO CUSTOMER REQUIREMENTS AND ADHERING SOCIAL AND CLEANER PRODUCTION PRACTICES, THIS IS ACHIEVED BY ADOPTING LATEST TRENDS IN THE INDUSTRY, USING EFFECTIVE COMMUNICATION METHODS, PROVIDING REGULAR TRAINING TO OUR WORKFORCE AND CONTINUAL IMPROVEMENT IN QUALITY MANAGEMENT SYSTEMS. GOTS & ORGANIC EXCHANGE CERTIFIED FOR SKIN FRIENDLY, ENVIRONMENT FRIENDLY PRODUCTS

ISO 9001:2015 CERTIFIED QUALITY MANAGEMENT SYSTEM. **OEKO TEX STANDARD 100 (CLASS 1)** WE ARE CERTIFIED WITH OEKO TEX STANDARD MAKE SURE OUR PRODUCTS ARE IN THE LEVEL OF STANDARDS ACCEPTED BY OEKO TEX WORLD'S MOSTLY ACCEPTED STANDARDS FOR QUALITY. **FAIR TRADE (FLOCERT)** CERTIFIED MANUFACTURER **GOTS (GLOBAL ORGANIC TEXTILE STANDARD)** -WE ARE ONE OF THE LEADING GOTS CERTIFIED ORGANICS COTTON HOME TEXTILES, GARMENTS & WOVEN FABRIC, BAGS, BABY CARE PRODUCT MANUFACTURER & EXPORTER IN SOUTH INDIA, WHICH ENSURES 100% ORGANIC PRODUCTION METHODS FOLLOWED FROM CULTIVATION OF COTTON TO CONSIGNMENT OF GOODS. **BCI (BETTER COTTON INITIATIVE)** CERTIFIED MANUFACTURER **SA 8000 (SOCIAL ACCOUNTABILITY)** CERTIFIED MANUFACTURER.

TEXTILE COUNSEL MEMBERSHIP - MINISTRY OF TEXTILES GOVT OF INDIA : WE ARE ONE OF THE PREMIUM MEMBERSHIP HOLDERS IN FOLLOWING PRESTIGIOUS TEXTILE COMMITTEE WHICH IS MANAGED BY MINISTRY OF TEXTILES, GOVERNMENT OF INDIA HANDLOOM EXPORT PROMOTION COUNCIL (HEPC) POWERLOOM DEVELOPMENT & EXPORT PROMOTION COUNCIL (PDEXCIL) & APPAREL EXPORT PROMOTION COUNCIL (AEPc)

ETHICAL BUSINESS

SUSTAINABILITY

NO CHILD & FORCED LABOUR

SOCIAL RESPONSIBILITY

RECYCLE COTTON

ECO - FRIENDLY

GREEN INITIATIVE

FAIR TRADE PRACTICES



Oeko-Tex



GOTS



Organic Exchange



SA 8000-2008

**CERTIFIED QUALITY
PROVEN VALUE**



FAIR TRADE



HEPC



PDExCIL



ISO 9001:2015

Our Commitment to high quality standards and environmental friendly approach are endorsed by internationally recognized certificates

Our Range of Fabric quality Standards



Our Production Capacity

Category	Machines	Production Capacity
Cone Dyeing	Dalal (Cheese)	1.5 Tons / Day
Fabrics	Picanol Rapier	200000 Mts / Month
Print Fabrics	Rotary Print	300000 Mts / Month
Stitching	JUKI Japan	150 Machines



FLANNEL



CAMBRIC



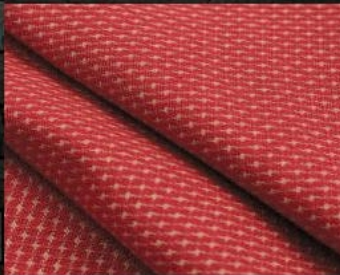
CHECKS



CHAMBRAY



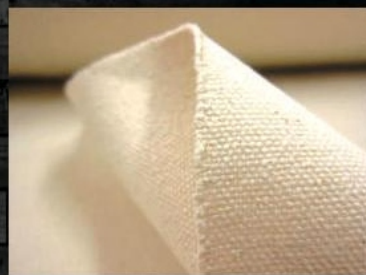
CRINKLE



DOBBY



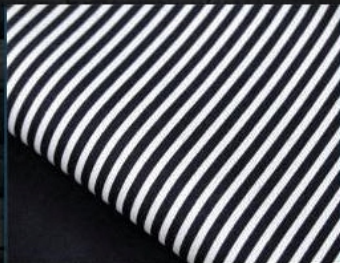
**DOUBLE
CLOTH**



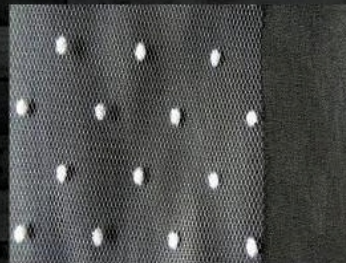
GREIGE



POPLIN



STRIPE



SWISS DOT



TERRY

WOVEN FABRIC COLLECTIONS



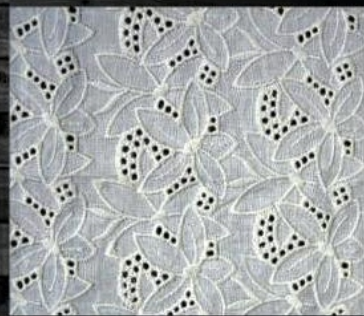
CANVAS



CAMOUFLAGE



**COATED
FABRIC**



EMBROIDERY



JACQUARD



MUSLIN



PATCH WORK



POLKA DOT



RIB



SEER SUCKER



TWILL / DRILL



WAFFLE



VOILE



SLUB



PRINTED



BABYS

CLOTHING

PRINTED / YARN DYED / SOLID / CHAMBRAY

PRODUCT VARITIES

- ▶ **BODY SUIT**
- ▶ **HEAD BAND**
- ▶ **PANTY**
- ▶ **DUNGAREE SET**
- ▶ **SHORTS**
- ▶ **PJ SET**
- ▶ **HOOD ITEMS**
- ▶ **HAT**
- ▶ **SLEEP SUIT**



KIDS C



LOTHING

PRINTED / YARN DYED / SOLID / CHAMBRAY
PRODUCT VARITIES

- ▶ GIRLS DRESS
- ▶ BODY SUIT
- ▶ SKIRT
- ▶ HEAD BAND
- ▶ BOYS SHIRT

- ▶ DUNGAREE SET
- ▶ SHORTS
- ▶ PJ SET
- ▶ HOOD ITEMS
- ▶ PANTY
- ▶ HAT



WOMENS

CLOTHING



(PRINTED / YARN DYED / SOLID / CHAMBRAY)

PRODUCT VARITIES

- ▶ PRINTED TOPS
- ▶ SHIRT
- ▶ SKIRT
- ▶ KURTA
- ▶ SHORTS

- ▶ CHAMBRAY TOPS
- ▶ DRESS
- ▶ PANT
- ▶ PYJAMA SET



(PRINTED / YARN DYED / SOLID / CHAMBRAY)

PRODUCT VARITIES

- ▶ **SHIRT**
- ▶ **BOXER SHORTS**
- ▶ **PYJAMA SET**



MENS CLOTHING





Cone Dyeing



Weaving



Designing



Cutting



Cutting



Cutting



Our Showroom



MANUFACTURING EXCELLENCE
IS AT THE CORE OF OUR
BUSINESS

Quality Check



Stitching





SUSTAINABLE SOURCING



Our Production Capacity

Category	Machines	Production Capacity
Cone Dyeing	Dalal (Cheese)	1.5 Tons / Day
Fabrics	Picanol Rapier	200000 Mts / Month
Print Fabrics	Rotary Print	300000 Mts / Month
Stitching	JUKI Japan	150 Machines

Our Facilities & Production Capacity

Sri Kalyan Export have own Woven fabric manufacturing unit that works closely with customers and merchandisers to produce the best quality fabrics. Established relationships with the best suppliers in the region allow us to source top quality raw materials according to buyer specifications. All sample garment development is carried out in a centralized product development center and dedicated sample room. This enable us to streamline the entire development process, minimize lead times and ultimately deliver the best quality finished product.

we are constantly working on optimizing each stage of our value chain. This is achieved by way of effective communication, centralization of certain activities and comprehensive quality control. This allows us to adapt seamlessly to each of our unique customer's requirements while consistently streamlining the process at every stage from development to delivery.

Quality Check



Fire Safety



Hand Work



Training

Checking



Ironing



Inspection



Packing





Company Website

www.srikalyanexportindia.com

www.organiccottondress.com

www.organicclothingsindia.com

Follow us on

 <https://www.facebook.com/ske.india.52>

 https://www.instagram.com/sri_kalyan_export/

 https://in.pinterest.com/srikalyanexport/_created/

 <https://www.youtube.com/channel/UCajJvoZHfoA4KT4VZna480w/video>

 WhatsApp No : +91 96775 53377



SRI KALYAN EXPORT PVT LTD.,

Head Office : Woven Fabrics Division

No.192/4, Iswarya Garden, Sengodampalayam,
Villarasampatti Post, Erode - 638107, TN, **India.**

Mobile : +91 96775 53377 | Mail : kalyan@srikalyanexportindia.com

Branch Office : Garments Division

No.192/7, Periya Sengodampalayam,
Villarasampatti Post, Erode - 638107, TN, **India.**

Branch Office : Home Textiles

No.135, Ramanujapuram nagar west,
Covai road south, Karur - 639002, TN, **India.**

Mobile : +91 95666 89993 | Mail : merch8@srikalyanexportindia.com