



# POOL DOCTOR

COMPLETE SWIMMING POOL SOLUTION

**8 YEARS EXPERIENCE**

Extensive Range of Pool Equipment  
& Accessories

# CONTENT

|           |                              |       |
|-----------|------------------------------|-------|
| <b>1</b>  | <b>FILTRATION SYSTEM</b>     | 2-3   |
| <b>2</b>  | <b>PUMPS</b>                 | 4-7   |
| <b>3</b>  | <b>POOL BASIN FITTING</b>    | 8-15  |
| <b>4</b>  | <b>MAINTENANCE EQUIPMENT</b> | 16-17 |
| <b>5</b>  | <b>CLEANING TOOLS</b>        | 18-19 |
| <b>6</b>  | <b>CHEMICALS</b>             | 20-21 |
| <b>7</b>  | <b>LED LIGHTS</b>            | 22-23 |
| <b>8</b>  | <b>POOL LADDERS</b>          | 24-25 |
| <b>9</b>  | <b>WATER CURTAINS</b>        | 26-27 |
| <b>10</b> | <b>SPA FITTINGS</b>          | 28-29 |
| <b>11</b> | <b>OTHERS</b>                | 30-31 |

# FILTERS



## Product Description

*Motor: Single phase version built-in-thermal protection, Asynchronous, two poles, Continuous operation, IP 55 protection*



| Sr. No | Model  | Filter Area (m2) | Vavle Connection |      | Max Flow Rate      | Gravel (Kg) | A mm | B mm |
|--------|--------|------------------|------------------|------|--------------------|-------------|------|------|
| 1      | PD400  | 0.13             | 1.5 Inch         | 50mm | 8 Metric Cube / h  | 35          | 720  | 400  |
| 2      | PD450  | 0.16             | 1.5 Inch         | 50mm | 10 Metric Cube / h | 45          | 770  | 450  |
| 3      | PD525  | 0.22             | 1.5 Inch         | 50mm | 12 Metric Cube / h | 85          | 840  | 525  |
| 4      | PD625  | 0.3              | 1.5 Inch         | 50mm | 16 Metric Cube / h | 150         | 960  | 625  |
| 5      | PD700  | 0.40             | 1.5 Inch         | 50mm | 20 Metric Cube / h | 210         | 1040 | 700  |
| 6      | PD750  | 0.45             | 2.0 Inch         | 63mm | 23 Metric Cube / h | 300         | 1100 | 750  |
| 7      | PD800  | 0.50             | 2.0 Inch         | 63mm | 25 Metric Cube / h | 355         | 1210 | 800  |
| 8      | PD900  | 0.64             | 2.0 Inch         | 63mm | 31 Metric Cube / h | 470         | 1270 | 900  |
| 9      | PD1000 | 0.79             | 2.0 Inch         | 63mm | 36 Metric Cube / h | 620         | 1360 | 1000 |
| 10     | PD1000 | 0.96             | 2.0 Inch         | 63mm | 42 Metric Cube / h | 800         | 1400 | 1100 |
| 11     | PD1200 | 1.13             | 2.0 Inch         | 63mm | 45 Metric Cube / h | 900         | 1420 | 1200 |



# FILTERS



## Product Description

### FILTER & PUMP COMBO

*Motor: Single phase version built-in-thermal protection, Asynchronous, two poles, Continuous operation, IP 55 protection*



| MODEL     | SAND FILTER | WATER PUMP | MAX FLOW RATE |
|-----------|-------------|------------|---------------|
| PSF400-6W | Φ16" P400   | STP50      | :6.48M3/h     |
| PSF450-6W | Φ18" P450   | STP75      | 8.10M3/h      |
| PSF525-6W | Φ21" P525   | STP100     | 11.1M3/h      |
| PSF625-6W | Φ25" P625   | STP120     | 15.6m3/h      |

### TOP MOUNT VALVE

*Motor: Single phase version built-in-thermal protection, Asynchronous, two poles, Continuous operation, IP 55 protection*



|        |                                      |
|--------|--------------------------------------|
| PV01-1 | top mounted 1.5" six functions valve |
| PV02-2 | top mounted 2" six functions valve   |

# FILTERS



## Product Description

Wall mounted filter are designed keeping small pools/ Residential pools installed where limitation to pump room space. Made of high quality acrylic with fiberglass reinforced.. Equipment to comply with the filter bag, massage jet, suction and lighting. Massage jet delivery design ensures more Air Mixture in to pool. Comes with 12/18w warm white LED light. New feature as outside vacuum fitting for easy access and cleaning

| REF.CODE                 | 8020 (15m3/h) | 8025 (25m3/h) |
|--------------------------|---------------|---------------|
| MOTOR POWER              | 1.5hp x1 pump | 2hp x1 pump   |
| MATERIAL                 | Acrylic shell | Acrylic shell |
| TRANSFORMER              | 1 pcs         | 1 pcs         |
| UNDERWATER S.S LED LIGHT | 1 pcs         | 1 pcs         |
| SKIMMING BASKET          | 1 pcs         | 1 pcs         |
| CHLORINE FEEDER          | 1 pcs         | 1 pcs         |
| FLOW RATE                | 15m3/h        | 25m3/h        |
| SIZE                     | 1110*670*780  | 1120*690*1100 |
| ABS BIG JET              | 1 pcs         | 1 pcs         |
| STAINLESS STEEL RAIL     | 2 pcs         | 2 pcs         |



# AF SERIES CARTRIDGE FILTERS



## Product Description

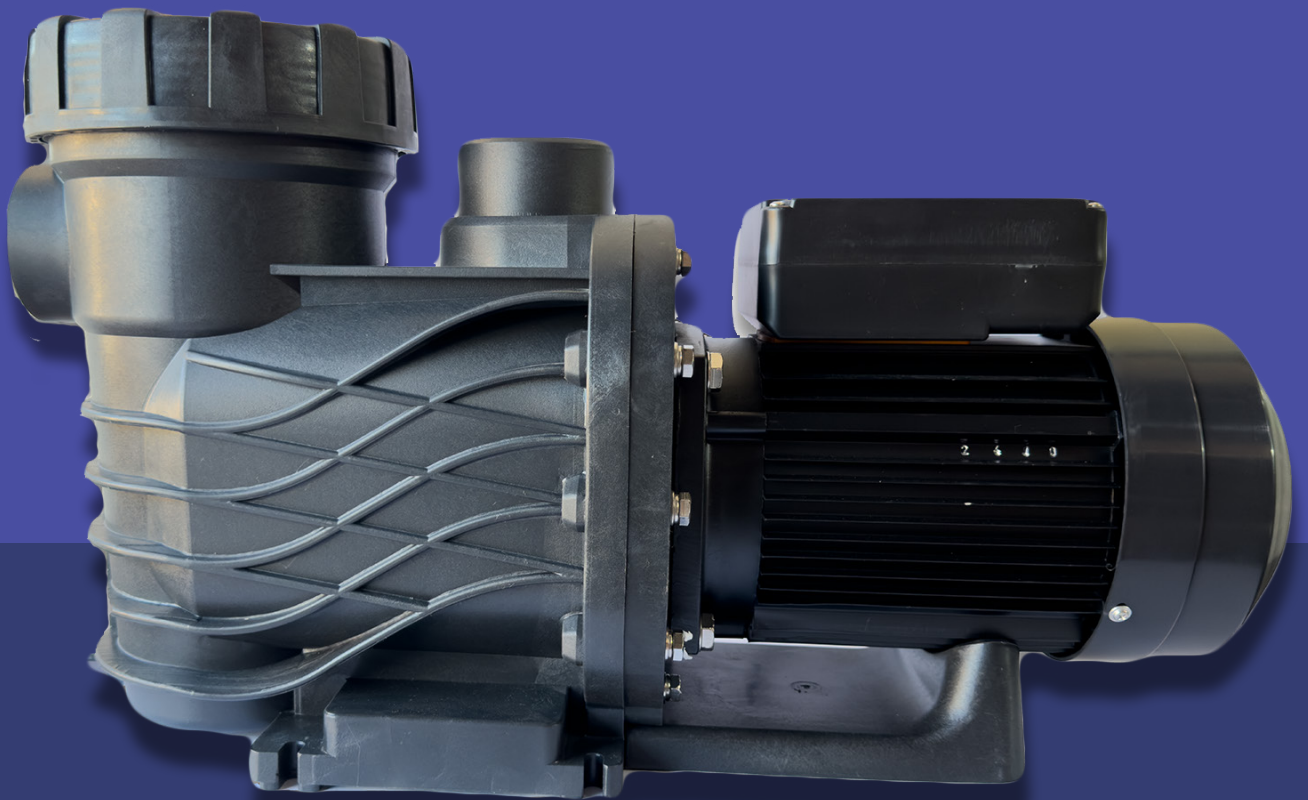
Lorem ipsum dolor sit amet, consectetur adipiscing elit, sed do eiusmod tempor incididunt ut labore et dolore magna aliqua. Ut enim ad minim veniam, quis nostrud exercitation ullamco laboris nisi ut aliquip ex ea commodo consequat. Duis aute irure dolor in reprehenderit in voluptate velit esse cillum dolore eu fugiat nulla pariatur. Excepteur sint occaecat



| MODEL     | SAND FILTER | WATER PUMP | MAX FLOW RATE |
|-----------|-------------|------------|---------------|
| PSF400-6W | Φ16" P400   | STP50      | :6.48M3/h     |
| PSF450-6W | Φ18" P450   | STP75      | 8.10M3/h      |
| PSF525-6W | Φ21" P525   | STP100     | 11.1M3/h      |
| PSF625-6W | Φ25" P625   | STP120     | 15.6m3/h      |
| PSF525-6W | Φ21" P525   | STP100     | 11.1M3/h      |
| PSF625-6W | Φ25" P625   | STP120     | 15.6m3/h      |

# PUMPS

Swimming Pool Pump With Strainer Basket





## Product Description

*Materials: Pump body, pump foot and diffuser In glass loaded polypropylene. Motor housing in aluminium L-2521, shaft available in Stainless Steel AISI 420 Impeller and seal mounting in PPO.*

*Motor: Single phase version built-in-thermal protection, Asynchronous, two poles, Continuous operation, IP 55 protection*



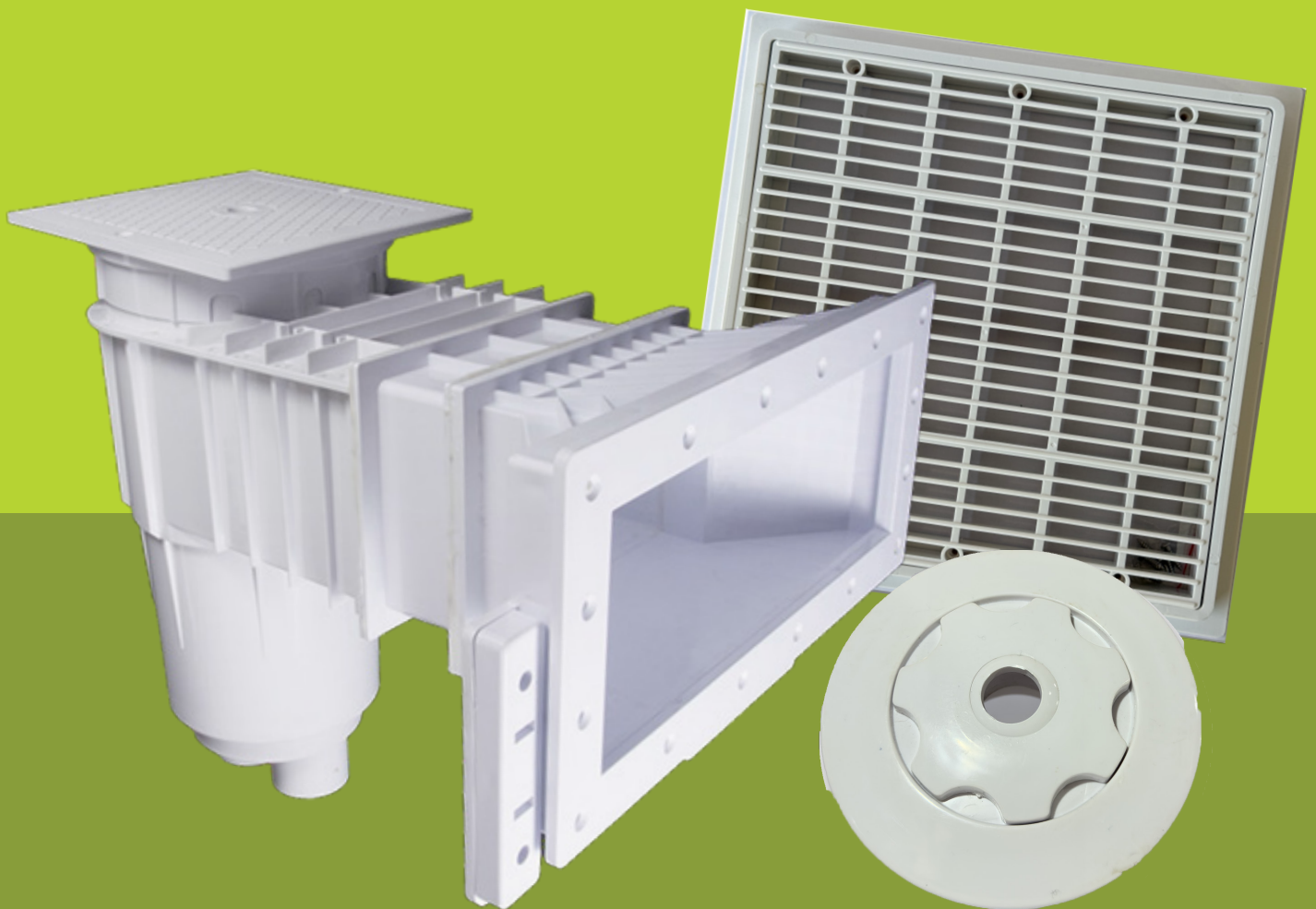
| MODEL      | FLOW RATE             | PHASE        | FREQUENCY | MAXIMUM FLOW RATE | MATERIAL                                    | PRODUCT DIMENSION   | PRODUCT WEIGHT |
|------------|-----------------------|--------------|-----------|-------------------|---|---------------------|----------------|
| NEW PD-050 | 15.9m <sup>3</sup> /h | Single Phase | 50HZ      | 200 L/Min         | IRON  | 62 X 27.5 X 37.5 CM | 10800 Grams    |
| NEW PD-075 | 17.4m <sup>3</sup> /h | Single Phase | 50HZ      | 250 L/Min         | Stainless Steel, Polypropylene, AluminiumON | 62 X 27.5 X 37.5 CM | 11750 Grams    |
| NEW PD-100 | 33m <sup>3</sup> /h   | Single Phase | 50HZ      | 300 L/Min         | Polypropylene, AluminiumON                  | 30.5 x 66 x 43.2 CM | 21500 Grams    |
| NEW PD-150 | 33m <sup>3</sup> /h   | Single Phase | 50HZ      | 370 L/Min         | Polypropylene, AluminiumON                  | 66 x 30.5 x 43.2 CM | 21500 Grams    |
| NEW PD-200 | —                     | —            | —         | 430 L/Min         | Stainless Steel, Polypropylene, AluminiumON | 73.7 x 33 x 43.2 CM | —              |
| NEW PD-300 | —                     | —            | —         | 490 L/Min         | —   | —                   | —              |

## Colour

Black



# POOL BASIN FITTING



## Product Description

### SKIMMER

*Standard Swimming Pool Wall Skimmer is designed and manufactured using quality tested material and is in compliance with international quality standards.*

*These are applicable in swimming pools to enhance the flow speed of the pool water at the same time as surface particles are gathered in the skimmer's strainer basket. Swimming pool standard skimmer is high on strength and durability and its large capacity filter bucket helps in easy removal of accumulated debris.*



| MODEL   | COLOUR | MATERIAL | PRODUCT WEIGHT | PRODUCT DIMENSIONS |
|---------|--------|----------|----------------|--------------------|
| SP0030C | WHITE  | ABS-UV   | 3.5 KG         | 5X12X7 INCH        |
| SP0040C | WHITE  | ABS-UV   | 5 KG           | 10X8X7 INCH        |



## **Main Drain – For Commercial Pools**

Main drains, to recirculate the water at the bottom of the pool. Located in the deepest part of the pool, the drains collect water from the bottom so it can be filtered or fully drained from the pool.



## **Main Drain – For Residential Pools**

A pool's so-called main drain is not actually a drain; that is, it is not used to drain the pool. Instead, it is an outlet, housing a pipe that runs to the pump, which sucks water through a skimmer, then through a filter, then through a heater (if you have one), & then back to the pool via multiple inlets.



## **Wall Inlets**

Wall inlet is available in ABS.

Direction of flow into pool is easily controlled by adjusting the "Eyeball" which features a safety grille to prevent children's prying fingers. BY adjusting the direction of flow, heating & chemical dispersion is made easier. Recommended flow 5m/h



## **Floor Inlets**

Adjustable floor inlet allows easy control of flow into the pool by adjusting the screw available. Recommended flow 12 m/h



## **Vacuum Point**

Vacuum Point is installed where an automatic pool cleaner or vacuum hose is to be fitted. These fittings are supplied with removable plug.



## **Overflow Gratings**

made of special, high density polyethylene & treated for resistance to ultraviolet light, Certikin Channel Grating is suitable for use even in the hardest climates.

# MAINTENANCE EQUIPMENT





## Product Description



18" Deluxe  
Polybristles curved  
Brush with Alu Back



18" Deluxe  
Polybristles curved  
Brush



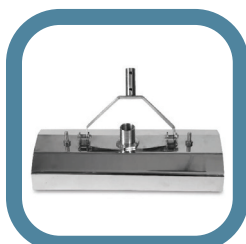
18" Algae Brush with  
Alu Back and SS  
Bristles.



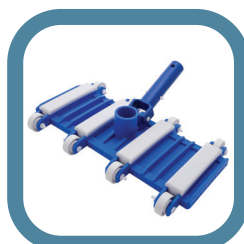
10" Algae Brush  
with  
SS Bristles



Suction or Vacuum  
Head  
Size: 14" & 18"



SS304 Grade Vacuum  
Head with standard  
handle. Size 14" & 18"



Flexible Vacuum  
Head  
with 8 Wheels



Flexible Vacuum Head  
with 8 Wheels & Side  
Brush



Butterfly Vacuum  
Suction Head with  
Bumper.



Deluxe triangular  
transparent vacuum  
head



Deep Net/  
Leaf Rack



Eva Spiral Hose Pipe  
Available in  
9/12/15/30 mtrs.



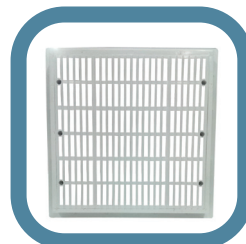
PVC Hose Pipe  
Molded Available in  
9/15/30 mtrs.



Pool Test Kit



Telescopic Pole,  
available in  
8ft - 16ft,  
8ft - 16ft - 23ft



Drain Cover  
Available in  
Square and Round

## Product Description



### **TCCA-SO**

*Acts as a powerful disinfectant, controlling bacteria and algae.*



### **COPPER SULPHATE**

*Used in swimming pools to control algae growth and purify the water*



### **BLEACH**

*Kills harmful bacteria, viruses, and algae. This disinfection process keeps the water safe from pathogens that could cause illness.*



### **SODA**

*Raises the pool water's pH when it becomes too acidic.*



### **ALUM**

*Clears cloudy water by binding small particles.*



### **SETTLER**

*Used to flocculate and remove fine particles and debris from pool water.*

# LED LIGHT



## Product Description



### **SS Body**

*Available in CW, WW, RGB*



### **ABS SMD Body**

*Available in CW, WW, RGB*



### **ABS Silk Body**

*Available in CW, WW, RGB*



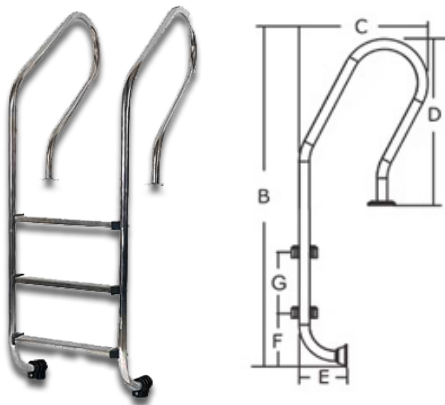
# POOL STEP LADDERS



## Product Description

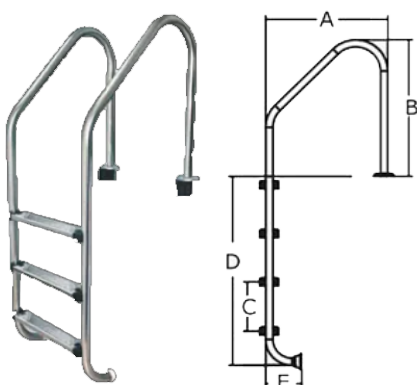
- 1) This product has straight forward illustrations and descriptions. Every screw and pin has its own code and it's easy to understand the assemble progress. It won't take you much time and could save your energy.
- 2) Thoughtful non-slip footstep which could protect your safety while you wanted to start your swimming or finished your swimming. And it could give you more stability.
- 3) High quality iron wire connecting procedure which could make this cage more durable and solid. And the structure follows the scientific principle and is strong enough to hold cats to play.

### Skimmer Ladder



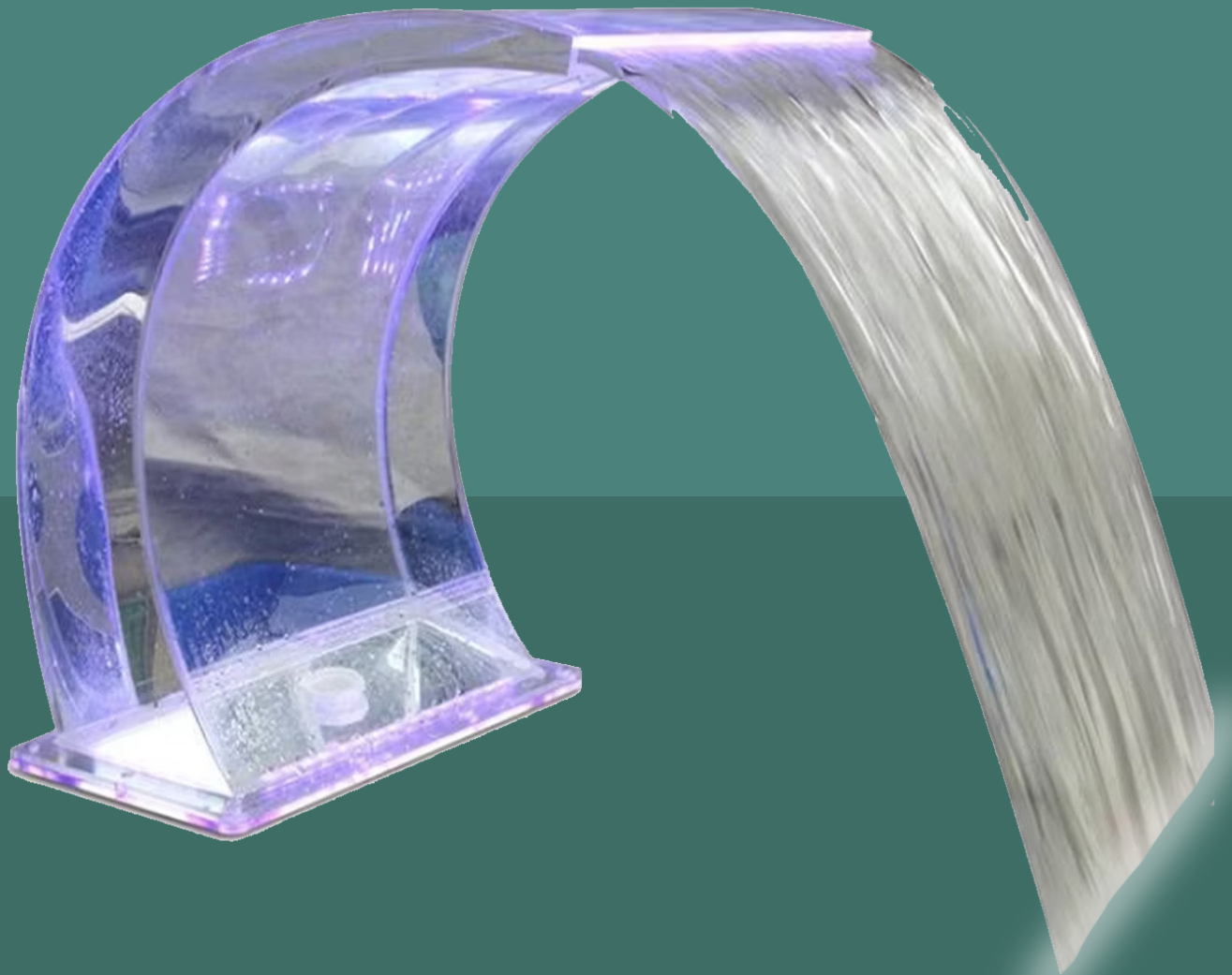
| MODEL  | A mm | B mm | C mm | D mm | E mm | F mm |
|--------|------|------|------|------|------|------|
| SF-215 | 530  | 600  | 280  | 650  | 185  | 500  |
| SF-315 | 530  | 600  | 280  | 930  | 185  | 500  |
| SF-415 | 530  | 600  | 280  | 1210 | 185  | 500  |
| SF-515 | 530  | 600  | 280  | 1490 | 185  | 500  |

### Overflow Ladder

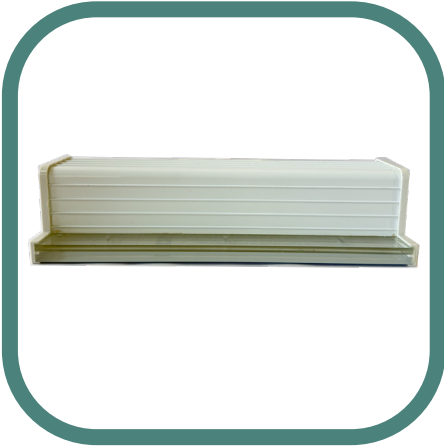


| MODEL  | A mm | B mm | C mm | D mm | E mm | F mm |
|--------|------|------|------|------|------|------|
| SL-215 | 635  | 700  | 280  | 650  | 185  | 500  |
| SL-315 | 635  | 700  | 280  | 930  | 185  | 500  |
| SL-415 | 635  | 700  | 280  | 1210 | 185  | 500  |
| SL-515 | 635  | 700  | 280  | 1490 | 185  | 500  |

# Water Curtains



## Product Description



**Acrylic Water Curtain**  
*Available in 1/2/3/4 Feet*



**SS Water Curtain**  
*Available in 1/2/3/4 Feet*



**SS Cobra Water Curtain**  
*Available in 1/2/3/4 Feet*

# Spa fitting



## Product Description



### Jaquzzi Nozzle

- These high performance spa jets shall allow clients to have complete control of pressure & direction. Jets turn on/off by rotating the nozzle or jet face. Jets can be easily removed from inside the tub for servicing or cleaning.
- Flow 4.5 cu mtr/hr@ 0.8 BAR
- Connection size of 50 x 50 mm available



### Air Bubbler Nozzle

- Bubbler nozzle allows air into pool with air pipe network
- Comes with tube/ solvent/ threaded connections so that it is easy to connect with pipe network
- Top portion is adjustable enabling quantity of air movement into pool



### Air Controller

- Air controller capable of allowing air into the pipe network with the venturi arrangement available in jacuzzi nozzles. Comes with solvent / threaded connections so that it is easy to connect with pipe work
- Top portion is adjustable enabling quantity of air movement into pipe network



### Bush Button

- These air buttons push air to your controller to operate the blower.
- Air buttons are located at spa-side Gare used to control the air switches which are connected to your spa equipment.
- It comes with solvent connection.
- 3-4 mm Air tube connection



## CONTACT:

[www.pooldoctor.in](http://www.pooldoctor.in)

☎ 9029509829

☎ 9082033733



K4-K5, Madhusudan Compound, Lodha Upper Thane, Mankoli Pin Code: 421302.