

APS



We Are Manufacture and Supplier of Bridge Bearing, Expansion Joint & Steel Bridge

APS Infra Projects

We Support, Certified & Awarded with

GST No: 09ABXFA8720F1Z0



About Our Company



In order to carry out contract development projects, Mr. Pravej Ali founded a business called APS Infra Projects in 2019. Our organization has bought several equipment for smooth operations. Strong team, a commitment to sustaining the highest quality standards attainable in the construction sector, and integrity have been the fundamental drivers of success. Ours was initially a partnership manufacturer and supplier firm which was later changed into a private limited company to sustain the expansion. Eventually, Mr. Bilal Khan and Ms. Farhana Khan became directors. Currently, our company is engaged in offering Steel Bridge, Expansion Joint, Over Bridge Bearing Pad, Drainage Spout, Elastomeric Bearing and Spherical Bearing, etc.

Quality, integrity, and honesty set us apart from other commercial road building firms. We are conscious of the importance of every single Road/Highways project, from small tenement restorations to massive multi-Crores projects. Every customer gets the specialized attention they require for their particular project.

Our Strength

Our vision is to be counted among the most esteemed and renowned businesses in infrastructure and civil construction. Further, we are working with the mission of become a market leader in infrastructure development, dedicated to provide top-notch services to create cutting-edge markets and boost value for our stakeholders.

Our Aim

Our aim is to increase customer satisfaction by offering superior products like Over Bridge Bearing Pad, Stainless Steel Bridge Expansion Joint, Elastomeric Rubber Bridge Bearing, Water Drainage Spout, etc. Further, we aim to complete the projects with in a stipulated time frame. Our venture is also focused to reduce cost of our offerings and be a leader in the field of civil construction.





Our Vision, Mission Values

Our vision is to be counted among the most esteemed and renowned businesses in infrastructure and civil construction. Further, we are working with the mission of become a market leader in infrastructure development, dedicated to provide top-notch services to create cutting-edge markets and boost value for our stakeholders.

Our Environmental Policies, Potential and Skills

At APS Infra Projects, we constantly give environmental preservation our top priority and consider it when appraising projects. We promise to follow ecologically sound construction techniques, using alternative energy sources to the greatest extent practical. Apart from this, we put forth all possible effort to preserve and improve crustal vegetation.

We are a well-known business in the Uttar Pradesh, Uttarakhand, Bihar, Himachal Pradesh, Assam, West-Banagal, Rajasthan, Arunchal Pradesh, J&k and Haryana road construction sectors. Our specialties lies in catering to the demands of buyers associated with Elastomeric Bridge Bearing, Steel Truss Bridge, Pot PTFE bearing and Expansion Joint, etc.

In order to benefit from the advantages of engineering know-how and technical skill across all phases of project management, from conception to completion, we establish tight relationships with our clients.

Products & Services

- Bridge Bearings
- Steel Bridge
- Strip Seal Expansion Joints
- Drainage Spout
- Modular Expansion Joints
- Spherical Bearing
- Pot PTFE Bearing
- Rehabilitation of Old Bridge
- Foot over Bridge
- Rocker & Roller Bearing
- Elastomeric Bearing
- Bridge Construction Service
- Steel Truss Bridge
- Steel Composite Girder Bridge
- Steel Arch Bridge

MOST POPULAR PRODUCTS

Pot PTFE bearing

To fulfil ever-evolving requirements of our respected customers, we are involved in offering Over Bridge Bearing Pad. Over Bridge Bearing Pad consists of layers of elastomeric material that are bonded together and reinforced with steel plates or other materials to provide additional strength and durability. Our offered bearing pad provides a stable and flexible connection between the overpass deck and its supporting structure.



Elastomeric Bridge Bearing

This roller bearing is used in civil engineering and infrastructure projects such as bridges, buildings, and dams. It is designed to allow for movement and rotation between two structural elements while providing support and stability. This roller bearing is generally composed of two main parts: a flat plate, or rocker, that rests on the support structure, and a curved plate, or roller, that is attached to the supported structure. Moreover, this roller bearing has the ability to support heavy loads while allowing for movement and rotation between two structural elements.



Strip Seal Expansion Joint

The watertight clamp mechanism without screwing or lose clamp strips which lasts for decades is the great strength of the MAURER Strip Profile-Expansion Joints. This kind of construction enables a simple change of sealing profiles without destruction. A gap-reducing cap profile for pavements is available from APS

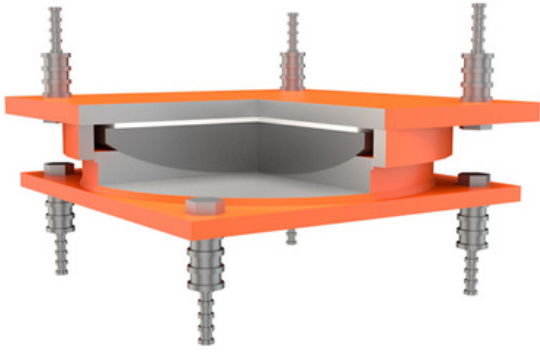


Steel Girder Bridge

With the inclusion of advanced techniques, we are engaged in offering Steel Girder Bridge. This bridge uses steel girders to support the weight of the bridge deck and any load that it carries. Steel Girder Bridge finds usage in highway and railway construction due to their strength, durability, and relatively low cost compared to other types of bridge construction. This is I-shaped and is fabricated from steel plates or beams. They are usually placed parallel to each other and spaced apart to form the bridge span.



Others Product and Services



Pot PTFE Bearing



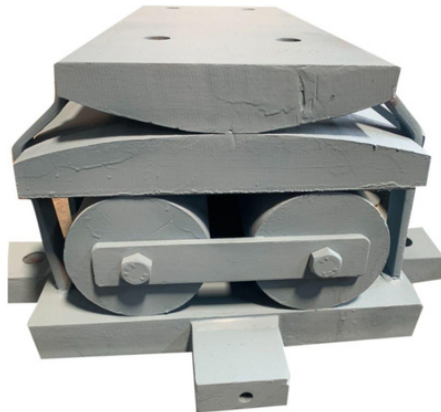
Steel Bridge



Drainage Spout



Modular Expansion Joint



Rocker & Roller bearing



Lifting of RCC Bridge



Foot over Bridge

Others Product and Services



Steel Gider Bridge



W been Greage barrier



Cable Stay Brige



Strip Seal Expansion Joint



Old RCC Bridge Repaired by Epoxy Mortar & Injection Grouting



Steel Truss Bridge



Plate Girder Bridge



Deck Type Truss bridge

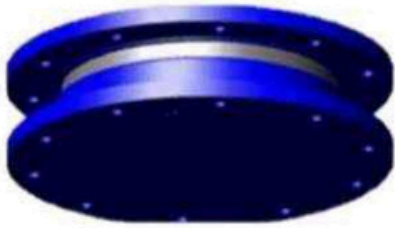


Steel Truss Bridge

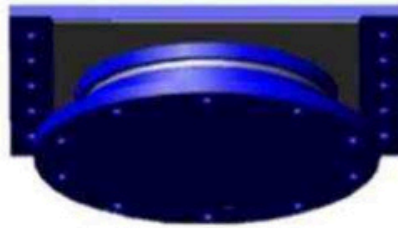
Bridge Bearing

A device between the structure and superstructure to control the infection of these to called Bearing. The function of a bearing is to safely transmit the Loads and Forces acting on to or from the Superstructure to the substructure underneath while providing for free translation and rotation of the structure supported by the bearing

1. **POT – PTFE BEARINGS:** There are following types of POT Bearing used in Bridge:



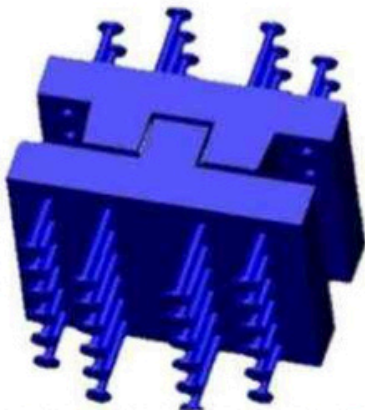
FIXED POT BEARING



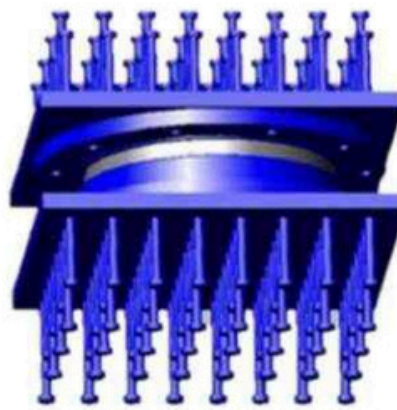
FREE POT BEARING



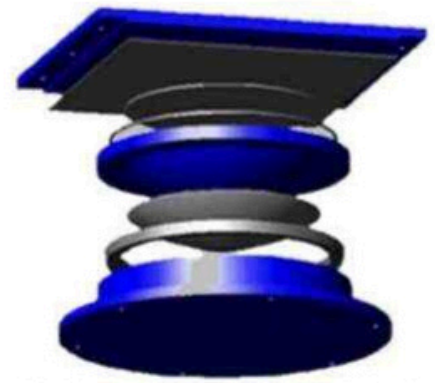
GUIDED POT BEARING



METALLIC GUIDE BEARING



PINNED POT BEARING



FREE FLOAT POT BEARING

2. **ROCKER – ROLLER BEARINGS:** These Bearings are Commonly used in Railway / Steel Girder Bridges.



3. **ELASTOMERIC NEOPRENE BEARINGS:** These Bearings are used in RCC Bridges / Metro Bridges.



Expansion Joint is the device used to bridge the Gap provided in between the Structural Elements that could either be the two adjacent deck segments or in between the Abutment and the first deck Slab of the Bridge Structure. There are following types of Expansion Joints used in Bridges.

1. STRIP SEAL TYPE EXPANSION JOINTS (Cater for a movement upto 80 mm)



APS F-TYPE EJ

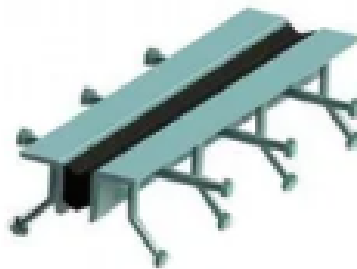


APS K-TYPE EJ

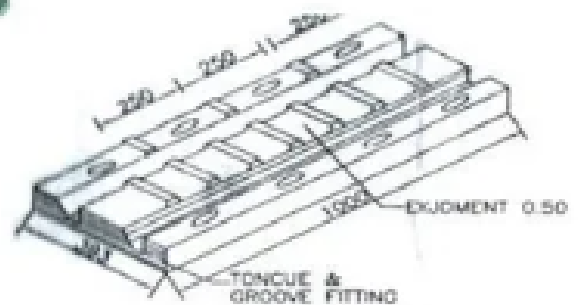


APS M-TYPE EJ

2. COMPRESSION SEAL JOINT

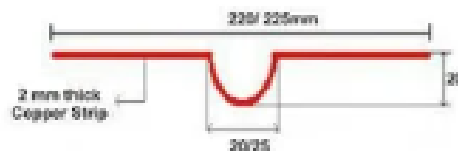
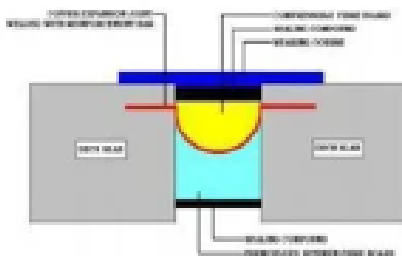


3. SLAB SEAL JOINT

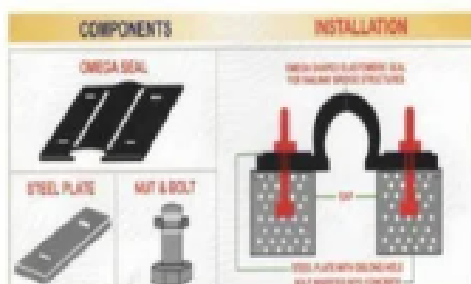


ELASTOMERIC SLAB SEAL EXPANSION JOINTS

4. COPPER PLATE JOINT



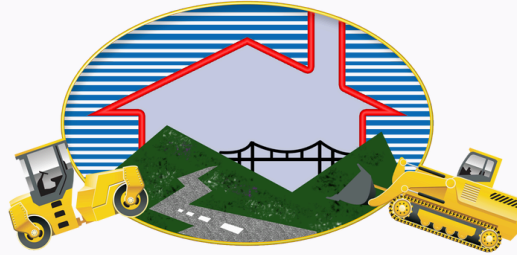
5. OMEGA TYPE EXPANSION JOINT



Our Clients



PWD



JSP PROJECTS PVT. LTD.



THE WORLD BANK



Our Happy Customers



MR. BIJENDRA SINGH

Execution and supervision of Bridge construction works - piling, pile-foundations, open foundations, Abutments, piers, bearing installation-grouting, post tensioning ,painting for structures and Execution of culverts of type box ,pipe and slab culverts as per client specifications



MR. ANIL GUPTA

I have got a good work experience here and every need to get an achievement. My all elders are very active and associate to me. All of us work .F



MR. MD GAZZI

Bridge and roof roof is mechanical construction company, Tanking contacting works from India govt companies.I work as a site engineer.here i found structure job.it is very good company .and it's culture is very nice .it control structure tank etc .





MORE ABOUT US



Phone

Mr. Parvej Ali
+91 99178 13676



Website

www.apsinfraprojects.in
www.apsinfraprojects.co.in



Email

apsinfraprojects22@gmail.com



Office Address

Unit-1: Khasra No. 188, Sibli Industrial Area, Muradnagar, Ghaziabad (UP) Pin- 201206

Unit-2: Khasra No. 392, Village- Achronda, Partapur, Meerut (UP) Pin - 250103

H.No. 136,,Nagala Musa,Nagala Musa Patla, Modinagar - 201204, Ghaziabad, Uttar Pradesh, India