



Company introduction

SAKARIYA INDUSTRIES



www.sakariyaindustries.in

J TYPES FOUNDATION BOLT

we are make J type foundation bolt diameter 12 mm to 32 mm
12 mm J bolt widely used in solar roof top foundation ,most heavy
load PEB or structure and now a day metro and bullet train and
metro rail project with HDG for stable structure
length of foundation bolt is as per client requirment and IS
standard for structure

Features of J-Type Foundation Bolts:

Shape: The bent "J" hook ensures a strong grip when the concrete sets around the bolt.

Materials: Typically made from steel and can be galvanized for corrosion resistance.

Sizes: Available in various diameters and lengths depending on the load and application.

Uses: Common in construction for securing structures to concrete or securing heavy machinery.



SAKARIYA
INDUSTRIES



L types FOUNDATION BOLT

L type foundation bolt are used in heavy structure like PEB building, industrial shed and light pole foundation normally used 4.6 grade in local market and as per load structure 5.8 grade, 8.8 grade and 10.9 grade we are made foundation bolt 12mm to 32 mm , Total length of foundation bolt and thread length 75 to 200 mm as per client requirement

Features of L-Type Foundation Bolts:

Shape: The bent "L" hook ensures a strong grip when the concrete sets around the bolt.

Materials: Typically made from steel and can be galvanized for corrosion resistance.

Sizes: Available in various diameters and lengths depending on the load and application.

Uses: Common in construction for securing structures to concrete or securing heavy machinery.

**SAKARIYA
INDUSTRIES**

EYE TYPES FOUNDATION BOLT



Eye type foundation bolt are used in heavy structure like PEB building, industrial shed and light pole foundation normally used 4.6 grade in local market and as per load structure 5.8 grade, 8.8 grade and 10.9 grade we are made foundation bolt 12mm to 32 mm , Total length of foundation bolt and thread length 75 to 200 mm as per client requirement

Features of EYE -Type Foundation Bolts:

Shape: The bent "EYE " hook ensures a strong grip when the concrete sets around the bolt.

Materials: Typically made from steel and can be galvanized for corrosion resistance.

Sizes: Available in various diameters and lengths depending on the load and application.

Uses: Common in construction for securing structures to concrete or securing heavy machinery.



SAKARIYA
INDUSTRIES

PLATE- TYPES FOUNDATION BOLT

Plate type foundation bolt are used in heavy structure like PEB building, industrial shed and light pole foundation normally used 4.6 grade in local market and as per load structure 5.8 grade, 8.8 grade and 10.9 grade we are made foundation bolt 12mm to 32 mm , Total length of foundation bolt and thread length 75 to 200 mm as per client requirement

Features of Plate-Type Foundation Bolts:

Shape: The bent " Plate" hook ensures a strong grip when the concrete sets around the bolt.

Materials: Typically made from steel and can be galvanized for corrosion resistance.

Sizes: Available in various diameters and lengths depending on the load and application.

Uses: Common in construction for securing structures to concrete or securing heavy machinery.



SAKARIYA
INDUSTRIES

HDG FOUNDATION BOLT

Hot dip foundation is made by mild steel 4.6 grade, 5.6 grade and other higher strength grade than make hot dip galvanizing process with 400 or more than degree temp As per IS : 2629 & IS 4759 do zinc coating for corrosion resist material widely this material used in costal area, chemical plant and water logged area such material is used



**SAKARIYA
INDUSTRIES**

SAG ROD

A PEB SAG Rod (Pre-Engineered Building Sag Rod) is an integral component used in pre-engineered buildings (PEBs) to provide structural stability and prevent lateral deflection in purlins. These rods are designed to reduce sagging or bending under loads, ensuring that the structure remains durable and capable of bearing weight evenly.

Key Features of a PEB Sag Rod:

Material: Typically made of high-tensile steel or other robust metals for durability and strength.

Shape: A long, slender rod that connects purlins or structural members in roofing systems.

Corrosion Resistance: Often coated or galvanized to prevent rusting, especially in harsh weather conditions.

Threaded Ends: These rods typically have threaded ends that allow for easy attachment to other structural components via nuts and bolts.

Function:

Support: Helps prevent purlins or girts from sagging due to load or gravity, ensuring structural integrity.

Load Distribution: Distributes lateral loads and reduces stress on individual components, maintaining the overall stability of the roof structure.

Tension Member: Acts as a tension member between two structural points, maintaining the designed shape and strength of the building.

Applications:

Pre-Engineered Buildings: Used primarily in the roofing systems of PEBs for warehouses, industrial sheds, and large-span buildings.

Roof Purlins: Commonly installed between roof purlins to hold them in place and ensure uniform load distribution.



SAKARIYA
INDUSTRIES

BRACE ROD

Brace rod bracing mainly used for cross support to vertical and horizontal elements of PEB and stability against wind and other load on structure
Sag rod having length as per client required like 1mtr to 10 mtr or more its total costmised item

Category: Steel Building Components

Material: High Tensile Steel / Mild Steel (MS)

Surface Treatment: Hot-Dip Galvanized / Painted

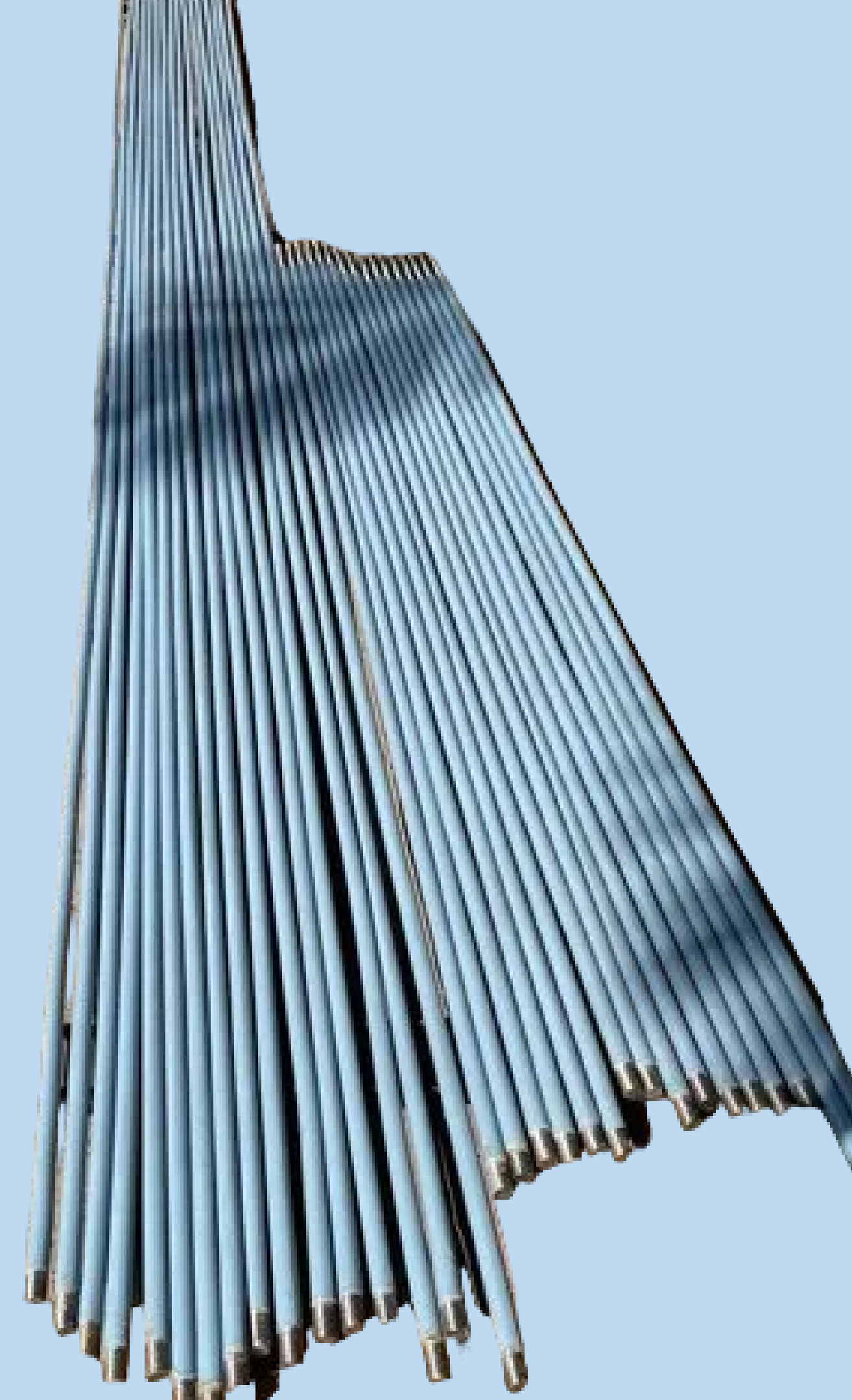
Diameter Range: 12mm to 25mm (customizable)

Length: As per project requirements

Standards: ASTM A36, IS 2062, or equivalent standards



SAKARIYA
INDUSTRIES





SAKARIYA INDUSTRIES

FLANGE BRACE ANGLE

In Pre-Engineered Building (PEB) structures, the Flange Brace Angle plays a vital role in stabilizing and supporting the steel members, especially in the rafter and column sections. These flange braces ensure the proper alignment of flanges and prevent lateral buckling or bending of beams and rafters under load. They connect the flanges to secondary members like purlins and girts, providing lateral restraint to the flanges of structural members.

Product Description:

Product Name: Flange Brace Angle

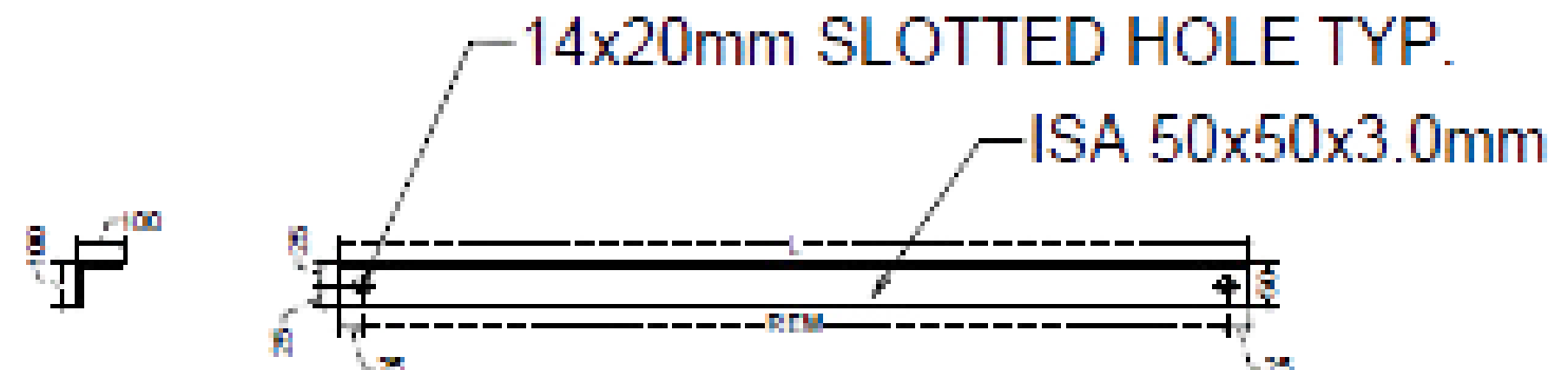
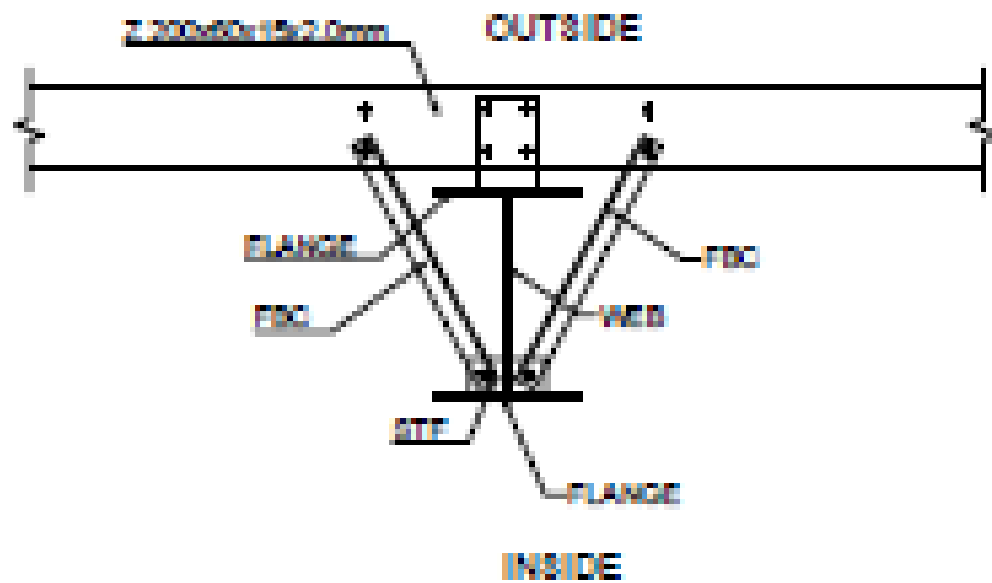
Category: Steel Structural Components

Material: Mild Steel (MS) or High-Tensile Steel

Surface Treatment: Hot-Dip Galvanized / Painted

Thickness Range: 3mm to 10mm (or customized)

Angle Dimensions: As per design requirements (commonly L-shaped sec



MS CLEAT

MS Cleat (Mild Steel Cleat) is a structural component used in Pre-Engineered Building (PEB) systems. These cleats are critical for making strong connections between primary and secondary structural members, such as rafters, columns, beams, purlins, and girts. MS Cleats are typically L-shaped steel plates that are used to bolt or weld two members together, ensuring rigidity and stability in the structure.

Product Name: MS Cleat (Mild Steel Cleat) for PEB Structures

Category: Steel Connection Components

Material: Mild Steel (MS)

Surface Treatment: Hot-Dip Galvanized / Painted

Thickness Range: 5mm to 12mm (or customized)

Standard: Conforms to IS 2062, ASTM A36 or equivalent standards

Type: L-shaped / T-shaped / Custom Shapes

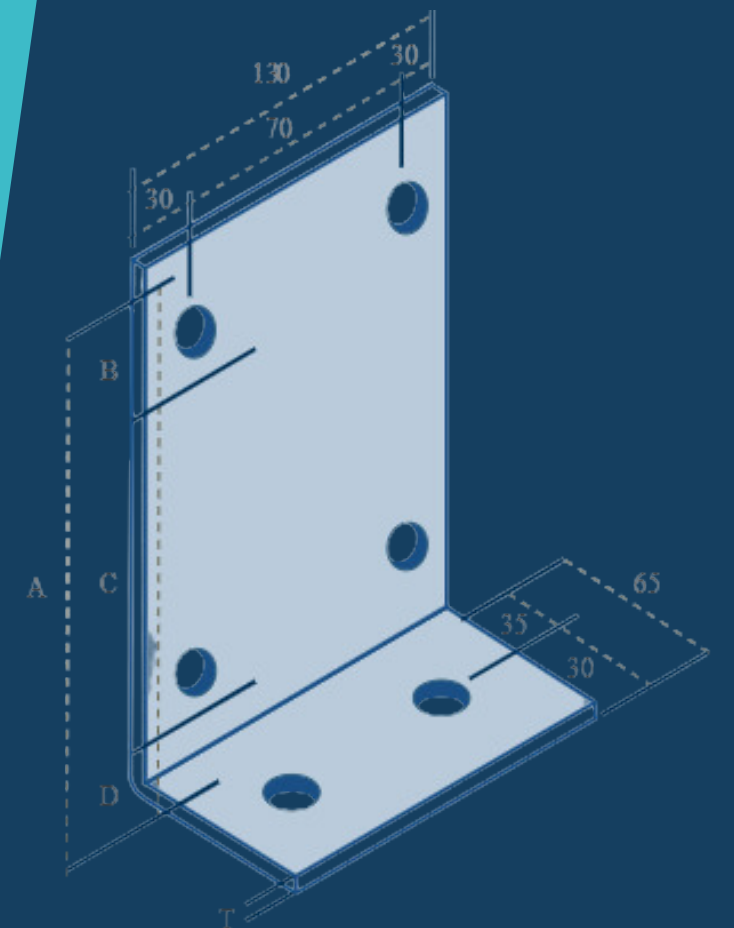
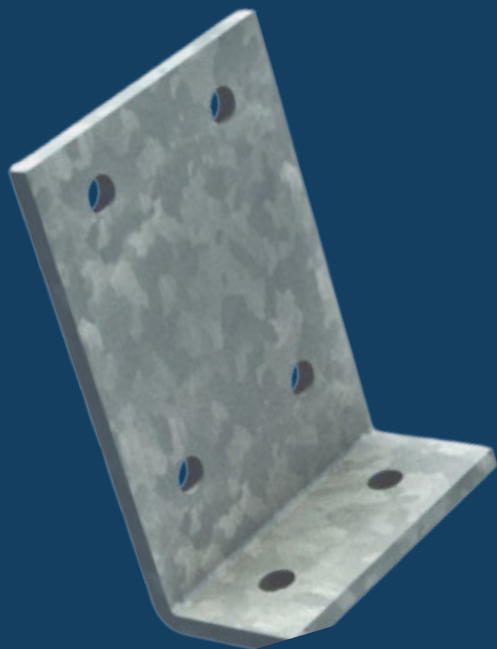
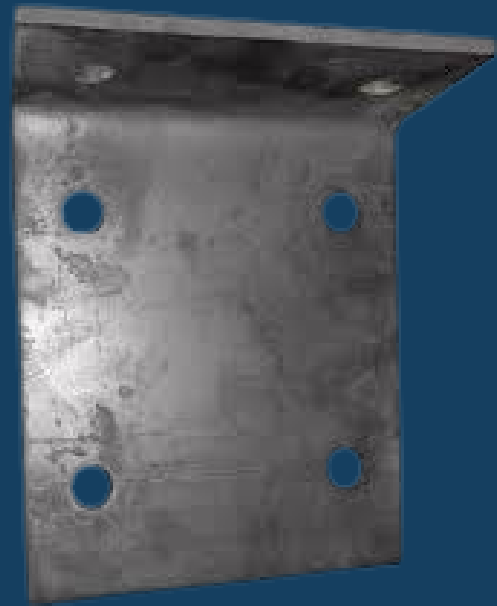
Applications:

Purlin and Girt Connections: MS cleats are used to attach purlins and girts to the main frame (rafters and columns).

Beam and Rafter Connections: Essential in forming the connections between secondary beams or braces with the primary members.

Wall and Roof Structures: Used in both vertical (walls) and horizontal (roof) sections of PEB buildings to provide secure and stable connections.

Bracing Systems: Often used in conjunction with bracing rods or angles to further strengthen the structural stability of the building.



SAKARIYA INDUSTRIES



SAKARIYA INDUSTRIES

Contact Us

We are always ready to assist you with your queries, feedback, or project needs. Feel free to get in touch with our team through the following channels:



6354446737



www.sakariyaindustries.in



sakariyaindustries.surat@gmail.com

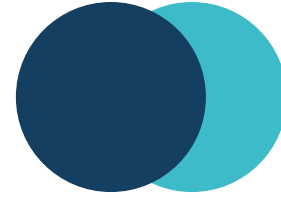


SURAT (GUJRAT)





SAKARIYA
INDUSTRIES



THANK YOU FOR YOUR ATTENTION

Lorem ipsum dolor sit amet, consectetur adipiscing elit. Maecenas pharetra, urna vel laoreet tempus, elit erat accumsan urna, ac ultrices magna est non risus.



www.sakariyaindustries.in