

The logo for RC VENTURES. 'RC' is in red, bold, sans-serif font. 'VENTURES' is in blue, bold, sans-serif font, enclosed in a blue rounded rectangular border. A registered trademark symbol (®) is to the right of the word 'VENTURES'.

RC VENTURES®

ISO 9001 : 2015 Company

**MATERIAL
HANDLING
AND
WASTE
MANAGEMENT
TOOLS**

Industrial Crates

300 X 200 SERIES



300 X 200 X 065 mm OD
300 X 200 X 100 mm OD
300 X 200 X 150 mm OD
300 X 200 X 200 mm OD



CRATE LIDS



LIDS with Locking Clips
available for all Industrial crate Sizes

400 X 300 SERIES



400 X 300 X 065 mm OD
400 X 300 X 080 mm OD
400 X 300 X 090 mm OD
400 X 300 X 100 mm OD



400 X 300 X 120 mm OD
400 X 300 X 150 mm OD*
400 X 300 X 175 mm OD*
400 X 300 X 220 mm OD



400 X 300 X 240 mm OD
400 X 300 X 275 mm OD
400 X 300 X 320 mm OD

500 X 325 SERIES



500 X 325 X 100 mm OD
500 X 325 X 150 mm OD*



500 X 325 X 200 mm OD*
500 X 325 X 250 mm OD



500 X 325 X 360 mm OD

600 X 400 SERIES



600 X 400 X 080 mm OD*
600 X 400 X 120 mm OD*



600 X 400 X 150 mm OD*
600 X 400 X 160 mm OD*



600 X 400 X 180 mm OD*
600 X 400 X 225 mm OD

* Also available in Sides Perforated(SP) and Totally Perforated(TP) versions.

600 X 400 SERIES



600 X 400 X 245 mm OD*
600 X 400 X 285 mm OD*
600 X 400 X 300 mm OD



600 X 400 X 325 mm OD*
600 X 400 X 375 mm OD*



600 X 400 X 425 mm OD*
600 X 400 X 485 mm OD*

Jumbo Series



MINI JUMBO

650 X 450 X 130 mm OD
650 X 450 X 140 mm OD
650 X 450 X 150 mm OD
650 X 450 X 210 mm OD*



JUMBO

650 X 450 X 315 mm OD*
(Also available in DOUBLE WALL)
650 X 450 X 325 mm OD*



MAHA JUMBO

650 X 450 X 485 mm OD*



SUPER JUMBO

810 X 570 X 425 mm OD*
(Also available with wheels)



Custom - Made Fabrication Crates



Made to order as per client requirements for various crate models.

* Also available in Sides Perforated(SP) and Totally Perforated(TP) versions.

Industrial Crate Accessories

CRATE ELBOW



CARD HOLDER

CARD HOLDERS



CRATE ELBOW



KANBAN CARD HOLDER



REGULAR CARD HOLDER



XLPE FOAM PASTING



SOFT LID COVER

ESD ANTI STATIC CRATES

Crates with anti static properties, specifically for electronic components available on request in all sizes.



FLAT BOTTOM CRATES

Crates with Flat-Bottom for conveyor movement, available on request in select sizes



SCREEN PRINTING, NUMBERING ON CRATES & TRANSPARENT CRATES AVAILABLE**

Fruit & Vegetable Crate / Multi Purpose



542 X 360 X 290 mm OD
Medium Jali - Multi Purpose
(Also available in BIG and SMALL JALI size.)



542 X 360 X 295 mm OD
Complete Closed
Multi Purpose



500 X 325 X 200 mm OD
Grapes Crate - Totally Perforated

400 X 325 X 250 mm OD
400 X 325 X 280 mm OD
Tomato Crate



542 X 395 X 342 mm OD
Banana Crate



Bin Series



BIN 5
165 X 114 X 78 mm OD



BIN 15
190 X 125 X 100 mm OD



BIN 25
225 X 150 X 125 mm OD



BIN 35
295 X 210 X 160 mm OD



BIN 45
350 X 215 X 200 mm OD



BIN 50
510 X 310 X 200 mm OD



Dairy/Milk Crate
470 X 378 X 168 mm OD



40 Ltr Milk Can
360 X 660 mm OD

Dairy Crates & Milk Cans

Fisheries Crate



Round Crate
510 X 210 mm OD



Ribbon Fish Crate
770 X 340 X 70 mm OD



Jumbo
650 X 450 X 315 mm OD

Roto Moulded Crates



51 Ltr.
770 X 410 X 220 mm OD



106 Ltr.
600 X 410 X 585 mm OD



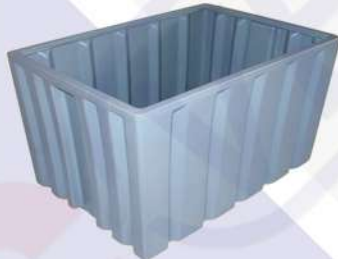
110 Ltr.
665 X 665 X 325 mm OD



125 Ltr. (Lumbo)
985 X 480 X 335 mm OD
(Also used for Fisheries)



170 Ltr.
770 X 625 X 405 mm OD



258 Ltr.
825 X 600 X 630 mm OD



270 Ltr.
810 X 560 X 640 mm OD



415 Ltr.
980 X 770 X 705 mm OD



650 Ltr.
1165 X 840 X 780 mm OD



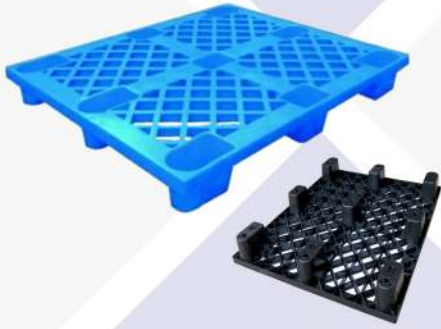
950 Ltr.
1340 X 1195 X 780 mm OD



1200 Ltr.
1625 X 1160 X 762 mm OD

1450 Ltr.
1830 X 1160 X 762 mm OD

Injection Moulded Pallets



Export Pallet

1200 x 1000 x 140 (9 Leg)
Avaliable in both Virgin and reprocessed.



Complete Flat Top (9 Leg)

1200 x 1000 x 80 mm OD**
1200 x 1000 x 130 mm OD** (LW & HW)



Complete Flat Top

1200 x 1000 x 150 mm OD**
(3 Runner)



Perforated Top Series
(3 Runner)

1200 x 1000 x 150 mm OD** (LW & MW)
1200 x 1000 x 160 mm OD** (LW , MW & HW)



Semi Flat Top (FT) - 3 Runner

1200 x 1000 x 150 mm OD



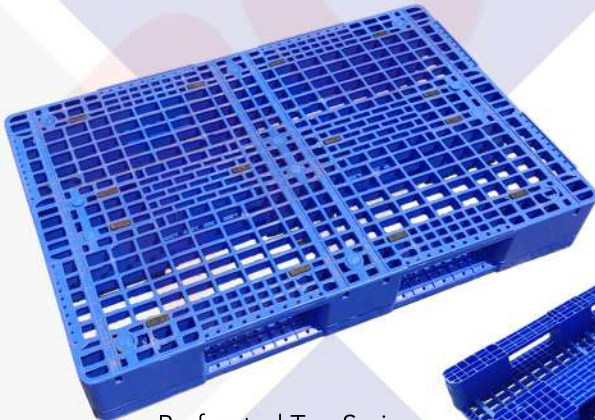
Perforated Top Series
(3 Runner)

1200 x 800 x 145 mm OD**



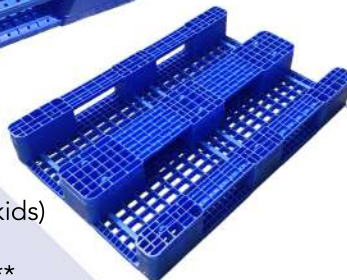
Perforated Top Series
(3 Runner)

1100 x 1100 x 150 mm OD**



Perforated Top Series
(3 Runner with detachable skids)

1200 x 800 x 165 mm OD**



****STEEL REINFORCEMENT PALLETS ALSO AVAILABLE.**

All versions with Reinforced Steel and PUF Insulation available.
Models available in 2- way entry and 4 - way entry also.
(3 - Runner and 9 - Leg)

Roto Moulded Pallets

3 - RUNNER PALLET



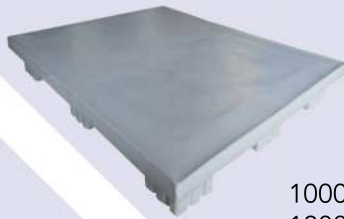
750 x 750 x 150 mm OD
1000 X 1000 X 150 mm OD



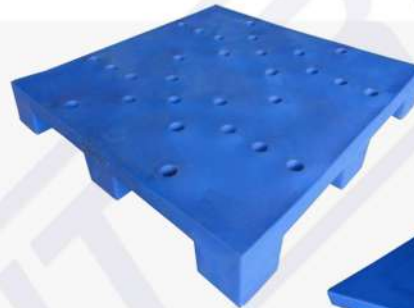
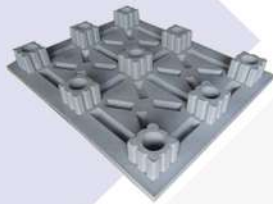
1200 X 800 X 150 mm OD
1200 X 1000 X 150 mm OD



9 - LEG PALLET



1000 X 1000 X 150 mm OD
1200 X 800 X 150 mm OD



1200 X 1000 X 150 mm OD
1200 X 1000 X 160 mm OD
1200 X 1200 X 150 mm OD
1200 X 1200 X 160 MM OD



1120 x 1120 x 150 mm OD
SEMI PERFORATED PALLET



1200 X 1000 X 130 MM OD
(ECO)
LIGHT WEIGHT
WAREHOUSING PALLET

Pallet Fork-Lifts



2.5 Ton Hand Pallet Truck

Capacity : 2500 kgs
Length : 1150
Width : 550
Max. height : 195
Min. height : 85
Lifting Height : 110
Single fork width : 160

3 Ton Hand Pallet Truck

Capacity : 3000 kgs
Length : 1220
Width : 685
Max. height : 195
Min. height : 85
Lifting Height : 110
Single fork width : 160



Insulated Ice Box

Roto Moulded Ice box



25 Ltr.
385 X 320 X 340 mm OD



70 Ltr.#
690 X 510 X 572 mm OD



70 Ltr Strap.
765 X 490 X 365 mm OD



310 Ltr Strap.
920 X 730 X 765 mm OD

50 Ltr.
597 X 387 X 400 mm OD

100 Ltr.#
825 X 550 X 430 mm OD

60 Ltr.
620 X 410 X 440 mm OD

120 Ltr.#
680 X 670 X 610 mm OD

150 Ltr.#
835 X 565 X 755 mm OD

225 Ltr.#
1045 X 730 X 675 mm OD

#Also with Vending Lid and Drain Hole available.

Injection Moulded Ice box



6 Ltr.
270 X 214 X 190 mm OD



14 Ltr.
350 X 274 X 240 mm OD



60 Ltr.
640 X 375 X 390 mm OD



50 Ltr.
625 X 360 X 355 mm OD

25 Ltr.
385 X 320 X 340 mm OD

110 Ltr.
730 X 470 X 480 mm OD

Chill Pad



0.5 Ltr
203 x 80 x 36 mm OD



2 Ltr
292 X 224 X 41 mm OD

4 Ltr
267 X 335 X 52 mm OD

Also with Wheel, Vending Lid,
Plug & Long Handle
available for
Injection Moulded crates.

Combination Series - FRP



DUO

Nom. Volume (L) : 60 x 2 units
OD : 800 (L) X 400 (W) X 800 (H) mm
(FRP Segregation bin with PE Inner Containers)



TRIO

Nom. Volume (L) : 60 x 3 units
OD : 1200 (L) X 400 (W) X 800 (H) mm
(FRP Segregation bin with PE Inner Containers)

QUATRO

Nom. Volume (L) : 60 x 4 units
OD : 1600 (L) X 400 (W) X 800 (H) mm
(FRP Segregation bin with PE Inner Containers)



Combination Series - Stainless Steel



STEEL DUO

Nom. Volume (L) : 60 x 2 units
OD : 800 (L) X 400 (W) X 800 (H) mm
(Steel Segregation bin with PE Inner Containers)

STEEL TRIO

Nom. Volume (L) : 60 x 3 units
OD : 1200 (L) X 400 (W) X 800 (H) mm
(Steel Segregation bin with PE Inner Containers)



PPT- WB - 2in1

Nom. Volume (L) : 60 x 2 units
OD : 750 (L) X 370 (W) X 710 (H) mm
(Plastic Segregation bin with PE Inner Containers)



PPT - WB - 3in1

Nom. Volume (L) : 60 x 3 units
OD : 685 (L) X 685 (W) X 710 (H) mm
(Plastic Segregation bin with PE Inner Containers)



Mobile Garbage Bin Series

- Injection Moulded Plastic Bins (2-Wheeled & 4-Wheeled)



120L

Nom. Volume (L) : 120
 OD : 480 (L) X 550 (W) X 940 (H) mm
 Useful Load (kg) : 60
 (2-Wheeled bin with lid)
 #Colours available



360L

Nom. Volume (L) : 360
 OD : 670 (L) X 845 (W) X 1170 (H) mm
 Useful Load (kg) : 135
 (2-Wheeled bin with Lid)



240L

Nom. Volume (L) : 240
 OD : 580 (L) X 730 (W) X 1080 (H) mm
 Useful Load (kg) : 110
 (2-Wheeled bin with Lid)
 #Colours available



FLEXI 50

Nom. Volume (L) : 50
 OD : 425 (L) X 325 (W) X 510 (H) mm
 Useful Load (kg) : 25

FLEXI 80

Nom. Volume (L) : 80
 OD : 480 (L) X 370 (W) X 710 (H) mm
 Useful Load (kg) : 40



1100L

Nom. Volume (L) : 1100
 OD : 1373 (L) X 1073 (W) X 1354 (H) mm
 Useful Load (kg) : 440
 (4-Wheeled bin with Lid, Wheel lock and Drain Hole)

Also available in Metal



660L

Nom. Volume (L) : 660
 OD : 1310 (L) X 775 (W) X 1175 (H) mm
 Useful Load (kg) : 310
 (4-Wheeled bin with Lid, Wheel lock and Drain Hole)

Compactor Compatible Wheeled Bins

Classic Free Stand Series

- Rotational Moulded Plastic Bins



Dome Bin 60

Nom. Volume (L) : 60
 OD : 360 (L) X 360 (W) X 875 (H) mm
 (Square shaped stationary bin with Dome lid- 2 sides open)



Dome Bin 80

Nom. Volume (L) : 80
 OD : 410 (L) X 410 (W) X 915 (H) mm
 (Square shaped stationary bin with Dome lid- 2 sides open)



Dome Bin 110

Nom. Volume (L) : 110
 OD : 510 (L) X 510 (W) X 910 (H) mm
 (Square shaped stationary bin with Dome lid- 2 sides open)



Dome Bin 150

Nom. Volume (L) : 150
 OD : 590 (L) X 590 (W) X 940 (H) mm
 (Square shaped stationary bin with Dome lid- 2 sides open)



Bin with Single Stand

Available in all 4 sizes on order
 (Square shaped stationary bin with metal frame)



Bin with Twin Stand

Available in all 4 sizes on order
 (2 Square shaped stationary bin with metal frame)

Lid Options for Classic Dome Bins on Special Request



Metro

Nom. Volume (L) : 60
 OD : 360 (D) X 700 (H) mm
 (Cylindrical stationary bin with Top open)



Metro-EX & Metro-FX

Nom. Volume (L) : 60
 OD : 360 (D) X 700 (H) mm
 (Cylindrical stationary bin with Top open, Small segregation label)
 #4 Colours available



Metro with Swing Top

Nom. Volume (L) : 60
 OD : 360 (D) X 700 (H) mm
 (Cylindrical stationary bin with Steel Swing Top)
 #Special Marble Colours available on order

Bio - Medical / Pedal Waste Bin Series



MAGNUM 15

Nom. Volume (L) : 15
OD : 275 (L) x 292 (W) x 345 (H) mm
(Bin with foot operated pedal)



MAGNUM 20

Nom. Volume (L) : 20
OD : 320 (L) x 320 (W) x 390 (H) mm
(Bin with foot operated pedal)



120L Pedal Bin

Nom. Volume (L) : 120
OD : 465 (L) x 540 (W) x 960 (H) mm
(Bin with 2-Wheel and Centre Pedal)



240L Pedal Bin

Nom. Volume (L) : 240
OD : 580 (L) x 730 (W) x 1080 (H) mm
(Bin with 2-Wheel and Centre Pedal)



Bin Trolleys

Made to Order as per client requirements for various bin models.
(Trolley made in Mild Steel or Stainless Steel)

** All Images are graphical representations of the products. In an effort towards continuous improvement, the company reserves all rights to change details of its products, without prior notice.

** All dimensions and capacities are approximate.
Unit of measurement, 'KiloGram', 'Litre', 'MilliMeter'
OD: Outer Dimension