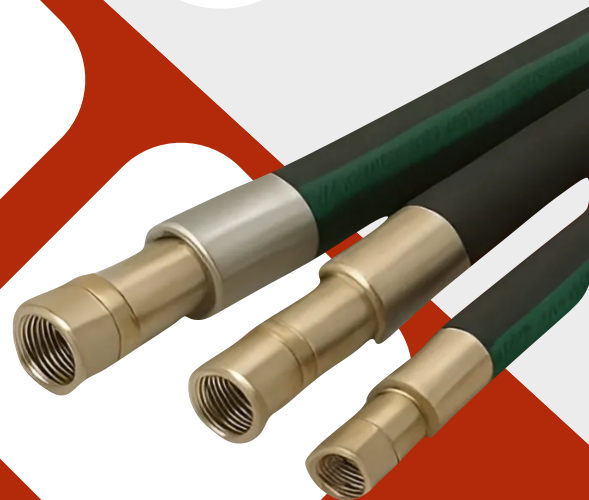
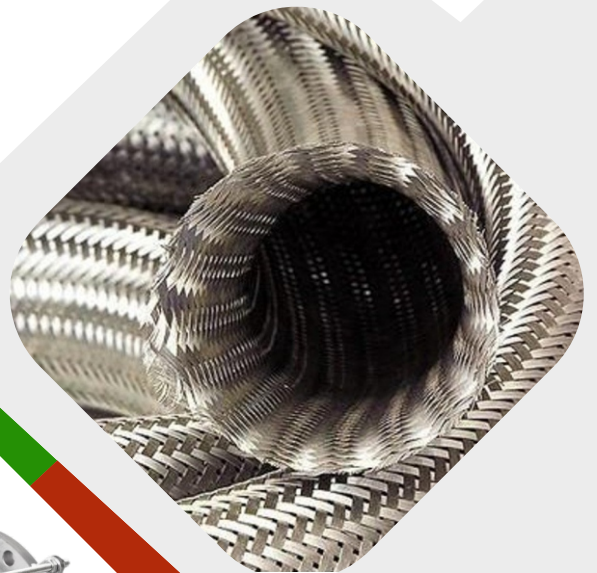




***Delivering Precision,  
Ensuring Quality -  
On Time, Every Time.***

# **Industrial Hose Solutions**



**SS FLEXHOSE (INDIA) PVT. LTD.**

**AN ISO 9001 : 2015 CERTIFIED CO.**

**HOSE & BELLOW DIVISION**

# PROFILE

Established in Delhi, India, in 1995 as “S.S. & Rubber Flexibles,” our company has grown and rebranded as SS FLEXHOSE (INDIA) PVT. LTD. since 2015. Through continuous market research, unwavering dedication, and technical advancements under the leadership of our mentor, Mr. B. Lal, we have earned the trust of a diverse clientele, built a strong market presence, and established a reputation for high-quality management and transparency in our operations.

**Our Mission:** To deliver high-performance industrial and automotive solutions that meet the evolving needs of our customers, while upholding the values of integrity, innovation, and excellence in every product we manufacture.

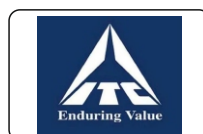
**Quality Assurance:** We adhere to rigorous quality control standards at every stage of production. Each product undergoes detailed inspection and testing to ensure durability, reliability, and compliance with international performance benchmarks.

**Innovation & Technology:** Driven by a commitment to continuous improvement, we integrate the latest technological advancements into our manufacturing processes, enabling us to offer cutting-edge solutions in SS, hydraulic, PVC, Teflon, and other flexible products.

**Customer-Centric Approach:** Our growth is built on trust and long-term relationships. We work closely with clients to understand their unique requirements and offer customized, cost-effective solutions with prompt support and after-sales service.

**Sustainability & Responsibility:** We are committed to environmentally responsible manufacturing practices. From resource-efficient production to recyclable materials, our focus is on building a sustainable future while delivering value to our stakeholders.

**Our Clients & Industry Sectors:** Over the years, SS FLEXHOSE (INDIA) PVT. LTD. has proudly served a wide spectrum of industries across India and abroad. Our commitment to quality, innovation, and customer satisfaction has earned us the trust of numerous reputed clients in both public and private sectors.



# PRODUCT RANGE

## SS HOSES

Stainless Steel Corrugated Hoses made from SS304, SS316, and SS321. high-pressure and high-temperature (-200°C to +600°C) corrosion resistant, vibration-absorbing, Available in single/double braided forms. widely used in refineries.

## SS EXPANSION BELLOWS

Flexible connectors for thermal expansion, vibration, displacement. Made from SS304/SS316/SS321. OIN R1-R4, multi-spiral. EJMA tested for fatigue, pressure, high temperatures.

## HYDRAULIC HOSES

Reinforced rubber/thermoplastic hoses for industrial and automotive use, Rated up to 10000 PSI Variants R1-R15, multi-spiral. SAE/EN/DIN comp-plant, oil handling.

## SS BRAIDING

SS 304 / SS 316 braiding reinforces hoses for steam, gas, and chemical transfer, protecting against abrasion and pressure surges. Withstands -200°C to +600°C, offering corrosion resistance, flexibility, and durability in industrial, automotive, and HVAC applications.

## TEFLON HOSES (PTFE HOSES)

Chemical resistance, non-stick, -20 °C to +600C. Provides abrasion protection, high pressure, and internal pressure-tightness,

## INTERLOCK HOSES

Flexible metal conduits from interlocked SS strips. Convey exhaust gases, vapors, and protect cables. Durable, flexible, withstands heat and stress,

## COMPOSITE HOSES

Multi-layer thermoplastic liners with SS wire helix. Used for fuels, acids. chemicals. Lightweight, flexible, EN13/65/66 tested. For terminals, tank \* trucks (-40°C to +60°C).

## PVC HOSES

Economical hoses for water, air, chemicals, food-grade uses, Garden, suction, braided, transparent tubing. UV-resistant, food-grade compliant (-10°C to +60 °C).

## RUBBER BELLOWS

Absorb vibration, thermal expansion, and misalignment. Used in HVAC, water treatment, and chemical plants. Handle up to 120°C. Suitable for low-pressure fluid/gas, reduce noise and extend system life.

# PRODUCT OVERVIEW: SS HOSE & SS BRAIDED HOSE

SS Hoses (Stainless Steel Corrugated Hoses) are flexible metal hoses designed to carry a wide range of fluids and gases, offering high-pressure resistance and durability. When braided with stainless steel wire, they gain enhanced strength, stability, and pressure capacity.

## CORE STRENGTHS

Flexibility with Strength: Corrugated design enables movement, while SS braid resists elongation and pressure.

Corrosion Resistance: Ideal for aggressive chemicals, steam, water, oils, and gases.

High Pressure Rating: Handles high-pressure applications without bulging or rupturing.

Thermal Resistance: Operates efficiently in -200°C to +600°C (varies with grade).

Long Lifespan: Minimal fatigue under cyclic loading; superior to rubber or PVC hoses.

## KEY APPLICATIONS

Petrochemical & Refineries, Steam and Gas Lines, Hydraulic & Pneumatic Systems, Automotive Exhaust and Turbo Lines, Cryogenic Transfer, Food & Pharmaceutical Industries

## TYPES AVAILABLE

Annular Corrugated SS Hose: Standard for general-purpose flexibility and vibration absorption. Helical Corrugated SS Hose: Used where helical movement is required.

Single/Double Braided: Double braided for higher pressure resistance.

## INSTALLATION PRECAUTIONS

Avoid twisting or over-bending the hose. Ensure correct bend radius as per specifications. Use anti-vibration supports for dynamic systems. Install with proper end fittings: BSP/NPT/ Flanged/Camlock. Always depressurize system before maintenance.

## QUALITY ASSURANCE & STANDARDS

Manufactured as per: BS 6501 / ISO 10380 / ASTM A240

Tested for: Hydrostatic Pressure, Leakage, Vibration, Burst

Materials: SS304, SS316, SS321 (as per media and temperature)

## SUSTAINABILITY & SAFETY

100% recyclable stainless steel, Leak-proof and explosion-safe, Non-toxic and ideal for hygienic industries.

## WHY CHOOSE US?

Custom Hose Assemblies.

Crimped, TIG welded, or interlocked end fittings.

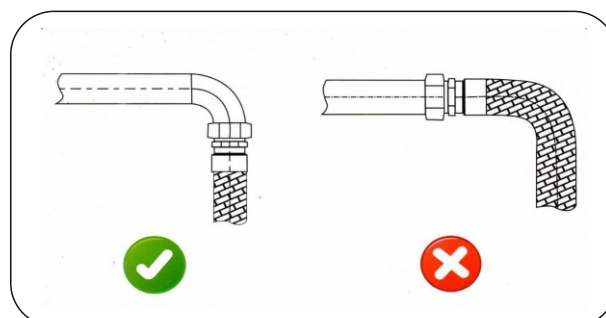
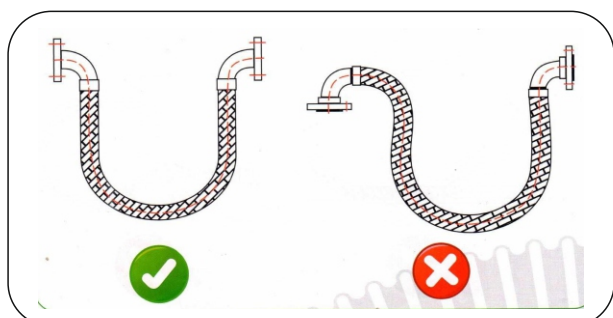
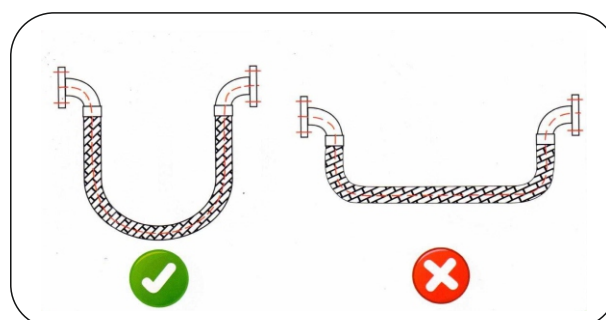
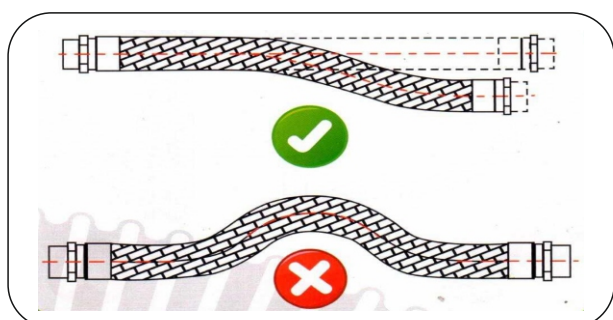
100% testing before dispatch

# TECHNICAL DATA AND PRESSURE SHEET

Pressure Reting Table

N.B.(MM)	MINIMUM BEND RADIUS		MAX. WORKING PRESSURE		SINGLE BRAID		DOUBLE BRAID	
	STATIC	FLEXING	MAX WORKING PRESSURE Kg/cm2	TEST WORKING PRESSURE Kg/cm2	MAX WORKING PRESSURE Kg/cm2	TEST WORKING PRESSURE Kg/cm2	MAX WORKING PRESSURE Kg/cm2	TEST WORKING PRESSURE Kg/cm2
6	25	100	4	6	100	150	160	240
10	40	150	4	6	90	135	144	216
12	50	200	3	4.5	80	120	128	192
16	50	200	3	4.5	70	105	112	168
20	70	200	2	3	64	96	102	153
25	90	200	2	3	50	75	80	120
32	110	250	1.5	2.3	40	60	64	96
40	130	250	1.5	2.3	30	45	48	72
50	175	350	1	1.5	28	42	44	66
65	200	410	1	1.5	24	36	38	57
80	205	450	1	1.5	18	27	28	42
100	230	560	0.8	1.2	16	24	26	39
125	280	660	0.6	0.9	12	18	20	30
150	320	815	0.6	0.9	10	15	16	24
200	375	950	0.5	0.8	9	13	14	20
250	435	1015	0.5	0.75	8	12	12	18
300	495	1200	0.3	0.4	6	9	8	10
350	550	1310	0.2	0.3	5	7.5	6.5	8.5

## INSTALLATION PRECAUTIONS



# ENGINEERING SPECIFICATIONS - LOW TO HIGH PRESSURE HOSES



## LOW PRESSURE HOSES

**PS-LP1** Bare tube resistant to the effect of petroleum based fuel & lubricants. Outer cover steel wire braided meets DIN 73379 requirements.

**PS-LP2** Bare tube outer cover metallic braided - further strengthened by vulcanised rayon braiding between rubber tubing and outer metallic braiding.

HOSE TYPE	Physical Data	I.D.(In.)	3/16	1/4"	5/16"	3/8"	1/2"	5/8"	3/4"	1"	1-1/4"	Temp. Range
		I.D.(mm)	4.8	6.4	7.9	9.5	12.7	15.9	19	25.4	31.8	
	Working Pressure	Kg/cm <sup>2</sup>	30	25	20	20	18	15	15	15	15	
		PSI	427	356	284	284	256	213	213	213	213	
	Test Pressure	Kg/cm <sup>2</sup>	50	40	35	35	30	30	30	30	30	
		PSI	711	569	498	498	427	427	427	427	427	
	Min Bend Radius (mm)		25	30	40	45	50	70	90	120	175	
	Working Pressure	Kg/cm <sup>2</sup>	55	50	45	40	35	30	25	25	25	
		PSI	782	711	640	569	498	427	356	356	356	
	Test Pressure	Kg/cm <sup>2</sup>	95	85	75	70	60	50	40	40	40	
		PSI	1351	1209	1067	995	853	711	569	569	569	
	Min Bend Radius (mm)		55	65	75	90	105	120	140	160	180	



## LOW PRESSURE HOSES

**PS-R6** In case of R6 single rayon braid impregnated with Synthetic Rubber, against oil weather and abrasion. For Applications in Hydraulic liquids, air, water, oils, fuel, propane and butane gas (Conforming to Std. SAE-100 R 6)



**PS-R3** Two braids of suitable textile yarn. Synthetic Rubber Cover against oil, weather and abrasion. For applications in hydraulic oils, fuel, lubricating oils, anti-freeze solutions and water (Conforming to Std. SAE - 100 R 3)

HOSE TYPE	Physical Data	I.D.(In.)	3/16"	1/4"	5/16"	3/8"	1/2"	5/8"	3/4"	1"	1-1/4"	1-1/2"	Temp. Range
		I.D.(mm)	4.8	6.4	7.9	9.5	12.7	15.9	19	25.4	31.8	38.1	
	Working Pressure	Kg/cm <sup>2</sup>	35	28	28	28	28	25	18	-	-	-	
		PSI	500	400	400	400	400	350	250	-	-	-	
	Test Pressure	Kg/cm <sup>2</sup>	70	56	56	56	56	49	35	-	-	-	
		PSI	1000	800	800	800	800	700	500	-	-	-	
	Min Bend Radius (mm)		51	64	76	76	102	127	177	-	-	-	
	Working Pressure	Kg/cm <sup>2</sup>	105	88	84	74	70	62	53	40	26	18	
		PSI	1500	1250	1200	1125	1000	875	750	565	375	250	
	Test Pressure	Kg/cm <sup>2</sup>	211	176	169	158	141	123	105	79	53	35	
		PSI	3000	2500	2400	2250	2000	1750	1500	1125	750	500	
	Min Bend Radius (mm)		76	76	102	102	127	140	152	203	254	305	



## STEAM HOSES

Seamless sythetic heat resistant rubber tube. PS-HT2 has two steel wirre braids, synthetic rubber cover against oils, weather and abrasion. For usage on steam. Suitable for working Temperature upto 200 C and for steam pressure of 220 PSI. Single steel wire braided steam hose can also be provided (PS-HT-1) which can with stand upto 150PS1.

HOSE TYPE	Physical Data	I.D.(In.)	3/16"	1/4"	5/16"	3/8"	1/2"	5/8"	3/4"	1"	1-1/4"	1-1/2"	2"	Temp. Range
		I.D.(mm)	4.8	6.4	7.9	9.5	12.7	15.9	19	25.4	31.8	38.1	50.8	
	Working Pressure	Kg/cm <sup>2</sup>	15	15	15	15	15	15	15	15	15	15	15	
		PSI	220	220	220	220	220	220	220	220	220	220	220	
PS-HT2	Min Bend Radius (mm)		90	100	115	125	180	200	240	380	420	510	635	For Working Temp. upto 200°C



## PS-P1 (P.T.F.E)

Inner TEFLON tube, reinforcement by single layer cr stainless steel wire. TEFLON flexible hoses are suitable for temperature between - 73° to +260° C for longer periods and have an unlimited shelf life. For application in Diluted or concentrated acids, caustics, hot lacquers, solvents, fuel, oil, oxidising agents, gases, foods, drugs, Generally unaffected by all chemicals (except melted alkaline metals). For maximum Steam pressures upto 250 PSI.

STEAM HOSE	P1 (P.T.F.E.)	Physical Data	I.D.(In.)	3/16"	1/4"	5/16"	3/8"	1/2"	5/8"	3/4"	7/8"	1"	Temp. Range
			I.D.(mm)	4.8	6.4	7.9	9.5	12.7	15.9	19	22.2	25.4	
		Working Pressure	Kg/cm <sup>2</sup>	281	211	186	176	141	123	105	88	70	
			PSI	4000	3000	2650	2500	2000	1750	1500	1250	1000	
		Test Pressure	Kg/cm <sup>2</sup>	563	422	373	352	281	246	211	176	141	
			PSI	8000	6000	5300	5000	4000	3500	3000	2500	2000	
		Min Bend Radius (mm)		50	70	100	133	165	200	275	325	400	

**Between  
+73°C to + 260°C  
for long periods**

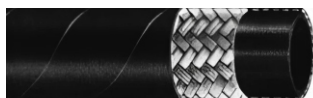


## HIGH PRESSURE/SUPER H.P. HOSE

PS-R5

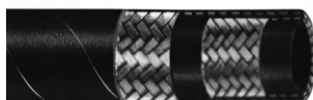
In case of R5C single wire braid reinforcement separated by two textile braids impregnated with a Synthetic Rubber compound against oil, weather and abrasion. In case of R5R : Same as R5C but instead of cotton, a synthetic rubber cover is used. For applications in hydraulics, water, hot oils, heavy and light hydrocarbons.

HOSE TYPE	R 5	Physical Data	I.D.(In.)	3/16"	1/4"	5/16"	13/32"	1/2"	5/8"	7/8"	1-1/8"	1-3/8"	1-13/16"	Temp. Range  (Intermittent )
			I.D.(mm)	4.8	6.4	7.9	10.3	12.7	15.9	22.2	28.6	34.9	46	
		Working Pressure	Kg/cm²	211	211	158	141	123	105	56	44	35	25	
			PSI	3000	3000	2250	2000	1750	1500	800	625	500	350	
		Test Pressure	Kg/cm²	422	422	316	246	211	113	88	88	70	49	
			PSI	6000	6000	4500	4000	3500	3000	1600	1250	1000	700	
		Min Bend Radius (mm)			76	86	102	117	140	165	187	229	267	



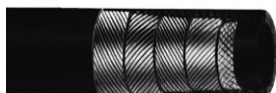
PS-R1

Inner Tube of oil resistant synthetic rubber, a single wire braid reinforcement and a cover of oil & weather resistant synthetic rubber. Conforms to SAEJ 517-100R1 & BS : 3832 suitable for use with petroleum & water bases hydraulic fluids.



PS-R2

Inner Tube of oil resistant synthetic rubber, two braids of steel wire reinforcement and a cover of oil & weather resistant synthetic rubber. Conforms to SAEJ 517-100R2 & BS : 3832 suitable for use with petroleum & water based hydraulic fluids.



PS-R9R/  
PS-R10

Seamless synthetic rubber tube with reinforcement of 4 spirals of high tensile steel wire and synthetic rubber cover resistant to weather, oil and abrasion. Conforming to DIN 20023-4SP. PS-R 9 R upto 1" . PS-R 10 over 1" .



PS-SP4/2

Tube of synthetic rubber with several layers of steel spiral wire: reinforcement with rubber cover. Should be used for severe duty. Conforms generally to SAEJ 517-100R10.

HOSE TYPE	PS - R1	Physical Data	NW Size	1/4"	5/16"	3/8"	1/2"	5/8"	3/4"	1"	1-1/4"	1-1/2"	2"	Temp. Range
			I.D.(mm)	6.4	7.9	9.5	12.7	15.9	19.0	25.4	31.8	38.1	50.8	
		Working Pressure	Kg/cm <sup>2</sup>	193	176	158	140	105	88	70	44	35	26	-40°C to +120°C (Intermittent)
			PSI	2750	2500	2250	2000	1500	1250	1000	625	500	375	
		Test Pressure	Kg/cm <sup>2</sup>	387	352	317	281	211	176	140	88	70	53	
			PSI	5500	5000	4500	4000	3000	2500	2000	1250	1000	750	
		Min Bend Radius (mm)		102	114	127	178	203	241	305	419	508	635	
		Working Pressure	Kg/cm <sup>2</sup>	350	300	281	246	193	158	141	114	88	79	
			PSI	5000	4250	4000	3500	2750	2250	2000	1625	1250	1125	
		Test Pressure	Kg/cm <sup>2</sup>	703	598	562	492	382	316	281	228	176	158	
			PSI	10,000	8500	8000	7000	5500	4500	4000	3250	2500	2250	
		Min Bend Radius (mm)		102	114	127	178	203	241	305	419	508	635	
		Working Pressure	Kg/cm <sup>2</sup>	459	-	454	422	369	359	295	214	188	176	
			PSI	6530	-	6450	6000	5250	5100	4200	3050	2680	2500	
		Test Pressure	Kg/cm <sup>2</sup>	1102	-	1089	1013	886	861	709	515	452	422	
			PSI	15672	-	15480	14400	12600	12240	10080	7320	6430	6000	
		Min Bend Radius (mm)		150	-	178	230	250	300	340	457	559	660	
		Working Pressure	Kg/cm <sup>2</sup>	525	-	445	415	400	395	325	250	215	175	
			PSI	74600	-	6328	5901	5688	5617	4622	3555	3057	2489	
		Test Pressure	Kg/cm <sup>2</sup>	1260	-	1070	995	960	950	780	595	510	420	
			PSI	17917	-	15215	14149	13651	13509	11092	8461	7252	5972	
		Min Bend Radius (mm)		100	-	130	180	200	280	340	460	560	660	

- NOTE :**
- All working pressures indicated above are Dynamic Working Pressures. Static Working pressures are 1.25 times higher than dynamic pressures.
  - Hoses indicated above are of Type "A" i.e. thick walled. Hoses with thin wall ie type "AT" can also be supplied which have less O.D.
  - The above HP/super HP Hoses are made of rubber compound. For similar applications Light Weight THERMOPLASTIC HOSES can also be supplied in various sizes against specific enquiries.



### **PLANT 1**

**C-225, Sector-3, DSIIDC,  
Industrial Area, Bawana,  
Delhi-110039  
Contact Detail  
+91-9871114250/51**

### **PLANT 2**

**Plot No. 07, Street No. 9,  
Sector-2B, Reliance MET City,  
Dadri Toe, Jhajjar, Haryana-124103  
Contact Detail  
+91-9810577972/78**

## **CORPORATE E-MAIL ADDRESS**

✉ [ssflexhose@gmail.com](mailto:ssflexhose@gmail.com)  
✉ [info@ssflexhose.com](mailto:info@ssflexhose.com)

✉ [ssrubber225@gmail.com](mailto:ssrubber225@gmail.com)  
✉ [sales@ssflexhose.com](mailto:sales@ssflexhose.com)

## **SOCIAL MEDIA**

 **SS Flexhose - India Pvt. Ltd**  **ssflexhose11**  **SSFLEXHOSE**

 **SS FLEXHOSE ( INDIA ) PVT. LTD.**  **SS FLEXHOSE INDIA PVT.LTD.**



[www.ssflexhose.com](http://www.ssflexhose.com)



[www.flexhoseindia.com](http://www.flexhoseindia.com)