

# Product Catalogue



# TABLE OF CONTENTS

INSPECTON ERA .....	3
Vision Solutions .....	4
Conveyors .....	7
Machines .....	8
Teledyne Bumblebee .....	9
Area Scan Cameras .....	10
Area Scan Accessories .....	15
Lenses .....	22
Vision Lightings .....	24
Smart Cameras .....	25
Barcode Readers .....	26
Safety Products .....	28
Photoelectric Sensors .....	29
Special Sensors .....	35
Reflectors .....	36
Ultrasonic Sensors .....	37
Radar Sensors .....	38
Distance Measurement Laser Sensors .....	39
Label Gap Sensors .....	40
Slot Sensors .....	41
Registration Mark, Colour sensor, Luminescence sensor .....	42
Fiber Optic Sensors .....	43
Fiber Optic Amplifiers.....	44
Condition Monitoring Sensors .....	45
Industrial Wireless .....	46
Tower Lights .....	47
Indicators .....	48
Industrial LED Task Lighting .....	51
Displays .....	53
Cables .....	54



## AI-BASED OCR/OCV PRINT INSPECTION SYSTEM

### OCR/OCV, BARCODE, PATTERN MATCH, CHARACTER COUNT

Our advanced OCR/OCV print inspection system utilises artificial intelligence to ensure precise and efficient inspection of printed content.

This cutting-edge technology detects even the smallest defects and errors, ensuring that your products meet the highest standards of quality.

#### Product Features

- High-speed inspection for efficient production (up to 600 inspections per minute).
- Compliant with 21 CFR Part 11.
- Works on all types of fonts and sizes.
- Compatible with Inkjet, Thermal, and Laser printers (Dotmatrix and Continuous printing).
- 3-level user configuration.
- Unlimited Recipe and Batch creation

#### Applications

- Verifying text, logos, and barcodes on labels and packaging.
- Inspecting packaging, labels, and cartons for accuracy and quality.
- Inspecting packaging, labels, and cartons for accuracy and quality.
- Verifying expiration dates, ingredients, and nutritional information
- Verifying part numbers, serial numbers, and other critical information.

**AVAILABLE IN SINGLE / DUAL CAMERA, ONLY MATCH, AND CLOUD VERSION**





## POKA YOKE VERIFICATION FOR MANUAL ASSEMBLY OF PARTS

- Checks the presence of each part.
- Checks the sequence of parts.
- Checks the Orientation of parts.
- Trigger based / continuous inspection.



## DETECTION OF IMPORTANT PARTS

Accurately detect and verify automotive parts in assembly using advanced Machine Vision Cameras. Ensure precise part identification, tracking, and quality control, reducing errors and improving production efficiency in automotive manufacturing with our reliable and high-performance vision solutions.



## LID / CAP DETECTION

Detect LID presence or absence with precision using Machine Vision Cameras. Our solution ensures accurate and reliable inspection, enabling efficient quality control and minimizing production errors in automated manufacturing processes.

Works for all types of bottle caps and Bucket lids.



## BUCKET ORIENTATION SYSTEM

- Accurately detects the marking on buckets for orientation.
- High-speed detection
- Works for buckets from 500 g to 50 KG in weight.



## PRODUCT MIX DETECTION

- Detects the mixing of products during automated packing.
- Detection can be done based on Shape, Size, Colour, Barcode, SKU number, artwork, and label.
- Works for all types of products - Medicines, Food, Beverage, Chemical, Paint, Automotive parts, etc.



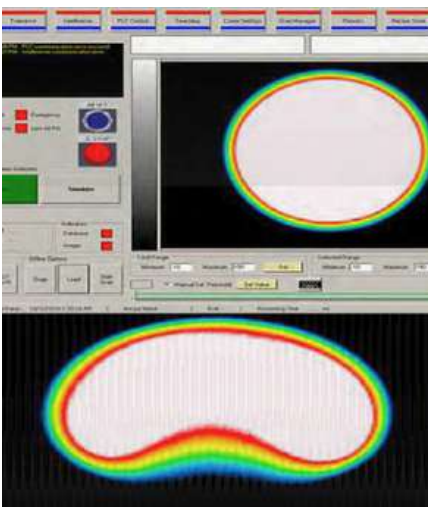
## LABEL DETECTION

- To detect the absence/presence of a label on the product.
- Works for all bottled / bucket products.
- Works for all shapes and sizes of products and labels.
- 360-degree label detection for larger products, is also available.



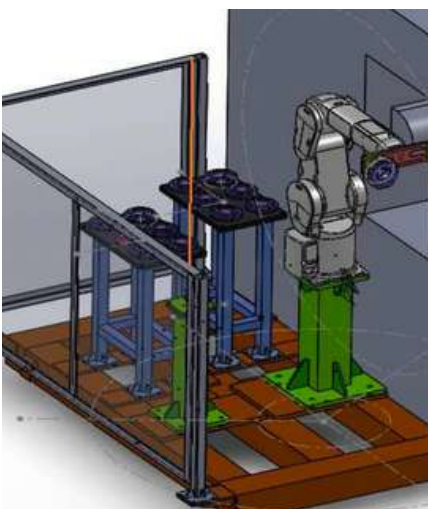
## TABLET / CAPSULE INTEGRITY INSPECTION

- Checks the shape and size of the tablets and capsules.
- Detects broken tablets.
- Can be integrated as NO FILL DETECTION on packing machines like BLISTER PACK and ALU-ALU.



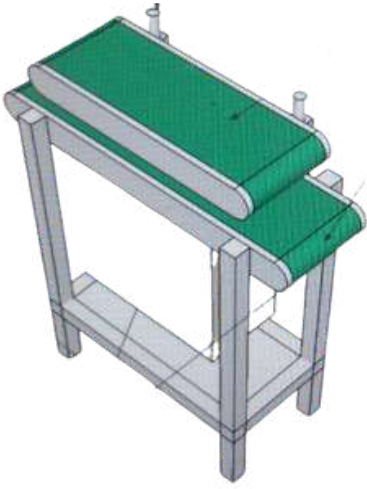
## THERMAL INDUCTION SEAL INSPECTION SYSTEM

- Online detection of Induction Seal on bottles.
- Uses a military-grade thermal camera for inspection.
- Works at a speed of 150 BPM.
- The rejection system can be integrated online.

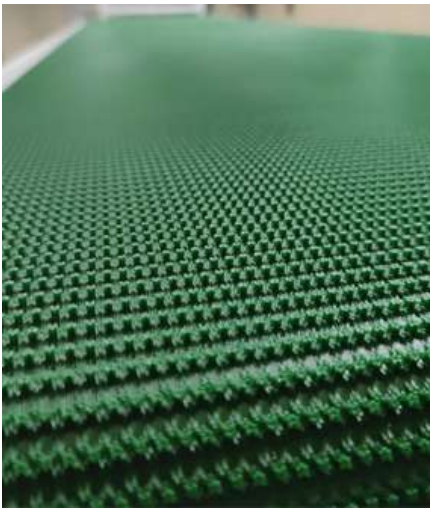


## VISION-BASED ROBOTIC PALLETIZING & GRIPPING SYSTEM

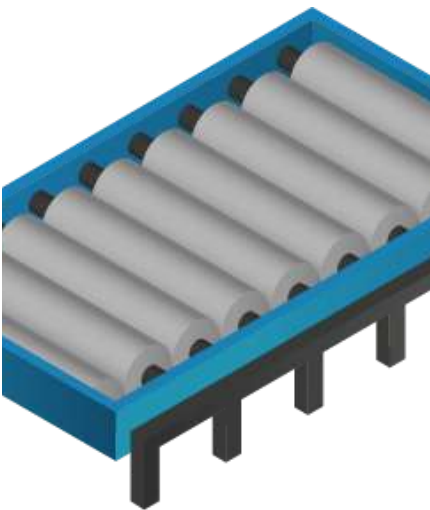
- Customised solution for automated palletizing.



**DUPLEX TRANSFER CONVEYORS**



**GRIP CONVEYORS**



**ROLLER CONVEYORS**



## LINEAR ORIENTATION MACHINE

- Single & double head machines.
- For 250g to 50KG buckets.
- Option for Infeed and Outfeed accumulation tables.
- Optional Inspection & Rejection Systems.
- For empty and filled containers.
- Can be used for plastic/tin containers.



## REJECTION SYSTEMS

- Encoder-based / Counting-based.
- Works with Sensors / Vision Cameras
- For Linear and Rotary machines.
- Customisation available for various product sizes.



## INDUSTRIAL VERTICAL LIFTERS

- With customised carriers, as per product size.
- Customised lifter height as per user requirement.
- Customised functioning and programming options.
- Lift Up or Lift Down.

High Accuracy Depth Sensing

# Bumblebee X 5GigE

Bumblebee® X is a comprehensive industrial grade (IP67) stereo vision solution with onboard processing to build successful systems for warehouse automation, robotics guidance, and logistics. The camera is designed to operate accurately across varying distances. Customers can test and deploy depth sensing systems that work up to ranges of 20 meters with the wide baseline solution.



3D STEREO CAMERA

- **Factory calibrated 24 cm baseline stereo vision with 3 MP sensors for high accuracy**
- **Onboard processing to output a depth map and color data for point cloud conversion and colorization**
- **The low latency makes it ideal for real-time applications such as autonomous mobile robots, automated guided vehicles, pick and place, bin picking, and palletization.**

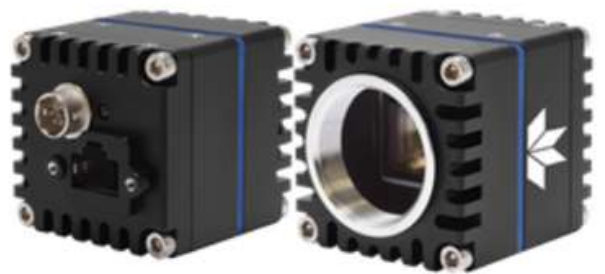
[www.UnseenEra.com](http://www.UnseenEra.com)



## Blackfly S GigE

**Light and Compact GigE camera**

- Resolutions from VGA to 24 MP, visible and Polarized
- Advanced Features & Lossless Image Compression (LLC)
- Rich ISP features: Gamma, Sharpness, CCM, AGC with ROI



## Forge 1GigE SWIR

**High-Performance, Compact, and Reliable**

- Resolution up to 1.3 MP
- Very compact SWIR form factor, supports wavelengths from 400 nm to 1.7  $\mu$ m
- 1-Gbps GigE Vision Interface, with PoE

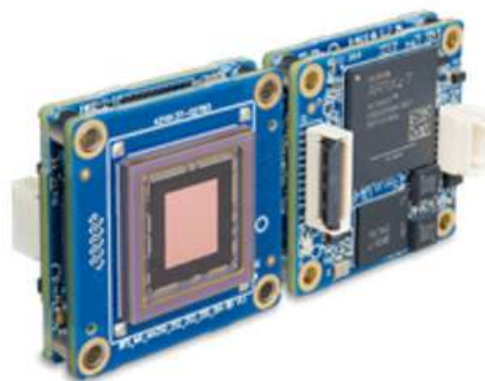




## Blackfly S USB3

Light and Compact USB3 camera

- Resolutions from VGA to 24 MP, visible and Polarized
- Advanced Features: Color Correction, Sequencer, Lossless compression and Lens shading correction
- Rich ISP features: Gamma, Sharpness, CCM, AGC with ROI



## Blackfly S Board Level

Designed for Embedded Vision Systems with Complete Accessories

- Resolutions from 1.6 MP to 20 MP
- Compact and light: 29 x 29 x 12 mm / 10 g, Compatible with popular SBCs and 3rd party software
- 1-Gbps GigE Vision Interface with PoE, and USB3 Vision



## Forge 1GigE IP67

Compact IP67 solution with complete ecosystem

- Resolutions from 1.2 MP to 12 MP
- Advanced Features & Lossless Image Compression (LLC)
- 1-Gbps GigE Vision Interface, with PoE



## Forge 5GigE

Beyond 5GigE Performance

- Resolutions from 5 MP to 24 MP
- Up to 10GigE Burst Mode Performance with Sony Pregius S sensors
- Supports speeds of 1, 2.5, 5-Gbps GigE Vision Interface, with PoE



## Dragonfly S USB3

### Ultra Light and Compact USB3 camera

- Resolutions from VGA to 12 MP
- Board-level to fully enclosed models with lightweight aluminum case and EMC Class B compliant
- Side or back USB3 connector orientations with locking adaptor



## Genie Nano 10GigE

### Compact Industrial 10-Gigabit Ethernet Cameras

- Resolutions from 37.7 MP to 67 MP
- Industry's smallest 67 MP 10GigE Vision camera
- Supports speeds of 1, 2.5, 5, & 10-Gbps GigE Vision Interface, with PoE



## Firefly S

### Ultra Compact and light USB3 camera

- Resolutions: VGA, 1.6 MP
- Rich ISP features: Gamma, Sharpness, CCM, Sharpness, Denoise, AGC with ROI
- Wide Operating temperature range, up to 85C



## Oryx 10GigE

### High bandwidth image transfer

- Resolutions from 3.2 MP to 31 MP
- Rich ISP features: Gamma, Sharpness, CCM, Sharpness, AGC with ROI
- Supports speeds of 1 and 10-Gbps GigE Vision Interface, with PoE



## / Genie Nano 5GigE

### Beyond 5GigE Performance

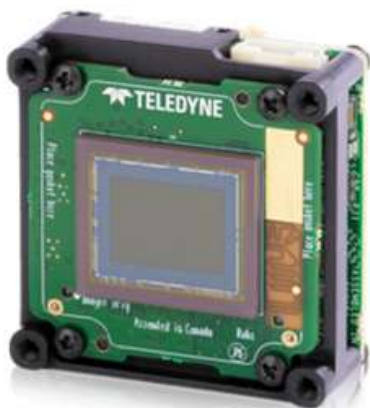
- Resolutions from 3.2 MP to 45 MP
- Up to 10GigE Burst Mode Performance & Lossless Image Compression (TurboDrive)
- Supports speeds of 1, 2.5, 5-Gbps GigE Vision Interface, with PoE



## / Genie Nano GigE

### High Speed GigE Vision cameras with Wide temperature range

- Resolutions from 0.3 MP to 25 MP
- Up to 14 000 FPS in Partial Scan & Lossless Image Compression (TurboDrive)
- 1-Gbps GigE Vision Interface, with PoE



## / LT Series Board Level

### USB3 Vision Board Level Cameras

- Resolution from 1.7 MP to 8 MP
- Side-mounted USB connectors for ease of use in OEM solutions
- Micro-B USB3 Vision Interface



## / LT Series USB3

### Slim USB3 Vision Cameras

- Resolution from 1.7 MP to 31 MP
- Latest Sony sensors & Burst Mode capability
- Micro-B USB3 Vision Interface



## **INFINITY Series**

### **High Performance Microscope Cameras**

- Up to 20 MP in resolution
- Scientific in-camera glass for consistent quality
- Feature-rich INFINITY ANALYZE software package

## **Ladybug5+**

### **Spherical 360 degree imaging**

- It is capable of acquiring impressive 8K30 or 4K60 content.
- With its patented calibration and superior global shutter sensors, the Ladybug5+ has an accuracy level of 2 mm at 10 m.
- Ladybug5+ has an IP65 rating, making it ideal for outdoor use, including street mapping.



## **Ladybug6**

### **Spherical 360 degree imaging**

Ladybug6 is the leading high-resolution camera designed to capture 360-degree spherical images from moving platforms in all-weather conditions. Its industrial-grade design and out-of-the-box factory calibration produce 72 Megapixel (MP) images with pixel values that are spatially accurate within +/- 2 mm at 10-meter distance.



# AREA SCAN ACCESSORIES



 GigE Cable




 GigE Horizontal Locking Cable



 USB 3.1 Locking Cable



 USB 3.1 Cable



// GPIO Cables with 6-pin Hirose HR10 Connector



// GPIO Cable with 7-pin JST Connector



// 12V Power Supply with 6 Pin HR10 Connector



// Tripod Adapter for BFS (30 mm), BFLY, CMLN, CM3, FFMV, FL2, FL3, FMVU



// Ladybug Desktop & Tripod Mount



// 24 V - 2.5 A Power Supply



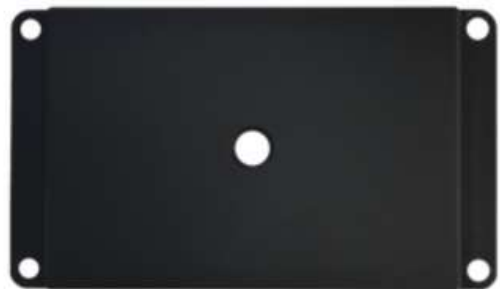
⚡ Tripod Adapter for Blackfly S 39 mm Models



⚡ Tripod Adapter for Firefly and Dragonfly S



⚡ Tripod Adapter for Forge 1GigE SWIR



⚡ Tripod Adapter for Forge 5GigE



⚡ Tripod Adapter for GRAS, GS2, GS3, GX



⚡ Tripod Adapter for Oryx 64 mm Models



CS Mount Lens Holder



CS to C Mount 5mm Spacer Adapter



CS to M12 Microlens Adapter



S Mount (M12) Lens Holder



60 mm Lens Tube Cover



C-Mount for Blackfly S board-level cameras



CS-Mount for Blackfly S board-level cameras



Oryx C Mount



Oryx F Mount



S-Mount for Blackfly S board-level cameras



USB 3.1 Hub



4 Port TF38 to USB3.1 Gen1 Hub



10 GigE Network Interface Cards



Ethernet Network Interface Card



USB 3.1 Host Controller Card



Heatsink for Board level Blackfly S



Hirose HR10 Circular GPIO Connector



Hirose HR25 Circular GPIO Connector



Micro B bulkhead  
BD - USB3



RJ45 POE bulkhead  
BD - GigE



Standard A  
bulkhead BD - USB3

# LENSES



⚡ C-mount 1" Lenses



⚡ C-mount 1.1" Lenses



⚡ Telecentric Lenses



⚡ C-mount 1/1.2" Lenses



C-mount 1/1.8" Lenses



C-mount 2/3" Lenses



S-Mount 1/3 inch Lenses



S-mount 2/3" Lenses

TAMRON

computar

Edmund optics worldwide

Tokina

FUJINON

OPTO ENGINEERING



Theia TECHNOLOGIES

ZURE PHOTONICS



AREA LIGHTS



BACK LIGHTS



LINEAR ARRAY LIGHTS



RING LIGHTS



SPOT LIGHTS



LINEAR ARRAY BACK LIGHTS



LOW-ANGLE RING LIGHTS



LASER LINE GENERATOR



SEALED BAR LIGHT



ANGLE RING LIGHT



EDGE LIGHT



DOMelight



# SMART CAMERAS

---



## IVU SERIES CAMERA

iVu PLUS TG Gen2 Sensor with Ethernet, Ring Light, and lens.



## VE SERIES CAMERA

VE Series Smart Camera for Vision  
VGA to 5 MP  
I/O: 6 Optically Isolated



## SC-3000 SERIES CAMERA

Detect object's existence, quantity, location, etc.  
1.6 MP to 3 MP  
RS232, Ethernet, I/O



## IS2000 SERIES CAMERA

In-Sight vision equipment includes pattern recognition, pixel count, brightness, contrast, edge detection, location, presence and absence, dimensions, and counting.



## IS7000 SERIES CAMERA

The IS7000 smart or machine vision sensor is developed with the complete force of robust vision algorithms and useful features to assist you resolve your uses effortlessly and easily.



# BARCODE READERS



## BR SERIES BARCODE READER

A high-performance barcode scanning module excels at reading a wide range of challenging 2D and 1D barcodes, including damaged barcodes, DPM (Direct Part Marking) engraved codes, highly reflective barcodes, high-density barcodes, small-sized barcodes, and screen barcodes. The module supports HID, VCOM, RS232, and optional Ethernet communication interfaces, making it ideal for embedded systems and automated control systems.



### IVU BCR SERIES READER



iVu PLUS Gen2 Sensor with Ethernet, Ring Light, and lens. Reads 1D & 2D barcodes.



### DATAMAN DM SERIES READER



Compact fixed-mount barcode reader. Reliably reads 1D and 2D codes. Advanced Image Formation. Can decode up to 45 codes per second.



### ID 2000 SERIES READER



Compact design and small in size. Adopts aviation connector for single cable wiring. Adopts LED aiming light to help aim codes. Adopts focus knob for adjusting focusing manually. Adopts multiple IO interfaces and plug-in power interface.



# BARCODE READERS

---



## ABR 7000 SERIES READER

Powerful decoding capability to read even difficult 1D and 2D codes. Superior ability to read DPM and low contrast codes.



## VE SERIES ID READER

VE Series ID Camera for Barcode  
VGA to 5 MP  
I/O: 6 Optically Isolated



## ABR 3000 SERIES READER

Reads a full library of 1D and 2D barcodes, including challenging low-contrast, DPM, damaged, distorted, and other difficult-to-read codes.



## ID 3000 SERIES READER

Adopts built-in deep learning algorithm to read codes with good robustness. Adopts IO interfaces for input and output signals.



## DATAMAN HAND-HELD READER

Modular Communications for Maximum Flexibility.  
Rugged Industrial Design.  
ESD-Safe Housing Options.  
Reads 1D and 2D Codes



# SAFETY PRODUCTS



TYPE 4  
SAFETY CURTAIN



TYPE 2  
SAFETY CURTAIN



SAFETY  
SCANNERS



SAFETY  
CONTROLLER



SAFETY  
RELAY



LOCKING  
SAFETY SWITCH



RFID  
SAFETY SWITCH



MAGNETIC  
SAFETY SWITCH



LIMIT  
SAFETY SWITCH



ROPE PULL  
SAFETY SWITCH



FLUSH/30MM MOUNT  
EMERGENCY STOP



PRESSURE  
SAFETY MAT



PANEL MOUNT  
EMERGENCY STOP



SAFETY  
TOUCH BUTTON



TWO HAND  
CONTROL RUN BAR



CRANE SENSOR  
ANTI-COLLISION



# PHOTOELECTRIC SENSORS



QS18 SERIES  
PHOTOELECTRIC SENSOR



Q20 SERIES  
PHOTOELECTRIC SENSOR



QS30 SERIES  
PHOTOELECTRIC SENSOR



T18-2 SERIES  
PHOTOELECTRIC SENSOR



Q2X SERIES  
MINIATURE SENSOR



Q45 SERIES  
RUGGED  
RECTANGLE SENSOR



S18-2 SERIES  
PHOTOELECTRIC SENSOR



M18-3 SERIES  
PHOTOELECTRIC SENSOR





**SB12T SERIES  
NARROW BEAM SENSOR**



**LASER EMITTER**



**DS18 SERIES  
WIDE BEAM SENSOR**



**Q40 SERIES  
HARSH ENVIRONMENT  
SENSOR**



**S30 SERIES  
PHOTOELECTRIC SENSOR**



**T8 SERIES  
SELF-CONTAINED  
SENSOR**



**Q26 SERIES  
CLEAR OBJECT SENSOR**



**QM42 / QMT42  
RECTANGULAR HOUSING  
SENSOR**



**DQ12 SERIES  
MINIATURE SENSOR**



**VS SERIES  
MINIATURE SENSOR**



**VSMQ SERIES  
SELF CONTAINED  
METAL SENSOR**



**VS2 SERIES  
ULTRA THIN  
MINIATURE SENSOR**



VSM-2 SERIES  
MINIATURE SENSOR



Q60 SERIES  
BACKGROUND SUPPRESSION  
SENSOR



SM312 SERIES  
MINI BEAM SENSOR



Q76E SERIES  
WIDE BEAM  
RETROREFLECTIVE SENSOR



B25 SERIES  
WIDE BEAM SENSOR





COTTON SENSOR



DUAL CROSS BEAM  
SENSOR



LASER DIFFUSE SCAN  
SENSOR



IR THROUGH BEAM  
SENSOR - RECTANGULAR  
4028



IR THROUGH BEAM  
SENSOR - M12



IR THROUGH BEAM  
SENSOR - M18



IR THROUGH BEAM  
SENSOR - RECTANGULAR  
5055



IR RETRO-REFLECTIVE  
SENSOR - RECTANGULAR  
5055



IR RETRO REFLECTIVE -  
DIA 30MM



IR RETRO REFLECTIVE -  
DIA 18MM



IR DIFFUSE SCAN  
SENSOR - VISIBLE LIGHT



IR DIFFUSE SCAN  
SENSOR - RECTANGLE  
4028



IR DIFFUSE MINIATURE -  
RECTANGLE 4028



IR DIFFUSE DIA M12 -  
3 WIRE



IR DIFFUSE DIA M30 -  
3 WIRE



IR DIFFUSE - RECTANGLE  
5055



IR DIFFUSE SCAN SENSOR  
- 2 WIRE AC



IR DIFFUSE DIA M18 -  
2 WIRE AC



IR DIFFUSE DIA M18 -  
3 WIRE



IR DIFFUSE DIA M18 -  
CONNECTOR



IR DIFFUSE DIA M18 -  
4 WIRE

 **ELECTRONIC SWITCHES**

 **UNSEEN  
ERA**



GLV SERIES DIFFUSE  
SENSOR



INDUCTIVE PROXIMITY  
SENSOR M8



INDUCTIVE PROXIMITY  
SENSOR M12



INDUCTIVE PROXIMITY  
SENSOR M18



INDUCTIVE PROXIMITY  
SENSOR M4



CAPACITIVE PROXIMITY  
SENSOR M30



INDUCTIVE PROXIMITY  
SENSOR - SQUARE



DIFFUSE SENSOR WITH  
INTENSITY DIFFERENCE



DIFFUSE SENSOR WITH  
BACKGROUND SUPPRESSION





**BRT-2X2**  
REFLECTOR 51MM X 51MM



**BRT-32X20AM**  
REFLECTOR 32MM X 20MM



**BRT-40X18A**  
REFLECTOR 40MM X 18MM



**BRT-84**  
REFLECTOR 84MM DIA



**BRT-THG-3X3-10**  
REFLECTOR TAPE  
75MM X 75MM (PACK OF 10)



**BRT-THG-2-100**  
REFLECTOR TAPE ROLL  
50MM X 2.5M LONG



**BRT-42D**  
REFLECTOR 42MM DIA



REFERENCE TARGET  
REFLECTORS





Q45UR SERIES REMOTE TRANSDUCER  
ULTRASONIC SENSOR  
UP TO 250MM RANGE



T30U SERIES  
UP TO 3M RANGE



S18U SERIES BARREL TYPE  
UP TO 300MM RANGE



QS18U SERIES  
UP TO 500MM RANGE



M25U SERIES  
STAINLESS STEEL IP69K  
UP TO 500MM RANGE



Q45U SERIES VERSATILE  
ULTRASONIC SENSOR  
UP TO 3M RANGE



T18U SERIES OPPOSED MODE  
UP TO 600MM RANGE



K50U SERIES WIRELESS  
UP TO 3M RANGE



## RADAR SENSORS IMPROVE RELIABILITY AND OPERATIONAL EFFICIENCY

On their own, radar sensors are a durable and reliable method for object and vehicle detection, collision avoidance, positioning feedback, tank level measurement, and more. They can do all of this either indoors or out, at short ranges or long distances, even when the environment presents unusual challenges that might trip up other sensor technology. But when incorporated as part of an automated system comprising sensing, real-time indication, and instant feedback, radar becomes an incredibly powerful—and necessary—component of a reliable and efficient operation.



# DISTANCE MEASUREMENT LASER SENSORS

Laser diode sensors combine the alignment advantages of a visible sensing beam with the increased sensing range of a laser. Devices are available with either Class 1 or Class 2 lasers.



**Q4X SERIES  
RUGGED LASER  
RANGE: UP TO 600MM**



**Q5X SERIES, HIGH POWER  
MULTI-FUNCTION  
RANGE: UP TO 10M**



**Q2X SERIES  
MINIATURE SENSOR  
RANGE: UP TO 3M**



**LM SERIES  
PRECISION MEASUREMENT  
RANGE: UP TO 150MM**



**LTF SERIES, LONG RANGE  
TIME-OF-FLIGHT LASER  
SENSOR, RANGE: UP TO 24M**



**Q5Z SERIES LASER  
MEASUREMENT SENSOR  
RANGE: UP TO 1800MM**



**LE SERIES  
LASER DISPLACEMENT  
RANGE: 1M**



**LT3 SERIES, TIME-OF-FLIGHT  
LASER SENSOR  
RANGE: 50M**



**LT7 SERIES, TIME-OF-FLIGHT  
LASER SENSOR  
RANGE: 250M**



# LABEL GAP SENSORS

Label sensors feature slots that are just wide enough for labels to pass through. They are designed to reliably detect either the labels or their backing for use in labelling equipment. These rugged, high-speed sensors have a response speed of up to 40µs (12.5 kHz switching frequency) for increased position accuracy.



# SLOT SENSORS

Slot sensors detect objects that pass between two arms—one with the emitter and the other with the receiver. The fixed slot width provides reliable opposed-mode sensing of objects as small as 0.30 mm. This makes slot sensors ideal for counting, sensing parts on conveyor rails and belts, detecting edges, and other applications.





SLM SERIES SLOT SENSOR  
SLOT WIDTH: 10 TO 220 MM





EE-SX670  
5MM SLOT




BUP SERIES  
30 & 50 MM SLOT SENSOR

IR SLOT SENSOR  
03MM TO 100MM



**ELECTRONIC SWITCHES**



EE-SX770  
THIN COMPACT 5MM SLOT




EE-SX951 THROUGH BEAM  
5MM SLOT

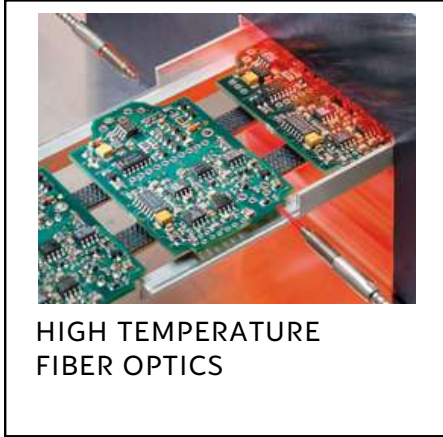
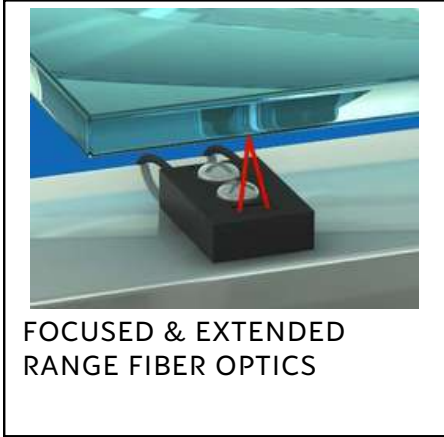
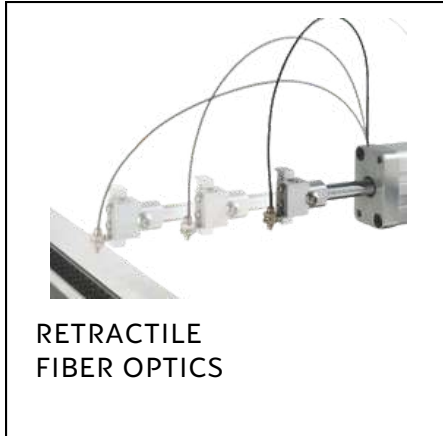
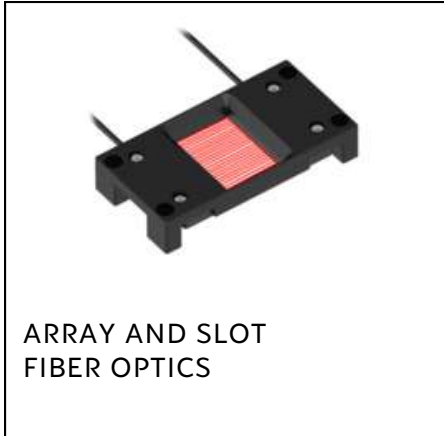
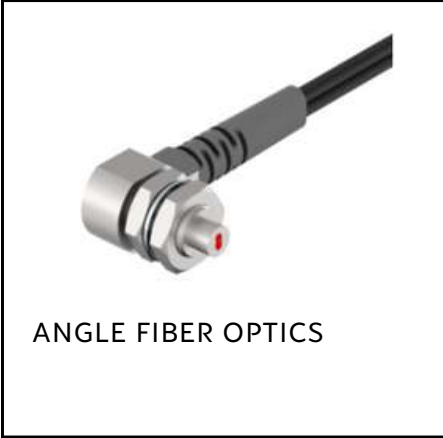


# REGISTRATION MARK, COLOUR SENSOR, LUMINESCENCE SENSOR

Registration mark sensors, also known as color contrast sensors, act as a color detector by identifying subtle color contrasts to inspect registration marks, using one, two or three color LEDs.



# FIBER OPTIC SENSORS



# FIBER OPTIC AMPLIFIERS



DF-G2 SERIES  
HIGH SPEED  
FIBER OPTIC AMPLIFIER



DF-G3 SERIES  
LONG RANGE  
FIBER OPTIC AMPLIFIER



DF-G1 SERIES  
GENERAL PURPOSE  
FIBER OPTIC AMPLIFIER



QS18 SERIES  
ALL PURPOSE  
FIBER OPTIC AMPLIFIER



MINI-BEAM  
FIBER OPTIC AMPLIFIER



D10 SERIES  
HIGH PERFORMANCE  
FIBER OPTIC SENSING



QM42 SERIES  
IP67 RATED  
FIBER OPTIC AMPLIFIER



Q45 SERIES  
RUGGED  
FIBER OPTIC AMPLIFIER



# **CONDITION MONITORING SENSORS**



**TEMPERATURE &  
VIBRATION SENSOR**



**Q45 ALL IN ONE  
FOR PREDICTIVE  
MAINTENANCE**



**Q45 NODES FOR  
PREDICTIVE  
MAINTENANCE**



**Q45  
PHOTOELECTRIC  
WIRELESS SENSOR**



**TEMPERATURE &  
HUMIDITY SENSOR**



**WIRELESS  
ULTRASONIC  
SENSOR**



**SUBMERSIBLE  
PRESSURE SENSOR**



**GPS RECEIVER**



**WIRELESS M-GAGE  
NODE**



**WIRELESS  
ULTRASONIC  
SENSOR NODE**



**CURRENT  
TRANSFORMERS**



**S24 DEW POINT  
SENSOR**



**ANALOG PRESSURE  
SENSORS**



**AC VOLTAGE  
SENSOR**



# INDUSTRIAL WIRELESS



**DXM CONTROLLER GATEWAYS**



**DXMR90 SERIES CONVERTERS**



**DXM1200 IIOT GATEWAY**



**PM SERIES WIRE REPLACEMENT**



**WIRELESS PERFORMANCE GATEWAY & NODE**



**MULTIHOP MODBUS I/O DATA RADIOS**



**ETHERNET DATA RADIOS**



**SERIAL DATA RADIOS**



**DIRECT SELECT MULTIFUNCTION WIRELESS INTERFACE**



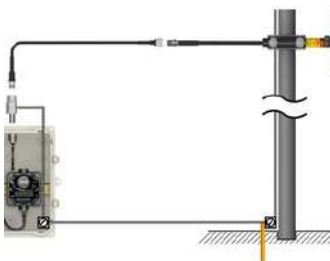
**WIRELESS Q120 BUTTON & LIGHT PENDANT**



**Q45 SWITCHES & PUSH BUTTON**



**WIRELESS ANTENNAS**



**WIRELESS ANTENNA CABLES**



# TOWER LIGHTS



**TL30  
BASIC SERIES**



**TL50 CORE SERIES  
50MM LED TOWER**



**TL50 PRO SERIES  
PROGRAMMABLE**



**TL50 PRO SELECT  
PROGRAMMABLE**



**TL50 ANDON  
TOWER LIGHT**



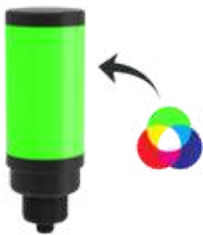
**TL70 PRO SERIES  
70MM**



**TL70 BASIC SERIES  
70MM**



**TL70 CORE SERIES  
70MM MODULAR &  
WIRELESS SERIES**



**CL50 PRO SERIES  
PROGRAMMABLE  
COLUMN LIGHT**



**CL50 CORE SERIES  
LED COLUMN LIGHT**



**TLF100 PRO  
FLUSH MOUNT**



**WLS27 PRO SERIES  
TOWER LIGHT**



**WLS27 CORE  
SERIES  
SEGMENTED**



**TL15 IN-LINE  
SERIES**



**STEP  
TOWER LIGHT**



**SIGNAL PANEL  
SERIES**

# INDICATOR LIGHTS



**K50  
PROGRAMMABLE**



**K30 PRO  
MULTICOLOR  
PROGRAMMABLE**



**K30 CORE  
GENERAL PURPOSE**



**K50 CORE  
GENERAL PURPOSE**



**K70 SERIES  
ILLUMINATED**



**K90 PRO SERIES**



**K100 BASIC  
BEACON SERIES**



**K100 PRO  
BEACON SERIES**



**K100 PRO  
HAZARDOUS  
BEACON**



**S22 PRO PANEL  
INDICATOR  
PROGRAMMABLE**



**S15L PRO SERIES**



**WLS15 PRO SERIES**



**WLS28 PRO  
LED STRIP LIGHT**



**RLS27 PRO RUGGED  
STRIP LIGHT**



**K50 PRO BEACON  
HIGH INTENSITY**



**S15L SERIES**



**RLS27 RUGGED STRIP LIGHT**



**WLS27 MULTICOLOUR STRIP LIGHT**



**WLS28-2 MULTICOLOUR STRIP LIGHT**



**HLS27 HAZARD INDICATOR**



**WLS15 DUAL COLOUR STRIP LIGHT**



**K90 SERIES DOMED INDICATORS**



**K50 BEACON HIGH INTENSITY INDICATORS**



**K50L DAYLIGHT VISIBLE INDICATOR**



**K80L SEGMENTED INDICATORS**



**K50FL FLAT MOUNT DOMED INDICATORS**



**K80FL FLAT MOUNT INDICATORS**



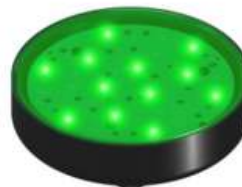
**K80L FLAT MOUNT DOMED INDICATORS**



**K80FDL DAYLIGHT VISIBLE INDICATORS**



**K80 SERIES CALL LIGHT**



**K90 SERIES DAYLIGHT VISIBLE INDICATORS**



**S18L BARREL MOUNT INDICATORS**



**S22 CORE SERIES  
PANEL MOUNT  
INDICATOR**



**SP SERIES  
SIGNAL LIGHTS**



**M18 SERIES, METAL  
GENERAL PURPOSE  
INDICATORS**



**WLS27 PRO SERIES  
LED STRIP LIGHT**



**GS60 PRO  
MULTICOLOUR  
GUIDE SPOT LIGHT**



**WLF12 FLEXIBLE  
STRIP LIGHT**



**WIRELESS K70  
SERIES INDICATOR**



**WIRELESS K70  
SERIES TOUCH  
BUTTONS**

# INDUSTRIAL LED TASK LIGHTING



**WLS28-2 LED LIGHT  
VERSATILE  
ALL-PURPOSE**



**WLB32 LED  
WORKSTATION  
LIGHT**



**WLS15 LOW  
PROFILE, LOW  
POWER LIGHT**



**WLR95 COMPACT  
AREA LIGHT**



**BL60 SEALED  
BAR LIGHT**



**WLS70 SEALED  
HIGH OUTPUT LED  
LIGHT**



**WLB72 SERIES  
HIGH OUTPUT LED  
LIGHT**



**WLS27  
SHATTERPROOF  
LIGHT**



**WLA SERIES LED  
AREA LIGHT**



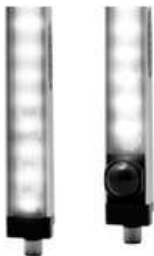
**FLEX ARM LIGHTS**



**GS60 GUIDE SPOT  
LIGHT**



**WL50 LED WORK  
LIGHT**



**HLS28 HAZARDOUS  
ENCLOSURE LED  
STRIP LIGHT**



**HLS27 BRIGHT LED  
LIGHT FOR  
HAZARDOUS  
LOCATIONS**



**WLB92 LARGE  
ULTRA-BRIGHT LED  
WORK LIGHT**



**WLH60 HIGH  
TEMPERATURE LED  
STRIP LIGHT**



**WLC90 HEAVY  
DUTY LED WORK  
LIGHT**



**WLC60 HEAVY  
DUTY LED STRIP  
LIGHT**



**WL50S SEALED LED  
SPOTLIGHT FOR  
TASK LIGHTING**

# DISPLAYS



1 INCH DISPLAY  
4/5/6 DIGIT



2 INCH DISPLAY  
4/5 DIGITS



4 INCH DISPLAY  
4/5/6 DIGITS



6 INCH DISPLAY  
4 DIGITS



8 INCH DISPLAY  
4 DIGITS



12 INCH DISPLAY  
4 DIGITS



2 INCH RPM / LINE  
SPEED DISPLAY  
4 DIGITS



DUAL DISPLAY  
COUNTERS



PRODUCTION  
COUNTERS



DIGITAL CLOCK  
WIFI / GPS BASED



PRESET UP TIMER



PRESET DOWN  
TIMER



THUMBWHEEL  
TIMER



SEQUENTIAL  
TIMER



HOUR METER / TIME  
TOTALISER



PROGRAMMABLE  
TIMER



- Multiple lengths available for purchase
- Choose from either straight or right-angle connectors
- M23, M12, and M8 models to fit application needs
- Models for both AC and DC powered devices

- Lighted models available for fast identification of power and output status
- L-Code models use larger pins to deliver 16 amps per pin for compact, high-power applications
- L-Code models available in 4- or 5-pin configurations



# CONTACT US

## Unseen Era Technologies Pvt Ltd

NH-22, Near Railway Crossing  
Pinjore-Kalka Road, Pinjore  
Haryana - 134102, INDIA

Phone: +91-7206865596  
Email: [info@unseenera.com](mailto:info@unseenera.com)  
Website: [www.UnseenEra.com](http://www.UnseenEra.com)

Since  
2010



## Unseen Era Industrial Equipments FZCO

Duqe Square Business Center, Quarter Deck  
Mina Rashid, Queen Elizabeth 2  
Dubai, United Arab Emirates (U.A.E.)

Phone: +971-522697872  
Email: [uae@unseenera.com](mailto:uae@unseenera.com)  
Website: [www.UnseenEra.ae](http://www.UnseenEra.ae)

Since  
2022



## Unseen Era Technologies HKG Limited

2/F, Tern Centre, Tower 1  
237 Queen's Road Central, Sheung Wan  
Hong Kong

Phone: +91-7206865596  
Email: [hkg@unseenera.com](mailto:hkg@unseenera.com)  
Website: [www.UnseenEra.com](http://www.UnseenEra.com)

Since  
2024

