

**M MELODY**  
Medisystem  
*Always with you...*

**Sales & Service of**  
medical equipment



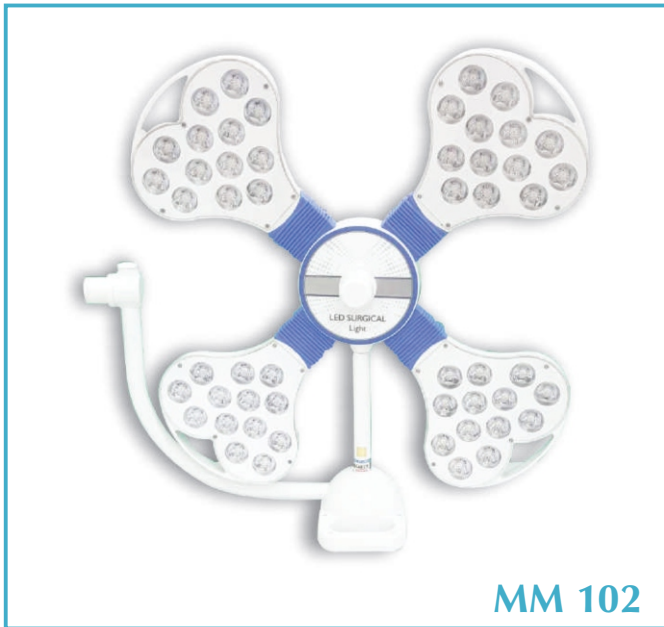
📍 32, Bhagvan nagar, B/H Magan nagar - 2, Katargam, Ved Road, Surat-395004, Gujarat.

☎ 9537966270, 9624258194 ✉ [melodymedisystem5@gmail.com](mailto:melodymedisystem5@gmail.com)

🌐 [www.melodymedisystem.com](http://www.melodymedisystem.com)



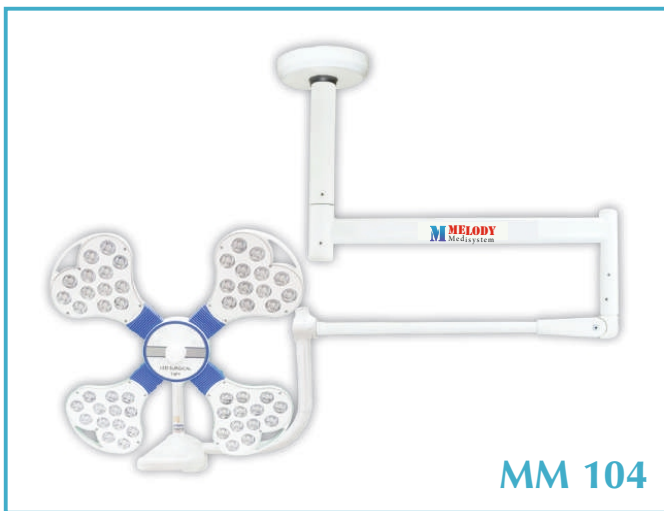
MM 101



MM 102



MM 103

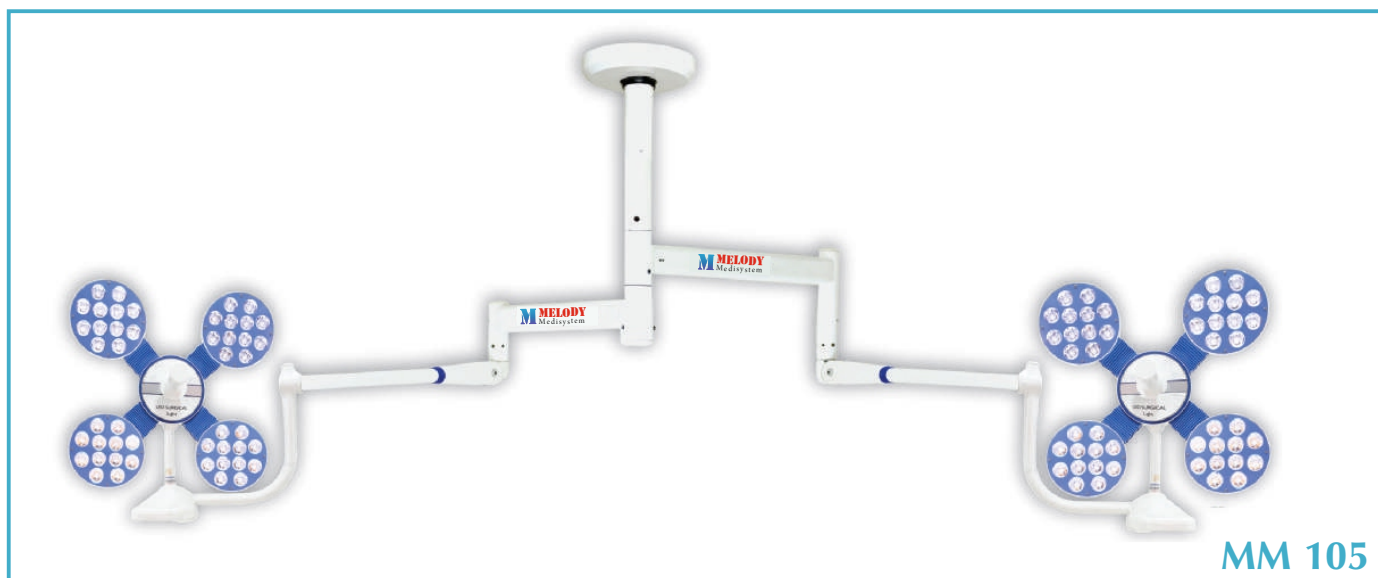


MM 104

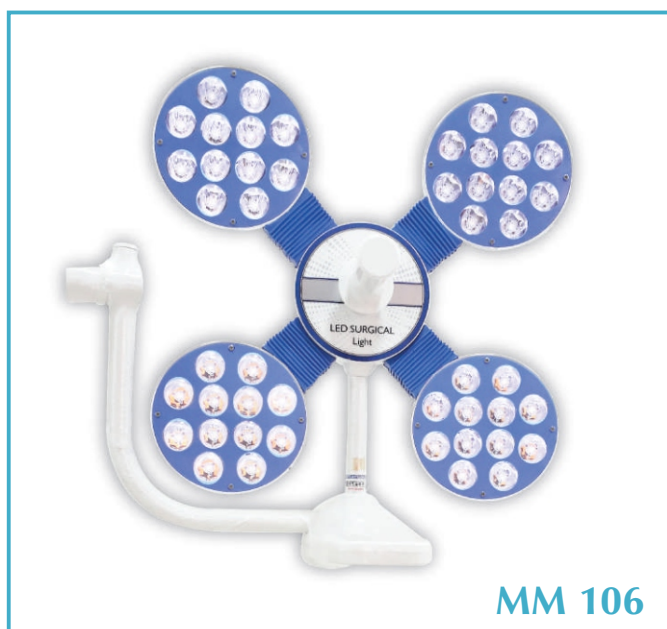
**TECHNICAL DATA**

Intensity	1,60,000 Lux
Spot diameter	100-150 mm
Depth illumination	10 - 15 cm
Colour temp.	3800-4800 K
Colour rendering index	93 Ra
Focusing	Manual
LED Average life	>50000 Hrs.
Number of led	52
Diameter of light	690mm
Intensity control	10 - 100 digital touch
Power supply	220V/50 Hz AC
Power consumption	55 Watt
Special function	Dual memory function





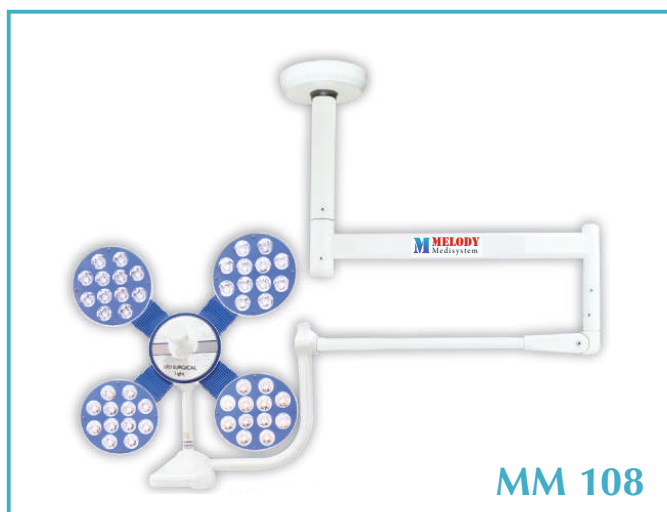
MM 105



MM 106



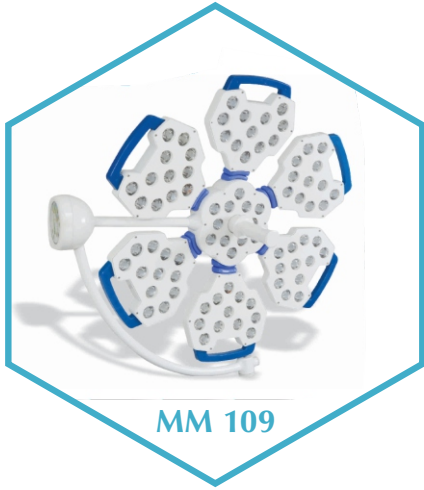
MM 107



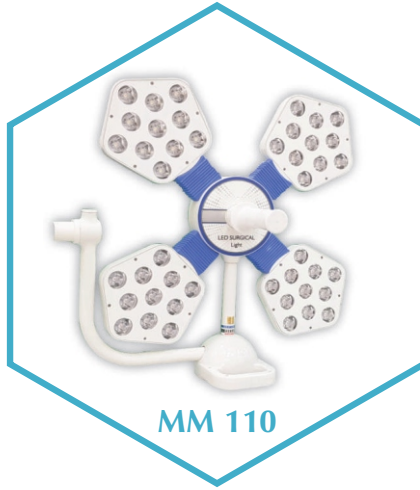
MM 108

**TECHNICAL DATA**

Intensity	1,50,000 Lux
Spot diameter	100-150 mm
Depth illumination	10 - 15 cm
Colour temp.	3800-4800 K
Colour rendering index	93 Ra
Focusing	Manual
LED Average life	>50000 Hrs.
Number of led	48
Diameter of light	600mm
Intensity control	10 - 100 digital touch
Power supply	220V/50 Hz AC
Power consumption	50 Watt
Special function	Dual memory function



MM 109



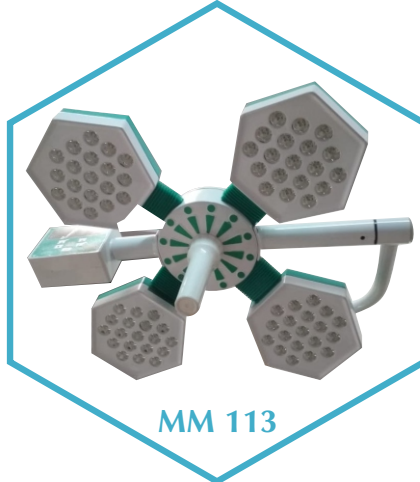
MM 110



MM 111



MM 112



MM 113



MM 114



MM 115



MM 116



MM 117

**TECHNICAL DATA**

Model no.	Intensity	No. of LED	Power consumption	Spot diameter	Colour temp.
MM109	2,00,000 Lux	84	80 Watt	100-150 mm	3800-4800 K
MM110	1,35,000 Lux	44	50 Watt	100-150 mm	3800-4800 K
MM111	1,25,000 Lux	39	50 Watt	100-150 mm	3800-4800 K
MM112	1,20,000 Lux	36	45 Watt	100-150 mm	3800-4800 K
MM113	1,60,000 Lux	76	40 Watt	100-165 mm	3000-6500 K
MM114	1,50,000 Lux	84	50 Watt	100-150 mm	3800-4800 K
MM115	1,60,000 Lux	72	50 Watt	100-150 mm	3800-4800 K
MM116	1,70,000 Lux	88	65 Watt	100-150 mm	3800-4800 K
MM117	50,000 Lux	12	12 Watt	100-150 mm	3800-4800 K





MM 118



MM 119



MM 120



MM 121



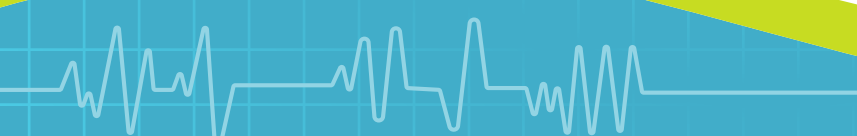
MM 122



MM 123

**TECHNICAL DATA**

Technical data	Model-MM118	Model-MM119	Model-MM121	Model-MM122
Room Height	10ft.	N.A.	10ft.	N.A.
Need Of Power	220v Ac	220v Ac	220v Ac	220v Ac
Halogen Bulb	24v-150w × 2 Bulb	24v-150w × 2 Bulb	24v-150w × 2 Bulb	24v-150w × 2 Bulb
Dome Dia.	20" Single Dome	20" Single Dome	20" Single Dome	20" Single Dome
Lux Intensity	50,000 Lux ± 10%	50,000 Lux ± 10%	90,000 Lux ± 10%	90,000 Lux ± 10%



# 250 Watt Cautery

## TECHNICAL DATA

Mode	Max.power
Pure cut	250w
Blend 1	200w
Blend 2	150w
Coagulation	125w
Bi-polar	50w



MM 124

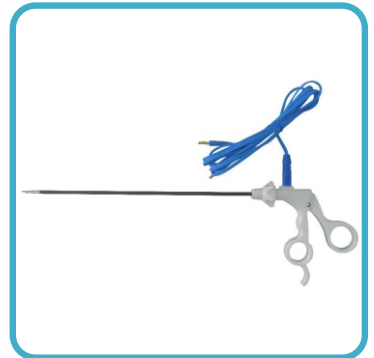
# 400 Watt Cautery



MM 125

## TECHNICAL DATA

	Cut	Coagulation	Bipolar (Simple 400w)		Bipolar (vessel sealer 400w)	
Pure cut	400w	Spray 120w	Micro	80w	Bi.cut	80w
Blend 1	250w	Force 120w	Macro	80w	Bi.coa.	80w
Blend 2	200w	Fulgurate 150w	Cut	100w	Auto	100w
Endocut	E 99w	Desiccate 150w	Auto	100w	Seal	150w





Hydraulic of Table

**TECHNICAL DATA**

Top dimension	L 1900mm x W 520mm
Height adjustment	762mm – 1000mm
Trendelenburg / reverse	30°/25°
Lateral tilt	20°/20°
Kidney elevator	150mm
Back rest (up/down)	80°/25°
Leg rest (up/down)	15°/90°
Head rest (up/down)	20°/60°
Patient weight capacity	200 kgs

MM 126



C arm compatible ortho attachment of table

**TECHNICAL DATA**

Length of table	1950mm
Width of table	525mm
Minimum height (without mattress)	Min. 750mm
Maximum height (without mattress)	Max.1000mm
Trendelenburg /reverse	25°/25°
Lateral tilt	± 20°
Back section	± 60°
Head section	± 60°
Leg section	0° - 90°

MM 127



Semi electric of table

**TECHNICAL DATA**

Length of table	1900mm
Width of table	520mm
Minimum height (without mattress)	Min. 750mm
Maximum height (without mattress)	Max.1000mm
Trendelenburg /reverse	25°/25°
Lateral tilt	± 20°
Back section	± 60°
Head section	± 60°
Leg section	0° - 90°
Floor locking system	Manual

MM 128



Electric ot table

**TECHNICAL DATA**

Top dimension	L 1900mm × W 520mm
Height adjustment	750mm – 1050mm
Trendelenburg / reverse	30°/25°
Lateral tilt	20°/20°
Kidney elevator	130 mm
Back rest (up/down)	80°/25°
Leg rest (up/down)	15°/90°
Head rest (up/down)	20°/60°
Power supply	24V DC
Battery backup	2-3 hours (optional)
Main voltage	AC 220V ± 10% 50Hz
Patient weight capacity	200 kgs

**MM 129**



Advance electric ot table

**TECHNICAL DATA**

Top dimension	L 1900mm × W 522mm
Height adjustment	750mm – 1000mm
Trendelenburg / reverse	30°/25°
Lateral tilt	20°/20°
Kidney elevator	130 mm
Back rest (up/down)	60°/25°
Leg rest (up/down)	15°/90°
Head rest (up/down)	20°/60°
Power supply	24V DC
Battery backup	2-3 hours (optional)
Main voltage	AC 220V ± 10% 50Hz
Patient weight capacity	200 kgs

**MM 130**



Ot Pendant

**MM 131**



Monitor Stand - 1

**MM 132**



Monitor Stand - 2

**MM 133**





MM 134



MM 135



MM 136



MM 137



MM 138



MM 139



MM 140



MM 141



MM 142

**FEATURE**

- 5 Standard Parameters: ECG, Resp, Nibp, Spo2, Temp.
- Real Time S-T Segment Analysis and ARR Analysis.
- Multi 7-Lead Ecg Waveforms Display In Phase And Capture Dynamic Waveforms.
- **Optional** : Printer, Ibp, Nellcore/Masimo Spo2, and Etco2.
- Up To 2 Hours Working Capacity of Built-In Rechargeable Battery.

**SPO2**

- **Measurement Range:** 0 - 100%.
- **Accuracy:** ±2% (70% - 100%), 0 - 69% Unspecified.
- **Alarm Range:** 0 ~ 100%
- **Pulse Rate Range:** 20 ~ 300 Bpm.

**NIBP**

- **Method:** Digital Automatic Oscillometric.
- **Operation Mode:** Manual/Automatic/Continuous.
- **Over-Pressure Protection:** Double Safety Protection.
- **Alarm:** Systolic, Diastolic, and Mean.

**TEMPERATURE**

- **Compatible Probe:** YSI or CYF.
- **Measurement Range:** 5 ~ 50°C.

**ECG**

- **ECG Lead Mode:** 5-Lead (R, L, F, N, C).
- **Waveform:** 3 And 7 Channel Selectable.
- **Heart Rate Range:** Adult-15 ~ 300bpm.

**RESPIRATION**

- **Method:** Thoracic Impedance between (RA-LL).
- **Measurement Range : Adult :** 7 ~ 120 rpm.  
**Neonate/Pediatric :** 7 ~ 150 rpm.





**TECHNICAL DATA**

- **Power Supply:** AC 220V,  $\pm 22V$ ,  $05 \pm 1$  Hz.
- **Max Negative Pressure:**  $>0.09$  Mpa.
- **Noise:**  $< 60$ db (A).
- **Input Power:**  $< 180VA$ .
- **Flow Rate:**  $> 20L/Min$ .
- **Jars Capacity:** 2500ML/Pc, 2 Pieces.

MM 143



MM 145



MM 146

**TECHNICAL DATA**

- **Power Supply:** AC 220V,  $\pm 22V$   $05 \pm 1$  Hz.
- **Max Negative Pressure:**  $>0.075$  Mpa.
- **Noise:**  $< 60$ db (A).
- **Input Power:**  $< 90VA$ .
- **Flow Rate:**  $> 18L/Min$ .
- **Jars Capacity:** 1000ML/Pc, 1 Piece.



**TECHNICAL DATA**

- **Motor Capacity:**  $\frac{1}{2}$  HP.
- **Max Vacuum:**  $700 \pm 10$  Mm/Hg.
- **Suction Capacity:** 40 Liters/Min.
- **Suction Bottle:**  $1600 \times 2$ .
- **Vacuum Pump:** Oil Pump.

MM 144



MM 147



MM 148

**SPECIFICATION**

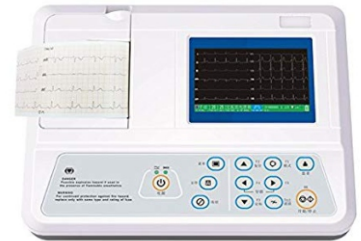
- Emergency Oxygen Flush & O2 Cutoff Alarm System.
- Oxygen Yokes for Cylinders.
- Antistatic Wheel Front with Fine Break.
- Drawer for Instrument.
- **Optional :** Jumbo Cylinder Attachment and Humidifier Bottle.
- **Cylinder Yokes :** Pin Index Yokes One Each Of Oxygen & Nitrous Oxide.
- High Efficiency Regulator For Reliability One Each Of Oxygen & Nitrous Oxide.



1 Channel ECG MM 149



3 Channel ECG MM 150



3 Channel ECG MM 151

**SPECIFICATION**

- High 3.5" TFT Color LCD Shows the Working Status and ECG Waveform.
- 12 Lead ECG Simultaneous Acquisition, Digital Signal Processor, To Get Higher Quality ECG Waveform Through The Ac Filter, Base Line Filter And EMG Filter Of The ECG Signal.
- Simultaneous Display Of 3/6/12 Leads ECG Waveform.
- Include Multiform Printing Modes and Format, Such As 4 × 3 + 1 (Rhythm), 3 × 2 +1, 2 × 3 + 2, 1 × 3 +2.
- The Power Supply Both AC/DC.
- It Has Built In Storage With Large Capacity.



6 Channel ECG

MM 152



12 Channel ECG

MM 153

**SPECIFICATION**

- 8" TFT Color LCD Display.
- AC + EMG + DFT Filter Process.
- Simultaneous 3/6/12 Lead ECG Waveform.
- **Patient Leak Current:** < 10µA.
- **Paper Speed:** Auto Record -25mm/s, 50mm/s, Error ± 5%.  
Rhythm Record - 25mm/s, 50mm/s, Error ± 5%.  
Manual Record - 5mm/s, 6.25mm/s, 10mm/s, 12.5mm/s, 25mm/s, 50mm/s, Error ±5%.
- **Sensitivity Selection:** 2.5, 5, 10, 20, 40mm/mv, Error ± 5%. Standard Sensitivity is 10mm/mv ± 0.2mm/mv.
- **Size:** 340mm (L) × 320mm (W) × 85mm (H).
- **Net Weight:** 3.2 Kg.





**SPECIFICATION**

- **Syringe:** 10, 20, 30, 50/60ml Standard with Automatic Detection.
- **Flow Rate Range:** 0.1 – 999.9ml/Hr (Depending On Syringe Size).
- **Alarms :** Occlusion, End Of Syringe, Low Battery, Syringe Displaced, No Syringe, Wrong Syringe, Pre Alarm For End, Target Volume, Target Time, Target Volume Pre Alarm, Mains Failure Alarm, Preventive Maintenance Alarm.
- **Battery Type:** Ni Mh, 12V/9.6V, 1300mAh.
- **Battery Back Up:** 5-6 Hrs @ 5ml/Hr. Or More If Specially Demanded.
- **Battery Recharging:** 20 Hrs. For Full Charging.

MM 154

**SPECIFICATION**

- **Alarm Indication:** Vein Blocks, Door Open, Battery Low, Target Volume, Target Time, Excess Flow, Less Flow.
- **Drop Rate Range:** 1-450 MI/Hr.
- **Volume Rate Range:** 1-450 MI/Hr.
- **Drop Rate Resolution:** 1 Drop/Min.
- **Volume Rate Resolution:** 1 MI/Hr.
- **Target Volume:** 1-540 MI.
- **Dimension:** 140mm (W) ×150mm (L) ×215mm (H).
- **Weight:** 3 Kg.



MM 155



MM 156



**SPECIFICATION**

- Mobile Radiant Heat Warmer Fixed Height.
- Head Up Variable Tilt Up To Three Inches And X- Ray Cassette Holder.
- Mattress Density Approx 21-25 Kg/M<sup>3</sup> and Removable Washable Water Proof Cover.
- 4mm Thick Transparent Acrylic Up Down Lockable Side Panel.
- Facility to Multiple Monitor Self and SS Multi Hook IV Stand.
- Skin and Manual Control Modes, Color Display, Baby Set Temperature in Celsius.
- Manual Mode with Timer. Also Led Light Low Temperature Indication Blue Color and High Temperature Indication Red Color.
- Patient Examination Switch For On and Off.
- Audio Alarm Mute Facility.





MM 157

**SPECIFICATION**

- LED Phototherapy To Provide Intense Blue Light For Effective Treatment Of Neonatal Hyperbilirubinaemia.
- Blue Light with the Pink Intensity at 455nm.
- The Light Is Free Of Unwanted UV And IR Radiation.
- Easy To Use.
- Treatment Timer.
- Faster Recovery Time.



MM 158



MM 159



MM 160

**SPECIFICATION**

- **Flow rate:** 0-5 L/Min., Purity: 93% ± 3%.
- **Outlet Pressure:** 0.04-0.07 Maps.
- **Sound Level :** < 50db.
- **Power:** AC220V ± 10%, 50/60 ± 1 Hz, < 480W.
- **Timer:** Accumulating Timing, Present Timing.
- **Alarm:** Power Failure, High & Low Pressure, High Temperature.
- **Net Weight:** 25kg.
- **Size:** 365mm (L) × 375mm (W) × 600mm (H).
- Adjustable Flow rate, Maintenance Reminding, Nebulizer, Spo2 (Optional).



**SPECIFICATION**

- **Motor:** 28000 Rpm.
- **Particle Size:** 5-15 Micron.
- **Speed and Reach:** 30-40 ft. Distance & 18-20 Ft. Height.
- **Space Treatment:** Approx. 8000 Sq. Ft.
- 5 Liter S.S. 304 Autoclavable Tank, With Timer.



MM 161



**SPECIFICATION**

- 8.4" Colorized LCD Large Screen.
- Three-In- One Probe, Reduce The Line Winding, Code-Operation, Easy And Convenient.
- 12 Hours Data & Waveform Storage and Review.
- Twins Monitoring Function Option.
- **Printing Width:** 112mm.
- **TOCO Rang:** 0-100 (Relative Unit).
- **Display:** FHR, TOCO, FM, Mark, Time, Freeze, Replay.
- **Power:** AC 220V, 50 Hz.
- **Dimension:** 320mm (L) × 260mm (W) × 80mm (H).
- **Net Weight:** 3.2 Kg.

MM 162

**SPECIFICATION**

- 7" Wide TFT Color LCD Display.
- Up To 150 Patients Data Saving.
- Fetal Heart Sound Play And Record In Pc.
- Rotation Screen.
- Waterproof Probe.
- GE/Philips Paper Compatible.
- Interpretation Function.
- Multiple Language Support.
- Twins Probe Available.
- **Power Consumption:** <20w.
- **Working Temperature:** 10-40 C, Relative Humidity 10-80%.
- **External Link:** RS-232C.
- **Trend:** USB Data Saving.



MM 163



Side Stream ETCO<sub>2</sub> Sensor MM 164



Main Stream ETCO<sub>2</sub> Sensor MM 165

**SPECIFICATION**

- **Transducer Type:** More Affordable and Economical Mainstream CO2 Sensor.
- **Emitting Device:** High Efficiency IR Source.
- **Energy Detecting Device:** Frequency Stable Thermopile.
- **CO2 Measurement Range:** Main Stream: 0 To 150mmhg, 0 To 19.7%, 0 To 20 Kpa.  
Side Stream: 0 to 152mmhg, 0 To 20%.
- **CO2 Accuracy:** ± 2% mmHg @ < 5.0% CO2 (At BTPS)/ < 10% of Reading @ > 5.0% CO2 (At BTPS).
- **Dimensions, Weight:** 50mm (L) × 22mm (H) × 36mm (W), < 40 G.
- **Respiration Rate Range:** 3 To 150 Breaths per Minute (IBPM).
- **Respiratory Rate Accuracy:** 1% of Reading.
- **Calibration:** No Routine User Calibration Required. An Airway Adapter Zero Is Required When Changing To A Different Style Of Airway Adapter.
- **Date Interface:** Highly Configurable Serial Digital Interface (TTL / RS232 Level).
- **Date Output:** CO2 Gas Concentration (mmHg), End-Tidal CO2, Inspired CO2, Respiratory Rate.
- **Input Voltage:** 5.0 VC ± 5%.
- **Operation Temperature:** 5°C to 55°C.



**SPECIFICATION**

- **LCD Display Size** : 45mm × 25mm Ultrasound.
- **Probe Solid Durable**, Anti-Shock, Anti-Falling Down.
- **Ultrasound Frequency**: 2/2.5/3 MHz ± 3%.
- **Measuring Range**: 50-240 BPM.
- **Ultrasound Intensity**: <2.5Mw/Cm.
- **Temperature**: 5°C - 40°C.
- **Rechargeable Ni-H Battery** (9v).
- **Size**: 135mm (L) × 95mm (W) × 35mm (H).
- **Weight**: 500gm (Including Battery).



MM 166



MM 167



MM 168

**SPECIFICATION**

- **Cuff Pressure**: 50 to 400mmhg.
- **Duration**: 0 To 299 Min.
- **Inflation**: Motorized Pump.
- **Pressure Resolution**: 2mmhg.
- **Accuracy**: ± 4mmhg.
- **Display**: Backlight LCD Type Display.
- **Operation Method**: Micro Controller Based Algorithm.
- **Display Time**: MM: SS.
- **Power Input**: AC 230V, 50/60Hz.
- **Cuff Type**: Silicon Autoclavable Cuff.
- **Cuff Size**: 12 × 86cm/12 × 48cm, 12 × 48cm/12 × 28cm, 6.5 × 21cm.
- **Weight**: 4 Kg Approx.
- **Dimension**: 225mm (L) × 200mm (W) × 90mm (H).



Simple Bed - 1

MM 169



Simple Bed - 2

MM 170



Simple Bed - 3

MM 171



Simple Bed - 4

MM 172





Semi Fowler 1

MM 173



Semi Fowler 2

MM 174



Semi Fowler 3

MM 175



Semi Fowler 4

MM 176



Fowler Bed - 1

MM 177



Fowler Bed - 2

MM 178



Fowler Bed - 3

MM 179



ICU Bed - 1

MM 180





ICU Bed 2

MM 181



Paediatric Bed

MM 182



Attendant Bed MM 183



Examination Table - 1 MM 184



Examination Table - 2 MM 185



Gynec examination table MM 186



Examination Couch MM 187



Labour Table MM 188



Fix Stretcher MM 189



Folding Stretcher MM 190



Canvas Stretcher MM 191







ECG trolley - 1 MM 204



ECG trolley - 2 MM 205



ECG trolley - 3 MM 206



Oxygen Cylinder trolley - 1 MM 207



Oxygen Cylinder trolley - 2 MM 208



Jumbo Cylinder trolley MM 209



Linen Drum trolley MM 210



Double linen trolley MM 211



Locker - 1 MM 212



Locker - 2 MM 213



Fix Wheel Chair MM 214



Folding Wheel Chair MM 215





Revolving stool - 1 MM 216



Revolving stool - 2 MM 217



Revolving stool - 3 MM 218



Commode stool MM 219



Commode Chair MM 220



Foot Step Single MM 221



Foot Step double MM 222



Over bed table - 1 MM 223



Over bed table - 2 MM 224



Saline Stand - 1 MM 225



Saline Stand - 2 MM 226



Waiting Chair MM 227





3 Fold screen MM 228



Baby cradel MM 229



Waker MM 230



Square stool MM 231



Surgeon chair MM 232



Wash basin stand MM 233



Autoclave - 1 MM 234



Autoclave - 2 MM 235



Autoclave - 3 MM 236



Autoclave drum MM 237



Autoclave Coil MM 238



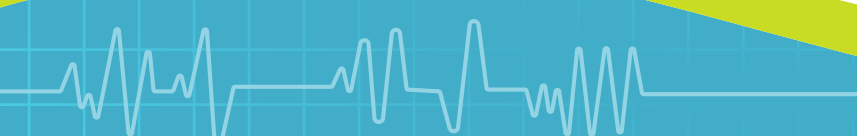
Autoclave Accessories MM 239



Fingertrip - 1 MM 240



Fingertrip - 2 MM 241





Fingertrip - 3 MM 242



BP Instrument - 1 MM 243



BP Instrument - 2 MM 244



BP Instrument - 3 MM 245



BP Instrument - 4 MM 246



Digital BP Instrument - 1 MM 247



Digital BP Instrument - 2 MM 248



Digital BP Instrument - 3 MM 249



Digital BP Instrument - 4 MM 250



Digital BP Instrument - 5 MM 251



Nebulizer - 1 MM 252



Nebulizer - 2 MM 253



Nebulizer - 3 MM 254



Nebulizer - 4 MM 255



Nebulizer - 5 MM 256



Glucometer - 1 MM 257





Glucometer - 2 MM 258



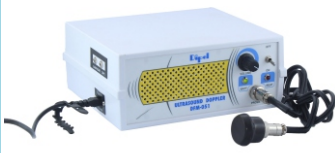
Glucometer - 3 MM 259



Doppler - 1 MM 260



Doppler - 2 MM 261



Doppler - 3 MM 262



Doppler - 4 MM 263



Doppler - 5 MM 264



Fumigator MM 265



Weight Scale - 1 MM 266



Weight Scale - 2 MM 267



Weight Scale - 3 MM 268



Weight Scale - 4 MM 269



Weight Scale - 5 MM 270



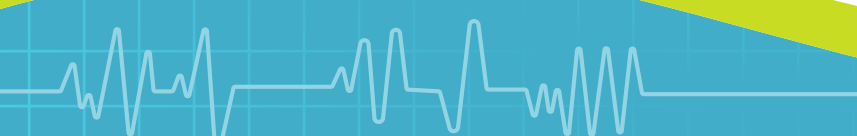
Weight Scale - 6 MM 271



Needle Cutter - 1 MM 272



Needle Cutter - 2 MM 273





Needle Cutter - 3 MM 274



Needle Cutter - 4 MM 275



Thermometer - 1 MM 276



Thermometer - 2 MM 277



Thermometer - 3 MM 278



Thermometer - 4 MM 279



Spot Light - 1 MM 280



Spot Light - 2 MM 281



Spot Light - 3 MM 282



Syringe Pump MM 283



Volumetric Pump MM 284



E.C.G. Cable MM 285



E.C.G. Electrode - 1 MM 286



E.C.G. Electrode - 2 MM 287



E.C.G. Gel MM 288



E.C.G. Paper MM 289





Stethoscope MM 290



Suction Jar MM 291



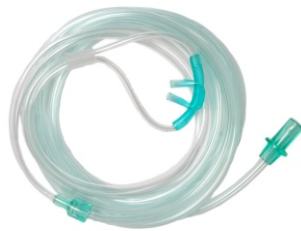
Vaccume Cup MM 292



Instrument tray MM 293



Oxygen Regulator MM 294



Nasal Cannula MM 295



Oxygen Hood MM 296



Touchn MM 297



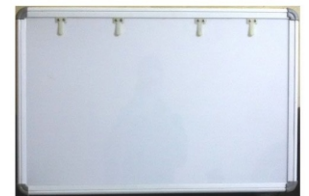
Ortho. Attachment MM 298



Neuro Attachment MM 299



X Ray - 1 MM 300



X Ray - 2 MM 301



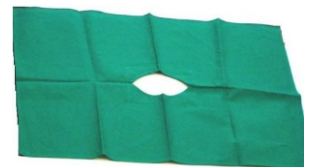
Fetal Probe - 1 MM 302



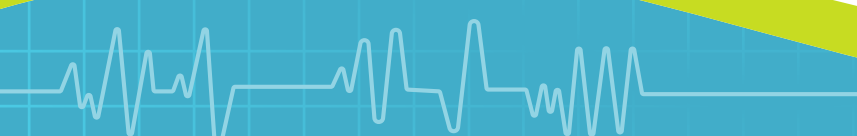
Fetal Probe - 2 MM 303



Hospital dress MM 304



Hole Sheet & Plain Sheet MM 305





SpO<sub>2</sub> Probe MM 306



All SpO<sub>2</sub> Probe MM 307



Temperature Probe MM 308



Formaline chamber MM 309



Cautery Accessories MM 310



Loproscopy Probe MM 311



Surgery Instrument MM 312



Bi - Clamp MM 313



Light Source MM 314



OFC Cable MM 315



NIBP tubing MM 316



BP Cuff MM 317



Air Bed MM 318



Bed Mattress MM 319

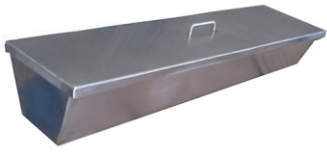


Ambus bag MM 320



Bone drill MM 321





Cidex tray MM 322



Humidifier Bottle MM 323



Height Meter MM 324



Instrument cup board MM 325



Laryngoscope MM 326



Otoscope MM 327



Massager MM 328



Ot Shoes MM 329



Ot table Mattress MM 330



Piercing Gun MM 331



Plaster Cutter MM 332



Pressure bag MM 333



All type Battery MM 334



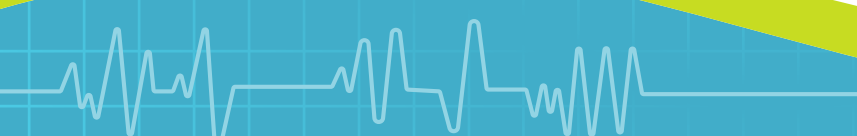
Medical Lamp MM 335



Trolley Wheel MM 336



All Type Connector MM 337



# M MELODY Medisystem

*Always with you...*

## OUR SERVICE CENTER & TEAM



**Melody Medisystem**

**Sales & Service Of Medical Equipment**

📍 32, Bhagvan nagar, B/H Magan nagar - 2, Katargam,  
Ved Road, Surat-395004, Gujarat.

☎ 9537966270, 9624258194

✉ [melodymedisystem5@gmail.com](mailto:melodymedisystem5@gmail.com)

🌐 [www.melodymedisystem.com](http://www.melodymedisystem.com)

