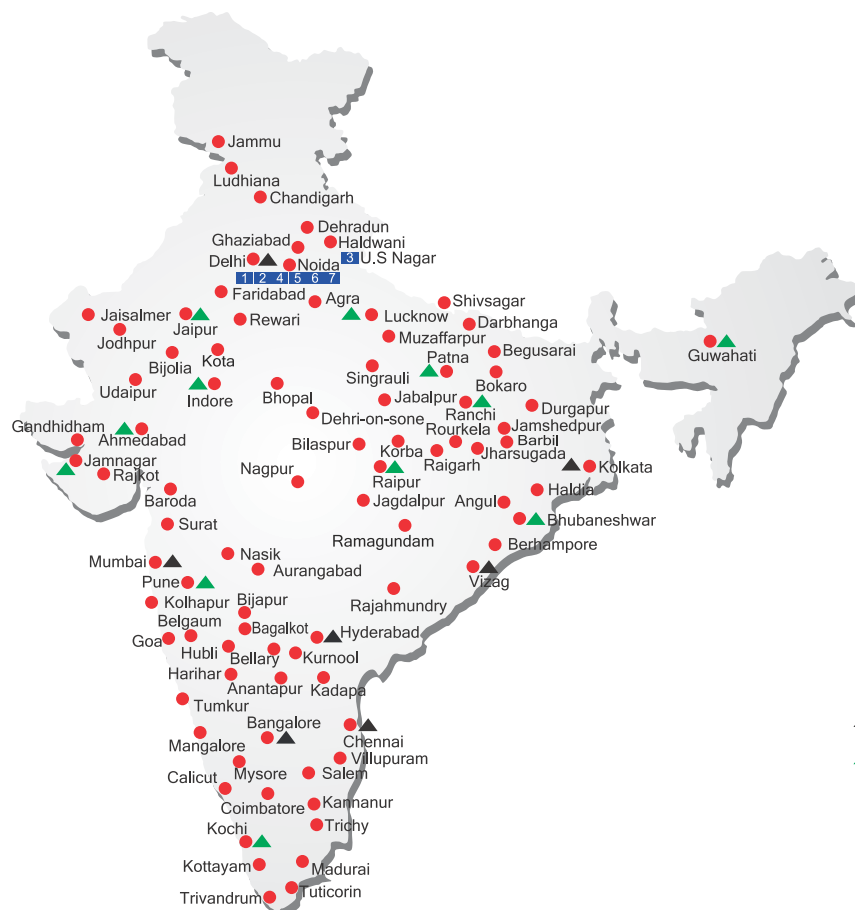


ALL INDIA NETWORK



SPARE PARTS & SERVICE

ACE has all India Sales and Service network operating out of all the major cities. These outlets are fully equipped to provide genuine spare parts and services by company trained engineers. These outlets are further supported by company officials based at Delhi, Mumbai, Chennai, Kolkatta, Ahmedabad, Surat, Pune, Jaipur, Chandigarh, Ranchi, Raipur, Indore, Bhubneshwar, Lucknow, Jamnagar, Hyderabad, Bangalore, Guwahati, Patna, Vizag & Cochin.

CUSTOMER CARE

TOLL FREE No

1800 1800 004

- WORKS
- ▲ REGIONAL OFFICES
- ▲ AREA OFFICES
- SALES AND SERVICE DEALERS

MARKETING H.Q.

4th Floor, Pinnacle, Suraj Kund, NCR-121009
E-mail: marketing@ace-cranes.com

REGISTERED OFFICE

Dudhola Link Road, Dudhola, Palwal-121102, Haryana
Ph.: +91-1275-280111, Fax: +91-1275-280133
CIN : L74899HR1995PLC053860

MUMBAI OFFICE

31, "Kalpataru Court", Chembur, Mumbai - 74
Ph.: +91-22-25206846, 25207070, Telefax: 25207071
E-mail: acemumbai@ace-cranes.com

KOLKATA OFFICE

"Forma Towers" 84-A, Second Floor, AJC Bose Road,
Kolkata - 14, Ph.: +91-33-65012050
E-mail: acekolkata@ace-cranes.com

CHENNAI OFFICE

1st Floor, "Alsa Regency", 165, Eldams Road,
Alwar Pet, Chennai - 18
Ph.: +91-44-24314253, Telefax: 24314252
E-mail: acechennai@ace-cranes.com

ACE

Action Construction Equipment Ltd.

Contact:



ACE reserves the right to alter any specifications without prior notice. Dimensions, weights & capacities mentioned herein are variable by ± 5%. Accessories if shown are not part of the Standard Equipment.



www.ace-cranes.com

ACE

F-160

Hydraulic Mobile Crane
Capacity : 16 tonnes
Engine Power : 101 bhp.

Rough terrain and rugged, 4x4 articulated NextGen pick 'n' move crane with front mounted cabin.

ACE INDIA'S NO. 1
MOBILE & TOWER CRANE CO.

- Front mounted ergonomically designed Cabin
- Improved kinematics with low Center of Gravity
- Slotted boom
- Self Adjusting hook block
- Fail safe air brakes
- Better creep speed
- Four wheel drive



Nothing beats an ACE



Specifications

F-160

LIFTING CAPACITY	16 Tonnes
ENGINE	TATA / Ashok Leyland (BS3 CEV), 4 Cylinder water cooled, Turbo charged and After Cooled engine
Max. Rating	101 HP (74.3 KW) at 2200 RPM
TRANSMISSION	Heavy Duty Synchromesh with 8 Forward and 2 reverse speeds with high low range selector.
Axles	Front axle is rigidly mounted on the chassis and Rear axle is mounted with 2 Nos. leaf Springs.
Drive	2 / 4 Wheel drive.
Clutch	Heavy Duty, single, dry friction type hydraulic clutch.
Top Speed	40 KMPH on even metaled Road (without load)
Gradeability	40 % (unladen)
STEERING	Hydraulically operated steering wheel with 45° Articulation on either side and turning radius of 7.5 Mtrs (approx) on outer rear wheels.
BRAKES	Pneumatically operated dual circuit brakes on Front and Rear wheels. Parking brake is pneumatically operated spring actuated fail safe type.
HYDRAULIC SYSTEM	<ul style="list-style-type: none">● Intra Vane type Main Pump. Three spools control valve with built in Relief Valve.● Suction line has 100 mesh size Strainer while return line is fitted with 25 micron full flow filter.● Two double acting lift cylinders, one double acting extension cylinder and two double acting steering cylinders.

TELESCOPIC BOOM	4 part slotted boom, 2 part hydraulically operated & synchronized and 4th part power extended
BOOM LUFFING Range	- 4° to + 64°
HOIST	Winch is driven by hydraulic motor and fitted with rope tensioner. Hoisting is provided through self adjusting hook block employing 4/6 falls of 13 mm dia rope
Hoist Speed	55 Mtr/Min (Line Speed)
ELECTRICAL SYSTEM	24v, Negative earth.
TYRES	11.00 x 20 - 16 PR (8 Nos.)
Wheel Base	3800 mm
Wheel Track	1825 mm
SAFETY	<ul style="list-style-type: none">● Hose Failure Protection● Audio Over hoisting Indication● Safety Brakes on Hoist● Self-Adjusting Hook Block● Front and rear wheel guards
STANDARD EQUIPMENT	<ul style="list-style-type: none">● ROPS fully enclosed wide view cabin.● Front and Rear work lights● Reflectors and rear view mirror● Tool kit.● Cabin Fan● Wiper Motor● Gauges :-<ul style="list-style-type: none">a) Water Temperature.b) Engine Oil Pressure.c) RPM meter cum hour recorder.d) Air Pressure● Rear view camera● Front Outriggers
OPTIONAL EQUIPMENT	<ul style="list-style-type: none">● Fly jib (1.25 Tonnes Max. Capacity)● Spark arrestor● Safe load indicator/ LMI● Over Hoist hydraulic cutoff● Fire extinguisher● Beacon Light● Cabin Front Glass Protector● Helper / Slinger Seat● Drag Winch
OPERATING WEIGHT	
Front axle	6035 Kgs.
Rear Axle	10200 Kgs.
Total Weight	16235 Kgs.

F-160



1 ROPS CABIN
Front mounted, ergonomically
designed Cabin for better visibility
and driveability.



2 GROUND CLEARANCE
High ground clearance of
300mm for easier rough
terrain operation.



3 OUTRIGGERS
Front Outriggers for
added safety during
high lift operations.



4 INCREASED VISIBILITY
Bigger size front windscreen
and re-routing of hoses provide
much better front
visibility.



5 ENGINE
Best in class TATA / Ashok Leyland
4 Cylinder engine having
nation wide service support
and spare parts availability.



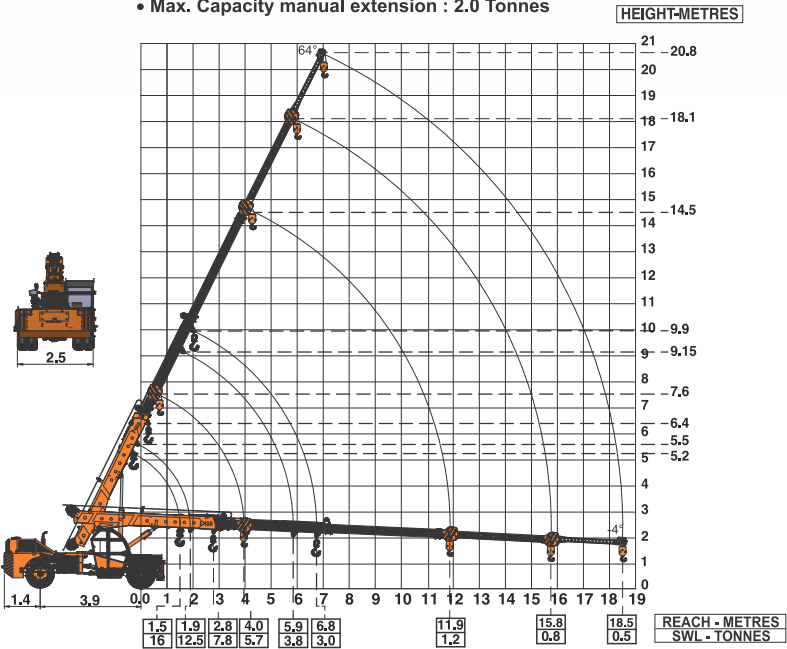
6 OPTIMIZED KINEMATICS AND
LOW C.G.
F-160 crane has been
evolved/ designed keeping in
mind operational safety parameters
with low Center of Gravity (C.G.)
providing best in class stability



7 EASY MAINTENANCE
The engine is easily accessible for
daily maintenance checks including
battery, air filter, oil dipstick and
cooling system

F-160 Crane with 4 part boom

- Max. Capacity Fly jib : 1.25 Tonnes
- Max. Capacity manual extension : 2.0 Tonnes



NOTE: • Rated loads are on the basis of operation on firm and level surface.
• Full rated lifting capacity available in articulated / steered condition.