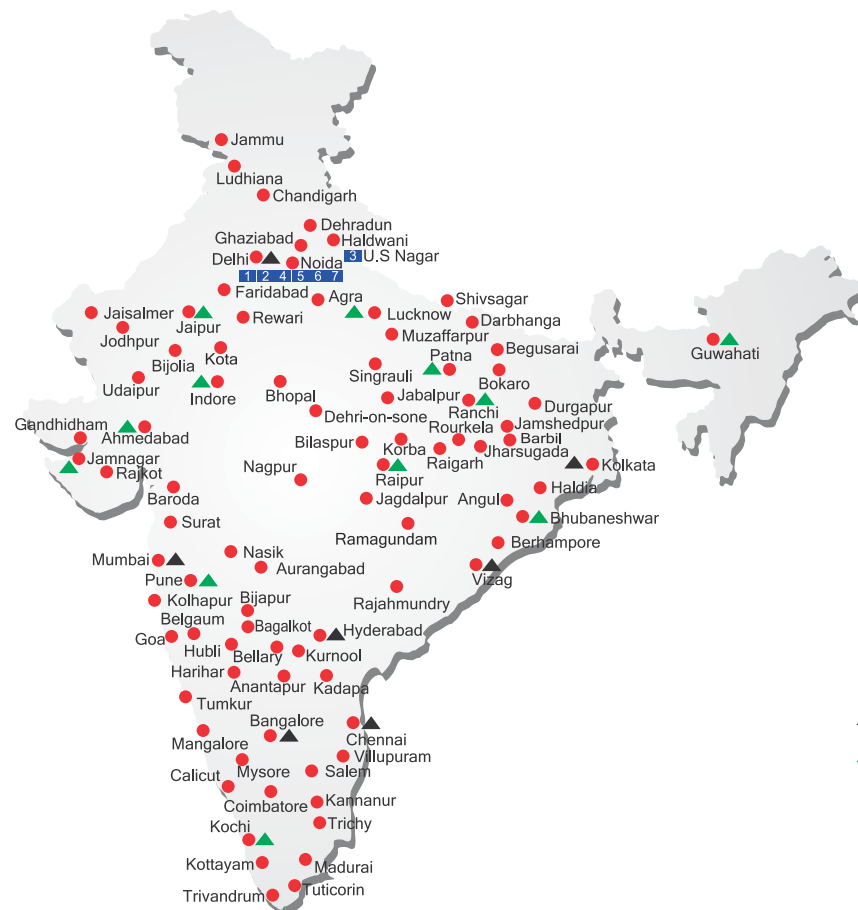


ALL INDIA NETWORK



SPARE PARTS & SERVICE

ACE has all India Sales and Service network operating out of all the major cities. These outlets are fully equipped to provide genuine spare parts and services by company trained engineers. These outlets are further supported by company officials based at Delhi, Mumbai, Chennai, Kolkata, Ahmedabad, Surat, Pune, Jaipur, Chandigarh, Ranchi, Raipur, Indore, Bhubneshwar, Lucknow, Jamnagar, Hyderabad, Bangalore, Guwahati, Patna, Vizag & Cochin.

CUSTOMER CARE

TOLL FREE No
1800 1800 004

- WORKS
- ▲ REGIONAL OFFICES
- ▲ AREA OFFICES
- SALES AND SERVICE DEALERS

MARKETING H.Q.

4th Floor, Pinnacle, Suraj Kund, NCR-121009
E-mail: marketing@ace-cranes.com

REGISTERED OFFICE

Dudhola Link Road, Dudhola, Palwal-121102, Haryana
Ph.: +91-1275-280111, Fax: +91-1275-280133
CIN : L74899HR1995PLC053860

MUMBAI OFFICE

31, "Kalpataru Court", Chembur, Mumbai - 74
Ph.: +91-22-25206846, 25207070, Telefax: 25207071
E-mail: acemumbai@ace-cranes.com

KOLKATA OFFICE

"Forma Towers" 84-A, Second Floor, AJC Bose Road,
Kolkata - 14, Ph.: +91-33-65012050
E-mail: acekolkata@ace-cranes.com

CHENNAI OFFICE

1st Floor, "Alsa Regency", 165, Eldams Road,
Alwar Pet, Chennai - 18
Ph.: +91-44-24314253, Telefax: 24314252
E-mail: acechennai@ace-cranes.com



ACE

Action Construction Equipment Ltd.

Contact:



ACE reserves the right to alter any specifications without prior notice. Dimensions, weights & capacities mentioned herein are variable by ± 5%. Accessories if shown are not part of the Standard Equipment.



www.ace-cranes.com

ACE

F-210

Hydraulic Mobile Crane Capacity : 20 tonnes

Rough terrain and rugged, 4x4 articulated NextGen pick 'n' move crane

ACE INDIA'S NO. 1
MOBILE & TOWER CRANE CO.



- 4 x 4 Drive
- Front mounted ergonomically designed Cabin
- Improved kinematics with low Center of Gravity
- Slotted boom
- Self Adjusting hook block
- Fail safe air brakes



Nothing beats an ACE

Specifications

F-210

LIFTING CAPACITY	20 Tonnes
ENGINE	Ashok leyland., 4 Cylinder, Water Cooled Diesel Engine
Rated Power	101 hp at 2200 RPM
TRANSMISSION	Heavy duty, synchromesh with 8 forward and 2 reverse speeds and hi-low drive selector for creep speed
Axles	Front axle is rigidly mounted on the chassis. Rear drive axle is mounted with 2 nos. Leaf springs.
Drive	2 / 4 Wheel drive.
Clutch	Heavy duty, single, dry friction type hydraulic clutch.
Top Speed	35 KMPH on even metaled Road (without load)
Gradeability	40 % (unladen)
STEERING	Full power orbital with twin hydraulic double acting cylinders and 40° articulation on either side
Turning Radius	7.6 Mtrs. on outer rear wheels.
BRAKES	<ul style="list-style-type: none"> • Dual Circuit Brakes • Fully Pneumatic brakes on front and rear wheels. • Parking brake is pneumatically operated, fail safe type
HYDRAULIC SYSTEM	<ul style="list-style-type: none"> • Gear/Intra Vane type main pump • Five spools control valve with built in Relief Valve (Heavy duty) • Suction line has 100 mesh size strainer while return line is fitted with 25 micron full flow filter. • Two double acting lift cylinders, two double acting steering cylinders and one double acting extension cylinder.
TELESCOPIC BOOM	4 part slotted boom, 2 part hydraulically operated & synchronized and 4th part power extended
BOOM LUFFING Range	-10° to + 65°

HOIST	3.5 Tonnes Line Pull Winch is driven by hydraulic motor and fitted with rope tensioner. Hoisting is provided through self adjusting hook block employing 6 falls of 13mm dia. Rope.
Hoist Speed	55 Mtrs./Min (Line Speed)
ELECTRICAL SYSTEM	24v, Negative earth.
TYRES	Front 12.00x20-18 PR (4 NOS.) Rear 12.00x20-18 PR (4 NOS.) Wheel Base 4300 mm Wheel Track 1840 mm
SAFETY	<ul style="list-style-type: none"> • Hose failure protection • Audio over hoisting Indication • Safety brakes on hoist • Self-adjusting hook block • Front and rear wheel guards
STANDARD EQUIPMENT	<ul style="list-style-type: none"> • Front Outriggers • ROPS fully enclosed wide view cabin • Rear View Camera • Front and rear work lights • Reflectors & rear view mirrors • Tool Kit • Cabin fan • Wiper Motor • Gauges : <ul style="list-style-type: none"> a) Water Temperature. b) Engine Oil Pressure. c) Fuel Gauge d) RPM meter cum hour recorder e) Air Pressure Gauge f) Speedometer
OPTIONAL EQUIPMENT	<ul style="list-style-type: none"> • Flyjib (Max Capacity : 1.25 Tonnes) • Spark arrestor • Safe load indicator/ LMI • Over Hoist hydraulic cutoff • Fire Extinguisher • Beacon rotating light • Drag Winch • Front and side Proximity Sensors • Cabin front glass protector • Helper/Slinger Seat • 3 part slotted boom -12.1 mtrs. height
OPERATING WEIGHT	9655 Kgs.
Front axle	10200 Kgs.
Rear Axle	19855 Kgs.
Total Weight	

4x4



1 ROPS CABIN
Front mounted, ergonomically designed Cabin for better visibility and driveability.



2 GROUND CLEARANCE
High ground clearance of 300mm for easier rough terrain operation.



3 OUTRIGGERS
Front Outriggers for added safety during high lift operations.



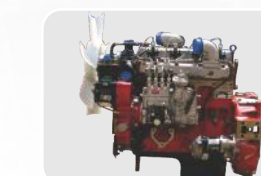
4 OPTIMIZED KINEMATICS AND LOW C.G.
F-210 crane has been designed keeping in mind operational safety parameters with low Center of Gravity (C.G.) providing best in class stability



5 EASY MAINTENANCE
The engine is easily accessible for daily maintenance checks including battery, air filter, oil dipstick and cooling system

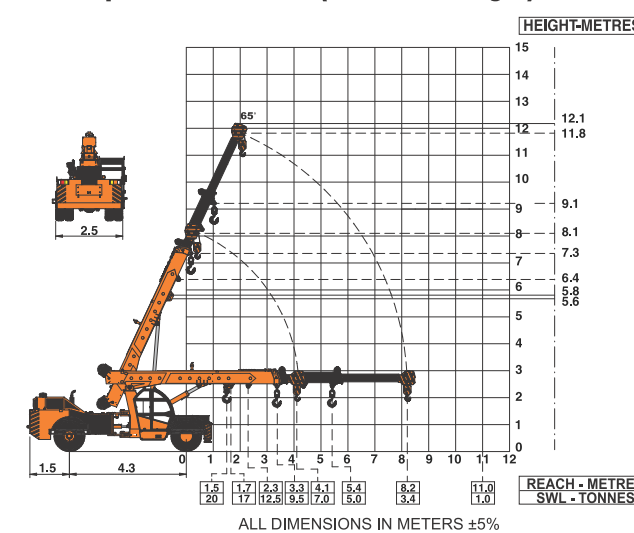


6 INCREASED VISIBILITY
Bigger size front windshield provides better visibility.



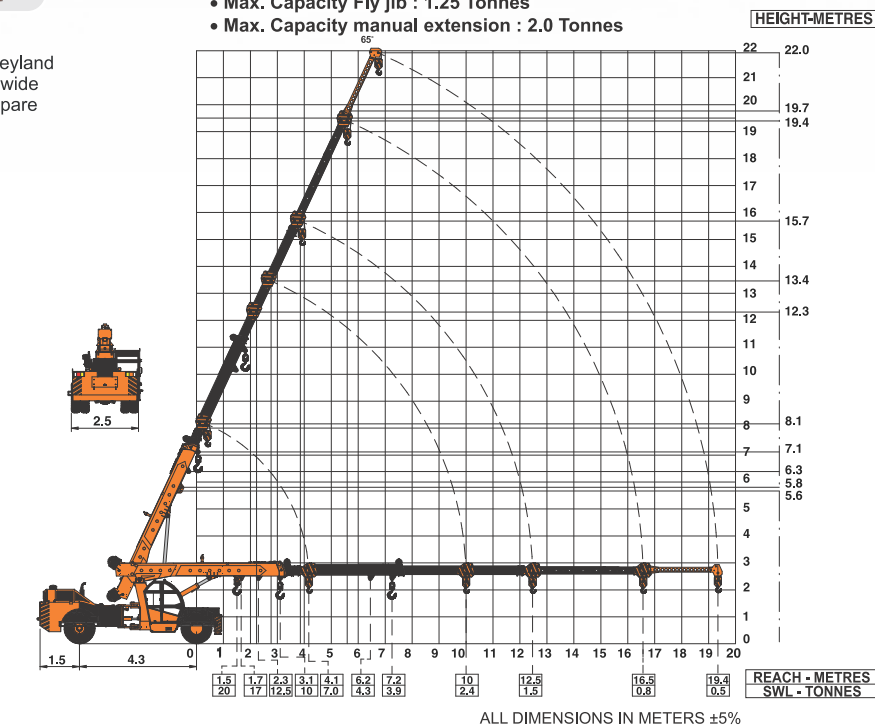
7 ENGINE
Best in class Ashok Leyland engine having nation wide service support and spare parts availability.

ACE F210 Model Crane fitted with 3 part slotted boom (12.1 mtrs. height)



ACE F210 Model Crane fitted with 3 part slotted boom + 1 Manual (19.7 mtrs. height)

- Max. Capacity Fly jib : 1.25 Tonnes
- Max. Capacity manual extension : 2.0 Tonnes



NOTE: • Rated loads are on the basis of operation on firm and level surface.
• Full rated lifting capacity available in articulated / steered condition.