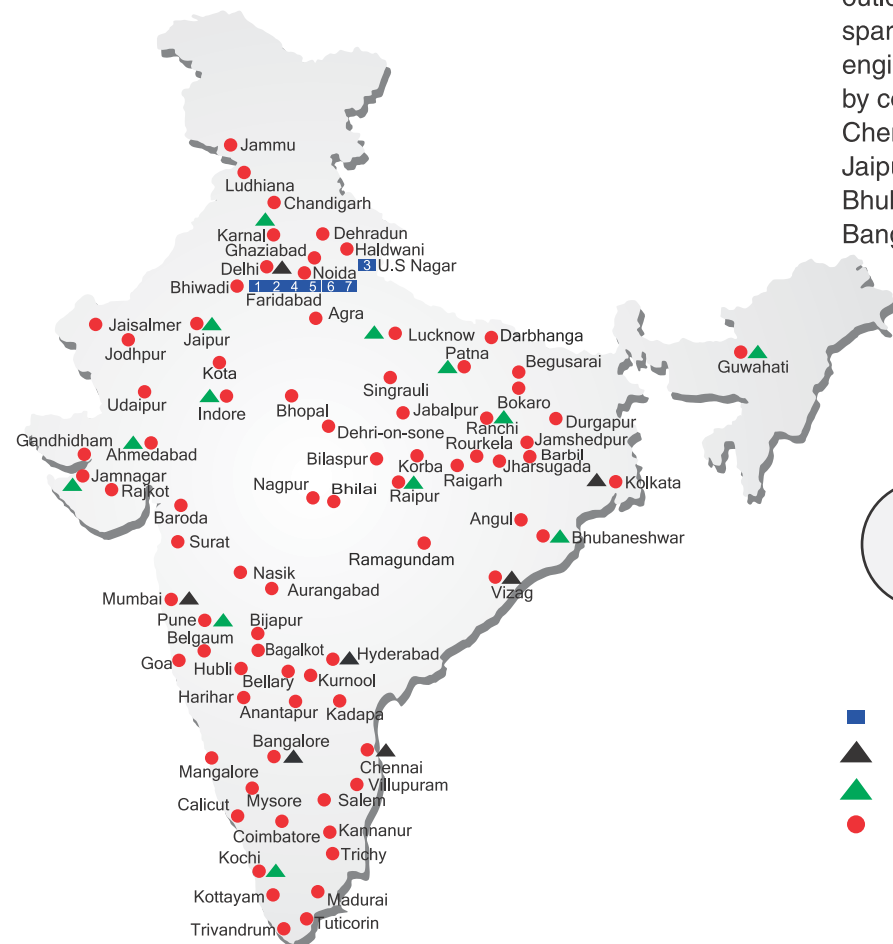


## ALL INDIA NETWORK



### SPARE PARTS & SERVICE

ACE has all India Sales and Service network operating out of all the major cities. These outlets are fully equipped to provide genuine spare parts and services by company trained engineers. These outlets are further supported by company officials based at Delhi, Mumbai, Chennai, Kolkatta, Ahmedabad, Surat, Pune, Jaipur, Chandigarh, Ranchi, Raipur, Indore, Bhubneshwar, Lucknow, Jamnagar, Hyderabad, Bangalore, Guwahati, Patna, Vizag & Cochin.

**CUSTOMER CARE**  
TOLL FREE No  
**1800 1800 004**

- WORKS
- ▲ REGIONAL OFFICES
- ▲ AREA OFFICES
- SALES AND SERVICE DEALERS

### MARKETING H.Q.

5th Floor, "TDI Center", Jasola, New Delhi - 25  
Ph.: +91-11-40549900 (30 Lines), Fax: 40549922  
E-mail: marketing@ace-cranes.com, works@ace-cranes.com

### REGISTERED OFFICE

Dudhola Link Road, Dudhola, Palwal-121102, Haryana  
Ph.: +91-1275-280111, Fax: +91-1275-280133  
CIN : L74899HR1995PLC053860

### MUMBAI OFFICE

31, "Kalpataru Court", Chembur, Mumbai - 74  
Ph.: +91-22-25206846, 25207070, Telefax: 25207071  
E-mail: acemumbai@ace-cranes.com

### KOLKATA OFFICE

"Forma Towers" 84-A, Second Floor, AJC Bose Road, Kolkata - 14. Ph.: +91-33-65012050  
E-mail: acekolkata@ace-cranes.com

### CHENNAI OFFICE

1st Floor, "Alsa Regency", 165, Eldams Road, Alwar Pet, Chennai - 18  
Ph.: +91-44-24314253, Telefax: 24314252  
E-mail: acechennai@ace-cranes.com



# ACE

**Action Construction Equipment Ltd.**

Contact:



ACE reserves the right to alter any specifications without prior notice. Dimensions, weights & capacities mentioned herein are variable by ± 5%. Accessories if shown are not part of the Standard Equipment.



www.ace-cranes.com

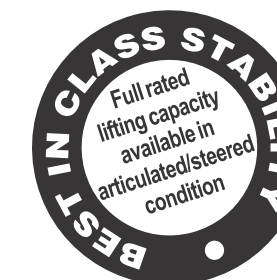
# ACE

# SX 170

**Nextgen Hydraulic Mobile Crane Capacity : 16 tonnes**

Rough terrain and rugged articulated new generation pick n move crane.

**ACE INDIA'S NO. 1 MOBILE & TOWER CRANE CO.**



- Front Outriggers
- Ergonomically designed front mounted cabin
- Improved kinematics
- Slotted boom
- Self Adjusting hook block
- Better visibility
- Air brakes
- Better creep speed

*Nothing beats an ACE*







## Specifications

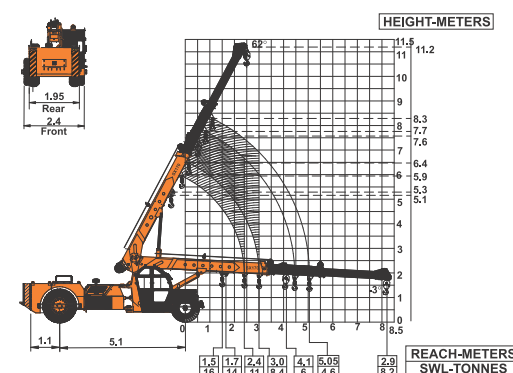
## SX170

<b>LIFTING CAPACITY</b> (Free on wheels)	16 Tonnes
<b>ENGINE</b>	KOEL 4R810 NA (BS-III), 4 Cylinder Water Cooled Engine or suitable engine
Rated Power	49.5 BHP (36.41 KW) AT 2200 RPM
<b>ELECTRICAL SYSTEM</b>	12V, Negative earth with 35 Amp. Alternator & 75 amp. hr. battery
<b>STEERING</b>	Power steering through orbitrol with twin hydraulic double acting cylinders having 45° articulation on either side.
<b>HYDRAULIC SYSTEM</b>	<ul style="list-style-type: none"> <li>● Gear / Intra Vane type Main Pump.</li> <li>● Three spools control valve with built in Relief valve.</li> <li>● Suction line has 100 mesh size Strainer while return line is fitted with 25 micron full flow filter.</li> <li>● Two double acting lift cylinders, two double acting steering cylinders and one double acting extension cylinder.</li> </ul>
<b>TRANSMISSION</b>	Heavy Duty, sliding mesh with 6 forward and 2 reverse speeds with high low range selector.
Clutch	Hydraulically operated, heavy duty, dry friction, cerametallic clutch plate with diaphragm type pressure plate
Top Speed	29 KMPH without load
<b>BRAKES</b>	
Service	<ul style="list-style-type: none"> <li>● Fully air operated S Cam dual brakes on front wheels and air operated disc brakes on rear wheels. Brakes are actuated through a single pedal.</li> </ul>
Parking	<ul style="list-style-type: none"> <li>● Pneumatically operated fail safe type</li> </ul>
<b>TELESCOPIC BOOM</b>	Three part slotted boom with hydraulically operated synchronized extensions (11.2 mtrs height).
<b>BOOM LUFFING</b>	
Range	-3° TO + 62°
<b>FLUID CAPACITIES</b>	
Engine	8.00 Ltrs.
Fuel Tank	120.00 Ltrs
Hydraulic Tank	125.00 Ltrs.
Transmission	57.00 Ltrs.

NOTE: • All above specifications are pertaining to SX170 model fitted with 11.2 Mtrs. boom.  
• Rated loads are on the basis of operation on firm and level surface.

<b>TYRES</b>	
Front	12.00 x 20 – 18 PR (4Nos.)
Rear	14.00 x 25 – 20 PR (2 Nos.)
<b>SAFETY</b>	<ul style="list-style-type: none"> <li>● Hose failure protection.</li> <li>● Audio over hoisting indication</li> <li>● Safety brakes on hoist.</li> <li>● Self-adjusting hook block.</li> <li>● Front and rear tyre guard(s)</li> </ul>
<b>HOIST</b>	Winch is driven by hydraulic motor and fitted with rope tensioner. Hoisting is provided through self adjusting hook block employing 4 falls of 13 mm dia rope
Hoist Speed	50 Mtrs./Min. (Line Speed)
<b>STANDARD EQUIPMENT</b>	<ul style="list-style-type: none"> <li>● Front Outriggers</li> <li>● ROPS fully enclosed wide view front mounted cabin</li> <li>● Front and Rear work lights</li> <li>● Reflectors and rear view mirror</li> <li>● Tool kit</li> <li>● Cabin Fan</li> <li>● Front Tyre Protector</li> <li>● Helper / Slinger Seat(s)</li> <li>● Rear view camera with LCD display</li> <li>● Gauges :- <ul style="list-style-type: none"> <li>a) Water Temperature</li> <li>b) Engine Oil Pressure</li> <li>c) Fuel Gauge</li> <li>d) RPM meter cum hour recorder</li> <li>e) Air pressure</li> </ul> </li> </ul>
<b>OPTIONAL EQUIPMENT</b>	<ul style="list-style-type: none"> <li>● Fly jib (Max Capacity : 1.25 Tonnes)</li> <li>● Spark arrestor</li> <li>● Safe load indicator/ LMI</li> <li>● Over Hoist hydraulic cutoff</li> <li>● Fire extinguisher</li> <li>● Beacon Light</li> <li>● 4 part slotted boom, 3 part hydraulically operated &amp; synchronized and 4th part power extended (15.5m &amp; 18.2m height)</li> <li>● High torque 60 bhp engine</li> <li>● Drag winch</li> <li>● Cabin front glass protector</li> <li>● Front &amp; side proximity sensors</li> </ul>
<b>OPERATING WEIGHT</b>	14900 Kgs

ACE SX170 Model Crane fitted with 3 Part slotted boom (11.2 Mtrs. height)



Full rated lifting capacity available in articulated / steered condition.



**1 CABIN**  
Front mounted, ergonomically designed spacious Cabin for better visibility & driveability.



**2 SLOTTED BOOM**  
Facilitates easier load positioning & fitted with self adjusting hook block.



**3 STABLE DESIGN**  
3 Point Oscillation Joint provides for safer and stable operation.



**4 INCREASED VISIBILITY**  
Bigger size front windscreen provided for better visibility and safe operation.



**5 REAR DECK**  
Spacious & well laid out rear deck for storing lifting tackles etc. and provides ample space for slingers/helpers.



**6 GROUND CLEARANCE**  
Ground clearance of 300mm facilitates easier rough terrain operations.



**7 STEERING WHEEL & CONTROLS**  
Steering wheel is provided as a standard fitment, which along with ergonomically placed operator console and instrument cluster ensures ease of operation.



**8 OPTIMIZED KINEMATICS AND LOW C.G.**  
SX170 crane has been designed with low Center of Gravity (C.G.) providing best in class stability and operational safety



**9 EASY MAINTENANCE**  
The engine is easily accessible for daily maintenance checks including battery, air filter, oil level and cooling system.

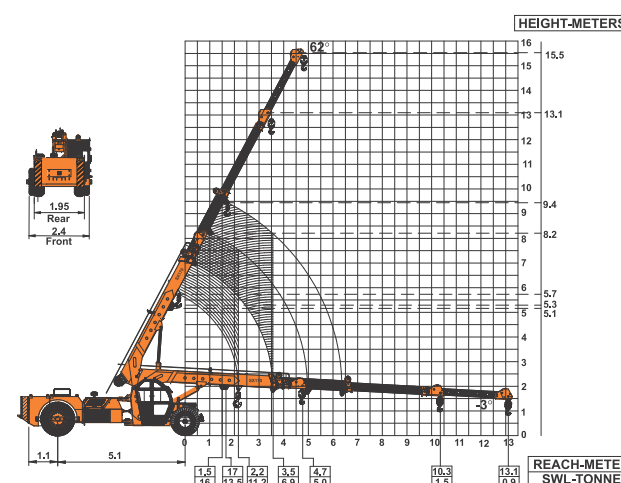


**10 FRONT OUTRIGGERS**  
Front Outriggers are provided as standard fitment for added safety during high lift operations.

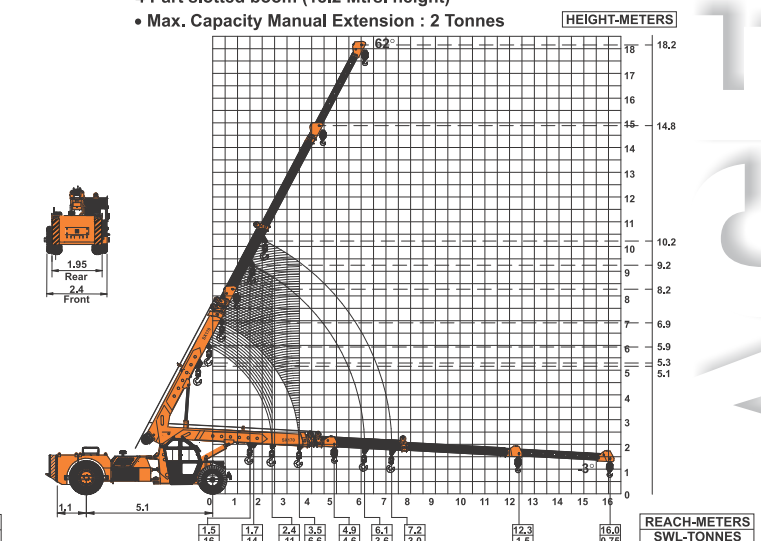


ACE SX170 Model Crane fitted with 4 Part slotted boom (15.5 Mtrs. height)  
• Max. Capacity Manual Extension : 2 Tonnes

ACE SX170 Model Crane fitted with 4 Part slotted boom (18.2 Mtrs. height)  
• Max. Capacity Manual Extension : 2 Tonnes



Full rated lifting capacity available in articulated / steered condition.



Full rated lifting capacity available in articulated / steered condition.

ADVANTAGES