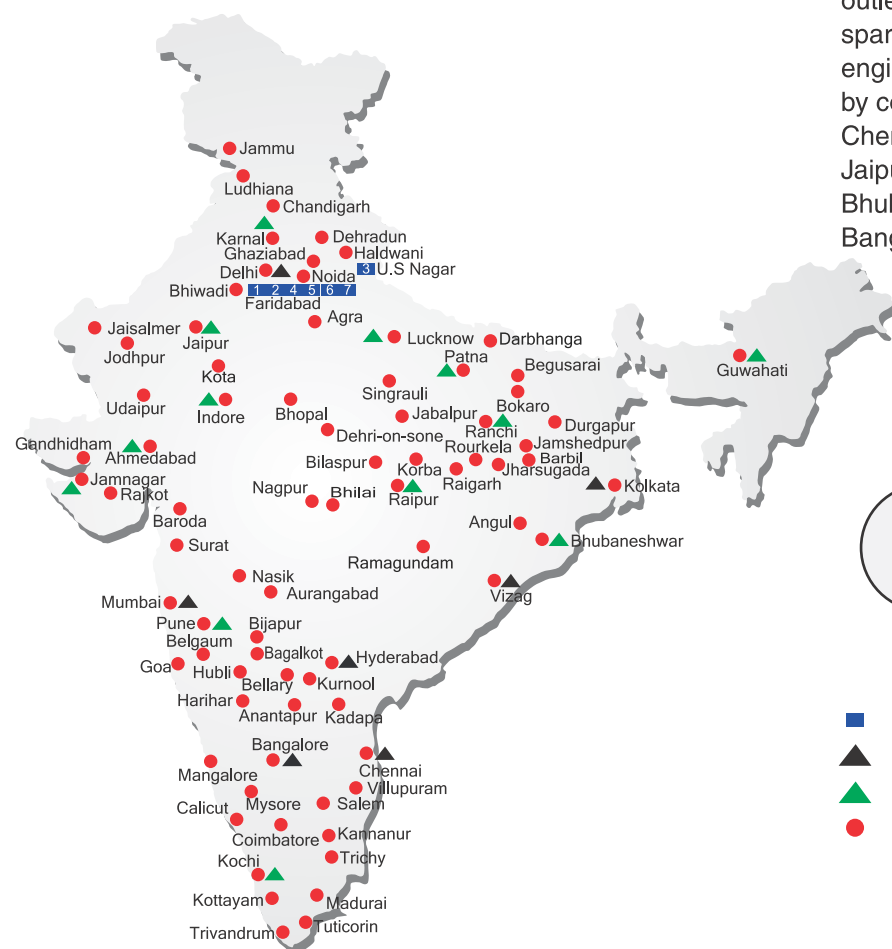


## ALL INDIA NETWORK



### SPARE PARTS & SERVICE

ACE has all India Sales and Service network operating out of all the major cities. These outlets are fully equipped to provide genuine spare parts and services by company trained engineers. These outlets are further supported by company officials based at Delhi, Mumbai, Chennai, Kolkatta, Ahmedabad, Surat, Pune, Jaipur, Chandigarh, Ranchi, Raipur, Indore, Bhubneshwar, Lucknow, Jamnagar, Hyderabad, Bangalore, Guwahati, Patna, Vizag & Cochin.

### CUSTOMER CARE

TOLL FREE No

**1800 1800 004**

- WORKS
- ▲ REGIONAL OFFICES
- ▲ AREA OFFICES
- SALES AND SERVICE DEALERS

### MARKETING H.Q.

5th Floor, "TDI Center", Jasola, New Delhi - 25  
Ph.: +91-11-40549900 (30 Lines), Fax: 40549922  
E-mail: marketing@ace-cranes.com, works@ace-cranes.com

### REGISTERED OFFICE

Dudhola Link Road, Dudhola, Palwal-121102, Haryana  
Ph.: +91-1275-280111, Fax: +91-1275-280133  
CIN : L74899HR1995PLC053860

### MUMBAI OFFICE

31, "Kalpataru Court", Chembur, Mumbai - 74  
Ph.: +91-22-25206846, 25207070, Telefax: 25207071  
E-mail: acemumbai@ace-cranes.com

### KOLKATA OFFICE

"Forma Towers" 84-A, Second Floor, AJC Bose Road, Kolkata - 14, Ph.: +91-33-65012050  
E-mail: acekolkata@ace-cranes.com

### CHENNAI OFFICE

1st Floor, "Alsa Regency", 165, Eldams Road, Alwar Pet, Chennai - 18  
Ph.: +91-44-24314253, Telefax: 24314252  
E-mail: acechennai@ace-cranes.com



# ACE

**Action Construction Equipment Ltd.**

Contact:



ACE reserves the right to alter any specifications without prior notice, Dimensions, weights & capacities mentioned herein are variable by ± 5%. Accessories if shown are not part of the Standard Equipment.



www.ace-cranes.com

SX 120/08/15

# ACE

# SX 120

## Nextgen Hydraulic Mobile Crane

Rough terrain and rugged articulated pick n move crane.

**ACE** INDIA'S NO. 1  
MOBILE & TOWER CRANE CO.

- Air brakes
- Slotted boom
- Self Adjusting hook block
- Ergonomically designed front mounted cabin
- Improved kinematics
- Better visibility
- Better creep speed



**BEST IN CLASS STABILITY**  
Full rated lifting capacity available in articulated/steered position

*Nothing beats an **ACE***





Specifications

SX120

LIFTING CAPACITY (Free on wheels)	12 Tonnes
ENGINE	KOEL/ACE Water Cooled Diesel Engine
Rated Power	49.5 BHP at 2200 RPM
ELECTRICAL SYSTEM	12V, Negative earth with 35 Amp. Alternator and 75 Amp. Battery
STEERING	Power steering through orbitrol with twin hydraulic double acting cylinders having 45° articulation on either side .
BRAKES	
Service	<ul style="list-style-type: none"><li>Fully air operated S Cam dual brakes on front wheels and air operated disc brakes on rear wheels. Brakes are actuated through a single pedal.</li></ul>
Parking	<ul style="list-style-type: none"><li>Air operated spring actuated fail safe type.</li></ul>

HYDRAULIC  
SYSTEM

- Gear / Intra Vane type Main Pump.
- Three spools control valve with  
built in Relief valve.
- Suction line has 100 mesh size  
Strainer while return line is fitted  
with 25 micron full flow filter.
- Two double acting lift cylinders, two  
double acting steering cylinders and  
one double acting extension cylinder.

TRANSMISSION

Heavy Duty, sliding mesh with  
6 forward and 2 reverse speeds  
with high low range selector.

Clutch

Hydraulically operated, heavy duty, dry  
friction cera-metallic clutch plate with  
diaphragm type pressure plate.

Top Speed

29 KMPH Without load

BOOM LUFFING

Range  
Time

-3° TO + 63°  
Lowering : 14~16 Seconds  
Raising : 21~24 Seconds



- 1 CABIN  
Front mounted, ergonomically  
designed spacious Cabin for  
better visibility & driveability.



- 2 STABLE DESIGN  
3 Point Oscillation Joint provides for  
safer and stable operation.



- 3 INCREASED VISIBILITY  
Bigger size front windscreen  
provided for better visibility and  
safe operation.



- 4 EASY MAINTENANCE  
The engine is easily accessible for daily  
maintenance checks including battery, air filter,  
oil level and cooling system



- 5 SLOTTED BOOM  
Facilitates easier  
load positioning &  
fitted with self adjusting  
hook block.

NOTE : • All above specifications are pertaining to SX120 model fitted with 11.0 Mtrs. boom.  
• Rated loads are on the basis of operation on firm and level surface..

Specifications

SX120

TELESCOPIC BOOM	Three part slotted boom with hydraulically operated synchronized extensions (11.0 mtrs height).
Telescoping Timing	In : 6~9 Seconds Out : 13~16 Seconds
FLUID CAPACITIES	
Engine	8.00 Ltrs.
Fuel Tank	120.00 Ltrs
Hydraulic Tank	100.00 Ltrs.
Transmission	37.00 Ltrs.
TYRES	
Front	11.00 x 20 – 16 PR (4 Nos.)
Rear	13.00 x 24 – 12 PR (2 Nos.)
SAFETY	<ul style="list-style-type: none"><li>● Hose failure protection.</li><li>● Audio over hoisting indication</li><li>● Safety brakes on hoist.</li><li>● Self-adjusting hook block.</li><li>● Front and rear wheel guard(s)</li></ul>
HOIST	Winch is driven by hydraulic motor and fitted with self adjusting hook block employing 4 falls of 13mm dia. Rope.
Hoist Speed	50 Mtrs./Min. (Line Speed)

STANDARD  
EQUIPMENT

- ROPS fully enclosed wide view  
front mounted cabin
- Rear View Camera
- Front and Rear work lights
- Reflectors and rear view mirror
- Tool kit
- Cabin Fan
- Gauges :-
  - a) Water temperature
  - b) Engine oil pressure
  - c) Fuel Gauge
  - d) RPM meter cum hour recorder
  - e) Air pressure

OPTIONAL  
EQUIPMENT

- Fly jib (Max. Capacity : 1.25 tonnes)
- Spark arrestor
- Safe load indicator/ LMI
- Over Hoist hydraulic cutoff
- Fire extinguisher
- Beacon rotating light
- Front and side proximity sensors
- Cabin front glass protector
- Helper/Slinger seat
- 3 Part slotted boom (12.6 mtrs height)

OPERATING WEIGHT

13300 Kgs



- 6 STEERING WHEEL & CONTROLS  
Steering wheel is provided  
as a standard feature, which  
along with ergonomically placed  
operator console and instrument  
cluster ensures ease of operation.



- 7 REAR DECK  
Spacious & well laid out rear  
deck for storing lifting tackles etc.  
and provides ample space for  
slingers/helpers.



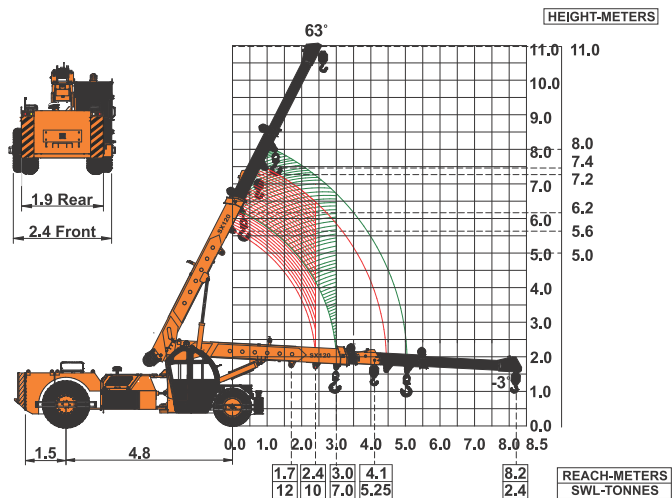
- 8 OPTIMIZED KINEMATICS AND LOW C.G.  
SX120 crane has been designed  
keeping in mind operational safety  
parameters with low Center of Gravity  
(C.G.) providing best in class stability.



- 9 GROUND CLEARANCE  
Ground clearance of 300mm  
facilitates easier rough terrain  
operation.

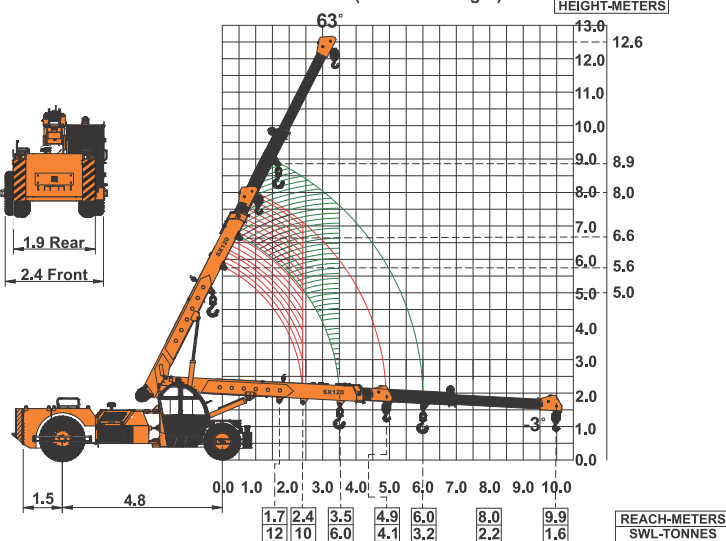
ACE advantages

ACE SX120 Model Crane fitted with  
3 Part slotted boom (11.0 Mtrs. height)



Full rated lifting capacity available in articulated / steered condition.

ACE SX120 Model Crane fitted with  
3 Part slotted boom (12.6 Mtrs. height)



Full rated lifting capacity available in articulated / steered condition.