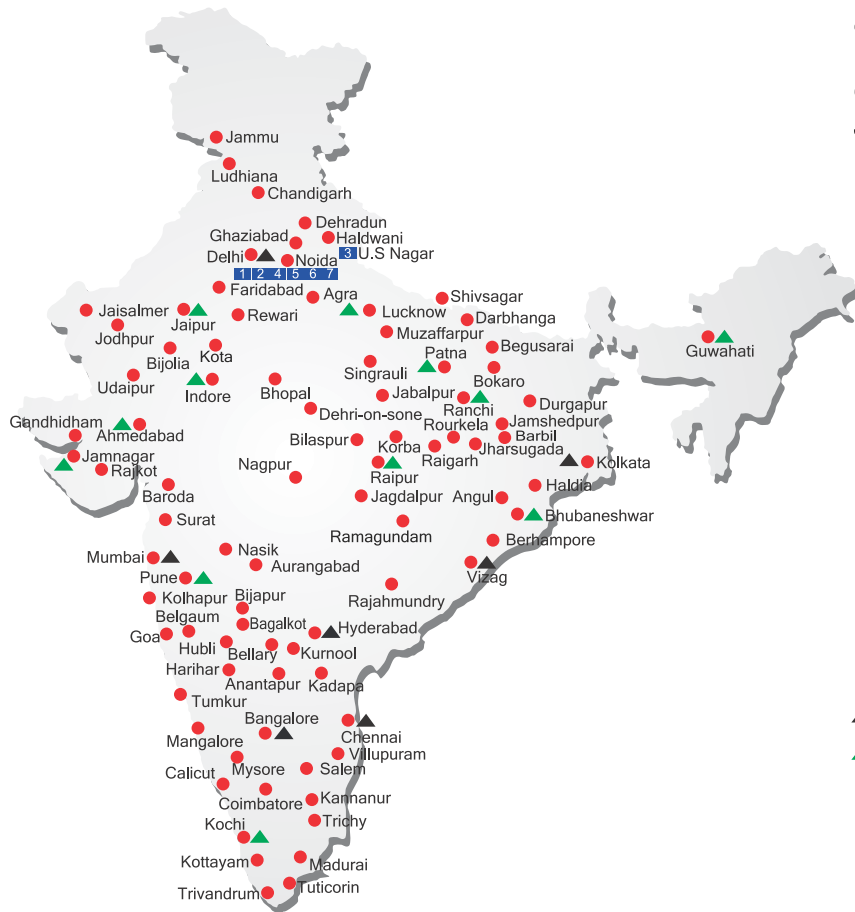


## ALL INDIA NETWORK



### SPARE PARTS & SERVICE

ACE has all India Sales and Service network operating out of all the major cities. These outlets are fully equipped to provide genuine spare parts and services by company trained engineers. These outlets are further supported by company officials based at Delhi, Mumbai, Chennai, Kolkatta, Ahmedabad, Surat, Pune, Jaipur, Chandigarh, Ranchi, Raipur, Indore, Bhubneshwar, Lucknow, Jamnagar, Hyderabad, Bangalore, Guwahati, Patna, Vizag & Cochin.

### CUSTOMER CARE

TOLL FREE No  
**1800 1800 004**

- WORKS
- ▲ REGIONAL OFFICES
- ▲ AREA OFFICES
- SALES AND SERVICE DEALERS

### MARKETING H.Q.

4th Floor, Pinnacle, Suraj Kund, NCR-121009,  
Ph.: 0129-4550000 (100 Lines)  
E-mail: marketing@ace-cranes.com

### REGISTERED OFFICE

Dudhola Link Road, Dudhola, Palwal-121102, Haryana  
Ph.: +91-1275-280111, Fax: +91-1275-280133  
CIN : L74899HR1995PLC053860

### MUMBAI OFFICE

31, "Kalpataru Court", Chembur, Mumbai - 74  
Ph.: +91-22-25206846, 25207070, Telefax: 25207071  
E-mail: acemumbai@ace-cranes.com

### KOLKATA OFFICE

"Forma Towers" 84-A, Second Floor, AJC Bose Road,  
Kolkata - 14. Ph.: +91-33-65012050  
E-mail: acekolkata@ace-cranes.com

### CHENNAI OFFICE

1st Floor, "Alsa Regency", 165, Eldams Road,  
Alwar Pet, Chennai - 18  
Ph.: +91-44-24314253, Telefax: 24314252  
E-mail: acechennai@ace-cranes.com



# ACE

**Action Construction Equipment Ltd.**

Contact:



ACE reserves the right to alter any specifications without prior notice, Dimensions, weights & capacities mentioned herein are variable by ± 5%, Accessories if shown are not part of the Standard Equipment.



www.ace-cranes.com

12XW/Jan 2017

# ACE

# 12 X W

## Hydraulic Mobile Crane

12 tonnes Capacity.  
Rough terrain and rugged  
articulated pick n move crane.

**ACE** INDIA'S NO. 1  
MOBILE & TOWER CRANE CO.

- Best in class stability
- Better creep speed
- Heavy duty and robust construction
- Ergonomically designed cabin



*Nothing beats an ACE*





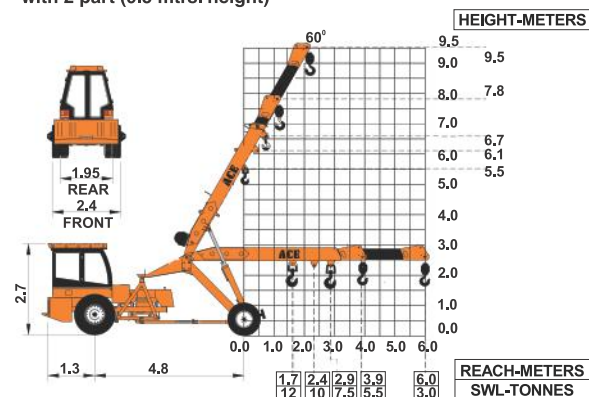
## Specifications

## 12XW

<b>LIFTING CAPACITY</b> (Free on wheels)	12 Tonnes
<b>ENGINE</b>	Simpson's S433(I) F1 (CEV BS-III), 4 cylinder, water cooled diesel engine OR suitable equivalent engine
Rated Power	48 BHP (36KW) at 2200 RPM.
<b>TRANSMISSION</b>	Heavy duty, sliding mesh with 6 forward and 2 reverse speeds with high low range selector.
Clutch	Heavy duty, single, dry friction, wire woven clutch plate with diaphragm type pressure plate.
Top Speed	28 KMPH without load.
<b>POWER STEERING</b>	55° articulation through 2 hydraulic cylinders on either side and turning radius of 6.5 Mtrs. (approx) on outer edge of rear wheels.
<b>BRAKES</b>	Pneumatically assisted hydraulic brakes. Front and rear brakes are actuated through a single pedal.  Parking brake is Provided.
<b>HYDRAULIC SYSTEM</b>	<ul style="list-style-type: none"> <li>● Gear/Intra vane type main pump.</li> <li>● Four spools control valve.</li> <li>● Suction line has 100 mesh size strainer while return line is fitted with 25 micron full flow filter.</li> <li>● Two double acting lift cylinders, two double acting steering cylinders and one double acting extension cylinder.</li> </ul>

<b>ELECTRICAL SYSTEM</b>	12V. Negative earth with 35 Amp. alternator and 75 Amp hr. battery.
<b>TELESCOPIC BOOM</b>	Two part boom with hydraulically operated extension.
Telescoping Time	12 Seconds.
<b>BOOM LUFFING</b>	
Range	-5° to +60°
Time	21 Seconds.
<b>HOIST</b>	Winch is driven by hydraulic motor employing 4 falls of 13 mm dia rope and fitted with hook block.
Hoist Speed	50 Mtrs./Min. (Line speed)
<b>TYRES</b>	
Front	11.00 x 20 - 16 PR (4 Nos.)
Rear	13.00 x 24 - 12 PR (2 Nos.)
<b>SAFETY</b>	<ul style="list-style-type: none"> <li>● Audio overload indication.</li> <li>● Hose failure protection.</li> <li>● Audio over hoisting indication.</li> <li>● Safety brakes on hoist.</li> <li>● Cylinder guards.</li> </ul>
<b>FLUID CAPACITIES</b>	
Air Cleaner	0.75 Ltrs.
Engine	8.00 Ltrs.
Fuel Tank	50.00 Ltrs.
Hydraulic Tank	125.00 Ltrs.
Transmission	37.00 Ltrs.
<b>STANDARD EQUIPMENT</b>	<ul style="list-style-type: none"> <li>● ROPS fully enclosed wide view cabin with rotomould canopy.</li> <li>● Front tyre protector.</li> <li>● Front and rear work lights.</li> <li>● Reflectors &amp; rear view mirror.</li> <li>● Tool kit.</li> <li>● Gauges :-               <ul style="list-style-type: none"> <li>a) Water temperature.</li> <li>b) Engine oil pressure.</li> <li>c) RPM meter cum hourrecorder</li> </ul> </li> </ul>
<b>OPTIONAL EQUIPMENT</b>	<ul style="list-style-type: none"> <li>● Fly jib.</li> <li>● Steering Wheel.</li> <li>● Air Brakes.</li> <li>● Boom (height 11.25 mtrs or 12.9 mtrs)</li> <li>● Spark arrester.</li> <li>● City type double driving cabin.</li> <li>● Over hoisting hydraulic cut off.</li> <li>● Safe load indicator / LMI.</li> <li>● Slotted boom</li> </ul>
<b>OPERATING WEIGHT</b>	9250 kgs. (for 2 Part) 9800 kgs. (for 3 Part - 11.25 Mtrs.)

ACE 12 XW Model Crane fitted with 2 part (9.5 mtrs. height)



NOTE: All above specifications are pertaining to 12XW model fitted with 2 part boom. Rated loads are on the basis of operation on firm and level surface.



**1 STEERING WHEEL & CONTROLS**  
Steering wheel is provided as an optional feature, which along with ergonomically placed operator console and instrument cluster ensure ease of operation.

**2 INCREASED VISIBILITY**  
Bigger size front windscreen and re-routing of hoses provide much better front visibility.

**4 TRAVEL SPEED**  
Travel speed of 28 kmph provides faster intersite movements.

**6 STEERING CYLINDERS**  
700 mm stroke cylinders ensure proper steering even in loose, sandy & rocky terrains.

**5 MAIN FRAME**  
Heavy duty & robust construction.

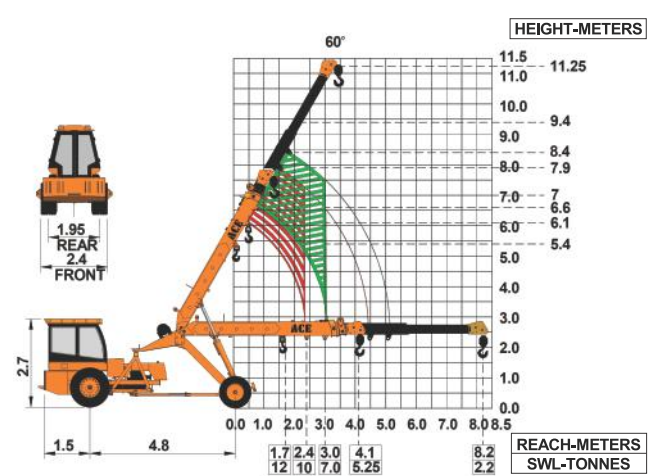
**7 GROUND CLEARANCE**  
High ground clearance of 400mm for easier rough terrain operation.

**8 CITY TYPE DOUBLE DRIVING CABIN (OPTIONAL)**

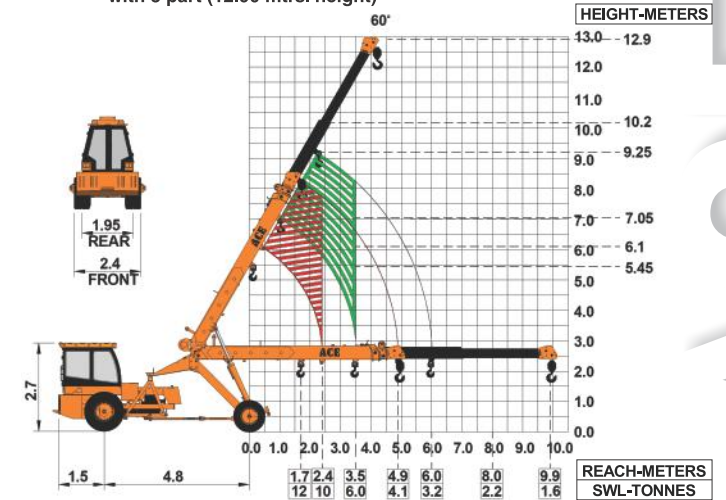
**9 SELF ADJUSTING HOOK BLOCK**  
Provides for safe boom extension and prevents damage of wire rope (optional).

**10 SLOTTED BOOM**  
For easier load positioning (optional)

ACE 12 XW Model Crane fitted with 3 part boom (11.25 mtrs. height)



ACE 12 XW Model Crane fitted with 3 part (12.90 mtrs. height)



ACE advantages