

ACE has all India Sales and Service network operating out of all the major cities. These outlets are fully equipped to provide genuine spare parts and services by company trained engineers. These outlets are further supported by company officials based at Delhi, Mumbai, Chennai, Kolkatta, Ahmedabad, Surat, Pune, Jaipur, Chandigarh, Ranchi, Raipur, Indore, Bhubneshwar, Lucknow, Jamnagar, Hyderabad, Bangalore, Guwahati, Patna, Vizag & Cochin.

**TOLL FREE No**

- WORKS
- ▲ REGIONAL OFFICES
- ▲ AREA OFFICES
- SALES AND SERVICE DEALERS

5th Floor, "TDI Center", Jasola, New Delhi - 25  
Ph.: +91-11-40549900 (30 Lines), Fax: 40549922  
E-mail: [marketing@ace-cranes.com](mailto:marketing@ace-cranes.com), [works@ace-cranes.com](mailto:works@ace-cranes.com)

Dudhola Link Road, Dudhola, Palwal-121102, Haryana  
Ph.: +91-1275-280111 , Fax: +91-1275-280133  
CIN : L74899HR1995PLC053860

31, "Kalpataru Court", Chembur, Mumbai - 74  
Ph.: +91-22-25206846, 25207070, Telefax: 25207071  
E-mail: [acemumbai@ace-cranes.com](mailto:acemumbai@ace-cranes.com)

"Forma Towers" 84-A, Second Floor, AJC Bose Road,  
Kolkata - 14, Ph.: +91-33-65012050  
E-mail: [acekolkatta@ace-cranes.com](mailto:acekolkatta@ace-cranes.com)

1st Floor, "Alsa Regency", 165, Eldams Road,  
Alwar Pet, Chennai - 18  
Ph.: +91-44-24314253, Telefax: 24314252  
E-mail: [acechennai@ace-cranes.com](mailto:acechennai@ace-cranes.com)



**ACE**

Contact:



ACE reserves the right to alter any specifications without prior notice. Dimensions, weights & capacities mentioned herein are variable by  $\pm 5\%$ . Accessories if shown are not part of the Standard Equipment.



www.ace-cranes.com



# ACE

# 14 XW

14 Tonnes Capacity  
Rough terrain and rugged  
articulated pick n move crane.



- Best in class stability
- Better creep speed
- Heavy duty and robust construction
- Ergonomically designed cabin

Nothing beats an **ACE**





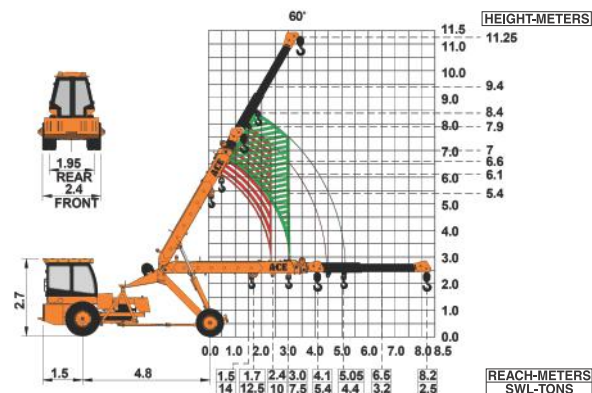
## Specifications

## 14XW

<b>LIFTING CAPACITY</b> (Free on wheels)	14 Tonnes
<b>ENGINE</b>	Simpson's S433(I) F1 (CEV BS-III), 4 cylinder, water cooled diesel engine OR suitable equivalent engine
Rated Power	48 BHP (36KW) at 2200 RPM
<b>TRANSMISSION</b>	Heavy duty, sliding mesh with 6 forward and 2 reverse speeds with high low range selector.
Clutch	Heavy duty, single, dry friction, wire woven clutch plate with diaphragm type pressure plate.
Top Speed	28 KMPH without load.
<b>HYDRAULIC SYSTEM</b>	<ul style="list-style-type: none"> <li>● Gear/Intra vane type main pump.</li> <li>● Four spools control valve. (heavy duty)</li> <li>● Suction line has 100 mesh size strainer while return line is fitted with 25 micron full flow filter.</li> <li>● Two double acting lift cylinders, two double acting steering cylinders and one double acting extension cylinder.</li> </ul>
<b>POWER STEERING</b>	Articulation through 2 hydraulic cylinders 55° articulation on either side and turning radius of 6.5 Mtrs. (approx) on outer rear wheels.
<b>BRAKES</b>	Pneumatically assisted hydraulic brakes. Front and rear brakes are actuated through a single pedal.  Parking brake is Provided.
<b>TELESCOPIC BOOM</b>	Three part boom with hydraulically operated synchronised extensions (11.25 mtrs. height)
Telescoping Time	14 Seconds.

<b>BOOM LUFFING</b>	
Range	-4° to + 60°
Time	20 ± 3 Seconds.
<b>HOIST</b>	Winch is driven by hydraulic motor and fitted with hook block employing 4 falls of 13 mm dia rope.
Hoist Speed	50 Mtrs./Min. (Line speed)
<b>FLUID CAPACITIES</b>	
Air Cleaner	0.75 Ltrs.
Engine	8.00 Ltrs.
Fuel Tank	50.00 Ltrs.
Hydraulic Tank	125.00 Ltrs.
Transmission	37.00 Ltrs.
<b>ELECTRICAL SYSTEM</b>	12V. Negative earth with 35 Amp. alternator and 75 Amp hr. battery.
<b>TYRES</b>	
Front	11.00 x 20 - 16 PR (4 Nos.)
Rear	13.00 x 24 - 12 PR (2 Nos.)
<b>SAFETY</b>	<ul style="list-style-type: none"> <li>● Audio overload indication.</li> <li>● Hose failure protection.</li> <li>● Audio over hoisting indication.</li> <li>● Safety brakes on hoist.</li> <li>● Cylinder guards.</li> </ul>
<b>STANDARD EQUIPMENT</b>	<ul style="list-style-type: none"> <li>● ROPS fully enclosed wide view cabin with rotomould canopy.</li> <li>● Front tyre protector.</li> <li>● Front and rear work lights.</li> <li>● Reflectors &amp; rear view mirror.</li> <li>● Tool kit.</li> <li>● Gauges :- a) Water temperature. b) Engine oil pressure. c) RPM meter cum hour recorder d) Air pressure</li> </ul>
<b>OPTIONAL EQUIPMENT</b>	<ul style="list-style-type: none"> <li>● Fly jib.</li> <li>● Steering Wheel</li> <li>● Spark arrester</li> <li>● Air Brakes</li> <li>● 3 part slotted boom with self adjusting Hook Block (fully hydraulic-12.9 mtrs. height)</li> <li>● 4 part slotted boom with self adjusting Hook Block (one manual extension- 15.1 mtrs. height)</li> <li>● Over hoisting hydraulic cutoff</li> <li>● Safe load indicator / LMI</li> <li>● City type double driving cabin</li> </ul>
<b>OPERATING WEIGHT</b>	12000 kgs.

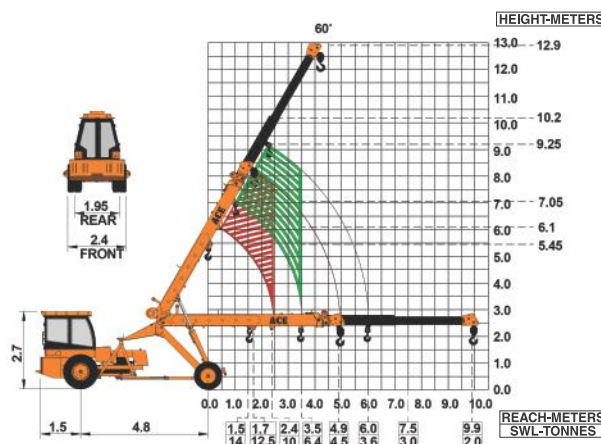
ACE 14 XW Model Crane fitted  
with 3 part slotted boom (11.25 Mtrs. height)



NOTE: • All above specifications are pertaining to 14XW model fitted with 3 part boom  
• Rated loads are on the basis of operation on firm and level surface.



ACE 14 XW Model Crane fitted  
with 3 part slotted boom (12.90 Mtrs. height)



ACE 14 XW Model Crane fitted  
with 4 part slotted boom (15.1 Mtrs. height and one manual Extension).

