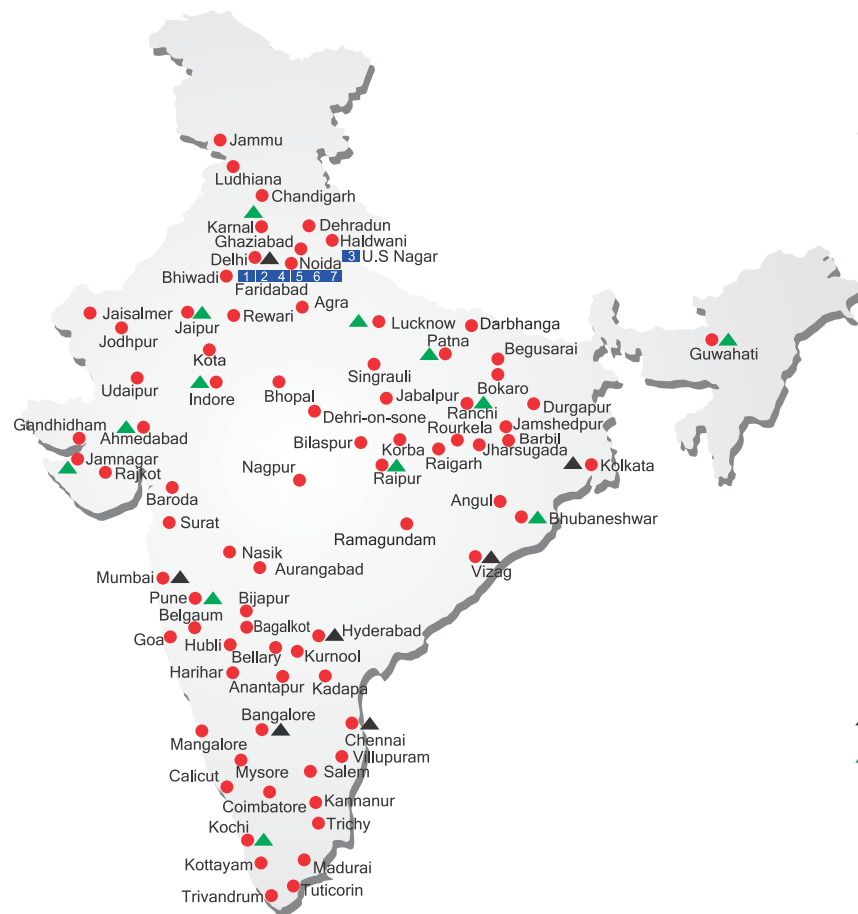


ALL INDIA NETWORK



SPARE PARTS & SERVICE

ACE has all India Sales and Service network operating out of all the major cities. These outlets are fully equipped to provide genuine spare parts and services by company trained engineers. These outlets are further supported by company officials based at Delhi, Mumbai, Chennai, Kolkatta, Ahmedabad, Surat, Pune, Jaipur, Chandigarh, Ranchi, Raipur, Indore, Bhubneshwar, Lucknow, Jamnagar, Hyderabad, Bangalore, Guwahati, Patna, Vizag & Cochin.

CUSTOMER CARE

TOLL FREE No
1800 1800 004

- WORKS
- ▲ REGIONAL OFFICES
- ▲ AREA OFFICES
- SALES AND SERVICE DEALERS

MARKETING H.Q.

5th Floor, "TDI Center", Jasola, New Delhi - 25
Ph.: +91-11-40549900 (30 Lines), Fax: 40549922
E-mail: marketing@ace-cranes.com, works@ace-cranes.com

REGISTERED OFFICE

Dudhola Link Road, Dudhola, Palwal-121102, Haryana
Ph.: +91-1275-280111, Fax: +91-1275-280133
CIN : L74899HR1995PLC053860

MUMBAI OFFICE

31, "Kalpataru Court", Chembur, Mumbai - 74
Ph.: +91-22-25206846, 25207070, Telefax: 25207071
E-mail: acemumbai@ace-cranes.com

KOLKATA OFFICE

"Forma Towers" 84-A, Second Floor, AJC Bose Road, Kolkata - 14. Ph.: +91-33-65012050
E-mail: acekolkata@ace-cranes.com

CHENNAI OFFICE

1st Floor, "Alsa Regency", 165, Eldams Road, Alwar Pet, Chennai - 18
Ph.: +91-44-24314253, Telefax: 24314252
E-mail: acechennai@ace-cranes.com

ACE

Action Construction Equipment Ltd.

Contact:



ACE reserves the right to alter any specifications without prior notice. Dimensions, weights & capacities mentioned herein are variable by $\pm 5\%$. Accessories if shown are not part of the Standard Equipment.



www.ace-cranes.com

15XWE0015

ACE

15 XWE

Hydraulic Mobile Crane

15 Tonnes Capacity
Rough terrain and rugged articulated pick n move crane.

ACE INDIA'S NO. 1
MOBILE & TOWER CRANE CO.



- Low Center of Gravity
- Slotted boom
- Self Adjusting hook block
- Ergonomically designed Cabin

Nothing beats an **ACE**

Specifications

15XWE

LIFTING CAPACITY (Free on wheels)	15 Tonnes	HYDRAULIC SYSTEM	<ul style="list-style-type: none">● Gear / Intra Vane type Main Pump.● Four spools control valve with built in Relief valve (heavy duty)● Suction line has 100 mesh size Strainer while return line is fitted with 25 micron full flow filter● Two double acting lift cylinders, two double acting steering cylinders and one double acting extension cylinder
ENGINE	Simpson's S433(I) F1 (CEV BS-III), 4 cylinder, water cooled diesel engine or suitable equivalent engine	TELESCOPIC BOOM	Three part slotted boom with hydraulically operated synchronized extensions having self adjusting hook block.
Rated Power	48 BHP (36KW) at 2200 RPM	Telescoping Time	12 Seconds
TRANSMISSION	Heavy duty, sliding mesh with 6 forward and 2 reverse speeds with high low range selector.	BOOM LUFFING	Range Time
Clutch	Heavy duty, single, dry friction, wire woven clutch plate with diaphragm type pressure plate.		-2° to + 53° 18 Seconds
Top Speed	28 KMPH Without load	HOIST	Winch is driven by hydraulic motor and fitted with self adjusting hook block employing 4 falls of 13mm dia. Rope.
STEERING	Lever operated with 55° articulation on either side and turning radius of 6.5 Mtrs. (approx) on outer rear wheels	Hoist Speed	50 Mtrs./Min. (Line speed)
BRAKES	Pneumatically assisted hydraulic brakes, Front and rear brakes are actuated through a single pedal. Parking brake is provided.		

Specifications

15XWE

FLUID CAPACITIES		STANDARD EQUIPMENT	<ul style="list-style-type: none">● ROPS fully enclosed wide view cabin with rotomould canopy.● Front tyre protector.● Front and rear work lights.● Reflectors & rear view mirror.● Tool kit.● Gauges :-<ul style="list-style-type: none">a) Water temperature.b) Engine oil pressure.c) RPM meter cum hour recorderrd) Air pressure
Air Cleaner	0.75 Ltrs.	OPTIONAL EQUIPMENT	<ul style="list-style-type: none">● Fly jib● Steering Wheel in lieu of lever type steering● Spark arrestor● 3 part slotted boom (fully hydraulic 15.0 mtrs. height)● 4 part slotted boom, 3 part hydraulically actuated & Synchronized and 4th part power extended (15.3 mtrs or 17.7 mtrs height)● Over Hoist hydraulic cutoff● Safe load indicator / LMI
Engine	8.00 Ltrs.		
Fuel Tank	45.00 Ltrs		
Hydraulic Tank	125.00 Ltrs.		
Transmission	37.00 Ltrs.		
ELECTRICAL SYSTEM	12V, Negative earth with 35 Amp. alternator and 88 Amp hr. battery		
TYRES			
Front	11.00 x 20 – 16 PR (4 Nos.)		
Rear	14.00 x 25 – 12 PR (2 Nos.)		
SAFETY	<ul style="list-style-type: none">● Audio operated indication.● Hose failure protection.● Audio over hoisting indication● Safety brakes on hoist.● Cylinder guards● Self adjusting hook block		
		OPERATING WEIGHT	11600 Kgs.



1 SELF ADJUSTING HOOK BLOCK
Provides for safe boom extension and prevents damage of wire rope.



2 ROPS CABIN
Wide view ROPS cabin with curved windscreen for better visibility.



3 MAIN FRAME
Heavy duty & robust construction.



4 INCREASED VISIBILITY
Bigger size front windscreen and re-routing of hoses provide much better front visibility.



5 LIFT CYLINDERS
Heavy duty lift cylinders ensure higher lifting capacities.



6 GROUND CLEARANCE
High ground clearance of 400mm for easier rough terrain operation.



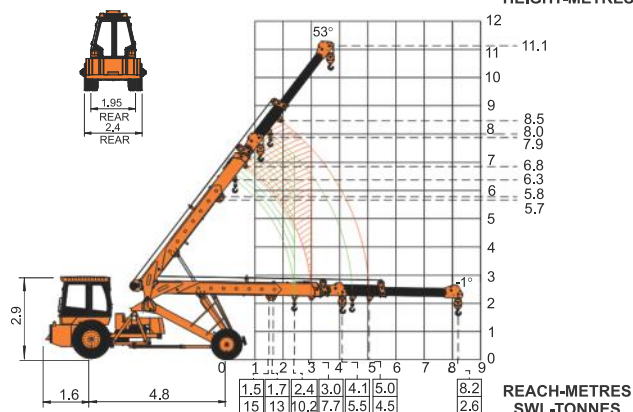
7 STEERING CYLINDERS
700 mm stroke cylinders ensure proper steering even in loose, sandy & rocky terrains.



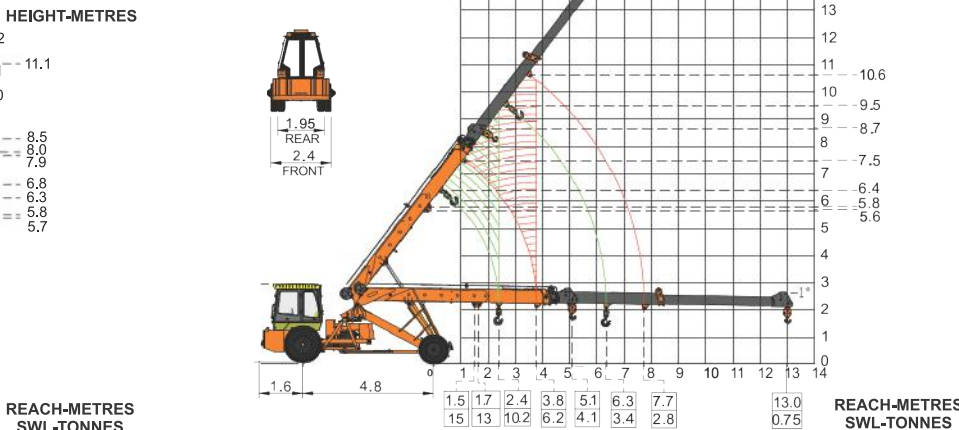
8 SLOTTED BOOM
For easier load positioning

ACE advantages

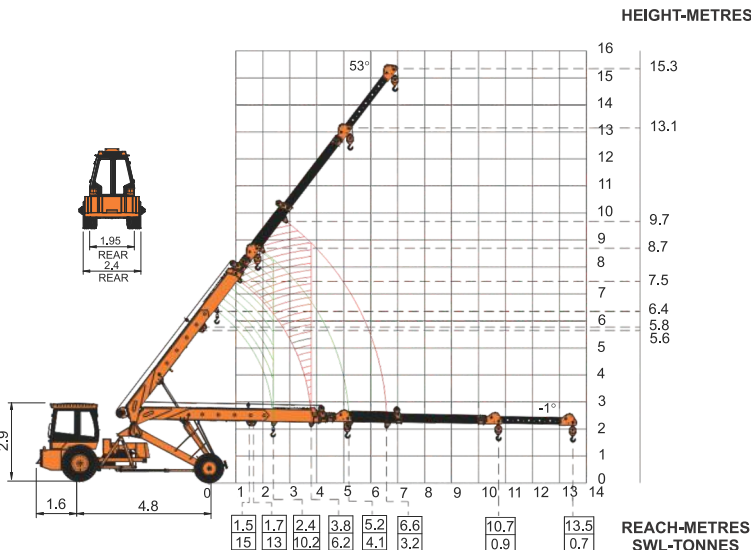
ACE 15XWE MODEL CRANE FITTED WITH 3 PART SLOTTED BOOM (11.1 METERS HEIGHT)



ACE 15XWE MODEL CRANE FITTED WITH 3 PART SLOTTED BOOM (15.0 METERS HEIGHT)



ACE 15XWE MODEL CRANE FITTED WITH 4 PART SLOTTED BOOM (15.3 METERS HEIGHT) WITH ONE MANUAL EXTENSION)



ACE 15XWE MODEL CRANE FITTED WITH 4 PART SLOTTED BOOM (17.7 METERS HEIGHT) WITH ONE MANUAL EXTENSION)

