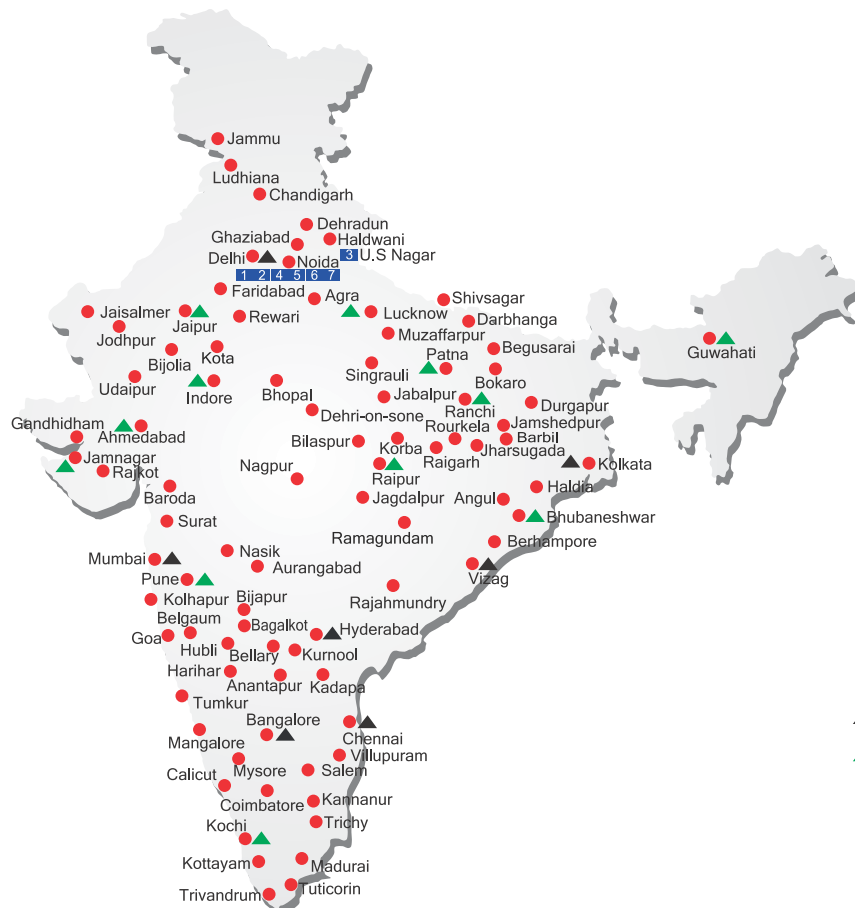


ALL INDIA NETWORK



SPARE PARTS & SERVICE

ACE has all India Sales and Service network operating out of all the major cities. These outlets are fully equipped to provide genuine spare parts and services by company trained engineers. These outlets are further supported by company officials based at Delhi, Mumbai, Chennai, Kolkatta, Ahmedabad, Surat, Pune, Jaipur, Chandigarh, Ranchi, Raipur, Indore, Bhubneshwar, Lucknow, Jamnagar, Hyderabad, Bangalore, Guwahati, Patna, Vizag & Cochin.

CUSTOMER CARE

TOLL FREE No

1800 1800 004

- WORKS
- ▲ REGIONAL OFFICES
- ▲ AREA OFFICES
- SALES AND SERVICE DEALERS

MARKETING H.Q.

4th Floor, Pinnacle, Suraj Kund, NCR 121009
E-mail: marketing@ace-cranes.com

REGISTERED OFFICE

Dudhola Link Road, Dudhola, Palwal-121102, Haryana
Ph.: +91-1275-280111, Fax: +91-1275-280133
CIN : L74899HR1995PLC053860

MUMBAI OFFICE

31, "Kalpataru Court", Chembur, Mumbai - 74
Ph.: +91-22-25206846, 25207070, Telefax: 25207071
E-mail: acemumbai@ace-cranes.com

KOLKATA OFFICE

"Forma Towers" 84-A, Second Floor, A/JC Bose Road,
Kolkata - 14. Ph.: +91-33-65012050
E-mail: acekolkata@ace-cranes.com

CHENNAI OFFICE

1st Floor, "Alsa Regency", 165, Eldams Road,
Alwar Pet, Chennai - 18
Ph.: +91-44-24314253, Telefax: 24314252
E-mail: acechennai@ace-cranes.com

ACE

Action Construction Equipment Ltd.

Contact:

CVI
CERTIFIED
MANAGEMENT SYSTEM
ISO 9001

ACE reserves the right to alter any specifications without prior notice. Dimensions, weights & capacities mentioned herein are variable by ± 5%. Accessories if shown are not part of the Standard Equipment.



ACE

16 XW

Hydraulic Mobile Crane

16 Tonnes Capacity
Rough terrain and rugged
articulated pick n move crane.

ACE INDIA'S NO. 1
MOBILE & TOWER CRANE CO.



- Best in class stability
- Better Creep Speed
- Heavy Duty & Robust Construction
- Ergonomically designed Cabin

Nothing beats an **ACE**

www.ace-cranes.com

Specifications

16XW

LIFTING CAPACITY (Free on wheels)	16 Tonnes	HYDRAULIC SYSTEM	<ul style="list-style-type: none"> ● Gear / Intra Vane type Main Pump. ● Four spools control valve with built in Relief valve (heavy duty) ● Suction line has 100 mesh size Strainer while return line is fitted with 25 micron full flow filter ● Two double acting lift cylinders, two double acting steering cylinders and two double acting extension cylinders.
ENGINE	ACE-A65 (CEV BS-III) 4 cylinder, water cooled diesel engine	TELESCOPIC BOOM	Three part boom with hydraulically operated extensions
Rated Power	61 BHP (45 KW) at 2200 RPM	Telescoping Time	18 Sec.
TRANSMISSION	Heavy duty, sliding mesh with 6 forward and 2 reverse speeds with high low range selector.	BOOM LUFFING	Range Time
Clutch	Heavy duty, single, dry friction cerametallic clutch plate with diaphragm type pressure plate.		-3° to + 66° 20 Sec.
Top Speed	28 KMPH Without load	HOIST	Winch is driven by hydraulic motor and fitted with hook block employing 4 falls of 13mm dia. Rope.
STEERING	Lever operated with 55° articulation on either side and turning radius of 6.5 Mtrs. (approx) on outer rear wheels	Hoist Speed	50 Mtrs./Min. (Line speed)
BRAKES	Air operated S Cam dual brakes on front wheels and air operated disc brakes on rear wheels. Rear wheels brakes are actuated through a single pedal Parking brake is pneumatically operated fail safe type		

Specifications

16XW

FLUID CAPACITIES	Air Cleaner 0.75 Ltrs. Engine 8.00 Ltrs. Fuel Tank 45.00 Ltrs. Hydraulic Tank 125.00 Ltrs. Transmission 57.00 Ltrs.	STANDARD EQUIPMENT	<ul style="list-style-type: none"> ● ROPS fully enclosed wide view cabin with rotomould canopy. ● Front tyre protector. ● Front and rear work lights. ● Reflectors & rear view mirror. ● Tool kit. ● Gauges :- a) Water temperature. b) Engine oil pressure. c) RPM meter cum hour recorderr d) Air pressure
ELECTRICAL SYSTEM	12V, Negative earth with 35 Amp. alternator and 75 Amp hr. battery	OPTIONAL EQUIPMENT	<ul style="list-style-type: none"> ● Fly jib ● Steering Wheel in lieu of lever type steering ● Spark arrestor ● Fire Extinguisher ● 4 part boom, 3 part hydraulically actuated and 4th part power extended (20 Mtrs. height) ● Over Hoist hydraulic cutoff ● Safe load indicator / LMI
TYRES	Front 12.00 x 20 – 18 PR (4 Nos.) Rear 14.00 x 25 – 12 PR (2 Nos.)	OPERATING WEIGHT	14200 Kgs.
SAFETY	<ul style="list-style-type: none"> ● Audio operated indication. ● Hose failure protection. ● Audio over hoisting indication ● Safety brakes on hoist. ● Cylinder guards 		

ACE advantages



- 1 ROPS CABIN
Wide view ROPS cabin for better visibility.



- 2 GROUND CLEARANCE
High ground clearance of 400mm for easier rough terrain operation.



- 3 MAIN FRAME
Heavy duty & robust construction.



- 4 STEERING CYLINDERS
880 mm stroke cylinders ensure proper steering even in loose, sandy & rocky terrains.



- 5 INCREASED VISIBILITY
Bigger size front windscreen and re-routing of hoses provide much better front visibility.



- 6 STEERING WHEEL & CONTROLS
Steering wheel is provided as an optional feature, which along with ergonomically placed operator console and instrument cluster ensures ease of operation.

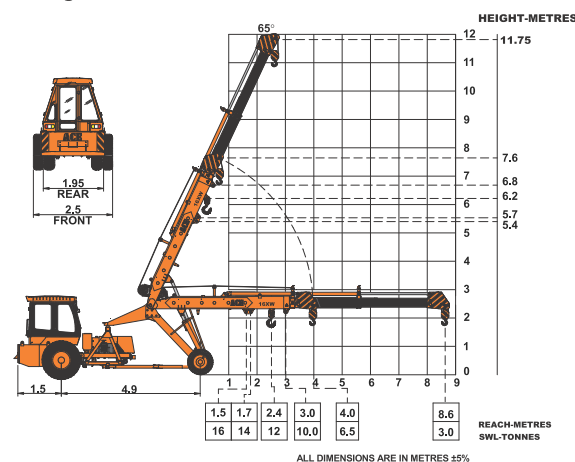


- 7 LIFT CYLINDERS
Heavy duty lift cylinders ensure better lifting capacities.



- 8 Air Brakes
Fully air operated S CAM dual brakes on front wheels

ACE 16XW 3-Part Non Slotted Boom
11.75 Mtrs. Height



ACE 16XW 4-Part Non Slotted Boom (20 Mtrs. Height)
Max. Capacity Manual Extension : 2 Tonnes

