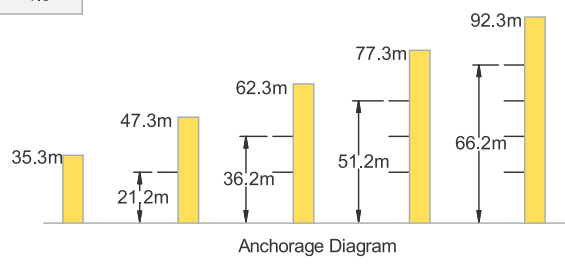


LC 85 Luffing Crane 6 t

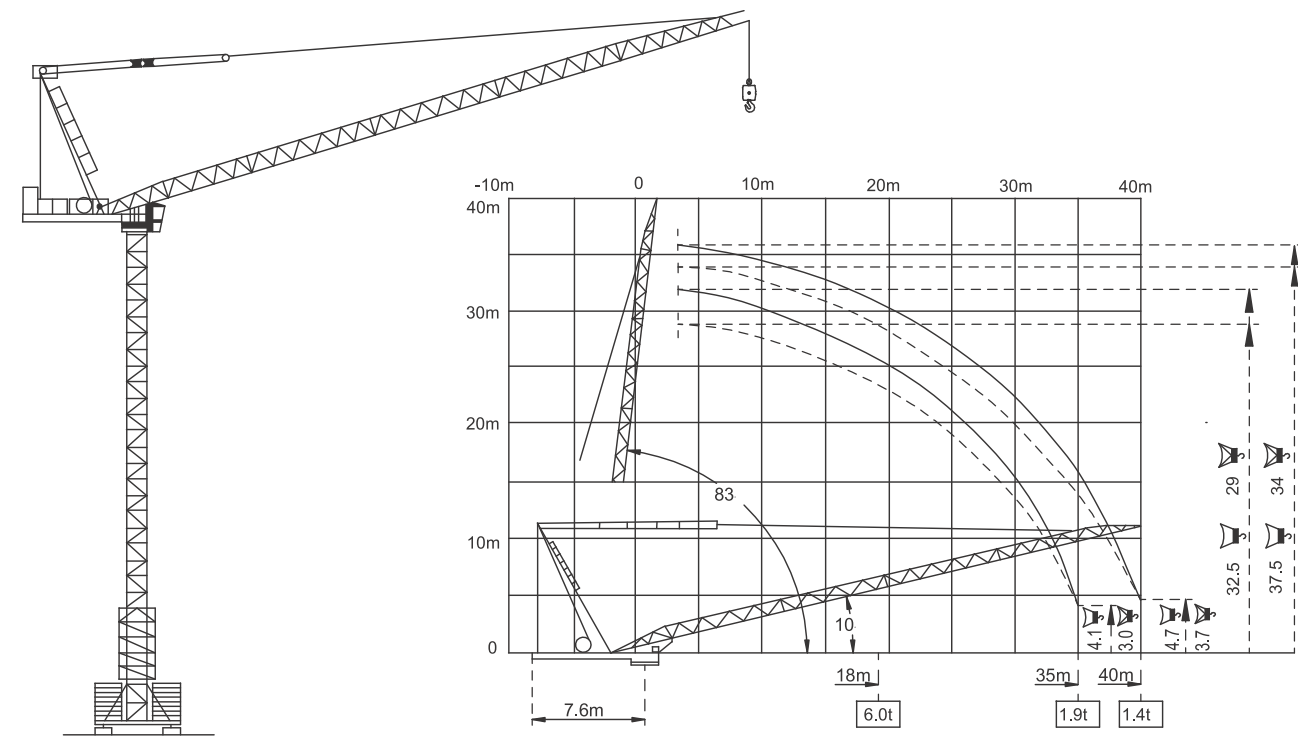
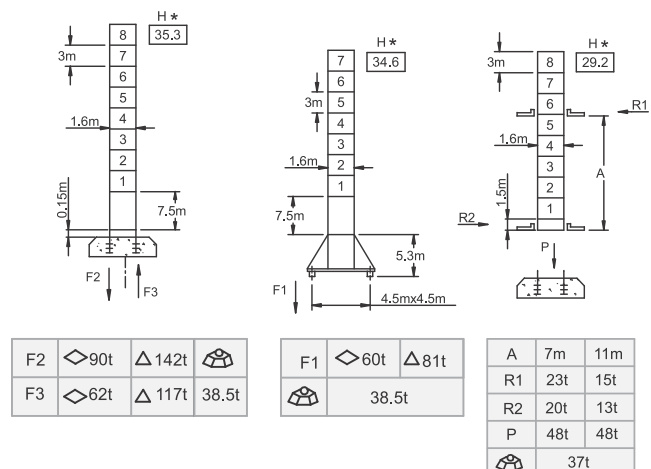
Load Capacity

Jib Length 40m	Radius (m)	4~18	20	25	28.5	30	32	35	40
	Hoisting Load (t)	6.0	5.2	3.7	2.9	2.6	2.3	1.9	1.4
Jib Length 35m	Radius (m)	4~18	20	25	28.5	30	32	35	
	Hoisting Load (t)	6.0	5.2	3.7	2.9	2.6	2.3	1.9	



Specifications

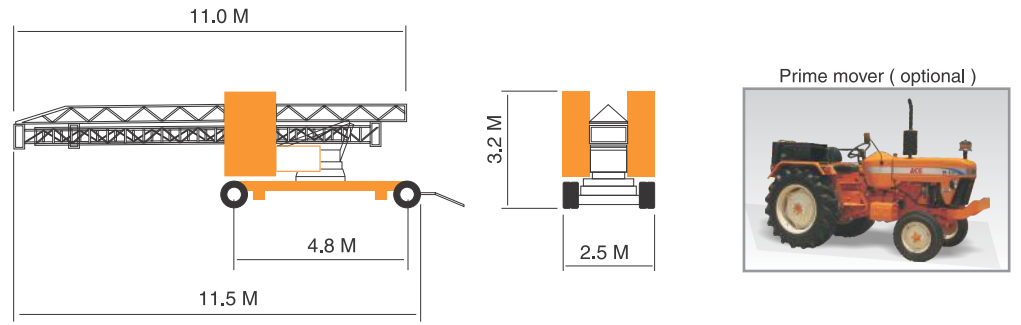
Hoisting	No of Falls	3		4		5	
	Speed (m/min)	0~40	0~66	0~80	0~20	0~33	0~40
Hoisting	Hoisting Load (t)	3.0	1.8	1.5	6.0	3.6	3.0
	Power (kw)	24	24	24	24	24	24
Slewing	Speed (rpm)	0~0.7					
	Power (kw)	6					
Travelling	Speed (rpm)	0~25					
	Power (kw)	2 x 5.2					
Luffing	Speed (m/min)	≤ 3.0					
	Power (kw)	24					
Main Supply		415V / 50Hz					
Electric Power		54 kw (67.5 kVA)					



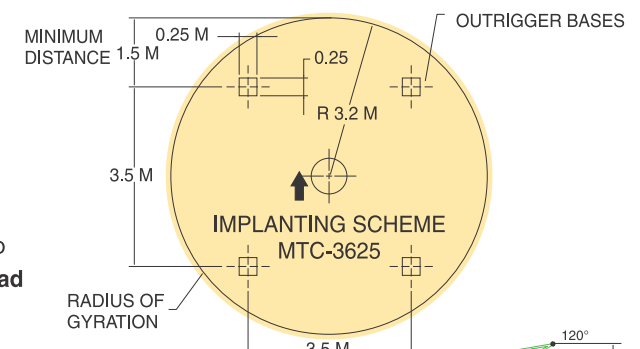
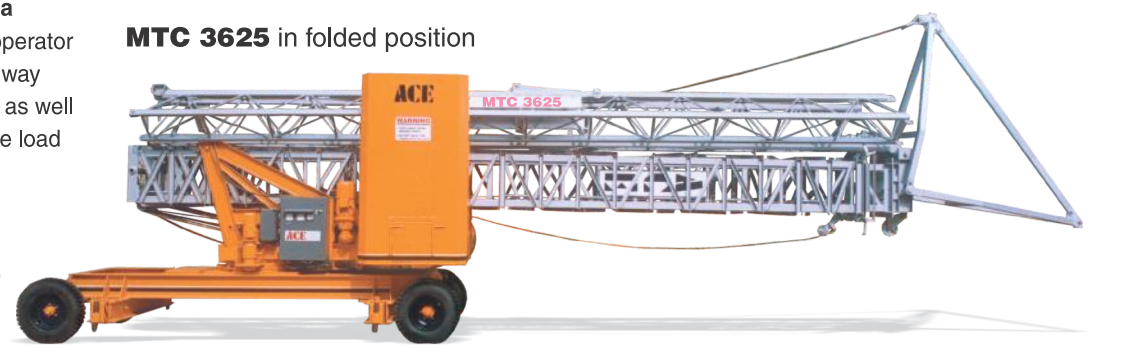
F Reaction ◇ In Service △ Out of Service ⊕ Dead weight without load and counter weights but with longest jib and free standing height.
P Vertical Load H Free Standing Height Jib * 40m

MTC 3625 Mobile Tower Crane 2.5 t

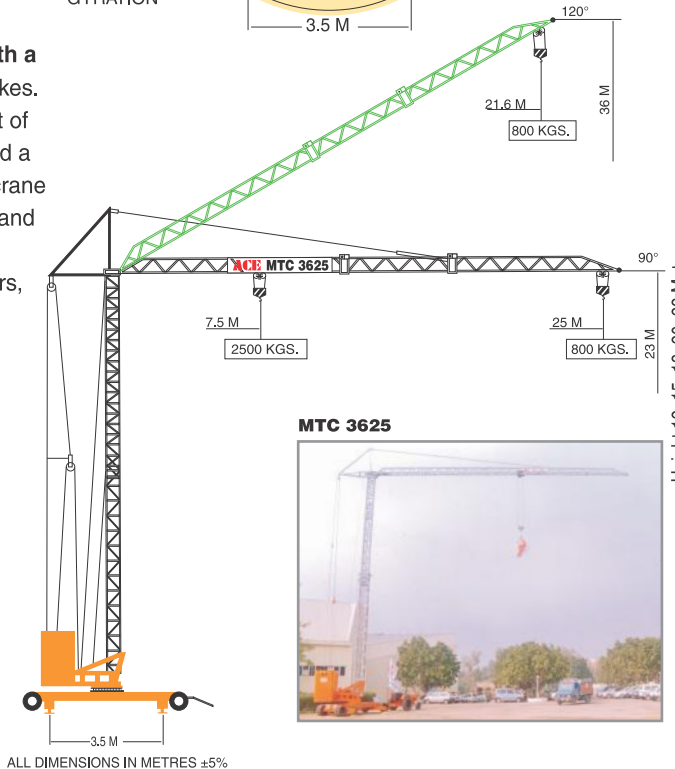
- MTC-3625 is a **self erecting/self folding** mobile tower crane. Operations can be easily affected by a single operator, through a remote control pod.
- The crane is mounted on a **towable type trailer** with compact dimensions for easy transportation.
- MTC-3625 is **controlled by a remote**. This facilitates the operator to position himself in such a way that he can see both picking as well as dumping points for precise load positioning.



- To minimise dead weight for long distance transportation, the counter weight box is designed with trap doors to enable **general ballast use as counter weight**.
- The chassis design enables a short turning radius and **easy positioning**.
- Stabilizers are out and down type and can be reiterated into the lower chassis to satisfy **road clearance codes**.



- An **optional prime mover with a built-in 25KVA generator**, makes MTC-3625 totally independent of any outside electric source and a separate carrier vehicle. The crane uses only a part of the power and the generator can be used for other site equipment like mixers, vibrators and job site lighting systems.



Horizontal jib position	Height	23 mtrs.
	Reach	7.5 mtrs. 25 mtrs.
Raised jib position	Height	36 mtrs.
	Reach	7.2 mtrs. 21.6 mtrs.
Speed	Trolleying	30m/min.
	Hoisting	20m/min. & 40m/min.
Electrical motors	Hoisting	10.0 H.P.
	Slewing	2.0 H.P.
Electric Power		12.5 KVA
Total weight with Ballast		17000 Kgs.
Total weight without Ballast		8000 Kgs.
Transportation Dimensions	Width	2.5 mtrs.
	Length	11.5 mtrs.
	Height	3.2 mtrs.
Safety device		• Vfd
		• Circuit breakers
		• Overload limit switch
		• Moment limit switch
		• Hoist limit switch
Optional		• Trolley limit switch
		Prime mover fitted with 49 BHP, water cooled diesel engine and a 25 KVA alternator.

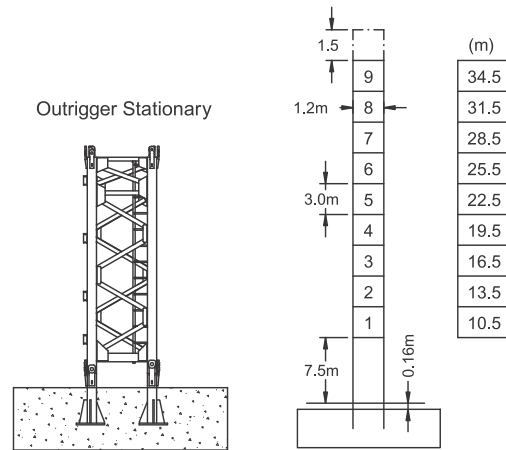
ALL DIMENSIONS IN METRES ±5%

TC 5034 Tower Crane

5 t

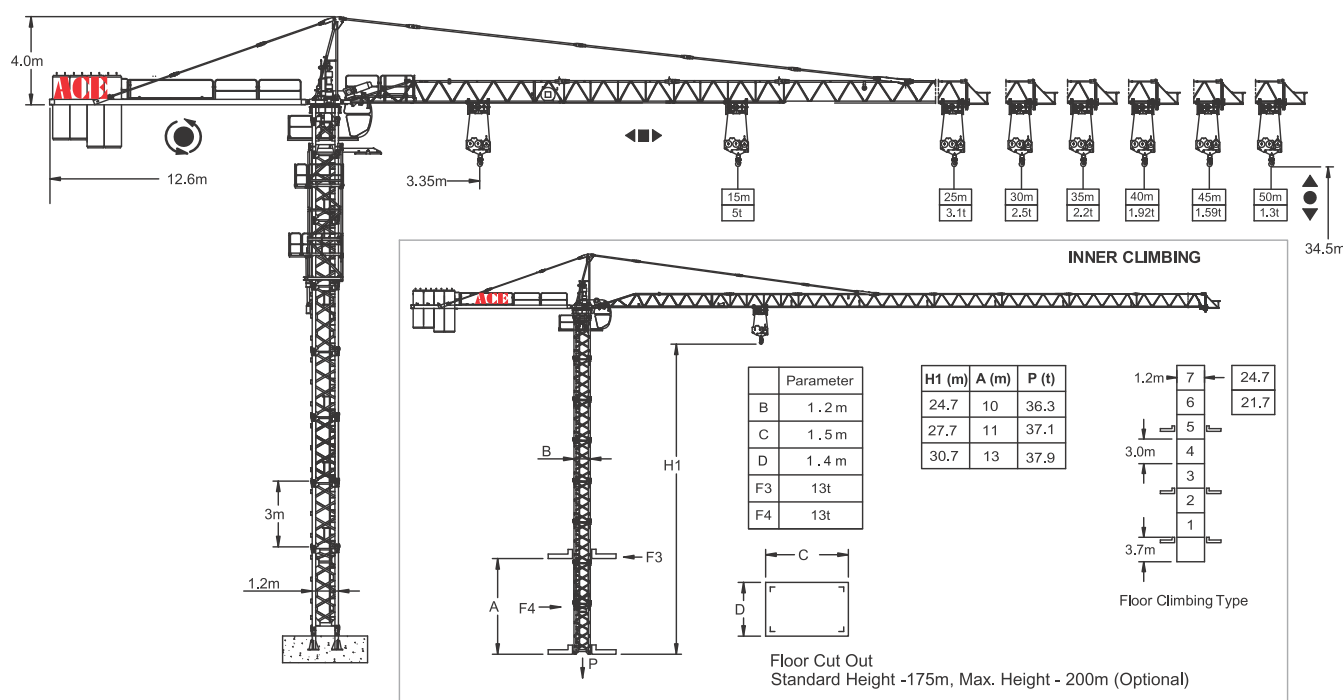
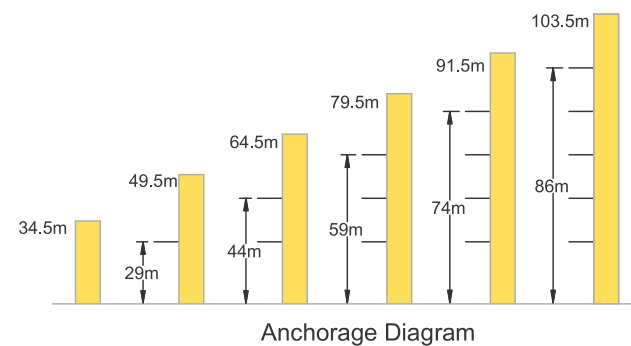
Load Capacity

Jib Length (m)	Radius (m)	15	17	20	22	25	28	30	32	35	40	45	50
50m	Hoisting Load (t)	5.00	4.30	3.60	3.20	2.70	2.50	2.40	2.20	2.00	1.70	1.50	1.30
	Hoisting Load (t)	2.50											
45m	Hoisting Load (t)	5.00	4.60	3.80	3.40	2.90	2.50	2.50	2.40	2.20	1.85	1.59	
	Hoisting Load (t)	2.50											
40m	Hoisting Load (t)	5.00	4.80	3.90	3.50	3.00	2.50	2.50	2.45	2.20	1.92		
	Hoisting Load (t)	2.50											
35m	Hoisting Load (t)	5.00	4.80	3.90	3.50	3.00	2.75	2.50	2.45	2.20			
	Hoisting Load (t)	2.50											
30m	Hoisting Load (t)	5.00	4.80	3.90	3.50	3.00	2.75	2.50					
	Hoisting Load (t)	2.50											
25m	Hoisting Load (t)	5.00	4.80	3.90	3.50	3.10							
	Hoisting Load (t)	2.50											



Specifications

Hoisting	No of Falls	7	35	70	3.5	17.5	35
	Speed (m/min)	7	35	70	3.5	17.5	35
	Hoisting Load (t)	2.6	2.6	1.3	5.0	5.0	2.6
Power (kw)		3.5	18.0	18.0	3.5	18.0	18.0
		415V / 50Hz					
Slewing	Speed (rpm)	0 ~ 0.8					
	Power (kw)	4					
Trolley	Speed (m/min)	40					
	Power (kw)	3.3					
Climbing	Speed (m/min)	0.55 - 0.7					
	Power (kw)	5.5					
Main Supply		415V / 50Hz					
Electric Power		25.3 kw (31.7 kVA)					



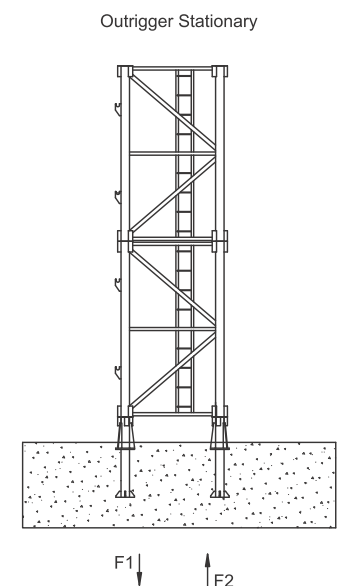
F Reaction ◇ In Service △ Out of Service ⊕ Dead weight without load and counter weights but with longest jib and free standing height.
P - Vertical load

TC 7074 Tower Crane

25 t

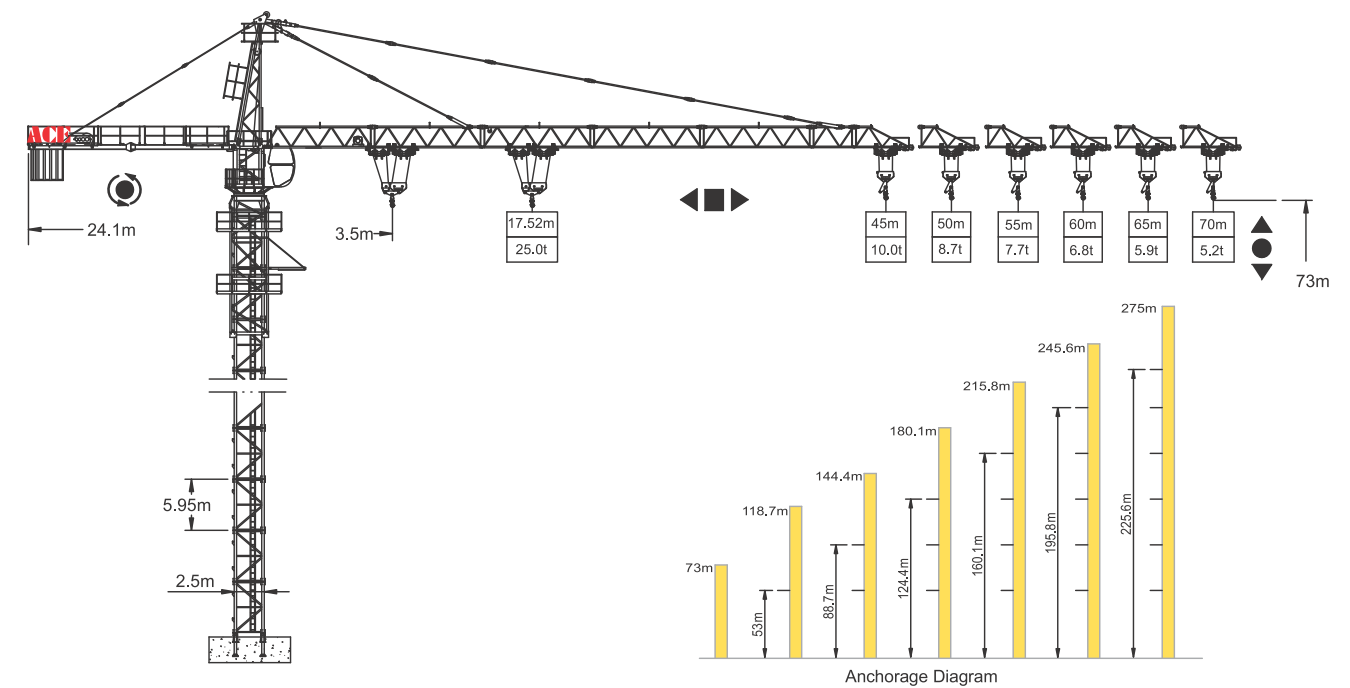
Load Capacity

Jib Length (m)	Radius (m)	3.5-17.52	20	25	30	35	38	40	43	45	48	50	53	55	58	60	63	65	68	70	
70m	Hoisting Load (t)	25.00	21.41	16.42	13.16	10.86	9.78	9.15	8.32	7.83	7.17	6.77	6.24	5.92	5.47	5.20	4.83	4.60	4.29	4.09	
	Hoisting Load (t)	12.50				11.97	10.89	10.26	9.43	8.94	8.28	7.88	7.35	7.03	6.58	6.31	5.94	5.71	5.40	5.20	
65m	Radius (m)	3.5-17.95				25	30	35	38	40	43	45	48	50	53	55	58	60	63	65	
	Hoisting Load (t)	25.00				16.92	13.57	11.21	10.10	9.45	8.60	8.10	7.42	7.02	6.47	6.14	5.68	5.41	5.02	4.79	
60m	Radius (m)	3.5-18.56				25	30	35	38	40	43	45	48	50	53	55	58	60			
	Hoisting Load (t)	25.00				17.62	14.15	11.70	10.55	9.88	9.00	8.48	7.78	7.36	6.79	6.45	5.98	5.69			
55m	Radius (m)	3.5-18.85				25	30	35	38	40	43	45	48	50	53	55					
	Hoisting Load (t)	25.00				17.94	14.42	11.93	10.76	10.08	9.18	8.65	7.94	7.52	6.94	6.59					
50, 45, 40m	Radius (m)	3.5-18.97				25	30	35	38	40	43	45	48	50							
	Hoisting Load (t)	25.00				18.09	14.54	12.04	10.86	10.17	9.27	8.74	8.02	7.59							
40m	Radius (m)	3.5-18.97				25	30	35	38	40	43	45	48	50							
	Hoisting Load (t)	12.50				11.97	11.28	10.38	9.85	9.13	8.70										



Specifications

Hoisting	No of Falls	7	35	70	3.5	17.5	35
	Speed (m/min)	0 ~ 45	45 ~ 90	0 ~ 22	22 ~ 45		
	Hoisting Load (t)	12.5	6.3	25.0	12.5		
Power (kw)		110	110	110	110		
		415V / 50Hz					
Slewing	Speed (rpm)	0 ~ 0.72					
	Power (kw)	3 x 5.5					
Trolley	Speed (m/min)	0 ~ 100					
	Power (kw)	11					
Climbing	Speed (m/min)	0.46					
	Power (kw)	11					
Main Supply		415V / 50Hz					
Electric Power		110 kw (137.5kVA)					



F Reaction ◇ In Service △ Out of Service ⊕ Dead weight without load and counter weights but with longest jib and free standing height.