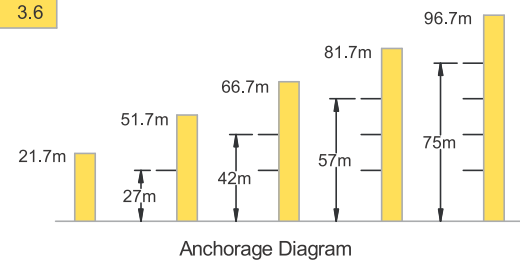


LC 160B Luffing Crane 10 t

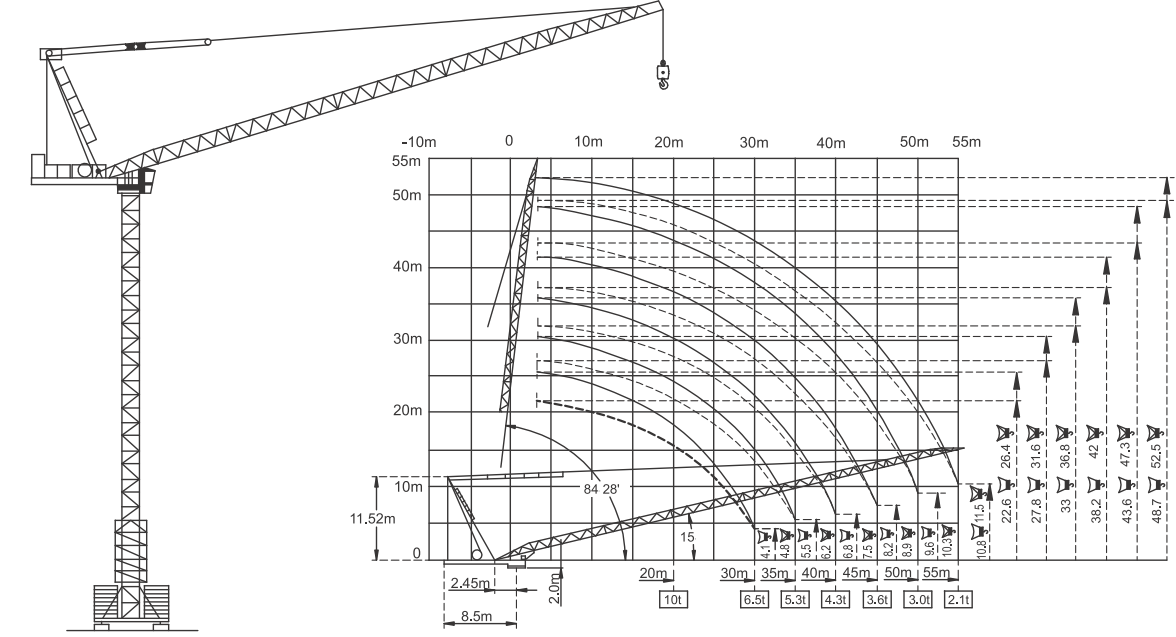
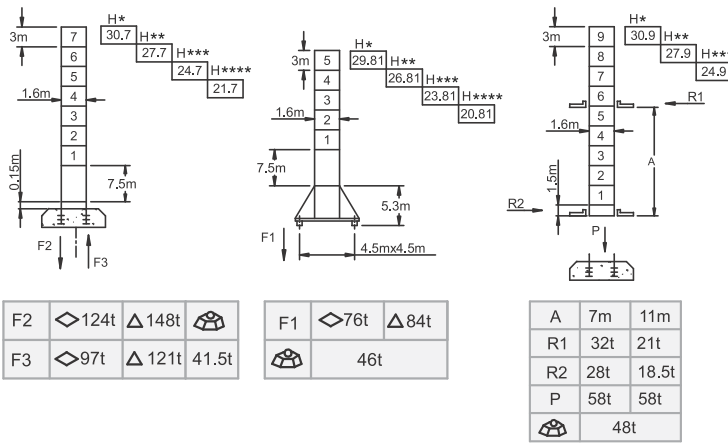
Load Capacity

Jib Length 55m	Radius (m)	3.3~18.0	20	22	25	27	30	32	35	37	40	42	45	47	50	52	55
	Hoisting Load (t)	10.0	8.6	7.6	6.5	5.8	5.0	4.6	4.1	3.8	3.5	3.2	2.9	2.7	2.5	2.3	2.1
Jib Length 50m	Radius (m)	3.3~20.0	22	25	27	30	32	35	37	40	42	45	47	50			
	Hoisting Load (t)	10.0	8.7	7.5	6.8	6.0	5.5	5.0	4.7	4.2	3.8	3.5	3.2	3.0			
Jib Length 45m	Radius (m)	3.3~20.0	22	25	27	30	32	35	37	40	42	45					
	Hoisting Load (t)	10.0	9.0	7.7	7.0	6.2	5.7	5.1	4.7	4.2	4.0	3.6					
Jib Length 40m	Radius (m)	3.3~20.0	22	25	27	30	32	35	37	40							
	Hoisting Load (t)	10.0	9.1	7.8	7.1	6.2	5.7	5.1	4.8	4.3							
Jib Length 35m	Radius (m)	3.3~20.0	22	25	27	30	32	35									
	Hoisting Load (t)	10.0	9.2	8.0	7.2	6.4	5.9	5.3									



Specifications

Hoisting	No of Falls	☞		☜			
	Speed (m/min)	0 ~ 50	0 ~ 75	0 ~ 100	0 ~ 25	0 ~ 37.5	0 ~ 50
	Hoisting Load (t)	5.0	3.0	2.0	10.0	6.0	4.0
	Power (kw)	55	55	55	55	55	55
Slewing	Speed (rpm)	0 ~ 0.7					
	Power (kw)	2 x 9					
Travelling	Speed (m/min)	0 ~ 25					
	Power (kw)	4 x 3.4					
Luffing	Speed (m/min)	≤ 3.0					
	Power (kw)	37					
Main Supply		415V / 50Hz					
Electric Power		110kw (137.5 kVA)					



F Reaction ◊ In Service ▲ Out of Service ⊕ Dead weight without load and counter weights but with longest jib and free standing height.
P Vertical Load H Free Standing Height Jib * 30 - 35m * 40 - 45m *** 50m **** 55m

TOWER CRANE RANGE

Model	Maximum Capacity (t)	Free Standing Height (m)	Jib Length (m)	Tip Load (t)	Mast Size L x B x H (m)	Mast Types
TOWER CRANES - SELF ERECTING						
MTC-2418	1.6	24	18	0.55	(-)	
MTC-3625	2.5	36	25	0.80	(-)	
TOWER CRANES - FIXED / INNER CLIMBING / RAIL MOUNTED						
TC 5034	5	34.5	50	1.3	1.2 x 1.2 x 3.0	L12.16
TC 5040	5/6	40.0	50	1.3	1.6 x 1.6 x 2.8	B16.10
TC 5540	5/6	40.0	55	1.0	1.6 x 1.6 x 2.8	B16.10
TC 5040T	5	40.0	50	1.3	1.6 x 1.6 x 2.8	B16.10
TC 5540T	5	40.0	55	1.0	1.6 x 1.6 x 2.8	B16.10
TC 6040	5/6	40.0	60	1.0	1.6 x 1.6 x 2.8	B16.12
TC 6040B	5/6	40.0	60	1.0	1.6 x 1.6 x 2.8	B16.12
TC 6544	6/8	45.0	65	1.3	1.8 x 1.8 x 2.8	B18.12
TC 6552	10	51.3	65	2.0	1.83 x 1.83 x 3.0	B18.14
TC 7052	12	52.0	70	3.0	2.0 x 2.0 x 3.0	B20.16A
TC 7053	16	52.0	70	2.7	2.0 x 2.0 x 3.0	B20.16A
TC 7054	16	52.0	70	3.5	2.15 x 2.15 x 3.0	B20.16B
TC 7059	20	59.0	70	5.2	2.0 x 2.0 x 3.0	B20.16C
TC 7074	25	73.0	70	5.2	2.50 x 2.50 x 5.95	B25.16
TOWER CRANES - LUFFING						
LC 85	6	35.3	40	1.5	1.6 x 1.6 x 3.0	L16
LC 120	8	30.5	45	2.2	1.6 x 1.6 x 3.0	L16
LC 160B	10	30.7	55	2.1	1.6 x 1.6 x 3.0	L16
LC 228B	12	49.2	55	2.5	2.0 x 2.0 x 3.0	L20



Tower Cranes in Action

MTC 2418 Mobile Tower Crane 1.6 t

- MTC-2418 is an **all-terrain, self propelled** mobile tower crane, with a road speed of 25 km/hr. A differential lock enables it to get out of tough spots.
- MTC-2418 is **self erecting/self-folding**. Operations can be easily affected in a few minutes by a single operator through a remote control pod.
- MTC-2418 is **remote controlled**. It facilitates the operator to position himself in such a way that he can see both picking as well as dumping points for precise load positioning.
- A **built-in generator**, driven by the prime mover's engine makes MTC-2418 totally independent of any outside electric source. The crane only uses a part of the power and the generator can be used to supply other electrical equipment like mixers, vibrators and job site lighting systems.
- An articulated chassis and hydraulic steering system enables a very **short turning radius and easy positioning**.
- Stabilizers are of out and down type and can be retracted into the lower chassis to satisfy **road clearance codes**.

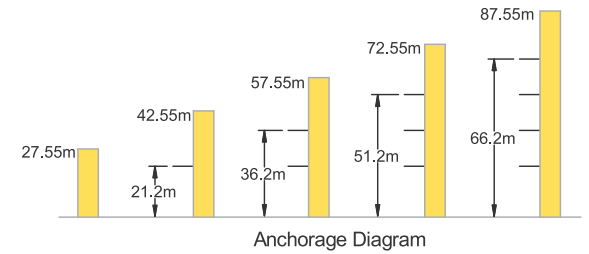
Horizontal jib position	Height	15.5 mtrs.
	Length	7.5 mtrs. 18 mtrs.
	Capacity	1600 Kgs. 550 Kgs.
Raised jib position	Height	24 mtrs.
	Length	7.2 mtrs. 15.8 mtrs.
	Capacity	1600 Kgs. 550 Kgs.
Speed	Trolleying	33m/min.
	Hoisting	15m/min. & 30m/min.
	Stewing	1 RPM
Electrical motors	Trolleying	1.5 H.P.
	Hoisting	7.5 H.P.
	Stewing	2.0 H.P.
Electric Power		10.25 KVA
Engine (Prime mover)		Four cylinder, water cooled, diesel engine developing 49 BHP at 2300 RPM. Model A498
Generator Power Developed		20 KVA
Total weight with Ballast		13500 Kgs.
Total weight without Ballast		8700 Kgs.
Transportation Dimensions	Width	2.5 mtrs.
	Length	10 mtrs.
	Height	3.9 mtrs.
Front axle load		5300 Kgs.
Rear axle load		8200 Kgs.
Safety device		• Circuit breakers • Overload limit switch • Moment limit switch • Hoist limit switch • Trolley limit switch
Variant Model		MTC 2418 T Mounted on a towable trailer without prime mover.

ALL DIMENSIONS IN METRES ±5%

LC 120 Luffing Crane 8 t

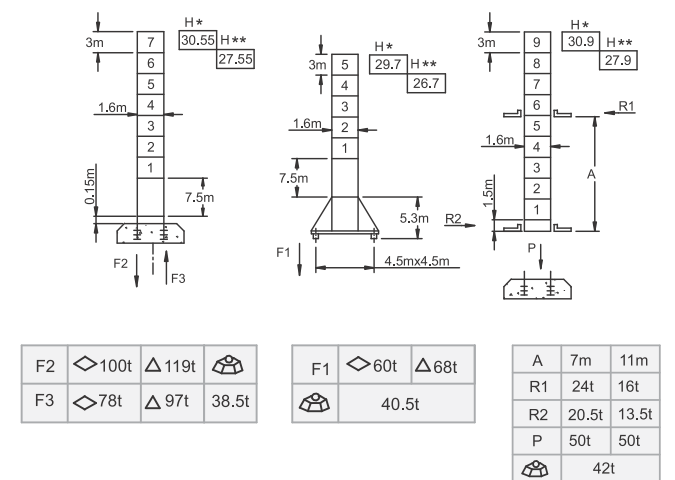
Load Capacity

Jib Length 45m	Radius (m)	3.5-18.6	20	25	30	32	35	40	45
	Hoisting Load (t)	8.0	7.3	5.5	4.2	4.0	3.3	2.6	2.2
Jib Length 40m	Radius (m)	3.5-18.6	20	25	30	32	35	40	
	Hoisting Load (t)	8.0	7.3	5.5	4.3	4.0	3.4	2.6	
Jib Length 35m	Radius (m)	3.5-18.6	20	25	30	32	35		
	Hoisting Load (t)	8.0	7.4	5.6	4.4	4.0	3.4		
Jib Length 30m	Radius (m)	3.5-18.6	20	25	30				
	Hoisting Load (t)	8.0	7.4	5.6	4.4				



Specifications

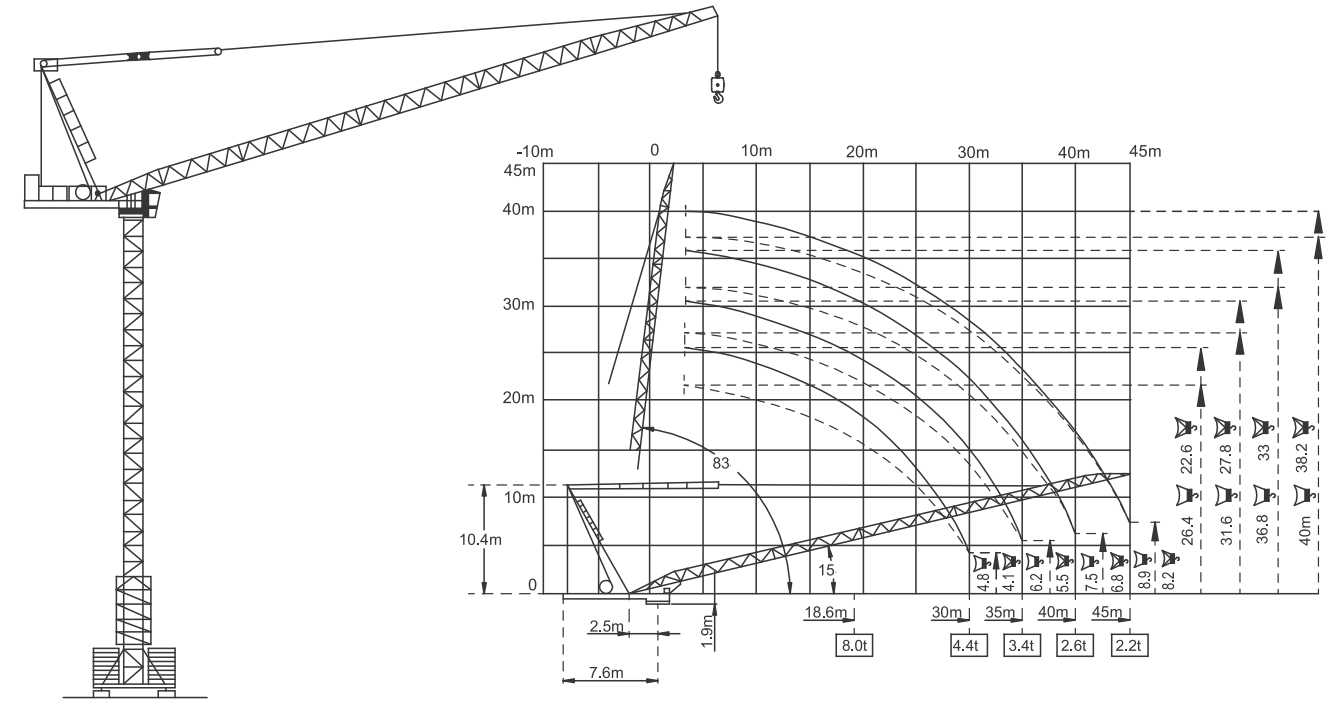
Hoisting	No of Falls	☹		☹			
	Speed (m/min)	0 ~ 40	0 ~ 66	0 ~ 80	0 ~ 20	0 ~ 33	0 ~ 40
	Hoisting Load (t)	4.0	2.4	2.0	8.0	4.8	4.0
	Power (kw)	30	30	30	30	30	30
Slewing	Speed (rpm)	0 ~ 0.7					
	Power (kw)	2 x 4.5					
Travelling	Speed (rpm)	0 ~ 25					
	Power (kw)	2 x 5.2					
Luffing	Speed (m/min)	≤ 3.5					
	Power (kw)	30					
Main Supply		415V / 50Hz					
Electric Power		69kw (86.3 kVA)					



MTC 2418



MTC 2418 T - Mounted on a towable trailer



F Reaction ◊ In Service ▲ Out of Service ☹ Dead weight without load and counter weights but with longest jib and free standing height.
P Vertical Load H Free Standing Height Jib * 30 - 35m ** 40 - 45m