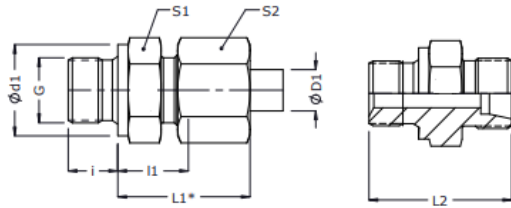




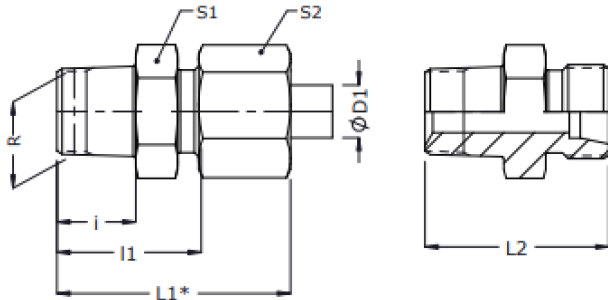
VACHHRAJ ENGINEERING

MALE STUD COUPLING (GE)



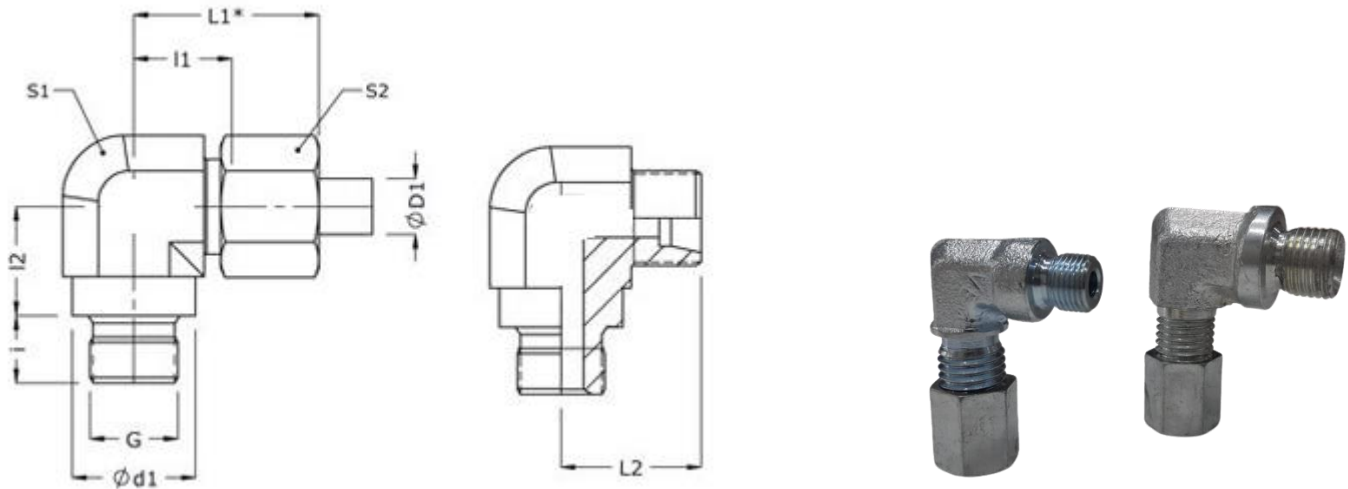
Series	Tube od	G BSP	d1	i	l1	L1*	L2	S1	S2	PART NO
Light (L) 250 BAR	6	G 1/8 A	14	8	8.5	24	23.5	14	14	GE-06LR-1/8
	8	G 1/4 A	18	12	10	25	29	19	17	GE-08LR-1/4
	8	G 3/8 A	22	12	11.5	26.5	30.5	22	17	GE-08LR-3/8
	10	G 1/4 A	18	12	11	26.5	30	19	19	GE-10LR-1/4
	10	G 3/8 A	22	12	12.5	28	31.5	22	19	GE-10LR-3/8
	12	G 1/4 A	18	12	12	27	31	19	22	GE-12LR-1/4
	12	G 3/8 A	22	12	12.5	27.5	31.5	22	22	GE-12LR-3/8
	12	G 1/2 A	26	14	13	28	34	27	22	GE-12LR-1/2
	15	G 1/2 A	26	14	14	30	35	27	27	GE-15LR-1/2
160 BAR	18	G 1/2 A	26	14	14.5	31.5	36	27	32	GE-18LR-1/2
	22	G 3/4 A	32	16	16.5	33.5	40	32	36	GE-22LR-3/4
100 BAR	28	G 1 A	39	18	17.5	35.5	43	41	41	GE-28LR-1
	35	G1 1/4 A	49	20	17.5	40.5	48	50	50	GE-35LR-1.1/4
	42	G1 1/2 A	55	22	19	42.5	52	55	60	GE-42LR-1.1/2
Heavy (S) 630 BAR	6	G 1/4 A	18	12	13	28.5	32	19	17	GE-06SR-1/4
	8	G 1/4 A	18	12	15	30	34	19	19	GE-08SR-1/4
	10	G 3/8 A	22	12	15	32	34.5	22	22	GE-10SR-3/8
	12	G 3/8 A	22	12	17	33.5	36.5	22	24	GE-12SR-3/8
	12	G 1/2 A	26	14	17.5	34	39	27	24	GE-12SR-1/2
400 BAR	16	G 1/2 A	26	14	18.5	37.5	41	27	30	GE-16SR-1/2
	20	G 3/4 A	32	16	20.5	43	47	32	36	GE-20SR-3/4
	25	G 1 A	39	18	23	48	53	41	46	GE-25SR-1
250 BAR	30	G1 1/4 A	49	20	23.5	51.5	57	50	50	GE-30SR-1.1/4
	38	G1 1/2 A	55	22	26	57.5	64	55	60	GE-38SR-1.1/2

TAPPER MALE STUD COUPLING (GER)



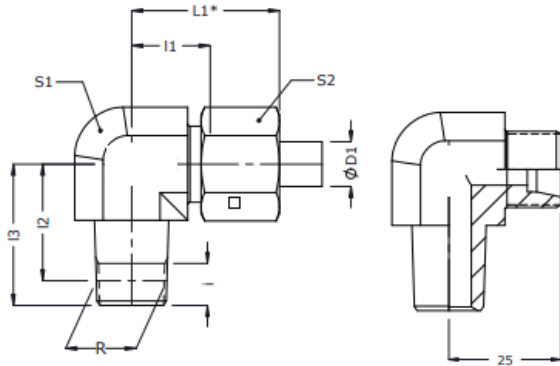
Series	TUBE OD D1	BSPT thread	i	l1	L1*	L2	S1	S2	Assembly
									Part code
Light (L) 250 bar	6	PT 1/8	7.5	14.5	30.0	21.5	14	14	GER-06LR-1/8
	6	PT 1/4	11.0	18.0	33.5	25.0	14	14	GER-06LR-1/4
	8	PT 1/4	11.0	19.0	34.0	26.0	17	17	GER-08LR-1/4
	10	PT 1/4	11.0	20.0	35.5	27.0	17	19	GER-10LR-1/4
	12	PT 1/4	11.0	20.0	35.0	27.0	19	22	GER-12LR-1/4
	12	PT 3/8	11.5	20.5	35.5	27.5	19	22	GER-12LR-3/8
	12	PT 1/2	15.0	25.0	40.0	32.0	22	22	GER-12LR-1/2
160 bar	15	PT 1/2	15.0	26.0	42.0	33.0	24	27	GER-15LR-1/2
	18	PT 1/2	15.0	26.5	43.5	34.0	27	32	GER-18LR-1/2
100 bar	22	PT 3/4	16.5	30.0	47.0	37.5	32	36	GER-22LR-3/4
	28	PT 1	19.0	33.5	51.5	41.0	41	41	GER-28LR - 1
	35	PT 1/4	21.5	35.0	58.0	45.5	46	50	GER-35LR-1.1/4
Heavy (S) 630 bar	42	PT 1/2	21.5	37.5	61.0	48.5	55	60	GER-42LR-1.1/2
	6	PT 1/4	11.0	22.0	37.5	29.0	17	17	GER-06SR-1/4
	8	PT 1/4	11.0	22.0	37.0	29.0	17	19	GER-08SR-1/4
	10	PT 1/4	11.0	23.5	40.5	31.0	19	22	GER-10SR-1/4
	10	PT 3/8	11.5	24.0	41.0	31.5	19	22	GER-10SR-3/8
	12	PT 1/4	11.0	25.5	42.0	33.0	22	24	GER-12SR-1/4
	12	PT 3/8	11.5	26.0	42.5	33.5	22	24	GER-12SR-3/8
400 bar	12	PT 1/2	15.0	29.5	46.0	37.0	22	24	GER-12SR-1/2
	16	PT 1/2	15.0	30.5	49.5	39.0	27	30	GER-16SR-1/2
	20	PT 3/4	16.5	34.0	56.5	44.5	32	36	GER-20SR-3/4
250 bar	25	PT 1"	19.0	39.0	64.0	51.0	41	46	GER-25SR - 1
	30	PT 1.1/4	21.5	42.0	70.0	55.5	46	50	GER-30SR-1.1/4
	38	PT 1.1/2	21.5	44.5	76.0	60.5	55	60	GER-38SR-1.1/2

PARALLEL MALE STUD ELBOW (WE)



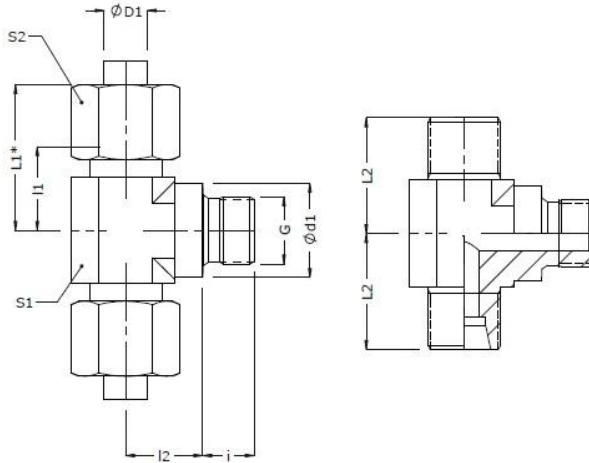
Series	Tube od D1	MALE BSP	d1	l	l1	l2	L1*	L2	S1	S2	Assembly
Light (L) 250 BAR	6	1/8"									WE-06LR-1/8
	8	1/4"									WE-08LR-1/4
	10	3/8"									WE-10LR-3/8
	12	1/2"									WE-12LR-1/2
	15	1/2"									WE-15LR-1/2
160 BAR	18	1/2"								WE-18LR-1/2	
100 BAR	22	3/4"	32	16	27.5	26	44.5	35	32	36	WE-22LR-3/4
	28	1	39	18	30.5	30	48.5	38	41	41	WE-28LR-1
	35	1 1/4	49	20	34.5	34	57.5	45	50	50	WE-35LR-1.1/4
	42	1 1/2	55	22	40	39	63.5	51	55	60	WE-42LR-1.1/2
HEAVY (S) 630 BAR	6	1/8"									WE-06SR-1/8
	8	1/4"									WE-08SR-1/4
	10	3/8"									WE-10SR-3/8
	12	1/2"									WE-12SR-1/2
	14	1/2"									WE-14SR-1/2
400 BAR	16	1/2"									WE-16SR-1/2
	20	3/4"	32	16	26.5	26	49	37	32	36	WE-20SR-3/4
	25	1	39	18	30	30	55	42	41	46	WE-25SR-1
250 BAR	30	1 1/4	49	20	35.5	34	63.5	49	50	50	WE-30SR-1.1/4
	38	G1 1/2	55	22	41	39	72.5	57	55	60	WE-38SR-1.1/2

TEPPER PARALLEL MALE STUD ELBOW (WER)



Series	Tube OD D1	MALE BSPT	i	l1	l2 min	l2 max	l3	L1*	L2	S1	S2	Assembly
Light (L) 250 bar	6	R 1/8	7.5	13.0	16.1	17.9	21.0	28.5	20.0	12	14	WER-06LR-1/8
	8	R 1/4	11.0	15.5	20.2	22.8	27.5	30.5	22.5	14	17	WER-08LR-1/4
	10	R 1/4	11.0	15.0	19.7	22.3	27.0	30.5	22.0	17	19	WER-10LR-1/4
	12	R 3/8	11.5	17.0	20.3	22.9	28.0	32.0	24.0	19	22	WER-12LR-3/8
	15	R 1/2	15.0	22.0	25.0	28.6	35.0	38.0	29.0	22	27	WER-15LR-1/2
160 bar	18	R 1/2	15.0	23.5	26.0	29.6	36.0	40.5	31.0	27	32	WER-18LR-1/2
100 BAR	22	R 3/4										WER-22LR-3/4
	28	R 1										WER-28LR-1
	35	R 1.1/4										WER-35LR-1.1/4
	42	R 1.1/2										WER-42LR-1.1/2
Heavy (S) 630 bar	6	R 1/4	11.0	17.5	18.7	21.3	26.0	33.0	24.5	14	17	WER-6SR-1/4
	8	R 1/4	11.0	17.0	19.7	22.3	27.0	32.0	24.0	17	19	WER-8SR-1/4
	10	R 3/8	11.5	17.5	20.3	22.9	28.0	34.5	25.0	19	22	WER-10SR-3/8
	12	R 3/8	11.5	21.5	20.3	22.9	28.0	38.0	29.0	22	24	WER-12SR-3/8
400 BAR	16	R 1/2	15.0	26.0	23.5	27.1	33.5	45.0	34.5	24	30	WER-16SR-1/2
	20	R 3/4										WER-20SR-3/4
	25	R 1										WER-25SR-1
250 BAR	30	R 1.1/4										WER-30SR-1.1/4
	38	R 1.1/2										WER-38SR-1.1/2

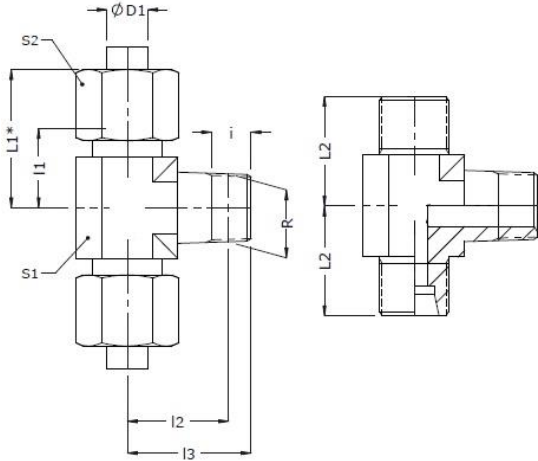
BSP MALE STUD TEE (TE)



VIEW HYDRAULIC

SERIES	TUBE OD D1	MALE BSP	D 1	I	I1	I2	L1*	L2	S1	S2	PART NO
LIGHT(L) 160 BAR	22	G-3/4	32	16	28	26	45	35	32	36	TE - 22 X 3/4 BSP
	28	G-1"	39	18	31	30	49	38	41	41	TE - 28 X 1 BSP
	35	G-1.1/4	49	20	35	34	58	45	50	50	TE - 35 X 1.1/4 BSP
100 BAR	42	G-1.1/2	55	22	40	39	64	51	55	60	TE - 42 X 1.1/2 BSP
HEAVY(S) 400 BAR	20	G-3/4	32	16	27	26	49	37	32	36	TE - 20 X 3/4 BSP
	25	G-1"	39	18	30	30	55	42	41	46	TE - 25 X 1" BSP
250 BAR	30	G-1.1/4	49	20	36	34	64	49	50	50	TE - 30 X 1.1/4 BSP
	38	G-1.1/2	55	22	41	39	73	57	55	60	TE - 38 X 1.1/2 BSP

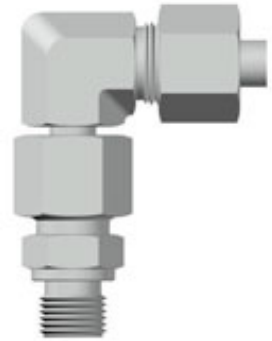
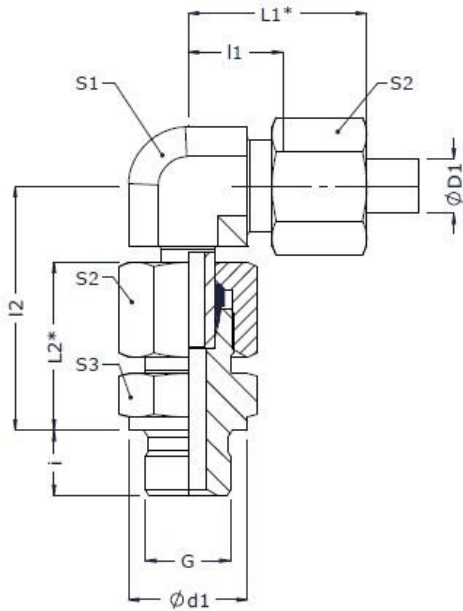
TAPER MALE STUD TEE (TER)



VIEW HYDRAULIC

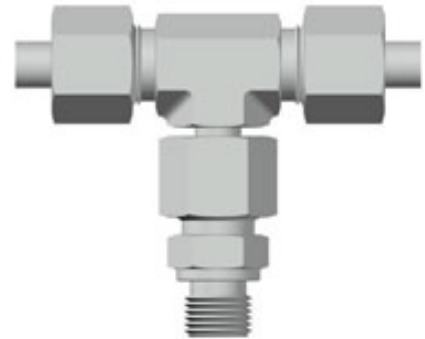
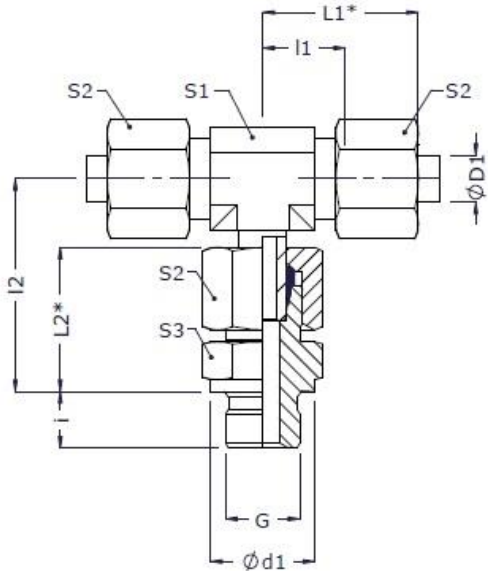
SERIES	TUBE OD D1	MALE BSP	I	I1	I2 MIN	I2 MAX	I3	L1	L2	S1	S2	PART NO
LIGHT (L) 250 BAR	6	R-1/8	7.5	13	16.1	17.9	21	28.5	20	12	14	TER-06LR-1/8 BSPT
	8	R-1/4	11	15.5	20.2	22.8	28	30.5	22.5	14	17	TER-08LR-1/4 BSPT
	10	R-1/4	11	15	19.7	22.3	27	30.5	22	17	19	TER-10LR-1/4 BSPT
	12	R-3/8	11.5	17	20.3	22.9	28	32	24	19	22	TER-12LR-3/8 BSPT
	15	R-1/2	15	22	25	28.6	35	38	29	22	27	TER-15LR-1/2 BSPT
160 BAR	18	R-1/2	15	23.5	26	29.6	36	40	31	27	32	TER-18LR-1/2 BSPT
HEAVY (S) 630 BAR	6	R-1/4	11	17.5	18.7	21.3	26	33	24.5	14	17	TER-06SR-1/4 BSPT
	8	R-1/4	11	17	19.7	22.3	27	32	24	17	19	TER-08SR-1/4 BSPT
	10	R-3/8	11.5	17.5	20.3	22.9	28	34.5	25	19	22	TER-10SR-3/8 BSPT
	12	R-3/8	11.5	21.5	20.3	22.9	28	38	29	22	24	TER-12SR-3/8 BSPT
400 BAR	16	R-1/2	15	26	23.5	27.1	34	45	34.5	24	30	TER-16SR-1/2 BSPT

SWIVEL ELBOW CONN (EVWR)



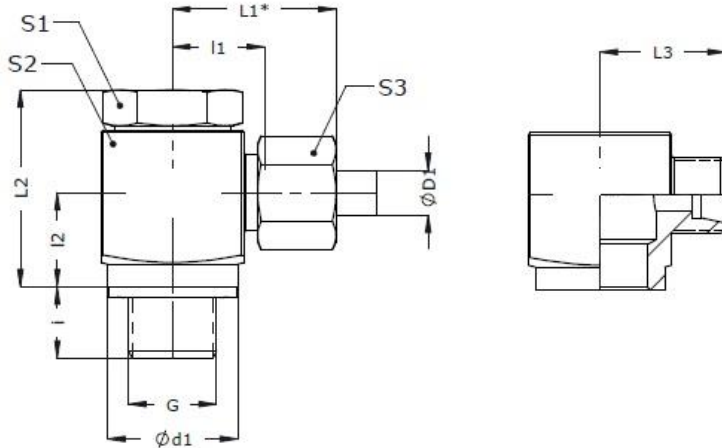
SERIES	TUBE OD D1	MALE BSP	I	I1	I2	L1	L2	S1	S2	S3	PART NO
LIGHT (L) 250 BAR	6	1/8"	8	12	34.5	27.5	24	12	14	14	EVWR-06LR-1/8 BSP
	8	1/4"	12	14	37.5	29	25	14	17	19	EVWR-08LR-1/4 BSP
	10	1/4"	12	15	40	30.5	26.5	17	19	19	EVWR-10LR-1/4 BSP
	12	3/8"	12	17	42	32	27.5	19	22	22	EVWR-12LR-3/8BSP
	15	1/2"	14	21	46.5	37	30	22	27	27	EVWR-15LR-3/8 BSP
160 BAR	18	1/2"	14	23.5	50	40.5	31.5	27	32	27	EVWR-18LR-1/2 BSP
	22	3/4"	16	27.5	55	44.5	33.5	30	36	32	EVWR-22LR-3/4 BSP
100 BAR	28	1"	18	30.5	59	48.5	33.5	36	41	41	EVWR-28LR-1 BSP
	35	1.1/4"	20	34.5	68.5	57.5	40.5	46	50	50	EVWR-35LR-1.1/4 BSP
	42	1.1/2"	22	40	75	63.5	42.5	55	60	55	EVWR-42LR-1.1/2 BSP
HEAVY(S) 630 BAR	6	1/4"	12	16	40	31.5	28.5	14	17	19	EVWR-06SR-1/4"BSP
	8	1/4"	12	17	42.5	32	30	17	19	19	EVWR-08SR-1/4"BSP
	10	3/8"	12	17.5	45	34	32	19	22	22	EVWR-10SR-3/8"BSP
	12	3/8"	12	21.5	48	38	33.5	22	24	22	EVWR-12SR-3/8"BSP
400 BAR	16	1/2"	14	24.5	55	43.5	37.5	24	30	27	EVWR-16SR-1/2"BSP
	20	3/4"	16	26.5	65	49	43	30	36	32	EVWR-20SR-3/4"BSP
	25	1"	18	30	73	55	48	36	46	41	EVWR-25SR-1"BSP
250 BAR	30	1.1/4"	20	35.5	78.5	63.5	51.5	46	50	50	EVWR-30SR-1.1/4"BSP
	38	1.1/2"	22	41	89	72.5	57.5	55	60	55	EVWR-38SR-1.1/2"BSP

SWIVEL TEE CONN (EVTR)



SERIES	TUBE OD D1	MALE BSP	I	I1	I2	L1	L2	S1	S2	S3	PART NO
LIGHT (L) 250 BAR	6	1/8"	8	12	34.5	27.5	24	12	14	14	EVTR-06LR -1/8" BSP
	8	1/4"	12	14	37.5	29	25	14	17	19	EVTR-08LR -1/4" BSP
	10	1/4"	12	15	40	30.5	26.5	17	19	19	EVTR-10LR -1/4" BSP
	12	3/8"	12	17	42	32	27.5	19	22	22	EVTR-12LR -3/8" BSP
	15	1/2"	14	21	46.5	37	30	22	27	27	EVTR-15LR -1/2" BSP
160 BAR	18	1/2"	14	23.5	50	40.5	31.5	27	32	27	EVTR-18LR -1/2" BSP
	22	3/4"	16	27.5	55	44.5	33.5	30	36	32	EVTR-22LR -3/4" BSP
100 BAR	28	1"	18	30.5	59	48.5	33.5	36	41	41	EVTR-28LR -1" BSP
	35	1.1/4"	20	34.5	68.5	57.5	40.5	46	50	50	EVTR-35LR -1.1/4" BSP
	42	1.1/2"	22	40	75	63.5	42.5	55	60	55	EVTR-42LR -1.1/2" BSP
HEAVY(S) 630 BAR	6	1/4"	12	16	40	31.5	28.5	14	17	19	EVTR-06SR-1/4" BSP
	8	1/4"	12	17	42.5	32	30	17	19	19	EVTR-08SR-1/4" BSP
	10	3/8"	12	17.5	45	34	32	19	22	22	EVTR-10SR-3/8" BSP
	12	3/8"	12	21.5	48	38	33.5	22	24	22	EVTR-12SR-3/8" BSP
400 BAR	16	1/2"	14	24.5	55	43.5	37.5	24	30	27	EVTR-16SR-1/2" BSP
	20	3/4"	16	26.5	65	49	43	30	36	32	EVTR-20SR-3/4" BSP
	25	1"	18	30	73	55	48	36	46	41	EVTR-25SR-1" BSP
250 BAR	30	1.1/4"	20	35.5	78.5	63.5	51.5	46	50	50	EVTR-30SR-1.1/4" BSP
	38	1.1/2"	22	41	89	72.5	57.5	55	60	55	EVTR-38SR-1.1/2" BSP

SWIVEL BANZO CONN (SWVE)

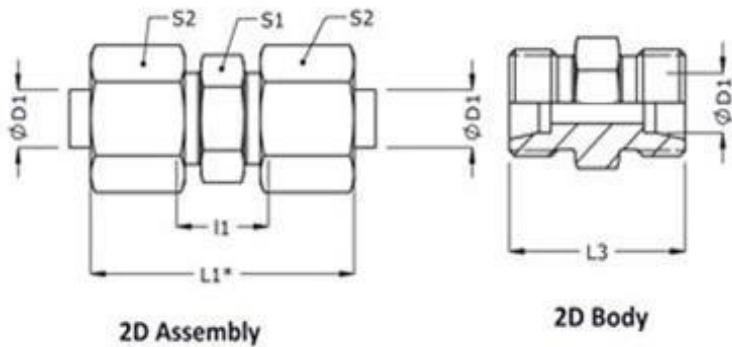


SERIES	TUBE OD D1	MALE BSP	D1	I	I1	I2	L1	L2	S1	S2	S3	PART NO
LIGHT (L) 250 BAR	6	1/8"	15	8	12.5	12	27.5	28	19	19	14	SWVE-06LR-1/8"BSP
	8	1/4"	20	12	14	15	29	33	19	22	17	SWVE-08LR-1/4"BSP
	10	1/4"	20	12	15	15	31	33	19	22	19	SWVE-10LR-1/4"BSP
	12	3/8"	24	12	17.5	18	32.5	40	22	27	22	SWVE-12LR-3/8"BSP
	15	1/2"	29	14	20	21	36	45	27	30	27	SWVE-15LR-1/2"BSP
160 BAR	18	1/2"	29	14	19.5	21	37	45	27	30	32	SWVE-18LR-1/2"BSP
	22	3/4"	35	16	27	24	44.5	53	32	41	36	SWVE-22LR-3/4"BSP
100 BAR	28	1"	43	18	29.5	29.5	48	63.5	41	46	41	SWVE-28LR-1"BSP
	35	1.1/4"	53	20	35	33	57.5	74	50	55	50	SWVE-35LR-1.1/4"BSP
	42	1.1/2"	59	22	40	38.5	63	83	60	70	60	SWVE-42LR-1.1/2"BSP
HEAVY(S) 630 BAR	6	1/4"	20	12	16	15	31	33	19	22	17	SWVE-06SR-1/4"BSP
	8	1/4"	20	12	16	15	31	33	19	22	19	SWVE-08SR-1/4"BSP
	10	3/8"	24	12	18	18	35.5	40	22	27	22	SWVE-10SR-3/8"BSP
	12	3/8"	24	12	18	18	34.5	40	22	27	24	SWVE-12SR-3/8"BSP
400 BAR	16	1/2"	29	14	21.5	21	41	45	27	32	30	SWVE-16SR-1/2"BSP
	20	3/4"	35	16	28	24	50.5	53	32	41	36	SWVE-20SR-3/4"BSP
	25	1"	43	18	31	29.5	56	63.5	41	50	46	SWVE-25SR-1"BSP
250 BAR	30	1.1/4"	53	20	36.5	33	65	74	50	60	50	SWVE-30SR-1.1/4"BSP
	38	1.1/2"	59	22	41	38.5	73	83	60	70	60	SWVE-38SR-1.1/2"BSP



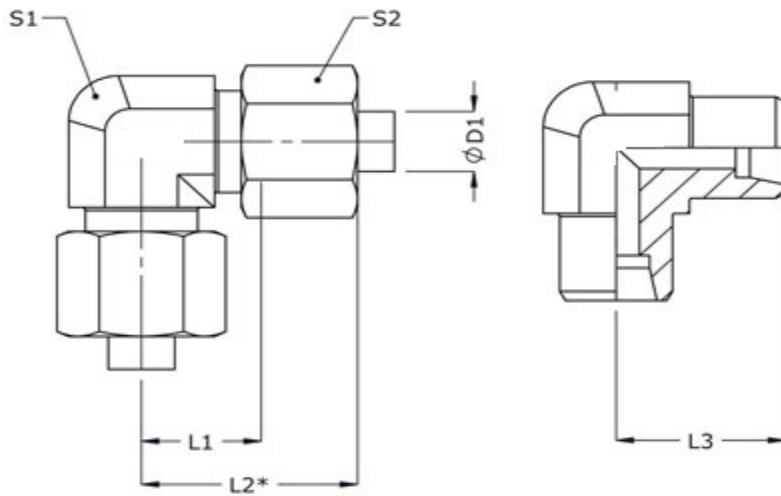
VACHHRAJ ENGINEERING

STRAIGHT COUPLING (G)



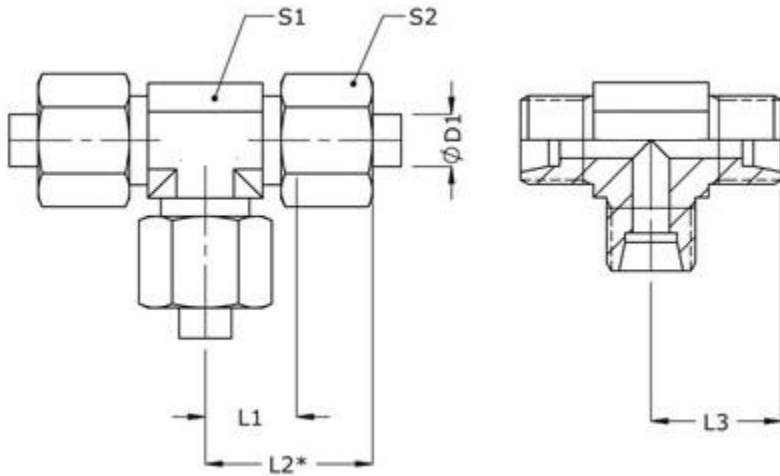
WORKING PRESSURE	TUBE OD ØD1	l1	L1*	L3*	S1*	S2*	PART NO
Light Low (LL) 100 bar	6	12	35	23	11	12	G - LL - 6 MM
	8	12	35	23	12	14	G - LL - 8 MM
Light (L) 250 Bar	6	10	41	24	12	14	G - LR - 6 MM
	8	11	41	25	14	17	G - LR - 8 MM
	10	13	44	27	17	19	G - LR - 10 MM
	12	14	44	28	19	22	G - LR - 12 MM
	15	16	48	30	24	27	G - LR - 15 MM
160 BAR	18	16	50	31	27	32	G - LR - 18 MM
	22	20	54	35	32	36	G - LR - 22 MM
100 BAR	28	21	57	36	41	41	G - LR - 28 MM
	35	20	66	41	50	50	G - LR - 35 MM
	42	21	68	43	50	60	G - LR - 42 MM
HEAVY (S) 630 BAR	6	16	47	30	14	17	G - SR - 6 MM
	8	18	48	32	17	19	G - SR - 8 MM
	10	17	51	32	19	22	G - SR - 10 MM
	12	19	52	34	22	24	G - SR - 12 MM
400 BAR	16	21	59	38	27	30	G - SR - 16 MM
	20	23	68	44	32	36	G - SR - 20 MM
	25	26	76	50	41	46	G - SR - 25 MM
250 BAR	30	27	83	54	46	50	G - SR - 30 MM
	38	29	92	51	55	60	G - SR - 38 MM

Equal Elbow (W)



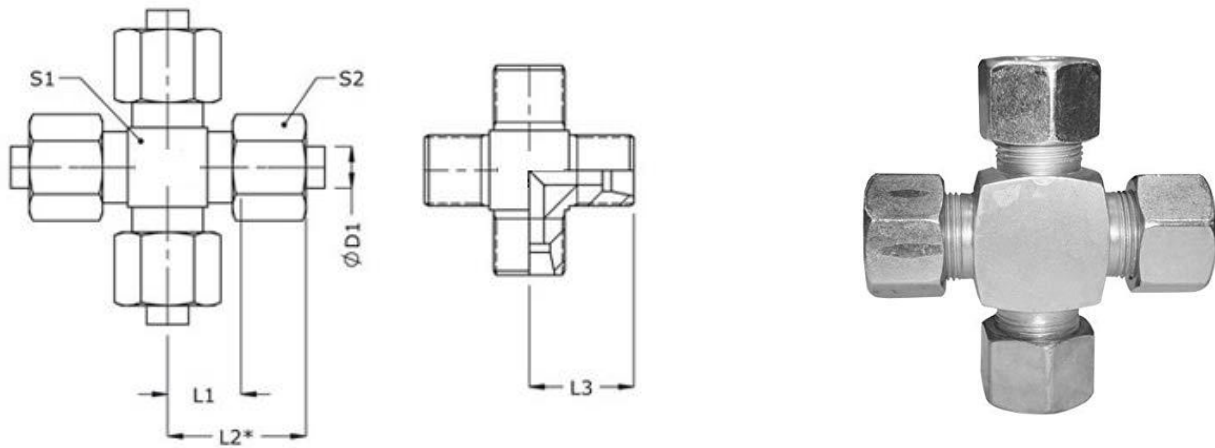
WORKING PRESSURE	TUBE OD ØD1	I1	L1*	L3*	S1*	S2*	PART NO
Light (L) 250 Bar	6	12	27.5	19	12	14	W - LR - 6 MM
	8	14	29	21	14	17	W - LR - 8 MM
	10	15	30.5	22	17	19	W - LR - 10 MM
	12	17	32	24	19	22	W - LR - 12 MM
	15	21	37	28	22	27	W - LR - 15 MM
160 BAR	18	23.5	40.5	31	27	32	W - LR - 18 MM
	22	27.5	44.5	35	30	36	W - LR - 22 MM
100 BAR	28	30.5	48.5	38	36	41	W - LR - 28 MM
	35	34.5	57.5	45	46	50	W - LR - 35 MM
	42	40	63.5	51	55	60	W - LR - 42 MM
HEAVY (S) 630 BAR	6	16	31.5	23	14	17	W - SR - 6 MM
	8	17	32	24	17	19	W - SR - 8 MM
	10	17.5	34.5	25	19	22	W - SR - 10 MM
	12	21.5	38	29	22	24	W - SR - 12 MM
400 BAR	16	24.5	43.5	33	24	30	W - SR - 16 MM
	20	26.5	49	37	30	36	W - SR - 20 MM
	25	30	55	42	36	46	W - SR - 25 MM
250 BAR	30	35.5	63.5	49	46	50	W - SR - 30 MM
	38	41	72.5	57	55	60	W - SR - 38 MM

Equal Tee Couplings (T)



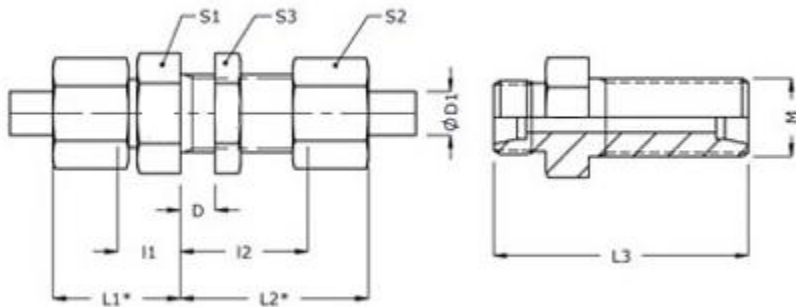
WORKING PRESSURE	TUBE ØD1	l1	L1*	L3*	S1*	S2*	PART NO
Light (L) 250 Bar	6	12	27.5	19	12	14	T - LR - 6 MM
	8	14	29	21	14	17	T - LR - 8 MM
	10	15	30.5	22	17	19	T - LR - 10 MM
	12	17	32	24	19	22	T - LR - 12 MM
	15	21	37	28	22	27	T - LR - 15 MM
160 BAR	18	23.5	40.5	31	27	32	T - LR - 18 MM
	22	27.5	44.5	35	30	36	T - LR - 22 MM
100 BAR	28	30.5	48.5	38	36	41	T - LR - 28 MM
	35	34.5	57.5	45	46	50	T - LR - 35 MM
	42	40	63.5	51	55	60	T - LR - 42 MM
HEAVY (S) 630 BAR	6	16	31.5	23	14	17	T - SR - 6 MM
	8	17	32	24	17	19	T - SR - 8 MM
	10	17.5	34.5	25	19	22	T - SR - 10 MM
	12	21.5	38	29	22	24	T - SR - 12 MM
400 BAR	16	24.5	43.5	33	24	30	T - SR - 16 MM
	20	26.5	49	37	30	36	T - SR - 20 MM
	25	30	55	42	36	46	T - SR - 25 MM
250 BAR	30	35.5	63.5	49	46	50	T - SR - 30 MM
	38	41	72.5	57	55	60	T - SR - 38 MM

Equal Cross Couplings (CROSS)



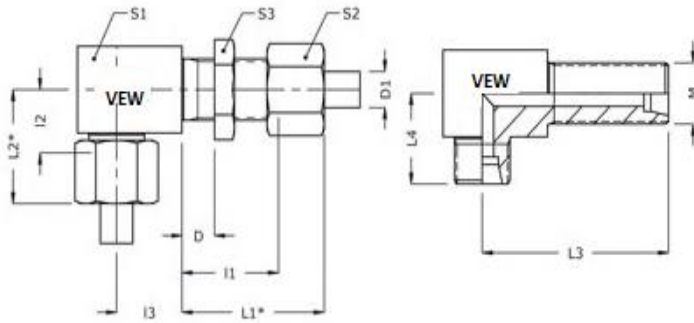
WORKING PRESSURE	TUBE OD ØD1	I1	L1*	L3*	S1*	S2*	PART NO
Light (L) 250 BAR	6	12	27.5	19	12	14	K - LR - 6 MM
	8	14	29	21	14	17	K - LR - 8 MM
	10	15	30.5	22	17	19	K - LR - 10 MM
	12	17	32	24	19	22	K - LR - 12 MM
	15	21	37	28	22	27	K - LR - 15 MM
160 BAR	18	23.5	40.5	31	27	32	K - LR - 18 MM
	22	27.5	44.5	35	30	36	K - LR - 22 MM
100 BAR	28	30.5	48.5	38	36	41	K - LR - 28 MM
	35	34.5	57.5	45	46	50	K - LR - 35 MM
	42	40	63.5	51	55	60	K - LR - 42 MM
HEAVY (S) 630 BAR	6	16	31.5	23	14	17	K - SR - 6 MM
	8	17	32	24	17	19	K - SR - 8 MM
	10	17.5	34.5	25	19	22	K - SR - 10 MM
	12	21.5	38	29	22	24	K - SR - 12 MM
400 BAR	16	24.5	43.5	33	24	30	K - SR - 16 MM
	20	26.5	49	37	30	36	K - SR - 20 MM
	25	30	55	42	36	46	K - SR - 25 MM
250 BAR	30	35.5	63.5	49	46	50	K - SR - 30 MM
	38	41	72.5	57	55	60	K - SR - 38 MM

Straight Bulkhead Couplings(SV)



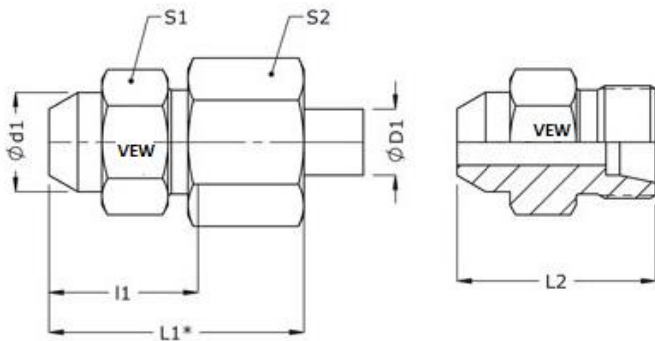
WORKING PRESSURE	TUBE ØD1	I1	I2	L1*	L2*	L3*	S1*	S2*	S3	PART NO
Light (L) 250 Bar	6	7	27	22.5	42.5	48	12	14	17	SV - LR - 6 MM
	8	8	27	23	42	49	14	17	19	SV - LR - 8 MM
	10	10	28	25.5	43.5	52	17	19	22	SV - LR - 10 MM
	12	10	29	25	44	53	19	22	24	SV - LR - 12 MM
	15	12	31	28	47	57	22	27	30	SV - LR - 15 MM
160 BAR	18	13.5	32.5	30.5	49.5	61	27	32	36	SV - LR - 18 MM
	22	16.5	34.5	33.5	51.5	66	30	36	41	SV - LR - 22 MM
100 BAR	28	18.5	35.5	36.5	53.5	69	36	41	46	SV - LR - 28 MM
	35	18.5	36.5	41.5	59.5	76	46	50	55	SV - LR - 35 MM
	42	19	36	42.5	59.5	77	55	60	65	SV - LR - 42 MM
HEAVY (S) 630 BAR	6	12	29	27.5	44.5	55	14	17	19	SV - SR - 6 MM
	8	13	29	28	44	56	17	19	22	SV - SR - 8 MM
	10	14.5	29.5	31.5	46.5	59	19	22	24	SV - SR - 10 MM
	12	14.5	30.5	31	47	60	22	24	27	SV - SR - 12 MM
400 BAR	16	16.5	31.5	35.5	50.5	65	24	30	32	SV - SR - 16 MM
	20	17.5	33.5	40	56	72	30	36	41	SV - SR - 20 MM
	25	20	35	45	60	79	36	46	46	SV - SR - 25 MM
250 BAR	30	21.5	37.5	49.5	65.5	86	46	50	50	SV - SR - 30 MM
	38	22	37	53.5	68.5	91	55	60	65	SV - SR - 38 MM

Elbow Bulkhead Couplings(WSV)



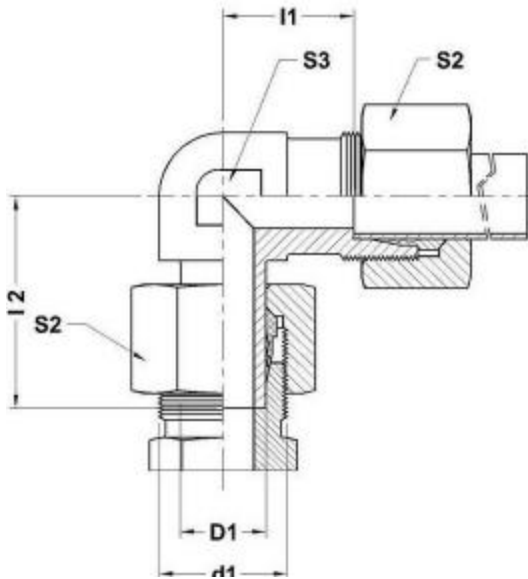
WORKING PRESSURE	TUBE OD ØD1	I1	I2	I3	L1*	L2*	L3*	L4	S1*	S2*	S3	PART NO
Light (L) 250 Bar	6	27	12	14	43	28	48	19	17	14	17	WSV - LR - 06
	8	27	14	17	42	29	51	21	19	17	19	WSV - LR - 08
	10	28	15	18	44	31	53	22	22	19	22	WSV - LR - 10
	12	29	17	20	44	32	56	24	24	22	24	WSV - LR - 12
	15	31	21	23	47	37	61	28	27	27	30	WSV - LR - 15
160 BAR	18	33	24	24	50	41	64	31	32	32	36	WSV - LR - 18
	22	35	28	30	52	45	72	35	36	36	41	WSV - LR - 22
100 BAR	28	36	31	34	54	49	77	38	42	41	46	WSV - LR - 28
	35	37	35	39	60	58	86	45	50	50	55	WSV - LR - 35
	42	36	40	43	60	64	90	51	60	60	65	WSV - LR - 42
HEAVY (S) 630 BAR	6	29	16	17	45	32	53	23	19	17	19	WSV - SR - 06
	8	29	17	18	44	32	54	24	22	19	22	WSV - SR - 08
	10	30	18	20	47	35	57	25	24	22	24	WSV - SR - 10
	12	31	22	21	47	38	59	29	27	24	27	WSV - SR - 12
400 BAR	16	32	25	24	51	44	64	33	30	30	32	WSV - SR - 16
	20	34	27	30	56	49	74	37	36	36	41	WSV - SR - 20
	25	35	30	34	60	55	81	42	42	46	46	WSV - SR - 25
250 BAR	30	38	36	39	66	64	90	49	50	50	50	WSV - SR - 30
	38	37	41	43	69	73	96	57	60	60	65	WSV - SR - 38

Weld Coupling(AS)



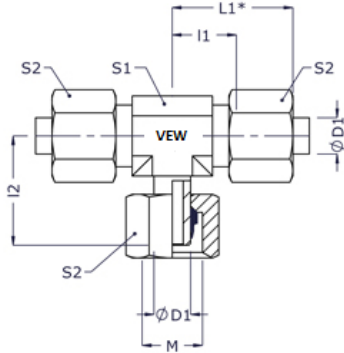
WORKING PRESSURE	TUBE OD ØD1	ØD1	l1	L1*	L2*	S1*	S2*	PART NO
Light (L) 250 Bar	6	10	14	30	21	12	14	AS-LR-06 MM
	8	12	16	31	23	14	17	AS-LR-08 MM
	10	14	18	34	25	17	19	AS-LR-10 MM
	12	16	18	33	25	19	22	AS-LR-12 MM
	15	19	22	38	29	22	27	AS-LR-15 MM
160 BAR	18	22	23.5	41	31	27	32	AS-LR-18 MM
	22	27	28.5	46	36	32	36	AS-LR-22 MM
100 BAR	28	32	30.5	49	38	41	41	AS-LR-28MM
	35	40	32.5	56	43	46	50	AS-LR-35 MM
	42	46	35	59	46	55	60	AS-LR-42 MM
HEAVY (S) 630 BAR	6	11	19	35	26	14	17	AS-SR-06 MM
	8	13	21	36	28	17	19	AS-SR-08 MM
	10	15	22.5	40	30	19	22	AS-SR-10 MM
	12	17	24.5	41	32	22	24	AS-SR-12 MM
400 BAR	16	21	26.5	46	35	27	30	AS-SR-16 MM
	20	26	29.5	52	40	32	36	AS-SR-20 MM
	25	31	32	57	44	41	46	AS-SR-25MM
250 BAR	30	36	35.5	64	49	46	50	AS-SR-30 MM
	38	44	38	70	54	55	60	AS-SR-38 MM

SWIVEL ELBOW - EVW



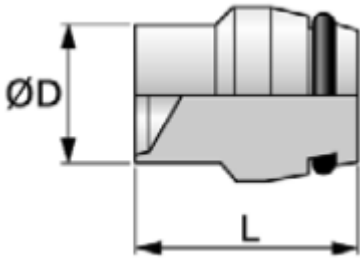
PART NO	PRESSR	TUBE OD	D1	L1	L2	S2	S3
EVW- 06 LR	250 BAR	6	M12X1.5	12	26	14	12
EVW -08 LR	250 BAR	8	M14X1.5	14	27.5	17	12
EVW- 10 LR	250 BAR	10	M16X1.5	15	29	19	14
EVW -12 LR	250 BAR	12	M18X1.5	17	29.5	22	17
EVW -15 LR	250 BAR	15	M22X1.5	21	32.5	27	19
EVW- 18 LR	160 BAR	18	M26X1.5	23.5	35.5	32	24
EVW- 22 LR	160 BAR	22	M30X2	27.5	38.5	36	27
EVW-28 LR	100 BAR	28	M36X2	30.5	41.5	41	36
EVW-35 LR	100 BAR	35	M45X2	34.5	51	50	41
EVW-42 LR	100 BAR	42	M52X2	40	56	60	50
EVW-06 SR	100 BAR	6	M14X1.5	16	27	17	12
EVW-08 SR	630 BAR	8	M16X1.5	17	27.5	19	14
EVW-10 SR	630 BAR	10	M18X1.5	17.5	30	22	17
EVW-12 SR	630 BAR	12	M20X1.5	21.5	31	24	17
EVW-14SR	630 BAR	14	M22X1.5	22	35	27	19
EVW-16 SR	400 BAR	16	M24X1.5	24.5	36.5	30	24
EVW-20 SR	400 BAR	20	M30X2	26.5	44.5	36	27
EVW-25 SR	400 BAR	25	M36X2	30	50	46	36
EVW-30 SR	250 BAR	30	M42X2	35.5	55	50	41
EVW-38 SR	250 BAR	38	M52X2	41	63	60	50

SWIVEL BRANCH TEE (EVT)



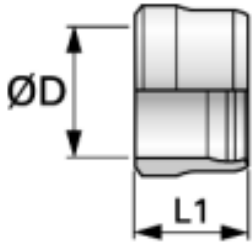
WORKING PRESSURE	TUBE OD ØD1	I1	I2	L1	L2	S1	S2	M METRIC THREAD
LIGHT (L) 250 BAR	6	12	26	27.5	19	12	14	M12X1.5
	8	14	27.5	29	21	14	17	M14X1.5
	10	15	29	30.5	22	17	19	M16X1.5
	12	17	29.5	32	24	19	22	M18X1.5
	15	21	32.5	37	28	22	27	M22X1.5
160 BAR	18	23.5	35.5	40.5	31	27	32	M26X1.5
	22	27.5	38.5	44.5	35	30	36	M30 X 2
100 BAR	28	30.5	51	48.5	38	36	41	M36 X 2
	35	34.5	56	57.5	45	46	50	M45 X 2
	42	40	27	63.5	51	55	60	M52 X 2
LIGHT (L) 630 BAR	6	16	27	31.5	23	14	17	M14X1.5
	8	17	27.5	32	24	17	19	M16X1.5
	10	17.5	30	34.5	25	19	22	M18X1.5
	12	21.5	31	38	29	22	24	M20X1.5
400 BAR	16	24.5	36.5	43.5	33	24	30	M24X1.5
	20	26.5	44.5	49	37	30	36	M30X2
	25	30	50	55	42	36	46	M36X2
250 BAR	30	35.5	55	63.5	49	46	50	M42X2
	38	41	63	72.5	57	55	60	M52 X 2

CLOSURE PLUG (BUZ)



TUBE OD	O*RING	H	PART NO
6	17.5	4X1.5	BUZ - 06 LR
8	18.5	6X1.5	BUZ - 08 LR
10	19	7.5X1.5	BUZ - 10 LR
12	19.5	12X2	BUZ - 12 LR
15	19	9X1.5	BUZ - 15 LR
18	20	15X2	BUZ - 18 LR
22	20.5	20X2	BUZ - 22 LR
28	21	26X2	BUZ - 28 LR
35	23.5	32X2.5	BUZ - 35 LR
42	23.5	38X2.5	BUZ - 42 LR
6	17.5	4X1.5	BUZ - 06 SR
8	18.5	6X1.5	BUZ - 08 SR
10	19	7.5X1.5	BUZ - 10 SR
12	19	9X1.5	BUZ - 12 SR
14	20	10X2	BUZ - 14 SR
16	20	12X2	BUZ - 16 SR
20	24	16.3X2.4	BUZ - 20 SR
25	25	20.3X2.4	BUZ - 25 SR
30	26.5	25.3X2.4	BUZ - 30 SR
38	26.5	33.3X2.4	BUZ - 38 SR

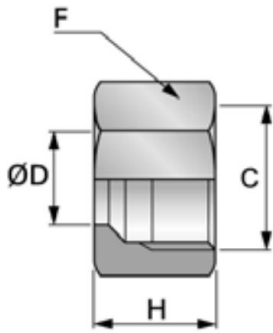
FERRUL (*F*)



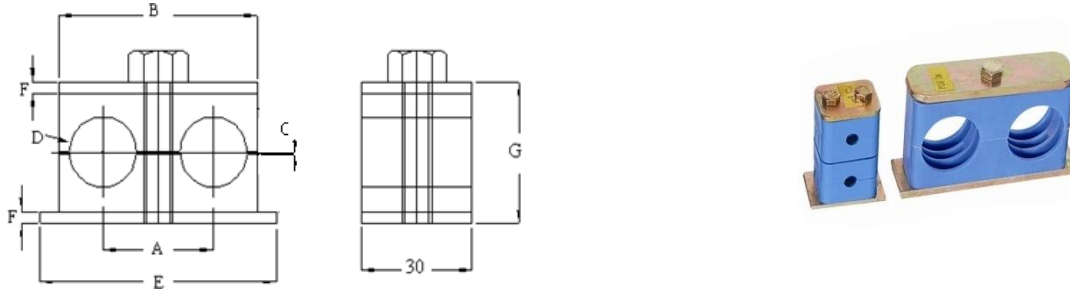
TUBE OD	L1	PART NO
6		F - 06
8		F - 08
10		F - 10
12		F - 12
15	10.5	F - 15
18	10.5	F - 18
22	11	F - 22
28	11	F - 28
35	13.5	F - 35
42	13.5	F - 42
6		F - 06
8		F - 08
10		F - 10
12		F - 12
14	10.5	F - 14
16	10.5	F - 16
20	13	F - 20
25	13.5	F - 25
30	13.5	F - 30
38	13.5	F - 38

VIEW HYDRAULIC

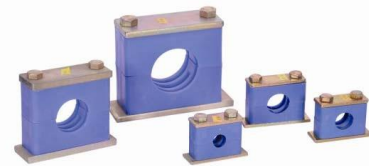
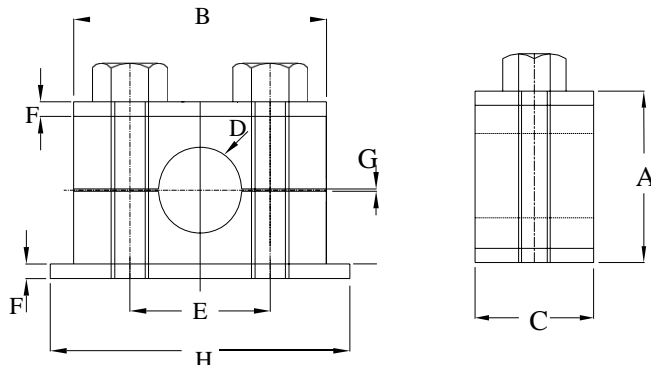
NUT (*N*)



TUBE ID	C	F	H	PART NO
6	12X1.5	14	14.5	N - 06 LR
8	14X1.5	17	14.5	N - 08 LR
10	16X1.5	19	15.5	N - 10 LR
12	18X1.5	22	15.5	N - 12 LR
15	22X1.5	27	17	N - 15 LR
18	26X1.5	32	18	N - 18 LR
22	30X2.0	36	20	N - 22 LR
28	36X2.0	41	21	N - 28 LR
35	45X2.0	50	24	N - 35 LR
42	52X2.0	60	24	N - 42 LR
6	14X1.5	17	16.5	N - 06 SR
8	16X1.5	19	16.5	N - 08 SR
10	18X1.5	22	17.5	N - 10 SR
12	20X1.5	24	17.5	N - 12 SR
14	22X1.5	27	20.5	N - 14 SR
16	24X1.5	30	20.5	N - 16 SR
20	30X2.0	36	24	N - 20 SR
25	36X2.0	46	27	N - 25 SR
30	42X2.0	50	29	N - 30 SR
38	52X2.0	60	32.5	N - 38 SR

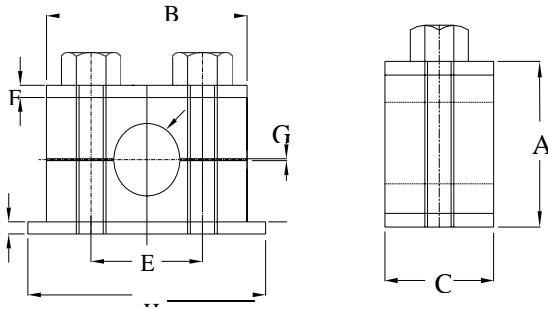


DOUBLE PIPE CLAMP (PCD)							
Order Code	A	B	C	D	E	F	G
PCD - 06	20	38	0.4	6	49	3	32.5
PCD - 08	20	37.5	0.4	8	49	3	32.5
PCD - 9.5	20	37.5	0.4	10	49	3	32.5
PCD - 10	20	37.5	0.4	10	49	3	32.5
PCD - 12	20	37.5	0.4	12	49	3	32.5
PCD - 12.7	30	55	0.4	12.7	64	5	35.5
PCD - 13.5	30	55	0.4	13.5	64	5	35.5
PCD - 14	30	55	0.4	14	64	5	35.5
PCD - 15	30	55	0.4	15	64	5	35.5
PCD - 16	30	55	0.4	16	64	5	35.5
PCD - 17.2	30	55	0.4	17.2	64	5	35.5
PCD - 18	30	55	0.4	18	64	5	35.5
PCD - 19	30	55	0.4	19	64	5	35.5
PCD - 20	36	66	0.5	20	77	5	45.5
PCD - 21.3	36	66	0.5	21.3	77	5	45.5
PCD - 22	36	66	0.5	22	77	5	45.5
PCD - 25	36	66	0.5	25	77	5	45.5
PCD - 26.9	45	81.5	0.5	26.7	94	5	53
PCD - 28	45	81.5	0.5	28	94	5	53
PCD - 30	45	81.5	0.8	30	94	5	53
PCD - 32	56	107	0.8	32	120	5	65.5
PCD - 33.7	56	107	0.8	33.7	120	5	65.5
PCD - 35	56	107	0.8	35	120	5	65.5
PCD - 38	56	107	0.8	38	120	5	65.5
PCD - 42	56	107	0.8	42	120	5	65.5



HEAVY PIPE CLAMP (PCH)								
ORDER CODE	A	B	C	D	E	F	G	H
PCH - 10	41	56	30	10	33	5	0.6	73.5
PCH - 12	41	56	30	12	33	5	0.6	73.5
PCH - 16	41	56	30	16	33	5	0.6	73.5
PCH - 18	41	56	30	18	33	5	0.6	73.5
PCH - 20	57	71	30	20	45	5	0.6	86
PCH - 22	57	71	30	22	45	5	0.6	86
PCH - 25	57	71	30	25	45	5	0.6	86
PCH - 26.7	57	71	30	26.7	45	5	0.6	86
PCH - 28	57	71	30	28	45	5	0.6	86
PCH - 30	68	85	30	30	60	5	0.6	100
PCH - 32	68	85	30	32	60	5	0.6	100
PCH - 33.7	68	85	30	33	60	5	0.6	100
PCH - 35	69	85	30	35	60	5	0.6	100
PCH - 38	68	85	30	38	60	5	0.6	100
PCH - 42	68	85	30	42	60	5	0.6	100
PCH - 48	110	117	45	48	90	10	2.0	130
PCH - 50	110	117	45	50	90	10	2.0	130
PCH - 60	110	117	45	60	90	10	2.0	130
PCH - 65	140	152	63	73	122	10	2.0	184.5
PCH - 73	140	152	63	73	122	10	2.0	184.5
PCH - 75	140	152	63	75	122	10	2.0	184.5
PCH - 76.1	140	152	63	76.1	122	10	2.0	184.5
PCH - 88.9	140	152	63	88.9	122	10	2.0	184.5

PCH - 90	203	206	80	90	168	15	2.0	229
PCH - 100	203	206	80	100	168	15	2.0	229
PCH - 101.6	203	206	80	101.6	168	15	2.0	229
PCH - 108	203	206	80	108	168	15	2.0	229
PCH - 114	203	206	80	114	168	15	2.0	229
PCH - 133	203	206	80	133	168	15	2.0	229
PCH - 140	218	251	90	140	205	15	3.0	272
PCH - 152	218	251	90	152	205	15	3.0	272
PCH - 165	218	251	90	165	205	15	3.0	272
PCH - 168	218	251	90	168	205	15	3.0	272
PCH - 168	320	336	120	168	265	25	3.0	340
PCH - 178	320	336	120	178	265	25	3.0	340
PCH - 194	320	336	120	194	265	25	3.0	340
PCH - 216	320	336	120	216	265	25	3.0	340
PCH - 219	320	336	120	219	265	25	3.0	340
PCH - 219	470	470	160	219	395	30	3.0	520
PCH - 244	470	470	160	244	395	30	3.0	520
PCH - 273	470	470	160	273	395	30	3.0	520
PCH - 324	470	470	160	324	395	30	3.0	520
PCH - 356	590	630	180	356	534	30	3.0	680
PCH - 406	590	630	180	406	534	30	3.0	680

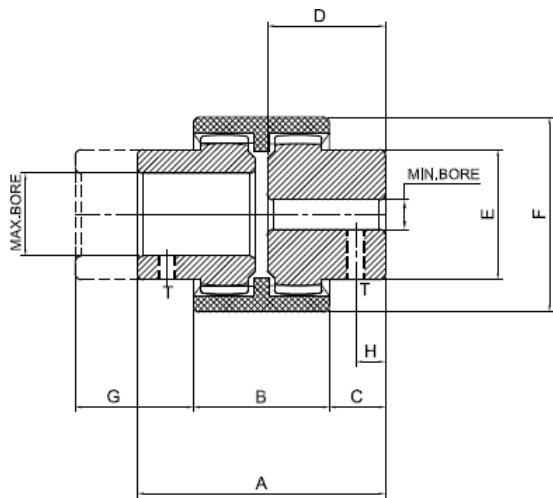


LIGHT PIPE CLEMPs (PCS)								
Order Code	A	B	C	D	E	F	G	H
PCS - 06	31.5	35	30	6	20	3	0.6	46
PCS - 08	32.5	37	30	8	20	3	0.6	46
PCS - 10	32.5	37	30	10	20	3	0.6	46
PCS - 12	32.5	37	30	12	20	3	0.6	46
PCS - 12.7	38.5	42	30	12.7	26	3	0.6	54
PCS - 14	38.5	41	30	14	25	3	0.6	51
PCS - 15	38.5	41	30	15	25	3	0.6	51
PCS - 16	38	42	30	16	26	3	0.8	54
PCS - 18	38	42	30	18	26	3	0.8	54
PCS - 20	40	48	30	20	33	3	0.8	59.5
PCS - 22	40	48	30	22	33	3	0.8	59.5
PCS - 25	40	48	30	25	33	3	0.8	59.5
PCS - 26.9	46.5	57	30	26.9	40	3	0.8	69
PCS - 28	46.5	57	30	28	40	3	0.8	69
PCS - 30	46.5	57	30	30	40	3	0.8	69
PCS - 32	61.5	70	30	32	52	3	1	81
PCS - 33.7	61.5	70	30	33.7	52	3	1	81
PCS - 35	61.5	70	30	35	52	3	1	81
PCS - 38	61.5	70	30	38	52	3	1	81
PCS - 42	61.5	70	30	42	52	3	1	81
PCS - 48.3	71	86	30	48.3	66	3	1	98
PCS - 50	71	86	30	50	66	3	1	98
PCS - 57.2	71	86	30	57.2	66	3	1	98
PCS - 60.3	100	120	30	60.3	95	5	1	135
PCS - 63.5	100	120	30	63.5	95	5	1	135
PCS - 65	100	120	30	60	95	5	1	135
PCS - 70	100	120	30	70	95	5	1	135
PCS - 73	100	120	30	73	95	5	1	135
PCS - 76.1	100	120	30	76.1	95	5	1	135



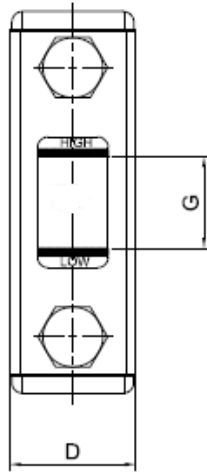
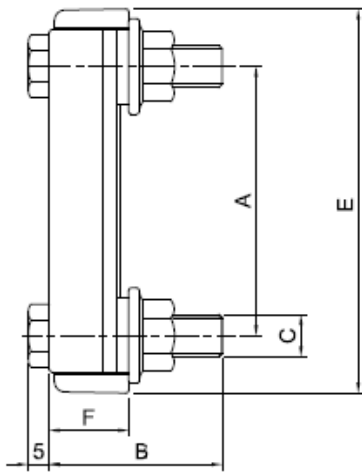
VACHHRAJ ENGINEERING

GEAR COUPLING



COUPLING SIZE	A	B	C	D	E	F	G	H	T
VH - 19 T - 24	54	37	07	25	30	48	18	6	M5
VH - 28 T - 34	84	46	19	40	44	66	21	6	M6
VH - 38 T - 44	84	48	18	40	58	83	22	10	M8
VH - 48 T - 50	104	50	27	50	68	100	23	10	M8
VH - 65 T - 54	104	72	36	70	96	140	34	20	M10

OLI LEVEL INDICATOR (FACE TIPE)

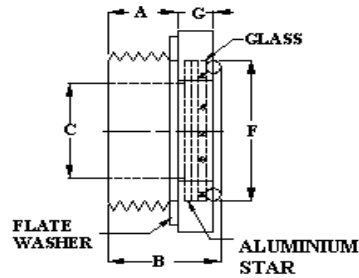
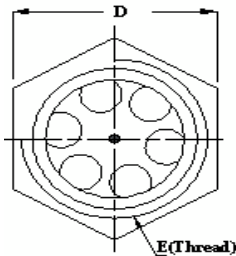


VEVVAHYDRAULIC

MODEL CODE	A	B	C	D	E	F	G
OLI 03	3"	48	M12	34	108	20	37
OLI -05	5"	48	M12	34	159	20	76

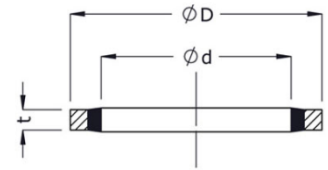
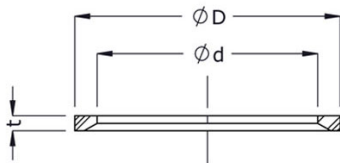
KNOB TYPE LEVEL GAUGE

- Special Aluminum to solvents. Oils with additives, greases, acid, and alkali.
- Steel star-shaped Contrast screen and central level sight hole
- NBR synthetic rubber packing ring Maximum Working temperature 80°C centigrade at a normal pressure



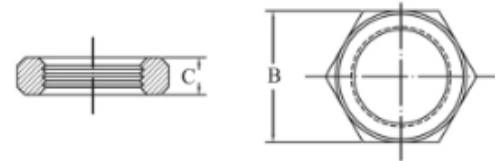
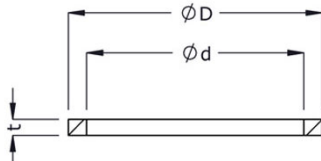
KNOB ALUMINIUM	1/4" BSP	23	8	19	12	19	8
KNOB ALUMINIUM	3/8" BSP	23.5	12	22	13	21	8
KNOB ALUMINIUM	1/2" BSP	22	15	27	12	25	8
KNOB ALUMINIUM	3/4" BSP	24	19	32	12.5	29	8
KNOB ALUMINIUM	1" BSP	24	22	38	12.5	34	9
KNOB ALUMINIUM	1.1/4" BSP	25	33	48	12	45	10
KNOB ALUMINIUM	1.1/2" BSP	25	33	55	11.5	45	10
METRIC							
KNOB ALUMINIUM	M 12 X 1.5	23	8	19	12	19	8
KNOB ALUMINIUM	M 14 X 1.5	23	8	19	12	19	8
KNOB ALUMINIUM	M 16 X 1.5	23.5	12	22	13	20	8
KNOB ALUMINIUM	M 18 X 1.5	23.5	12	22	13	20	8
KNOB ALUMINIUM	M 19 X 1.5	22	15	27	12	25	8
KNOB ALUMINIUM	M 20 X 1.5	22	15	27	12	25	8
KNOB ALUMINIUM	M 22 X 1.5	22	15	27	12	25	8
KNOB ALUMINIUM	M 24 X 1.5	24	19	32	12.5	29	8
KNOB ALUMINIUM	M 25 X 1.5	24	19	32	12.5	29	8
KNOB ALUMINIUM	M 26 X 1.5	24	19	32	12.5	29	8
KNOB ALUMINIUM	M 27 X 1.5	24	19	32	12.5	29	8
KNOB ALUMINIUM	M 30 X 1.5	24	22	38	12.5	34	9
KNOB ALUMINIUM	M 32 X 1.5	24	22	38	12.5	34	9
KNOB ALUMINIUM	M 33 X 1.5	24	22	38	12.5	34	9
KNOB ALUMINIUM	M 35 X 1.5	24	22	38	12.5	34	9
KNOB ALUMINIUM	M 36 X 1.5	24	22	38	12.5	34	9
KNOB ALUMINIUM	M 40 X 1.5	25	33	48	12	45	10
KNOB ALUMINIUM	M 42 X 1.5	25	33	48	12	45	10
KNOB ALUMINIUM	M 46 X 2	25	33	55	11.5	45	10

DOWTY SEAL & ED SEAL



D	d1	T	METRIC ED	PART NO	BSP ED	PART NO	MALE BSPP	d1	D	T	PART NO
11.9	8.4	1	M10X1.0	ED-M10	BSP-1/8	EDS-1/8"	BSP-1/8	10.4	15.9	1.8	DS-1/8
14.4	9.8	1.5	M12X1.5	ED-M12	-		BSP-1/4	13.7	20.6	1.8	DS-1/4
16.5	11.6	1.5	M14X1.5	ED-M14	BSP-1/4	EDS-1/4"	BSP-3/8	17.3	23.8	1.8	DS-3/8
18.9	13.8	1.5	M16X1.5	ED-M16	-		BSP-1/2	21.5	28.6	2.3	DS-1/2
18.9	14.7	1.5	-	-	BSP-3/8	EDS-3/8"	BSP-3/4	27.1	34.9	2.3	DS-3/4
20.9	15.7	1.5	M18X1.5	ED-M18	-		BSP-1"	33.9	42.8	2.3	DS-1"
22.9	17.8	1.5	M20X1.5	ED-M20	-		BSP-1.1/4	42.9	52.4	2.9	DS-1.1/4
23.9	18.5	1.5	-	-	BSP-1/2	EDS-1/2"	BSP-1.1/2	48.4	58.6	2.9	DS-1.1/2
24.3	19.6	1.5	M22X1.5	ED-M22	-		BSP-2	60.6	73	2.9	DS-2
29.2	23.6	1.5	M26X1.5 M27X2.0	ED-M26 ED-M27	BSP-3/4	EDS-3/4"					
35.7	29.7	1.5	M33X2.0	ED-M33	BSP-1"	EDS-1"					
45.8	38.8	2	M42X2.0	ED-M42	BSP-1.1/4	EDS-1.1/4					
50.7	44.7	2	M48X2.0	ED-M48	BSP-1.1/2	EDS-1.1/2					

COPPER WASHER & CHECK NUT



MALE BSP	d	D	T	PART NO	FEMALE BSP	d	T	PART NO
1/8"	10.2	13.9	1	CW-1/8	1/8"	17	5	CN-1/8
1/4"	14.2	17.9	1.5	CW-1/4	1/4"	19	7	CN-1/4
3/8"	17.2	20.9	1.5	CW-3/8	3/8"	22	8	CN-3/8
1/2"	21.2	25.9	1.5	CW-1/2	1/2"	27	9	CN-1/2
3/4"	27.3	31.9	2	CW-3/4	3/4"	32	10	CN-3/4
1"	33.3	38.9	2	CW-1	1"	41	10	CN-1
1.1/4"	42.3	48.9	2	CW-1.1/4	1.1/4"	50	11	CN-1.1/4
1.1/2"	48.3	54.9	2	CW-1.1/2	1.1/2"	55	12	CN-1.1/2
2"	60.5	67.8	2.5	CW-2	2"	70	14	CN-2

METRIC CHECK NUT

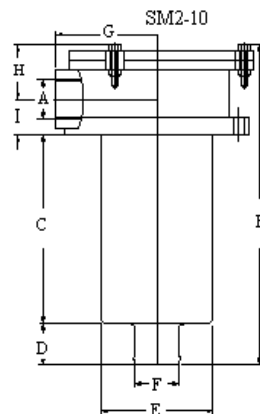
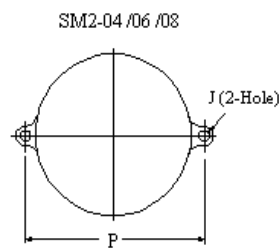
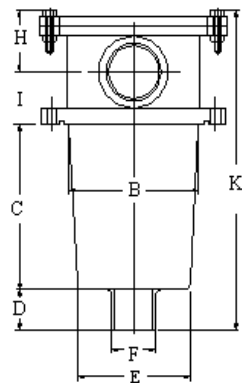
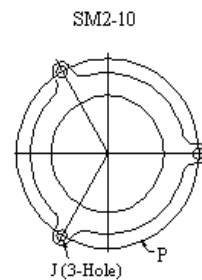
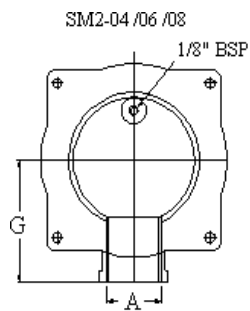
FEMALE METRIC	T	S1	E	PART NO
M12X1.5	6	17	19.6	CN-M12
M14X1.5	6	19	21.6	CN-M14
M16X1.5	6	22	25.4	CN-M16
M18X1.5	6	24	27.7	CN-M18
M20X1.5	6	27	31.2	CN-M20
M22X1.5	7	30	34.6	CN-M22
M24X1.5	7	32	36.9	CN-M24
M26X1.5	8	36	41.6	CN-M26
M30X1.5	9	41	47.3	CN-M30
M36X2.0	9	46	53.1	CN-M36
M42X2.0	9	50	57.5	CN-M42
M45X2.0	9	55	63.5	CN-M45
M52X2.0	10	65	75	CN-M52



VACHHRAJ ENGINEERING

RETURN LINE FILTERS TANK MOUNTED (SM2)

- 4 SIZE - FLOWS UP TO 175 LPM
- ELEMENTS REPLACEBLE THROUGH COVER
- ALL ALUMINIUM DIE CAST CONSTRUCTION
- OPTIONALS CLOGGING INDICATOR
- BY PASS STANDARD - 1 BAR
- 10 BAR WORKING PRESSURE
- BSP THREAD STANDARD - FOR OPTIONAL THREADS CONSULTS FACTORY
- DIRECT TANK MOUNTED
- FOR USE WITH MINERAL / PETROLEUM BASE OILS

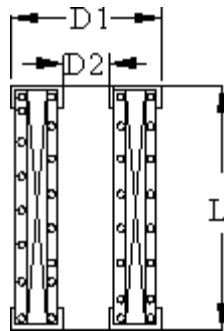


MODEL NO	PORT SIZE BSP A	B	C	D	E	POINT SIZE BSP F	G	H	I	J	P	P	LENGTH K
SM2-04	1/2"	64	61	15	61	1/2"	50	33.5	23	6.5	90	90	133
SM2-06	3/4"	85.5	76.5	14.5	81	3/4"	69	36	28	7	112	112	154
SM2-08	1"	85.5	105	14.5	81	3/4"	69	38	31.5	7	112	112	190
SM2-10	1.1/4"	107	173	37	107	42 MM H	96.5	43.5	35	11	175	175	300

MODEL CODE ASSEMBLY

SM2	4	B	ELEMENT	
SERIES	PORT	THREAD	FILTRATION	
	INCH		MICRON	
2-ALL CAST	04 - 1/2"	B - BSPP (STD) N - NPT (OPTIONAL)	P10 - 10μ	M 149 - 149μ MESH
	06 - 3/4"		P25 - 25μ	M 100 - 100μ MESH
	08 - 1"			M 074 - 074μ MESH
	10 - 1 1/4"			M 063 - 063μ MESH

MODEL CODE : ELEMENT



SME	D1	D2	LENTH	ELENENT 10/25 PAPER	SQ.CM 149 SS MESH
SME-04	51	25	42	710	325
SME-06	65	32	93	1225	425
SME-08	65	32	131	2450	665
SME-10	100	40	200	5000	1930
SMEH-10	100	40	245	6120	2360

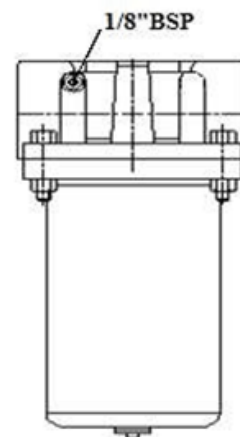
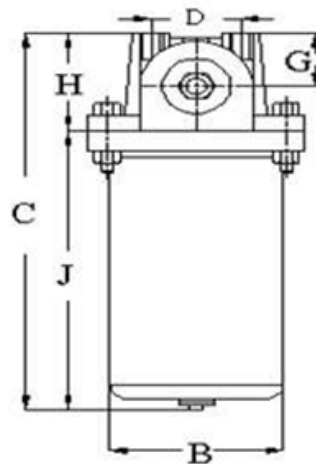
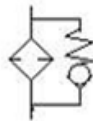
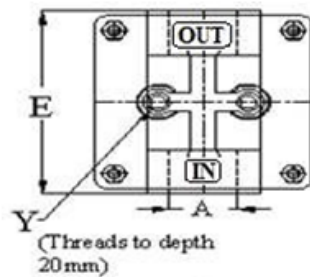
RETURN IN LINE FILTERS (HFR)

BY PASS STANDARD 1 BAR

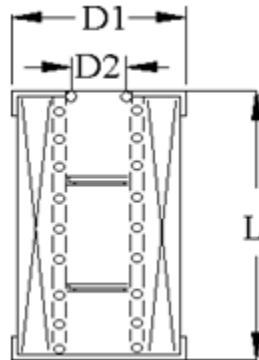
- WORKING PRESSURE TO 20 BAR
- MAX. TEMP LIMITED TO 80° C
- 3 BASIC MODEL ⇨ FLOWS TO 120 LPM
- SUITABLE FOR MINERAL / PETROLEUM BASED OILS
- ALUMINIUM DIE CAST CONSTRUCTION



MODEL	LPM	PORT A	B	C	D	E	G	H	J	Y
HFR - 05	40	1/2"	66	147	38	88	24	44	130	M8
HFR - 10	80	3/4" 1"	84	180	43.5	112	24	50	128	M8
HFR - 20	120	1.1/4" 1.1/2"	120	286	56	132.5	34.5	70	215	M10



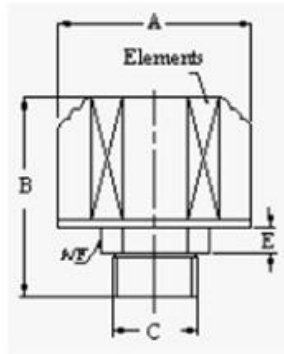
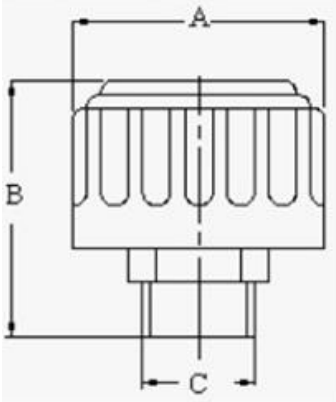
MODEL CODE : ELEMENT



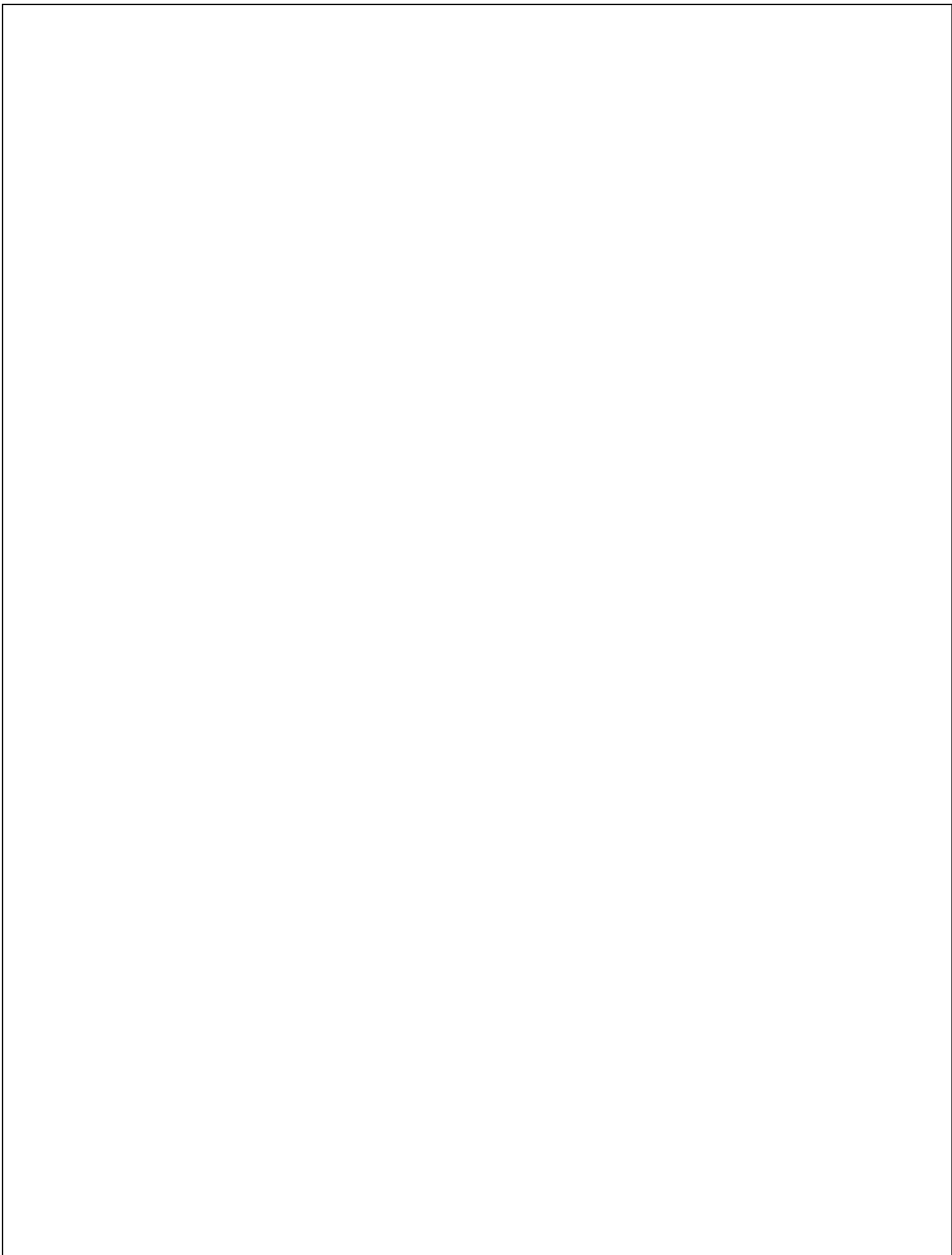
HFE	P D1	M D1	D2	LENTH L	ELEMENT 10/25 PAPER	149 SS MESH
HFE-10	70	65	34	109	2205	560
HFE-20	100	85	51	200	7235	1800
P = PAPER , M=ALL MESH ELEMENTS						

TANK BREASTHER (TB)

- Chrome Plated steel cap
- Filtration 40 micron standard /optional 10 & 3 micron
- Air filtration 5 to 25 CFM (750 LPM)



MODEL	DESPLACEMENT	RATING MICRONS	A	B	STD - C BSP/NPT	E	A/F
TB-05	5CFM/150 LPM	40	46	63	1/4"	8	19
TB-05	5CFM/150 LPM	40	46	63	3/8"	8	22
TB-05-10	5CFM/90 LPM	10	46	63	1/2"	8	27
TB-25	25CFM/720LPM	40	77	75	3/4"	10	32
TB-25	25CFM/720LPM	40	77	75	1"	10	41
TB-25	25CFM/720LPM	40	77	75	1.1/4"	10	50
TB25-10	25CFM/400LPM	10	77	75	1.1/2"	10	55



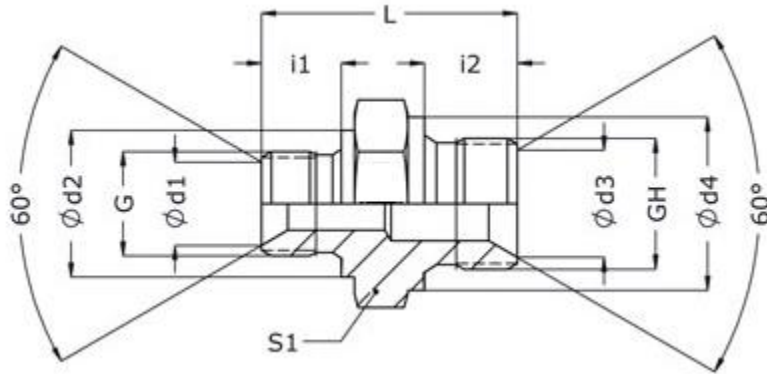
VEW HYDRAULIC



VACHHRAJ ENGINEERING

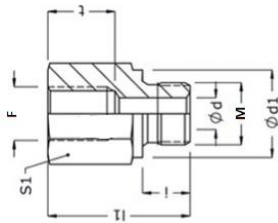
VEW HYDRAULIC

HEX NIPPLE (BSPXBSP)



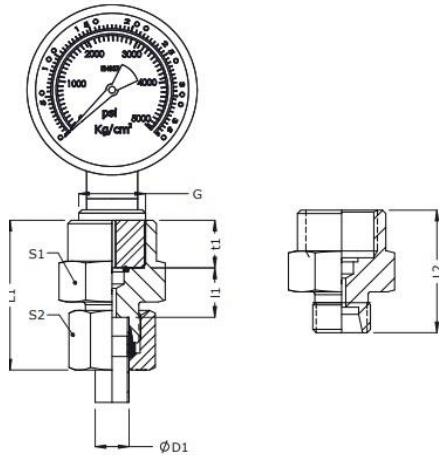
BSP MALE	BSP MALE	D1	D2	D3	D4	I1	I2	L	S1	PART NO
1/8*	1/8*	7.5	14	7.5	14	8	8	23	14	HN-1/8*1/8
1/8*	1/4*	7.5	14	10.4	18	8	11	27.5	19	HN-1/8*1/4
1/4*	1/4*	10.4	18	10.4	18	11	11	32	19	HN-1/4*1/4
1/4*	3/8*	10.4	18	14	22	11	12	35.5	22	HN-1/4*3/8
1/4*	1/2*	10.4	18	17.5	26	11	14	38	27	HN-1/4*3/8
3/8*	3/8*	14	22	14	22	12	12	36	22	HN-3/8*3/8
3/8*	1/2*	14	22	17.5	26	12	14	38.5	27	HN-3/8*1/2
3/8*	3/4*	14	22	22.9	32	12	16	40.5	32	HN-3/8*3/4
1/2*	1/2*	17.5	26	17.5	26	14	14	41	27	HN-1/2*1/2
1/2*	3/4*	17.5	26	22.9	32	14	16	43	32	HN-1/2*3/4
1/2*	1*	17.5	26	28.7	39	14	19	48	41	HN-1/2*1
3/4*	3/4*	22.9	32	22.9	32	16	16	45	32	HN-3/4*3/4
3/4*	1*	22.9	32	28.7	39	16	19	50	41	HN-3/4*1"
3/4*	1.1/4*	22.9	32	36.8	49	16	20	57	50	HN-3/4*1.1/4
1*	1*	28.7	39	28.7	39	19	19	52	41	HN-1*1
1*	1.1/4*	28.7	39	36.8	49	19	20	59	50	HN-1*1.1/4
1*	1.1/2*	28.7	39	42.7	55	19	22	63.5	55	HN-1*1.1/2
1.1/4*	1.1/4*	36.8	49	36.8	49	20	20	61	50	HN-1.1/4*1.1/4
1.1/4*	1.1/2*	36.8	49	42.7	55	20	22	65	55	HN-1.1/4*1.1/2
1.1/2*	1.1/2*	42.7	49	42.7	55	22	22	66	55	HN-1.1/2*1.1/2

MALE & FEMALE REDUCING



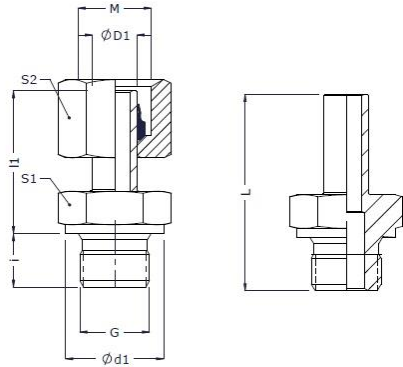
WORKING PRESSUR	M MALE BSP	F FEMALE BSP	D1	D	I	L1	T	S1	PART NO
630 BAR	M*1/8	F*1/4	14	4	8	31	17	19	MF-1/8 X 1/4
	M*1/8	F*3/8	14	4	8	32	17	22	MF-1/8 X 3/8
630 BAR	M*1/4	F*1/8	18	5	12	28	12	19	MF-1/4 X 1/8
	M*1/4	F*3/8	18	5	12	36	17	22	MF-1/4 X 3/8
	M*1/4	F*1/2	18	5	12	40	20	27	MF-1/4 X 1/2
	M*1/4	F*3/4	18	5	12	43	22	32	MF-1/4 X 3/4
360 BAR	M*3/8	F*1/8	22	-	12	22.5	8	22	MF-3/8 X 1/8
	M*3/8	F*1/4	22	8	12	36	17	22	MF-3/8 X 1/4
	M*3/8	F*1/2	22	8	12	41	20	27	MF-3/8 X 1/2
400 BAR	M*3/8	F*3/4	22	8	12	44	22	32	MF-3/8 X 3/4
630 BAR	M*1/2	F*1/4	26	-	14	24	12	27	MF-1/2 X 1/4
	M*1/2	F*3/8	26	12	14	36	17	27	MF-1/2 X 3/8
400 BAR	M*1/2	F*3/4	26	12	14	46	22	32	MF-1/2 X 3/4
	M*1/2	F*1	26	12	14	49	24.5	41	MF-1/2 X 1
250 BAR	M*1/2	F*1.1/4	26	10	14	53	26.5	50	MF-1/2 X 1.1/4
400 BAR	M*3/4	F*1/4	32	-	16	26	12	32	MF-3/4 X 1/4
	M*3/4	F*3/8	32	-	16	26	12	32	MF-3/4 X 3/8
	M*3/4	F*1/2	32	16	16	41	20	32	MF-3/4 X 1/2
	M*3/4	F*1	32	16	16	51	24.5	41	MF-3/4 X 1
250 BAR	M*3/4	F*1.1/4	32	16	16	55	26.5	50	MF-3/4 X 1.1/4
	M*3/4	F*1.1/2	32	16	16	57	28.5	55	MF-3/4 X 1.1/2
400 BAR	M*1	F*1/4	39	-	18	29	12	41	MF-1 X 1/4
	M*1	F*3/8	39	-	18	29	12	41	MF-1 X 3/8
	M*1	F*1/2	39	-	18	29	14	41	MF-1 X 1/2
	M*1	F*3/4	39	20	18	47	22	41	MF-1 X 3/4
250 BAR	M*1	F*1.1/4	39	20	18	57	26.5	50	MF-1 X 1.1/4
	M*1	F*1.1/2	39	20	18	59	28.5	55	MF-1 X 1.1/2
250 BAR	M*1.1/4	F*1/2	49	-	20	32	14	50	MF-1.1/4 X 1/2
	M*1.1/4	F*3/4	49	-	20	32	16	50	MF-1.1/4 X 3/4
	M*1.1/4	F*1	49	25	20	52	24.5	50	MF-1.1/4 X 1
	M*1.1/4	F*1.1/2	49	25	20	60	28.5	55	MF-1.1/4 X 1.1/2
250 BAR	M*1.1/2	F*1/2	55	-	22	36	14	55	MF-1.1/2 X 1/2
	M*1.1/2	F*3/4	55	-	22	36	16	55	MF-1.1/2 X 3/4
	M*1.1/2	F*3/4	55	-	22	36	18	55	MF-1.1/2 X 1
	M*1.1/2	F*1.1/4	55	32	22	58	26.5	55	MF-1.1/2 X 1.1/4

PRESURE GUAGE COUPLING



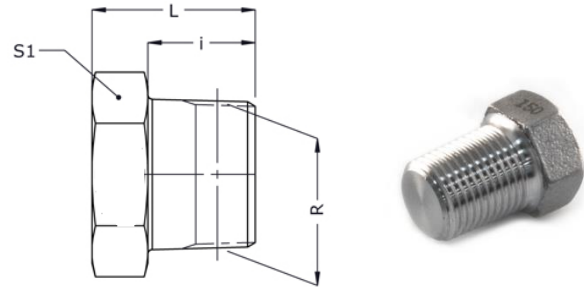
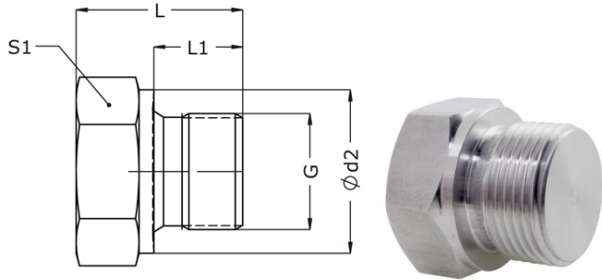
SERIES	TUBE OD D1	CONNECTION THREAD	I1	L1	T1	L2	S1	S2	PART NO
Light (L) 250 bar	6	G 1/4 A	7.5	37.5	14.5	29	19	14	MAV-06 X 1/4"
	8	G 1/4 A	7.5	37.0	14.5	29	19	17	MAV-08 X 1/4"
	10	G 1/4 A	8.5	38.5	14.5	30	19	19	MAV-10 X 1/4"
	12	G 1/4 A	8.5	38.0	14.5	30	19	22	MAV-12 X 1/4"
250 bar	6	G 3/8 A	9.5	41.5	16.5	33	22	14	MAV-06 X 3/8"
	8	G 3/8 A	9.5	41.0	16.5	33	22	17	MAV-08 X 3/8"
	10	G 3/8 A	10.5	42.5	16.5	34	22	19	MAV-10 X 3/8"
	12	G 3/8 A	10.5	42.0	16.5	34	22	22	MAV-12 X 3/8"
Heavy (S) 630 bar	6	G 3/8 A	9.5	41.5	16.5	33	22	17	MAV-06 X 3/8"
	8	G 3/8 A	9.5	41.0	16.5	33	22	19	MAV-08 X 3/8"
	10	G 3/8 A	9	42.5	16.5	33	22	22	MAV-10 X 3/8"
	12	G 3/8 A	9	42.0	16.5	33	22	24	MAV-12 X 3/8"
630 bar	6	G 1/2 A	11	46.5	20	36	27	17	MAV-12 X 1/2"
	8	G 1/2 A	11	46.0	20	36	27	19	MAV-12 X 1/2"
	10	G 1/2 A	10.5	47.5	20	36	27	22	MAV-12 X 1/2"
	12	G 1/2 A	10.5	47.0	20	36	27	24	MAV-12 X 1/2"

STAND PIPE ADAPTOR (SP)



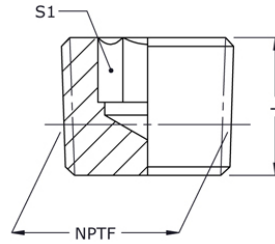
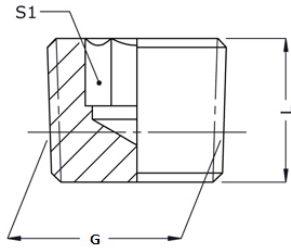
SERIES	TUBE OD	G MALE	METRIC THRED	D1	I	L1	L	S1	S2	PART NO
LIGHT L 250 BAR	6	1/8"	M12X1.5	14	8	24.5	32.5	14	14	SP-06-1/8
	8	1/4"	M14X1.5	18	12	29.5	41.5	19	17	SP-08-1/4
	10	1/4"	M16X1.5	18	12	27.5	39.5	19	19	SP-10-1/4
	12	3/8"	M18X1.5	22	12	34	46	22	22	SP-12-3/8
	15	1/2"	M22X1.5	26	14	32	46	27	27	SP-15-1/2
160 BAR	18	1/2"	M26X1.5	26	14	31.5	45.5	27	32	SP-18-1/2
	22	3/4"	M30X2.0	32	16	32.5	48.5	32	36	SP-22-3/4
100 BAR	28	1"	M36X2.0	39	18	35	53	41	41	SP-28-1"
	35	1.1/4"	M45X2.0	49	20	42.5	62.5	50	50	SP-35-1.1/4
	42	1.1/2"	M52X2.0	55	22	46.5	68.5	55	60	SP-42-1.1/2
HEAVY S 400 BAR	6	1/4"	M14X1.5	18	12	27	39	19	17	SP-06-1/4
	8	1/4"	M16X1.5	18	12	29.5	51.5	19	19	SP-08-1/4
	10	3/8"	M18X1.5	22	12	32	44	22	22	SP-10-3/8
	12	3/8"	M20X1.5	22	12	34	46	22	24	SP-12-3/8
400 BAR	16	1/2"	M24X1.5	26	14	37	51	27	30	SP-16-1/2
	20	3/4"	M30X2.0	32	16	43	59	32	36	SP-20-3/4
	25	1"	M36X2.0	39	18	48	66	41	46	SP-25-1
250 BAR	30	1.1/4"	M42X2.0	49	20	51	71	50	50	SP-30-1.1/4
	38	1.1/2"	M52X2.0	55	22	60	82	55	60	SP-38-1.1/2

HEX PLUG (BSP & BSPT & NPT)



MALE BSP	D2	L	L1	S1	PART NO	MALE BSP	L	I	S1	PART NO
G*1/8	14	14.5	8	14	HP*1/8	PT*1/8	11.5	7.5	12	HPT*1/8
G*1/4	18	20	12	19	HP*1/4	PT*1/4	17	11	14	HPT*1/4
G*3/8	22	22.5	12	22	HP*3/8	PT*3/8	17.5	11.5	19	HPT*3/8
G*1/2	26	24	14	27	HP*1/2	PT*1/2	25	15	22	HPT*1/2
G*3/4	32	26	16	32	HP*3/4	PT*3/4	26.5	16.5	32	HPT*3/4
G*1	39	27	16	41	HP*1	PT*1	31	19	41	HPT*1
G*1.1/4	49	28	16	50	HP*1.1/4	PT*1.1/4	35	21.5	50	HPT*1.1/4
G*1.1/2	55	30	16	55	HP*1.1/2	PT*1.1/2	35	21.5	55	HPT*1.1/2
G*2						PT*2				

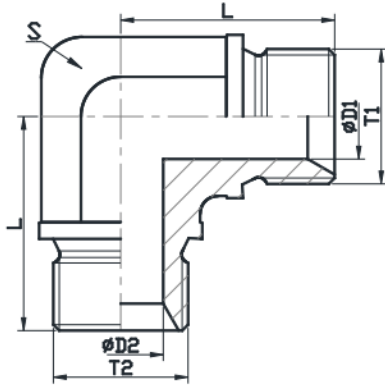
BLIND PLUG (BSP & BSPT)



MALE BSPT	L	S1	PART NO
PT - 1/8	7.8	5	BLINDPT-1/8
PT - 1/4	12	6	BLINDPT-1/4
PT - 3/8	12	8	BLINDPT-3/8
PT - 1/2	16	10	BLINDPT-1/2
PT - 3/4	16.2	14	BLINDPT-3/4
PT - 1	20	14	BLINDPT-1
PT - 1.1/4	20	22	BLINDPT-1.1/4
PT - 1.1/2	20	30	BLINDPT-1.1/2
PT - 2"	21	30	BLINDPT - 2"

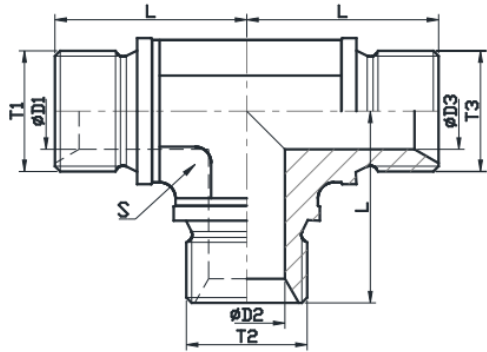
MALE BSPT	L	S1	PART NO
G*1/8	8	5	BLINDG*1/8
G*1/4	10	7	BLINDG*1/4
G*3/8	10	8	BLINDG*3/8
G*1/2	10	10	BLINDG*1/2
G*3/4	12	12	BLINDG*3/4
G*1	12	17	BLINDG*1
G*1.1/4	18	22	BLINDG*1.1/4
G*1.1/2	20	24	BLINDG*1.1/2
G*2	25	30	BLINDG*2

MALE ELBOW BSP



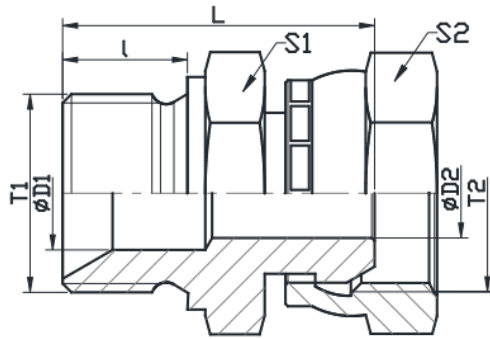
MALE BSP-T1	MALE BSP-T2	D1	D2	L	S	PART NO
1/8"	1/8"	4	4	23.5	12	MW-1/8" X 1/8"
1/8"	1/4"	4	6	27.5	14	MW-1/8" X 1/4"
1/8"	3/8"	4	8	31	19	MW-1/8" X 3/8"
1/4"	1/4"	6	6	27.5	14	MW-1/4" X 1/4"
1/4"	3/8"	6	8	31	19	MW-1/4" X 3/8"
1/4"	1/2"	6	11	36.5	22	MW-1/4" X 1/2"
3/8"	3/8"	8	8	31	19	MW-3/8" X 3/8"
3/8"	1/2"	8	11	36.5	22	MW-3/8" X 1/2"
1/2"	1/2"	11	11	36.5	22	MW-1/2" X 1/2"
1/2"	3/8"	11	16.7	42	27	MW-1/2" X 3/8"
1/2"	1"	11	22.2	48.5	32	MW-1/2" X 1"
3/4"	3/4"	16.7	16.7	42	27	MW-3/4" X 3/4"
3/4"	1"	16.7	22.2	48.5	32	MW-3/4" X 1"
1"	1"	22.2	22.2	48.5	32	MW-1" X 1"

MALE TEE BSP



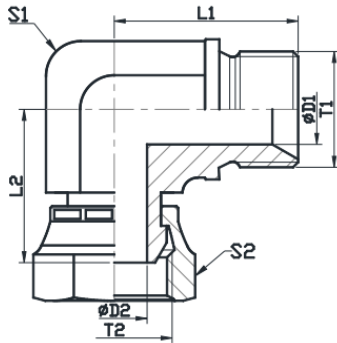
MALE BSP-T1	MALE BSP-T2	MALE BSP-T2	D1	D2	D3	L	S	PART NO
1/8"	1/8"	1/8"	4	4	4	23.5	12	MALE TEE -1/8
1/4"	1/4"	1/4"	6	6	6	27.5	14	MALE TEE -1/4
3/8"	3/8"	3/8"	8	8	8	31	19	MALE TEE -3/8
1/2"	1/2"	1/2"	11	11	11	27.5	14	MALE TEE -1/2
3/4"	3/4"	3/4"	16	16	16	31	19	MALE TEE -3/4
1"	1"	1"	22	22	22	36.5	22	MALE TEE - 1

SWIVEL CONECTOR BSP



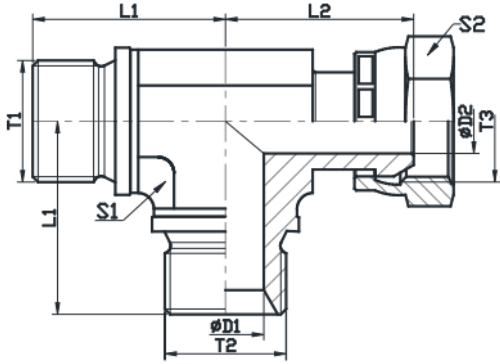
MALE BSP-T1	FEMALE BSP-T2	D1	D2	L	I	S1	S2	PART NO
1/4"	1/4"	6	4	32	12	19	19	SW-1/4
3/8"	3/8"	8	7	34.5	13	22	22	SW-3/8
1/2"	1/2"	11	9	41	16	27	27	SW-1/2
3/4"	3/4"	16.7	14	44	18	32	32	SW-3/4
1"	1"	19	19	52.5	21	41	41	SW- 1"

SWIVEL ELBOW (EVW)



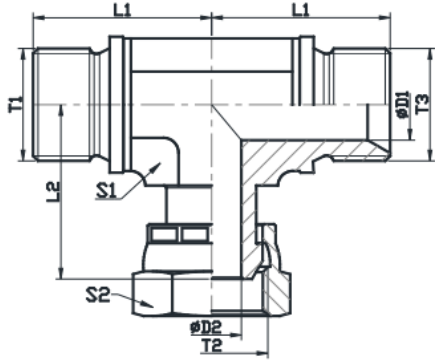
MALE BSP-T1	FEMALE BSP-T2	D1	D2	L	L2	S1	S2	PART NO
1/4"	1/4"	6	4	27.5	26	14	19	EVW-1/4
3/8"	3/8"	8	7	31	30.5	19	22	EVW-3/8
1/2"	1/2"	11	9	36.5	36	22	27	EVW-1/2
3/4"	3/4"	16	15	42	35	27	32	EVW-3/4
1"	1"	19	19	48.5	44	32	41	EVW-1"

SWIVEL TEE BSP (EVL)



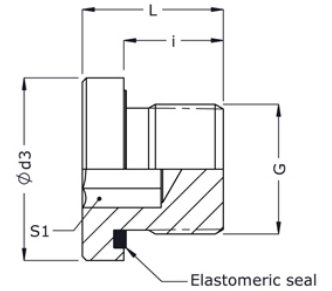
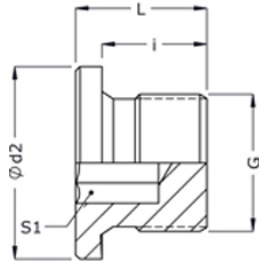
MALE BSP - T1	MALE BSP - T2	FEMALE BSP - T3	D1	D2	L1	L2	S1	S2	PART NO
1/4"	1/4"	1/4"	6	4	27.5	26	14	19	EVL - 1/4
3/8"	3/8"	3/8"	8	7	31	30.5	19	22	EVL - 3/8
1/2"	1/2"	1/2"	11	9	36.5	36	22	27	EVL - 1/2
3/4"	3/4"	3/4"	16	14	42	41	27	32	EVL - 3/4
1"	1"	1"	19	19	48.5	44	33	41	EVL - 1"

SWIVEL TEE BSP (EVT)



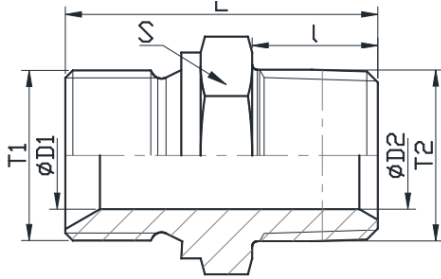
MALE BSP -T1	FEMALE BSP -T2	MALE BSP -T3	D1	D2	L1	L2	S1	S2	PART NO
1/4"	1/4"	1/4"	6	4	27.5	26	14	19	EVT - 1/4
3/8"	3/8"	3/8"	8	7	31	30.5	19	22	EVT - 3/8
1/2"	1/2"	1/2"	11	9	36.5	36	22	27	EVT - 1/2
3/4"	3/4"	3/4"	16	14	42	41	27	32	EVT - 3/4
1"	1"	1"	19	19	48.5	44	33	41	EVT - 1"

COLLAR PLUG (CP,ED)



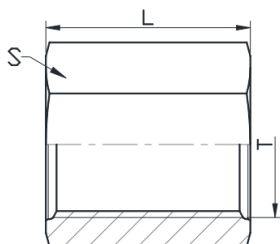
COLLER PLUG						ED-COLLER PLUG					
MALE BSP	D2	L	I	S1	PART NO	MALE BSP	D2	L	I	S1	PART NO
1/8"	14	11	8	5	CP - 1/8	1/8"	14	13	8	5	ED-CP-1/8
1/4"	18	15	12	6	CP - 1/4	1/4"	19	17	12	6	ED-CP-1/4
3/8"	22	15	14	8	CP - 3/8	3/8"	22	17	12	8	ED-CP-3/8
1/2"	26	18	16	10	CP - 1/2	1/2"	27	20	14	10	ED-CP-1/2
3/4"	32	20	16	12	CP - 3/4	3/4"	32	22	16	12	ED-CP-3/4
1"	39	21	16	17	CP - 1"	1"	40	24	16	17	ED-CP-1"
1.1/4"	49	21	16	19	CP - 1.1/4	1.1/4"	50	24	16	19	ED-CP-1.1/4
1.1/2"	55	21	16	19	CP - 1.1/2	1.1/2"	55	24	16	19	ED-CP-1.1/2
2"	70	32	20	19	CP - 2"	2"	70	32	20	19	ED-CP-2

HEX NIPPLE (BSP X BSPT)



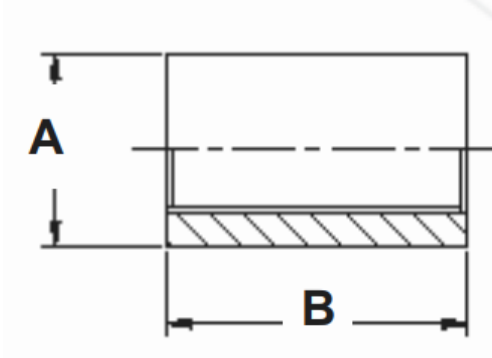
WP BAR	BSP T1	BSPT T2	D1	D2	L	I	S	PART NO
350	1/8"	1/4"	4	6	31	15	19	HNR-1/8 X 1/4
350	1/4"	1/4"	6	6	35	15	19	HNR-1/4 X 1/4
350	1/4"	3/8"	6	8	37	15	19	HNR-1/4 X 3/8
350	3/8"	1/4"	8	6	36	15	22	HNR-3/8 X 1/4
200	3/8"	1/2"	8	11	42	20	22	HNR-3/8 X 3/8
350	3/8"	3/8"	8	8	36	15	22	HNR-3/8 X 1/2
200	1/2"	1/4"	11	6	41	15	27	HNR-1/2 X 1/4
200	1/2"	3/8"	11	8	41	15	27	HNR-1/2 X 3/8
200	1/2"	1/2"	11	11	46	20	27	HNR-1/2 X 1/2
200	3/4"	3/4"	16	16	49	20	32	HNR-3/4 X 3/4
120	3/4"	1"	16	20	56	25	41	HNR- 3/4 X 1"
120	1"	1/2"	20	11	54	20	41	HNR- 1" X 1/2
120	1"	1"	20	20	59	25	41	HNR - 1" X 1"
105	1.1/4"	3/4"	28	16	55	20	50	HNR-1.1/4 X 3/4
105	1.1/4"	1.1/4"	28	28	60	25	50	HNR-1.1/4 X 1.1/4
105	1.1/2"	1.1/2"	33	33	65	25	55	HNR-1.1/2 X 1.1/2
70	2"	2"	55	55	67	27	70	HNR- 2" X 2"

FEMALE HEX COUPLING (FHC)



WP BAR	FEMALE BSP	L	S	PART NO
420	1/8"	19	17	FHC - 1/8
420	1/4"	28	19	FHC - 1/4
420	3/8"	28	22	FHC - 3/8
350	1/2"	33	27	FHC - 1/2
280	3/4"	37	32	FHC - 3/4
180	1"	42	41	FHC - 1"

FEMALE ROUND COUPLING (FRC)

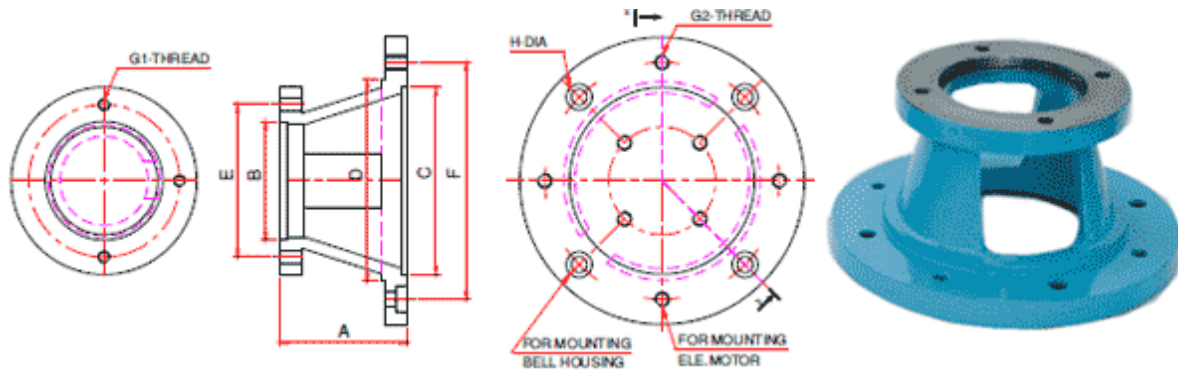


WP BAR	FEMALE BSP	B	A	PART NO
420	1/8"	17	14	FRC -1/8
420	1/4"	25	19	FRC -1/4
420	3/8"	26	22	FRC -3/8
350	1/2"	34	27	FRC -1/2
280	3/4"	36	32	FRC -3/4
180	1"	43	41	FRC -1
	1.1/4	47	48	FRC -1.1/4
	1.1/2	48	55	FRC -1.1/2
	2"	56	70	FRC -2
	2.1/2	65	80	FRC -2.1/2
	3"	71	95	FRC -3
	4"	83	122	FRC -4



VACHHRAJ ENGINEERING

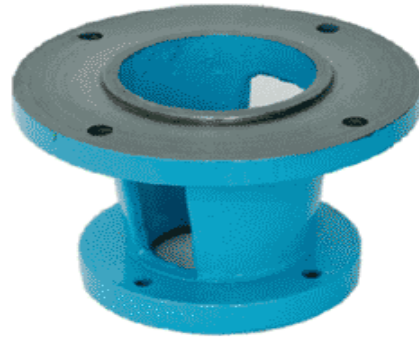
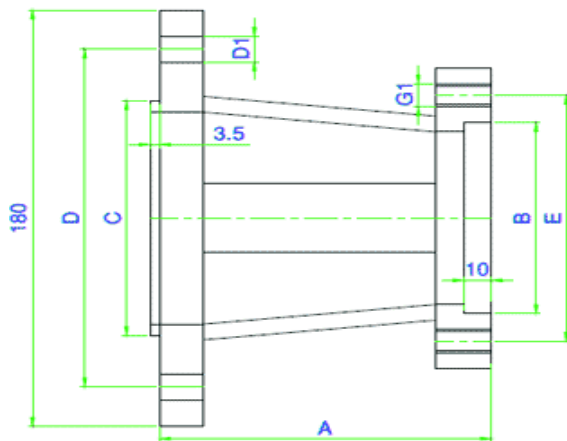
BELL HOUSING (Casting)



FRAME	HP	A	B	C	D	E	F	G1	G2	H
71	0.5	75	82.6	110	120	106.2	130	M10	M8	8.5
80L	0.75,1	80	82.6	130	145	106.2	165	M10	M10	8.5
90S/L	1.5,2	100	82.6	130	140	106.2	165	M10	M10	10.5
100L/ 112M	3.5	120	82.6	180	180	106.2	215	M10	M12	10.5
100L / 112M	3.5	145	101.6	180	190	145.9	215	M12	M12	10.5
132S/M	7.5,10	170	82.6	230	225	106.2	265	M10	M12	10.5
132S/M	7.5,10	170	101.6	230	225	145.9	265	M12	M12	10.5
132S/M	7.5,10	170	127	230	225	180.8	265	M16	M12	10.5
160M/L- 180M/L	12.5,15,20,25,30	200	101.6	250	260	145.9	300	M12	M16	10.5
160M/L- 180M/L	12.5,15,20,25,30	200	127	250	260	180.8	300	M16	M16	10.5
200 L	40	210	101.6 127	300	275	145.9 180.9	350	M12	M16	10.5

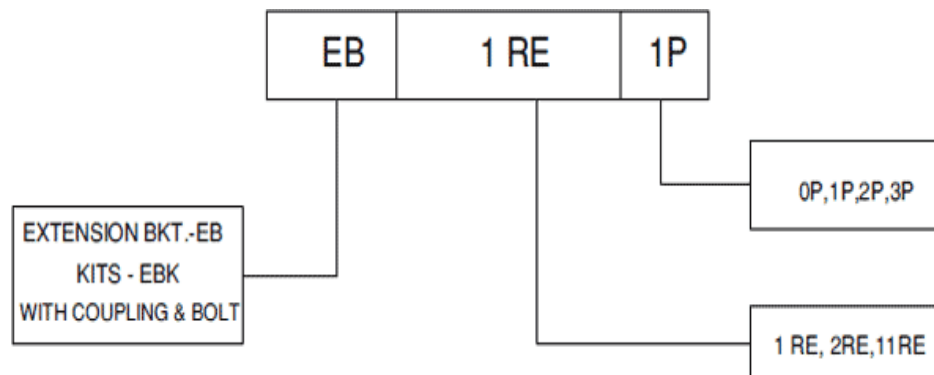
	50/60	280	127	350	275	180.9	400			
	75/100	245	127	450	410	320	500	M16	M16	18

Extension Bracket for Pumps

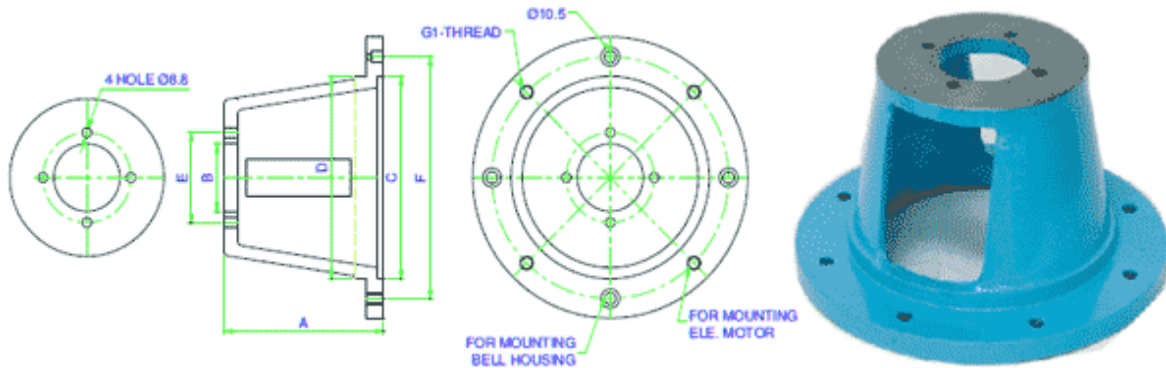


VIEW HYDRAULIC

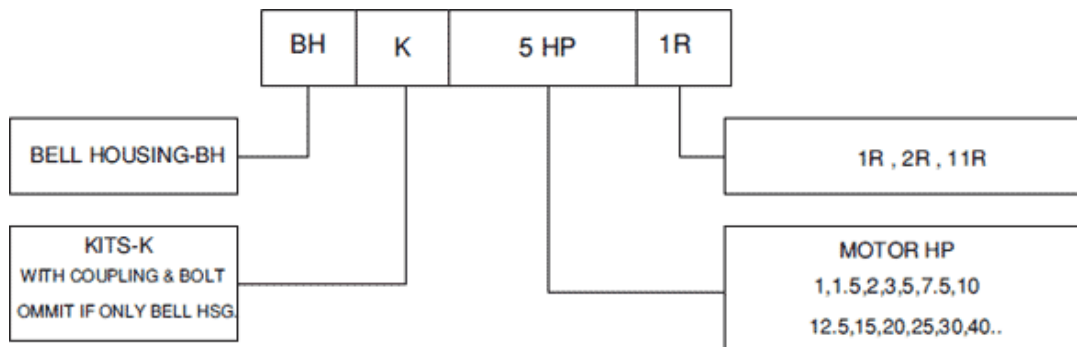
BRACKET	PUMP	A	B	C	D	E	G1	D1
EB 1RE	1P	120 87	82.6	101.6	156	106.2	M10	10.5
EB 1RE	2P	120 96	101.6	101.6	156	145.6	M12	10.5
EB 1RE	3P	130	127	101.6	156	180.6	M16	10.5
EB 11RE	2P	130	101.6	113.8	156	145.9	M12	18
EB 11RE	3P	130	127	113.8	156	180.8	M16	18



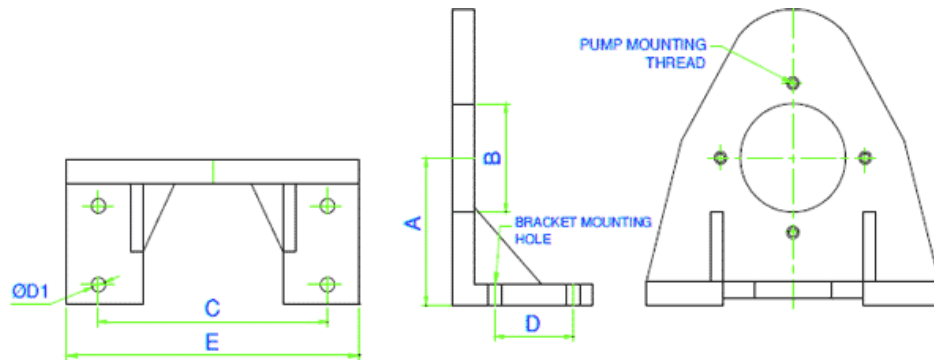
BELL HOUSING FOR PISTON PUMPS



MOTOR HP	A	B	C	D	E	F	G1
1.5,2 HP	130 120	60	130	140	80	165	M10
3,5 HP	145 122	60	180	180	80	216	M12
7.5,10 HP	170 145	60	230	225	80	265	M12
12.5,15,20,25,30HP	200	60	250	260	80	300	M16
40 HP	210	60	300	275	80	350	M16



L - Type Bracket for Pumps



MOTOR	PUMP	A	B	C	D	E	D1
0.5	1P	71	82.6	150	50	182	11
0.75,1	1P	80	82.6	150	50	182	11
1.5,2	1P,1R	90	82.6/60	150	50	182	11
3	1P,2P,3P,1R	100	82.6/101.6 127/60	190	60	228	11
5	1P,2P,3P,1R	112	82.6/101.6 127/60	190	60	228	11
5	1P,2P,1R	132	82.6/101.6 60	230	60	272	13
7.5,10	3P	132	127	230	60	272	13
12.5,15,20	1P,2P,3P,1R	160	82.6/101.6 127/60	270	80	322	13
25,30	1P,2P,3P,1R	180	82.6/101.6 127/60	270	80	322	13

