



MML-HA-300

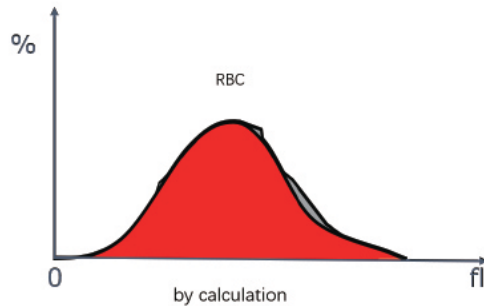
3 Part Hematology Analyzer



Software Algorithm - Intelligent and Accurate Results

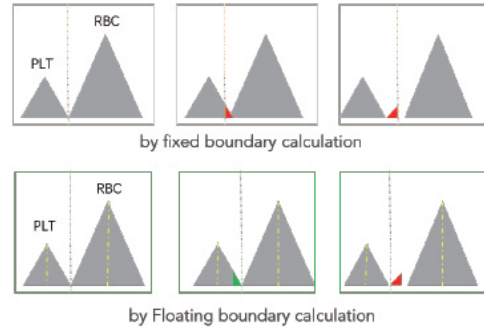
Digital filtering algorithm

- Automatically identify interference signal, correct the symmetry of RBC histogram, therefore enhance the accuracy of RDWMCV.



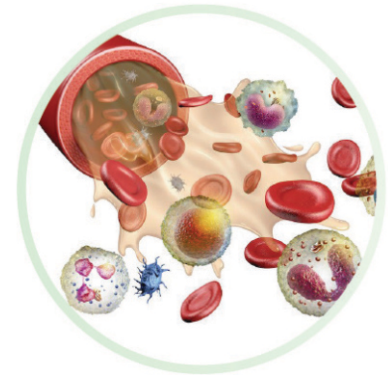
Floating boundary technology

- A method that can identify the boundary between RBC and PLT flexibly, and excludes the interference of small red blood cells.

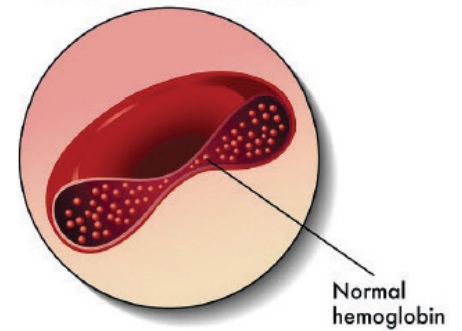


Colourimetric Test - Haemoglobin Concentration

- Hemoglobin is the main component of red blood cells and serves as the transporter for oxygen and carbon dioxide in the blood. Hemoglobin concentration (Hb) is usually reported as grams of hemoglobin per deciliter of blood (g/dL).
- Colourimetric is used to measure hemoglobin concentration. Non-cyanide lyse reagent secures researchers' health.

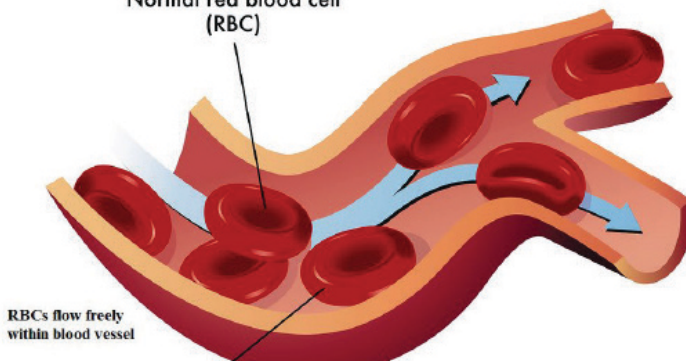


Normal red blood cell section



Normal hemoglobin

Normal red blood cell (RBC)



RBCs flow freely within blood vessel

Test Parameters

22

Parameters

WBC group (7)

WBC, Lym%, Lym#, Mid%, Mid#, Gran%, Gran#

RBC group (8)

RBC, HGB, HCT, MCV, MCH, MCHC, RDW-SD, RDW-CV

PLT group (7)

PLT, MPV, PDW-CV, PDW-SD, PCT, P-LCC, P-LCR

Reliable Results

Parameter	Linearity Range	Repeatability	Carryover
WBC	(1.0~200)×10 ⁹ /L	≤2.5% (3.5~15.0)×10 ⁸ /L	≤0.5%
RBC	(0.00~8.00)×10 ¹² /L	≤1.5% (3.50~6.00)×10 ¹¹ /L	≤0.5%
HGB	20 g/L ~ 250g/L	≤1.5% (110 g /L~180g/L)	≤0.6%
PLT	(20~5000)×10 ⁹ /L	≤6.0% (100~149)×10 ⁸ /L ≤4.0% (150~500)×10 ⁹ /L	≤1.0%
MCV	-	≤1.0% (80fL ~ 110fL)	-

Reliable Results

Parameter	Electric impedance Colorimetry
Quality Control	X-B floating mean L-J Quality control
Throughput	60 samples/h
Storage	600,000 test records
Sample Volume	9 µL (Whole blood mode) 20 µL (Pre-diluted mode)
Sample Type	Capillary whole blood, Venous whole blood, Pre-diluted blood
Calibration	Manual and Auto-calibration
Graphic Parameters	22 Parameters + 3 Histograms
Dimensions	280 mm (L) * 460 mm (W) * 400 mm (H)
Weight	18.0 KG
Hematology Reagents	Diluent A, Lyse, Probe cleanser

Marketed By :

Anvi Diagnostics

Sai Prasad Society, Shop No.3, Road No.2,
Opp. Basera Studio, Singh Estate,
Kandivali (E) Mumbai - 400101.

Customer Care: 9987750054

Email.: ashish.tawde@anvidiagnostics.in

Manufactured & MarketedBy:

MICROMEDICA LABORATORIES PRIVATE LIMITED
Regd Office : 2 & 3, Ground Floor, Labh Smruti,
48/C Baptista Road, Vile Parle West, Mumbai,
Mumbai Suburban, Maharashtra, 400056.

Corporate Office : 814, 8th Floor, La-Prenda,
Junction of Caves and Subhash Road,
Jogeshwari (East), Mumbai-400060