

Welcome to JANKI TRADERS

We build trust

Cover Page

- ▶ **Janki Traders Committed to Building Trust through Exceptional Service and High-Quality Products**
- ▶ We prioritize quality in every aspect of our business, ensuring our offerings meet the highest standards.
- ▶ Our prices are competitive, providing value that shines in the market.
- ▶ Customer satisfaction is at the core of what we do; we strive to meet and exceed expectations.
- ▶ Prompt delivery—ensuring that you receive your orders quickly and efficiently.

Company Introduction

Janki Traders is a proprietorship firm based in New Delhi, India. We are both a **manufacturer and trader / supplier** of Epoxy sheets and other electrical insulation materials, we also offer Synthetic Cryolite.

As an **MSME**, we take pride in our extensive range of high-quality products, supported by large warehouse facilities allowing us to maintain strong stock levels.

We are **GST and IEC registered**. Our team is highly professional and up to date with current industry trends, delivering not just products but reliable solutions for your insulation needs.

Our Product Categories

Below are the product types we offer, along with descriptions, typical uses, and the key test / certification parameters to ensure quality and safety.

- ▶ 3240 Yellow Epoxy Insulation Sheet
- ▶ FR4 Yellow & Black Epoxy Insulation Sheet (Flame Retardant)
- ▶ G10 Green Insulation Epoxy Sheet
- ▶ Vulcanized Fiber Sheet (Red, Black, White)
- ▶ Polyimide Film
- ▶ Electrical Insulation Pressboard
- ▶ Phenolic Cotton Fiber Sheet
- ▶ Bakelite Sheet
- ▶ Polycarbonate Sheet
- ▶ Acrylic Sheet
- ▶ Epoxy Fiber Tube
- ▶ Epoxy Fiber Rod
- ▶ PP / Delrin Sheet
- ▶ Synthetic Cryolite White Powder

3240 Yellow Epoxy Insulation Sheet

Description:

Woven glass cloth impregnated with epoxy resin, laminated under heat and pressure; rigid and dense.

Typical Uses:

Electrical insulation parts, slot wedges, terminal boards, support plates in motors, transformers, switchgear.

Key Test Certificate Parameters:

Insulation resistance $\geq 1 \times 10^{12} \Omega$; Dielectric strength $\geq 14 \text{ kV/mm}$; Bending strength $\geq 214 \text{ MPa}$; Impact strength $\geq 33 \text{ kJ/m}^2$; Thermal class B (130 °C)

Thickness & Size: 0.5mm to 50mm (Size: 1020*2040)



Code	Item	Unit	Value
1	Density	g/cm3	2.08
2	Water absorption	Mg	22.4
3	Bending strength	vertical	254
		horizontal	214
4	Impact strength	vertical	161
		horizontal	39
5	Dielectric strength vertical	Mv/m	4.1
6	Breakdown voltage horizontal	kv	28.7
7	Relative permittivity (1 Mhz)	-	5.4
8	resistance	vertica	4.7×10^{12}
		horizontal	9.8×10^{12}

FR4 Yellow & Black Epoxy Insulation Sheet (Flame Retardant)

Description:

Glass fiber cloth reinforced epoxy resin laminate; flame-retardant (UL94 V-0) and moisture-resistant.

Typical Uses:

Ideal for printed circuit boards, electronic component supports, electrical enclosures where flame resistance is required.

Key Test Certificate Parameters:

Insulation resistance $\geq 1 \times 10^{12} \Omega$; Dielectric strength ≥ 18 kV/mm; Flexural strength ≥ 340 MPa; Water absorption $\leq 0.15\%$; Flammability UL94 V-0; Thermal class F (155 °C)

Thickness & Size: 0.5mm to 30mm (Size: 1020*1220)



Code	Characteristic	Unit	Test Condition	Value	Spec.	
1	Volume Resistivity	M-cm	c-96/35/90	6.8×10^8	$\geq 10^6$	
2	Surface Resistivity	M	c-96/35/90	2.5×10^6	$\geq 10^4$	
3	Permittivity(1MHz)	-	c-24/23/50	4.87	≤ 5.4	
4	Loss Tangent	-	c-24/23/50	0.025	≤ 0.035	
5	Arc Resistance	Sec	D-48/50+D-0.5/23	120	≥ 60	
6	Dielectric Breakdown	KV	D-48/50	43	≥ 40	
7	Moisture Absorption	%	D-24/23	0.058	≤ 0.5	
8	Flammability	-	C-24/23/50+E-24/125	94 v-o	94 v-o	
9	CIT	Grade(PLC)	IEC60112	100≤CTI<175	-	
10	Peel Strength (THE Ioz)	Lb/in	288Cx10Sec solder floating	8	≥ 6	
11	Thermal Stress Test	-	2880Cx10Secx 6cycle floating	Pass	Pass	
12	Flexural Strength	LW	N/mm2	A	501	≥ 415
		cw	N/mm2	A	441	≥ 345
13	TD (5% Weight loss)	Degree C	TGA	300	-	
14	Glass Transition Temperature	Degree C	DSC	127	≥ 110	

G10 Green Insulation Epoxy Sheet

Description:

Green coloured epoxy glass laminate (G10), with glass cloth reinforcement for enhanced strength.

Typical Uses:

Mechanical supports, motor insulation, aerospace components, Printed circuits, rigid PCBs, rugged applications.

Key Test Certificate Parameters:

Insulation resistance $\geq 1 \times 10^{12} \Omega$; Dielectric strength $\geq 18 \text{ kV/mm}$; Flexural strength $\geq 350 \text{ MPa}$; Water absorption $\leq 0.10\%$; Thermal class F (155 °C).

Thickness & Size: 0.5mm to 30mm (Size: 1020*1220 and 1220*2440 and 1220*2040)



Code	Characteristic	Unit	Test Condition	Value	Spec.	
1	Volume Resistivity	MO-cm	c-96/35/90	6.1×10^7	$\geq 10^6$	
2	Surface Resistivity	M	c-96/35/90	2.1×10^5	$\geq 10^4$	
3	Permittivity(1MHz)	At 1MHz	c-24/23/50	4.91		
4	Loss Tangent	At 1MHz	c-24/23/50	0.032	≤ 0.035	
5	Arc Resistance	Sec	D-48/50+D-O.5/23	95	≥ 60	
6	Dielectric Breakdown	KV	D-48/50	43	≥ 40	
7	Moisture Absorption	%	D-24/23	0.058	≤ 0.5	
8	Flammability	-	C-24/23/50+E-24/125	HB	HB	
9	CIT	Grade (PLC)	IEC60112		-	
10	Peel Strength(THE IOZ)	Lb/in	2880Cx10Sec solder floating	8.2	≥ 6	
11	Thermal Stress Test	-	2880Cx10Secx 6cycle floating	pass	pass	
12	Flexural Strength	Lw	N/mm ²	A	501	≥ 415
		Cw	N/mm ²	A	438	≥ 345
13	T260	Min	TMA	23	-	
14	TD(5% weight loss)	Degree C	TGA	300	-	
15	Glass Transition Temperature	Degree C	DSC	120	≥ 110	

Vulcanized Fiber Sheet (Red, Black, White)

Description:

Cellulose fiber bonded by chemical treatment and pressure; lightweight, tough, and arc-resistant.

Typical Uses:

Slot liners, gaskets, washers, protective barriers in motors and transformers.

Key Test Certificate Parameters:

Dielectric strength ≥ 12 kV/mm; Tensile strength ≥ 100 MPa; Water absorption $\leq 6\%$; Thermal class A (105 °C).

Thickness & Size: 0.5mm & 0.8mm (Roll 840mm) 1,1.5,2mm (Size: 1000*1600mm).



Code	Characteristic	Unit	Test Condition	Test Value :HB-77N
1	Thickness	mm	23°C50%RH	0.25
2	Density	g/cm ³		1.06
3	Tensile strength (Machine direction)	Mpa		85
4	Tensile strength (Cross direction)			38
5	Bending resistance (Machine direction)	Mm		0.5
6	Bending resistance (Cross direction)			0.1
7	Thermal contraction rate (Machine direction)	%	105°C/5hrs	0.8
8	Thermal contraction rate (Cross direction)			1.9
9	Thermal contraction rate (Thickness)			3.6
10	Breakdown strength	kV/mm	105°C/24h	38.5
11	Moisture	%	105°C/24h	10 or less

Polyimide Film (amber, yellow)

Description:

Polyimide film is a high-performance polymer film known for its excellent thermal stability, mechanical strength, chemical resistance, and electrical insulation properties.

It retains performance across a wide temperature range (-250°C to +400°C) and is widely used in demanding industrial and electronic applications.

Typical Uses:

Flexible printed circuits (FPC), Electrical insulation in motors, transformers & cables, High-temperature masking (powder coating, soldering), Aerospace and automotive insulation components, 3D printing base film, Battery insulation layers (lithium-ion cells), Sensor components and flexible heaters .

Key Test Certificate Parameters:

Dielectric Strength (ASTM D149), Surface & Volume Resistivity (ASTM D257), Water Absorption (ASTM D570), temperature range (-250°C to +400°C)

Thickness & Size: 0.8mil, 1/2/3/5/7 mil (Size: width 500mm & Length: 810/1800/2100mm).



Properties	Test Items	Units	Thickness					Test Condition	Test Method
Mechanical	Thickness	μ m	12.5	25	30	50	75	20° C	ASTM D1505
	Tensile Strength	Mpa	150	180	180	180	160	20° C	JB/T 2726-1996
	Elongation	%	60	70	70	70	90	20° C	JB/T 2726-1996
Electrical	Dielectric Breakdown Voltage	MV/m	240	260	250	210	185	60Hz, 20° C	JB/T 2726-1996
	Dielectric Constant	-	3.2	3.2	3.2	3.2	3.2	1MHz, 20° C	ASTM D150
	Volume Resistivity	Ω·m	≥1.0×10 ¹³	≥1.0×10 ¹³	≥1.0×10 ¹³	≥1.0×10 ¹³	≥1.0×10 ¹³	500V, 20° C	ASTM D257
	Surface Resistance	Ω	≥1.0×10 ¹³	≥1.0×10 ¹³	≥1.0×10 ¹³	≥1.0×10 ¹³	≥1.0×10 ¹³	500V, 20° C	ASTM D257
Thermal	Coefficient of Thermal Expansion	ppm/° C	< 27	< 30	< 30	< 35	< 35	100~200 ° C	ASTM D5213-04
	Heat Shrinkage	%	< 0.03	< 0.03	< 0.05	< 0.05	< 0.05	200° C, 2hrs	JB/T 2726-1996
Physical	Density	g/cm 3	1.425					20° C	ASTM D1505

Electrical Insulation Pressboard

Description:

Thick, compressed cellulose or cellulose-fiber board for insulation, especially under high electrical and mechanical stress.

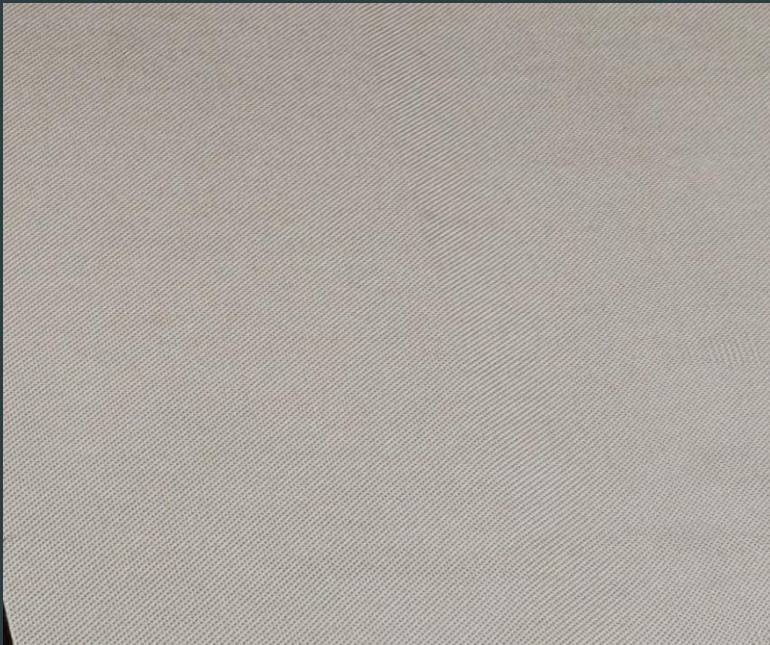
Typical Uses:

Core spacers in transformers, between windings, in oil-immersed equipment.

Key Test Certificate Parameters:

Density 1.1-1.3 g/cm³; Dielectric strength (in oil) ≥10 kV/mm; Moisture content ≤6%; Thermal class A (105 °C).

Thickness & Size: 1mm to 5mm (Size: 1050*2000mm).



Item	Unit	1mm	1.5mm	2mm	3mm	5mm
Thickness & tolerance	%	±7.5	±5.0	±5.0	±5.0	±5.0
Apparent densit	g/cm ³	1.1~1.3	1.1~1.3	1.1~1.3	1.1~1.3	1.1~1.3
Moisture content	%	≤6	≤6	≤6	≤6	≤6
Water extract PH	-	6.5-8.5	6.5-8.5	6.5-8.5	6.5-8.5	6.5-8.5
Ash content	%	≤1.0	≤1.0	≤1.0	≤1.0	≤1.0
Oil absorbency	%	≥10	≥10	≥10	≥10	≥10
Transformer oil contamina		No	No	No	No	No
Tensile strengt MD	N/10mm	≥110	≥110	≥110	≥110	≥110
Tensile strengt CD	N/10mm	≥80	≥85	≥80	≥80	≥80
Elongation MD	%	≥7.0	≥7.0	≥7.0	≥7.0	≥7.0
Elongation CD	%	≥9.0	≥9.0	≥9.0	≥9.0	≥9.0
Shrinkage MD	%	≤0.7	≤0.7	≤0.7	≤0.7	≤0.7
Shrinkage CD	%	≤1.0	≤1.0	≤1.0	≤1.0	≤1.0
Shrinkage Thickness	%	≤5.0	≤5.0	≤5.0	≤5.0	≤5.0
Electric strength - In air	KV/mm	≥10	≥10	≥10	≥10	≥10
Electric strength - In Oli	KV/mm	≥40	≥30	≥25	≥25	≥25

Phenolic Cotton Fiber Sheet

Description:

Sheet composed of cotton fiber impregnated with phenolic resin; good mechanical strength, resistance to moisture and chemicals.

Typical Uses:

Mounting boards, switchgear parts, insulating supports, trim panels.

Key Test Certificate Parameters:

Electrical insulation is good; dielectric strength decent; performance in moist/humid conditions lower than epoxy-glass but acceptable for many uses.

Thickness & Size: 1 mm to 50 mm (Size: 1020*1220 and 1020*2040mm).



Parameter	Unit	Test Result
Density	g/cm ³	1.35
Water Absorption	%	0.5
Tensile Strength	MPa	120
Flexural Strength	MPa	170
Compressive Strength	MPa	250
Impact Strength	kJ/m ²	8
Electrical Insulation Resistance	Ω	1×10 ¹²
Dielectric Strength	kV/mm	12
Thermal Class	°C	Class B (130°C)
Dimensional Stability	-	Pass

Bakelite Sheet

Description:

Bakelite sheet is a **thermosetting phenolic resin-based laminate**, often reinforced with paper or cotton fabric layers. These layers are impregnated with phenolic resin and then hot-pressed under high temperature and pressure to form a **hard, dense, and durable insulating sheet**.

Typical Uses:

Terminal strips, switchgear parts, fuse holders, insulating barriers, Structural & Mechanical Parts, Mounting & Support Boards, Machined Parts, Jigs, fixtures, and mounting plates.

Key Test Certificate Parameters:

Heat deflection temperature, dielectric breakdown voltage, mechanical strength, colour consistency, hard-wax finish quality.

Thickness & Size: 1 mm to 50 mm (Size: 1220*1220 and 1220*2440mm).



Parameter	Unit	Test Result
Density	g/cm ³	1.4
Water Absorption	%	1.2
Tensile Strength	MPa	100
Flexural Strength	MPa	150
Compressive Strength	MPa	220
Impact Strength	kJ/m ²	6
Electrical Insulation Resistance	Ω	1×10 ¹¹
Dielectric Strength	kV/mm	10
Thermal Endurance	°C	Class B (130°C)
Surface Hardness	Rockwell M	100

Polycarbonate Sheet

Description:

Transparent or translucent thermoplastic sheet with high impact resistance, good electrical insulation, and UV resistance.

Typical Uses:

Protective covers, guard panels, lighting diffusers, transparent insulating barriers.

Key Test Certificate Parameters:

Impact (drop ball) test, optical clarity / light transmission, UL insulation rating, UV stability, flame retardancy.

Thickness & Size: 1 mm to 20 mm (Size: 2050*3050 and 1220*2440mm).



Parameter	Unit	Test Result
Density	g/cm ³	1.2
Light Transmission	%	90
Impact Strength	Izod kJ/m ²	80
Tensile Strength	MPa	65
Flexural Strength	MPa	90
Elongation at Break	%	120
Vicat Softening Point	°C	150
Heat Deflection Temperature	°C	135
Flammability Rating (UL 94)	-	V-2
UV Resistance	-	Yes

Acrylic Sheet

Description:

Acrylic sheet (also known as PMMA - Polymethyl Methacrylate) is a transparent thermoplastic sheet known for its high clarity, smooth surface, and weather resistance. It is lightweight yet strong, with good electrical insulating properties, making it suitable for protective and decorative applications in electrical systems.

Typical Uses:

Electrical & Electronic Panels, Display Boards & Signage, Protective Shields, Lighting Applications, Aesthetic panels, showcases, and partitions.

Key Test Certificate Parameters:

Light transmission %, surface hardness, scratch resistance, weathering tests, dimensional tolerance.

Thickness & Size: 1 mm to 20 mm (Size: 2050*3050 and 1220*2440mm).



Parameter	Unit	Test Result
Density	g/cm ³	1.19
Light Transmission	%	92
Tensile Strength	MPa	70
Flexural Strength	MPa	110
Elongation at Break	%	5
Impact Strength	Izod kJ/m ²	15
Vicat Softening Point	°C	105
Heat Deflection Temperature	°C	95
Flammability Rating (UL 94)	-	HB
Surface Hardness	Rockwell M	100

Epoxy Fiber Tube

Description:

Tubular components made from epoxy-impregnated fiber (glass ideally), giving high strength along the tube.

Typical Uses:

Insulator sleeves, standoff insulators, spacers for rotating machines, supports.

Key Test Certificate Parameters:

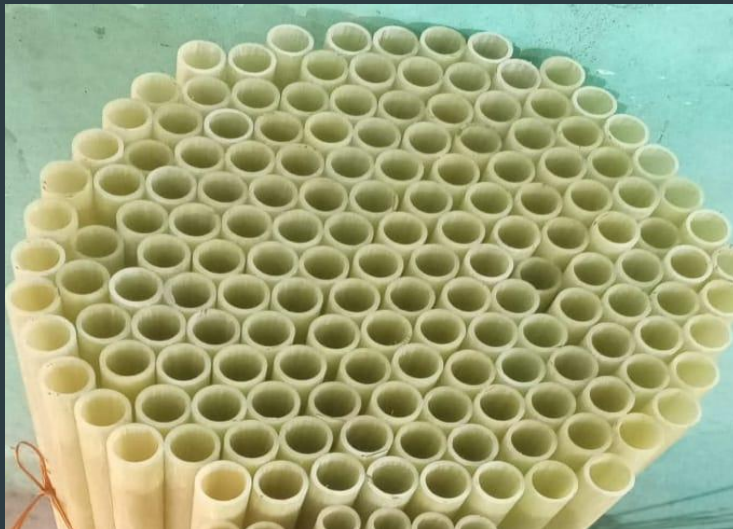
Radial & axial strength, dielectric breakdown, concentricity, thermal ageing.

Thickness & Size:

Inner Diameter: 5 to 300mm, Outer Diameter: 10 to 350mm, Wall Thickness: 1 to 25mm

Standard Length: 1000mm (1metre)

Form Available: Straight tubes, machined / cut pieces



Parameter	Unit	Test Result
Density	g/cm ³	1.85
Water Absorption	%	0.3
Tensile Strength	MPa	300
Flexural Strength	MPa	350
Compressive Strength	MPa	300
Impact Strength	kJ/m ²	12
Electrical Insulation Resistance	Ω	1×10 ¹³
Dielectric Strength	kV/mm	16
Thermal Class	°C	Class F (155°C)
Dimensional Accuracy (ID/OD)	mm	±0.1

Epoxy Fiber Rod

Description:

Rods of epoxy-glass or similar fiber composite; strong, rigid, electrically insulating.

Typical Uses:

Shafts, supports, bushings, pins in electrical assemblies and motor parts.

Key Test Certificate Parameters:

Tensile & flexural strength, dielectric withstand voltage, moisture absorption, diameter tolerance.

Thickness & Size:

Diameter Range : 3 to 100 mm,

Standard Length: 1000mm (1metre)

Form Available: Solid straight rods, cut-to-length pieces



Parameter	Unit	Test Result
Density	g/cm ³	1.9
Water Absorption	%	0.3
Tensile Strength	MPa	350
Flexural Strength	MPa	400
Compressive Strength	MPa	300
Impact Strength	kJ/m ²	14
Electrical Insulation Resistance	Ω	1×10 ¹³
Dielectric Strength	kV/mm	18
Thermal Class	°C	Class F (155°C)
Diameter Tolerance / Straightness	mm	±0.05

PP / Delrin Sheet

Description:

Polypropylene (PP) or Delrin (acetal) type engineering plastic sheets; good wear resistance, chemical resistance, low friction.

Typical Uses:

Bushings, lining, sliding parts, laboratory equipment, food / chemical contact where insulation plus chemical resistance is needed.

Key Test Certificate Parameters:

Tensile strength, elongation, chemical exposure tests, surface finish, hardness.

Thickness & Size: 1 mm to 50 mm (Size: 1000*2000 and 1220*2440mm).



PP Sheet TC		
Parameter	Unit	Test Result
Density	g/cm ³	0.91
Water Absorption	%	0.01
Tensile Strength	MPa	35
Flexural Modulus	MPa	1500
Elongation at Break	%	200
Impact Strength	kJ/m ²	8
Heat Deflection Temperature	°C	100
Flammability Rating (UL 94)	-	HB
Chemical Resistance	-	Excellent

Delrin Sheet		
Parameter	Unit	Test Result
Density	g/cm ³	1.42
Water Absorption	%	0.2
Tensile Strength	MPa	70
Flexural Strength	MPa	110
Elongation at Break	%	40
Impact Strength	kJ/m ²	12
Heat Deflection Temperature	°C	120
Surface Hardness	Rockwell M	90
Creep Resistance	-	Good
Dimensional Stability	-	Excellent

Synthetic Cryolite White Powder

Description:

Sodium aluminum fluoride (Na_3AlF_6) white crystalline powder; inorganic chemical.

Typical Uses:

Flux in aluminum smelting, ceramics, abrasives, glass industry.

Key Test Certificate Parameters:

Purity $\geq 98\%$; Moisture $\leq 0.3\%$; Bulk density 0.9-1.1 g/cm³; Insoluble matter $\leq 0.5\%$

Mesh: 325 **Packing available :** 25Kg bag



Certificate Of Analysis		
Indicator	Standard value (%)	Measured value (%)
F	≥ 52	53.26
AL	≥ 12	13.53
Na	≤ 33	32.12
SiO ₂	≤ 0.36	0.13
Fe ₂ O ₃	≤ 0.08	0.06
SO ₄ ²⁻	≤ 1.0	0.072
CaO	≤ 0.2	0.1
P ₂ O ₅	≤ 0.03	0.02
Moisture	≤ 0.3	0.01
L.O.I	≤ 2.5	1.5
Particle size	320mesh	98min

Contact Information

Address:

Ground floor, Kh. No-144/66 & 67, Extended Lal Dora,
Kanjhawala, New Delhi-110081, India

GST No.: 07BIBPJ4002P1ZC

Registered Importer-Exporter (IEC) – for international trade

Contact Person: Sant Kumar Jha

Call/WhatsApp : +91 89202 96355

Email: jankitraders79@gmail.com

Website: www.jankitraders.com

Trusted Member :



Follow us on:



@Janki traders



@jankitraders79

Banking Details

UCO BANK

Mangolpur Khurd ,

New Delhi - 110083

Account Number: 34240510000113

IFSC Code: UCBA0003424

MSME (Udyam Registration)

UDYAM REGISTRATION CERTIFICATE

UDYAM REGISTRATION NUMBER

UDYAM-DL-06-0138376

NAME OF ENTERPRISE

JANKI TRADERS

TYPE OF ENTERPRISE *

SNo.	Classification Year	Enterprise Type	Classification Date
1	2025-26	Micro	01/04/2025
2	2024-25	Micro	22/10/2024

MAJOR ACTIVITY

MANUFACTURING

SOCIAL CATEGORY OF ENTREPRENEUR

GENERAL

NAME OF UNIT(S)

S.No.	Name of Unit(s)
1	JANKI TRADERS

OFFICIAL ADDRESS OF ENTERPRISE

Flat/Door/Block No.	KH NO. 144/66 AND 67	Name of Premises/ Building	GROUND FLOOR
Village/Town	VILLAGE KANJHAWALA	Block	EXTENDED LAL DORA
Road/Street/Lane	NEAR SHIV MANDIR	City	DELHI
State	DELHI	District	NORTH WEST , Pin 110081
Mobile	9717050894	Email:	cankg2019@gmail.com

DATE OF INCORPORATION / REGISTRATION OF ENTERPRISE

19/07/2024

DATE OF COMMENCEMENT OF PRODUCTION/BUSINESS

19/07/2024

NATIONAL INDUSTRY CLASSIFICATION CODE(S)

SNo.	NIC 2 Digit	NIC 4 Digit	NIC 5 Digit	Activity
1	46 - Wholesale trade, except of motor vehicles and motorcycles	4690 - Non-specialized wholesale trade	46909 - Other non-specialised wholesale trade n.e.c.	Trading

India Mart Certificate of Trust



CERTIFICATE OF TRUST

Janki Traders

New Delhi, Delhi

has been certified as a trusted member of IndiaMART

Following details of the company have been verified*

- ✓ Director Proprietor: **Mrs. Annu Jha**
- ✓ GSTIN: **07BIBPJ4002P1ZC**
- Business Address: **Ground Floor, KH No. 144/66 And 67,
Extended Lal Dora, Village Kanjhawala, Near Shiv Mandir,
Kanjhawala, New Delhi, Delhi, 110081**

Following details of the *The process of verification has been carried out by independent third party for Indiamart.



IndiaMART InterMESH Ltd.
7th Floor, Advant-Navis Business Park, Plot No-7, Sector-142, Noida, UP
☎ 096-9696-9696 | ✉ customercare@indiamart.com

Thank you