



**Delta  
Polycoats  
Pvt. Ltd**



**Epoxy | PU | EPU Flooring | PU Wall Coating Waterproofing | Anti - Corrosive Coating**

+91 8208 0744 97

deltapolycoats@gmail.com.

www.deltapolycoats.com

Flat No-S-503, Salil Building, Suvida nisarg, At post- Bandewadi, ,Tal-Haveli, Dist-Pune.

DELTA  
POLYCOATS



**About**

# Delta Polycoats

***Lorem ipsum dolor sit amet, consectetur adipiscing elit. Integer fermentum vulputate felis, vitae dignissim dui tristique sed. Aliquam erat volutpat.***

*Welcome to Delta Polycoats, a trusted name in the world of epoxy resin and liquid epoxy manufacturing. With a legacy of 5 years in the industry, we have consistently delivered high-quality, innovative solutions to meet the diverse needs of our customers.*

---

[www.deltapolycoats.com](http://www.deltapolycoats.com)

# About Delta Polycoats

Welcome to Delta Polycoats, a trusted name in the world of epoxy resin and liquid epoxy manufacturing. With a legacy of 5 years in the industry, we have consistently delivered high-quality, innovative solutions to meet the diverse needs of our customers.

## ■ Our Products

▶ Industrial & commercial Flooring

▶ Concrete Repair Material

▶ Dust Proof Sealers

▶ Car Park Flooring

▶ Concrete Densifiers

▶ Wall Coating & Coving

▶ Anti Corrosive Coating

▶ Epoxy Tile Grout



## ■ Industrial & Commercial Flooring

- ▶ Epoxy Floor Coating
- ▶ Epoxy Flooring
- ▶ Industrial Epoxy Flooring
- ▶ PU Self level Flooring Service
- ▶ EPU Flooring
- ▶ ESD flooring
- ▶ P.U.Concrete Flooring
- ▶ Road Marking Paints
- ▶ Car Parking Flooring
- ▶ EPDM Coating





## ■ Epoxy Floor Coating

Epoxy coating is a durable, protective substance used to prevent carbon steel tanks from degradation on the outside. Epoxy coatings offer superior resistance to abrasion, turbulence, harsh chemicals, and severe temperatures. Epoxy coating is not only long-lasting but also resistant to a wide range of corrosive substances. Epoxies are a popular option for diverse industrial coating applications, such as steel, aluminium, and concrete among others.



### **Benefits:**

- ▶ **Durable and Resistant**
- ▶ **Reduces Damage to Machinery**
- ▶ **Resistant to Chemicals**
- ▶ **Attractive Floor Surface**
- ▶ **Safe Working Environment**
- ▶ **Fast Application**



## ■ Epoxy Flooring

Delta is the leading industrial epoxy flooring manufacturer in Pune, provides best industrial epoxy flooring service in almost all industrial and commercial verticals. Jemkon's range of industrial epoxy flooring solutions have been applied to more than a million sqft of the area at an affordable cost. Our industrial Epoxy Flooring are the most commonly used in situ types of material, which are also one of the widely accepted epoxy floor coating all over the world because of a variety of characteristics like adhesion, gloss, durability, etc.



### **Benefits:**

- Durable and Resistant.
- Reduces Damage to Machinery
- Resistant to Chemicals
- Attractive Floor Surface.
- Safe Working Environment.
- Environmentally Friendly





## ■ Industrial Epoxy Flooring

Our Epoxy flooring services are extremely highlighted for its marvelous strength, life-long efficiency, appealing look, and easy maintenance. The coating is done perfectly according to customer's choice so as to provide complete satisfaction. Moreover, our skilled personnel firmly follow all quality parameters & standards in providing these services to certify fivestar level.

### **Benefits:**

- **Durable and Resistant.**
- **Reduces Damage to Machinery**
- **Resistant to Chemicals**
- **Attractive Floor Surface.**
- **Safe Working Environment.**
- **Environmentally Friendly**



## ■ Epdm playground flooring

. SBR Rubber Base layer are made with tyre recycled crumb which is mixed with polyurethane Binder used 15% in Base. This base layer is for cushion purpose only and Top layer is pure EPDM granules which is made with "Ethylene propylene diene monomer" with colour pigment. Granule standard size in 1-4 mm. EPDM granule have high weather and heat resistance properties mainly non-toxic product. which is mixed with polyurethane Binder used 20% in top layer



### Benefits:

- Versatility and Customization Options.
- Weather Resistance
- Environmental Friendliness.
- Easy Installation and Maintenance.
- Cost-Effective Solution.
- Superior Safety Features.





## ■ EPU Flooring

Delta, the best EPU flooring manufacturer in Pune, is unique as we combine the benefits of both epoxy and polyurethane for EPU floor coating. Epoxy Polyurethane hybrid flooring also known as flexo-hard flooring has a high amount of flexibility along with equally good toughness. Delta offers EPU flooring at a very reasonable rate for all industrial and commercial verticals.



### **Benefits:**

- High-grade abrasion strength properties.
- Ready in charming colours
- Exceptional adhesion to a substrate.
- Self-smoothing
- Shining exterior.
- Easy to perform.

## ■ ESD flooring -Antistatic/Electrostatic Epoxy Flooring

ESD flooring standards are based on an ESD flooring/footwear combination. Some, but not all, ESD floors also prevent charge generation – i.e., static from accumulating as people walk. Thus, it's critical to determine the type of footwear people will use in the space.



### **Benefits:**

- Controls static discharge.
- Grounds people and products
- Durable
- Low maintenance
- Easy to clean



## **P.U.Concrete Flooring**

PU concrete floorings do provide a matt finish and are insensitive to moisture in the base of the concrete floor surface. Hence these systems are ideally suitable not only as moisture-barrier underlays but also as stand-alone floor toppings that can resist high impact and abrasion and can withstand steam cleaning. The flooring system provides high-gloss, ultra-durable use in various commercial and industrial facilities.



### **Benefits:**

- **Excellent abrasion and impact resistance**
- **Seamless and hygienic finish.**
- **Easy to apply.**
- **Excellent resistance to a wide range of chemicals**
- **Solvent-free and low odour during installation.**



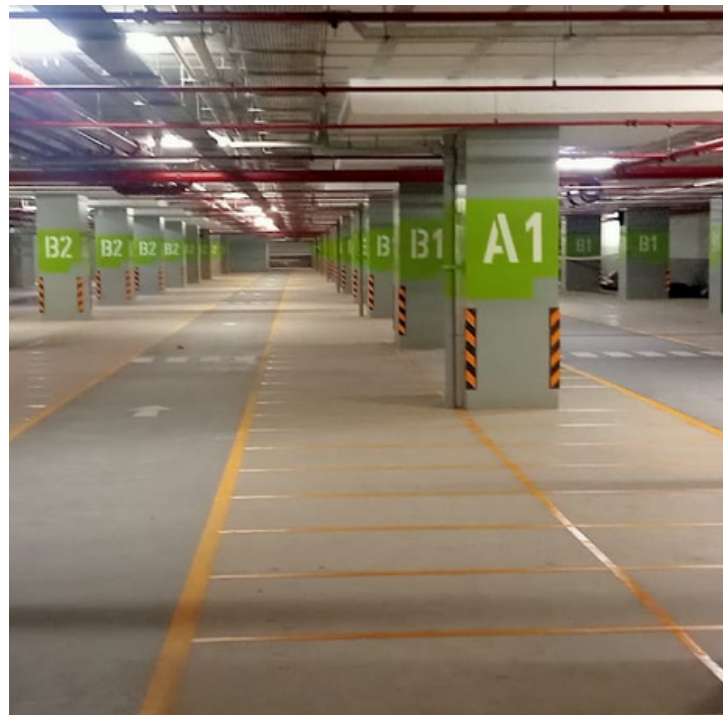


## ■ Road Marking Paints

Road Marking's always serves as a visual barrier and signify the delineation of traffic path and the lateral clearance from traffic hazard for the safe, smooth and orderly movement of traffic. Apart from traffic guidance, they also serve as a tool for controlling, warning and providing information to road users.

### **Benefits:**

- **Exceptional Durability**
- **High Visibility**
- **Quick Drying and Curing**
- **Environmentally Friendly**
- **Resistance to Weather Extremes**
- **Cost-Effectiveness**





## ■ Car Parking Flooring

Car parks are unique buildings in that almost all elements of the structure are normally exposed to the public. These constructions face unique challenges as well as exposure to niche stresses, not to mention substantial chemical and physical abuse.



### **Benefits:**

- It protects the surface
- It's easy to clean
- It has excellent fire ratings
- It dries faster than other coatings
- It looks exceptional, with a clean
- It reflects light, which adds to car park visibility and safety



# *Our* **Network**

**Lorem ipsum dolor sit amet, consectetur adipiscing elit. Integer fermentum vulputate felis, vitae dignissim dui tristique sed. Aliquam erat volutpat. Quisque aliquam enim dolor, eget luctus nunc tincidunt et.**



***Thank You!***



**Our Contact:**

 +91 8208 0744 97  [www.deltapolycoats.com](http://www.deltapolycoats.com)  [deltapolycoats@gmail.com](mailto:deltapolycoats@gmail.com).

 Flat No-S-503, Salil Building, Suvida nisarg, At post- Bandewadi, ,Tal-Haveli, Dist-Pune.