

# NBESON

WATER METERS



a name of  
**QUALITY & ACCURACY**

AN ISO CERTIFIED COMPANY

# COMPANY PROFILE

NBESON Engg. Works are one of the leading manufactures & exporters of NBESON water meters having international standards in the country. Our company has acquired an established reputation and goodwill in the domestic market and abroad for its sturdy workmanship, perfect quality and performance all around.

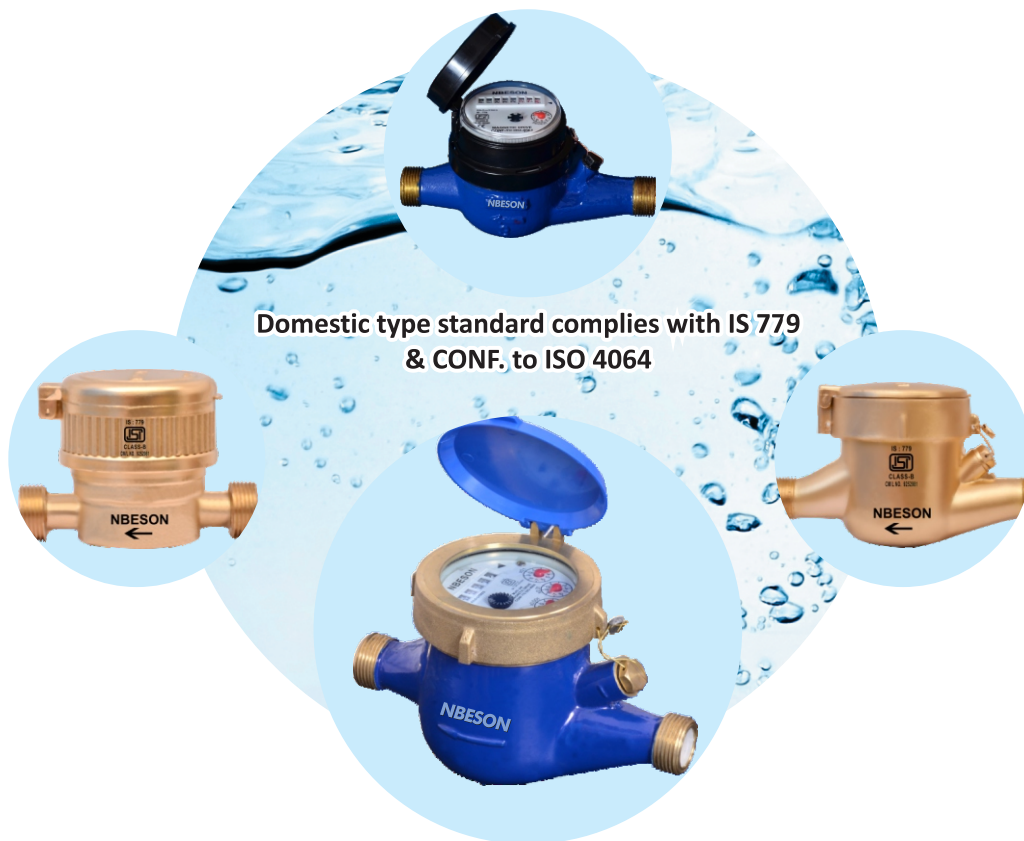
NBESON ENGINEERING WORKS Established in 1999 developing for several decades, our company is now specialized in various water meters and accessories, such as hot-water and cold-water meters, Bulk Type Water Meters, Woltman Type Water Meters, Industrial Water Meters, which are applicable to Domestic, Industries etc. under able guidance and leadership of S. Rajinder Singh (Director) along with his team of young professional directors having extensive and understanding of the trade and customer's needs across the world.

Our company is having sound infrastructure to manufacture and maintain the quality of NBESON Water Meters backed by state of the art machinery, high quality raw materials and high testing standards. All these are run by experienced Engineers and staff of the company to ensure mark standards of accuracy for our Water Meters.

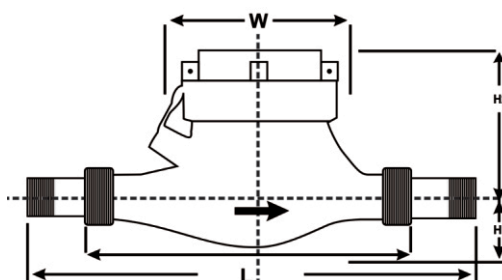
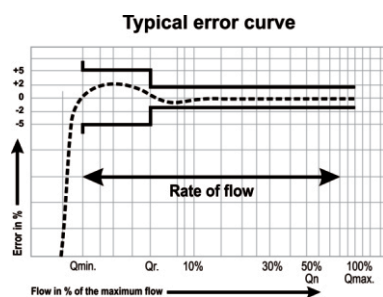
The development direction of water meter products home and abroad, we make great effort to keep the quality in pace with that of the international excellence. In addition, a full set of rigid procedure control in the process of material purchase, product design, parts' process ability detection, packaging, etc is drafted. The qualification rate of outgoing products is 100% by the efforts of professionals & technical, group of employees passing the strict professional training and the quality assurance made by variable testing workers according to the national standards.

As our company has passed the ISO 9001-2015, ISO 14001 : 2004, CE Quality Management System Certification so that the quality of the products is reliable and assured to the broad users in the markets of the whole world, and the same is true in the periodic supervisory inspection at various and national levels, market selective examination. Our company pursue the business concept "win by quality", continuously aiming to develop high-quality and high class innovative products, favored and introduced highly by consumers with our excellent quality and service, best competing prices. Your presence and business negotiation with us are warmly welcomed.





Metrological Performance	Meter Size		15 mm	20 mm	25 mm	40 mm	50 mm	Accuracy	
	QM	Maximum Flow Rate	3	5	7	20	30	K.LH	±2%
	QN	Nominal Flow Rate	1.5	2.5	3.5	10	15	K.LH	±2%
	QT	Class - B Transitional Flow Rate	120	200	280	800	1200	L.H.	±2%
	QMin.	Class - B Minimum Starting Flow Rate	30	50	70	200	300	L.H.	±5%
Registration	Smallest Registration		0.2	0.5	1	2	2	Ltrs.	
	Class - B Maximum Registration		99999	99999	99999	99999	99999	K.L.H.	
Pressure Tightness Test	QM	Head Loss Not Exceeding	0.1	0.1	0.1	0.1	0.1	MPa	
	QN	Head Loss Not Exceeding	0.025	0.025	0.025	0.025	0.025	MPa	
		Working Pressure 1.6 MPa	1.6	1.6	1.6	1.6	1.6	MPa	
		Pressure Tightness Test 2.0 Mpa	2.0	2.0	2.0	2.0	2.0	MPa	
Dimensions	Temperature Suitability		50°C	50°C	50°C	50°C	50°C	50°C	
	Length of Meter Including Nipple		250	290	380	430	470	+500	
	Length of Meter without Nipple								
	Class - B		110	165	x	x	x	mm	
	Width Max.		100	130	170	210	270	mm	
	Height Max. H - 1		50	60	65	75	115	mm	
	Height Max. H - 2		80	240	260	300	300	mm	





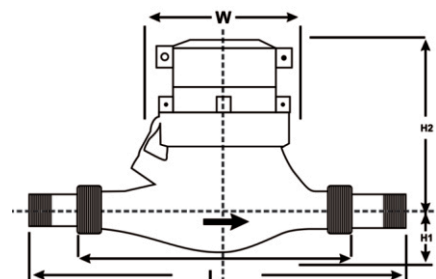
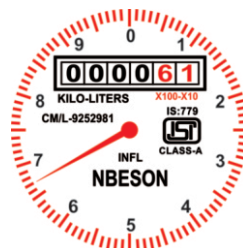
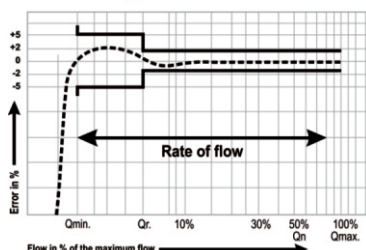
## Domestic type standard complies with IS 779



		Meter Size	15 mm	20 mm	25 mm	40 mm	50 mm		
Metrological Performance	QM	Maximum Flow Rate	3	5	7	20	30	K.LH	±2%
	QN	Nominal Flow Rate	1.5	2.5	3.5	10	15	K.LH	±2%
	QT	Transitional Flow Rate							
	QMin.	Class - A	150	250	350	1000	1500	L.H.	±2%
		Minimum Starting Flow Rate	60	100	100	400	600	L.H.	±5%
	Registration	Smallest Registration	0.2	0.5	1	2	2	Ltrs.	
		Class - A	99999	99999	99999	99999	99999	K.L.H.	
Pressure Tightness Test	QM QN	Maximum Registration							
		Head Loss Not Exceeding	0.1	0.1	0.1	0.1	0.1	MPa	
		Head Loss Not Exceeding	0.025	0.025	0.025	0.025	0.025	MPa	
		Working Pressure 1.6 MPa	1.6	1.6	1.6	1.6	1.6	MPa	
		Pressure Tightness Test 2.0 Mpa	2.0	2.0	2.0	2.0	2.0	MPa	
		Temperature Suitability	50°C	50°C	50°C	50°C	50°C	50°C	
Dimensions		Length of Meter Including Nipple	250	290	380	430	470	+500	
		Length of Meter without Nipple							
		Class - A	165	190	260	300	330	mm	
		Width Max.	100	130	170	210	270	mm	
		Height Max. H - 1	50	60	65	75	115	mm	
		Height Max. H - 2	80	240	260	300	300	mm	

Sensitivity at the low flow: **NBESON** water meters are designed to provide with best sensitivity at the low flow rate and with precise accuracy that is preserved for long period.

Typical error curve





# SPECIFICATION FOR NBESON WATER METERS (BULK TYPE)

## ENCLOSED TYPE DRY-DIAL

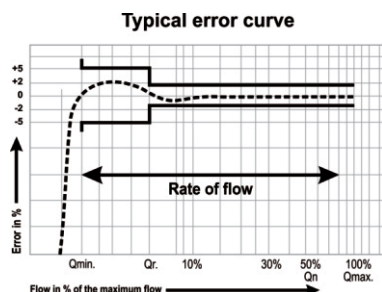


		Size of the Meter										
METROLOGICAL PERFORMANCE QMIN QT Q INTER QN REGISTRATION		50 mm	80 mm	100 mm	150 mm	200 mm	250 mm	300 mm	350 mm	400 mm	500 mm	600 mm
	Maximum Recording Capacity Liters	100 Million	100 Million	1000 Million	1000 Million	1000 Million	1000 Million	10000 Million	10000 Million	10000 Million	100 Million	10000 Million
	Mniimum Readable Capacity Liters	10	10	100	100	100	100	100	1000	1000	1000	1000
	Nominal Capacity At 3M Liters per hour	50000	120000	200000	500000	800000	1100000	1500000	200000	3000000	5000000	7000000
	Intermediate flows At 1M Liters per hour ±2%	20000	62000	100000	250000	400000	550000	750000	1000000	1500000	2000000	3500000
	Metering Accuracy At Liters per hour ±2%	1666	4166	6666	16666	26666	36666	5000	66666	10000	166666	233333
	Minimum Starting Flows At Liters per hour	500	1000	1500	3500	5500	9000	14000	20000	25000	35000	45000
Test Pressure MPA		1.6 Mpa	1.6 Mpa	1.6 Mpa	1.6 Mpa	1.6 Mpa	1.6 Mpa	1.6 Mpa	1.6 Mpa	1.6 Mpa	1.6 Mpa	1.6 Mpa
Temperature Suitability		45°C	45°C	45°C	45°C	45°C	45°C	45°C	45°C	45°C	45°C	45°C
DIMENSIONS												
	Outside Diameter Of Flanges	165	200	220	285	340	395	445	505	565	670	780
	Dia of Bolt Circle	125	160	180	240	295	350	400	460	515	620	725
	Thickness of Of Flanges	19	21	22	24.5	24.5	26	27.5	29	30	33	36
	Holes Number	4	4	8	8	8	12	12	16	16	20	20
	Holes Dia	19	19	19	23	23	23	23	23	28	28	31
	Height Max. H-1	83	100	110	143	170	198	223	253	283	336	390
	Height Max. H-2	163	180	190	224	250	280	305	440	460	480	500

# PERFORMANCE DATA TABLE AS PER ISO: 4064 CLASS-B m<sup>3</sup>/h



Size Of The Meter			50 mm	80 mm	100 mm	150 mm	200 mm	250 mm	300 mm
METROLOGICAL PERFORMANCE	Q <sub>max</sub>	Maximum Flow ±2%	30	80	120	300	500	800	1200
	Q <sub>n</sub>	Nominal Flow ±2%	15	40	60	150	2.50	400	600
	Q <sub>t</sub>	Transitional Flow ±2%	3	8	12	30	50	80	120
	Q <sub>min</sub>	Minimum Flow ±5%	0.45	1.20	1.80	1.50	7.5	12	18
Test Pressure Mpa			1.6 Mpa	1.6 Mpa	1.6 Mpa	1.6 Mpa	1.6 Mpa	1.6 Mpa	1.6 Mpa
Temperature Suitability			45°C	45°C	45°C	45°C	45°C	45°C	45°C
DIMENSIONS	Outside Diameter Of Flanges		165	200	220	285	340	395	445
	Dia of Bolt Circle		125	160	180	240	295	350	400
	Holes Number		4	4	8	8	8	12	12
	Height		232	250	270	370	405	495	510



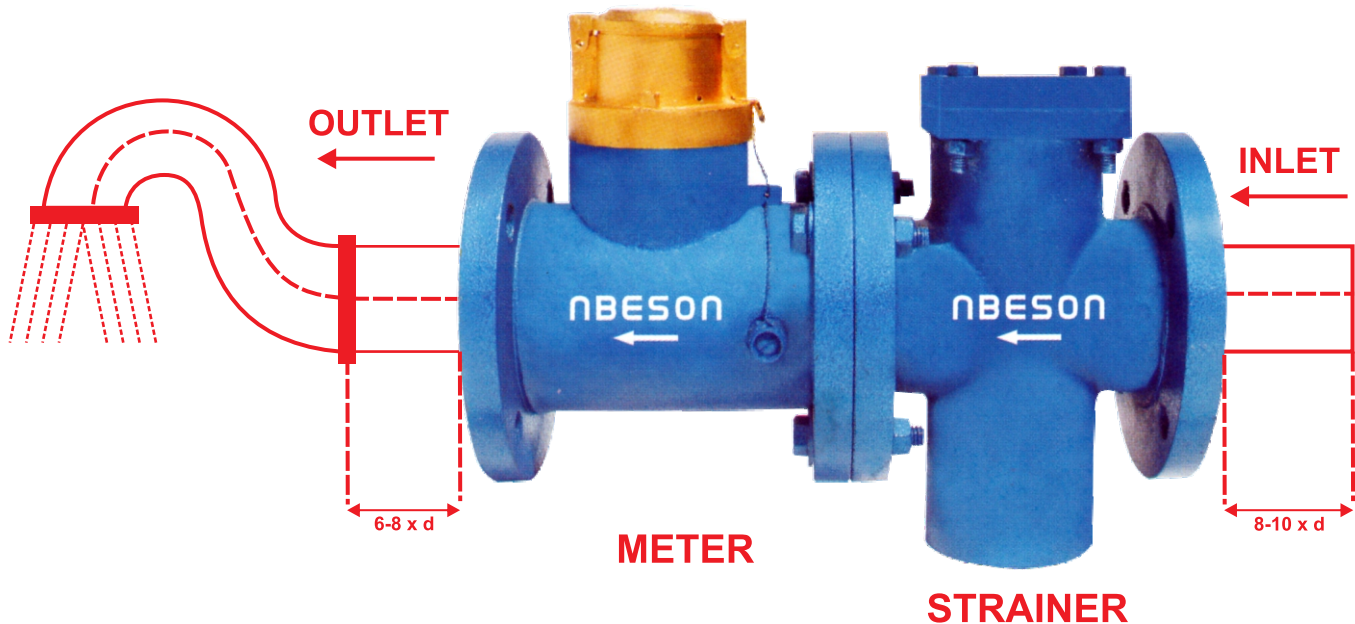
1. Dry Dial, Magnetic Drive.
2. Measuring Accuracy Confirming to ISO 4064 CLASS-B
3. Interchangeable Spare parts for easy maintenance
4. Online replacement of entire Mechanism
5. Registered Selected for Clear Reading
6. Selected High Quality Material for durability

The Dimensions, weight, design, colour & other things mentioned in the Literature are subject to change without prior notice

# NBESON

## WATER METERS

### STRAINER (DIRT BOX) "T" TYPE



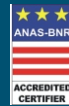
- o Size available from 40 mm to 900 mm
- o Provided Strainer before the meter to take better performance of the meter
- o Install the meter and the Strainer in Horizontal position as marked arrow ( ) on the strainer.
- o Flanges dimensions of Strainer is as per ISS unless otherwise specified

Notes :





जल है तो कल है।



**ISO 9001 : 2015  
& 14001 : 2004 Co.**

## **NBESON ENGG. WORKS**

38, Sudershan Nagar, 100 Ft. Road, AMRITSAR - 143 006 (INDIA)

Phone : 0183-2586936, +91-98142 98826, +91-98554 78826, +91-95920 20077

e-mail : [info@nbesonwatermeters.com](mailto:info@nbesonwatermeters.com), [nbesonmeters@rediffmail.com](mailto:nbesonmeters@rediffmail.com), [nbesonindia@gmail.com](mailto:nbesonindia@gmail.com)

[www : nbesonwatermeters.com](http://www.nbesonwatermeters.com)