

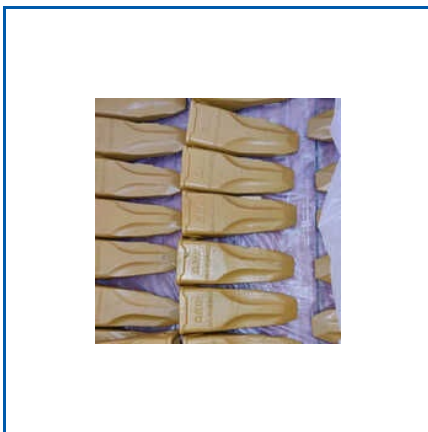


EXCAVATOR BUCKET H LINK

Forging Strength, Shaping the Future



01_Excavator Chain Sprocket, 02_Excavator Chain Sprocket, 03_Excavator Chain Sprocket, 4Ltr Rock Breaker Nitrogen Gas Cylinder, EC360 Chain Sprocket, EX350 Bucket Tooth Point, Earthmoving Bucket, Ex200-1 Track Roller, Excavator Bucket H Link, Excavator Bucket Teeth Adapter, Excavator Bucket Tooth Point, Excavator Chain Sprocket, Excavator Hydraulic Pump, Excavator Idler Assembly, Excavator Idler Yock, etc.



EXCAVATOR BUCKET TOOTH POINT



PC200RC TOOTH POINT



TOOTH POINT ITR EXCAVATOR BUCKET TEETH



About Us

A prestigious name in the heavy machinery and earthmoving products market is our company, Siyaram Earthmovers Private Limited. We are a trader, wholesaler, and exporter with more than 21 years of experience. We deal in a wide range of products that are the epitome of what is required to create a very effective and efficient operation and maintenance of earthmoving equipment. We offer Track Rollers, Excavator Tooth Adapters, Hydraulic Rock Breakers, Hydraulic Rock Breaker Pistons, Excavator Chain Sprockets, JCB Yellow Bucket Teeth, Seal Kits, Nitrogen Gas Cylinders, and so on.

Since our inception in 2003, we have always paid emphasis on quality and excellent customer service, which has made us a partner of choice for the construction, mining, and industrial sectors in both domestic and international contexts.



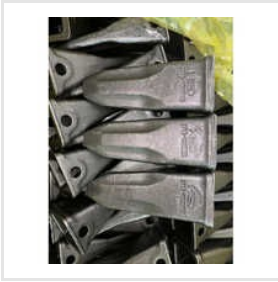


Key Facts

No of Staff	15
Year of Establishment	2003
OEM Service Provided	No



Our Products



Hyundai 210 Bucket Tooth Point



Track Bush



Excavator Track Adjuster Assembly



SY350 Bucket Tooth Point



SK 350 Kobelco Tooth Point



Excavator Track Link Chain Assembly



Excavator Track Guard



Excavator Track Adjuster Cylinder



Track Adjuster Spring



Excavator Track Adjuster Spring



Excavator Bucket H Link



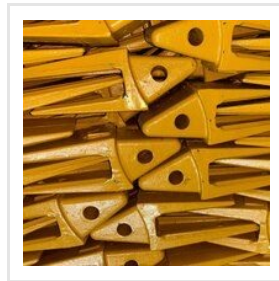
Track Shoe Plates



Ex200-1 Track Roller



Excavator Travel Device



Excavator Tooth Adapter



Excavator Track Roller





ADDRESS

AI-6/7, Rajlaxmi Commercial
Complex, Kalher Bhiwandi,
Maharashtra, India (421302).



EMAIL

siyaram.mh@gmail.com



MOBILE

+919892787674



WEBSITE

www.siyaramearthmovers.net

KEY PERSONNEL

Mr Vishal Sharma

(MANAGING DIRECTOR)