

MSME Certified Co.



ANCHOR REFRATORIES PVT. LTD

Protecting the nature since 1995.

(Acid Proof, Epoxy & Refractory Lining)



SPECIALIST IN :

- Acid Resistant Brick / Tile lining.
- Red Mandana Stone Flooring.
- Granite Lining
- Anticorrosive Coating
- Epoxy Coating / Flooring / Self-Leveling .
- Polyurethane Flooring (PU).
- Rubber Lining.
- FRP Lining.
- PPG Lining.
- Refractory Lining.
- Fabrication of Tanks & Vessels.

MSME Certified Co.

About Us:

We have the pleasure to introduce ourselves as one of the leading contractors in the field of Acid Proof, Epoxy and Refractory Lining Works in India and have also carried out projects overseas. We are based in Malad (Mumbai) with a manufacturing unit in Vasai (Palghar). We are Manufacturers and Suppliers of the materials used in bedding, pointing and coating works in Anti-Corrosive / Acid Resistant Lining and Refractory Lining works. We have experience in manufacturing all types of Pickling Tanks, application of all types of Industrial Flooring and also Acid / Alkali Resistant Lining work in various plants. The requirement of industries for corrosion resistance is so diverse and varied, that it is difficult to specify a universal Anti Corrosion Lining. As such we are offering you services of all types of Corrosion Resistant Lining on a single service platform. We have been in this field since 1995 and are highly experienced in the work we carry out.

We are always at your service and guarantee the quality of our work.

Our Works are in the below listed industries:

- Chemical Industries
- Pharmaceuticals
- Refineries
- Dairy
- Textile
- Fertilizers
- Petrochemicals
- Auto mobiles
- Hospitals
- Starch Plants
- Dyes and Intermediates
- Power Plants
- Oil & Gas
- Zinc Smelters
- Steel & Galvanisation
- Cement
- Aluminium

WE ARE MANUFACTURER & SUPPLIER OF THE FOLLOWING MATERIALS:-

- ❖ A.R Bricks & Tiles : Acid Resistant Bricks / Tiles are available in different sizes & colours.
- ❖ Ancro Epoxy : Our self manufactured, Ancro – floor epoxy is a widely applicable product against corrosion, it is useful in pharmaceutical plants as an Anti-dust / Anti-fungal flooring system. It is used as Screeding, Grouting, Coating and Joint filling material and also used for bonding old to new concrete and most suitable where mild acids are use.
- ❖ Furane : Furane is used as bedding and joint filling material for A.R brick / tile lining recommended against strong Acids / Alkalies.
- ❖ K-Silicate : Potassium Silicate mortar is used as bedding material for A. R Bricks / Tile lining.
- ❖ CNSL : A bedding & joint filling cement resist strong Acid / Alkalies used in A. R. Brick / Tile lining.
- ❖ Phenolic : A bedding & joint filling cement for A. R. Brick / Tile Lining recommended against dilute sulphuric acid oxidizing & organic chemicals etc.
- ❖ Bitumen Primer : An industrial Asphalt base anti corrosive primer used against atmospheric corrosion effects by acid fumes & dry wet gases.
- ❖ Mastic : Hot melt type corrosion resistant mortar used for protecting concrete structure against atmospheric corrosion.
- ❖ Polyester : The Basic material for F.R.P lining is also used as pointing cement which resists certain acids / alkalies and natural salts.

*******And All Types Of Refractory Materials Are Available*******

MSME Certified Co.

WE UNDERTAKE THE FOLLOWING TURNKEY PROJECTS

ACID RESISTANT BRICK LINING:

It is the most suitable lining system for corrosion protection in major chemical and fertiliser industries. Acid proof bricks in different sizes, colours and thickness are available . It is bedded and jointed with suitable acid proof mortars.



ACID RESISTANT TILE LINING :

This lining system is generally used in Battery rooms, Flooring, Drainage system etc. AR tiles are available in different sizes, colours and thickness. These tiles are bedded and jointed using suitable mortars.



EPOXY SCREEDING / FLOORING:

This is a solvent free clear epoxy lining system, useful in chemical storage tanks, pits, ETP tanks to name a few. The screeding / flooring can be done in varying thickness as per the clients requirements. This system has uses in many industries like dairy, aviation, sugar, textile, auto mobile and specially in pharmaceutical plants.



MSME Certified Co.

EPOXY SELF LEVELLING :

This flooring system has a thickness of over 1mm.

Epoxy based self leveling flooring produces a hygienic and glossy finish with an anti-dust quality which is easy to clean and maintain.

This has a good resistance to oil, grease and other chemicals.



EPOXY COATING :

This system is useful in chemical vessels, Effluent & waste water collection chambers and drainage systems. It is also used for flooring purposes. It is 2 or 3 coat system in microns. It is applied using brush / roller or a spray system.



ANTI-CORROSIVE COATING :

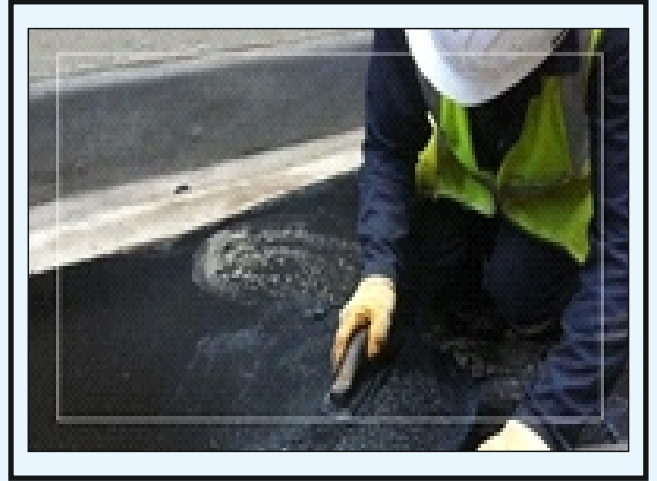
This coating system is specially for the exterior surface of chemical storage tanks, MS structures, Reactors, vessels etc. This system is available in chlorinated coating, silver zinc coating, zinc phosphate coating, red-oxide coating, polyurethane coating and epoxy coating. It is resistant to acid fumes and provides protection from environmental corrosion.



MSME Certified Co.

MASTIC FLOORING :

It is an Industrial Asphalt based chemical resistant flooring and has a hot melt application system. It provides good results in areas where there is heavy traffic, heavy loads and where mild chemicals are used. Mastic is also used in AR Brick / Tile lining and Mandana stone lining as a mortar.



GRANITE LINED PICKLING TANKS :

Full Granite Block Lined Pickling Tank is the present trend in the industry. This type of tank has prolonged maintenance free performance. We are in a position to supply and install special grade industrial granites, which are Acid Resistant and have high flexural & compressive strength. We are proud to state that we have developed a special sealing compound for filling the joints of Granite Blocks in Full Granite Pickling Tank. We also have our own design of FULL GRANITE LINED PICKLING TANK.



RUBBER LINING :

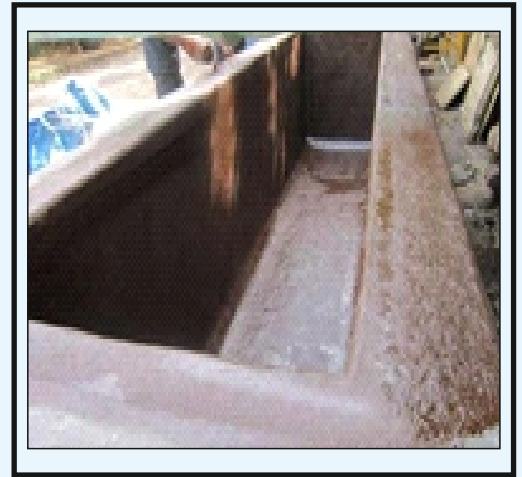
Of all the Corrosion Resistant Lining Systems, Rubber Lining is most popular because of its versatility and ease of application. The elasticity of Rubber is an advantage for combating abrasion and impacts and it can readily accommodate expansion and contraction due to fluctuation in temperature. Variety of grades of Rubber both in Natural and Synthetic category are available to suit specific medium of application, pH value, temperature, abrasive nature e.g. Butyle, E.P.D.M., Polychloroprene, N.B.R., Hyplone, etc. We will mutually select the type of Rubber and the thickness of lining best suited for your operations and carry out the work as per the provisions of IS.



MSME Certified Co.

F.R.P LINING :

Fiberglass Reinforced Plastic is a corrosion resistant lining material used to suit specific working conditions with reference to temperature, concentration of the product handled and the type of material being used. Various grades of Resins viz. Isophthalic, Bisphenol, Vinyl Ester & Epoxy etc are available. The advantage of F.R.P. is that this along with P.P. can be fabricated into vessels, tanks, ducts, hoods, piping, housings etc.



PPG LINING :

PPG lining has good resistance against acids, alkalis and certain chemicals under specific concentrations and temperatures. PPG sheets are fused on back side with a glass woven fabric at high temperature. This in line bonding gives the PPG sheets excellent bond strength. It protects civil structures against erosion from corrosive chemicals. It is useful in ETP, DM water plants, and on concrete floors where different chemicals are used. Available in 2mm thickness and 1.5 x10 metre length.



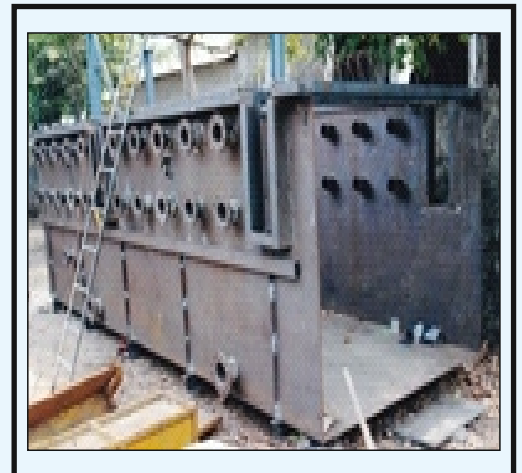
REFRACTORY LINING:

Refractory linings are generally designed to provide specific protection of various operating systems or environmental conditions. It provides good heat resistance and its application is mainly required in furnaces, boilers, pre heaters, chimneys and kilns in steel, fertilizer, petrochemical, cement industries etc. Heat conservation should be optimized within limits of sound refractory design. Refractory linings should be selected based on the most important physical property necessary for optimum, cost effective, performance.

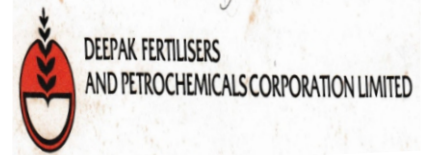


FABRICATION OF TANKS / VESSELS :

Our experience shows that many of the Fabricators are not aware of the design, details and the code to be followed while Fabricating a vessel which requires Rubber Lining and A.R. Brick Lining etc. This creates problem for us as well as our valued customers. To overcome this embarrassing situation and for the convenience of our customers we now have access to a well equipped Fabrication shop, manned by qualified technicians. We can undertake high quality Fabrication of process vessels, tanks, centrifuges, ventures, scrubbers, etc at our workshop as well as in-situ at customer's works.



OUR VALUED CLIENTS



ThyssenKrupp

REGISTERED ADDRESS

3, Sumtinath Industrial Estate,
Off. Chincholi Bunder Link Road,
Malad (W), Mumbai - 400 064.

FACTORY ADDRESS

C/6, Sun Moon Industrial Park,
Kaman Bhiwandi Road, Village Mori,
Taluka Vasai, Dist. Palghar – 401207



(022) 40045077
+91 - 98200 14918



anchrftr@vsnl.net



www.anchorrefractories.co.in