



About us

Since our inception in 1996, We, DYNAMIC ENTERPRISES INC, are a trusted name acknowledged as the eminent manufacturer, wholesaler, retailer and service provider of a wide range of compressed air / gas, filters, pneumatic accessories filters, valves and other industrial process equipment. Our comprehensive and high quality-driven product range includes industrial filter, valves and other industrial process equipment renowned for their unmatched performance and high durability. Our extensive product range comprising a wide variety of air filters, steam filter, oxygen and nitrogen filters, LPG filters, hydraulic filter, pneumatic

FRL, Solenoid valves, pneumatic cylinder, fittings, pilot valves, fabricated air receivers, hydraulic valves, air compressor, air dryers and automatic condensate drain valves find huge industrial application. Across our manufacturing facility with latest infrastructure addition is equipped with all the sophisticated and modern machineries that work on the latest technology to ensure very high quality and increased rate of inventory and dispatching.



In our pursuit to bring forth excellent quality products, we focus on parameter. stringent quality management program to ensure that our manufacturing process follows the stipulated quality Since our inception in 1996, we have managed to build up an unmatched reputation in the market for our high quality industrial filters, valves and other process equipment.



DYNAMIC

Moisture Separator

Moisture Separator



Our moisture separators manufactured using premium quality raw materials are highly ranked in the competitive market in terms of durability, efficiency and withstanding even the harshest surroundings. We offer this high quality product in different specifications to meet the variegated requirements of our esteemed clients. Available in a size range of ¼ inch to 5inch, our moisture separators are regarded very high in the competitive market due to their unmatched feature to knock out 99.5% liquid from compressed air/gas systems.

Our range of moisture separators are segmented into three groups, centrifugal moisture separators, industrial moisture separators & Aluminium Cast moisture separator.

Based on the impingement principle, our exclusive range of centrifugal moisture separators is ideally used to separate large quantities of oil and moisture droplets from the compressed air. The effective drainage system provided along with these centrifugal moisture separators ensures the easy removal of the separated oil and moisture from the collection sump. Ideally placed after the after cooler in between pipe lines and at the outlet of the compressor at the coolest place on the pipe line, this product of ours is available in a wide range of ½ inch to 12 inch line size at an operating pressure of 16 kg/cm². Moreover, we can also custom design these filters as per client-specific needs and requirements. Different types of moisture separators manufactured by us are as follows:

- Baffle Type
- Demister Pad Type
- Centrifugal Type
- Centrifugal cum Demister Pad Type

Centrifugal Moisture Separators



Industrial Moisture Separators



Note - Please see technical data of prefilter for reference of aluminium cast moisture separator.



DYNAMIC

Compressed Air/Gas filters (High Efficiency)

Aluminium Cast Dy



Mini Series - Polycarbonate bowl



SS Compressed Air/Gas Filter



SS Filter



Use of compressed air as a source of energy is increasing day by day due to safety and ease of use. At the same time, it is becoming imperative that the compressed air is clean and oil and odor free. Our professionals design the compressed air filters for high quality filtration of compressed air or gas in various applications. We offer technologically advanced air filters which are acknowledged for their high performance, greater efficiency, ease of use, flexibility, and safety. These filters are approved by ARAI, EIL.

We are one of the prominent manufacturers of comprehensive range of Industrial SS Filter that is widely used in processing and manufacturing industries for filtration and separation of solutions. Our products have proven effective across the market for the process of water clarification to fine ink pigment classification, or removal of contaminating solids from natural gas. These are available in different sizes & designed, and can be customized as per the specifications detail by the clients.

To remove the dust, moisture in liquid & aerosols form as well as oil particles from compressed air/gas down to 0.01 micron including water & oil aerosole, providing a max. Remaining oil aerosole content 0.01 mg/m^3 @ 30°C at the Efficiency-of 99.9999% with imported microglass fibre filtration media.

There are following grades

- Inline filter (Perfilter) of sintered bronze filter element (IF)
- Coalescing filter (MGF) of microglass fibre element
- Activated carbon filter (CF)

Available in various sizes & flow capacities & pressure ratings.

Performance Feature :

- Compressed Air quality to ISO 8573 : 1 at optimum cost
- Remove 100 % of liquids, dirt
- Continuously traps & drain liquid i.e. housing are designed for effective separation / filtration & low pressure drop
- High filtration efficiency thus consistent air quality i.e. element has high contamination retention capacity & low pressure drop resulting in energy savings
- Remove trace oil vapour with carbon adsorbent cartiges
- Service flow range from a few SCFM to 4000 SCFM

**DYNAMIC**

Compressed Air/ Gas filters (High Efficiency)

Built To Keep

- Constructed as simple rugged self - sealing filter cartridges that are much less expensive than complicated filters of comparable efficiency
- Are long -lived, even in dirty air or gas systems
- Completely resistant to water compressor oils & virtually even other liquid or gas
- Operated at temperature from - 15° F 300°
- Max. op. pressure 20 bar
- Max. po temp. 55° C

Filtration Grade :

Grade	Material of Construction		Micron rating	Efficiency	Residual Oil PPM	Initial p bar
	Cartidge	Housing				
IF (PreFilter)	Sintered Bronze	Carbon steel, Alluminium / s.s.	25 or 5	100 %	N.A.	0.040 OR 0.060
MGF (Coalescing filter)	Microglass fiber with filter fabric	Carbon steel Alluminium / s.s.	0.1 OR 0.01	99.99%	1	0.11
CF (Oil vapour adsorbing filter)	Activated Carbon	Carbon steel Alluminium / s.s.		99.99%	0.01	0.055

Note- Oil carry is for every 50 ppm at inlet to filter, standarder supplies aluminium cast housing up to $\frac{1}{8}$ " & $\frac{1}{2}$ ".

Specification at 7 bar op. pressure & 35°C inlet temp. :

Filter Model	Connection Size	Capacity (Flow)	Element Code
IF- 1/4, MGF- 1/4, CF- 1/4	1/4" BSP	20 To 30 SCFM	$\frac{1}{2}$ x 60
IF- 1/2A, MGF- 1/2A, CF- 1/2A	$\frac{1}{2}$ " BSP	30 To 50 SCFM	$\frac{1}{2}$ x 100
IF- 1/2, MGF- 1/2, CF- $\frac{1}{2}$	$\frac{1}{2}$ " BSP	50 To 80 SCFM	$\frac{1}{2}$ x 120
IF- 3/4, MGF- 3/4, CF- 3/4	3/4" BSP	80 To 110 SCFM	$\frac{1}{2}$ x 120
IF- 1A, MGF- 1- CF- 1-A	1" BSP	110 To 130 SCFM	1 x 130
IF- 1, MGF- 1-A CF- 1	1" BSP	130 To 160 SCFM	1 x 140
IF- 1 1/2A, MGF- 1 1/2A, CF- 1 1/2A	1 1/4" BSP	160 To 250 SCFM	1 x 160
IF- 2, MGF- 2, CF- 2	2" BSP	280 To 550 SCFM	1 x 180

Conversion Table :

Working Pressure PSI/Bar	14.1	29/2	43/3	58/4	72/5	86/6	100/7	114/8	128/9	142/10
Conversion Factor	0.25	0.36	0.5	0.6	0.75	0.9	1	1.1	1.2	1.4

Selection :

Determine operating temp. / pressure (Max.- Min.) & flow rate where filter to be installed. Select filter with rated flow capacity on basis of maximum flow at minimum, operating pressure. Rated flow from specification should be multiplied by conversion factor from conversion table corresponding to minimum pressure to match desired flow rate also select housing connection size that matches pipe size is smaller than piping, flow will be restricted causing increased pressure drop.

Note :

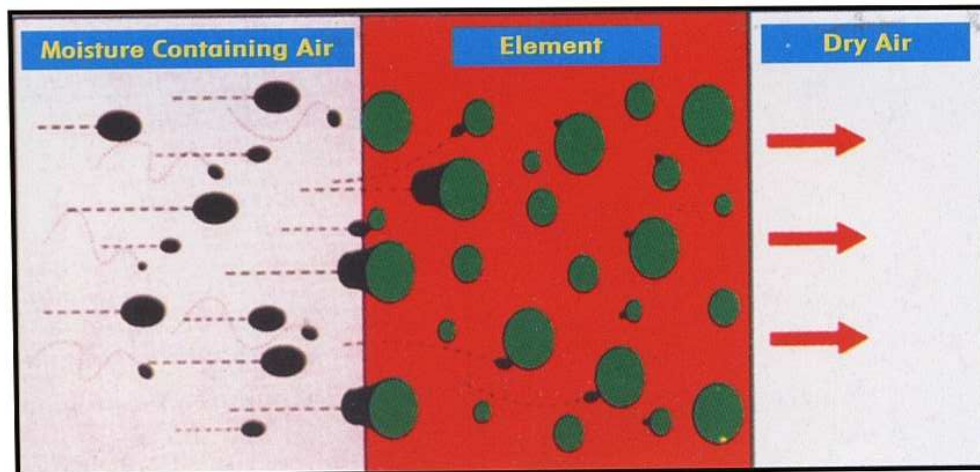
- For Maximum removal efficiency instal filter at coolest point in system.
- Change element before differential pressure reaches 0.7 bar(g) Grade IF can be cleaned & reused. Other grade require replacement according to operating conditions.
- Optional Accessories - Differential pressure gauge Automatic condensate drain valve flanges.
- Filter for high pressure, flow rate, please contact us or our nearest dealer.



DYNAMIC

Compressed Air/Gas filters (High Efficiency)

Graphical illustration of coalescing principle :



Mini air dryer



Mini air dryer consist of pre filter, carbon filter, alumina adsorbed and after filter pre connected and supplied as a single unit.

Compressed air at the outlet of mini air dryer will be almost dry and this unit is very ideally suitable for connecting at the point of application.

Mini air dryer is available in many different sizes up to 300 CFM flow capacity and 40 bar working pressure. for details flow and pressure rating please refer our compressed air / gas filter section.

The wide array of replacement cartridges we offer are provided with imported glass fiber filtration media for ultra filter, zander, donnik hunter and for various others. Developed using premium quality raw material as per the latest industrial standards, these replacement cartridges ensure precise weight and hardness, high durability, and dimensional accuracy. We also custom-design our product range in order to suit the varied needs and requirements of our clients.

Replacement Cartridges





DYNAMIC

Filters

Oxygen / Nitrogen gas Filter



Use of Oxygen / Nitrogen/ gas Filter as a source of energy is increasing day by day due to safety and ease of use. At the same time, it is becoming imperative that the Oxygen / Nitrogen/ LPG gas Filter is clean and oil and odor free. We offer a wide range of filters for this application. It removes Dust, Dirt, condensate, Particles down to 0.01 Micron with efficiency of 99.99%.

Avail from us an exclusive range of steam filters that are designed using the advanced technology. These filters are used for removing moisture, dust and oil particles. Our steam filters can kill bacteria upto 0.01 micron steam line. Having stainless steel housing, these filters are known for their sturdy construction, corrosion resistance and better durability standards. Available in various sizes, these steam filters and nitrogen filters can also be customized to suit the varied application requirements of the clients.

Specifications :

- Temperature up to 250° C
- Pressure 10 bar at various flows
- APPROVED BY ARAI, EIL

Steam Filters



LPG Filters



LPG filters we offer are easy to install, extremely durable, and offer high corrosion resistance. These are highly suited to varied customer requirements and are renowned for their distinguished features that are as follows:

Salient Features:

- Phenomenal filtration area of over 1000 times
- 5 Micron fine filtration (nominal)

Design Features:

- Design in accordance with ASME Sec VIII Div 1
- All welders qualified to ASME Section IX
- Designed for ASME Class 300 pressure service
- Drain and vent valves as standard

Specifications:

- Gross Filtration Area 1000 times
- Pressure drop clean (Max) 0.5 bar.



DYNAMIC

Filters

Bucket Strainer



Bucket strainers are mainly installed in horizontal piping. Since the bucket strainer elements housed in the bodies can be taken out from the tops, the debris caught by the elements can be taken outside easily. The design of bucket strainers can be arranged to suit larger piping.

Carbon Steel and Stainless Steel - Threaded, Flanged and Socket Welded, Y-Strainers are typically used in applications where the amount of solids to be removed is small, and where frequent clean-out is not required. They are most often installed in gaseous services such as steam, air, nitrogen, natural gas, etc. The compact, cylindrical shape of the Y-strainer is very strong and can readily accommodate the high pressures that are common in this type of service. Pressures up to 6000 psi are not unusual. When steam is being handled, high temperature can be an additional complicating factor. A steam pressure of 1500 psi will often be found at temperatures of 1000°F. A Y-strainer has the advantage of being able to be installed in either a horizontal or vertical position. However, in both cases, the screening element or "leg" must be on the "downside" of the strainer body so the entrapped solids can be properly collected and held for disposal. Y Strainers are furnished with high quality stainless steel screens that are carefully fabricated to fit the strainer body perfectly. This, coupled with the precision machined screen seat on the body of the strainer, protects against any bypass.

Y Strainer



Features

- Heavy Duty Construction
- Compact design
- Bolted or threaded covers
- Standard stainless steel screens
- Suitable for liquid, gas or steam
- Synthetic fiber gaskets

APPLICATION

Options

Monel screens

Perforated stainless steel screens – 1/32" to 1/2" 20, 40, 60, 80, 100, 150, 200, 325 and 400 mesh stainless steel screens Y strainers are engineered to withstand the most aggressive industrial and commercial, steam and gas applications. Available in carbon steel or stainless steel for pipeline sizes from 1/4" to 10", with threaded, flanged, or socket weld connections.

Markets served include:

Chemical processing

Petroleum

Power generation

Marine

Water

Oil & Gas

Offshore

Iron & Steel

Automotive

HVAC

Pulp & Paper

Food & Beverage

Pharmaceutical



DYNAMIC

Hydraulic Filters, Accessories Fitting & Hoses

Hydraulic Filters



Our qualitative range of hydraulic filters is manufactured using premium grade materials, which provide them high performance and long lasting features. This superior quality product of ours holds an edge in the competitive market and is preferred in the industry for due to its very high abrasive resistance. Further, we can also custom design these filters as per the clients' specifications and demands.

The varied product range we provide under this segment includes:

- High pressure inline filters 250 bar & 450 bar
- Suction housing filters
- Elements
- Duplex filters
- Suction strainers
- Return line filters

Hydraulic Hoses & Accessories



Our qualitative range of hydraulic hoses and accessories are specially designed for smooth passage of hydraulic fluid to or among hydraulic components, actuators, valves, and tools. This product range is manufactured using the latest technology and the best grade raw materials to optimum level and is known for their distinguished features of accurate dimensions, corrosion resistance and leakage proof. Available in different specifications to meet the diverse application requirements of the clients, these find wide usage in various industries.



Automatic condensate Drain valve

Automatic Condensate Drain Valves (Timer Operated)



Our wide gamut of **Automatic Condensate Drain Valves** is highly appreciated in the market for its ability to effectively remove the condensate from pneumatic systems such as dryers, after coolers, filters, moisture separators, air receivers, and others. Our automatic valves ranging from 50 LPH to 500 LPH are provided with adjustable on-time duration & fixed drain time and are suitable for different voltages. Designed with precision according to the international quality standard, these can easily withstand dirty and harsh working conditions and give optimum performance.

The different size ranges in which our product is available are as follows:

Sizes: 1/4" BSP, 1/2" BSP,
3/4" BSP, 1" BSP

Salient Feature:

- Reliable Electronic Timer Controller For Absolute Control
- Completely Sealed & Waterproof - IP 65 Moulded Cover
- Easy Installation
- Fitted With Test Push
- Max. Concentrate Discharge 45 LIT / HR For 1/2" Size
- Eliminates The Liquid Carry Over In Compressed Air Line

The Moisture In Compressed Air:

The Moisture in Compressed air line cause low productivity, inefficiency in pneumatic equipments and causes corrosion and breakdowns and create more maintenance. The accumulation of moisture is huge within is huge within few minutes. To avoid this, DYNAMIC has developed AUTOMATIC CONDENSATE DRAIN VALVE. Solenoid valve is operated by highly reliable electronic timer and it has high discharge.

Where to be used?

The ACDV is used for automatic draining of condensate from compressed air systems like air receivers, after coolers, air dryers, air filters, moisture separators, drop legs etc

Specifications

Valve Opening	5 Sec
Cycle Time	10Min to 180min. Adjustable
Working Pressure	Max 10 Kg / cm ² , for LP model [High Pressure-25 kg/m ²]
Max. Ambient Temp	70 deg C
Max Fluid Temp	55 deg. C
Valve Connection	1/4 BSP, 1/2 BSP, 3/4 BSP, 1" BSP
Supply Voltage	230 V AC / 1 Ph / 50 Hz, Other or request
Power Consumption	7 Watts
Weight	0.5 Kg appx.
Office	6, 12, 20mm, 25mm
Models	ACDV- Y2- LP, ACDV-Y2-HP, ACDV-1-LP, ACDV-1-HP

NOTE:- FOR OTHER SPECIFICATIONS, IF REQUIRED PLEASE CONTACT US.

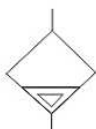


Automatic condensate Drain Valve

Auto drain valves (Float Type)



HAD	402	02
Series	Type	Pipe Size
	402	02:G1/4
		03:G3/8
		04:G1/2



The special design of the *Eliminator* had series can eliminate the liquid water and oil collect in the lower chamber of air compressor. A float-based automatic drain valve automatically drains fluid from a compressed air cylinder; the cylinder includes a chamber with an inlet and an outlet. The inlet is formed at the top of the chamber and connects to a low point of the compressed air cylinder to receive fluid there from. The outlet is formed at the bottom of the chamber for discharging the fluid. A buoyant stopper disposed within, and not attached to, the chamber, seals the outlet when insufficient fluid is present within the chamber to float the buoyant stopper. Further, the buoyant stopper unseals the outlet and discharges the fluid when buoyancy of the stopper within the fluid overcomes forces seating the buoyant stopper at the outlet.

Feature of HAD :

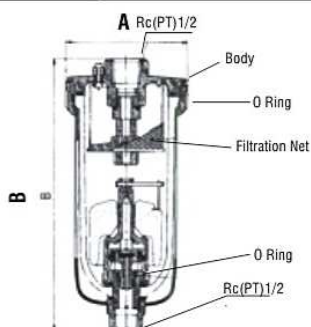
- Float type hence no electrical signal required.
- Can be installed in any position which is not convenient for manual chain.

Function :

- The automatic line chain is a float type when the condensate level increase, the float moves up & drain the condensate automatically.

Specification	HAD402-02	HAD402-03	HAD402-04
Proof Pressure	1.5MP _a		
Applicable Pressure	0.15-1.0MP _a		
Applicable Temperature	0-60°		
Outfall Size	G1/8	G1/4	G3/8
Operating Medium	Coprassed Air		

■ Figure Dimension



■ Precautions

- Note the direction of the flow before installation and connect pipe accordingly
- Flush piping for dirt, rust and other foreign material.
- Install in clean atmosphere.
- Clean brass filter by blowing compressed air
- Use correct grade of oil.

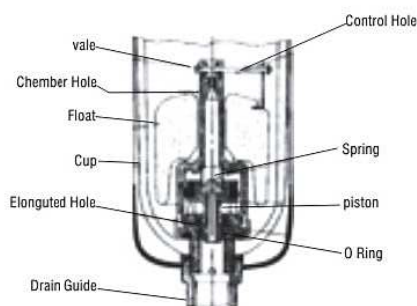
Precautions

Pull the the knob and adjust by turning the knob clockwise to increase the pressure. Push the knob back to it's lock position.

ZDFS Auto Drain Valve:

It is installed in the bottom of auto drain, air filter and filter regulator, it can can atutomatically eliminate condensate collect in lower chamber

Notice: Installed vertically and outfall downward



Type	HAD402-02	HAD402-03	HAD402-04
A	φ82	φ82	φ82
B	182	182	182



Air Compressor, Dryers & Air Receivers

Air Compressors



We manufacture and supply an exemplary collection of air compressors that are used to compress atmospheric air. Our entire range of air compressors, dryers, and aftercoolers are fabricated using the superior grade material and are appreciated for their corrosion resistance, high durability and efficient performance. Our range of air compressors available in ranges of 2 Hp to 15 Hp, with or without electrical and with all accessories like motor, spares for IR/ELGI/KHOSALA comes with excellent after sales services. We offer extreme quality air dryers that find usage in removing oil, moisture, and dust from atmosphere. These products of ours are available in a wide range from 10 sCFM to 50 sCFM with a dew point of 40°C and offer 100% pure air.

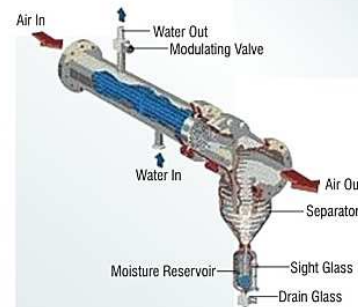
Some of these dryers available with us are as follows:

- Heatless type
- With prefilter
- Coalescing filter
- Final filter
- Skid mounted

It is a heat exchanger designed & manufactured to reduce / cool the compressed air temperature to desired level, so the condensation takes place & vaporized moisture & oil in air gets converted in liquid droplets which further separated by moisture separator. The after cooler substantially reduces the moisture & oil load coming on down stream at the initial stage. The cooling media can be water or air.

Types	Shell and tube (Vertical / Horizontal) with and without moisture separator.
Location	At the outlet of Compressor.
Range	Upto 5000 CFM at 10 Kg/cm ² operating pressure.
MOC	Shell – As per IS 1239 / IS 2062. Tube – As per BS 2871 part III C – 105, TEMA std.

After cooler



Heatless Air Drying Unit



A high quality range of heatless air drying units manufactured by us find wide usage in numerous industries across India. Ideally used to make the air absolutely free of heat and exhaust emitted from machines and other equipment in the work area, these heatless air drying units also make the air moisture free.

Our range of filters highly known for its high durability, corrosion resistance, and efficient working can also be custom designed by our team of competent quality professionals as per the specific requirements of our esteemed clients. The different components used in the wide range of heatless air drying units offered by us are as follows:

- Oil removing filters
- After filters
- Pre-filters
- Fittings timers



Air Compressor, Air Dryers & Air Receivers

The refrigerated compressed air dryers manufactured by us are ideally suited to make compressed air moisture free. These refrigerated air drying units renowned for their superior quality and high performance are a preferred choice in various industries across India. In our objective to ensure superior quality products, we ensure that these refrigerated air drying units are thoroughly checked on various stringent quality parameters as per international quality standard.

Refrigerated Air Drying Unit



Some of the salient features of the refrigerated air drying units we offer include:

- The use of stainless steel-brazed plate heat exchangers that are helium tested to ensure no leakage
- Highly efficient in maintaining a constant dew point
- Fitted with large condensers for ambient temperatures
- Having 45 sales and service outlets across India, we have a wide network ensuring easy availability and ease in after sales support.

Air Receivers



A wide range of air compressors to our clients that we offer are extensively used to dampen the fluctuations in compressed air. These air receivers are fabricated from optimum quality raw material and known for their precision engineering, durability, and application specific design. Our high quality air receivers available in capacities ranging from 50 lt to 1000 lt conform to IS-2825 standards. Moreover, we can custom-design these air receivers according to the specifications of the clients.

Some of the unique features of these pressure vessels and compressed air receivers are as follows:

- Effective working that enhances the working life of compressors
- Corrosion resistant
- Highly durable

Purpose :

- Stores the pressurized compressed air.
- Cools the compressed air.
- Helps to maintain constant pressure at downstream.
- Helps to separate oil & moisture from compressed air.

Types	Vertical and Horizontal.
Location	After Compressor & After cooler.
Range	Upto 10 M ³ at 7 Kg/cm ² operating pressure.
MOC	As per national & international standards of pressure vessel code.



DYNAMIC

Pressure / Temperature Gauges

Pressure Gauges



This product of ours offered in the range of 1 kg/cm² to 2000 kg/cm² is one of our most popular products in the market. Our product widely acknowledged for high precision accuracy finds main usage in power plant, food industry, refineries and other industrial process applications.

Nominal Size (mm)	63, 80, 100, 150, 250
Scale Range	0.. Vacuum to 700 kg/cm ² & above on request
Accuracy in FSD	1%
Thread Connection	3/8", 1/2", BSP & NPT, M-20 and Flanged connection
Mounting of Gauge	Bottom, Surface
Case and Bezel	SS 304
Pressure Elements	Bourdon Tube
Diaphragm	YES
Wetted Parts	Ss316, SS316L, Teflon, Monel, Hastalloy & other on request
Application	Chemical and Petrochemical, Plastic and paper, Pharmaceutical, Water treatment.
Optional	Electric Contact, Back Mounting & Liquid Filled

Diaphragm Sealed Gauges



Temperature gauges



We also offer the following types of the Temperature Gauges.

Bi-Metallic Temperature Gauges (ABT)

Filled System Temperature Gauges (AFT)

Nominal Size (mm)	100, 150
Scale Range	0..to 250..to..6000mmwc
Accuracy (FSD)	2%
Thread Connection	3/8", 1/2", BSP & NPT M-20
Mounting of Gauge	Direct Bottom
Case and Bezel	Drawn steel, SS 304
Pressure Elements	Capsule
Diaphragm	Nil
Wetted Parts	Brass, SS 304 & SS 316
Application	Chemical and Petrochemical, Water treatment

Capsule Pressure Gauges



Diaphragm Gauges



Nominal Size (mm)	100, 150
Scale Range	0..to 6000 mmWC Low Pressure & 0..to 0.6 to 25 kg/cm ² High Pressure
Accuracy in FSD	1.6%
Thread Connection	3/8", 1/2", BSP & NPT, M-20 and Flanged connection
Mounting of Gauge	Direct Bottom
Case and Bezel	Drawn steel, SS 304
Pressure Elements	Schaffer's Diaphragm
Diaphragm	YES
Wetted Parts	Spring Steel Teflon Coated, SS 304, SS 316 and other material on request
Application	Chemical & Petrochemical, Food & Beverage Industry, Mechanical Engineering Plant & Apparatus Construction
Optional	Teflon lining, Electric Contact and Liquid Filled



DYNAMIC

Pressure / Temperature Gauges

Special Purpose Gauges



Nominal Size (mm)	80,100
Scale Range	-1 to 0 bar (50% span) 0 to 25 (50% span)
Accuracy(FSD)	1.6%
Thread Connection	1/4", 3/8", 1/2", BSP & NPT
Mounting of Gauge	Bottom, Back
Case and Bezel	Drawn steel, SS 304
Pressure Elements	Diaphragm
Diaphragm	Yes
Wetted Parts	SS 304 and SS 316
Application	Fire Fighting Pumps, Plant Construction

We provide all different types of gauges. This gauge provides a battery-powered, local display of pressure that is 6 times more accurate than its mechanical counter-part, with 3 times the over-range capacity and 5 to 10 times the resolution of traditional mechanical pressure indicators! The switch version provides all this, PLUS 2 fully adjustable switches with low-voltage relay outputs for simple control and/or alarming.

Pressure cum Temperature Gauges



Bourdon Pressure Gauges



Nominal Size (mm)	40,50,63,80,100,150,250
Scale Range	0.. Vacuum to 700 kg/cm ² & above on request
Accuracy in FSD	2%
Thread Connection	1/8", 1/4", 3/8", 1/2" BSP & NPT, M-10, M-12, M-20
Mounting of Gauge	Bottom, Surface, Back, Panel with 3 holes, Panel with bracket
Case and Bezel	Drawn steel, SS 304
Pressure Elements	Bourdon Tube
Diaphragm	Nil
Wetted Parts	Brass, SS 304
Application	Pneumatic control system, Air conditioning

Nominal Size (mm)	100, 150
Scale Range	0..to..1000 kg/cm ²
Accuracy (FSD)	1.6%
Thread Connection	1/4, 3/8", 1/2", BSP & NPT and M-20
Mounting of Gauge	Bottom, Surface
Case and Bezel	Drawn steel, SS 304
Pressure Elements	Bourdon Tube
Diaphragm	Nil
Wetted Parts	SS 304 & SS 316
Application	Gaseous & Liquid Media
Static Pressure	Same as scale range

Differential Pressure Gauges





DYNAMIC

Pressure/ Temp Switches, Thermostats

Pressure Switch - Type Ps / Psu



We offer a wide range of pressure, temperature & thermostat switches that are used for compressor loading and unloading. Available in different specifications, these pressure, temperature & thermostat switches are suitable for refrigeration, air conditioning and controlling of various industrial instruments. Developed using quality raw material, our range is known for efficient performance, corrosion resistance and better durability standards.

Indfos pressure switch type PS/PSU is a triple pole device, meant to regulate pressure in small air compressors and water pressurization plants. These switches cut off a 3-phase power supply when the pressure rises to a preset value and cuts in the power supply when the pressure falls to another predetermined value. Both cut off and cut in pressures are independently adjustable. All models are provided with a manual cut off switch (except PSU15X). Type PSU switch is additionally provided with a relief valve, which ensures load free starting of the compressor.

Type PS/PSU pressure switches find applications in :

- Small air compressors
- Domestic Water Pressurisation System

Industrial pressure switch ips, is an electromechanical device that senses changes in pressure and provides electrical contact closure at predetermined values. Ips pressure switch may be used to energize an alarm or may directly control the process by cycling pumps, shifting valves etc. ips is the most economic device in our wide range of pressure switches. The construction is simple, yet sturdy. The mechanism is enclosed in a dust proof mild steel casing and all parts are rust proofed for long life. Range and differential values can be set independently and the device has clearly read out setting scale.

Pressure Switch - Type Ips



Pressure Switch - Type Rt



RT series pressure switch is produced using technology provided by danfoss denmark. These switches are sturdy, robust and reliable devices meant for industrial applications. Over one million units have been used in a variety of applications. rt series pressure switches utilize a seamless bellows as sensing element. The bellows can be either phosphor bronze or stainless steel to suit various kinds of process medium.



DYNAMIC

Pressure/ Temp Switches, Thermostats

Pressure Switch - Type B



We offer the most advanced and versatile series switches to solve your differential pressure application. Vacuum Switches are designed for high proof pressure to handle pressure from vacuum to 210 Kg/Cm². B-Series Switches use a diaphragm sealed piston actuator. As the pressure on the calibrated piston increase the adjusted spring force is over-come and the snap action switch is actuated. The piston is sealed from the proceed by a diaphragm. Choice of diaphragm materials offers compatibility with virtually any medium.

Indfos D Series Differential Pressure Switches are produced using technology provided by Dresser Industries USA (ASHCROFT Division). These are sturdy, robust and precise devices for use in process industries. Available in various ranges covering differential pressures from 25 mm to 42 kg/cm² ranges, these switches utilize a dual diaphragm sealed piston sensor which is capable of withstanding extremely high static pressures and at the same time provides set point repeatability of $\pm 1\%$. Diaphragms are available in Buna-N, Viton, Teflon, Kapton, Stainless steel & Monel construction making the switch suitable for virtually any process fluid. different requirements of electrical ratings and environmental conditions.

D Series switches find applications in :

- Off Shore Oil Rigs
- Chemical & Petrochemical Plants
- Power Plants
- Pulp & Paper Mills
- Water & Sewage Treatment Plants
- Nuclear Power Plants

Differential Pressure Switches Type D





DYNAMIC

Manual Valves



Our clients can avail from us a vast range of Mechanical Valves that is appreciated by our clients for its robust design, corrosion resistance, durability and high performance. These valves have been precision engineered by our professionals using quality tested raw material.

BALL VALVES

We provide a wide array of ball valves, needle valves and globe valves available in various sizes ranging from 1/4 inch to 2 inch BSP. Manufactured using cutting edge technology and imported from WOG-Sanisa-Italy Audco, these valves offer high corrosion resistance, optimum performance, and long service life. These valves are available in brass forged, S.S. body, screwed ends and flanged ends.

Ball Valves



Ball valves are quarter - turn, straight through flow valves that have a round closure element with matching rounded seats that permit uniform sealing stress. Ball valves are used in situations where tight shut - off is required. The type of seat can vary with the valve pressure rating and material of construction. Some valve seats are composed of single molded forms, while other seats with higher - pressure rating often incorporate a trunnion design where each face of the ball is separately sealed. They are wide duty valves, able to transfer gases, liquids and liquids with suspended solids (slurries).

Ball Valves, Needle Valves, Globe Valves



High Pressure ball Valves

We are the manufacturers of a wide range of high pressure and high temperature ball valves. These valves are specially developed to meet the industry requirement of a safe and reliable shut off valve applications. Our range of ball valves are designed for superior emissions control, and have documented high performance level without stem leakage.





DYNAMIC

Manual Valves

Forged Ball Valves



Ball Valves are manufactured in accordance with and can be used for : domestic and commercial plumbing, industrial requirements and heating, sanitary, pneumatic systems, waterworks, hot water services, condensate lines and is suitable with every non-aggressive fluid

We offer wide range of Heavy

Duty pneumatic Cylinder

single & Double acting

Design	1PC/ 2PC/ 3PC
Ends	Screwed / socket weld/ Flanged
Size	6MM to 100 MM
Design Std	BS 5351/ API 6D
Test Std	BS 6755 /API 6D

Gate Valves



In order to provide a suitable solution to various industrial applications, we have introduced an impeccable range of gate valves. These gate valves match the international standard in terms of quality and performance. Moreover, the materials used in the manufacturing of the entire gamut of gate valves are of premium quality that ensures high durability and resistivity to various unfavorable conditions.

We are engaged in manufacturing superior globe valves which are offered in various patterns like straight patterns, oblique patterns, angle patterns and needle designs. It comes with large variety of internal seat construction variants. These globe valves are useful for flow control or on/off isolation of fluids and these are manufactured from the superior quality of the raw material. Advanced machinery is used in the production of globe valves which consists of cutting machine, drilling machine.

It has following features:

- Resistance to corrosion
- Tested under rigid conditions
- Cost effective

Investment Casting Ball Valves



Globe Valves





DYNAMIC

Manual Valves

High Pressure Needle Valves



On offer from us is a precision engineered range of High Pressure Needle Valves. These are fabricated in Bar stock Body construction with optional panel mounting and non-rotating ball tip optional and straight or angled pattern. These are highly durable, dimensionally accurate, corrosion resistant and offer long service life. We fabricate these as per the set industry norms and use only the top grade raw material.

Butterfly Valves



We source and supply a quality range of Butterfly Valves that is designed to stop or slow air or product flow by means of a turning disk. Butterfly valves are a specially designed seal that encircles the disk creating a tight seal when the disk is in the closed position. These butterfly valves can be used in gravity flow or pneumatic systems.

Diaphragm Valves



We manufacture a wide range of Diaphragm Valves which are known for its isolation characteristics and excellent sealing. These valves are used for controlling fluids and help in preventing the migration of the fluids out of the valves or other valve mechanisms. Our range of diaphragm valves makes use of a valve shoulder and a resilient diaphragm which engages a valve seat and helps to prevent the fluid to flow from the valve seat.

Pressure Reducing Valves



The company deals in a wide range of Pressure Reducing Valves available in the market. Our Pressure Reducing Valves like Pressure Reducing Valves, Water Pressure Reducing Valves, and Pressure Relief Valve etc. are widely used in various industries and that too for a wide number of purposes. Our Pressure Reducing Valves are made accessible in different ranges and specification as required the esteemed clients. They are made of finest quality raw materials giving them durability and strength.



DYNAMIC

Manual Valves

Disc Check Valves



Size range	½ to 8 inches
Body	CF8/ CF8M
Disc	SS 304/ SS 316
Pressure	Metal to Metal, Soft seated
Disc Seat	Standard
Max. oper. press	Upto 42 Bar
Max. Oper. Temp	Upto 300 C
Testing	As per API 598

Safety Manual Valves



Owing to the finest quality of raw material used in their construction, our safety valves following opening, acquires the degree of lift necessary for optimum discharge rate within a pressure rise of not more than 10%, thus protecting the equipment from dangerous high pressure.

Manufactured in compliance with industry norms and standards, these valves efficiently meet the various industrial application requirements.



DYNAMIC

Actuator & Control Valves

Pneumatic rotary actuator



Actuator	Single / Double acting
Type	Double rack and pinion
Mounting	Namur
Rotational angle	90 & 180
Body	Extruded aluminium Pipe
Seals	Nitrile / Buna N
Pressure	15 to 150 PSI
Temperature	-20 to 90
Torque	Upto 4500Nm at 5 kg/cm

Actuator	Single / Double acting
Size Range	1/2 to 12 inches
Ball Valves	3 piece design
MOC	CF8/CF8M/CF3M/CS/CI/PP
Ends	Screwed / flanged socket weld/ tricolver

3 piece ball valves with Pneumatic Rotary actuator



3-4 way ball valves with Pneumatic Rotary actuator



Actuator	Single / Double acting
Size Range	1/2 to 8 inches (Full reduce Bore)
Ball Valves	3-4 way L/T/X Port
MOC	CF8/CF8M/ WCB
Ends	Screwed / flanged socket weld/ tricolver

Butterfly Valves with Pneumatic Rotary actuator



Actuator	Single / Double acting
Size Range	1.1/2 to 24 inches (Full reduce Bore)
Butterfly Valves	Cast Iron/CB8/CB8M
Disc	CI/CF8/CF8M
Seals	Nitrile / EPDM
Pressure rating	PN 10 & PN16 avail on requirement
Pressure	15 to 150 PSI
Temperature	-25 C to 130 C



DYNAMIC

Actuator & Control Valves

Pneumatic Actuators



HAM-LET 90° PNEUMATIC ACTUATORS RANGE

The most compact actuator for ball valves up to 1" body size. Superior torque-to-size ratio for instrumentation applications. A unique internal and external double coating improves corrosion resistance and ensures smooth operation. A simple interface plate accommodates all air connection types.

Type	Normally close open
Size Range	1/2 to 3 Inches
Body	CF8/ CF8M
Pneu. Press	3.5 to 7 bar
Working Press	Upto 16 bar
Working temp	220 C
Ends	Screwed / flanged / triclover
Media	Air , water, oil ,gas & steam

3/2 way Pneumatic cylinder operated control Valves



2/2 & 3/2 way Pneumatic Diaphragm operated control Valves



Actuator	Spring Return Type, heavy duty Pneumatic diaphragm
Type	Normally close / open
Size Range	1/2 to 12 Inches
Body	WCB
Diaphragm cover	MS (Sheet metal)
Working Press	150#/300#/600#
Working temp	200 C
Seating	Metal to Metal
Media	Air , water, oil ,gas, steam & hydraulic oil

Actuator	Spring Return Type, heavy duty Pneumatic diaphragm
Type	Normally close / open
Size Range	1/2 to 6 Inches
Body	WCB (SS on required)
Diaphragm	Polyurethane
Diaphragm cover	Sheet metal pressing
Press- temp Rating	Glass filled Teflon 220C soft, Teflon seat 155 c , Metal to metal 450 C
Working temp.	Metal to Metal 450 C
Media	Air , water, oil ,gas & steam.

2/2 & 3/2 way Diaphragm type control valves



2/2 way Pneumatic angle type On/Off control Valves



Type	Normally close open
Size Range	1/2 to 4 Inches
Body	CF8/ CF8M /CF3M
Pneu. Press	3.5 to 7 bar
Working Press	Upto 16 bar
Working temp	220 C
Ends	Screwed / flanged / triclover
Media	Air , water, oil ,gas & steam



Pneumatic Accessories

A) Pneumatic Cylinder

Heavy duty Pneumatic cylinders

SDNC Series Cylinder



Features

- Conforms to ISO15552, VDMA/ISO6431 standards
- Aluminum body
- Type 32~100mm
- Working pressure range 0.1-1Mpa

Graphic Sign:



SDNC

50 x 20

S

2S

SDNC Standard
double action type

Bore size x Stroke

Magnetic type
S: With magnet

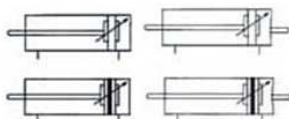
Blank : Normal
2S : Double Ended Type

Bore (mm)	32	40	50	63	80	100
Action	Double acting type					
Application Medium	Filtered Air					
Pressure range	0.1 ~ 1.0 Mpa					
Proof pressure	1.5 Mpa					
Temperature range	-5 ~ 70°C					
Speed range	50 ~ 800 mm/s					
Cushion type	Adjustable cushion/ Air Buffer (standard)					
Cushion stroke (mm)	20		22		32	
Port size	G1 / 8"	G1 / 4"		G3 / 8"		G1 / 2"
stroke	25 to 1500					

Features

- Available in magnetic & Non magnetic type
- Bore: 32~250mm
- Working pressure: 0.1-0.9Mpa

Graphic Sign:



ESC

50 x 50

S

2S

ESC Standard
double action

Bore size x Stroke

Magnetic type
No Mark: Without
Magnet
S: With magnet

Blank : Normal
2S : Double Ended Type

Bore (mm)	32	40	50	63	80	100	125	160	200	250
Action	Double acting type									
Application Medium	Filtered Air									
Pressure range	0.1 ~ 0.9 Mpa									
Proof pressure	1.35 Mpa									
Temperature range	-5 ~ 70°C									
Speed range	50 ~ 800 mm/s									
Cushion type	Adjustable Buffer									
Cushion stroke (mm)	24					32				42
Port size	G1 / 8"	G1 / 4"		G1 / 8"		G1 / 2"		G3 / 4"		G1"
stroke	25 to 1500									

ESC Series Standard Cylinder





DYNAMIC

Pneumatic Accessories

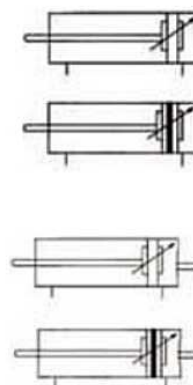
ESU Series Mickey Mouse Cylinder



Feature:

- ESU
- Available in magnetic & Non magnetic type
- Bore: 32~100mm
- Working pressure: 0.1-0.9Mpa

Graphic Sign:



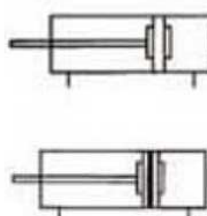
ESU	50 x 50	S	2S
ESU Standard double action	Bore size x Stroke	Magnetic type No Mark: Without Magnet S: With magnet	Blank : Normal 2S : Double Ended Type

Bore (mm)	32	40	50	63	80	100
Action	Double acting type					
Application Medium	Filtered Air					
Pressure range	0.1 ~ 1.0 Mpa					
Proof pressure	1.5 Mpa					
Temperature range	-5 ~ 70°C					
Speed range	50 ~ 800 mm/s					
Cushion type	Adjustable cushion/ Air Buffer (standard)					
Cushion stroke (mm)	24			32		
Port size	G1 / 8	G1 / 4		G3 / 8		G1 / 2
stroke	25 to 1500					

Feature:

- EMAL
- Available in magnetic & Non magnetic type
- Bore: 20~40mm
- Working pressure: 0.1-0.9Mpa

Graphic Sign:



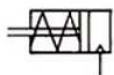
EMAL Series Cylinder



EMAL	20 x 50	S
EMAL Standard double action	Bore size x Stroke	Magnetic type No Mark: Without Magnet S: With magnet

Bore (mm)	20	25	32	40
Action	Double acting type or single acting type			
Application Medium	Air			
Pressure range	0.1 ~ 0.9 Mpa			
Proof pressure	1.35 Mpa			
Temperature range	-5 ~ 70°C			
Speed range	30 ~ 800 mm/s			
Port size	G1 / 8			G1 / 4
Cushion type	Adjustable cushion/ Air Buffer (standard)			
stroke	25 to 500			

● Graphics Sign



● Ordering Code

SPM

Series

10 X 15

Bore size x Stroke

spm Series Cylinder



■ Technical Parameter

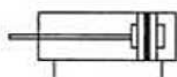
Bore (mm)	6	10	16
Action	Single acting - Spring returning		
Applicable medium	Air		
Pressure range	0~0.9 MPa		
Proof pressure	10.5 MPa		
Lubricating	Not required		
Port size	M5 x 0.8 (Panel installation)		

Note: If lubricating, Please use ISOVG32

SDNU-S Series Cylinder

Bore : Φ 12~25mm

● Graphics Sign



● Ordering Code

SDNU

Series

SDNU: Double acting type

20 X 50

Bore size x Stroke

S

Magnetic type

S: With magnet

■ Features

- Confirms to ISO 6432 standards.
- Elastomer Cushioning at bothends.
- Low friction.
- Long Life.
- No lubrication required.
- More anti corrosive and durable.
- Available in magnetic type.

■ Technical Parameter

Cylinder Diameter	12	16	20	25
Fluid/Applicable medium	Filtered Air			
Motion pattern	Double action or single action			
Ensured Pressure Resistance	1.5Mpa			
Max. pressure	1.0Mpa			
Min pressure	0.1Mpa			
Environment and fluid temp	-10~+80°C (Internal Magnetic Install be Tech strap: Type Max: 60°C)			
Piston velocity	Rubber Buffer (Standard)			
Buffering	50~750 mm/s			
Kinetic energy to larence(kgf/cm)	0.4	0.9	2.7	4
Pipe size	M5 x 0.8		M 1/8"	
Stroke	25 to 1000			



Pneumatic Accessories

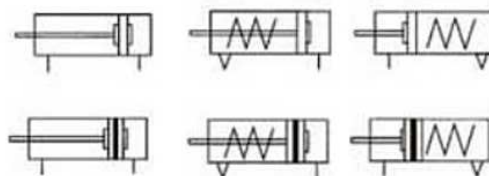
SDA Series Cylinder



Feature:

- SDA
- Available in magnetic & Non magnetic type
- Bore: 16~100mm
- Male type & Female type threading cylinder are available
- Working pressure: 0.1-0.9Mpa

Graphic Sign:



SDA	20 x 30	S	B
SDA Standard double action	Bore size x Stroke	Magnetic type No Mark: Without Magnet S: With magnet	Installing way No Mark: Female thread B: Male thread N: Non thread

Bore (mm)	16	20	25	32	40	50	63	80	100
Action	Extrusion single acting type				Double acting type				
Application Medium	Filtered Air				Filtered Air				
Pressure range	0.2 ~ 0.9 Mpa				0.1 ~ 0.9 Mpa				
Proof pressure	1.35 Mpa				1.35 Mpa				
Temperature range	-5 ~ 70°C				-5 ~ 70°C				
Speed range	30 ~ 500 mm/s				30 ~ 550 mm/s		30 ~ 250mm/s		
Cushion type	Fixed Buffer				Fixed Buffer				
Port size	M5 X 0.8				G1 / 8"		G1 / 4"		G1 / 8"
stroke	60 to 130								

Ordering Code

Features

- Under the circumstance of same driver, only 50% of the standard cylinder installation space is needed.
- Extra buffering ring at terminal place can absorb residual energy of movement at a high speed and machine circuit
- Proximity transducer is flush mounted inside sensor groove, on one hand, there is no need of extra mounting package, on the other hand, it can prevent sensor from mechanical damage

SDVU

SDVU Basic type

A

Cog type
Blank: Internal Thread
A: External Thread

A

Magnet Code
Blank: not attach magnet
A: attach magnet

50

Cylinder Bore
12 ~ 100 mm

P

P: Buffer Type

S2

Plunger Code
Blank: Single end connecting rod
S: 2 both end connecting rod

80

Stroke basic type
φ 12~25 : 1~200mm
φ 32~63 : 1~300mm
φ 80~100 : 1~400mm
single action
φ 12 : 1~10mm
φ 16~100 : 1~25mm

SDVU Series Cylinder



Technical Parameter

Model	12	16	20	25	32	40	50	63	80	100
Motion Pattern	Double action									
Working Medium	Filter compressed air, lubricate of didn't lubricate									
Operating Voltage Range	0.12 ~ 1MPa		0.1 ~ 1MPa	0.08 1MPa				0.06 ~ 1MPa		
Experating pressure Resistance	1.35MPa									
Operating Temperature Range	-20 ~ +80° C									
Operating Speed Range	30 ~ 800 mm-s									
Buffer Type	Double's carrying to have can't adjust type buffer									
Joint Pipe Bore	M5			G 1 / 8						G 1 / 4

Cylinder Mounting and Reed Switch

Cylinder Mounting

● Ordering Code

FA

(Item Type)
FA: Front & Rear Flange Mounting
MS: Male Claves
MD: Female Claves
LB: Leg Bracket
TC: Center Turnion
SG: Rod Fork
FK: Rod Aligner
RE: Rod Eye

ESC

(Cylinder Type)
ESC: For ESC/ESU Series Cylinder
SDNC: For SDNC Series Cylinder
BLANK: For ESC/ESU/SDNC Series Cylinder

32

(Size)
32: 32 Dia
40: 40 Dia
50: 50 Dia
63: 63 Dia
80: 80 Dia
100: 100 Dia
125: 125 Dia
160: 160 Dia
200: 200 Dia

LB



MS



FA



MD



TC



SG



FK



RE

Reed Switch

The reed switch and the clamp assembly is mounted on the air cylinder, for proximity sensing. The piston of the cylinder is equipped with a permanent magnet which activates the reed switch on approaching it. The reed switch closes the circuit giving an electrical signal, which could be used further as required. The accuracy of the sensing distance depends on the speed of the operation of the piston.


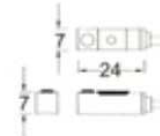


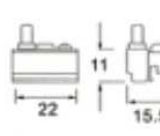
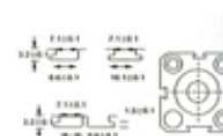

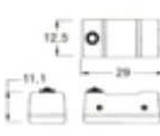


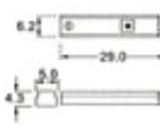
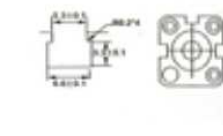
■ Feature



- Two wire type reed switch.
- Solid state switch.
- Red led switch indicator.
- Long life and durable.
- More accurate.


■ Technical Parameter

Type	Suitable for Cylinder	Load Voltage	Load Current	Temperature	Delay Time
ES-21	ESC-S Series	5 ~ 240V AC/DC	100mA	-10 ~ 70°C	On+Off<1ms
ESH Clamp					
ES-03	EMAL-S Series SDNU-S Series				
ESM Clamp					
ES-11	SDA-S Series				
CS-1	SDNC-S Series				

Reed Switch

Model	Product	Contact Type	Working Voltage	Diameter	Joint Pipe Bore
ES-03		Amagnetic reed switch contact	5-240V DC/AC		
		Contactless NPN transistors	5-30V DC		
		Contactless PNP transistors			
ES-11		Amagnetic reed switch contact	5-240V DC/AC		
		Contactless NPN transistors	5-30V DC		
		Contactless PNP transistors			
ES-21		Amagnetic reed switch contact	5-240V DC/AC		
		Contactless NPN transistors	5-30V DC		
		Contactless PNP transistors			
CS-1		Amagnetic reed switch contact	5-240V DC/AC		
		Contactless NPN transistors	5-30V DC		
		Contactless PNP transistors			

Model	Product	Metal strip model	Sketch map
ESM Clamp		BK fixed metal band series	
		PAB fixed metal band	
		PN fixed metal band series	

Model	Product	CLAMP MODEL	Sketch map
ESH Clamp		PI fixed Clamp series	
		PAC fixed Clamp	
		PM fixed Clamp series	



DYNAMIC

Pneumatic Accessories

Pilot Valves

GD Series Pilot Valve



GD

25

1

1A

06

Series

Valve Type
25:2 position / 5 ports

Connection Code
1:1 / 8
2:1 / 4
3:1 / 2

Control form
1A: Single air
operated
2A: Double air
operated

Pipe size
06: G1 / 8
08: G1 / 4
15: G1 / 2

Item Specification	Valve Type	Pipe Size	Nominal Diameter (mm)	Applicable Medium	Applicable Pressure Range	Operating Method	Max Action Frequency	Lubrication	Applicable Temperature
GD2511A-06	2 Positions/ 5 Ports	G1 / 6	6	Air	0.14~0.8 Mpa	Direct Action Type	5 Cycles/ Sec	Needless	5~60°C
GD2512A-06		G1 / 6	6						
GD2521A-08		G1 / 8	8						
GD2522A-08		G1 / 8	8						
GD2541A-15		G1 / 15	15						
GD2542A-15		G1 / 15	15						

Feature :

- Simple in Structure
- Robust design
- It is controlled by the Pneumatic Signal
- Highly sensitive to the Pneumatic Signal

Application:

These type of Valves are applicable to the places where the existence of power is forbidden. It is widely applied to the inflammable and explosive places such as coal hill, mines, natural gas etc.

TG Series Pilot Valve



TG

25

1

1A

06

C

Series

Valve Type
25: 2 Positions / 5 Ports
35: 3 Positions / 5 Ports

Connection Code
1: 1 / 8
2: 1 / 4
3: 3 / 8
4: 1 / 2

Control Form
1A: Single Air
Operated
2A: Double Air
Operated

Pipe Size
06: G1 / 8
08: G1 / 4
10: G3 / 8
15: G1 / 2

Working Mode
No Mark: 2 Positions
C: 3 Positions Closed
Center
E: 3 Positions Release
Center
P: 3 Positions Center

Item Specification	Valve Type	Pipe Size	Nominal Diameter (mm)	Applicable Medium	Applicable Pressure Range	Operating Method	Max Action Frequency	Lubrication	Applicable Temperature
TG2511A-06	2 Positions/ 5 Ports	G1 / 8	6	Air	0.15~0.8 MPa	Direct Action Type	5 Cycles / Sec	Needless	-5~60°C
TG2512A-06		G1 / 8	6						
TG2521A-08		G1 / 4	8						
TG2522A-08		G1 / 4	8						
TG2531A-10		G3 / 8	10						
TG2532A-10		G3 / 8	10						
TG2541A-15		G1 / 2	15						
TG2542A-15		G1 / 2	15						
TG3512A-06C	3 Positions/ 5 Ports	G1 / 8	6	Air	0.3~0.8 MPa	Direct Action Type	3 Cycles / Sec	Needless	-5~60°C



Pneumatic Accessories

Hand Valves

Feature:

- Two by five, Three by five
- Hand draw with normal & spring return
- Working pressure range: 0.15-1.0Mpa

GD

Series

25

Valve Type
23:2 position / 3 ports
25:2 position / 5 ports
35:2 position / 5 ports

1

Connection Code
1:1 / 8
2:1 / 4

1B

Control form
B:Hand Lever
BS:Hand Lever Spring Return
T:Toggle Type
H:Hand Draw
HS:Hand Draw Spring Return
HP: Hand Draw Pilot Return

6

Pipe size
06: 1 / 8
08: 1 / 4
15:G1 / 2

6

Working Mode
No Mark: 2 positions
C: 3 Position Closed Center
E: 3 Position Release Center

GD Series Hand Lever Valve



Item Specification	Valve Type	Pipe Size	Nominal Diameter (mm)	Applicable Medium	Applicable Pressure Range	Operating Method	Applicable Temperature	Lubrication
GD2321B-08	2 Positions/ 3 Ports	G1 / 4	8	Compressed Air	0.15~1.0 Mpa	Direct Action Type	5~60°C	Needless
GD2312BS-08		G1 / 4	8					
GD2311T-06		G1 / 8	6					
GD2321T-08		G1 / 4	8					
GD2311H-06		G1 / 8	6					
GD2311HS-06	2 Positions/ 5 Ports	G1 / 8	6					
GD2511B-06		G1 / 8	6					
GD2521B-08		G1 / 4	8					
GD2511BS-06		G1 / 8	6					
GD2521BS-08		G1 / 4	8					
GD2511T-06		G1 / 8	6					
GD2511T-08		G1 / 4	8					
GD2511H-06		G1 / 8	6					
GD2521H-08		G1 / 4	8					
GD2511HS-06		G1 / 8	6					
GD2521HS-08		G1 / 4	8					
GD2521HS-08P		G1 / 4	8					
GD3521B-08	3 Positions/ 5 Ports	G1 / 4	8					
GD3521BS-08		G1 / 4	8					

Ordering Code

GD

Series

34

Valve Type
34: 3 Positions / 4 Ports

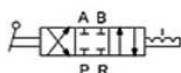
S

Control Form
S: Turning

06

Pipe Size
06: G1 / 8
08: G1 / 4
10: G3 / 8
15: G1 / 2

Graphic Sign



Technical Parameter

Item Specification	Valve Type	Pipe Size	Nominal Diameter (mm)	Applicable Medium	Applicable Pressure Range	Operating method	Effective Sectional Area	Applicable Temperature
GD34-S-08	3 Positions/ 4 Ports	G1 / 4	8	Air	0~1.0 MPa	Direct Action Type	16mm ₂ (CV=0.89)	-5~60°C
GD34-S-10		G3 / 8	10				33mm ₂ (CV=1.83)	
GD34-S-15		G1 / 2	15				88mm ₂ (CV=4.89)	

Features

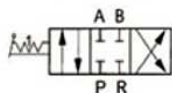
- Operating angle 90°.
- Ensured Pressure Resistance 1.2 Mpa.
- It is a manually 3 position and four way valve with hand seal structure.
- It can control air flow direction.
- Excellent seal and long life.
- Either panel / wall mounted.

GD Series hand Turn valve



3 Position / 4 Port Manually Turn valve

● Graphic Sign



■ Features

- It is a manual three position and four way valve with Hard seal structure.
- It can control airflow direction.
- Also drives pneumatic application with little operative force
- Excellent Seal and long life
- Either Panel/Wall mounted

● Ordering Code

TG

Series

34

Valve Type

34: 3 Positions / 4 Ports

S

Control Form

S: Turning

06

Pipe Size

06: G1 / 8

08: G1 / 4

10: G3 / 8

15: G1 / 2

TG Series 2 Position / 5 Port, 3 Position / 5 Port Hand Valve



2 Position / 5 Port, 3 Position / 5 Port Hand Valve



■ Features

- It is a pneumatic valve controlled manually.
- Small in dimension and Handsome in shape.
- Ergonomical hand lever design, reduce fatigue.
- High flow rate.
- Can be installed in Panel mounting.
- Application to the jigs and fixture assembly.

TG

Series

25

Valve Type

25: 2 Positions / 5 Ports

35: 3 Positions / 5 Ports

2

Connection Code

2: 1 / 4

3: 3 / 8

4: 1 / 2

1B

Control Form
Hand Lever

06

Pipe Size

06: G1 / 4

10: G3 / 8

15: G1 / 2

M

Way of installation
No Mark: Normal Type
M: Multiple location
installation

C

Working Mode
No Mark: 2 Positions
C: 3 Positions Closed Center
E: 3 Positions Release Center

■ Technical Parameter

Item Specification	Valve Type	Pipe Size	Nominal Diameter (mm)	Applicable Medium	Applicable Pressure Range	Operating Method	Lubrication	Applicable Temperature
TG2521B-08	2 Positions / 5 Ports	G1 / 4	8	Air	0 ~ 1.0MPa	Direct Action Type	Needless	-5~50°C
TG2512B-08M		G1 / 4	8					
TG2531B-10		G3 / 8	10					
TG2541B-15		G1 / 2	15					
TG3521B-08C	3 Positions / 5 Ports	G1 / 4	8	Air	0 ~ 1.0MPa	Direct Action Type	Needless	-5~50°C
TG3531B-10C		G3 / 8	10					



DYNAMIC

Pneumatic Accessories

GD Series Stem Actuated Valve



Feature:

- Two by three
- Working pressure range: 0.15-1.0Mpa

GD Series Foot Valve



Feature:

- Two by three
- Working pressure range: 0.15-1.0Mpa

GD Series Roller Valve



Feature:

- Two by three, Two by Five way
- Working pressure range: 0.15-1.0Mpa

GD

Series

321

Valve Type

321:2 position / 3 ports
521:2 position / 5 ports
320:2 position / 3 ports

RI

Connection Code

Control form
No Mark: stem Actuated
R: Roller lever
RI: Ideal return roller lever
J: Foot valve

6

Pipe size

M4:M4
06:1/8
08:1/4
M5:M5

Item Specification	Valve Type	Pipe Size	Applicable Medium	Applicable Pressure Range	Applicable Temperature
GD320-M4	2 Positions/ 3 Ports	M4	Compressed Air	0~1.0 Mpa	5~60°C
GD321-06		G1/8			
GD320R-M4		M4			
GD321R1-06	2 Positions /5 Ports	G1/8	Compressed Air	0~1.0 Mpa	+5~60°C
GD521R1-08		G1/4			
Gd320 J M5	2 Positions / 3 Ports	M5	Compressed Air	0~1.0 Mpa	+5~60°C

G322PB



G321EB



G321TB



G321LB



G

Mechanical Valve

32

Valve Type

32: 2 Positions / 1: G1/8
3 Ports

1

Pipe Size

R

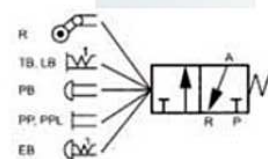
Push Button Type

No Mark: Standard Type
R: Roller lever
PP: Palm button

EB: Palm latching actuator

TB: Turning actuator

LB: Lever actuator



Specification	G321R, PP, PPL, PB, EB, TB, LB
Applicable Medium	Compressed Air
Pressure Range	0 ~ 1.0MPa
Operating Method	Mechanically Control, Manually control
Lubrication	Needless
Applicable Temperature	-10 ~ 60°C
The Button's Standard Color	Black: LB Red: PP, PPL, PB, EB, TB
The Button's Color Available	Green, Black PP, PPL, PB, TB



Foot Valves

G321



G321R



Tg25-J-08



TG-J-08L



Features

- Valve-Poppet Type
 - High reliability
 - High response
 - Compact Size.
- Foot Pedal-Pressure die casted pedal.
 - Convinient to operate without physical strain.
 - Spring return type.
- Also available with lock, Guard or combination of both.
- It Required small operation force and emancipation of hands
- Valve ports are interchangeable to change the normally close to normally open position

TG

Series

25

Valve Type

23: 2 Positions / 3 Ports
24: 2 Positions / 4 Ports
25: 2 Positions / 5 Ports

J

Control Form

J: Foot Pedal

08

Pipe Size

08: G1 / 4

L

Type Code

No Mark: Basic Type
L: With Lock
G: With Guard
LG: With Lock & Guard

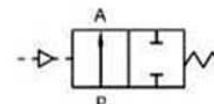
Item Specification	Valve Type	Pipe Thread	Nominal Diameter (mm)	Applicable Medium	Applicable PressureRange	Operating Method	Lubrication	Applicable Temperature
TG23-J-08	2 Positions/3 Ports	G1 / 4	8	Air	0~0.8MPa	Direct Action Type	Needless	-5~60°C
TG24-J-08	2 Positions/4 Ports	G1 / 4	8					
TG25-J-08	2 Positions/5 Ports	G1 / 4	8					
TG25-J-08L	2 Positions/5 Ports	G1 / 4	8					
TG25-J-08G	2 Positions/5 Ports	G1 / 4	8					
TG25-J-08LG	2 Positions/5 Ports	G1 / 4	8					

TG Series Angle Valve



Feature:

- Stainless Steel
- Long Service life
- No Leakage for 500 million time
- Can be operated with different medium



ZF
Series

15
Pipe Size
15: G1 / 2
20: G3 / 4
25: G1

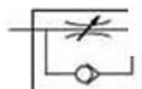
Item \ Specification	Normal Open	ZF-15	ZF-20	ZF-25	ZF-35	ZF-40	ZF-50
Material of Body		Stainless Steel					
Operating Method		Plunger Pilot					
Applicable Medium		Air, Water, Oil, Steam (50CST Below)					
Pipe Size		ZG 1/2	ZG 3/4	ZG 1	ZG 1 1/4	ZG 1 1/2	ZG 2
Nominal Diameter mm		13	20	25	32	40	50
Kv (m³/h)		4.2	8	19	27.5	42	55
Pressure Range MPa		0 ~ 1.6	0 ~ 1.1	0 ~ 1.1	1 ~ 1.5	0 ~ 1.25	0 ~ 1.1
Min. Control Pressure MPa		0.39	0.39	0.42	0.5	0.44	0.32
Executor Dimension Φ mm		50	50	63	80	100	125

GD Series Speed Control Valve



Feature:

- It is a one way flow control valve
- Can regulate the flow of compressed air in air passage
- Can precisely control the speed
- Compact in size and simple to use



GSV
Series

01
Pipe Size
01: G1 / 8
02: G1 / 4
03: G3 / 8
04: G1 / 2

Specification / Item	Pipe Size	Applicable Medium	Min. Operating Pressure	Applicable Pressure Range	Applicable Temperature
GSV-01	G1 / 8	Air	0.03MPa	0.05 ~ 1.2 MPa	-5~60°C
GSV-02	G1 / 4				
GSV-03	G3 / 8				
GSV-04	G1 / 2				

Speed Control Valve



Feature :

- Speed Control Valve
- It is a one way flow control valve
- Compact in Size and simple to use



Series
SV
ST



Pipe Size
01: G1 / 8
02: G1 / 4
03: G3 / 8
04: G1 / 2

Specification / Item		Pipe Size	Applicable Medium	Min. Operating Pressure	Applicable Pressure Range	Applicable Temperature
Precision Type	SV-01	G1 / 8	Air	0.03MPa	0.05 ~ 1.2 MPa	-5~60°C
	SV-02	G1 / 4				
	SV-03	G3 / 8				
	SV-04	G1 / 2				
Basic Type	ST-01	G1 / 8			0.05 ~ 0.8 MPa	-5~60°C
	ST-02	G1 / 4				
	ST-03	G3 / 8				
	ST-04	G1 / 2				

Feature :

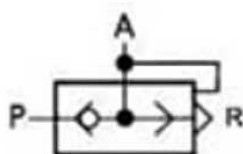
- It is a one-way directional control valve
- High flow rate
- Long life, with reliable performance



Series
QV
SE



Pipe Size
G 1/8
G 1/4
G 3/8
G 1/2
G 3/4



Quick Exhaust Valve

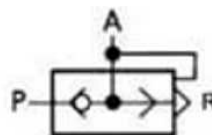


Item Specification	Pipe Size	Nominal Diameter (mm)	Min. Operating Pressure	Applicable Medium	Applicable Pressure Range	Applicable Temperature
QV-06	G1 / 8	6	≥ 0.03MPa	Air	0.05~1.2 MPa	-5~60°C
QV-08	G1 / 4	8				
QV-10	G3 / 8	10				
QV-15	G1 / 2	15	≥ 0.04MPa			
QV-20	G3 / 4	20	≥ 0.05MPa			

Item Specification	Pipe Size	Nominal Diameter (mm)	Flow Rate m ³ /min.	Applicable Medium	Applicable Pressure Range	Applicable Temperature
SE-06	G1/8	6	≥ 0.3	Air	0.12~1.0 MPa	-5~60°C
SE-08	G1/4	6	≥ 0.9			
SE-10	G3/8	8	≥ 2.5			
SE-15	G1/2	15	≥ 4.5			

Feature:

- It is a one way directional valve
- Discharges the compressed air of the system rapidly
- Small in dimension
- Long life with reliable performance



GD Series Quick Exhaust Valve

GQV

Series

06

Pipe Size

G 1/8

G 1/4

G 3/8

G 1/2



Item Specification	Pipe Size	Nominal Diameter (mm)	Min. Operating Pressure	Applicable Medium	Applicable Pressure Range	Applicable Temperature
GQV-01	G1 / 8	6	≤ 0.03MPa	Air	0.05~1.2 MPa	-5~60℃
GQV-02	G1 / 4	8				
GQV-03	G3 / 8	10	≤ 0.04MPa			
GQV-04	G1 / 2	15				

GD Series Non Return Valve



Feature:

- It is a kind of one-way control valve
- Zero leakage of the medium
- Simple structure with handsome shape
- The medium through this valve can only flow in one-way
- It prevent the simultaneous drops of pressure in a pneumatic
- unit/Equipment when the power shut off



GCV

Series

06

Pipe Size

Item Specification	Pipe Size	Nominal Diameter (mm)	Applicable Medium	Applicable Pressure Range	Min. Operating Pressure	Applicable Temperature
GCV-01	G1 / 8	6	Air	0.05~0.8 MPa	0.05MPa	-5~60°C
GCV-02	G1 / 4	8				
GCV-03	G3 / 8	10				
GCV-04	G1 / 2	15				

Feature:

- It is a combination of two one way valve
- It acts as "OR" of logic gate in both
- executive loop and control loop
- Working Pressure Range: 0.05-1.2MPa

Ordering code

KV
Series

06
Pipe Size

Ordering code

GKV

06

Shuttle Valve



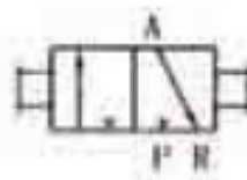
Item Specification	Pipe Size	Nominal Diameter (mm)	Applicable Medium	Applicable Pressure Range	Min. Operating Pressure	Applicable Temperature
KV-06	G1 / 8	3	Air	0.05~1.2 MPa	0.05MPa	-5~60°C
KV-08	G1 / 4	6				
KV-10	G3 / 8	8				
KV-15	G1 / 2	10				

Hand Slide Valve



Features

- Inline mounted
- Sleeve type, saves space
- Smooth,easy operation



HSV
Specification

02
Pipe Size
02: G1/4
04: G1/2

Specification	HSV-02	HSV-04
A	55	72
B	30	30
C	G1/4	G1/2
D	Φ 18	Φ 21
E	Φ 26	Φ 30
F	19	24

Item Specification	Pipe Size	Nominal Diameter (mm)	Applicable Medium	Applicable Pressure Range	Applicable Temperature
HSV-02	G1 / 4	8	Air	0 ~ 1.0 MPa	-5~60°C
HSV-04	G1 / 2	15			



Pneumatic Accessories

Solenoid Valves

Feature:

- Less wear and tear
- Zero Leakage
- 5 to 6 cycles/sec can be achieved
- It is the pneumatic valve controlled by micro electric signal
- Small in dimensions and handsome in shape
- Long service life
- Can be installed in integration with other solenoid valves

Allowable voltage range	±10%
Insulated grade	F class
Response time	0.05 Second
Power consumption	AC:405VA,DC:3W
Surge voltage suppressor	AC:Varistor, DC:Diode
Indicator light	Neon light, LED
Wiring form	G or L

GD Series Solenoid Valve



GD

Series

25

Valve Type

25:2 position / 5ports
35:3 position / 5ports

1

Connection code

1:1 / 8
2:1 / 4
3:3 / 8
4:1 / 2

1

Connection Form

1: Single solenoid operated
2: Double solenoid operated
F: Die cast Single solenoid operated
F: Die cast double solenoid operated

06

Pipe Size

06: G1 / 8
08: G1 / 4
10: G3 / 8
15: G1 / 2

C

Working mode

No mark: 2 Positions
C: Closed center
E: Release center
P: Center

AC220V

Standard voltage

DC24V
AC110V
AC220V

Feature:

- It is the pneumatic valve controlled by micro electric signal
- Small in dimensions and handsome in shape
- Long service life
- Can be installed in integration with other solenoid valves
- Applicable to electro mechanical integration

TG Series Solenoid Valve



TG

Series

25

Valve Type

23: 2 Positions / 3 Ports
25: 2 Positions / 5 Ports
35: 3 Positions / 5 Ports

1

Connection Code

1: 1 / 8
2: 1 / 4
3: 3 / 8
4: 1 / 2

1

Control Form

1: Single Solenoid Operated
2: Double Solenoid Operated

06

Pipe Size

06: G1 / 8
08: G1 / 4
10: G3 / 8
15: G1 / 2

C

Working Mode

No Mark: 2 Positions
C: Closed Center

AC220V

Standard Voltage

DC24V
AC110V
AC220V

Allowable Voltage Range		±10%
Insulated Grade		Class B or Equivalent
Response Time		0.05Sec
Power Consumption	AC	Start: 5.6VA, keep on: 5.4VA
	DC	4W
Surge Voltage Suppressor		AC: Varistor, DC: Diode
Indicator Light		Neon Light, LED



TG Series Valve

● TG23-08



TG 23-06
TG 23-08

TG Series Valve



TG 23-06 E

TG Series Valve



TG 22-08

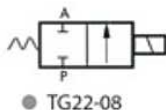
TG Series Valve



● 2P025-06

2P 025-06

● Graphics Sign



- TG22-08
- TG23-06
- TG23-08

● Graphics Sign



- TG23-06E

TG

Series

22

Valve Type

22: 2 Positions / 2 Ports

23: 2 Positions / 3 Ports

08

Pipe Size

06: G1 / 8

08: G1 / 4

AC220V

Standard Voltage

DC24V

AC110V

AC220V

2P

Specification Code

2P: Two-position Two-way Solenoid Valve
(Reinforced Plastic Steel Type)

025

Aperture of Flow Rate

025: 2.5mm

06

Joint Pipe Bore

06: 1 / 8"

08: 1 / 4"

AC220V

Standard Voltage

DC24V

AC220V

■ Technical Parameter

Item Specification	Valve Type	Pipe Size	Nominal Diameter (mm)	Applicable Medium	Applicable Pressure Range	Operating Method	Max Action Frequency	Lubrication	Applicable Temperature
TG22-08	2 Positions/ 2 Ports	G1 / 4	2.5	Air	0~0.8 MPa	Direct Action Type	5 Cycles / Sec	Needless	-5~50°C
TG23-06		G1 / 8	1.2						
TG23-08	2 Positions/ 3 Ports	G1 / 4	1.2						
TG23-06E		G1 / 8	1.2						

● Ordering Code

UWS

UWS

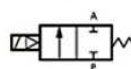
10

Pipe Size:
10: ZG3 / 8
15: ZG1 / 2
20: ZG3 / 4
25: ZG1
35: ZG1^{1/4}
40: ZG1^{1/2}
50: ZG2

AC220V

Standard Voltage:
AC110V
AC220V
DC24V

● Graphics Sign



■ Features

- Adopts stainless steel structure and diaphragm seal structure.
- Less corrosion and hence require less maintenance.
- Adopts zero differential pressure as starting function.
- Large flow rate and good waterproof performance.
- Provide multiple wiring direction.

UWS Series Solenoid Valve



● UWS-50

■ Technical Parameter

Item \ Specification	UWS-10	UWS-15	UWS-20	UWS-25	UWS-35	UWS-40	UWS-50
Material of Body	Stainless Steel						
Operating Method	Film Pilot						
Pipe Size	ZG3 / 8	ZG1 / 2	ZG3 / 4	ZG1	ZG1 ^{1/4}	ZG1 ^{1/2}	ZG2
Nominal Diameter (mm)	16	20	20	25	37	37	50
Applicable Fluid	Air, Water, Oil (50CST bellow)						
Pressure Range	0 ~ 0.8MPa						
Applicable Temperature	-5 ~ 99°C						
Specified Voltage	AC110V, AC220V, DC24V						
Operating Voltage Range	+10%						
Min. Activating Time	0.05S						
Install Method	Horizontal Fixing						

UW UWS

UW

15

Pipe Size:
15: ZG1 / 2
20: ZG3 / 4
25: ZG1
35: ZG1^{1/4}
40: ZG1^{1/2}
50: ZG2

AC220V

Standard Voltage:
AC110V
AC220V
DC24V

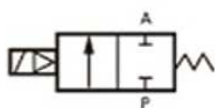
UW Series Solenoid Valve



Item \ Specification	UW-15	UW-20	UW-25	UW-35	UW-40	UW-50
Material of Body	Foundry					
Operating Method	Film Pilot					
Pipe Size	ZG1 / 2	ZG3 / 4	ZG1	ZG1 ^{1/4}	ZG1 ^{1/2}	ZG2
Nominal Diameter (mm)	20	20	25	37	37	50
Applicable Fluid	Air, Water, Oil (50CST bellow)					
Pressure Range	0 ~ 0.8MPa					
Applicable Temperature	-5 ~ 99°C					
Specified Voltage	AC110V, AC220V, DC24V					
Operating Voltage Range	+10%					
Min. Activating Time	0.05S					
Install Method	Horizontal Fixing					

US Series High- Temperature Solenoid Valve

● Graphics Sign



● Ordering Code

US

US

10

Pipe Size:
10: ZG3 / 8
15: ZG1 / 2
20: ZG3 / 4
25: ZG1
35: ZG1 1/4
40: ZG1 1/2
50: ZG2

AC220V

Standard Voltage:
AC110V
AC220V
DC24V



● US-15

● US-50

■ Features:

- It adopts teflon hard seal structure.
- Reliable performance.
- Anti corrosion and high temperature resistance.
- Large flow, high pressure and good water proofing performance.
- Multiple wiring direction.

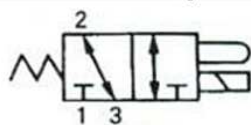
■ Technical Parameter

Item \ Specification	US-10	US-15	US-20	US-25	US-35	US-40	US-50
Material of Body	Foundry						
Operating Method	Plunger Pilot						
Pipe Size	ZG3 / 8	ZG1 / 2	ZG3 / 4	ZG1	ZG1 1/4	ZG1 1/2	ZG2
Nominal Diameter (mm)	17	17	17	20	30	30	50
Applicable Fluid	Air, Water, Oil (50CST below), Steam						
Pressure Range	0.05 ~ 1.5MPa						
Applicable Temperature	-5 ~ 185°C						
Specified Voltage	AC110V, AC220V, DC24V						
Operating Voltage Range	±10%						
Min. Activating Time	0.05S						
Install Method	Horizontal Fixing						



DYNAMIC

Pneumatic Accessories



VT307

01

AC220V

V

The High Frequency Valve

Pipe Size
01: G1/8
02: G1/4

Standard Voltage
DC24V
AC110V
AC220V

Vacuum
No Mark: Nominal

Specifications

Applicable Fluid	Air, inert gas
Enginery	Normally open or normally close
Medium Temperature	-5 ~ 60°C
Respond time	Max 20 millisecc
Max action frequency	10 Cycles/Sec
Lubrication	Needless
Hand operating	Without lock
Impulsion force resistane/brisancc	15G/5G(40 ~ 1000Hz)
Protect structure	Dust proof
Pressure Range	0 ~ 0.8MPa
Pipe Size	G1/4

VT Series High Frequency Valve



TM Series High Frequency Valve



Ordering Code

TM

06

AC220V

The High Frequency Valve

Pipe Size
06: G1/8
08: G1/4

Standard Voltage
DC24V
AC110V
AC220V

2Way Piston Type Steam Solenoid Valves



Actuation Type	2 way piston type internal pilot operated
Size range	1/4 to 6
Body	Cf8
Seals	Teflon (Viton / EPDM on request)
Pressure	8PSI to 180 PSI/ 280 PSI/ 1500 PSI
Temperature	Upto 180 C
Ends	Screwed / flanged / tricolver
Media	Steam/ Hot water/ High Temp Fluids
Available volt.	All standard Voltage available.

Size range	3/8 to 6 Inches
Body	Cf8
Diaphragm	Neoprene/ nitrile/ Teflon
Pressure	0 to 6 bar
Temperature	5 C to 85 C / 140 C (High temp. on Order)
Ends	Screwed / flanged / tricolver
Media	Air/ hot water oil, Gas & Vacuum
Available volt.	All standard Voltage available

Dust Collector Solenoids valves pulse valves



Size range	1/2 to 3 Inches
Body	Alluminium Die cast
Diaphragm	Neoprene/ nitrile/ PU
Pressure	0.6 to 10 Bar
Temperature	80 C Max (Upto 125 C on request)
Available volt.	All standard Voltage available

Low pressure Solenoid valves





Pneumatic Accessories

AC2010-02



AC2010-02U



AC4010-02D



AC4010-04



AC 2000-02



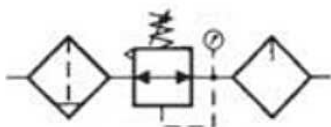
AC 2000-02 U



AC 4000-04



AC 4000-04D



AC

2010

02

D

U

Series

Type

Pipe Size

Drainage Type

Iron Shell

2010

01: G1 / 8

No Mark

No Mark

3010

02: G1 / 4

Standard Manual Drain

2010 No Iron Shell

4010

03: G3 / 8

Type

3010~5010 With Iron Shell

5010

04: G1 / 2

D: Auto Drain

U: 2010 With Iron Shell

06: G3 / 4

10: G1

Features

- ▶ Modular and compact type for easy and fast maintenance.
- ▶ Suitable for panel mounting.
- ▶ Need small installation space.
- ▶ Steel body gaurd models are also available.
- ▶ Pressure compensated by balance poppet.
- ▶ Suitable for those pneumatic systems which requires less space.
- ▶ Filter-bronze filtering element.

Specification	AC2010-02	AC3010-03	AC4010-04	AC4010-06	AC5010-10	
Applicable Medium	Air					
Rating Flow(L/min)	500	1700	3000	3000	4000	
Filtration	20-40 μm					
Applicable Pressure	0.05 ~ 0.85MPa					
Applicable Temperature	0~60℃					
Recommended Lubricating Oil	ISOVG32 or Equivalent					
Type of Valve	Relief Type					
Gauge Port Size	G1 / 8		G1 / 4			
Component	Filter Regulator	AW2000-02 / U	AW3000-03	AW4000-04	AW4000-06	AW5000-10
	Air Lubricator	AL2000-02 / U	AL3000-03	AL4000-04	AL4000-06	AL5000-10

● Graphics Sign



● Ordering Code

AF

2000

02

D

U

Series	Type	Pipe Size	Drainage Type	Iron Shell
2000	01: G1 / 8	No Mark:	2000 No Iron Shell	
3000	02: G1 / 4	Standard Manual Drain	3000~5000 With Iron Shell	
4000	03: G3 / 8	Type		
5000	04: G1 / 2	D: Auto Drain		
	06: G3 / 4			
	10: G1			

● AF2000-02

● AF2000-02U

● AF4000-04

● AF4000-04D

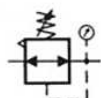
■ Features:

- Highly Safety.
- Long Life.
- Mainly used for cleaning of compressed air.
- Available in auto/manual drain.
- Can directly be installed in the pneumatic pipe line.
- Can be freely combined with other air source treatment product.
- Effectively eliminates various impurities in compressed air.

■ Technical Parameter

Specification	AF2000-02	AF3000-03	AF4000-04	AF4000-06	AF5000-10
Applicable Medium	Air				
Rating Flow(L/min)	750	1500	4000	6000	7000
Filtration	20-40 μ m				
Max Pressure	1.0MPa				
Applicable Temperature	0~60°C				
Gauge Port Size	G1 / 8		G1 / 4		
Drain Holding Capacity	15cm ³	20cm ³	45cm ³		130cm ³

● Graphics Sign



● Ordering Code

AR

2000

02

Series	Type	Pipe Size
2000	01: G1 / 8	
3000	02: G1 / 4	
4000	03: G3 / 8	
5000	04: G1 / 2	
	06: G3 / 4	
	10: G1	

● AR2000-02

● AR3000-03

● AR4000-04

● AR4000-06

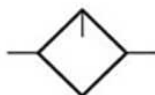
■ Features:

- Only used for regulating pressure in the line.
 - Can directly be installed in the pneumatic pipe line.
 - High precision and quick reaction.
 - Can be freely combined with other air source treatment product.
- It has advantage of stable pressure and firm lockup.

■ Technical Parameter

Specification	AR2000-02	AR3000-03	AR4000-04	AR4000-06	AR5000-10
Applicable Medium	Air				
Rating Flow(L/min)	550	2500	6000	6000	8000
Applicable Pressure Range	0.05 ~ 0.85MPa				
Applicable Temperature	0~60°C				
Type of Valve	Relief Type				
Gauge Port Size	G1 / 8		G1 / 4		

● Graphics Sign



● AL2000-02



● AL2000-02U



● AL4000-04



● AL4000-06

● Ordering Code



Series	Type	Pipe Size	Iron Shell
	2000	01: G1 / 8	No Mark:
	3000	02: G1 / 4	2000 No Iron Shell
	4000	03: G3 / 8	3000~5000 With Iron Shell
	5000	04: G1 / 2	U: 2000 With Iron Shell
		06: G3 / 4	
		10: G1	

■ Features:

- Mainly used for lubricating of compressed air.
- Stable Oil pressure and firm lockup.
- Can be freely combined with other air source treatment product.
- Stable oil pressure and high precision.

■ Technical Parameter

Specification	AL2000-02	AL3000-03	AL4000-04	AL4000-06	AL5000-10
Applicable Medium	Air				
Rating Flow(L/min)	800	1700	5000	6300	7000
Max Pressure	0.05 ~ 0.8MPa				
Applicable Temperature	0~60°C				
Recommended Lubricating Oil	ISOVG32 or Equivalent				
Gauge Port Size	G1 / 8		G1 / 4		
Min Flow For Oil Drip	15L/min	30L/min	50L/min	50L/min	190L/min
Lubricating Oil Capacity	25cm ³	50cm ³	130cm ³		

Size	¼ & ½, ¾ & 1
Body	Upto Aluminium press Die Cast/ forged brass
Pressure	Upto 10 / 28 / 42 Kg/Cm
Media	Air

Special regulator
(Solainoids Valves)





DYNAMIC

Pneumatic Accessories

Pneumatic Fittings

● Ordering Code



- ① Series No. Series E in black color
- ② Model Type
- ③ Tube Outer Dia.
- ④ Thread Type & Size



	Metric Size						
Code	4	6	8	10	12	14	16
Dia.	φ4	φ6	φ8	φ10	φ12	φ14	φ16

	Metric Size								
Code	M5	M6	M8	M10	M12	M12A	M14	M16	M20
Size	M5x0.8	M6x1	M8x1	M10x1	M12x1.25	M12x1.5	M14x1.5	M16x1.5	M20x1.5

	55° Taper Pipe Thread (PT)			
Code	01	02	03	04
Size	R1/8	R1/4	R3/8	R1/2

	G-Thread			
Code	G01	G02	G03	G04
Size	G1/8	G1/4	G3/8	G1/2

■ Features:

- Quick installation, simple and flexible, space saving.
- The tube fitting comes in a wide variety of models to meet all your needs in pneumatic piping.
- Even after installation, the direction of tubing can be changed freely.
- The release ring adopts the ellipse design to make it more convenient and labor-saving for disconnection.
- All taper pipe threads are pre-coated with Teflon with fine seal performance.
- Apart from φ16, all EPC models are equipped with the internal hexagonal holes.
- It is easy for them to be mounted in the narrow places.

■ Technical Parameter

Fluid Type	Air, Vacuum
Operating Pressure	0 ~ 10.2kgf/cm ² (0 ~ 1.0MPa)
Maximum Pressure	15.3kgf/m ² (1.5MPa)
Operating Temperature Range	0 ~ 60°C
Tube Material	Polyurethane and Nylon

MODEL	DESCRIPTION	SIZE	
EPC	MALE CONNECTOR	EPC4-M5	EPC8-04
		EPC4-01	EPC10-01
		EPC4-02	EPC10-02
		EPC6-M5	EPC10-03
		EPC6-01	EPC10-04
		EPC6-02	EPC12-02
		EPC6-03	EPC12-03
		EPC6-04	EPC12-04
		EPC8-01	
		EPC8-02	EPC16-03
		EPC8-03	EPC16-04

MODEL	DESCRIPTION	SIZE	
EPL	MALE ELBOW	EPL4-M5	EPL8-04
		EPL4-01	EPL10-01
		EPL4-02	EPL10-02
		EPL6-M5	EPL10-03
		EPL6-01	EPL10-04
		EPL6-02	EPL12-02
		EPL6-03	EPL12-03
		EPL6-04	EPL12-04
		EPL8-01	
		EPL8-02	EPL16-03
		EPL8-03	EPL16-04

MODEL	DESCRIPTION	SIZE	
EPB	Male Branch "TEE"	EPB4-M5	EPB8-04
		EPB4-01	EPB10-01
		EPB4-02	EPB10-02
		EPB6-M5	EPB10-03
		EPB6-01	EPB10-04
		EPB6-02	EPB12-02
		EPB6-03	EPB12-03
		EPB6-04	EPB12-04
		EPB8-01	EPB16-03
		EPB8-02	EPB16-04
		EPB8-03	

MODEL	DESCRIPTION	SIZE	
EPD	Branch "TEE"	EPD4-M5	EPD10-04
		EPD4-02	EPD12-02
		EPD6-01	EPD12-03
		EPD6-02	EPD12-04
		EPD8-01	EPD4-01
		EPD8-02	EPD6-M5
		EPD8-03	
		EPD8-04	
		EPD10-02	
		EPD10-03	

MODEL	DESCRIPTION	SIZE	
EPX	Male Branch "Y"	EPX4-01	
		EPX6-01	
		EPX6-02	
		EPX8-01	
		EPX8-02	
		EPX10-02	
		EPX12-02	
		EPX12-04	

MODEL	DESCRIPTION	SIZE	
EPH	Banjow Elbow	EPH4-M5	
		EPH4-01	
		EPH4-02	
		EPH6-M5	
		EPH6-01	
		EPH6-02	
		EPH8-01	
		EPH8-02	
		EPH10-02	
		EPH12-02	
		EPH12-04	

MODEL	DESCRIPTION	SIZE	
EPKB	Equal Multi "TEE"	EPKB-6-02	
		EPKB-8-02	

MODEL	DESCRIPTION	SIZE	
EPHF	Female Banjow Elbow	EPHF6-01	
		EPHF6-02	
		EPHF8-01	
		EPHF8-02	

MODEL	DESCRIPTION	SIZE
EPLF	Female Elbow	EPLF4-01
		EPLF6-01
		EPLF6-02
		EPLF8-01
		EPLF8-02
		EPLF10-02
		EPLF12-02
		EPLF12-04
		EPLF4-02
		EPLF6-M5



MODEL	DESCRIPTION	SIZE
EPE	Equal "TEE"	EPE04
		EPE06
		EPE08
		EPE10
		EPE12
		EPE16



MODEL	DESCRIPTION	SIZE
EPCF	Female Connector	EPCF4-01 EPCF10-02
		EPCF4-02 EPCF10-03
		EPCF6-01 EPCF10-04
		EPCF6-02 EPCF12-02
		EPCF6-03 EPCF12-03
		EPCF6-04 EPCF12-04
		EPCF8-01 EPCF16-03
		EPCF8-02 EPCF16-04
		EPCF8-03
		EPCF8-04
		EPCF10-01



MODEL	DESCRIPTION	SIZE
EPP	Blanking Plug	EPP04
		EPP06
		EPP08
		EPP10
		EPP12



MODEL	DESCRIPTION	SIZE
EPZA	Equal Cross	EPZA04
		EPZA06
		EPZA08
		EPZA10
		EPZA12



MODEL	DESCRIPTION	SIZE
EPY	Equal "Y"	EPY04
		EPY06
		EPY08
		EPY10
		EPY12



MODEL	DESCRIPTION	SIZE
EPK	Equal Multi "TEE"	EPK04
		EPK06
		EPK08



MODEL	DESCRIPTION	SIZE
EPV	Equal Elbow	EPV04
		EPV06
		EPV08
		EPV10
		EPV12
		EPV16




Features:

- The hand valves are designed to turn on and off the airflow.
- Two-way and three-way valves are available for all models.
- It exhausts the residue air after the close of three-way control valve.
- Multiple patterns with easy use.
- G-Thread type also available.


Specifications

Ports	Two-way, Three-way
Fluid	Air
Maximum Pressure	15.3kgf/cm ²
Maximum Operating Pressure	10.2kgf/cm ²
Operating Temperature	0 ~ 60°C
Tube Material	Nylon and Polyurethane

MODEL	DESCRIPTION	SIZE
EHVFS	Hand Valve	EHVFS6-01
		EHVFS6-02
		EHVFS8-01
		EHVFS8-02
		EHVFS10-03



MODEL	DESCRIPTION	SIZE
EHVFF	Hand Valve	EHVFF6-6
		EHVFF8-8
		EHVFF10-10
		EHVFF12-12



Speed Controller

Features:

- Directly Mountable on Cylinder/inline.
- For Cylinder valve can be rotated by 360°.
- Fine Regulation of Air Flow.
- Nickel Plated Body.
- Male Thread are Teflon Coated.
- Elegant Design and Finish.
- Can precisely control the air flow rate upto Optimum level.
- Compact one touch design.

MODEL	DESCRIPTION	SIZE
ESL	Flow Control Valve	ESL4-M5 ESL8-04
		ESL4-01 ESL10-01
		ESL4-02 ESL10-02
		ESL6-M5 ESL10-03
		ESL6-01 ESL10-04
		ESL6-02 ESL12-02
		ESL6-03 ESL12-03
		ESL6-04 ESL12-04
		ESL8-01
		ESL8-02
		ESL8-03



MODEL	DESCRIPTION	SIZE
ESA	Flow Control in Line	ESA04
		ESA06
		ESA08
		ESA10
		ESA12



MODEL	DESCRIPTION	SIZE
EPM	Bulkhead	EPM04
		EPM06
		EPM08
		EPM10
		EPM12



MODEL	DESCRIPTION	SIZE
EPEG	Unequal "TEE"	EPEG6-4
		EPEG8-6
		EPEG10-8
		EPEG12-10



MODEL	DESCRIPTION	SIZE
EPU	Equal Tube to Tube	EPU04
		EPU06
		EPU08
		EPU10
		EPU12
		EPU16



MODEL	DESCRIPTION	SIZE
EPW	Unequal "Y"	EPW6-4
		EPW8-6
		EPW10-8
		EPW12-10



MODEL	DESCRIPTION	SIZE
EPGJ	Tube Reducer	EPGJ6-4
		EPGJ8-6
		EPGJ10-8
		EPGJ12-8
		EPGJ12-10



MODEL	DESCRIPTION	SIZE
EPG	Unequal Tube to Tube	EPG6-4
		EPG8-6
		EPG10-8
		EPG12-10



MODEL	DESCRIPTION	SIZE
BSL	Metal Silencer	BSL-M5
		BSL-01
		BSL-02
		BSL-03
		BSL-04
		BSL-06



MODEL	DESCRIPTION	SIZE
BESL	Silencer with Flow Control	BESL-01
		BESL-02
		BESL-03
		BESL-04




MODEL	DESCRIPTION	SIZE
BSLM	Mini Metal Silencer	BSLM-01
		BSLM-02
		BSLM-03
		BSLM-04
		BSLM-06



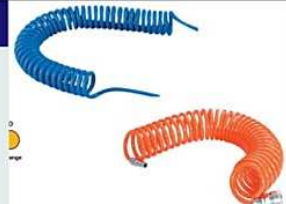
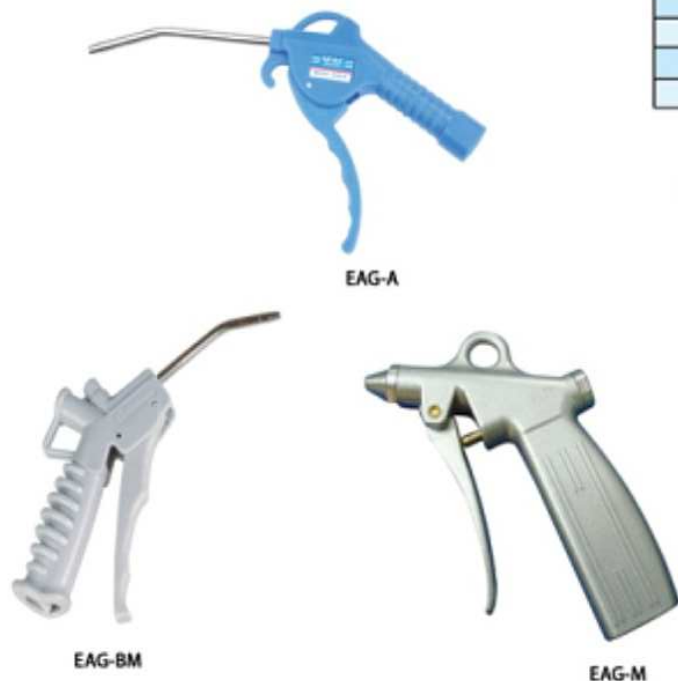
MODEL	DESCRIPTION	SIZE
PSL	Plastic Silencer	PSL-01
		PSL-02
		PSL-03
		PSL-04



MODEL	DESCRIPTION	SIZE
PSU	Plastic Silencer	PSU-01
		PSU-02
		PSU-03
		PSU-04



MODEL	DESCRIPTION	SIZE
PU Fitting		

MODEL	DESCRIPTION
EAG-A	AIR GUN
EAG-BM	AIR GUN
EAG-M	METAL AIR GUN

■ Features:

- Strong blow, low consumption, energy saving.
- It is fit for cleaning for any kind of machines and equipments.
- Opt-The piston type structure.
- Long life stable and reliable performance.
- Opt-It has two input at the top & other at the bottom so it is very convenient to user in various occasions,



Dynamic - The Next Generation

DYNAMIC ENTERPRISES INC.



DYNAMIC

235 B, Pariwar Apartment, Gr. Floor, Bibwewdi,
Pune - 411037 (India),

Phone : (020) 24213958 **Fax :** (020) 24213958

Mobile : 9422004253 / 9423033465 /
9767435913 / 9922043410

E-mail - [dynamicenterprisesinc@hotmail.com/](mailto:dynamicenterprisesinc@hotmail.com)
[marketing@dynamicenterprisesinc.com/](mailto:marketing@dynamicenterprisesinc.com)
dynamicenterprisesinc@gmail.com

Web - www.dynamicenterprisesinc.com



DYNAMIC ENTERPRISES INC.



DYNAMIC

Dynamic - The Next Generation

INDEX

ABOUT US	1
MOISTURE SEPARATOR	2
Moisture Separator	
Centrifugal Moisture Separators	
Industrial Moisture Separators	
COMPRESSED AIR/GAS FILTERS (High Efficiency)	3 - 5
Aluminium Cast Dy	SS Filter
Mini Series - Polycarbonate bowl	Mini air dryer
SS Compressed Air/Gas Filter	Replacement Cartridges
FILTERS	6 - 7
Oxygen / Nitrogen gas Filter	
Steam Filters	Bucket Strainer
LPG Filters	Y Strainer
HYDRAULIC FILTERS, ACCESSORIES FITTING & HOSES	8
Hydraulic Filters	
Hydraulic Hoses & Accessories	
AUTOMATIC CONDENSATE DRAIN VALVE	9 - 10
Automatic Condensate Drain Valves (Timer Operated)	
Auto drain valves (Float Type)	
AIR COMPRESSR, AIR DRYERS & AIR RECEIVERS	11 - 12
Air Compressors	
After cooler	Refrigerated Air Drying Unit
Heatless Air Drying Unit	Air Receivers
PRESSURE / TEMPERATURE GAUGES	13 - 14
Pressure Gauges	
Diaphragm Sealed Gauges	Special Purpose Gauges
Temperature gauges	Pressure cum Temperature Gauges
Capsule Pressure Gauges	Bourdon Pressure Gauges
Diaphragm Gauges	Differential Pressure Gauges
PRESSURE/ TEMP SWITCHES, THERMOSTATS	15 - 16
Pressure Switch - Type Ps / Psu	Pressure Switch - Type B
Pressure Switch - Type Ips	Differential Pressure Switches
Pressure Switch - Type Rt	Type D
MANUAL VALVES	17 - 20
Ball Valves	
Ball Valves, Needle Valves,	High Pressure Needle Valves
Globe Valves	Butterfly Valves
High Pressure ball Valves	Diaphragm Valves
Forged Ball Valves	Pressure Reducing Valves
Investment Casting Ball Valves	Disc Check Valves
Gate Valves	Safety Manual Valves
Globe Valves	
ACTUATOR & CONTROL VALVES	21 - 22
Pneumatic rotary actuator	
3 Piece ball valves with Pneumatic Rotary actuator	
3-4 way ball valves with Pneumatic Rotary actuator	
Butterfly Valves with Pneumatic Rotary actuator	
Pneumatic Actuators	
3/2 way Pneumatic cylinder operated control Valves	
2/2 & 3/2 way Pneumatic Diaphragm operated control Valves	
2/2 way Pneumatic angle type On/Off control Valves	

PNEUMATIC ACCESSORIES	
A) PNEUMATIC CYLINDER	23 - 28
Heavy duty Pneumatic cylinders	
SDNC Series Cylinder	SPM Series Cylinder
ESC Series Standard Cylinder	SDNU-S Series Cylinder
ESU Series Mickey Mouse Cylinder	SDA Series Cylinder
EMAL Series Cylinder	SDVU Series Cylinder
B) PILOT VALVES	29
GD Series Pilot Valve	
TG Series Pilot Valve	
C) HAND VALVES	30 - 32
GD Series Hand Lever Valve	
GD Series hand Turn valve	
TG Series 2 Position / 5 Port, 3 Position / 5 Port Hand Valve	
2 Position / 5 Port, 3 Position / 5 Port Hand Valve	
GD Series Stem Actuated Valve	
GD Series Foot Valve	
GD Series Roller Valve	
G322PB, G321EB, G321TB, G321LB, G322EB, G322PB, G322TB	
G322LB, G322, G322R, G322PP, G322PPL, G321, G321R, G321PP	
G321PPL	
C) FOOT VALVES	33 - 37
G321, G321R, Tg25- J -08, TG- J -08L	
TG Series Angle Valve	GD Series Quick Exhaust Valve
GD Series Speed Control Valve	GD Series Non Return Valve
Speed Control Valve	Shuttle Valve
Quick Exhaust Valve	Hand Slide Valve
D) SOLENOID VALVES	38 - 47
GD Series Solenoid Valve	
TG Series Solenoid Valve	
TG Series Valve	
UWS Series Solenoid Valve	
UW Series Solenoid Valve	
US Series High-Temperature Solenoid Valve	
VT Series High Frequency Valve	
TM Series High Frequency Valve	
2Way Piston Type Steam Solenoid Valves	
Low pressure Solenoid valves	
Dust Collector Solenoids valves pulse valves	
FRLS, Filter Regulator, GAF Series Filter, GAR Series Regulator	
GAL Series Lubricator	
AC2010-02, AC2010-02U, AC4010-02D, AC4010-04, AC 2000-02	
AC 2000-02 U, AC 4000-04, AC 4000-04D	
E) PNEUMATIC FITTINGS	48 - 53
EPC, EPL, EPB, EPD, EPX, EPH, EPKB, EPHF, EPLF, EPE, EPCF	
EPP, EPZA, EPY, EPK, EPV, EHVFS, EHVFF, ESL, ESA, EPM, EPEG	
EPU, EPW, EPGJ, EPG, BSL, BESL, BSLM, PSL, PSU, PU FITTINGS	
EAG-A, EAG-BM, EAG-M	