

“Hydraulic Mastery in Every Part, Every Assembly.”



We are Dealing with

- Earth Moving Industries
- Power Plant Industries
- Construction Industries
- Mining & Underground Industries
- Water Management & Recycling
- Pharmaceutical & Chemical Industries
- Food & Beverage Industries
- Oil Rig Industries
- Lift Industries
- Air Compressor / Plastic Mfg. Industries

ABOUT COMPANY

CHHAYA HYDRAULICS is the Leading name in manufacturers of Flexible Hose Assemblies.

Our wide product range includes Steam Hose Assemblies. Low and Hi Pressure Hydraulic Hose Assemblies, Adaptors and Variety of Fittings. The Company, established long back in 1990, has today won the satisfaction of the Clientele spread over in the varied application Industries.

Our Simple Secret is the quest for Excellence in Quality, Design and Service.

Our team of Technical Experts at **CHHAYA HYDRAULICS** takes enough pain to have in-depth study of real application. Products designed precisely, manufactured in stringent quality controls and tested thoroughly, finally get the **CHHAYA HYDRAULICS** Mark. The mark that assures products loaded with a weighted performance.

The Expertise coupled with more than 33 years of Experience works perfectly and so do the products.

PRODUCT QUALITY

We will provide Products & Services of the best standard to higher-up the expectation of the Customer.

CHHAYA HYDRAULICS'S Quality Philosophy is: "We do not compromise, because our Customers do not."

QUALITY KEY FACTORS

- Commitment to Dedication, Innovation, Technical Up gradation and Best Value for Money.
- We specialize in providing LEAK-PROOF HOSE ASSEMBLIES, ensuring reliable and secure fluid connections for various industrial applications."

QUALITY VALUES:

- Maintain business ethics to strengthen relationship.
- Creativity and teamwork at the workplace.
- Respect for our Customers, Suppliers, Employees and Community.

WE COMMIT TO:

- Understanding real application and Customer's expectation.
- Maintain Fully that are Integrated Quality Management System to meet the standards internationally accepted.
- Design the products most precisely to meet exact requirement and to perform the best, in cost effective manner.
- Adopt best manufacturing process well equipped with Technical capacities.



HOSE PIPE

SR NO	HOSE TYPE	HOSE ID	3/16"	1/4"	5/16"	3/8"	1/2"	5/8"	3/4"	1"	1.1/4"	1.1/2"	2"	2.5"	3"	4"
1	EN 853 R1/SN1	BAR	250	225	215	180	160	130	105	90	65	50	40	40	35	10
		PSI	3625	3665	3120	2610	2320	1885	1525	1305	945	725	580	580	510	145
2	EN 853 R2/SN2	BAR	415	400	350	330	275	250	215	165	125	90	80	70	55	50
		PSI	6020	5800	5075	4785	3990	2625	3120	2395	1815	1305	1160	1015	800	725
3	100 R3 SAE J517	BAR	105	90	85	80	70	65	55	40	30	20				
		PSI	1525	1305	1235	1160	1015	945	800	580	435	290				
4	100 R6 SAE J517	BAR	35	30	30	30	30	25	25	15	20	15				
		PSI	510	435	435	435	435	365	365	220	290	220				
5	4SP	BAR				445	415	350	350	280						
		PSI				6455	6020	5075	5075	4060						
6	4SH	BAR							420	380	325	290	250			
		PSI							6090	5510	4715	4205	3625			
7	R13	BAR							350	350	350	350	350			
		PSI							5075	5075	5075	5075	5075			
8	TRIFLEX	BAR				500	470	410	375	315						
		PSI				7250	6815	5945	5440	4570						
9	JACKHOSE RUBBER	BAR		700	700	700										
		PSI		10150	10150	10150										
10	THERMO-PLASTIC JACKHOSE	BAR		700		700	500		350	300						
		PSI		10000		10000	7250		5000	4350						
11	WATER BLAST 30K	BAR		850		850	850		850	850						
		PSI		12325		12325	12325		12325	12325						
12	WATER BLAST 40K	BAR				1100	1100		1100							
		PSI				15950	15950		15950							
13	STEAM HOSE IS 10655	BAR	HOSE FOR			20	20		20	20	20	20	20	20	20	
		PSI	TEMPERATURE +210 C			290	290	290	290	290	290	290	290	290	290	290
14	WATER S&D HOSE	BAR	HOSE PIPE FOR WATER SUCTION & DISCHARGE HOSE W.P.- 10BAR (150 PSI), SIZE - 3/4" TO 8" (ID- 19MM TO 203MM)													
		PSI	HOSE PIPE FOR WATER SUCTION & DISCHARGE HOSE W.P.- 10BAR (150 PSI), SIZE - 3/4" TO 8" (ID- 19MM TO 203MM)													
15	OIL S&D HOSE	BAR	HOSE PIPE FOR OIL SUCTION & DISCHARGE HOSE W.P.- 10BAR (150 PSI), SIZE - 3/4" TO 8" (ID- 19MM TO 203MM)													
		PSI	HOSE PIPE FOR OIL SUCTION & DISCHARGE HOSE W.P.- 10BAR (150 PSI), SIZE - 3/4" TO 8" (ID- 19MM TO 203MM)													
16	SEWER JET	BAR	SEWER JET HOSE PIPE 2500 PSI (175 BAR) THERMOPLASTIC ELSTOMER, COLOR - ORANGE, SIZE-3/4" & 1"													
		PSI	SEWER JET HOSE PIPE 2500 PSI (175 BAR) THERMOPLASTIC ELSTOMER, COLOR - ORANGE, SIZE-3/4" & 1"													
17	SEWER JET	BAR	SEWER JET HOSE PIPE 3000 PSI (210 BAR) THERMOPLASTIC ELSTOMER, COLOR - BLUE, SIZE-3/4", 1" & 1.1/4"													
		PSI	SEWER JET HOSE PIPE 3000 PSI (210 BAR) THERMOPLASTIC ELSTOMER, COLOR - BLUE, SIZE-3/4", 1" & 1.1/4"													
18	PNEUMATIC TOOL HOSE	BAR		20	20	20	20		20	20						
		PSI		290	290	290	290		290	290						
19	TEFLON HOSE	BAR		175	160	150	135	100	80	55	45	35	25	P.T.F.E HOSE SINGLE BRAID OF 304/316 SS WIRE		
		PSI		2500	2300	2200	1960	1450	1160	800	665	510	360	P.T.F.E HOSE SINGLE BRAID OF 304/316 SS WIRE		
20	PAINT SPRAY-2W	BAR		450	400	380	300	210	160	150						
		PSI		6500	5800	5500	4350	3000	2300	2175						
21	R7 SAE 517-100R7	BAR	210	190	175	155	140	105	90	70	70					
		PSI	3000	3000	2750	2500	2050	1500	1300	1000	1000					

ALL TYPES OF HOSE PIPES AVAILABLE

- High Pressure Hydraulics
- Stainless steel corrugated Hose
- Steam hose for industrial Application
- PTFE Teflon Hose
- G. I. Braided low pressure Hose
- Water blast hose
- Food grade Hose (UHMWPE & XLPE)
- Thermoplastic Hose

Upto 35000 psi and Temp. 220 c Special Application Fitting & Hoses.

HOSE AND FITTINGS FOR SPIRAL HOSES

Fittings are designed for mounting on to hydraulic hose, The fitting must be compatible to the hose in order to withstand the rigors encountered in extreme working conditions. HPS End Fittings are manufactured from different materials namely -

- Carbon Steel
- Stainless Steel
- Brass
- Other Material

Fittings made from normal Carbon Steel are the most common and are Cr-VI free electro zinc plated for protection against corrosion and finished with clear passivation. HPS end fittings are manufactured as per international standards and two piece configuration in NON-SKIVE style .Complete range available as per below standard



BSP, DIN METRIC, SAE ORFS, JIC, JIS, KOMATSU , CAT



**We Specialize in
Manufacturing Hose
Pipe Fittings Using SS 304
and SS 316 Materials.**

HOSE AND FITTINGS FOR WIRE BRAID HOSES

BSP, DIN METRIC, SAE ORFS, JIC, JIS

- Straight Fittings
- One Pcs & Two Pcs
- 90 /45 Degree Fittings
- Male Fittings
- NPT Male Set
- 4SP Fittings
- R13 Fittings
- JCB Fittings
- Nut Crimping Fittings
- Benzo Fittings
- LP Fittings

Selecting the right hose and fittings combination usually belongs to the last steps in the design of a hydraulic system and its importance is often overlooked and underestimated. The right hose and fitting combination is however, vital for the overall functionality and long term service life of the complete system.



FERRULE FITTINGS

ALL TYPE OF TUBE FITTINGS WITH FERRULE OR WELDING NIPPLE

- Straight Coupling
- Equal Elbow
- Equal Tee
- Male Stud Coupling
- Swivel Banjo & Elbow
- Welding & Gauge Coupling
- Run Tee
- Bulk Head Straight
- Branch Tee
- Socket Head Plug



with ED seal or without ED seal up to 700 bar from 6mm to 42 mm

"CHHAYA HYDRAULICS"

is proud to offer a wide range of manufacturing accessories, all produced in-house to guarantee quality and precision in every component."

ACCESSORIES



REDUCER



MALE TEE



FEMALE TEE



MALE ELBOW



FEMALE ELBOW



ADAPTOR



STAND PIPE
ADAPTOR



WELDING
ADAPTOR



HEX. PLUG



COUPLING



All types of fittings from M.S., S. S., & G. S Materials like

- Adaptor
- Reducer
- Hex Plug
- Hex Female Couplings
- Male X Female Swivel Tee
- Male X Female Swivel Elbow
- Welding Adaptor
- Male Female Swivel Elbow
- Round Female Coupling
- Weld Nipple
- Female Tee
- Male Tee
- Male Elbow
- Female Elbow
- Blind Plug
- Collar Plug

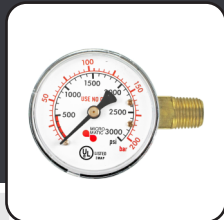
upto 700kg/cm², from 1/4" to 4" size



HYDRAULIC ACCESSORIES

All type of filtration Components Related to Power Units & Machines like

- High Pressure Filters
- Return Line Filters
- Suction Strainers
- Level Gauge
- Knob type Oil Level Indicator
- Filler Breather Assembly



POINTER PRESSURE GAUGES

Micro pressure Gauge & Imported test Hose with Test Point Connector High & Low Pressure Glycerin filled Pressure Gauge in Different Range like 2½" Dial & 4" Dial, 6" Dial with Panel Mounting Back & Bottom Mounted Pressure Gauge From 0 to 1000kg/cm², Pressure with Calibration Certificate. Minimize Hose for line pressure Testing.

Hydraulic Components

- Radial Piston Pump
- Hand Pump (Hand Operated)
- Check Valves (NRV)
- Modular Valve
- Direction Control Valves (Hand Lever Operated)
- Direction Control Valves (Solenoid Operated)



SAE FLANGES

All type of mounting flange for Pumps, Single & Two pieces in high pressure & low pressure as per SAE Standard.

NYLON GEAR COUPLING

All type of size available like M19, M28, M38, M48, M65

HYDRAULIC ACCESSORIES



ACCESSORIES FOR SYSTEM & GENERAL PURPOSE

- Flow control Valves
- Ball Valves (Material - S.S., M.S., C.I.)
- Quick Release Coupling (Material - S.S., M.S.) QRC
- Shut off Valves
- Needle Valves in BSP & NPT Thread from 1/4" to 2"
- High Pressure Ball Valve up to 5000 PSI

HYDRAULIC PIPING ACCESSORIES

All type of Accessories for M.S. Piping & Machine Tools Equipments like

- PIPE CLAMPS - Heavy Duty, Light Duty (ID 6 mm to 140 mm)
- COPPER WASHER - up to 1/8" to 2" is Standard Size.
- DOWTY SEAL - BSP and Matric Standard Size
- SEAMLESS PIPE - Various size 6mm to 50 mm



PTFE TEFLON HOSE

Application : Steam, Chemical, Solvents etc.
 Tube : Smooth inside core in PTFE or Extruded White Teflon
 Reinforcement/Cover : One braid in stainless steel AISI - 304 wire
 Temp. Range : -60 C + 260 C

S.S Corrugated flexible Hoses :

Material in AISI 304, 321, 316 L Conforming to international quality Standard
 Temp. Range : -200 C to + 700 C
 Working Pressure : 3 BAR to 10 BAR

POLYHOSE HIGH PRESSURE HOSE.

The PolyHose provides thermoplastic hoses and tubes. These are applied in a variety of different markets such as standard hydraulics, ultra high pressure applications, and oil & gas industry.

MINIMIZE HOSE PIPE AND COUPLING

Micro Bore Test Hose - ID 2mm to 630 BAR
 Minimize coupling in all standard size.



We are Authorised Dealer of

Polyhose®

Providing Flexible Solutions Globally



HYDRAULIC GEAR PUMP



BELL HOUSING & L BRACKET



MOBILE CONTROL VALVE



BUTTERFLY VALVE



HYDRAULIC MOTOR



HAMMER UNION



HYDRAULIC POWER PACK

We are also trading in standard brands of hydraulic Equipments



Google Page



f chhayahydraulics
@ chhaya_hydraulics

Office :

Shed No. 135, Maheshwari Industrial Estate,
Behind Mohan Vikas Manda,
Sahibaug, Ahmedabad-380004, Gujarat - INDIA

Mfg. Unit :

Shed No. 5, Pushpak Industrial Estate,
Opp. Bank of Baroda, Odhav - Indore Highway,
opp. Kathwada GIDC, Odhav, Ahmedabad-382430
Gujarat - INDIA

M.: +91 98794 17940, +91 94261 71628
Web : www.chhayahydraulics.com

E-mail : Chhayahydraulics@gmail.com