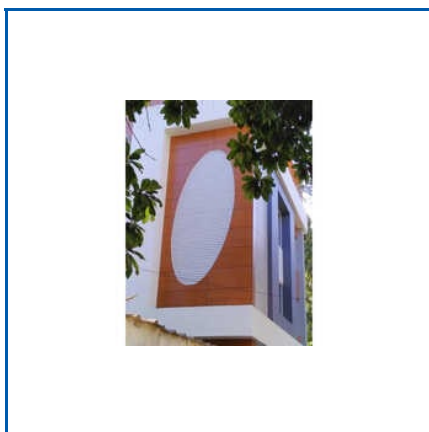


# HPL Exterior Wall Cladding

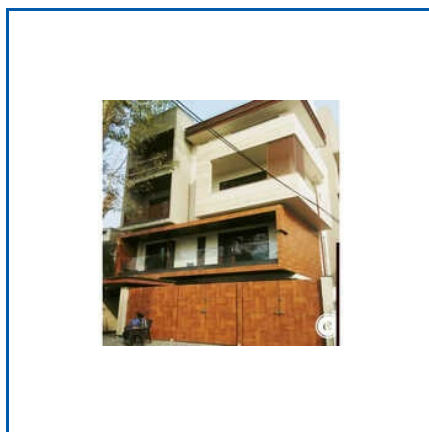
Your Partner In All Right Choices



12 mm Acrylic Sheet, 12 mm HPL Exterior Wall Cladding, 12 mm HPL Toilet Cubicle Partition, 12 mm Rectangular HPL Toilet Cubicle Partition, 12 mm Shoe Box Toilet Cubicle Partition, 3D Wall Cladding Services, 6 mm Acrylic Solid Surface, 6 mm Exterior HPL Cladding, 6 mm HPL Exterior Wall Cladding, 6 mm HPL Interior Wall Cladding, 7 Mm HPL Wall Cladding, Building HPL Wall Cladding Service, Ceramic Wall Cladding Services, Commercial HPL Wall Cladding Service, Exterior Wall Cladding Services, etc.



**6 MM HPL EXTERIOR WALL CLADDING**



**6 MM EXTERIOR HPL CLADDING**



**7 MM HPL WALL CLADDING**



## About Us

SVP Designs And Architrade is a renowned company in the markets for wall cladding products and services. We started in 2022 and since then have been adding a variety to our portfolio and meeting the market requirements. As a trader, we are extensively loved by customers for our HPL Interior Wall Cladding, Rectangular HPL Toilet Cubicle, Acrylic Solid Sheet, Nylon Toilet Cubicle Partition, and Acrylic Solid Surface. We are also famous for our Exterior Wall Cladding Services, Ceramic Wall Cladding Services, Weatherboard Wall Cladding Services, and solutions as Residential Interior Decorators.

Wall claddings that are extensively trending these days are basically a decorative covering to the surface of wall to improve the aesthetic appearance. Our goal at SVP Designs and Architrade is to have the walls appear to be constructed of a different material than what is really used. We bring the new texture and uniqueness to a piece of your kitchen or living area with a simple and hassle-free method of wall cladding. So what are you waiting for? Transform your walls from boring to amazing. They are, after all, the ideal medium on which to convey your artistic inclinations. Reach out to us right now!





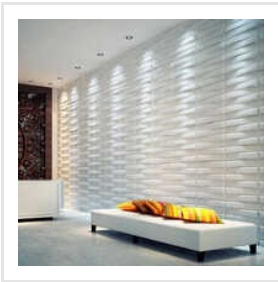
## Key Facts

<b>No of Staff</b>	10
<b>Year of Establishment</b>	2003
<b>OEM Service Provided</b>	No

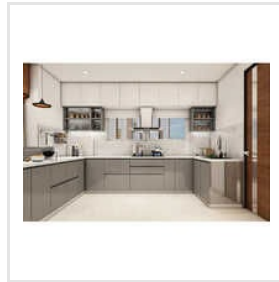
**Our Products**



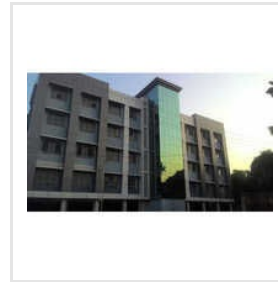
**HPL Compact Toilet Cubicle Partition**



**3D Wall Cladding Services**



**Modular Kitchen Interior Decorator**



**6 Mm HPL Interior Wall Cladding**



**12 Mm HPL Exterior Wall Cladding**



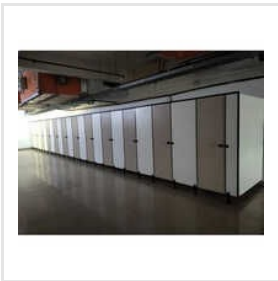
**HPL Exterior Wall Cladding**



**12 Mm Shoe Box Toilet Cubicle Partition**



**6 Mm Acrylic Solid Surface**



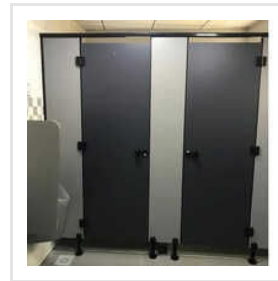
**Modular Toilet Cubicle Partition**



**Rectangular HPL Toilet Cubicle Partition**



**Nylon Toilet Cubicle Partition**



**12 Mm Rectangular HPL Toilet Cubicle Partition**



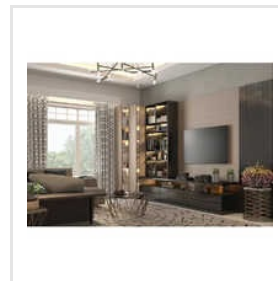
**12 Mm HPL Toilet Cubicle Partition**



**12 Mm Acrylic Sheet**



**White Acrylic Sheet**



**Residential Interior Decorator Services**



ADDRESS

**3/81, Gopal Illam, Sathya Nagar,  
2nd Cross Street, Manapakkam,  
Tamil Nadu, India (600089).**



EMAIL

**svpdesignsindia@gmail.com**



MOBILE

**+918056191007**



WEBSITE

**www.svpdesignsindia.com**

KEY PERSONNEL

**Dhana Balaji Parthasarathy**

(PROPRIETOR)