

# histology slides, Models & Skeletons

Dbios

New Additions

## USA Imported Human Microscopic Histology Slides (Set of 100)

New Additions

- C01 Simple squamous Epithelium sec.
- C02 Simple Cuboidal Epithelium sec.
- C03 Simple Columna Epithelium sec.
- C04 Columna Pseudo stratified ciliated epithelium
- C05 Stratified squamous Epithelium sec
- C06 Transitional Epithelium sec
- C07 Ciliated Epithelium
- C08 Epidermis from human mouth
- C09 Glandular Epithelium sec
- C10 Loose Connective Tissue w.m
- C11 Dense Connective Tissue w.m
- C12 Adipose Tissues sec.
- C13 Hyaline Cartilage sec.
- C14 Elastic Cartilage sec.
- C15 Fibro Cartilage sec.
- C16 Human Chromosome Normal Female w.m
- C17 Human Chromosome Normal Male w.m
- C18 Medulla oblongata sec
- C19 Red marrow smear
- C20 Smooth Muscle Teased Preparation w.m
- C21 Blood smear
- C22 Hair
- C23 Smooth Muscle l.s and c.s
- C24 Skeletal Muscle l.s and c.s
- C25 Cardiac Muscle sec
- C26 Spinal Cord l.s and c.s
- C27 Sciatic nerve l.s.
- C28 Motor neuron w.m
- C29 Motor Nerve Endings w.m
- C30 Tongue l.s. show filiform papilla
- C31 Esophagus sec.
- C32 Trachea sec.
- C33 Stomach sec.

- C34 Stomach fundic portion sec.
- C35 Stomach Cardiac Region sec.
- C36 Stomach Pyloric Region sec.
- C37 Small Intestine c.s
- C38 Duodenum sec.
- C39 Jejunum sec.
- C40 Ileum c.s. show villi and goblet cells
- C41 Appendix sec.
- C42 Large Intestine sec
- C43 Colon sec.
- C44 Rectum sec.
- C45 Pancreas sec.
- C46 Spleen sec.
- C47 Liver sec.
- C48 Gall Bladder sec
- C49 Fat layer
- C50 Fibroblast
- C51 Nerve cells
- C52 Brochiole
- C53 Lung sec
- C54 Artery sec
- C55 Vein sec
- C56 Large artery sec
- C57 Large vein sec
- C58 Heart l.s. whole
- C59 Kidney l.s
- C60 Kidney with Blood Vessel Injected sec.
- C61 Ureter sec.
- C62 Ovary sec.
- C63 Placenta Human sec.
- C64 Human Sperm smear
- C65 Epididymis sec
- C66 Prostate Gland Human sec.

- C67 Fallopian Tube sec
- C68 Penis c.s
- C69 Cervix sec.
- C70 Thyroid Gland sec
- C71 Thymus Gland sec
- C72 Mammary gland sec
- C73 Adrenal Gland sec
- C74 Lymph Node sec
- C75 Salivary gland c.s.
- C76 Cerebrum sec
- C77 Cerebellum sec
- C78 Pituitary gland c.s.
- C79 Tendon teased c.s.
- C80 Eye section
- C81 Eyeball sec
- C82 Human Skin sec. show Thick Cornified Layer
- C83 Human Skin sec. Through sweat Gland
- C84 Human Skin sec. Through Hair Follicle
- C85 White fibrous tissue
- C86 Mucous tissue, umbilical cord
- C87 Decalcified bone c.s.
- C88 Infant developing bone section
- C89 Developing membrane bone
- C90 Muscle-tendon junction l.s.
- C91 Muscle spindle
- C92 Nerve bundle
- C93 Sympathetic ganglion
- C94 Motor cortex section
- C95 Sensor cortex
- C96 Cerebellar cortex
- C97 Palatine tonsil
- C98 Thin skin from human palm section
- C99 Finger nail section
- C100 Stomach -duodenal junction l.s.



SLIDES

New Additions

## German Imported Human Microscopic Histology Slides (Set of 62)

New Additions

- HHS01 Adipose Tissue
- HHS02 Hyaline Cartilage
- HHS03 Elastic Cartilage
- HHS04 White Fibro Cartilage
- HHS05 Bone T.S.
- HHS06 Bone L.S.
- HHS07 Skeletal Muscle
- HHS08 Smooth Muscle
- HHS09 Cardiac Muscle
- HHS10 Peripheral Nerve T.S.
- HHS11 Peripheral Nerve L.S.
- HHS12 Sensory Ganglion
- HHS13 Dorsal root ganglion
- HHS14 Elastic artery
- HHS15 Muscular Artery
- HHS16 Large vein
- HHS17 Small vein
- HHS18 Lymph node
- HHS19 Thymus
- HHS20 Palatine tonsil
- HHS21 Spleen

- HHS22 Tongue filiform and fungiform papillae
- HHS23 Tongue circumvallate papillae
- HHS24 Oesophagus
- HHS25 Stomach-fundus
- HHS26 Stomach-pylorus
- HHS27 Duodenum
- HHS28 Jejunum
- HHS29 Ileum
- HHS30 Large Intestine
- HHS31 Appendix
- HHS32 Liver
- HHS33 Gall Bladder
- HHS34 Pancreas
- HHS35 Salivary Gland-serous
- HHS36 Salivary Gland-mixed
- HHS37 Salivary Gland-mucous
- HHS38 Trachea
- HHS39 Lung
- HHS40 Thyroid with parathyroid
- HHS41 Pituitary gland
- HHS42 Adrenal Gland

- HHS43 Kidney
- HHS44 Ureter
- HHS45 Urinary bladder
- HHS46 Testis
- HHS47 epididymis
- HHS48 Vas deferens
- HHS49 Prostate Gland
- HHS50 Ovary
- HHS51 Uterus
- HHS52 Uterine tube
- HHS53 Thin Skin
- HHS54 Thick Skin
- HHS55 Cornea
- HHS56 Retina
- HHS57 Spinal Cord
- HHS58 Cerebrum
- HHS59 Cerebellum
- HHS60 Placenta
- HHS61 Umbilical Cord
- HHS62 Mammary Gland



SLIDES

# Models

Dbios

**IMP287** MICRO anatomy  
Artery and Vein



**IMP 282** MICRO  
Anatomy Liver



**IMP 284** MICRO Anatomy  
Kidney



**IMP 286** MICRO Anatomy  
Digestive System



**IMP281** MICRO anatomy  
Bone Structure



**IMP 289** Micro Anatomy  
Muscle Fibre



**IMP 285** MICRO Anatomy Eye



**IMP 4281A** Bone Tissue Model  
Bone structure integrity intuitive  
structure, obvious



## Full skeleton complete (Loose Bones)



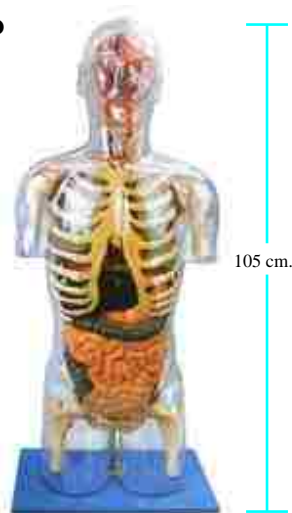
### All Skeleton Parts are Near to Original

- Skull With Mandible 3parts
- Ribs (L&R)
- Sternum
- Humerus, Radius, Ulna (Left)
- Humerus, Radius, Ulna (Right)
- Pelvis (L&R)
- Sacrum
- Femur, Tibia, Fibula (Left)
- Femur, Tibia, Fibula (Right)
- Vertebral Column (Disarticulated)
- Cervical Vertebrae (Set of 7)
- Thoracic Vertebrae (Set of 12)
- Lumbar Vertebrae (Set of 5)
- Hand Disarticulated (L&R)
- Foot Disarticulated (L&R)

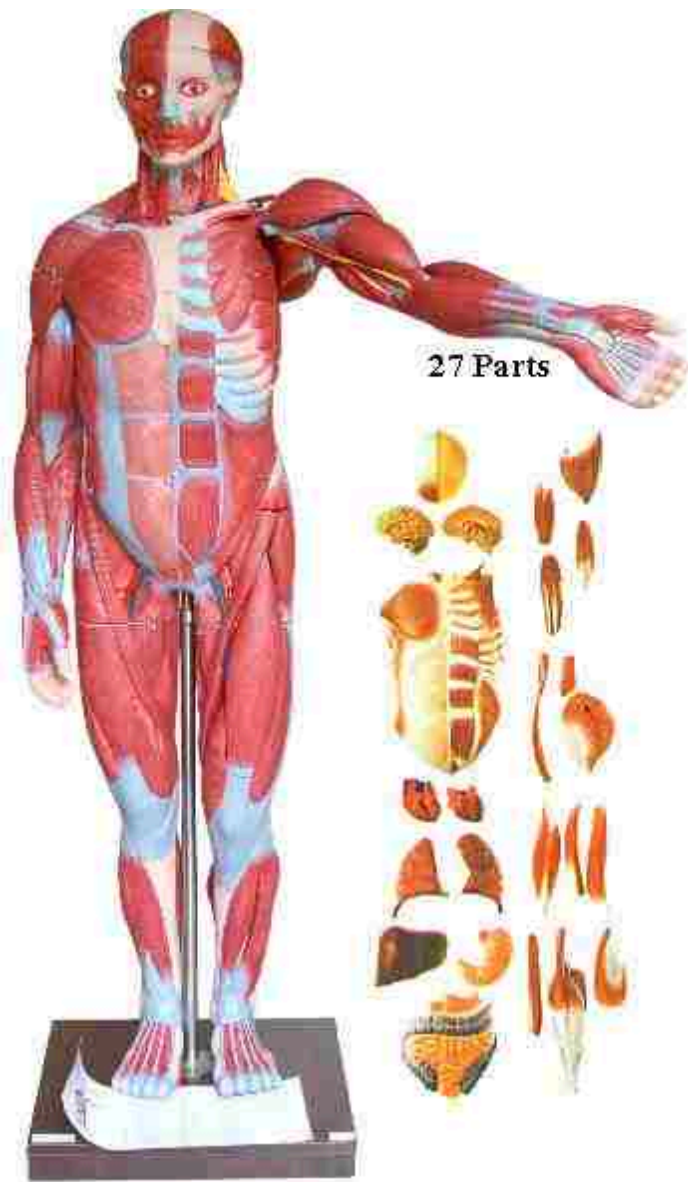
# Models

Dbios

**IMP 3** Transparent Torso With Internal Organs



**IMP 2A** Muscles of Male with Internal organs



**IMP 2** Human Body Muscles with Internal organs



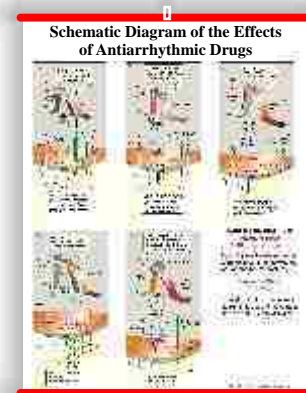
Also available Charts, Models & Slides  
**Pharmacology Department**

Pharmacology Models 15  
Charts 600  
Scientist Portraits 55

**Corticosteroids**



**HIV Infection**

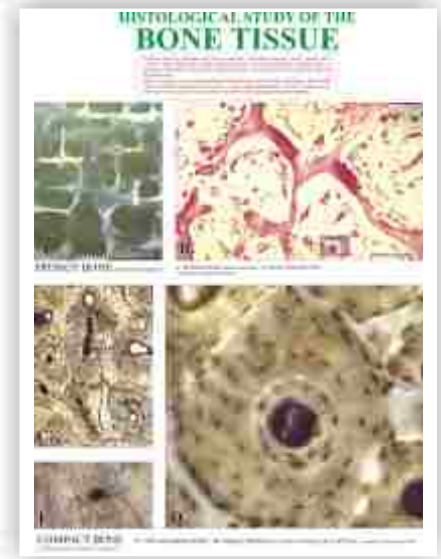




## HISTOLOGY CHARTS on board

Size 20"X26"

- W 1 FEMALE REPRODUCTION
- W 2 MALE REPRODUCTION
- W 3 DIGESTIVE SYSTEM
- W 4 URINARY SYSTEM
- W 5 INTEGUMENTARY SYSTEM
- W 6 RESPIRATORY SYSTEM
- W 7 EPITHELIAL TISSUE WALL
- W 8 NERVOUS TISSUE
- W 9 BONE TISSUE
- W 10 CONNECTIVE TISSUE
- W 11 BLOOD CELL
- W 12 MUSCLE TISSUE
- W 26 HUMAN MICRO ANATOMY POSTER (27"X38")



**W 9**

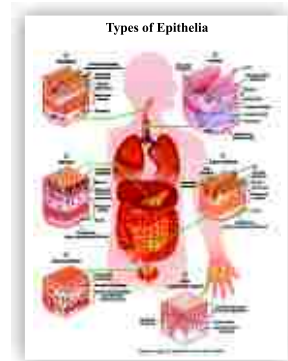
Size : 20"X26" Laminated and attached with durable strips

OR Laminated and Framed on Board

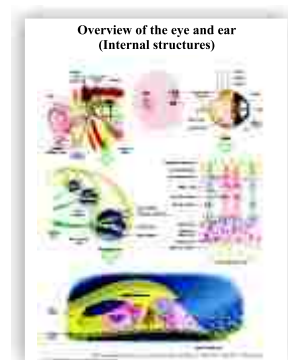
All Charts Also Available Size: 30"X40" Laminated & Fitted with Plastic Rollers

### Rarest Collection of Histological Overview

- HO 01 Composite Illustration of A Cell And Its Cytoplasmic organelles
- HO 02 Different Types of Epithelia In Selected organs
- HO 03 Composite Illustration of Loose Connective Tissue with Its Predominant Cells and Fibers
- HO 04 Endochondral ossification, Illustrating the Progressive Stages of Bone Formation(from Cartilage Model to Bone) and Including the Histology of A Section of Formed Bone
- HO 05 Differentiation of A Pluripotential Hemopoietic Stem Into the Myeloid Stem Cell Line and Lymphoid Stem Cell Line During Hemopoiesis
- HO 06 Microscopic Illustrations of the Three Types of Muscles: Skeletal, Cardiac, and Smooth
- HO 07 The central nervous system is composed of the brain and spinal cord. A section of the brain and spinal cord is illustrated here with their protective connective tissue layers called meninges (dura mater, arachoid, and pia mater)
- HO 08 The peripheral nervous system is composed of the cranial and spinal nerves. A cross - section of the spinal cord is illustrated here with the characteristic features of the motor neuron and a cross-section of a peripheral nerve. Also illustrated are types of neurons located in different ganglia and organs outside of the central nervous system
- HO 09 Comparison (transverse sections) of a muscular artery, large vein, and the three types of capillaries
- HO 10 Location and distribution of the lymphoid organs and lymphatic channels in the body. Internal contents of the lymph node and spleen are illustrated in greater detail
- HO 11 Comparison between thin skin in the arm and thick skin in the palm, including contents of the connective tissue dermis
- HO 12 Salivary glands and their connections to the oral cavity, morphology of the tongue in cross - section, and added detail of a taste bud
- HO 13 Different types of acini (serous acini, mucous acini, and serous demilunes), different duct types (intercalated, striated, and interlobular), and myoepithelial cells of a salivary gland
- HO 14 Detailed illustration comparing the structural differences of the four layers ( mucosa, submucosa, muscularis externa, and adventitia/serosa) in the wall of the esophagus and stomach
- HO 15 Structural differences between the wall of the small intestine and large intestine, with emphasis on different layers of the wall.
- HO 16 A section from the liver and the pancreas is illustrated, with emphasis on the liver lobule and the duct system of the exocrine pancreas.
- HO 17 A section of the lung illustrated in three dimensions and in transverse section, with a emphasis on the internal structure of the respiratory bronchiole and alveolar cells
- HO 18 A sagittal section of the kidney showing the cortex and medulla, with blood vessels and the excretory ducts, including the pelvis and the ureter and a histologic comparison of the blood vessels, the different tubules of the nephron, and the collection ducts



**HO-2**



**HO 10**

**Size : 20"X26" Laminated and attached with durable strips  
OR  
Laminated and Framed on Board**

**All Charts Also Available Size: 30"x40" Laminated & Fitted with Plastic Rollers**

- HO 19 Hypothalamus and hypophysis (pituitary gland). A section of the hypothalamus and hypophysis illustrates the neuronal, axonal, and the vascular connections between these two organs. Also illustrated are the major target cells, tissues, and organs of the hormones that are produced by both the anterior and posterior pituitary gland (hypophysis)
- HO 20 The structural organization and general location in the body of the thyroid gland, parathyroid gland, and adrenal gland are illustrated
- HO 21 Location of testes and accessory male reproductive organs, with emphasis on the internal organization of the testis, different phases of the spermiogenesis, and structure of a mature sperm
- HO 22 Anatomy of the female reproductive organs, with emphasis on the ovary and the sequence of changes during follicular development, culminating in ovulation and corpus luteum formation. Changes in the uterine wall during the menstrual cycle are correlated with pituitary hormones and ovarian functions
- HO 23 Internal structures of the eye and the ear, with emphasis on cells that constitute the photosensitive retinal and the hearing organ of corti

**Microscopic views of Tissues & Organs**

**Epithelial Tissues**

- HS 01 Simple Squamous Epithelium: Peritoneal Mesothelium Surrounding Small Intestine [transverse Section]  
Different Epithelial Types In the Kidney Cortex
- HS 02 Simple Columnar Epithelium : Stomach Surface
- HS 03 Simple Columnar Epithelium on Villi in Small Intestine : cells with Striated Borders(Microvilli) and Goblet Cells
- HS 04 Pseudostratified Columnar Ciliated Epithelium: Respiratoy Passages (Trachea)
- HS 05 Transitional Epithelium: Bladder (contracted)
- HS 06 Stratified Squamous Nonkeratinized Epithelium: Esophagus & Keratinized Epithelium: Palm of the Hand
- HS 07 Stratified Cuboidal Epithelium: Excretory Duct In Salivary Gland

**Glandular Tissue**

- HS 08 Unbranched Simple Tubular Exocrine glands: intestinal glands  
Simple Branched Tubular Exocrine Glands: Gastric Glands
- HS 09 Coiled Tubular Exocrine Glands: Sweat Glands & Compound Acinar (exocrine) Gland: Mammary Gland

**Connective Tissue**

- HS 10 Loose Connective Tissue
- HS 11 Individual Cells of Connective Tissue
- HS 12 Loose Connective Tissue & Dense Irregular and Loose Irregular Connective Tissue (Elastin Stain)
- HS 13 Loose Irregular and Dense Irregular Connective Tissue  
Dense Irregular Connective Tissue and Adipose Tissue
- HS 14 Dense Regular Connective Tissue: tendon (Longitudinal Section)  
Dense Regular Connective Tissue: tendon (Longitudinal Section)
- HS 15 Dense Regular Connective Tissue: tendon (Transverse Section)  
Adipose Tissue in the Intestine

**Cartilage & Bone**

**Cartilage**

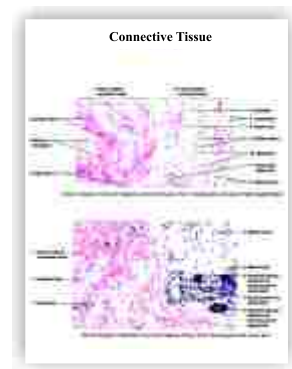
- HS 17 Fetal Hyaline Cartilage & Hyaline Cartilage and Surrounding Structures : Trachea
- HS 18 Cells and Matrix of Mature Hyaline Cartilage & Hyaline Cartilage: Developing Bone

**Bone**

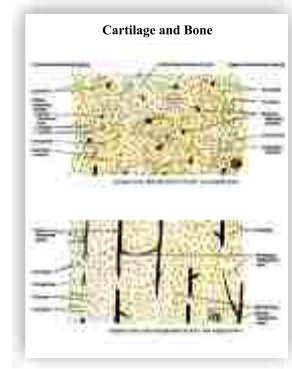
- HS 19 Endochondral Ossification: development of Along Bone (panoramic View, longitudinal Section)
- HS 20 Endochondral Ossification: zone of Ossification
- HS 21 Cancellous Bone With Trabeculae and Marrow Cavities : sternum (Decalcified Bone, Transverse Section)  
Cancellous Bone: Sternum (Decalcified Bone, Transverse Section)
- HS 22 Compact Bone, Dried (transverse Section)  
Compact Bone, Dried (longitudinal Section)
- HS 23 Compact Bone, Dried: An Osteon (Transverse Section)

**Muscle Tissue**

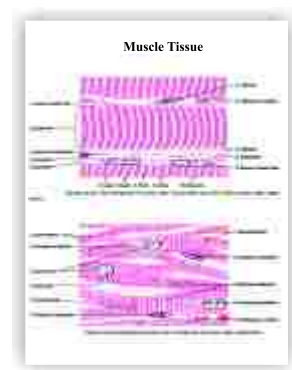
- HS 24 Smooth Muscle Layers of the Small Intestine(transverse and Longitudinal Sections)  
Smooth Muscle : wall of the Small Intestine (transverse and Longitudinal Sections)
- HS 25 Skeletal (striated) Muscles of the Tongue (longitudinal and Transverse Sections)  
Skeletal (striated) Muscles of the Tongue (longitudinal Section)
- HS 26 Skeletal Muscle and Motor End Plates
- HS 27 Cardiac Muscle & Cardiac Muscle (longitudinal Section)
- HS 28 Skeletal Muscle and Muscle Spindle (transverse Section)
- HS 29 Skeletal Muscle (longitudinal Section) & Cardiac Muscle (longitudinal Section)



HS-13



HS-22



HS-29

Size : 20"X26" Laminated and attached with durable strips

OR Laminated and Framed on Board

All Charts Also Available Size: 30"x40" Laminated & Fitted with Plastic Rollers

## Nervous Tissue

### Central Nervous System (brain & Spinal Cord)

- HS 30 Spinal Cord: Midthoracic Region (transverse Section)  
Spinal Cord:anterior Gray Horn, motor Neurons, and adjacent anterior white matter
- HS 31 Spinal Cord:anterior Gray Horn, Motor Neurons, and Adjacent Anterior White Matter  
Motor Neurons:anterior Horn of the Spinal Cord
- HS 32 Neurofibrils and Motor Neurons, in the gray matter of Anterior Horn of Spinal Cord  
Anterior Gray Horn Of The Spinal Cord: multipolar Motor Neurons, axons and Neuroglial Cells
- HS 33 Cerebral Cortex:gray Matter
- HS 34 Layer V of the Cerebral Cortex & Cerebellum (transverse Section)
- HS 35 Cerebellar Cortex: molecular Layer, purkinje Cell Layer, and Granular Cell Layer  
Fibrous Astrocytes and Capillary In the Brain
- HS 36 Oligodendrocytes of the Brain & Microglia of the Brain

### Peripheral Nervous System

- HS 37 Peripheral Nerves and Blood Vessels (Transverse Section)  
Myelinated Nerve Fibers (longitudinal and Transverse Sections)
- HS 38 Cells and (pseudo) Unipolar Neurons of A Dorsal Root Ganglion  
Multipolar Neurons, Surrounding Cells, and Nerve Fibers of A Sympathetic Ganglion  
Dorsal Root Ganglion: unipolar Neurons and Surrounding Cells

### Circulatory System

- HS 39 Blood And Lymphatic Vessels In The Connective Tissue
- HS 40 Muscular Artery And Vein (transverse Section) & Artery And Vein In Connective Tissue of the Vas Deferens
- HS 41 Wall of An Elastic Artery: aorta (Transverse Section) & Wall of A Large Vein: portal Vein (Transverse Section)

### Lymphoid System

- HS 42 Lymph Node (Panoramic View)
- HS 43 Lymph Node Capsule, Cortex, and Medulla (Sectional View)
- HS 44 Cortex and Medulla of A Lymph Node & Lymph Node: Subcortical Sinus and Lymphatic Nodule
- HS 45 Lymph Node: Subcapsular Sinus, Trabecular Sinus, and Supporting Reticular Fibers  
Thymus Gland (Panoramic View)
- HS 46 Thymus Gland (Sectional View) & Cortex and Medulla of A Thymus Gland
- HS 47 Spleen (Panoramic View) & Red and White Pulp of the Spleen

### Integumentary System

- HS 48 Thin Skin :epidermis and Contents of the Dermis
- HS 49 Skin: Scalp & Pacinian Corpuscles In the Dermis of Thick Skin (transverse and Longitudinal Sections)
- HS 50 Thick Skin of the Palm, Superficial Cell Layers, and Melanin Pigments  
Thick Skin : Epidermis and Superficial Cell Layers

### Digestive System

#### Oral Cavity And Salivary Glands

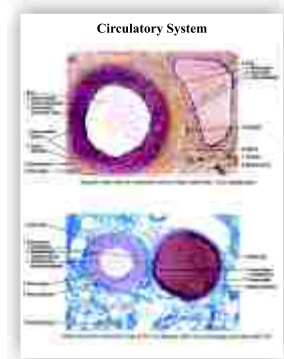
- HS 51 Anterior Region Of The Tongue: Apex (longitudinal Section)  
Tongue: Circumvallate Papilla (cross Section)
- HS 52 Tongue: Taste Buds  
Posterior Tongue:behind Circumvallate Papilla And Near The Lingual Tonsil (longitudinal Section)
- HS 53 Salivary Gland: Parotid
- HS 54 Salivary Gland : Submandibular
- HS 55 Salivary Gland : Sublingual
- HS 56 Serous Salivary Gland: Parotid & Mixed Salivary Gland: Sublingual

#### Esophagus And Stomach

- HS 57 Wall of The Upper Esophagus (Transverse Section)
- HS 58 Esophageal-stomach Junction & Stomach: Fundus and Body Regions (Transverse Section)
- HS 59 Stomach: Mucosa of the Fundus and Body (Transverse Section)
- HS 60 Stomach: Mucosa of the Pyloric Region

#### Small And Large Intestine

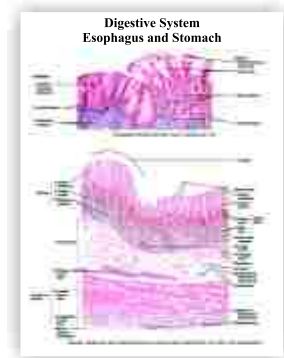
- HS 61 Small Intestine : Duodenum (Longitudinal Section)  
Small Intestine : Jejunum and Ileum (Transverse Section)
- HS 62 Small Intestine : Ileum with lymphatic nodules (Peyer's Patches) & Small Intestine : Villi
- HS 63 Intestinal Glands With Paneth Cells and Enteroendocrine Cells  
Large Intestine: Colon Wall (Transverse Section)
- HS 64 Appendix (panoramic View, Transverse Section) & Rectum (panoramic View, Transverse Section)



HS 40



HS-47



HS-58



Size : 20"X26" Laminated and attached with durable strips

OR Laminated and Framed on Board

All Charts Also Available Size: 30"x40" Laminated & Fitted with Plastic Rollers

**Liver , Gallbladder, And Pancreas**

- HS 65 Pig's Liver (panoramic View, Transverse Section) & Primate Liver (panoramic View, Transverse Section)  
 HS 66 Bovine Liver: Liver Lobule (transverse Section)  
 Hepatic Liver (liver) Lobule (sectional View, Transverse Section)  
 Bile Canaliculi In A Liver Lobule (osmic Acid Preparation)  
 HS 67 Wall Of The Gallbladder & Pancreas (sectional View)  
 HS 68 Pancreatic Islet & Pancreatic Islet (special Preparation)  
 Pancreas: Endocrine (pancreatic Islet And Exocrine Regions)

**Respiratory System**

- HS 69 Epiglottis (longitudinal Section)  
 HS 70 Trachea (panoramic View, Transverse Section) & Tracheal Wall (sectional View)  
 HS 71 Lung (panoramic View)  
 HS 72 Intrapulmonary Bronchus (Transverse Section) & Terminal Bronchiole (Transverse Section)  
 HS 73 Respiratory Bronchiole , Alveolar Duct, And Lung Alveoli & Alveolar Walls And Alveolar Cells

**Urinary System**

- HS 74 Kidney Cortex and Upper Medulla  
 HS 75 Kidney Cortex : Juxtaglomerular Apparatus  
 Kidney: Renal Corpuscle and Juxtaglomerular Apparatus  
 HS 76 Ureter (transverse Section)  
 Kidney Medulla : Papillary Region (transverse Section)  
 HS 77 Section Of A Ureter Wall (transverse Section)  
 Ureter (transverse Section)  
 HS 78 Urinary Bladder : Wall (transverse Section)  
 Urinary Bladder : Mucosa (transverse Section)

**Endocrine System**

**Hypophysis (Pituitary Gland)**

- HS 79 Hypophysis (panoramic View, Saggital Section)  
 Hypophysis: Sections of Pars Distalis , Pars Intermedia, and Pars Nervosa

**Thyroid Gland, Parathroid Glands, and Adrenal Gland**

- HS 80 Thyroid Gland: Canine (general View)  
 Thyroid Gland Follicles: Canine (sectional View)  
 HS 81 Adrenal (suprarenal ) Gland

**Male Reproductive System**

**Testis, Excurrent Ducts, Ducts Epididymis, and Ductus (vas) Deferens**

- HS 82 Testis (sectional View)  
 Primate Testis : Spermatogenesis In Seminiferous Tubules (transverse Section)  
 HS 83 Primate Testis: Stages of Spermatogenesis  
 Ductuli Efferentes and Tubules of Ductus Epididymis  
 HS 84 Tubules of the Ductus Epididymis (transverse Section)  
 Ductus (vas) Deferens (transverse Section)  
 Accessory Reproductive Glands: Seminal Vesicles, Prostate Gland, Bulbourethral Glands, And Penis  
 HS 85 Prostate Gland and Prostatic Urethra  
 Prostate Gland: Glandular Acini and Prostatic Concretions

**Female Reproductive System**

**Ovaries, Uterine Tubes, And Uterus**

- HS 86 Ovary: Dog (panoramic View)  
 HS 87 Ovary: Ovarian Cortex and Primary and Primordial Follicles  
 HS 88 Uterine Tube:ampulla (panoramic View, Transverse Section)  
 Uterine Tube:mucosal Folds (early Proliferative Phase)  
 HS 89 Uterus: Proliferative (follicular) Phase  
 HS 90 Uterus:secretory (luteal) Phase  
 HS 91 Uterus:menstrual Phase

**Cervix, Vagina, Placenta, and Mammary Glands**

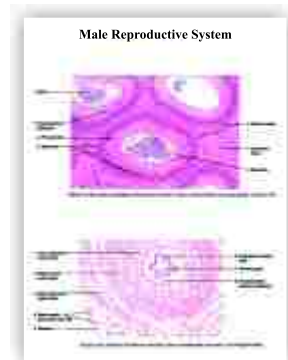
- HS 92 Vagina (longitudinal Section)  
 Glycogen In Human Vaginal Epithelium  
 HS 93 Vagina: Surface Epithelium  
 Placenta At 5 (panoramic View)  
 HS 94 Inactive Mammary Gland  
 Mammary Gland During Proliferation and Early Pregnancy

**Organs of Special Senses**

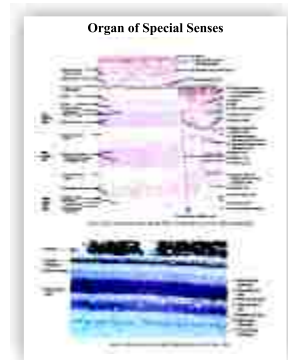
- HS 95 Eyelid (Sagittal Section)  
 HS 96 Lacrimal Gland & Cornea (Transverse Section)  
 HS 97 Whole Eye (Sagittal Section) & Retina,choroid, and Sclera (panoramic View)  
 HS 98 Layers of the Choroid and Retina (detail) & Eye: Layers of Retina and Choroid  
 HS 99 Inner Ear: Cochlear Duct (scala Media) & Inner Ear; Cochlear Duct and the Organ of Corti



HS 72



HS 84



HS 98