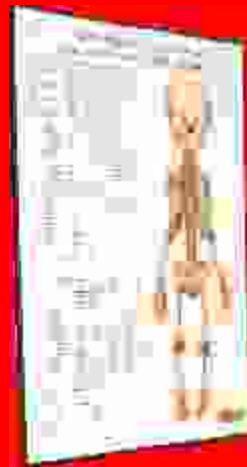


Dbios

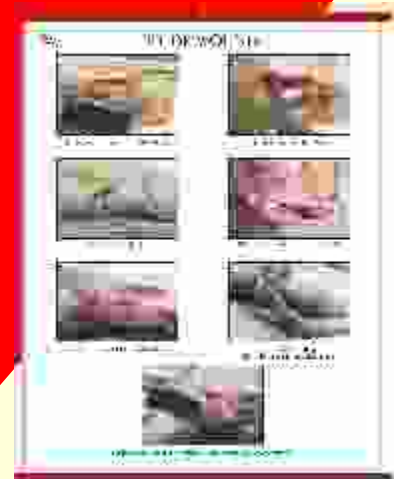
w.e.f. Nov. 15, 2018



17 MEDICAL PROFESSIONALS



115 CHARTS
WITH PLASTIC STRIPS
or NU-WOOD BOARD



58 DIGITAL
PHOTOGRAPHS CHARTS
WITH PLASTIC STRIPS
or NU-WOOD BOARD

FORENSIC MEDICINE

Charts, Models, Slides & Instruments



115 CHARTS
WITH PLASTIC STRIPS
or NU-WOOD BOARD



95 MODELS



SLIDES set of 10

Forensic Models

FORENSIC MODELS MADE FROM GLASS FIBER-UNBREAKABLE MATERIAL AND WASHABLE. THESE MODELS ARE DESIGNED TO FUNCTION AS REFERENCE MATERIAL TO HELP YOU INCREASE YOUR KNOWLEDGE ABOUT MEDICAL JURISPRUDENCE AND TOXICOLOGY.

IDENTIFICATION

- DFM 02 Tattoo Marks over the forearm.
 DFM 03 Types of Finger Prints: Set of four models of (a) Arch, (b) Loop, (c) Whorl and (d) composite types.
 DFM 04 Occupational Marks: Bakers, Tailor, Lead line.

POSTMORTEM CHANGES

- DFM 07 Cadaveric Spasm (Hair).
 DFM 7A Marbling of skin at end of 1st week
 DFM 08A Putrefaction: Showing gaseous swelling, eye ball, Tongue, protrude giving, frog like appearances.
 DFM 09 Adipocere Forearm (Stiffing & Swelling Fats).
 DFM 09A Adipocere: Head & Neck showing the adipocere formation in subcutaneous fat, skin softened and rotted away.
 DFM 09B Decomposed body cuticle has peeled off at many places.
 DFM 10A Postmortem Staining portion of Body.
 DFM 10B Colour Changes in Bruise set of 2 models.
 DFM 11 Mummification: Soft part shrivel up, But remains natural appearance.
 DFM 11A Postmortem Lividity on the Back of the Body

INJURIES

- DFM 12 Abrasions: Knee (Fell on Road).
 DFM 12A Abrasion: on Arm by Teeth.
 DFM 12B Throttling :- Strangulation by throttling
 DFM 12C Abrasion on face
 DFM 13 Blunt Injuries: Models of face showing ragged splint wounds across brow crushing the skull with clubbed stick.
 DFM 13A Tramline contusion on back
 DFM 14 Bruise: Portion of face showing the swelling of the left eye-brow following fall.
 DFM 14A Bruise Shoe Heel.
 DFM 14B Bruises on Hand :- Showing multiple Bruises
 DFM 14C Multiple Bruises on Foot
 DFM 17A Head Injury Skull (**Road Accident**).
 DFM 18 **Incised wound**: Model of neck showing the tentative **incised wounds** of the throat of suicidal character too superficial to cause harm.
 DFM 18A Suicidal Incised wound of forearm
 DFM 19A Clean cut wound :- Showing Injury with sharp weapon
 DFM 20 Stab Wound (Abdomen).
 DFM 20A Laceration of Scalp on Head
 DFM 20B Multiple Lacerated wounds by Blast on Back
 DFM 20C Perforated wound on Head
 DFM 20D Ruptured spleen (Splenic trauma)
 DFM 20E Ruptured Liver
 DFM 21B Defense wound :- Multiple Incised wound in line
 DFM 21D Homicidal Wounds of Throat: Model of head and neck showing the **Deep incised wounds** of the throat.
 DFM 22 Exit Hole in Skull by Bullet: (i) Internal and (ii) External views of exit hole made in skull vault by bullet passing up, through brain.
 DFM 22A Infanticide: Model of head of a child which was beaten on a wooden floor causing splitting of skin and abrasions, on cheek.
 DFM 23A Puncture Wound on Chest: Perforated entry wound.

UNBREAKABLE FIBRE GLASS

Forensic Models



UNBREAKABLE FIBRE GLASS

- DFM 24 Homicidal Gun Shot Wound: Model of Fore head showing a shot gun wound of near discharge in case of Homicide.
- DFM 25 Entry and Exit Gun Shot Wound
- DFM 26 Healing of Wound: Set of 5 models of stages of (1) first 12 hours, (2) 24 hours, (3) 36 hours, (4) 48 hours, (5) 3-5 days .
- DFM 27 Head Injury Depressed Frontal Fracture.
- DFM 29 Nose Bitten of by Teeth.
- DFM 31 Electric Burn: Hand showing the caused electric burn by live wire contact.
- DFM 31A Electric Burn: Portion of body depicting electric burn caused by repeated application of live two pin plug.

BURNS

- DFM 32 Scalds: Hand fell in Boiling ghee.
- DFM 33A Lysol Burns: Model of face depicting lysol burns of the lips running down over the chin.
- DFM 33B Burns of face from a kerosene Oil lamp.
- DFM 34 Degrees of Burns: Set of four models showing degrees.

VIOLENT ASPHYXIAL DEATHS

- DFM 35 Asphyxial Petechiae: Model of face depicting asphyxia by suffocation following stuffing of the mouth and throat, minute asphyxial petechiae are present over the brow and face.
- DFM 35A Smothering :- Multiple Bruises on the inner Aspect of upper limb
- DFM 36A **Homicidal Hanging:** Showing Head & Neck Strangled by cane wood round the neck
- DFM 38 **Strangulation:** Showing Ligature Mark. A case of Suicidal
- DFM 38A **Hanging Double Loop :** Self Strangulation Head and neck depicting Double loop of wire-rope wound twice round the neck.

EXHUMATION

- DFM 41 Drowning:- Ante-Mortem Drowning
- DFM 41A Washerman's foot:- Wrinkling can be seen in both ante-mortem and postmortem drowning
- DFM 41B Washerman's fHand:- Wrinkling can be seen in both ante-mortem and postmortem drowning

POISONS & POISONING

- DFM 43A Stomach poisoning by nitric Acid
- DFM 43B Stomach Poisoning by Sulphuric Acid.
- DFM 43C Stomach Poisoning by Oxalic Acid.
- DFM 43D Arsenical Poisoning: Portion of body showing melanosis pigmentation of skin in chorionic arsenical poisoning.
- DFM 43E Stomach Poisoning: Caustic Potash.
- DFM 43F Stomach Poisoning: Lysol.
- DFM 43G Stomach Poisoning by Hydrochloric Acid.
- DFM 43H Stomach poisoning by copper sulphate.

RAPE MODEL

- DFM 44 Rape: Head and neck of a girl with attempted strangulation marks on neck.
- DFM 44A Types of Hymens: Set of six models of (1) Semilunar or crescentic, (2) Fimbriate, (3) Circular, (4) Septate, (5) Two lateral lacerations and (6) Circular torn in several places-of hymens.
- DFM 47 The Typical Breast of a Virgin.
- DFM 47A The Slightly pendulous breast of recently married woman.

Also available Charts, Models & Slides

Anatomy Department

Human Anatomy Models 150

Embryology Models 80

Histology Models 15

Charts:- Anatomy, Embryology & Histology 600

Slides :- Histology USA Set of 100

Histology German Set of 62

Skeleton:- Articulated & Loose Bones

Scientist Portraits 90



UNBREAKABLE FIBRE GLASS

NEW ADDITION



DFM 43B



DFM 18 (3D)

- DFM 75 The wound in jaw.
- DFM 76 The wound in abdomen with small intension evisceration.
- DFM 77 Opened fracture of right hand (including parenchyma laceration, fracture and bone tissue exposure).
- DFM 78 Burns in left forearm 1,2,3rd Degree
- DFM 79 Diabetic foot

3D MODELS ON STAND

- DFM 12 (3D) Abrasions: Knee (Fell on Road).
- DFM 12B (3D) Throttling :- Strangulation by throttling
- DFM 12C (3D) Abrasion on face
- DFM 14B (3D) Bruises on Hand :- Showing multiple Bruises
- DFM 14C (3D) Multiple Bruises on Foot
- DFM 18(3D) Suicidal incised wound on throat
- DFM 19A (3D) Clean cut wound :- Showing Injury with sharp weapon
- DFM 20A (3D) Laceration of Scalp on Head
- DFM 20C (3D) Perforated wound on Head
- DFM 21(3D) Entry & Exit wound on skull by bullet
- DFM 21B (3D) Defence wound :- Multiple Incised wound in line
- DFM 24(3D) Entry & Exit wound on Head by Revolver, case of suicidal
- DFM 25A(3D) Entry & Exit wound on chest by Gun distance app. 5 yards
- DFM 31 (3D) Electric Burn: Hand showing the caused electric burn by live wire contact.
- DFM 35A (3D) Smothering :- Multiple Bruises on the inner Aspect of upper limb
- DFM 41 (3D) Drowning:- Anti-Mortem Drowning
- DFM 41A (3D) Washerman's foot:- can be seen in both ante-mortem and postmortem drowning

Bio-Chemistry Department

Bio-Chemistry Models 15
Charts 252
Scientist Portraits 75



DBCM 17 Protein Structure

Size : 20"X26"

Laminated & Fitted with plastic strips
Laminated & Mounted on Board

58 Digital Photographs



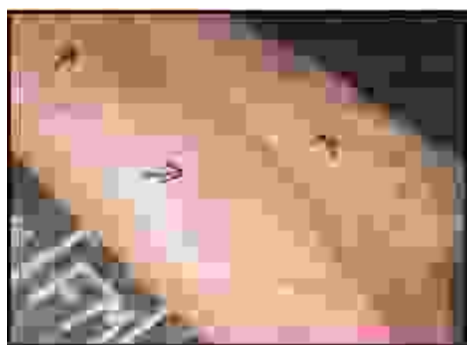
GRAZED ABRASION



ADIPOCERE



BITE MARK



MULTIPLE BRUISES ON BACK

FCH 01.	ABRASION:- GRAZED AND IMPRINT
FCH01A	ABRASION:- MULTIPLE
FCH01B	ABRASION:- CONTUSED
FCH01C	ABRASION:- PRESSURE
FCH01D	ABRASION:- PARTIALLY HEALED
FCH01E	ABRASION:- ANT BITE MARK
FCH 02.	ABRUS PRECATORIUS
FCH 03.	ADIPOCERE
FCH 04.	BITE MARK
FCH 05.	BRUISE
FCH 06.	BURNS: EPIDERMAL AND DERMAL
FCH 06A	BURNS:- GRANULATION TISSUE
FCH 06B	BURNS:- CHARRED BODY
FCH 07.	CALTROPS
FCH 08.	COMMINUTED FRACTURE OF SKULL
FCH 09.	DEFENSE WOUND
FCH 10.	DHATURA
FCH 11.	DHATURA, CHILLY SEEDS
FCH 12.	DIFFERENT AGES OF BRUISES
FCH 13.	ELECTRIC BURN MARK
FCH 14.	EXTRA CRANIAL HEMORRHAGE
FCH 14A	DEPRESSED COMMINUTED FRACTURE
FCH 14B	BURST FRACTURE
FCH 14C	PONTINE HEMORRHAGES
FCH 14D	SUBDURAL HEMORRHAGES
FCH 15.	EXTRA DURAL HAEMATOMA
FCH 16.	FIRE ARM INJURY
FCH 17.	FRACTURE SKULL
FCH 18.	HANGING
FCH 18A	INCOMPLETE ATYPICAL HANGING
FCH 19.	HOMICIDAL, SUICIDAL CUT THROAT INJURY
FCH 20.	HUMAN BLOOD, FROG BLOOD
FCH 21.	HUMAN HAIR, ANIMAL HAIR
FCH 22.	HUMAN SEMEN
FCH 23.	INCISED WOUND
FCH 23A	CHOP WOUND
FCH 23B	STAB WOUND
FCH 24.	LACERATED WOUND
FCH 24A	MULTIPLE LACERATION
FCH 25.	MAGGOTS
FCH 26.	MECHANISM OF INJURIES IN ROAD TRAFFIC ACCIDENTS
FCH 27.	PETECHIA HEMORRHAGES IN WHITE MATTER
FCH 28.	PHYSIOLOGY OF RIGOR MORTIS
FCH 29.	POSTMORTEM ARTIFACTS
FCH 30.	POSTMORTEM LIVIDITY
FACH 30A	POSTMORTEM BLISTERS
FCH 31.	PUTREFACTION BLOATING FEATURES ALONG WITH MAGGOTS
FCH 31A	PUTREFACTION DISCOLORATION
FCH 31B	PUTREFACTION :- MARBLING OF SKIN
FCH 32.	RICINUS COMMUNIS
FCH 33.	SKELETONIZED
FCH 34.	SNAKES
FCH 35.	STAB WOUNDS
FCH 36.	STRANGULATION
FCH 37.	STRYCHNOS NUX VOMICA
FCH 38.	SUBARACHNOID HEMATOMA
FCH 39.	SUBDURAL HEMATOMA
FCH 40.	TRAUMATIC ASPHYXIA
FCH 41.	CADAVERIC SPASM
FCH 42.	STARVATION
FCH 43.	DROWNING
FCH 44.	TYPES OF FINGER PRINT

Size : 20"X26"

Laminated & Fitted with plastic strips
Laminated & Mounted on Board

All Charts Also Available Size: 30"x40"

Laminated & Fitted with Plastic Rollers

LEGAL PROCEDURES IN MEDICO - LEGAL CASES

- CH 778 TYPE OF MEDICAL EVIDENCES
 CH 778A IPCS PERTAINING TO MEDICAL PRACTICE
 CH 779A THE DECLARATION OF GENEVA
 CH 779B CONDUCT & DUTIES OF DOCTOR IN THE WITNESS BOX
 CH 779C NEW DUTIES OF A MEDICAL OFFICER IN CASE OF SUSPECTED POISONING
 CH 779D NEW CONSUMER PROTECTION ACT (C.P.A.)
 CH 781. { DIFFERENCE BETWEEN POLICE & MAGISTRATE / CORNER'S INQUEST } IN
 CH 781C { DIFFERENCE BETWEEN CORNER'S & JUDICIAL MAGISTRATE'S COURT } ONE CHART
 CH 781C DIFFICULTIES IN DETECTION OF CRIME IN INDIA
 CH 782. DIFFERENCE BETWEEN DYING DECLARATION & DYING DEPOSITION

IDENTIFICATION OF AN INDIVIDUAL

- CH 783. MORPHOLOGICAL FEATURES OF THE THREE PRIMARY RACES CAUCASIANS, MONGOLIANS & NEGROES
 CH 783A USES OF DNA FINGERPRINTING IN IDENTIFICATION
 CH 784. IMPORTANT DATA FOR IDENTIFICATION OF PERSON
 CH 785. DETERMINATION OF SEX FROM PHYSICAL / MORPHOLOGICAL FEATURES (PRIMARY & SECONDARY SEX FEATURES)
 CH 784A CEPHALIC INDEX
 CH 785A EXTERNAL MORPHOLOGICAL FEATURES IN MALE AND FEMALE
 CH 785B TYPES OF INTERSEX
 CH 786. AGES OF ERUPTION OF TEETH
 CH 787. DIFFERENCE BETWEEN TEMPORARY & PERMANENT TEETH
 CH 787A INTERNATIONAL SYSTEM OF NUMBERING TEETH
 CH 788. SEX DIFFERENCE FEATURES IN SKULL
 CH 788A RACIAL DIFFERENCE IN SKULL
 CH 788B DIFFERENCES BETWEEN HINDU & MOHAMMEDAN FEMALE
 CH 788C DIFFERENCES BETWEEN HINDU & MOHAMMEDAN MALE
 CH 790. SEX DIFFERENCE FEATURES IN MANDIBLE
 CH 791. SEX DIFFERENCE FEATURES IN SACRUM
 CH 791A DIFFERENTIATING FEATURES IN ARTICULATED PELVIS (HIP BONE) & SACRUM
 CH 792. SEX DIFFERENTIATING FEATURES IN ARTICULATED PELVIS
 CH 792A SEX DIFFERENTIATING FEATURES IN FEMUR
 CH 793. DIFFERENCE BETWEEN MANDIBLE IN INFANCY, ADULT & OLD AGE
 CH 794. DIFFERENCE BETWEEN HUMAN & ANIMAL HAIR
 CH 795. ESTIMATION OF AGE
 CH 795A SKELETAL MATURATION AND GROWTH

IMPORTANCE OF AGE

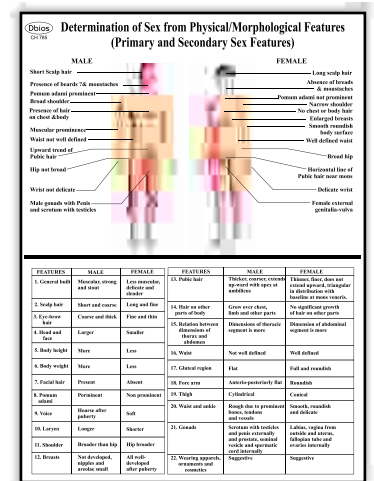
- CH 797. MEDICO - LEGAL IMPORTANCE OF AGE
 CH 798. AGE OF THE FOETUS
 CH 799. USE OF DNA IDENTIFICATION & OTHER FORENSIC PRACTICES
 CH 799A AGES OF APPEARANCE AND FUSION OF OSSIFICATION CENTERS OF DIFFERENT BONES

IDENTIFICATION FROM TRACE SUBSTANCES & THEIR OTHER EVIDENT VALUES

- CH 800. INTERPRETATION OF ABO GROUPING TEST FOR UN KNOWN CELL & SERUM
 CH 800A ANTIGEN AND ANTIBODIES OF ABO GROUP
 CH 801. ABO PHENOTYPE & GENOTYPE RELATIONSHIP BETWEEN PARENTS & CHILDREN
 CH 802. MN PHENOTYPE & GENOTYPE RELATIONSHIP BETWEEN PARENTS & CHILDREN

DEATH AND POST MORTEM CHANGES

- CH 803. DIFFERENCE BETWEEN BRUISE & POSTMORTEM STAINING
 CH 803A ENUMERATING CAUSES OF SUDDEN DEATH
 CH 803B ENUMERATING SIGNS OF DEATH
 CH 803C TESTS TO DETERMINE STOPPAGE OF CIRCULATION IN CASES OF DEATH
 CH 803D CHRONOLOGICAL SEQUENCE OF PUTREFACTIVE CHANGES OCCURRING IN THE TEMPERATE REGIONS
 CH 803E PUTREFACTIVE CHANGES OCCURRING AT DIFFERENT PERIODS OF TIME IN A BODY SUBMERGED IN WATER
 CH 803F GORDON'S CLASSIFICATION OF DEATH
 CH 803G POSTMORTEM CHANGES IN MYOCARDIAL INFECTION
 CH 804. DIFFERENCE BETWEEN CONGESTION & POSTMORTEM STAINING IN ORGANS
 CH 804A TIME SINCE DEATH FROM POSTMORTEM CHANGES
 CH 805. DIFFERENCE BETWEEN ANTI-MORTEM & POST MORTEM WOUND
 CH 805A PROCESS OF DECOMPOSITION (PUTREFACTION)
 CH 805B MUTILATED BODIES
 CH 805C DETAILS OF VISCERA AND OTHER ARTERIES
 CH 805D THE POSTMORTEM FATE OF HUMAN REMAINS
 CH 805E DIFFERENCE BETWEEN RIGOR MORTIS AND CADAVERIC SPASM



CH 785

Size : 20"x26"

Laminated & Fitted with plastic strips

Laminated & Mounted on Board

All Charts Also Available Size: 30"x40"

Laminated & Fitted with Plastic Rollers

LEGAL CONSIDERATION & TYPES INJURIES

- CH 806. CLASSIFICATION OF WOUNDS
 CH 807. CLASSIFICATION ACCORDING TO SEVERITY OF THE INJURY
 (A) SIMPLE B) GRIEVOUS OR DANGEROUS HURT
 CH 807A DIFFERENCES BETWEEN ANTEMORTEM AND POSTMORTEM ABRASIONS

MECHANICAL INJURIES

- CH 808. DIFFERENCE BETWEEN BRUISES & LESIONS PRODUCED BY CHEMICALS
 CH 808A CLASSIFICATION OF INJURIES CAUSED BY MECHANICAL VIOLENCE
 CH 809. DIFFERENCE BETWEEN BRUISES & CONGESTION
 CH 810. DIFFERENCE BETWEEN SUICIDAL & HOMICIDAL CUT THROAT
 CH 811. DIFFERENCE BETWEEN WOUNDS OF ENTRANCE & EXIT
 CH 812. SHOT GUN INJURIES
 CH 812A FIRE ARM
 CH 812B TYPES OF GUNS
 CH 812C PRESSURE IN CHAMBER, MUZZLE VELOCITY, SPINNING REVOLUTION OF PROJECTILE,
 STRIKING RANGE AND EFFECTIVE RANGE OF PROJECTILES
 CH 812D PROPERTIES OF DIFFERENT EXPLOSIVES

THERMAL INJURIES

- CH 813. RULE OF NINE (DIFFERENCE BETWEEN BURNS & SCALDS)
 CH 813A DIFFERENCES BETWEEN ANTE-MORTEM BURNS & POST- MORTEM BURNS

VIOLENT ASPHYXIA DEATHS

- CH 814. DIFFERENCE BETWEEN HANGING & STRANGULATION

FORENSIC TOXICOLOGY

- CH 815. CLASSIFICATION OF POISONS
 { PART-1 ACCORDING TO THE SITE & MODE OF ACTION }
 { PART-2 ACCORDING TO THE MOTIVE OR NATURE OF USE } IN ONE CHART
 CH 815A TREATMENT OF COMMON POISONS
 CH 815B MATERIAL/ VISCERA & BODY FLUIDS TO BE PRESERVED IN CASE OF SUSPECTED POISONING
 CH 815C SEVEN STAGES OR 7 D'S OF ACUTE ALCOHOLIC INTOXICATION
 CH 815D CLASSIFICATION OF POISONS -I
 CH 815E CLASSIFICATION OF POISONS -II

METALLIC CHEMICAL IRRITANTS

- CH816. DIFFERENCE BETWEEN ACUTE ARSENIC POISONING & CHOLERA /GASTRO-ENTERITIS

SPINAL POISONS

- CH 817. DIFFERENCE BETWEEN STRYCHNINE POISONING & TETANUS N.H.R.C. ON
 AUTOPSY PROTOCOL
 CH 819. POSTMORTEM DETECTION OF TORTURE

PREGNANCY & DELIVERY

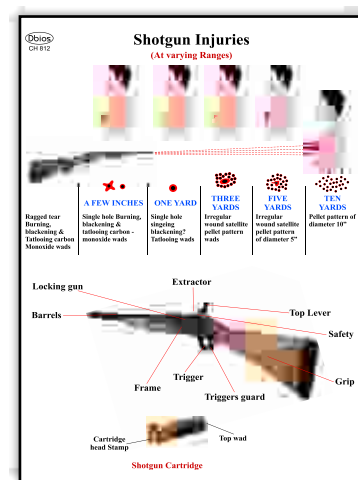
- CH 820. HEIGHT & FUNDUS OF UTERUS AT DIFFERENT PERIODS OF PREGNANCY
 CH 820A SIGN OF PREGNANCY IN THE LIVING
 CH 821. DIFFERENCE MEASUREMENTS OF UTERUS AFTER DELIVERY
 CH 821A DIFFERENCE BETWEEN VIRGINITY AND DEFLORATION
 CH 821B CLASSIFICATION OF SEXUAL OFFENCES
 CH 821C DEFINITIONS OF DIFFERENT SEXUAL OFFENCES E.G. RAPE, INCEST, SODOMY, TRIBADISM & BESTIALITY
 CH 821D METHODS ADOPTED FOR INDUCING CRIMINAL ABORTIONS
 CH 821E DIFFERENCES BETWEEN ALIVE BORN AND DEAD BORN CHILD
 CH 821F DIFFERENT BETWEEN NATURAL AND CRIMINAL ABORTION

ANIMAL IRRITANTS

- CH 823. TYPES OF SNAKES NON POISONOUS SNAKE,
 PYTHON, BANDED KRAIT, COMMON KRAIT,
 KING COBRA, RUSSELL VIPER
 CH 824. DIFFERENCE BETWEEN COBRA & VIPER
 FATAL DOSE & AMOUNT INJECTED IN ONE
 BITE
 CH 824A SCORPION
 CH 824B BEES AND WASPS
 CH 824C CANTHARIDES (SPANISH FLY)

FORENSIC PSYCHIATRY

- CH 825. DIFFERENCE BETWEEN TRUE INSANITY & FEIGNED INSANITY
 CH 826. ENUMERATING OUT-LINE CAUSED OF STERILITY IN MALES AND FEMALES
 CH 827. EFFECTS OF NARCOTICS
 CH 828. DIFFERENCE BETWEEN RESPIRED AND UNRESPIRED LUNGS
 CH 828A DIFFERENCE IN LUNGS BEFORE & AFTER RESPIRATION
 NEW 1 CIVIL AND CRIMINAL NEGLIGENCE
 NEW 2 DIFFERENT TYPES OF SKULL BASED ON CEPHALIC
 NEW 3 PROFESSIONAL NEGLIGENCE AND INFAMOUS CONDUCT
 NEW 4 SIGNS OF PREGNANCY
 NEW 5 DIFFERENCE BETWEEN PROFESSIONAL NEGLIGENCE & PROFESSIONAL MISCONDUCT



CH 812

Drug Charts

Size 21"x17"

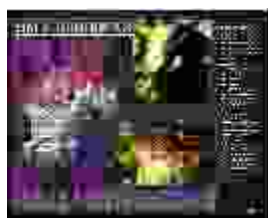
Laminated & Mounted on Board

- Hallucinogens
- Inhalants

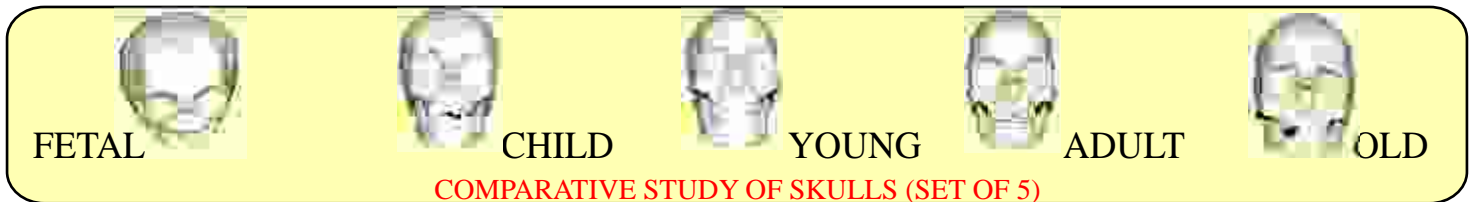
- Marijuana
- Narcotics

- Pcp (Phencyclidine)
- Sedatives

- Steroids
- Stimulants



- IMP.130** IMPORTED VERTEBRAL COLUMN WITH STAND
Flexible spine, with pelvis, occipital bone, vertebral artery and dorsal herniated disc between the 3rd and 4th lumbar vertebrae. **Size : 29" tall.**
- IMP. 131** IMPORTED VERTEBRAL COLUMN WITH FEMORAL HEADS & STAND
Same as IMP. 130 with addition of movable femoral heads **size 32" tall**
- A-86** IMPORTED ADULT LEG BONE WITH THREE JOINTS & LIGAMENTS
- A-87** IMPORTED ADULT ARM BONE WITH THREE JOINTS & LIGAMENTS
- IMP 339** SKELETON OF MALE PELVIS (**LENGTH 24CM. , WIDTH 17CM. , HEIGHT 15CM.)**
- IMP 340** SKELETON OF FEMALE PELVIS (**LENGTH 20CM., WIDTH 15CM. , HEIGHT 19CM.)**
- Imp. 97 A** FETAL SKULL
- Imp. 260 A** COMPARATIVE STUDY OF LOWER JAW (SET OF 5)
- Imp. 260 B** COMPARATIVE STUDY OF TEETH (SET OF 3)
- Imp. 260 C** COMPARATIVE STUDY OF SKULL (SET OF 5)



Am 103

Am103. DISARTICULATED HUMAN SKELETON WITH SKULL LIFE-SIZE, DISARTICULATED ADULT SKELETON INCLUDES 3-PART SKULL, LEFT HAND AND LEFT FOOT ON WIRE.

AM 103A DISARTICULATED MUSCULAR SKELETON



IMP- 126

IMPORTED BUDGET BUCKY SKELETON : This economical, life-size articulated adult plasdetailtic skeleton is ideal for teaching the basics of anatomy when intricate textural nuances of the bone are not required. The arms and legs are removable for study. Features nerve branches, vertebral artery, and herniated lumbar disk. Skull included movable jaw, cut calvarium, suture lines, and 3 removable lower teeth. Mounted ona stand. Complete with dust cover and skeletal system

IMP.-127

IMPORTED MR. SUPERSKELETON : The world's most complete skeleton, featuring joint ligaments, a flexible spine with nerve endings and full indication of muscle origins and insertions painted on one-half of the body.



Am 127

All Skeleton Parts are Near to Original

Skull With Mandible 3parts
 Ribs (L&R)
 Sternum
 Humerus, Radius, Ulna (Left)
 Humerus, Radius, Ulna (Right)
 Pelvis (L&R)
 Sacrum
 Femur, Tibia, Fibula (Left)

Femur, Tibia, Fibula (Right)
 Vertebral Column (Disarticulated)
 Cervical Vertebrae (Set of 7)
 Thoracic Vertebrae (Set of 12)
 Lumbar Vertebrae (Set of 5)
 Hand Disarticulated (L&R)
 Foot Disarticulated (L&R)

IMP126A
Fetus Skeleton Model

Female
IMP.- 126 F

IMP. 126A



WEAPON SET OF 100 Rs. 36000/-



POISON SET OF 100 Rs. 36000/-

**RECTANGULAR
 SPECIMEN
 JARS**

**(ASK FOR
 SIZES & RATES)**

Dbios **Pioneers of Forensic**

Size : 20"X26" Laminated & Mounted on Board

FP 1	Alphonse Bertillon (1853-1914)	FP 9	Clea Koff
FP 2	Mathieu Joseph Bonaventure Orfila (1787-1853)	FP 10	Cyrill Wecht
FP 3	Alec Jeffreys	FP 11	Henry Lee
FP 4	Edmond Locard	FP 12	Michael Baden
FP 5	Joseph Bell	FP 13	Alexandre Beaudoin
FP 6	Sara Bisel	FP 14	Brian E. Dalrymple
FP 7	William Bass	FP 15	Paul L. Kirk
FP 8	William Maples	FP 16	Forensic History - I
		FP 17	Forensic History - II



FMT MICROSCOPIC SLIDES SET OF 10 - RS

C-1	Blood Human (sm) - Mammal (sm)	C-6	Fingerprints - Arch, Loop, whorl (w.m)
C-2	Bloodstained Textile Fibers - Dyed Vs Blood Stained	C-7	Hair - Human & Animal (w.m)
C-3	Fibers - Nylon, Dacron, & Rayon Fibers (w.m)	C-8	Skin - Human Three Types (sect)
C-4	Cheek Cells - Human & Animal (sm)	C-9	Spermatozoa
C-5	DNA in Cells (sect)	C-10	Diatoms

FORENSIC INSTRUMENTS AS PER MCI

- | | |
|--|---|
| <ol style="list-style-type: none"> 1. Anthropology Rod 2. Skin Fold Caliper 3. Sliding Caliper 4. Spreading Caliper 5. Goniometer (Set of 3) 6. Anthropometric Board Wooden 7. Anthropometric Board Metal 8. Weighing machine, dial type human 9. Equipment for reporting height 10. Balance chemical 11. Balance, single pan for weighing foetus 12. Weighing machine for Weighing dead bodies 13. Weighing machine for organs 14. Metal scale to measure upto 7 ft. 15. Steel tape roll 16. Autopsy table 17. Styker autopsy saw, with accessories 18. Autopsy saw electric wih 2 blade indian 19. Hacksaw 20. Dissection sets, (Postmortem) 21. Rib. Shears, right and left 22. Microscope student 2 OBJECTIVE 23. Microscope Binocular, research 24. Stopwatch Digital | <ol style="list-style-type: none"> 25. X'ray view box 4 IN 1 LED LIGHT 26. View Box 2 in 1 LED LIGHT 27. B.P. Apparatus DIGITAL 28. Automatic tissue processing machine 29. Microtome with knife 30. Hot plates 31. L.Modes 32. Leather Straps 33. Parafin Bath Embedding 34. Slide Warming Table 35. Stone Carbarandon 36. Water bath (Tissue Flowing) 37. Distilation plant STEEL 38. Brain knife 39. BLOck Holder 40. Digital Spectrometer 41. Digital PH meter 42. Electric Auto slide projector 43. Glass cutting Pencil 44. Hand Set heat Sealer 45. Spectroscope Lens with adjustable slit 46. Craniometer cubic 47. Mandibulometer 48. Goniometer |
|--|---|