

# **(Dbios) NURSING AIDS**

## Charts, Models & Manikins

### Fundamental Lab

Manikin - 12  
CPR - 12  
CPR With AED -1

### Clinical Skill Lab

Suturing,  
I.V. Training,  
B.P Arm - 10

### MCH

Maternal &  
Infant Training  
Model - 57  
Charts - 45



### Paediatric Lab

Models - 10  
Charts - 62

### Community & Nutrition Lab

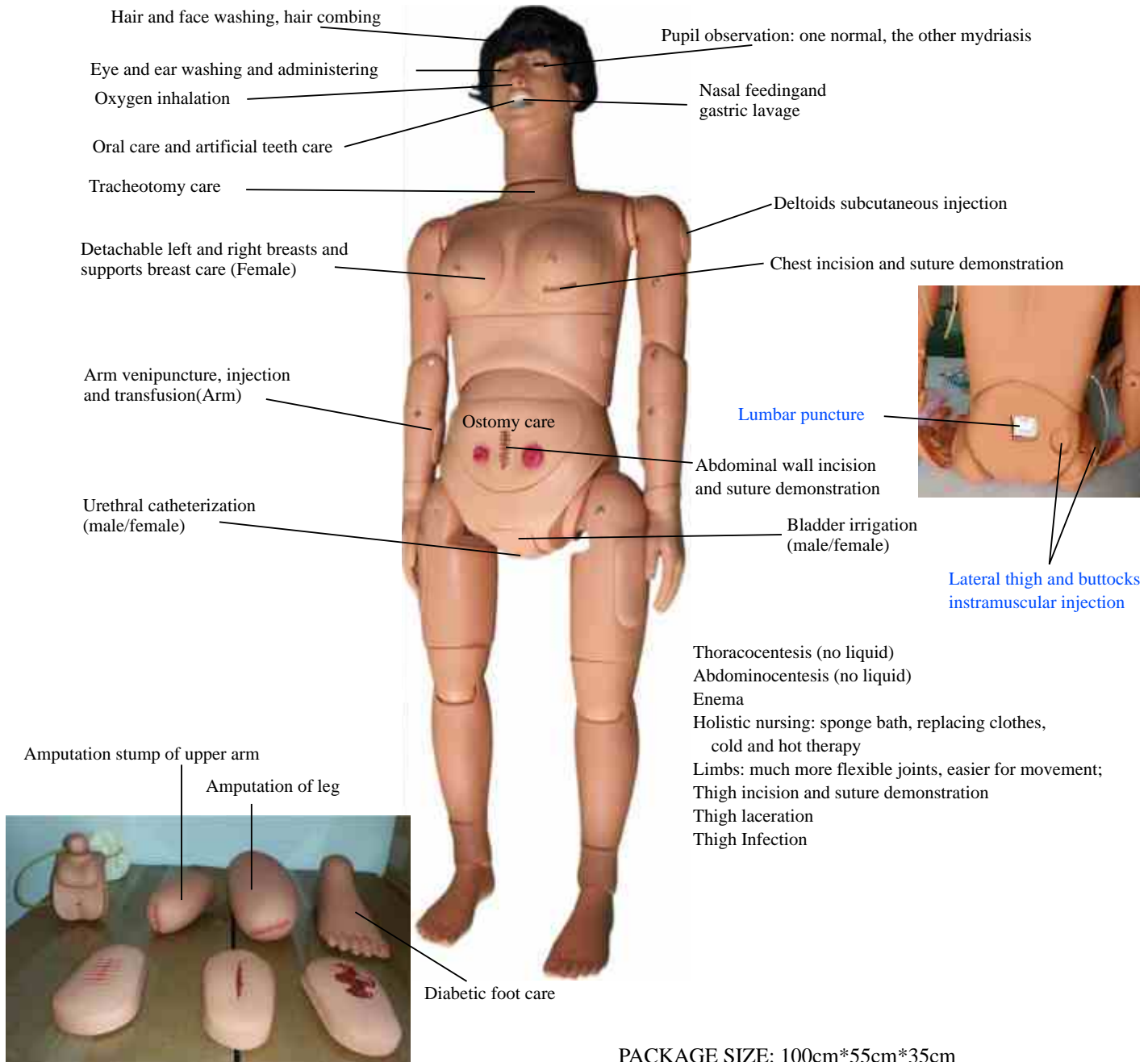
Models - 20  
Charts - 60

### Anatomy & Physiology

Models - 35  
Charts - 108

### Dbios-001 Multi-functional Nursing Manikin(Female) with breast care

Venipuncture, injection, blood transfusion (Arm),trauma modules for evaluation and care



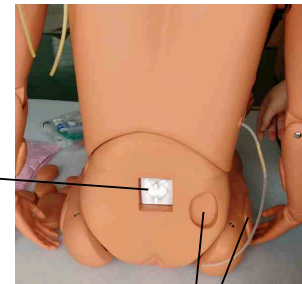
PACKAGE SIZE: 100cm\*55cm\*35cm

G.W.: 25KG

**Dbios-002 Female Nursing Manikin with interchangeable male & female chest , male/female interchangeable organs & breast cancers for breast examination , Venipuncture, injection, blood transfusion (Arm)**



Lumbar puncture



Lateral thigh and buttocks intramuscular injection

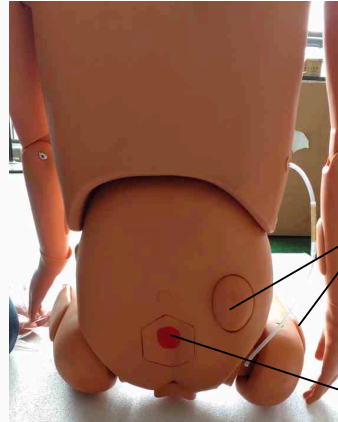
#### Features

- Hair and face washing
- Eye and ear washing and administering
- Oral care and artificial teeth care
- Endotracheal intubation (teach demonstration only, not for training)
- Tracheotomy care
- Oxygen inhalation
- Nasal feeding and gastric lavage
- Pupil observation: one normal, the other mydriasis
- Ostomy
- Lumbar puncture (no liquid, with removable skin cover)
- Thoracocentesis (no liquid)
- Abdominocentesis (no liquid)
- Venipuncture, injection, blood transfusion (Arm)
- Deltoid subcutaneous injection
- Vastuslateralis injection and buttocks intramuscular injection
- Female/male urethral catheterization
- Female/male bladder irrigation
- Enema
- Holistic nursing: sponge bath, replacing clothes
- Detachable left and right breasts and supports breast care (Female only)

PACKAGE SIZE: 100cm\*55cm\*35cm

G.W.: 18KG

**Dbios-003 Basic Nursing Manikin** Venipuncture, injection, blood transfusion (Arm), Ulcer modules (bedsore), MALE/FEMALE INTERCHANGE ORGANS



Vastuslateralis injection and  
buttocks intramuscular injection

Ulcer modules (bedsore)

atures

Hair and face washing

Eye and ear washing and administering

Oral care and artificial teeth care

Tracheal intubation via mouth(teach demonstration only, not for training)

Postoperative care for tracheotomy

Oxygen inhalation

Nasal feedingand gastric lavage

Pupil observation: one normal, the other mydriasis

Ostomy care (no liquid)

Thoracocentesis (noliquid)

Abdominocentesis (no liquid)

Venipuncture, injection, blood transfusion (Arm)

Deltoid subcutaneous injection

Male/Female urethral catheterization

Male/Female bladder irrigation

Enema

Holistic nursing: flexible limbs joints, sponge bath, clothes changing,  
cold & hot therapy

### Dbios-004 Basic Nursing Manikin Female

CPR simulation, Venipuncture, injection, blood transfusion (Arm)

#### Features

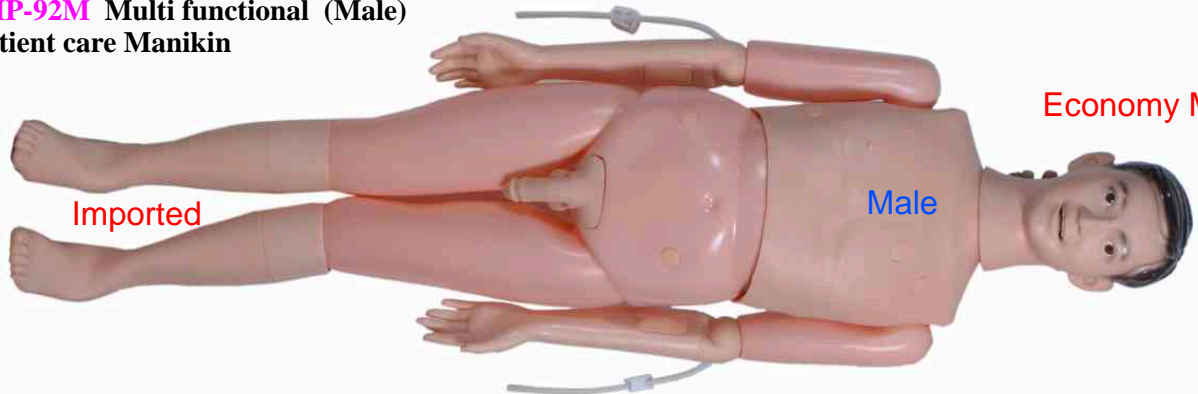
Hair and face washing  
Eye and ear washing and administering  
Mouth cavity and artificial teeth care  
Breast care  
Postoperative care for tracheotomy  
Oxygen inhaling  
Nasal feeding  
Gastrolavage  
Ostomy care (no liquid)

Chest Cavity Puncture (no liquid)  
Lumbar puncture (no liquid)  
Venipuncture, injection, blood transfusion (Arm)  
Vastuslateralis injection  
Female bladder irrigation  
Female urethral catheterization  
Holistic nursing: flexible limbs joints, sponge bath, clothes changing, cold & hot therapy.

Intracardial, Intradermal,  
Deltoid subcutaneous and  
Buttocks intramuscular injection  
Enema



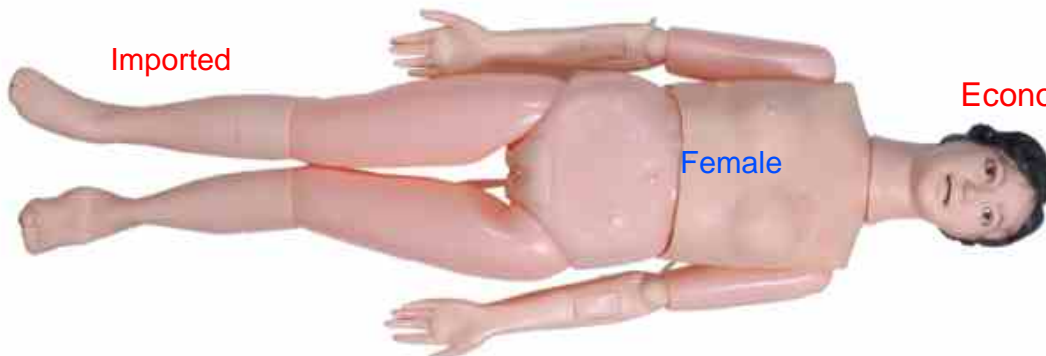
### IMP-92M Multi functional (Male) Patient care Manikin



Economy Model

Imported

### IMP - 92P Multifunctional Patient Care Manikin (Female)



Economy Model

Imported



**Dbios-005 Advanced Full-functional Elderly Nursing Manikin**  
with Male & female chest, Male & Female Interchangeable organs, B.P. Measurement



Female Chest

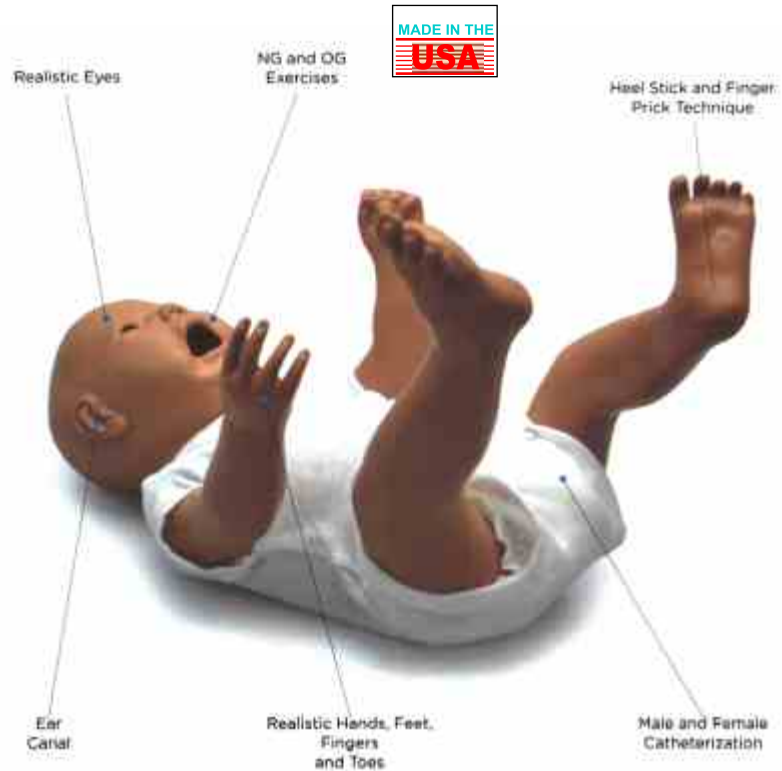
1. Hair and face washing
2. Manually simulate carotid pulse
3. Eye and ear washing and administering
4. Mouth cavity and artificial teeth care
5. Endotracheal intubation via mouth (demonstration only, not for training)
6. Tracheotomy
7. Oxygen inhaling
8. Oral and nasal feeding
9. Gastrolavage
10. Venipuncture, injection, transfusion (arm)
11. Deltoid subcutaneous injection
12. Vastuslateralis injection
13. Buttocks intramuscular injection
14. Male/female urethral catheterization
15. Male/female bladder irrigation
16. Stoma drainage
17. Colostomy
18. Enema
19. Sacral ulcer care
20. Holistic nursing: sponge bath, replacing clothes, cold and hot therapy
21. Realistic limbs joint, stiff simulated joints, truck may lean forward, can sit it the wheelchair
  - a) Truck- rotation, flexibility
  - b) Neck- rotation, flexibility, lateral curvature
  - c) Shoulder and buttock- endoduction, abduction, rotation, flexibility
  - d) Elbow-internal rotation, external rotation
  - e) Knee- internal rotation, external rotation
  - f) Wrist-internal rotation, flexibility, stretching, bending
  - g) Ankle- introversion, eversion, endoduction, abduction
22. Non-invasive blood pressure measurement
  - a) Systolic and diastolic pressure may be set individually in steps of 1mmHg
  - b) Systolic pressure 0-300mmHg, diastolic pressure 0-300Hg
  - c) Korotkoff sound volume in ten steps, 0-9



## IMP 104 New Born Baby

Our PEDI\* newborn looks just like a 0-8 week old baby. The chubby face and body with beautifully detailed tiny, soft hands and feet make you want to hold and care for this addition to our family of pediatric and adult advanced patient care simulator.

- Soft and flexible face skin
- Self-molded hair
- Realistic eyes
- NG exercises to demonstrate tube feeding and gastric suction
- Simulated ear canal
- Soft arms and legs rotate within the torso body for lifelike feel and position.
- Soft hands, feet fingers, and toes
- Heel stick and finger prick technique
- Soft upper body skin over torso for "baby like" feel
- Bathing and bandaging activity
- Interchangeable genitalia
- Urethral passage and bladder
- Male and female catheterization
- Enema administration
- T-shirt and diapers
- Soft carrying bad
- Instruction manual



## IMP 105 One Year Pediatric Care Simulator

### Features:

- Soft, childlike face skin.
- Self-molded hair.
- Eyes open and close in realistic eye sockets for ophthalmic procedures.
- Fully articulating head and jaw with teeth and tongue.
- NG and otic exercises.
- Bends at waist as in human.
- Jointed elbows and knees.
- Realistic hands, feet, fingers and toes.
- Soft upper body skin over hard upper body for realistic feel.
- Detachable at waist for easy storage.
- Bathing and bandaging activity.
- Intramuscular injection sites in left and right upper thighs.
- Interchangeable male organ.
- Tracheotomy opening.
- Male and female catheterization.

- Removable internal tanks.
- Enema administration.
- Neck brace.
- T-shirt and shorts.
- Soft carrying bag.



# Fundamental Lab.

## Manikin

### IMP 117A Patient Care Simulator with Ostomy (Male or Female)

#### Features:

- Full size adult manikin.
- Soft lifelike face skin.
- Stylish wig for hair care exercises and surgical draping.
- Movable jaw with tongue.
- Removable upper and lower dentures for oral hygiene.
- Realistic eyes in eye sockets for ophthalmic exercises.
- Ear canal for otic drops and irrigation.
- Mouth, nose and tracheotomy openings for naso-gastric lavage and gavage.
- Interchangeable male organ.
- Bends at waist as in human.
- 360° intramuscular injection site in right and left upper arm.
- Intramuscular injection site in buttock.
- Enema administration capability.
- Realistic urethral passage and bladder for catheterization exercises.
- Vaginal douching and pap smear exercises with realistic vagina and cervix.
- No drip thumb latch with audible "click" provides secure seal between ostomies and internal tanks.
- Soft, realistic hands, feet, fingers, and toes.
- Jointed elbows, wrists, Knees and ankles.
- Bathing and bandaging activity.
- Detachable and removable internal tanks.
- New modular tricuspid valve permits male or female catheterization with soft silicone catheters.
- Elevating pillow increases bladder pressure for increased flow during catheterization (Male or Female).



### IMP 102 Pediatric Care Simulator 5 Year old

#### Features:

- Soft lifelike face skin.
- Self -molded hair.
- Eyes open and close in realistic eye sockets for ophthalmic procedures.
- Fully articulating head and jaw with teeth and tongue.
- NG and otic exercises.
- Bends at waist as in human.
- Joint elbows, wrists, knees and ankles.
- Realistic hands, feet, fingers and toes.
- Soft upper body skin over hard upper body for realistic feel.
- Detachable at waist for easy storage.
- Bathing and bandaging activity.
- Intramuscular injection sites in deltoid and upper thigh.
- Interchangeable male organs.
- Tracheotomy opening.
- Male and female catheterization.
- Removable internal tanks.
- Enema administration.



- T-shirt and shorts.
- Neck brace.
- Soft carrying bag.
- Instruction manual.



## Dbios 0025 Three-year-old Child Nursing Manikin

### Features

1. Simulate pupils: one normal and the other mydriasis for pupils contrast teaching demonstration.
2. Simulates artery pulse including carotid pulse, radial pulse and femoral pulse; supports tracheotomy care.
3. Comes with realistic mouth, nose, tongue, throat, esophagus and trachea, supports trachea cannula via mouth and oxygen inhalation
4. Nasal feeding: insert the nasal feeding tube via the nose for gastrointestinal decompression, nasal feeding and gastric lavage.
5. CPR: support ventilation ways: mouth to mouth, BVM to mouth; electronic monitoring of insufflation frequency and volume, compression frequency and depth; insufflation or compression can be trained separately.
6. Venous transfusion, including arm veins, femoral veins and dorsal veins of foot.
7. Subcutaneous injection at bilateral deltoids, and intramuscular injection at vastus lateralis muscle and gluteus maximus.
8. Supports male/female urethral catheterization and enema operation; and the genitals are replaceable.
9. Ileostomy, colostomy and bladder stoma care.
10. Bone marrow puncture: puncture via tibia, where medicine can be injected.
11. General care: clothes wearing and changing, oral care, face washing, cold and hot therapy, binding up and ear irrigation, etc.



## Dbios-0026

### Infant Nursing Manikin

#### Features :

1. Head, neck and limbs can be moved freely. The chest skin can be replaced;
2. Cephalic venipuncture;
3. Umbilical venipuncture;
4. Oral and nasal intubation nursing;
5. Care of gastrolavage, enema and urethral catheterization;
6. Ostomy;
7. Deltoids and buttocks intramuscular injection;
8. Holistic nursing; sponge bath, replacing clother, lactation and diaper changing.



## IMP 612 Newborn PEDI Airway Trainer

#### Features :

1. Full body
2. Realistic chest cavity containing realistic organs
3. Fully articulating head, neck and jaw permitting head-tilt lift, jaw thrust and neck extension into the sniffing position.
4. Anatomically accurate mouth, tongue, airway and esophagus designed to illustrate the profound differences between intubating an infant, a child or an adult.
5. Soft neck with cricocartilage permits classic sellick maneuver.
6. Realistic chest rise during ventilation
7. Realistic trachea, bronchi and lungs. observable bilateral lung expansion under positive presure ventilation
8. Airway narrows below vocal cords
9. Realistic vocal cords with "fish-eye" appearance



MADE IN THE  
USA

### Dbios-0020 Full Functional Neonatal Nursing Manikin + CPR



1. Designed according to neonatal anatomical structure, which features skin softness, real touch feeling, flexible joints and supports all kinds of nursing operations;
2. General care: diapers replacement, clothes wearing and changing, oral care, cold and hot therapy, binding up;
3. Venipuncture/ transfusion: arm veins include right arm cephalic vein and superficial dorsal vein; Scalp vein includes posterior auricular vein and superficial temporal vein. There will be "Pop" feeling when the needle penetrates into the vein, and simulative blood backflow means successful puncture. Same site of the skin and vessels allows multiple repeated puncture training.
4. Umbilical cord care: ligation of umbilical cord, umbilical venous intubation and transfusion;
5. Gastric intubation: used for gastrointestinal decompression, nasal feeding and gastric lavage;
6. Teaching demonstration of trachea cannula via mouth and oxygen inhalation;
7. Bone marrow puncture: puncture via tibia, where allows medicine injection and transfusion.
8. Pulse: manually squeeze the bulb to simulate neonatal artery pulses including right brachial artery pulse, right femoral artery pulse and umbilical artery.
2. CPR: support multiple ventilation ways: mouth to mouth, mouth to nose, BVM to mouth; electronic monitoring of insufflation volume, compression depth; insufflation or compression can be trained separately.



### IMP 102 A Five Year CPR and Trauma Care Simulator

#### Features:

- Fully articulating head and jaw with teeth and tongue.
- Individual disposable airways.
- Airway blocked when head is forward.
- Easily accessible chest cavity with molded ribcage, lungs, and heart.
- Realistic chest rise.
- Carotid and femoral arterial pulse points.
- Soft, lifelike face skin with molded hair.
- Eyes open and close in realistic eye sockets for ophthalmic purposes.
- One normal eye and one eye dilated.



- Jointed elbows, wrists, knees and ankles.
- Realistic hands, feet, fingers and toes.
- Detachable at waist for easy storage.
- Practice regular or vest CPR.
- Exercise suit.
- CPR.
- Arterial Site.
- Disposable Airway .
- Custom nylon carrying bag.



### Dbios-022 Nursing Manikin + CPR with monitor

with interchangeable male & female chest , male/female interchangeable organs & breast cancers for breast examination,  
Venipuncture, injection, blood transfusion (Arm)

#### Features

Hair and face washing  
Eye and ear washing and administering  
Oral care and artificial teeth care  
Endotracheal intubation  
Tracheotomy care  
Oxygen inhalation  
Nasal feeding and gastric lavage  
Pupil observation: one normal, the other mydriasis  
Ostomy  
Lumbar puncture (no liquid, with removable skin cover)  
Thoracocentesis (no liquid)

Abdominocentesis (no liquid)  
Venipuncture, injection, blood transfusion (Arm)  
Deltoid subcutaneous injection  
Vastuslateralis injection and buttocks intramuscular injection  
Female/male urethral catheterization  
Female/male bladder irrigation  
Enema  
Holistic nursing: sponge bath, replacing clothes  
Squeeze the bulb to simulate carotid pulse  
CPR: Supports multiple ventilation ways, such as mouth to mouth, mouth to nose,  
bag respirator to mouth, electronic display of inflation volume, compression site and depth.



### Dbios-0032 CPR: Child and Adult (2 in 1) RED CROSS



# FUNDAMENTAL Lab.

## EMERGENCY TRAINING SIMULATOR

### IMP 115 B CPR Simon BLS

Totally disposable airways for hygiene.  
Fully articulated head, neck, and jaw permitting head/tilt, chin lift, jaw thrust, and neck extension into the "sniffing" position.  
Airway blocked when head is forward.  
Easily accessible chest cavity with ribcage, lungs, and heart for realism and practice of the Heimlich maneuver.  
Realistic chest rise.  
Carotid and femoral arterial pulse points.  
Eye open and close; one pupil is dilated.  
Instrumented for Code Blue/CPR Link which monitor the cadence and depth of cardiac compression and

Jointed elbow, wrists, knees, and ankles.  
10 disposable airways.  
Detachable at waist for easy storage.  
CPR.  
Arterial Site.  
Venous Site.  
Disposable Airway.



### IMP-115A Multi purpose simulator Full body with CPR, Gynae, Airway MGMT.& Breast Examination



REALISTIC CHEST  
CAVITY FOR CPR



BVM WITH REALISTIC  
CHEST RISE



OMNI' CODE BLUE' PACK



AIRWAY MANAGEMENT



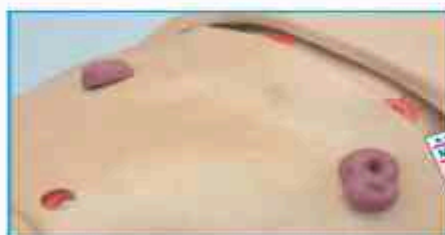
TRACHEOTOMY



INJECTION AND INFUSION



BREAST PALPATION



OSTOMY CARE



INTERCHANGEABLE GENITALIA



### Dbios-0030 Half Body CPR Training Combination WITH AED



1. Simulate standard open airway
2. External breast compression, intensity display of correct (at least 5cm):  
(1). Buzzing sound of correct compression intensity  
(2). Alarming sound of wrong compression intensity
3. Artificial respiration (inhalation): the volume of inhalation is observed through observing the wave of breast; (tidal volume  $\leq 500\text{ml}/600\text{ml}-1000\text{ml}$ )
4. Operation methods: exercise operation
5. Comes with AED trainer.

### Dbios-0031 Basic CPR Training Model (Half Body)

Features :

CPR manikin features:

1. Head can be raised up and down, neck joint is movable
2. Eyelid can open and close
3. Nose wing is soft, easy to tweak. The mouth can open and close. Can do mouth to mouth respiration or mouth to nose respiration
4. Consist of spring and heart model in heart part.
5. Skin is springy with natural skin color

CPR instrument feature:

- 1) Green light bright, heart pressure correct
- 2) Red light bright, heart pressure too strong
- 3) Not light bright, pressure on a wrong place or pressure is too light

Packing: 1Pcs/carton, 63x25x44cm, 8kgs



### IMP 136 Fat Old Fred Manikin (Elderly & overweight)



### IMP 116B Economy CPR Adult Manikin



### IMP 130 Little Junior™ CPR Manikin(Child)





# Fundamental Lab.

## IMP 131 Baby Anne™ Manikin (Infant)



## Manikin & Airway

### Ask for

Anatomy : Charts, Models & Slides

Physiology: Charts, Models

Biochemistry: Charts, Models

Community Medicine: Charts, Models & Slides

Pathology: Charts, Models & Slides

Forensic: Charts, Models & Slides

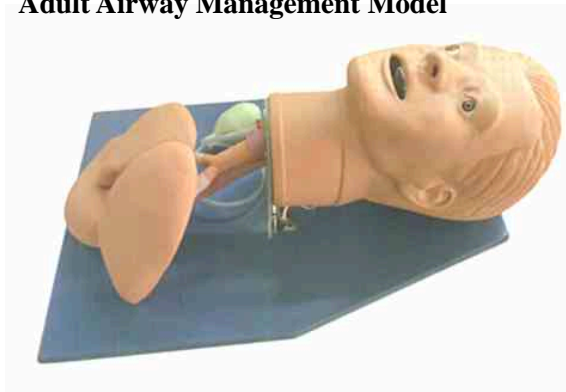
Microbiology: Charts, Models & Slides

Pharmacology :Charts, Models

Obg & Gyane: Charts, Models

## Dbios-0040

### Adult Airway Management Model



#### Features :

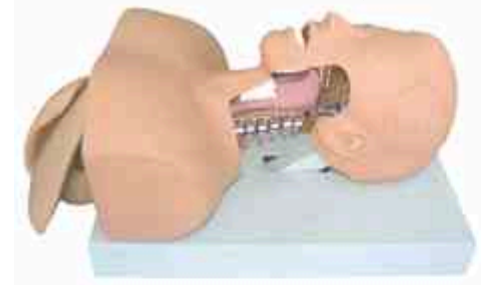
1. Anatomically accurate head and neck structures, which will be more effectively to illustrate "Sellick maneuver".
2. Simulate laryngospasm and tracheotomy care.
  - a) Supports thyrocricocentesis and tracheotomy care.
  - b) Supports practice in airway obstruction clearing and liquid foreign body suction.
  - c) Observe lung breathing movement when making artificial respiration, and supports practice in breath sounds auscultation.
  - d) Tracheal intubation via mouth
  - e) Nasal feeding and gastric lavage
  - f) Supports oral cavity, oropharynx and nasopharynx suction, make bronchial suction via mouth or nose with bronchoscope
  - g) Comes with simulative sputum to make the practice more realistic
  - h) Squeeze the bulb manually to simulate the carotid pulse

## JP 302 Advanced Half-length CPR Training Manikin



## Dbios-0041

### Adult Airway Intubation training Model



#### Features :

1. Accurate anatomical marks with good view of intubation
2. Supports trachea cannula via mouth and nose
3. Proper intubation, the lungs will inflate after air supply
4. Mistakenly insert into esophagus, the stomach will inflate after air supply, and there's electronic alarm function
5. If wrong operation make laryngoscope compress the teeth, there will be electronic alarm function.

### Dbios-0050 Surgical Suture Arm



#### Features :

1. With features of lifelike shape and realistic touch, the model suitable for cutting, suturing and bandaging exercise.
2. With wonderful elasticity and flexibility of skin, each model can be used for hundreds of times.

### Dbios-0051 Surgical Suture Leg



#### Features :

1. It can be simulate basic surgical skills such as cutting, suturing, bandaging and etc.
2. With wonderful elasticity and flexibility of skin, each model can be used for hundreds of times.

### Dbios-0054

#### Advanced Blood Pressure Arm



#### Features :

1. This model is a simulated right hand. It has remarkable exterior features and precise anatomical structure. Arterial blood pressure measurement training can be run on this simulator.
2. It provides the sound of Korokoff Gap.
3. The contraction pressure and diastolic pressure can be set individually before practice.
4. The numerical value of the contraction pressure and diastolic pressure can be set in any value.
5. Pressure value is indicated by mm Hg.
6. The setting precision can be as low as 1 mm Hg.

### Dbios-0053 Surgical Suturing and Bandaging Display Simulator

The simulator provides commonly used surgical incisions, which simulate all kinds of female thoracic and abdominal incisions, tube drains and amputation stump. Students can practice wounds treatments of washing, disinfecting, changing dressing, bandaging and etc. The skin is dry, soft and flexible, allowing the bandages to adhere better.

#### Features :

1. Thyroidectomy
2. Mid-sternal split - with two chests tube drains
3. Right mastectomy - with simulated drain
4. Right cholecystectomy - with simulated T-tube
5. Labarotomy
6. Appendectomy
7. Left colostomy
8. Right ileostomy
9. Abdominal Hysterectomy (transverse incision)
10. Left nephrectomy (thoraco-abdominal incision)



11. Right nephrectomy (oblique incision)
12. Laminectomy
13. Sacral decubitus ulcer - stage 2
14. Right thigh amputation stump
15. Bromidrosis surgery incision of right underarm (transverse suture)
16. Incision of gathered breast (radial ptern or arc incision)
17. Catheter drainage of pneumothorax
18. Suprapubic cystostomy
19. Excision of indirect inguinal hernia
20. Incision of femoral artery punction

### Dbios-0060 Venipuncture Training Arm



1. Simulating injection, blood transfusion, hemospasia of the arm;
2. There is obvious feeling when needle penstrates insertion;
3. Veins and skin can be acupunctured repeatedly, and these operations won't cause leaks.

### Dbios-0061

#### Venipuncture & Intramuscular Injection Arm

1. Injection, blood transfusion, hemospasia and deltoid intramuscular injection can be performed;
2. The skin can be replaced.



### Dbios-0062

#### Suture Training Pad (with stand)

#### Features :

1. It can be simulate basic surgical skills such as cutting, suturing, bandaging and etc. Multi-funtional Cutting & Suturing Pad Suturing training for kinds of truma shapes and positions



# I.V. Training

## Clinical Skill

### IMP 125 A Advanced Multipurpose Venous Training Arm

#### Features:

- Arm rotates 180° at deltoid region.
- Connects to all Gaumard adult simulators.
- Subtle venous network in arm and hand.
- Cephalic, basilic, antecubital, radial, and ulnar veins.
- Realistic "pop" as needle enters vein.
- Intramuscular injection site in deltoid area.
- Subcutaneous injection areas on the volar side of the forearm and the lateral side of the upper arm.
- Squeeze bulb to increase or decrease venous

- Veins stand out or collapse.
- Easily replaceable skin and veins.
- Administration of medication by intravenous bolus.
- Simulation of infusion technique.
- Blood collection exercises with simulated blood.
- Simulation of clenched fist and tourniquet position.
- Smoked Lucite base with stand.
- Soft nylon carrying bag.
- Set-up kit with simulated blood concentrate, pressure bulb, blood dispensing bag, spare skin, funnel, and powder.



### IMP 125 B Intravenous Training Arm

#### Features:

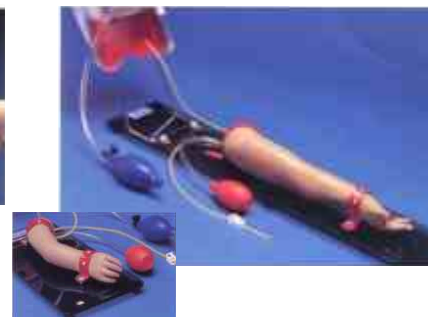
- Prominent venous network.
- Simulated cephalic, basilic, antecubital, radial, and ulnar veins.
- Simulation of infusion technique.
- Blood collection exercises with simulated blood.
- Administration of medication by intravenous bolus.
- Simulation of clenched fist or tourniquet position.
- Simulation of collapsed veins.
- Realistic "pop" as needle enters vein.

- Resealing veins and outer skin.
- Smoked Lucite base with stand.
- Soft carrying bag.
- Set-up kit with simulated blood concentrate, pressure bulb, blood dispensing bag, spare arm skin, funnel, and talcum powder.
- Instruction manual.

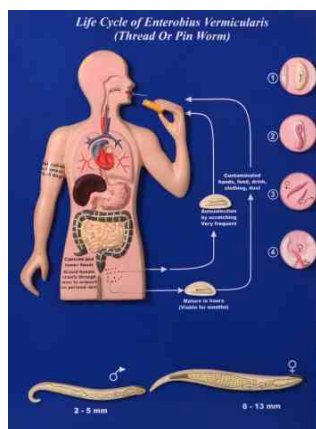
### IMP 125 E One Year Injection Arm Newborn Injection Arm

#### Features:

- Medial venous structure.
- Two veins in dorsum of hand.
- Radial and brachial arteries.
- Squeeze bulb simulating either collapsed or normal veins.
- Easily replaceable skin and veins that withstand multiple needle sticks.
- Mounted on smoked Lucite base and supplied with blood bag and stand, synthetic blood concentrate, squeeze bulb, and spare arm skin.



## \* Community (PSM) Department



PSM Models 125  
Charts 600  
Slides :- PSM Set of 50  
Scientist Portraits 55



Also available Charts, Models & Slides  
**Anatomy Department**

Embryology Models 80  
Charts:- Anatomy, Embryology  
& Histology 600  
Slides :- Histology USA Set of 100  
Histology German Set of 62  
Scientist Portraits 90

## Dbios 0035 Cervical Lesion Model

### Features

Cervical lesion diagnosis and differential diagnosis;  
Made from high polymer material, environmental protection and high simulation;  
Six diseased cervix are mounted on a board, easy for teaching demonstration in the class;  
Includes: linear laceration, acute suppurative cervicitis, canceration, polyp, infectious cervical glands (follicle) and cyst



## IMP 100 A Labor Delivery Module

### Features:

- Six labor stations selected to represent conditions of the cervix and vagina prior to labor, during labor, and at birth in a primigravid woman.
- Stations may be placed in birth canal of the IMP 100.
- Stations illustrated are: STA-5 prior to onset of labor; STA -4 cervix partially effaced; STA-3 cervix fully effaced; STA0 fetal head at plane of ischial spine; STA+2 cervix nearing full dilation; STA+5 crowing of fetal head.
- Six labor stations.
- Carrying case.

## IMP 100 Advanced Childbirth Simulator

### Features:

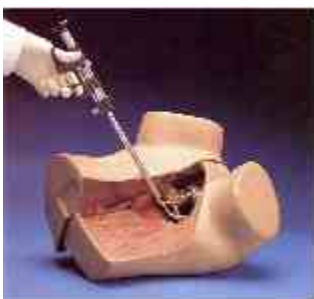
- Normal vaginal delivery.
- Complete, frank, and footling breech birth.
- C-section delivery.
- Ritgen's maneuver.
- Episiotomy.
- Vertex presentation.
- Intrauterine manipulation.
- Vertex/vertex, vertex/breech, breech/vertex, or breech/breech presentation in multiple birth.
- Prolapse of umbilical cord.
- Demonstration of placenta previa: total, partial, and marginal.
- Normal delivery of umbilical cord and placenta.
- Palpation of fetal fontanelles.
- Removable diaphragm end plate for manual positioning of fetal baby/babies.
- Removable stomach cover for positioning fetus.
- Life-size pelvic cavity with major anatomic landmarks.
- Hand-painted outline of the bony pelvis.
- Three soft vulval inserts for episiotomy exercises.
- One baby boy and one baby girl, each with umbilical cord and placenta.
- Anatomically accurate backbone and fontanelles on fetal baby/babies.
- One skin-tone stomach cover.
- Four extra umbilical cords.
- Two umbilical clamps.
- Talcum powder.
- Instructional manual.



## IMP 152 ZOE Gynecologic Simulator.

### Features:

- Full size adult female lower torso with relevant internal anatomic landmarks.
- Bi-manual pelvic examination.
- Palpation of normal and pregnant uteri.
- Vaginal examination, including insertion of speculum.
- Visual recognition of normal and abnormal cervixes.
- Uterine sounding.
- IUD insertion and removal.
- Distal end of vagina facilitates introduction of a female condom or sizing a 75mm diaphragm.
- Removable introitus adds flexibility for addition of multiple ZEO options.
- Minilaparotomy.
- One anteverted and one retroverted parous uterus.
- One ten-week pregnant uterus.
- One twenty-week pregnant uterus.
- Five normal cervixes with patent os.
- Four abnormal cervixes.
- Ten fallopian tubes.
- Realistically sculpted and anatomically accurate ovaries and fimbriae.
- Uterus and cervix feature patented "screw" design for fast and easy change-out.
- Talcum powder.
- Instruction manual.





**Dbios-0070 Maternal and Neonatal Childbirth Emergency Training System with CPR****Feature & Function**

1. Realistic anatomical structure of the puerpera with flexible limbs, and supports lithotomy position.
2. Removable abdominal cover, fetus for delivery comes with flexible limbs and supports all kinds of fetal positions.
3. **Fetal heart sounds can be auscultated at the belly.**
4. Supports prenatal Leopold maneuver to check fetal positions.
5. Auto delivery system, simulates the whole process of childbirth, and the fetal head descending position and dilation of cervical os can be measured during childbirth.
6. Supports puerpera tracheal intubation.
7. Puerpera's arm supports venepuncture and allows drug therapy.
8. Puerpera nursing care, including basic nursing, hair and face washing, oxygen inhalation and oral cavity care, etc.
9. Cervical modules supports prenatal cervical examination and simulate 6 stages of cervical dilation.
10. Simulates all kinds of dystocia, e.g.: placenta previa, prooapse of cord, cord around neck, breech delivery.
11. Episiotomy modules include left incision, median incision and right incision; allow postoperative wound care for perineotom.
12. Uterus, 48 hours after delivery, can simulate postpartum uterus bleeding.
13. Emergency and vital signs monitoring: Manually simulates carotid pulse, supports BP measurement and CPR Training.
14. Neonatal emergency nursing manikin supports neonatal care, neonatal CP puncture, etc.





### Dbios-0072

#### Vacuum Deliver Simulator

##### Features :

Smooth, soft skull with fontanelles for realistic vacuum delivery

PACKAGE SIZE: 51cm\*24.5\*37cm

G.W.: 4.4KG



## Maternal & Infant Training

### Dbios-0071 Maternal Simulator

##### Features :

1. The model consists of adults female torso, full-term fetus.
2. The model with realistic rib, heart, lungs and other anatomical structure.
3. Automatic delivery system, process through the delivery device fully simulate the real delivery to achieve position rotation.
4. Delivery speed can be adjusted.
5. Practicing, examining the fetal heart sound frequency, heart rate range of 60 - 180 times / min
6. With two months of pregnancy is simulated uterine size, can be filled with gas
7. A flexible joints, limbs soft full-term fetus

Gynae



### IMP-100G Human Reproduction and Development kit

##### Features :

7-8 week Sh. wt. 0.19 lbs(0.09 kg)

13 week Sh. wt. 0.38 lbs (0.17 kg)

20 week Sh. wt. 0.63 lbs (0.29 kg)

5 month Female. Sh. wt. 0.75 lbs. (0.34 kg)

5 month Male Sh. wt. 0.75 lbs. (0.34 kg)

7 month Female. Sh. wt. 0.2 lbs. (0.91 kg).

Full-Term Male. Sh. wt 7 lbs. (3.18 kg).



### Dbios-0073

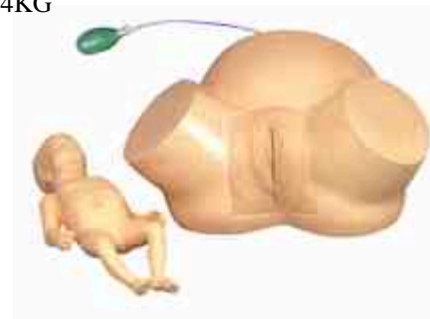
#### Difficult Labor Simulator

##### Features :

The simulator can demonstrate all kinds of difficult deliveries:

PACKAGE SIZE: 51cm\*24.5\*37cm

G.W.: 4.4KG



### Dbios-0074

#### Advanced Abdominal Palpation & Delivery Mechanism Integrated Simulator

##### Features :

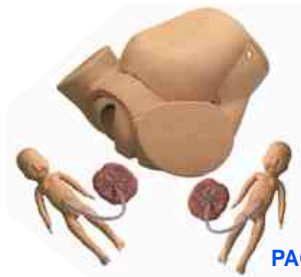
1. Demonstrate the fetus, umbilical cord and placenta of vacuum-assisted delivery, flexible fetal joint, and multiple normal and abnormal positions of fetal delivery can be showed.
2. Equipped with manual delivery mechanical parts; by manual, the whole delivery process including engagement, descending, flexion, internal rotation, extension, restoration, external rotation and fetal delivery, can be showed.
3. Can practise and master the abnormal comprehensive skills labor, labor (dystocia), midwifery and perineum protection.
4. Equipped with soft elevated for Leopold Maneuver practice.
5. Equipped with models for cervical and vaginal examination practice before and at birth.



**Dbios-0075****Advanced Labour Simulator With Leopold Maneuver**

Features :

1. An anatomically correct pelvic model with fetus and placenta to give students experience with multiple technique and procedure for emergency childbirth.
2. Twinborn (one infant boy and one infant girl) presentation and delivery.
3. Can practice and master the comprehensive skills normal labor abnormal labor, midwifery and perineum protection.
4. Leopold Maneuver can be practiced in this model.



**PACKAGE SIZE: 47.5cm\*30cm\*40cm**  
**G.W.: 9.5KG**

**Dbios-0076****Advanced Childbirth Simulator With 2 Babies**

Features :

1. An anatomically correct pelvic model with fetus and placenta to give students experience with multiple technique and procedure for emergency childbirth.
2. Twinborn (one infant boy and one infant girl) presentation and delivery.

**Dbios-0080****Artificial Abortion Simulated Uterus**

Features :

1. Three pregnant uterus can be opened and add to simulated gestation sac;
2. Uterine dilator and curet can be inserted into cervix; can simulate curettage be operation and the simulated gestation sac can scraped;
3. With basement support and can fix uterus in the right position .

**IMP 100 C GYN/AID Gynecologic Simulator.**

Features:

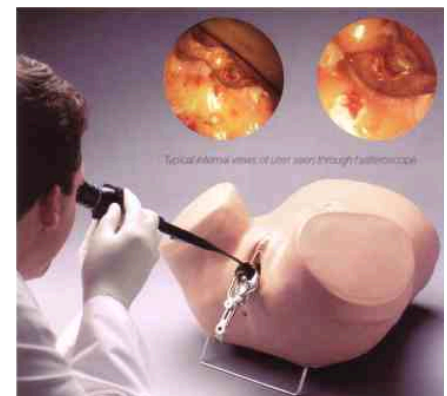
- Full size female adult lower body with removable soft outer skin.
- One normal anteverted uterus with transparent top and round ligaments.
- Seven uteri with one normal "control" uterus and six with external uterine abnormalities.
- Two normal cervixes with patent os for IUD insertion/removal.

- Uterus and cervix feature patented "screw" design for fast and easy change-out.
- Contraceptive sponge insertion and removal.
- Female condom insertion and removal.
- Diaphragm and cervical cap insertion and removal.
- Six cervixes with cervical abnormalities.
- Anatomically accurate fimbriae and ovaries.
- Talcum powder.
- Instruction manual.

**IMP 153 Hysteroscopy Simulator.**

Features:

- Full size female adult lower torso with removable soft outer skin.
- Seven uteri including normal "control" uterus with healthy internal and external appearance.
- Internal anatomic artwork of normal and abnormal uteri.
- Internal representation of endometrial polypsis, fibroids, early and advanced carcinoma of the endometrium, torsion of sloughing fibroid, and carcinoma of the fundus.
- External representation of normal and abnormal uteri.
- Palpation of normal and abnormal uteri.
- Normal cervix and interchangeable uteri with patented "screw" design.
- Instruction manual.

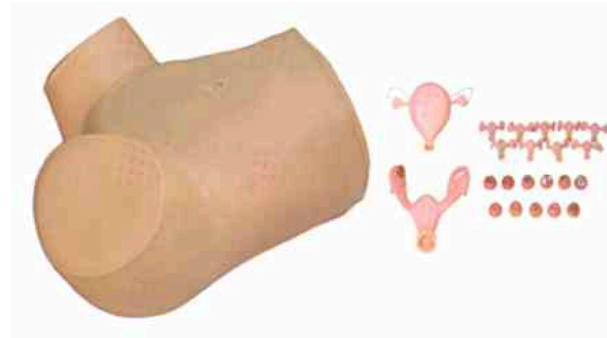


**Dbios-0090**

**Gynecological Training Model**

Features :

1. Normal and abnormal uteri palpation
2. Bi-manual and tri-manual pelvis examination
3. Vaginal speculum and colposcope examination
4. Visually observe normal and abnormal lesions cervix
5. Placing and removal of IUD
6. Observe the septal size and position
7. Observe the uterus, ovary, Fallopian, round ligament and other structures
8. Normal and abnormal cervix models
  - a) normal cervix
  - b) IUD placing and removal from normal cervix
  - c) chronic cervicitis
  - d) cervical laceration
  - e) cervical polyp
  - f) cervical inflammation Naboth cyst
  - g) acute cervicitis
  - h) cervical adenocarcinoma
  - i) trichomonad cervicitis
  - j) cervical verruca acuminata
  - k) cervical vitiligo



9. Normal and abnormal uteri and accessories models
  - a) normal uterus and accessories (uterine anterior wall is transparent, and it supports placing and removal of ICD)
  - b) myoma of uterus
  - c) uterus with right hydrosalpinx
  - d) uterus with right salpingitis
  - e) uterus with right oviduct tubercle
  - f) uterus with right tubal ovarian cyst
  - g) uterus with obvious anteversion and anteflexion
  - h) uterus with obvious hypsokinesis and retroflexion
  - i) gravid uterus (five-month fetus)
  - j) ectopic gestation
  - k) salpingemphraxis
  - l) salpingemphraxis

**Dbios-0091**

**Maternity Examination Simulator (with FHS)**

Features :

1. Simulates a torso of adult female in supine position.
2. Consists of breast, pubic symphysis, pelvis and fetus, etc.
3. Supports practice in Leopold Maneuver, Fetal heart sound auscultation, external pelvic measurement and mammary care.
4. Manually squeeze the bulb to inflate the uterus to adjust its size to be close to real human status
5. Necessary bones for abdominal measurement and pelvis measurement engraved in the simulator, which makes the palpation more realistic.
6. The speed and volume of the fetal heart sound can be adjusted anytime, FHR : 80 - 180bpm, and it varies with the frequency.



**Dbios-0092**

**Perineum Suturing Training Model**

Features :

1. Right posterior incision, left posterior incision or median incision can be selected to exercise perineum cutting and suturing.

PACKAGE SIZE: 16.5cm\*10.5cm\*16.5cm

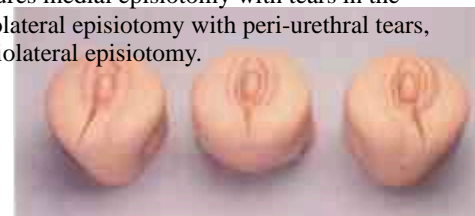
G.W.: 0.94KG



**IMP 107 A Postpartum Suturing Trainer**

Features:

- Soft vinyl enables use of standard needle holder with "00" or "000" chromic sutures.
- Three modules features medial episiotomy with tears in the labia minora, mediolateral episiotomy with peri-urethral tears, and a standard mediolateral episiotomy.

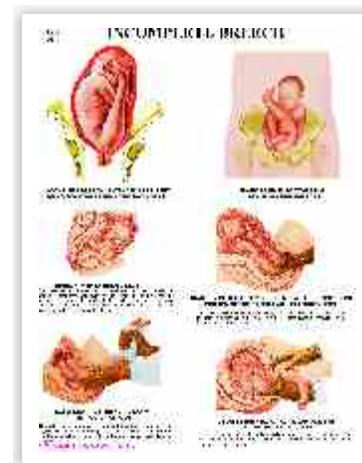


## Midwifery Charts as per INC Syllabus

Size 20"x26" Laminated & Fitted with Plastic Strip **OR**

Size 20"x26" Laminated &amp; Framed on NU-Wood Board

DMC 1.	Breast Changes in pregnancy	DMC 10.	Face presentation
DMC 2.	Uterine changes in pregnancy	DMC 11.	Brow presentation
<b>Stages of Labour</b>		DMC 12.	Twin pregnancy
DMC 3	First Stage	DMC 13.	Placenta praevia different stages
DMC 4.	Second Stage	DMC 14.	Caput Succedaneum, Cephalhaematoma
DMC 5.	Third Stage	DMC 15.	Congenital Malformation of New Born
<b>Breech presentation</b>		DMC 16.	Variations of Cleft Deformity
DMC 6.	Complete breech	DMC 17.	Spina Bifida
DMC 7.	Incomplete breech	DMC 18.	Hydrocephalus
DMC 8.	Foot presentation	DMC 19.	Anencephalus
DMC 9.	Shoulder presentation		



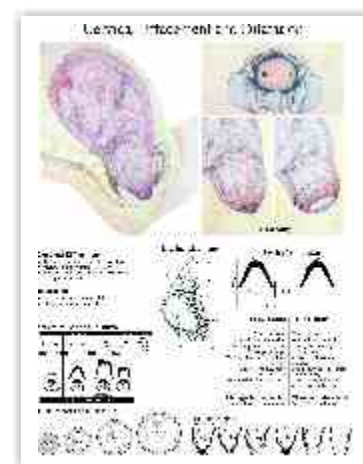
DMC 7

## Child Birth Classic Series

Size 20"x26" Laminated & Fitted with Plastic Strip **OR**

Size 20"x26" Laminated &amp; Framed on NU-Wood Board

CH 1301	Female Reproductive Anatomy
CH 1302	Male Reproductive Anatomy
CH 1303	Conception
CH 1304	The Developing Embryo
CH 1305	First Trimester
CH 1306	Second Trimester
CH 1307	Third Trimester
CH 1308	Fetal Presentation & Position
CH 1309	Cervical Effacement & Dilatation
CH 1310	Internal Exam During Labor
CH 1311	Internal Rotation
CH 1312	Extension Beginning
CH 1313	Fetal Head Emerging
CH 1314	Crowning
CH 1315	Extension Completes
CH 1316	External Rotation : Restitution
CH 1317	External Rotation : Shoulder Rotation
CH 1318	Expulsion
CH 1319	New Born
CH 1320	First Contact
CH 1321	Placental Separation & Expulsion
CH 1322	New Born Appearance & Procedures



CH 1309

## Breast Care Charts

Size 20"x26" Laminated & Fitted with Plastic Strip **OR**

Size 20"x26" Laminated &amp; Framed on NU-Wood Board

BCC 11.	Better health through awareness
BCC 12.	Risk factor for breast cancer
BCC 13.	Warning signs of breast cancer
BCC 14.	Breast cancer detection method
BCC 15.	Basic BSE method



BCC 15

**Community Bag with all Articles as per INC syllabus**  
**Midwifery Kit with all Articles as per INC syllabus**



Gyane

MCH  
Models

### Am 183 Series Demonstration Model of Pregnancy



(Fourth Month)



(Fifth Month)

(Sixth Month)

(Seventh Month)



(Eight Month)



(Ninth Month)

### AM 79B Human Development of Embryo at End the 1st Month



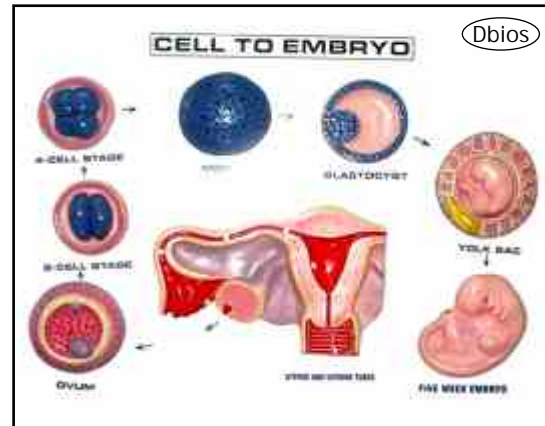
Dbios

Charts & Models available for Pathology,  
Microbiology, Physiology, Forensic  
& Community Medicine

Dbios

### Am 83B Cell to Embryo

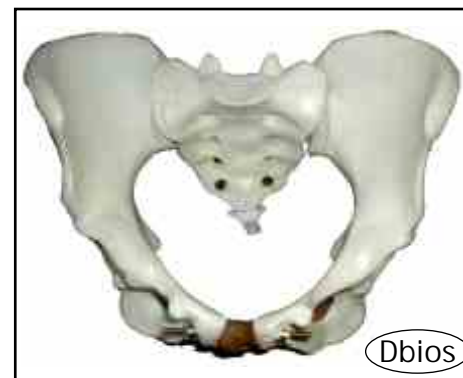
Size 16"x24"



### AM 79A Fertilization and Development of the Human Ovum Up to 3rd.



### AM 98 Human Female Pelvis



Dbios



**AM-80C&D** Fetal & Maternal Surface of Placenta in one Model



**AM 498A** Female Pelvis with Muscles



Dbios

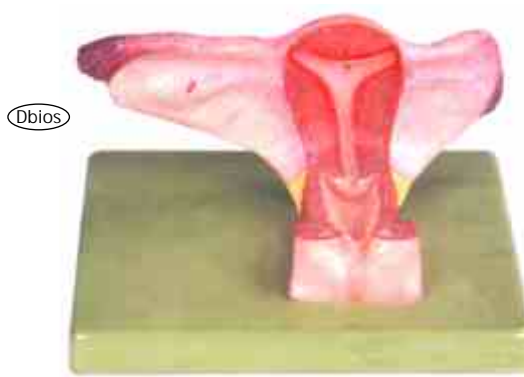
**IMP-258A** Infant Skull



**IMP-353B** Stages of Fetus During Pregnancy



**IMP 280B** Female Inner Genital Organs



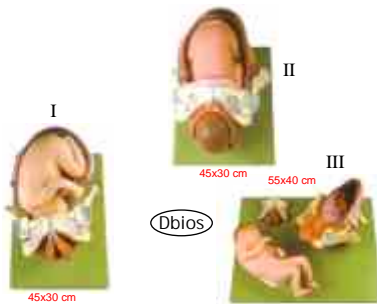
Dbios

**AM 85** Uterus in 9th month (Full size fetus)



Dbios

**AM 84A** Demonstration Model of Childbirth (Set of 3)



Dbios

**AM 70A** Mammary Gland in Resting Period



**AM 70B** Mammary Gland in Lactation



**AM 70C** Ovary Models (8 Part)



**IMP 353C** Human Embryo



22cm.

**AM 96A** Model of Condom



**AM 96B** Tubectomy



**AM 96C** Vasectomy



**AM 80A** Model of Placenta  
Enlarged



**AM 97A** Foetal Skull



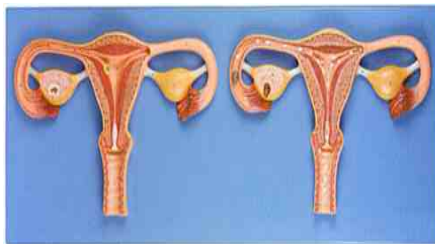
**AM 80C** Maternal Placenta



**AM 77** Human  
Spermatozoon



**IMP 380B** Fertilization Process



**AM 53A** Imported-Fetal Circulatory  
System

Size: Natural size.



**AM 98A** OBST. Pelvic with Fetal Skull



**Dbios-0100** Pelvis with Fetal Heads Model

Features :

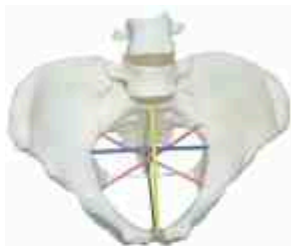
1. That can be observed during childbirth fetal relationship with the position of the pelvis.
2. Can be intuitive demonstration, declining, prone lexion, rotation, backstretch , reset and external rotation, fetal childbirth, etc. The whole process of delivery.
3. Can be used to demonstrate the use of forceps, when childbirth fetal attractor.



**Dbios-0101** Pelvimetry Demonstration Model

Features :

1. Model for adult pelvis, real size, shortage of anatomical structures.
2. Show the pelvic cavity surface of three products: Pelvic entrance face, in the pelvis, pelvic exports
3. Including hip, the sacrum, sacral promontory, coccyx, ischial spine, sacroiliac joints, iliac shame promontory, toe bone joint, to 4, 5, lumbar structure, etc.



**IMP 106E**  
IMP. Rubber Baby



**IMP 106T** New born baby

TAIWAN MAKE



**Community BAG with article as per INC**



## Dbios-0093

### IUD Training Model

Features :

1. The good shape of the model makes the training clearly.
2. Normal and abnormal positions of uterus can demonstrate the uterine anteversion and retroversion



PACKAGE SIZE: 18cm\*15cm\*17cm  
G.W.: 0.46KG

## IMP 154 Uterus II

Features:

- Coronal section of uterus, ovaries, and fimbriae.
- Clear plastic window permits easy viewing of IUD.



## IMP 155 Uterus

Features:

- Normal uterus.
- Clear plastic window permits easy viewing of IUD.
- Plastic window "tilts" open to permit removal of IUD.



## AM 89 Foetus Delivery Model with leather baby

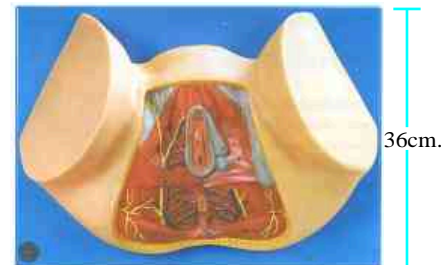


## PM 23A Diseased Uterus Ovary



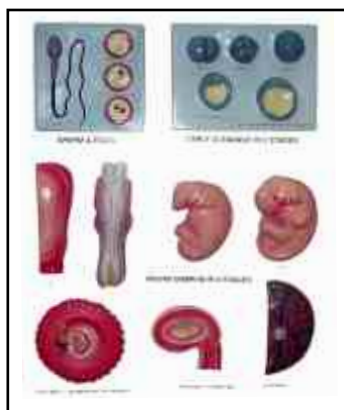
## IMP 4336C Female Perineum Anatomy

The anterior urogenital triangle (urogenital region) the posterior triangle anus (anal region) and the anatomical structure of perineum (including the genital organ, perineal muscles, etc); 12position are displayed  
Size: Life Size 36cm x 25cm x 12cm



## AM 83C Human Development Survey set

Size 16"x24"



Ask for

Anatomy : Charts, Models & Slides

Physiology: Charts, Models

Biochemistry: Charts, Models

Community Medicine: Charts, Models  
& Slides

Pathology: Charts, Models & Slides

Forensic: Charts, Models & Slides

Microbiology: Charts, Models & Slides

Pharmacology :Charts, Models

Obg & Gyane: Charts, Models



## Dbios-0110

### Male Condom Model

Features :

1. Mounted on a lucite stand
  2. Penis is erect
  3. Simulation of ejaculation
- PACKAGE SIZE: 19cm\*15.5cm\*17.5cm  
G.W.: 0.46KG

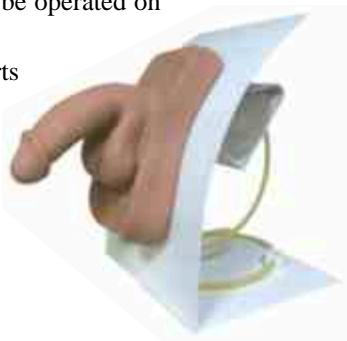


## Dbios-0112

### Male Catheterization Model

Features :

1. Simulate real urethral catheterization operation training, realistic genitalia can carry out real urethral catheterization and genital care operation;
2. Fixed on bracket, can be operated on table;
3. With water-proof shorts which can be worn outside of clothes to operate, suitable for a group of two students to practice.



## Dbios-0111

### Female Catheterization Model

Features :

1. Simulate real urethral catheterization operation training, realistic genitalia can carry out real urethral catheterization and genital care operation;
2. Fixed on bracket, can be operated on table;
3. With water-proof shorts which can be worn outside of clothes to operate, suitable for a group of two students to practice.



## Dbios-0115 NSV Model

Features :

1. Simulate an adult male genital structure realistically
2. Mainly for training vasectomy operation design



## IMP 151 Multipurpose Male Care Simulator

Features:

- Full size male lower torso.
- Internal bladder for catheterization.
- Four interchangeable prostates depicting moderately enlarged benign prostate, prostate with two discreet nodules, prostate with easily palpable large mass, prostate with malignant invasive cancer.
- Realistic penis and two scrotal sacks; one scrotal sack is normal, the other contains tumors in each testicle.
- No Scalpel Vasectomy kit containing two removable scrotal skins, two testicles and two long vas assemblies that can be advanced as needed for NSV exercises.
- Rectum and colon containing benign and malignant masses easily visualized using an appropriate endoscope.



## IMP 148 Advanced Patient Care Male Prostate Simulator

Features:

- 4 interchangeable modules depicting moderately enlarged benign prostate, a prostate with two discreet nodules, a prostate with an easily palpable large mass, and a prostate with malignant invasive cancer.
- Prostates individually mounted on clear plastic cards for easy placement and removal.
- Instruction manual.





## IMP 141 Breast Model with Interchangeable Nodules

This educational model comes with five different-sized lumps that can be inserted and removed from the back of the breast. Perfect for mammography and BSE motivation. Includes a carrying case and extra set of breast lumps. Sh. wt. 2 lbs.



## IMP 143 Nonsexual Breast Self-Examination (BSE) Testicular Self-Examination (TSE) Model

Designed to minimize embarrassment in mixed groups, this display features simulated breast tissue and a simulated scrotum molded in generic shapes. The models contain lumps that scrotum can be felt on both sides of display. 12"x 9". Sh. wt. 3.50 lbs.

## Dbios 120 Inspection and Palpation of Breast Model

### Features

1. This model can be used to exercise mammary tumors palpation skill.
2. In order to facilitate training process, we implant benign tumors and malignant tumors into the mammary gland.
3. Basing on various position, size, texture, the students can identify he tumor is benign or malignant.



## Physiology Models

- PHM 1 RETINOGENICULOSTRIATE VISUAL PATHWAY
- PHM 2 DIGESTION OF CARBOHYDRATES
- PHM 3 ACTION OF INSULIN
- PHM 4 PANCREAS SECRETION
- PHM 5 TASTE RECEPTORS
- PHM 6 DIGESTION OF PROTEIN
- PHM 7 ENTERIC NERVOUS SYSTEM
- PHM 8 COCHLEAR RECEPTORS
- PHM 9 PERIPHERAL NERVOUS SYSTEM
- PHM 10 ESOPHAGUS
- PHM 11 OLFACTORY RECEPTORS



PHM 3



PHM 8



## Models

## Anatomy

**A-86 Adult Leg Bone with & Ligaments**



**A-87 Adult Arm Bone Joints & Ligaments**



**IMP 1 Male Muscle Figure** This model consists of 27 parts



**IMP 284 MICRO Anatomy Kidney.**

A rare collection

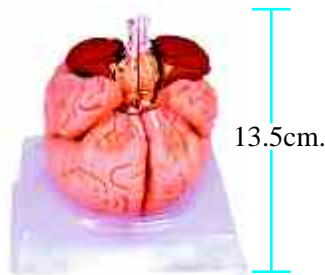
**IMP 284**



**DC- 121 Unisex Torso**  
23 Parts 85 cm.



**IMP 328 Brain**



13.5cm.

**IMP 314 Eyeball**  
Separated into 7 parts.



19cm.

**IMP 322A Spinal Cord in Spinal Canal**



75cm.

**IMP 305 Larynx**  
Separated into 2 parts,



14cm.

**IMP 309 Heart, lung and Larynx**



36cm.

**IMP 313 Anatomical Heart Model**



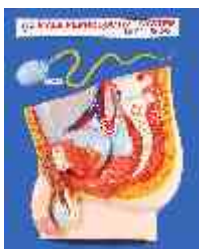
15cm.

**IMP 312 Anatomical Heart Model**  
Separated into 3 parts,

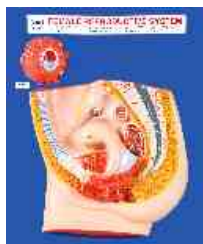


25cm.

**AM 65A Reproductive Male**



**AM 66A Reproductive Female**



**IMP 337A Excretory System**



40cm.

**IMP 309C Digestive System**



75cm.

**IMP 333B Kidney, Nephron & Corpuscle.**



**IMP 352** Block Skin



**IMP 262A** Teeth.



**IMP-309B** Human Stomach.



**IMP 317** Ear Model.



**IMP 335** Male Genital Organs.



**IMP 332A** Spleen, Pancreas & Duodenum.



**IMP 333C** Kidney on Stand



**IMP 336A** Female Pelvis



**IMP 337** Female Genital Organs.



**IMP 126** Experience the worldwide best-selling natural casts of human skeletons

**A-80** Functional Shoulder Joint



**A-81** Functional Hip Joint



**A-82** Functional Knee Joint



**A-83** Functional Elbow Joint



**AM103. DISARTICULATED HUMAN SKELETON WITH SKULL**



**A-84** Functional Wrist Joint



**A-85** Functional Ankle Joint



**IMP 337B** Anatomical Uterus

The mode is dissected in sagittal sections, shows bladder, uterus, vagina, ureter & ovary  
Features: 2 Parts.  
Height 8cm.  
Width 11cm.  
Thickness 8.5cm.



**IMP 126**

A rare collection





## Anatomy model Standard quality Rs. 950/- Each Otherwise Mentioned

- |                                   |                 |                           |
|-----------------------------------|-----------------|---------------------------|
| 1. The Nervous System             | 9. The Eye      | 17. Testicle              |
| 2. The Respiratory System         | 10. The Liver   | 18. Spinal cord           |
| 3. The Female Reproductive System | 11. The Kidney  | 19. Lung                  |
| 4. The Male Reproductive System,  | 12. Head & Neck | 20. Torso (Rs. 3500)      |
| 5. The Digestive System,          | 13. The Ear     | 21. Skeleton (Rs. 2200)   |
| 6. The Urinary Tract,             | 14. Circulatory | 22. Loose Bone (RS. 1600) |
| 7. The Brain,                     | 15. Uterus      |                           |
| 8. The Heart                      | 16. Lower jaw   |                           |

For More Information  
Visit [www.dbios.org](http://www.dbios.org)



Circulatory System

## Anatomy Charts

Size 20"x26" Laminated & Fitted with Plastic Strip **OR**  
Size 20"x26" Laminated & Framed on NU-Wood Board

- |   |                                  |
|---|----------------------------------|
| 1. Skeleton System.   | 15. Stomach                      |
| 2. Muscular System (Showing different muscles of the body). | 16. Pancreas                     |
| 3. Joints and Ligaments.                                    | 17. Spleen.                      |
| 4. Nervous System   | 18. Small Intestine.             |
| 5. Brain,   | 19. Larger Intestine.            |
| 6. Spinal Cord.   | 20. Liver and Bladder.           |
| 7. Cardio-vascular System.                                  | 21. Kidney                       |
| 8. Respiratory System.                                      | 22. Skin.                        |
| 9. Lungs.   | 23. Ear.                         |
| 10. Trachea.  | 22. Female Reproductive System.  |
| 11. Larynx.   | 24. Menstrual Cycle.             |
| 12. Digestive System.                                       | 25. Male Reproductive System.    |
| 13. Oral Cavity.  | 26. Endocrine Glands.            |
| 14. Teeth.  | 27. Eye.                         |
|   | 28. Internal Organs of the Human |



EYE

## Dbios Human Rexine Charts (57 Charts)

Size : 30" X 40"

### SYSTEMS OF HUMAN BODY

- CH 551 Muscular System  
CH 551A Muscular Back View  
CH 552 Skeleton-I (Entire skeleton, vertebral column & skull)  
CH 552A Skeleton (Back view)  
CH 553 Nervous System  
CH 554 Autonomic Nervous System  
CH 555 Arterial System  
CH 556 Venous System  
CH 557 Lymphatic System  
CH 558 Digestive System  
CH 559 Respiratory System  
CH 560 Excretory System  
CH 561 Female Reproductive System  
CH 562 Male Reproductive System  
CH 563 Endocrine System  
CH 597 Human Immune System

### STRUCTURES/ORGANS

- CH 564 Heart  
CH 565 Brain

- CH 566 Spinal Nerves  
CH 567 Skeleton-II (Vertebrae, Sacrum & Thoracic Cage)  
CH 568 Skeleton III (Girdles & Limbs)  
CH 569 Vertebral Column  
CH 570 Human Skull  
CH 571 Head & Neck  
CH 572 Eye  
CH 573 Ear  
CH 574 Ear, Nose & Throat  
CH 575 Skin  
CH 576 Nephron  
CH 577 Shoulder & Elbow  
CH 578 Hand & Wrist  
CH 579 Hip & Knee  
CH 580 Foot & Ankle  
CH 581 Teeth

### STRUCTURES/ORGANS

- CH 582 Human Liver  
CH 583 Kidney

- CH 584 Pregnancy & Birth  
CH 585 Pharynx & Larynx  
CH 586. Embryo Development  
CH 587. Human Anatomy  
CH 587A. Human Blood Cells.  
CH 588 Nose  
CH 589 Tongue  
CH 590 Human Joints  
CH 301 The Cell  
CH 592 Menstrual Cycle  
CH 593 Spinal Cord  
CH 594 Sense organs  
CH 595 Muscles  
CH 596 Bones & Cartilage  
CH 307 Gametogenesis  
CH 308 Fertilization  
CH 309 Oogenesis  
CH 310 Spermatogenesis  
CH 10 DNA  
CH 11 RNA

Size 20"x26" Laminated & Fitted with Plastic Strip **OR**  
Size 20"x26" Laminated & Framed on NU-Wood Board

**PEDIATRICS**

PE-633 Absence Seizure (Petit Mal Seizures)  
PE-959 Appendicitis  
PE-909 Asthma  
PE-845 Attention Deficit Hyperactivity Disorder  
PE-639 Autism  
PE-847 Bed Wetting (enuresis)  
PE-645 Cerebral Palsy (cp)  
PE-81 Chickenpox (varicella)  
PE-849 Child Abuse  
PE-825 Cleft Lip And Palate  
PE-851 Colic  
PE-853 Croup (laryngotracheobronchitis)  
PE-855 Cystic Fibrosis (cf)  
PE-87 Diaper Rash  
PE-89 Discoid Lupus Erythematosus  
PE-653 Down Syndrome (Trisomy 21; Mongolism)  
PE-511 Ear Ache, Child (otitis Media)  
PE-289 Encopresis, Child (Fecal Incontinence)  
PE-515 Epididymitis  
PE-655 Epilepsy (Seizures)  
PE-657 Fever Seizures, Child (Febrile Seizures)  
PE-97 Fifth Disease  
PE-659 Friedrich's Ataxia  
PE-661 Generalized Tonic-clonic Seizures  
PE-623 Glomerulonephritis  
PE-187 Gynecomastia  
PE-103 Hand-Foot-Mouth Disease (HFMD)  
PE-451 Hemophilia  
PE-105 Henoch-schonlein Purpura (Allergic Purpura; Anaphylactic Purpura), Child  
PE-531 Herpangina  
PE-983 Hypospadias  
PE-459 Jaundice, Newborn  
PE-945 Juvenile Rheumatoid Arthritis (JRA)  
PE-947 Kawasaki Disease (KD)  
PE-543 Lice (pediculosis)  
PE-857 Marfan's Syndrome

PE-115 Measles (Rubeola)  
PE-553 Meningitis  
PE-555 Mononucleosis  
(Mono; Kissing Disease)  
PE-557 Mumps  
PE-629 Nephrotic Syndrome (Nephrosis)  
PE-859 Obesity (Weight Control), Child  
PE-829 Oral Health Care (Dental Care)  
PE-787 Osgood-schlatter Disease  
PE-687 Partial Motor Seizures  
PE-933 Pertussis (Whooping Cough)  
PE-989 Phymosis, And Paraphymosis  
PE-571 Pinworms, Child  
PE-335 Pyloric Stenosis  
PE-587 Rheumatic Fever  
PE-137 Scabies  
PE-139 Scarlet Fever, Child  
PE-805 Scoliosis, Child  
PE-809 Slipped Femoral Epiphysis, Child  
PE-727 Strabismus (Lazy Eye)  
PE-61 Tetralogy of Fallot  
PE-843 Tonsillitis  
PE-861 Tourette's Syndrome  
PE-229 Turner's Syndrome  
PE-995 Undescended Testicle (Cryptorchidism)  
PE-65 Ventricular Septal Defect (VSD)  
PE-863 Vitamin D Deficiency  
(Rickets; Osteomalacia)  
PE-343 Wilson's Disease

PSM 51 Apgar Score Chart

**PEDIATRICS Disease models**

AM 207 Small Pox  
AM 208 Chicken Pox  
AM 210 Mumps  
AM 224 Measles  
AM 230 Polio myelitis  
AM 235 Tonsil  
AM 241 Goiter  
AM 244 Diphtheria  
AM 247 Scurvy  
AM 250 Kwashiorkor



AM 224



PE 945



## Nutrition Charts

Size 20"x26" Laminated & Fitted with Plastic Strip **OR**

Size 20"x26" Laminated & Framed on NU-Wood Board

Food/Nutrition  
+First Aid

Charts

- 9776 Risk of obesity.
- 9779 Weight Control.
- 9894 Keys to Healthy Eating.
- CH1352. Daily allowance of Vitamins (Infants, Children, Adolescent, Men, Women).
- CH 1352A Recommended Dietary allowances For Indians.
- CH1353. Daily Allowance of Nutrients.
- CH 1353A Some Nutrient-rich Foods-I.
- CH 1353 B Some Nutrient-rich Foods-II.
- CH 1353C Some Nutrient-rich Foods-III.
- CH1354. Balance Diet for Preschool Children (1 to 6years).
- CH 1354a Balanced Diet For Adult Man (Sedentary).
- CH 1354B Balanced Diet for Adults - (Sedentary).
- CH 1354C Approximate Calorific Value Of Nuts, Salads And Fruits.
- CH 1354G Approximate Calorific Value Of Some Cooked Preparations.
- CH 1354D Vegetables And Fruits With High Calorie Value (>100 kcal).
- CH 1355. Balance Diet for School Children (7 to 18 years).
- CH1356. Balance Diet for Normal Pregnant ( Lactating Women).
- CH 1356A Portion Sizes And Menu Plan
- CH1357. Balance Diet for old people (over 60 years)
- CH1358. Height weight Table for Normal Adults (Man & Women)
- CH1359. Reducing diets & weight maintenance diet for Adults.
- CH1360. Nutritive Value of Common Indian Recipes.
- CH 1360A Sample Meal Plan For Adult Man (Sedentary).
- CH 1360B Sample Meal Plan For Adult Woman (Sedentary).
- CH 1361. Recipes for Balance diets for Preschool Children/ Pregnant & Nursing Women.
- CH1362. High & Low Calorie diets for Adults.
- CH1363. Diet for diabetic of Varying Ages with Normal Body weight. (Male & Female)
- CH1364. Diet & Daily menu for an adult suffering from High Blood Pressure.
- CH1365. Diet & Daily menu for an adult suffering from Renal Calculi.
- CH1366. Diet & Daily menu for an adult suffering from Chronic Gout.
- CH 1367. Diet & Daily menu for an adult suffering from high Fever.
- CH 1368. Diet & Daily menu for an adult suffering from Constipation.

- CH 1370. Fibers
- CH1370A Vitamins Sources & Deficiency
- CH 1371. Fats
- CH1372. Proteins
- CH 1373. Minerals
- CH 1374. Carbohydrates
- CH 1375 Importance Of Diet During Different Stages of Life
- CH 1377 Exercise And Physical Activity
- CH 1378 Energy Costs Of Physical Activities
- CH 1382 Drinking Water Standards
- CH 1383 WHO New Growth Standards Standard Deviation
- CH 1384 B.M.I. Anthropometric Standards



CH 1354G



CH 1370A

## First Aid Charts

Size 20"x26" Laminated & Fitted with Plastic Strip **OR**

Size 20"x26" Laminated & Framed on NU-Wood Board

- |  |                                       |
|--|---------------------------------------|
| 6850 Bite (Snake & Animal)                       | 6997 Fracture                         |
| 6880 How poisons Affect The Body                 | 6998 Roller Bandages                  |
| 6885 Action In An Emergency                      | 6999 Triangular Bandages              |
| 6888 Burns                                       | 7000 Drowning                         |
| 6900 Poisoning (Drug & Alcohol)                  | 7001 Inhalation of Fumes              |
| 6901 Poisoning (Food Plant and Fungi)            | 7002 Treatment of some common poisons |
| 6920 Management of Asthma                        |                                       |
| 6925 Symptoms & signs of acute alcohol poisoning |                                       |
| 6950 Types of Wounds                             |                                       |
| 6989 Choking Adult                               |                                       |
| 6990 Choking Child                               |                                       |
| 6991 Choking Infant                              |                                       |
| 6995 CPR Adult                                   |                                       |
| 6996 CPR Children                                |                                       |

**Also Available**  
**All Deptt. Homeopathic/Ayurvedic**  
**Medical Charts & Models**



6997

## Models on Hygiene &amp; Public Health

- AM 167. Insanitary Well
- AM 168. Sanitary Well
- AM 169. Step Well
- AM 170. Deep Well
- AM 171. Deep Tubewell
- AM 172. Slow Sand Filter
- AM 173. Rapid Sand Filter
- AM 174. Pastuer's Chamber Sand Filter

## Soil Sanitation

- AM 175. Berkefeld Filter
- AM 176. PIT Laterine (Dug well lateriane)
- AM 177. Bore Hole Laterine
- AM 178. Trench Laterine
- AM 178A. Sanitary Laterine
- AM 179. Septik Tank Laterine
- AM 180. House Drainage System
- AM 181. Activated Sludge Process
- AM 182. Incinerator (Beehive type)
- AM 183. RCA Laterine

OR



AM 168



AM 173



AM 172

## Patient Care Charts

Size 20"x26" Laminated & Fitted with Plastic Strip **OR**  
 Size 20"x26" Laminated & Framed on NU-Wood Board

Cardiology	42 Charts
Dermatology	63 Charts
Endocrinology	31 Charts
Enviromental Medicine	26 Charts
Gastroenterology	63 Charts
Gynecology	46 Charts
Hematology / oncology	64 Charts
Infectious Disease	120 Charts
Interdisciplinary Medicine	88 Charts
Nephrology	11 Charts
Neurology	50 Charts
Psychiatary	30 Charts
Surgery	30 Charts

**Midwifery Kit  
with article  
As per INC**

## Price List (2017-2018)

price

### Pg. No. 2 to 9 (Manikins)

Dbios-001 Multi-functional Nursing	Rs. 97800/-Each
Dbios-002 Female Nursing Manikin	Rs. 94900/-Each
Dbios-003 Basic Nursing Manikin	Rs. 64950/-Each
Dbios-004 Basic Nursing Manikin	Rs. 32900/-Each
IMP-92M Multi functional (Male)	Rs. 21000/-Each
IMP - 92P Multifunctional Patient (Female)	Rs. 18760/-Each
Dbios-005 Advanced Full-functional	Rs. 103900/-Each
IMP 104 New Born baby	Rs. 120000/-Each
IMP 105 One Year Pediatric	Rs. 110000/-Each
IMP 117A Patient Care Simulator	Rs. 185000/-Each
IMP 102 Pediatric Care Simulator 5yr	Rs. 124000/-Each
Dbios 0025 Three year old	Rs. 64400/- Each
Dbios-0026 Infant Nursing	Rs. 44000/-Each
IMP 610 PEDI Airway Trainer	Rs. 136600/-Each
IMP 612 Newborn PEDI	Rs. 116480/-Each

### Pg. No. 10 to 13 (CPR)

Dbios-0020 Full Functional Neonatal	Rs. 98900/-Each
IMP 102 A Five Year CPR and trauma	Rs. 214400/-Each
Dbios-022 Nursing Manikin Adult	Rs. 183400/-Each
Dbios-0032 CPR: Child and Adult	Rs. 22680/- Each
IMP 115 B CPR Simon BLS Adult	Rs. 234900/-Each
IMP-115A Multi purpose simulator Adult	Rs. 492500/-Each
Dbios-0030 Half Body CPR Training AED	Rs. 99900/-Each
Dbios-0031 Basic CPR Training (Half Body)	Rs. 43400/-Each
IMP 136 Fat Old Fred Manikin	Rs. 46000/-Each
IMP 116B Economy CPR Adult Manikin	Rs. 21000/-Each
IMP 130 Little Junior™ CPR Manikin(Child)	Rs. 33000/-Each

### Pg. No. 14 (Suture & I.V. Training Arm)

IMP 131 Baby Anne™ Manikin (Infant)	Rs. 31000/-Each
Dbios-0040 Adult Airway Management Model	Rs. 118400/-Each
JP 302 Advanced Half-length CPR	Rs. 110000/-Each
Dbios-0041 Adult Airway Intubation	Rs. 76800/-Each

### Pg. No. 15 - 16 (Suture & I.V. Training Arm)

Dbios-0050 Surgical Suture Arm	Rs. 25200/-Each
Dbios-0051 Surgical Suture Leg	Rs. 28600/-Each
Dbios-0054 Advanced Blood Pressure	Rs. 62900/-Each
Dbios-0053 Surgical Suturing	Rs. 78900/-Each
Dbios-0060 Venipuncture Training Arm	Rs. 29600/-Each
Dbios-0061 Venipuncture & Intramuscular	Rs. 38900/-Each
Dbios-0062 Suture Training Pad (with stand)	Rs. 3200/-Each
IMP 125 A Advanced Multipurpose Venous	Rs. 60920/-Each
IMP 125 B Intravenous Training Arm	Rs. 52250/-Each
IMP 125 E One Year Injection Arm	Rs. 48750/-Each

### Pg. No. 17 to 21 (Maternal & Infant Training)

Dbios 0035 Cervical Lesion	Rs. 24000/- Each
IMP 100A Labor Delivery Module	Rs. 45000/-Each
IMP 100 Advanced Childbirth Simulator	Rs. 85000/- Each
IMP 152 ZOE Gynecologic Simulator	Rs. 90000/- Each
Dbios-0070 Maternal and Neonatal	Rs. 318900/-Each
Dbios-0072 Vacuum Deliver Simulator	Rs. 32900/-Each
Dbios-0071 Maternal Simulator	Rs. 168000/-Each
IMP-100G Human Reproduction	Rs. 65400/-Each
Dbios-0073 Difficult Labor Simulator	Rs. 34900/-Each
Dbios-0074 Advanced Abdominal Palpation	Rs. 132800/-Each
Dbios-0075 Advanced Labour Simulator	Rs. 119900/-Each

Dbios-0076 Advanced Childbirth	Rs. 81200/-Each
Dbios-0080 Artificial Abortion	Rs. 28900/-Each
IMP 100 C GYN/AID Gynecologic	Rs. 81900/-Each
IMP 153 Hysteroscopy Simulator.	Rs. 81900/-Each
Dbios-0090 Gynecological	Rs. 98800/-Each
Dbios-0091 Maternity Examination	Rs. 95800/-Each
Dbios-0092 Perineum Suturing	Rs. 10900/-Each
IMP 107 A Postpartum Suturing	Rs. 28300/-Each

### Pg. No. 22 (Charts)

Charts Fitted with Plastic Strip	Rs. 800/- Each
Charts Mounted Framed on Board	Rs. 1400/- Each
Dbios Rexine Charts 30x40"	Rs. 480/- Each

### Pg. No. 23 to 25 (Gynae)

Am183 Series Demonstration	Rs. 27500/-Each
Am83B Cell to Embryo	Rs. 9000/- Each
AM 79B Human Development of	Rs. 31900/- Each
AM 79A Fertilization and Development	Rs. 42600/- Each
AM 98 Human Female Pelvis	Rs. 3900/- Each
AM-80C&D Fetal & Maternal	Rs. 6000/- Each
AM 498A Female Pelvis	Rs. 5000/- Each
IMP-258A Infant Skull	Rs. 5000/- Each
IMP-353B Stages of Fetus	Rs. 16500/- Each
IMP 280B Female Inner	Rs. 9500/- Each
AM 85 Uterus in 9th month	Rs. 6500/- Each
AM 84A Demonstration Model	Rs. 56900/- Each
AM 70A Mammary Gland in	Rs. 9800/- Each
AM 70B Mammary Gland	Rs. 9800/- Each
AM 70C Ovary Models (8 Part)	Rs. 32600/- Each
IMP 353C Human Embryo	Rs. 6200/- Each
AM 96A Model of Condom	Rs. 1000/-Each
AM 96B Tubectomy	Rs. 7000/-Each
AM 96C Vasectomy	Rs. 7000/- Each
AM 80A Model of Placenta	Rs. 8000/- Each
AM 97A Foetal Skull	Rs. 2000/- Each
AM 80C Maternal Placenta	Rs. 6000/- Each
AM-77 Spermatozoon	Rs. 6000/- Each
IMP 380B Fertilization Process	Rs. 23900/- Each
AM 53A Imported-Fetal	Rs. 24900/-Each
AM 98A OBST. Pelvic	Rs. 8000/-Each
Dbios-0100 Pelvis with fetal head	Rs. 21400/-Each
Dbios-0101 Pelvimetry	Rs. 8240/-Each
IMP 106E Rubber Baby with placenta	Rs. 8200/- Each
IMP 106T New born baby	Rs. 4000/- Each
Community Bag with Article	Rs. 2900/- Each

### Pg. No. 26 to 28 (Man & Woman Health)

Dbios-0093 IUD Training	Rs. 10650/-Each
IMP 154 Uterus II	Rs. 2250/-Each
IMP 155 Uterus	Rs. 3450/-Each
AM 89 Foetus Delivery	Rs. 12000/-Each
PM 23A Uterus Ovary	Rs. 9800/- Each
IMP 4336C Female Perineum	Rs. 8680/- Each
AM 83C Human Development	Rs. 8000/- Each
Dbios-0110 Male Condom Model	Rs. 5600/-Each
<b>Pg. No. 26 to 28 (Man &amp; Woman Health)</b>	
Dbios-0111 Female Catheterization	Rs. 9800/-Each
Dbios-0112 Male Catheterization	Rs. 9800/-Each

## price

## Model & Charts

Dbios-0115 NSV Model	Rs. 21900/- Each	IMP 333 C Kidney on Stand	Rs. 6720/- Each
IMP 151 Multipurpose Male	Rs. 97500/- Each	IMP 336 A Female Pelvis	Rs. 5500/- Each
IMP 148 Advanced Patient Care	Rs. 82000/- Each	IMP 337 Female Genital Organs	Rs. 15120/- Each
IMP 141 Breast Model	Rs. 21000/- Each	IMP 126 Human Skeleton	Rs. 14500/- Each
IMP 143 Nonsexual Breast	Rs. 28000/- Each	A-80 Shoulder Joint	Rs. 4000/- Each
Dbios 120 Inspection and Palpation	Rs. 74200/- Each	A-81 Hip Joint	Rs. 4000/- Each
PHM 1 to 11 Physiology Models	Rs. 11x 9800/- Each	A-82 Knee Joint	Rs. 4000/- Each
<b>Pg. No. 29 to 30 (Anatomy Models)</b>		A-83 Elbow Joint	Rs. 4000/- Each
A-86 Adult Leg	Rs. 9000/- Each	A-84 Wrist Joint	Rs. 4000/- Each
A-87 Adult Arm Bone	Rs. 9000/- Each	A-85 Ankle Joint	Rs. 4000/- Each
IMP 1 Male Muscle Figure	Rs. 45000/- Each	Am103. Disarticulated Skeleton	Rs. 11800/- Each
IMP 284 MICRO Anatomy Kidney	Rs. 19100/- Each	IMP 337B Anatomical Uterus	Rs. 6500/- Each
DC- 121 Unisex Torso 85 CM	Rs. 13500/- Each	<b>Pg. No. 31 to 32 (Charts )</b>	
IMP 328 Brain	Rs. 14840/- Each	Charts Fitted with Plastic Strip	Rs. 800/- Each
IMP 314 Eyeball	Rs. 8000/- Each	Charts Mounted Framed on Board	Rs. 1400/- Each
IMP 322A Spinal Cord in spinal canal	Rs. 24200/- Each	<b>Pg. No. 32 (Pediatrics Models)</b>	
IMP 305 Larynx	Rs. 5040/- Each	AM 207 Small Pox	Rs. 6000/- Each
IMP 309 Heart, lung and Larynx	Rs. 8000/- Each	AM 208 Chicken Pox	Rs. 6000/- Each
IMP 313 Anatomical Heart Model	Rs. 4800/- Each	AM 210 Mumps	Rs. 6000/- Each
IMP 312 Anatomical Heart Model large	Rs. 12000/- Each	AM 224 Measles	Rs. 6000/- Each
AM 65A Reproductive Male	Rs. 7000/- Each	AM 230 Polio mylitis	Rs. 6000/- Each
AM 66A Reproductive Female	Rs. 7000/- Each	AM 235 Tonsil	Rs. 6000/- Each
IMP 337A Excretory system	Rs. 5000/- Each	AM 241 Goiter	Rs. 6000/- Each
IMP 309C Digestive System	Rs. 11000/- Each	AM 244 Diptheria	Rs. 6000/- Each
IMP 333B Kidney, Nephron	Rs. 8000/- Each	AM 247 Scurvey	Rs. 6000/- Each
IMP 352 Block Skin	Rs. 7000/- Each	AM 250 Kwashiorkor	Rs. 6000/- Each
IMP 262A Teeth.	Rs. 3000/- Each	<b>Pg. No. 33 to 34 (Charts )</b>	
IMP 309 B Human Stomach	Rs. 4500/- Each	Charts Fitted with Plastic Strip	Rs. 800/- Each
IMP 317 EarModel	Rs. 8000/- Each	Charts Mounted Framed on Board	Rs. 1400/- Each
IMP 335 Male Genital organ	Rs. 15120/- Each	<b>Pg. No. 34 (Health &amp; Hygiene )Models</b>	
IMP 332 A Spleen, Pancreas	Rs. 5880/- Each	AM 167 to 179	Rs. 6000/- Each
		AM 181 to 183	Rs. 9000/- Each
		Midwifery Bag With Articles	Rs. 2990/- Each