

ABOUT US

With an aim to serve the ever rising demands for Solar Power Equipment's, we *MJR Solar*, since 1999, is a very progressing organization in the discipline of Solar Power Equipment's, by bringing not only the latest technology, but also improvising the house product quality.

We primarily deal in high quality Solar Home Lighting System, Solar Area LED Lighting System, Solar LED Street Lights, Solar LED Warning Lights, Solar Led Traffic Blinkers, Solar Power Inverters, Solar Water Heaters, Fishing Boat Solar Light Systems, Solar Garden Lights, Solar Powered Marine Navigational Lights etc...

We operate business from our corporate headquarters in Navi Mumbai, supplying top grade Solar power Equipment. These products are designed to precision, as per exact specifications and requirements of buyers. Additionally, we customize and package our products, to suit specific packing preferences of our esteemed clientele.

We have all the resources in place, that allows us to offer repair services, easy replacement parts, marketing & sales, installation & commissioning, recondition and consultancy services, in strict congruence with our client's requirements.

Our company has established excellent business relations with our clients by providing quality products and services at market leading prices.

We have gained a good position in the market segments due to constant support and guidance of our able Top Management. With the transparent and ethical business practices, we are able to attain a wide client base across the country.

Our unending efforts in pursuit of excellence, in all areas of operations, Quality, Innovation, Product development etc. have earned, the firm a high standing in the market place.



Sales, Services & Consultancy of:

Office # 321, The Commodity Exchange, Sector-19, Vashi, Navi Mumbai - 400 703.

Tel.: +91-22-6511 3669 / 6511 4150, Fax: +91 - 22- 2784 2969

Mob.: +91 98201 36798 / 90228 99888 / 80970 36798 / 99672 27699

Web.: www.mjrcorpn.com / www.mjrcorporation.com

Email: solar@mjrcorpn.com / mjrcorpn@vsnl.net



MJR SoLED

MJR SoLAR



Sales, Services & Consultancy of:
LED & SOLAR POWER EQUIPMENT

Office # 321, The Commodity Exchange,
Sector-19, Vashi, Navi Mumbai - 400 703.

Tel.: +91-22-6511 3669 / 6511 4150,

Fax: +91 - 22- 2784 2969

Mob.: +91 98201 36798 / 90228 99888 /
80970 36798 / 99672 27699

Web.: www.mjrcorpn.com

E-mail: solar@mjrcorpn.com / mjrcorpn@vsnl.net

HOME LED LIGHTS



5W LED BULB NEW

PRODUCT CODE	MJR BLB 1192
PCB DIA (MM)	40
DRIVER AREA (MM)	30 X 25
WEIGHT (GM)	60
PCB CONFIGURATION*	5 S 2 P
DRIVER SPECIFICATION	1 = 350 MA, V = 18 V

MJR Corporation®



9W DOWN LIGHT ECO

PRODUCT CODE	MJR DLE 1027
OUTER DIMENSION (MM)	130
CUTOUT DIMENSION (MM)	110
WEIGHT (GM)	65

MJR Corporation®



7W LED BULB NEW

PRODUCT CODE	MJR BLB 1193
PCB DIA (MM)	50
DRIVER AREA (MM)	40 X MM
WEIGHT (GM)	95 GM
PCB CONFIGURATION*	7 S 2 P
DRIVER SPECIFICATION	1 = 350 MA, V = 24 V

MJR Corporation®



15W ES SQUARE DOWN LIGHT

PRODUCT CODE	MJR ESS 1106
OUTER DIMENSION (MM)	160 X 160
CUTOUT DIMENSION (MM)	140 X 140
LED AREA (MM)	97 X 97

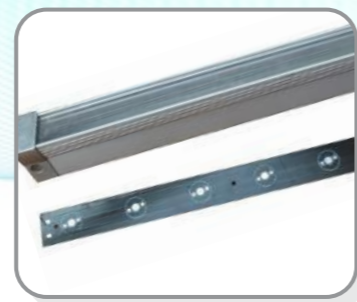
MJR Corporation®



T8 TUBE LIGHT

PRODUCT CODE	MJR BLB 1192
CLEAR	MJR TL 1011P
MILKY	MJR TL 1011C
PCB AREA (MM)	1160 (L) X 18.5 (W)
DRIVER AREA (MM)	1160 (L) X (W) X 15(H)

MJR Corporation®



WALL FLASHER

PRODUCT CODE	MJR WW 1011H
PCB AREA (MM)	550 (L) X 32 (W)
DRIVER AREA (MM)	550 (L) X 30 (W) X 15 (H)

MJR Corporation®

INFRASTRUCTURE

ELECTRICAL & SECURITY



DG SET

10KVA - 1000KVA

Power solution is the fastest growing Gen set.

MJR Corporation®



INTERCOM SYSTEM

FLAT TO FLAT / FLAT TO SECURITY / SECURITY TO FLAT COMMUNICATION
EMERGENCY REPORTING
AUTO CALL BACK TO SECURITY
DIGITAL DISPLAY AT THE SECURITY OR AT ANY PREDETERMINED PLACE.

MJR Corporation®



VIDEO DOOR TELEPHONE

Camera will be installed in door unit, shows the visitor standing in front of the door.

COLOR TFT LCD MONITOR

LARGE DISPLAY SIZE: 5.6" LCD

INTERFACE FOR DOOR STRIKE/DOOR OPEN

THE VISITOR'S IMAGE IS CAPTURED AND STORED IN THE MEMORY CARD

MJR Corporation®



CCTV CAMERAS

IMAGE SENSOR 1/3" HIGH SENSITIVITY SENSOR

VIDEO FORMAT PAL/NRSC

RESOLUTION 600TVL

VOLTAGE DC12V

MJR Corporation®

SOLAR POWER INVERTERS



300VA, 600VA, 800VA, 1400VA etc...

FISHING BOAT SOLAR LIGHT SYSTEM



FISHING BOAT SIGNAL LIGHT:
(RIGHT, LEFT, CENTER)
CABIN LIGHT: (TUBE & BULB)

SOLAR WATER HEATER



100LPD - ANY... CAPACITY

HOME SOLAR POWER SYS.



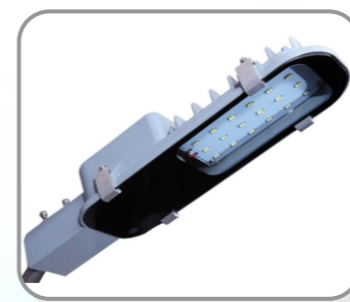
300VA, 600VA, 800VA, 1400VA etc...



HIGHWAY COB 50W

PRODUCT CODE	MJR HBY 1020 (WITH LENS)
DIA (MM)	160
DRIVER AREA (MM)	230 X 145 X 50
LENGTH (MM)	70, DOME FOR BOTH = 360 DEGREE

MJR Corporation®



12W STREET LIGHT PDC ECO

PRODUCT CODE	MJR SL 1071
DIMENSION (MM) -	130(L)X70(W)X12(H)
LED AREA	
DRIVER AREA (MM)	100(L)X70(W)X40(H)
PIE DIA (MM)	40
WEIGHT (KG)	0.7

MJR Corporation®



20W STREET LIGHT PDC ECO

DIMENSION (MM) -	80(L)X100(W)X20(H)
LED AREA	
DRIVER AREA (MM)	85(L)X110(W)X45(H)
PIE DIA (MM)	50
WEIGHT (KG)	1.1

MJR Corporation®

AREA LED LIGHTING



60W STREET LIGHT PDC ECO

PRODUCT CODE	MJR SLF 1004A
DIMENSION (MM) -	175(L)X165(W)X15(H)
LED AREA	
DRIVER AREA (MM)	165(L)X100(W)X45(H)
PIE DIA (MM)	65
WEIGHT (KG)	2.7

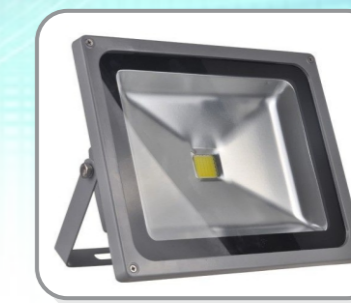
MJR Corporation®



POST TOP / GL 30W ENCL

PRODUCT CODE	MJR LD 1033A
PCB AREA (MM)	200 X 200
DRIVER HEIGHT (MM)	100

MJR Corporation®



100W FLOOD LIGHT ECO

PRODUCT CODE	MAK FLE 1022
DIMENSION (MM) -	90(L)X50(W)X17(H)
LED AREA	
DRIVER AREA (MM)	70(L)X43(W)X25(H)
WEIGHT (KG)	1.0

MJR Corporation®

AREA LED LIGHTING



90-120W FLOOD LIGHT ECO	
PRODUCT CODE	MJR FLE 12005B
DIA(MM) - LED AREA	275(L)X265(W)X15(H)
DRIVER AREA (MM)	290(L)X160(W)X50(H)
WEIGHT (KG)	7.78
PIPE DIA (MM)	65

MJR Corporation®



100W FINIX FLOOD LIGHT	
PRODUCT CODE	MJR FFL 1189
DIA (MM) - LED AREA	130(L)X260(W)X35(H)
DRIVER AREA (MM)	65(L)X230(W)X40(H)
WEIGHT (KG)	3.1

MJR Corporation®

LED LIGHTING



24W COOL DOWN LIGHT	
OUTER DIMENSION (MM)	225
CUTOUT DIMENSION (MM)	200
PCB AREA (MM)	120

MJR Corporation®



TRAFFIC LED SIGNAL LIGHT	
230 VAC	
24 HRS FLASHING	
LONG LASTING	
EASY TO INSTALL	

MJR Corporation®



ECO

20W SOLAR STREET LIGHT PDC	
PRODUCT CODE	MJR SL 1001A
DIA(MM) - LED AREA	200(L)X95(W)X15(H)
PIPE DIA (MM)	35
WEIGHT (KG)	1.2
TYPE (W)	12, 18, 24, 30, 40 etc.

MJR Corporation®



SOLAR LED TRAFFIC BLINKERS

24/12 - HOUR FLASHING BEACON SYSTEM
 AVAILABLE IN SINGLE / DOUBLE ASPECTS
 LOW-COST INSTALLATION - EASY & QUICK
 DEPLOYED AT ANY LOCATION
 LED BEACONS - LONG -LIFE WITH EXTREMELY
 LOW POWER CONSUMPTION
 VIRTUALLY MAINTENANCE FREE DESIGN
 VANDAL AND THEFT RESISTANT COMPONENTS AND HARDWARE
 AVAILABLE WITH RED/ AMBER COLORED LEDs
 LED FLASHING RATE: ABOUT 50 FLASHES / MINUTE
 LED LAMP: NO. OF LEDs - 140 LEDs, INTENSITY - 200 CD (MIN)

MJR Corporation®

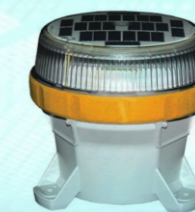
SOLAR POWERED LIGHTS



SELF - CONTAINED SOLAR WARNING LIGHTS

SOLAR CELL FLASHING - HIGH BRIGHTNESS LED TYPE WITH NO NEED OF POWER SUPPLY AND WIRING.
 POSSIBLE TO MAKE THE SYSTEM WITH AUTOMATICALLY DETECTS THE CONDITION OF DARKLING.
 O-RING EXPOSED TO OUTSIDE IS MADE OF HEAT RESISTING & ANTI-CORROSION SILICON.
 LENS COLOR **R A G**
 3 HOURS OPERATING TIME BY REACHING ONE TIME.
 MATERIAL: LENS - AS, BODY-ABS, REFLECTOR - HEAT RESISTING ABS
 CERTIFICATE - CE
 PROTECTION CLASS: IP54

MJR Corporation®



SELF - CONTAINED SOLAR WARNING LIGHTS

UP TO 10 CD OF INTENSITY (STEADY-ON, GREEN, EQUATORIAL)
 REPLACEABLE AND RECYCLABLE BATTERY PACK
 INTUITIVE ON-BOARD USER INTERFACE
 DUSK-TO-DAWN OPERATION
 OPTIONAL EXTERNAL SWITCH
 INTELLIGENT DEPLOYMENT LOCATION SETTINGS PROTECT AGAINST IMPROPER CONFIGURATION

THE A650 IS A SELF-CONTAINED, HIGH PERFORMANCE , LOW MAINTENANCE AND EASY-TO-INSTALL SOLAR-POWERED LIGHT SOURCE FOR AVIATION AND INDUSTRIAL ENVIRONMENT.

APPLICATION:
 INCLUDE - TAXI WAY EDGE LIGHTING - APRON EDGE LIGHTING - EMERGENCY AIR FIELD & HELIPAD LIGHTING - CONSTRUCTION BARRICADE LIGHTING ON AIR FIELD AND OBSTRUCTION LIGHTING

MJR Corporation®



FIRE DETECTION & ALARM SYSTEMS