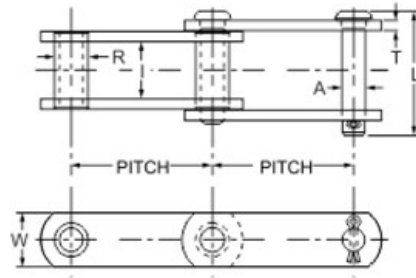
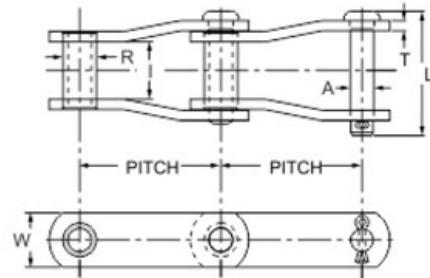


BUSHED CHAINS



Straight Link



Crank Link



Technical Specifications

CHAIN NO.	PITCH P	BREAKING LOAD KGS	PIN		BUSH		LINK	
			A Ø	L APP	R Ø	I	W	T
TB 026	66.26	11000	12.70	62.0	21.43	27.50	30.0	5.0
TB 080	80.00	30000	19.70	105.0	40.00	40.00	60.0	10.0
TB 040	101.60	10000	15.70	90.0	23.80	54.00	40.0	5.0
TB 041	101.60	10000	15.70	70.0	23.80	32.00	40.0	5.0
TB 042	101.60	12000	15.70	77.0	35.00	35.00	50.0	6.0
TB 043	101.60	18000	15.70	112.0	25.00	54.00	40.0	10.0
TB 0125	125.00	12000	14.70	85.0	25.00	29.00	40.0	10.0
TB 0126	125.00	30000	20.00	98.0	30.00	44.00	65.0	8.0
TB 060	152.60	18000	15.70	115.0	32.00	54.00	40.0	10.0
TB 061	152.60	25000	17.90	102.0	32.00	50.00	50.0	8.0
TB 062	160.00	8000	14.10	64.0	20.00	25.00	40.0	5.0
TB 090	228.60	28000	19.90	106.0	32.00	50.00	65.0	10.0
TB 091	228.60	30000	25.40	150.0	63.50	63.50	65.0	12.7
TB 092	228.60	40000	25.40	150.0	44.45	63.50	70.0	14.0
TB 093	228.60	100000	38.10	165.0	60.30	76.20	90.0	16.0
TB 012	304.80	28000	19.80	96.0	35.00	45.0	65.0	8.0

• Bushed Chains are used for Varied Applications

ALL DIMENSIONS ARE IN MM.



An ISO 9001-2008 Certified Company