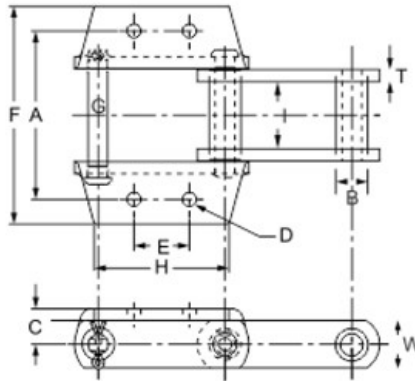
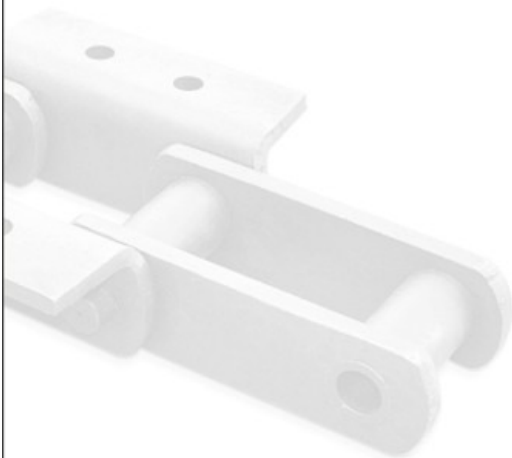


HEAVY DUTY ELEVATOR CHAINS



For Cement Industry

- These Chains are available in different styles of attachments such as K2, K24, K3, K44, K443 Etc.
- The Details of Above Attachments can be Obtained on Request.



Technical Specifications

CHAIN NO.	PITCH	BREAKING LOAD KG.	INNER WIDTH I	LINK		BUSH D	PIN G
				W	T		
TC - 110	152.4	16000	54.00	40.0	10.00	31.75	16.00
TC - 844	152.4	17000	63.50	50.0	12.70	30.00	19.00
TC - 856	152.4	37000	76.20	65.0	12.00	44.45	25.40
TC - 956	152.4	44000	75.00	75.0	12.00	44.45	25.40
TC - 857	152.4	44000	76.20	83.0	12.00	44.45	25.40
TC - 958	152.4	44000	76.20	83.0	14.00	55.80	28.70
TC - 859	152.4	70000	95.25	102.0	16.00	60.45	31.75
TC - 984	177.8	70000	95.25	102.0	16.00	63.50	35.00
TC - 4871	228.6	41000	85.85	75.0	12.00	44.45	25.40



An ISO 9001-2008 Certified Company

ALL DIMENSIONS ARE IN MM.