



Building Bright Futures with Smart Learning

Established more than 6000+ smart-classes across India

Trusted by **500+ leading institutions** nationwide, Nitek is the preferred choice for smart classrooms, training centers, and collaborative workspaces.



Max Series Hardware Features:



Zero bonding technology
for natural writing experience



Ultra-quiet fanless design



4mm tempered glass with
anti-glare protection



Industrial grade
aluminum frame

Essential apps included (Whiteboard, Annotate, Timer, etc.)



Max Series AI Features



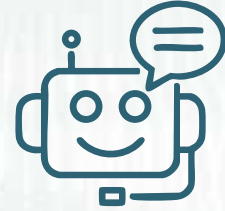
100+
Language
with OCR support



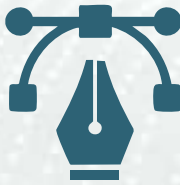
AI Powered



Math Solver



AI Chat



Multiple Pens



Teaching Aids

Android 14
8 GB, 128 GB



Tools

AI Tools

- Image Recognition
- Image OCR
- Text to Speech
- Speech to Text
- Math Solver
- Mind Maps
- Chat with AI

For Teachers

- Share Homework
- Check Assignments
- Create Reports
- Create Tests & Quizzes
- Generate Analysis
- Generate Ideas & Rubrics
- Generate Life Like Images

For Admins

- Monitor Usage
- Track Live Classes
- Decode Reports
- Manage Devices
- Create Data Insights
- Manage Content
- Track Lesson Progress

Standard Specifications

Size	65" 75" 86 inches(163.8cm)
Resolution	3840 x 2160 pixels @ 60Hz
Viewing Angle	H:178° V:178°
Brightness	400 cd/m ² ±10%
Connectivity	HDMI2.0 x2, USB3.0 x1, USB2.0 x2, SPDIF x1, RS232 x1, Touch USB x1, RJ45, Line in/Mic in(3.5mm) x1, Line Out/Earphone(3.5mm) x1
Power	145W normal, ≤0.5W standby
Weight	36 KG
Dimensions	1574mm x 200mm x 1001mm
Touch Points	20 simultaneous points(Andriod), 40 points (Windows)
OS	Android 14 with Quad-core Cortex-A37 1.4GHz
RAM/ROM	8 GB / 128 GB
Panel Dimensions	1483.8mm x 886.9mm x 115.7mm (W x H x D)
Display Type	TFT LCD (Direct-LED Backlight)
Touch Technology	Infrared Touch, 20 Point Touch (Android), 40 Points (Windows)
Display Area	1429mm(H) x 804mm(V)
CPU	CPU Octa core/Quad Core Cortex-A37, 1.4 GHz
Packed Dimensions	1574mm x 200mm x 1001mm
GPU	Mali-G52 MP2 (2EE)
Operating Temperature	0°C to 40°C (32°F to 104°F)
Pixel Pitch	0.372 (H) X 0.372 (W)
Certification	BIS, CE, FCC, RoHS
Power Consumption	Normal ≤145W, Standby ≤0.5W



Why Nitek?

- After Sales Service
- 98% Repeat Order Ratio
- Good Built Quality
- Good Software Quality
- Life Time Content Support
- Life Time Service Support



Contact Us

+91 79845 38488 | info@niftyprojects.in

www.niftyprojects.in

414, Vraj Valencia Building, Bh. Mahindra Showroom Umiya Villa Road, Science City Road, Ahmedabad, Gujarat-380060