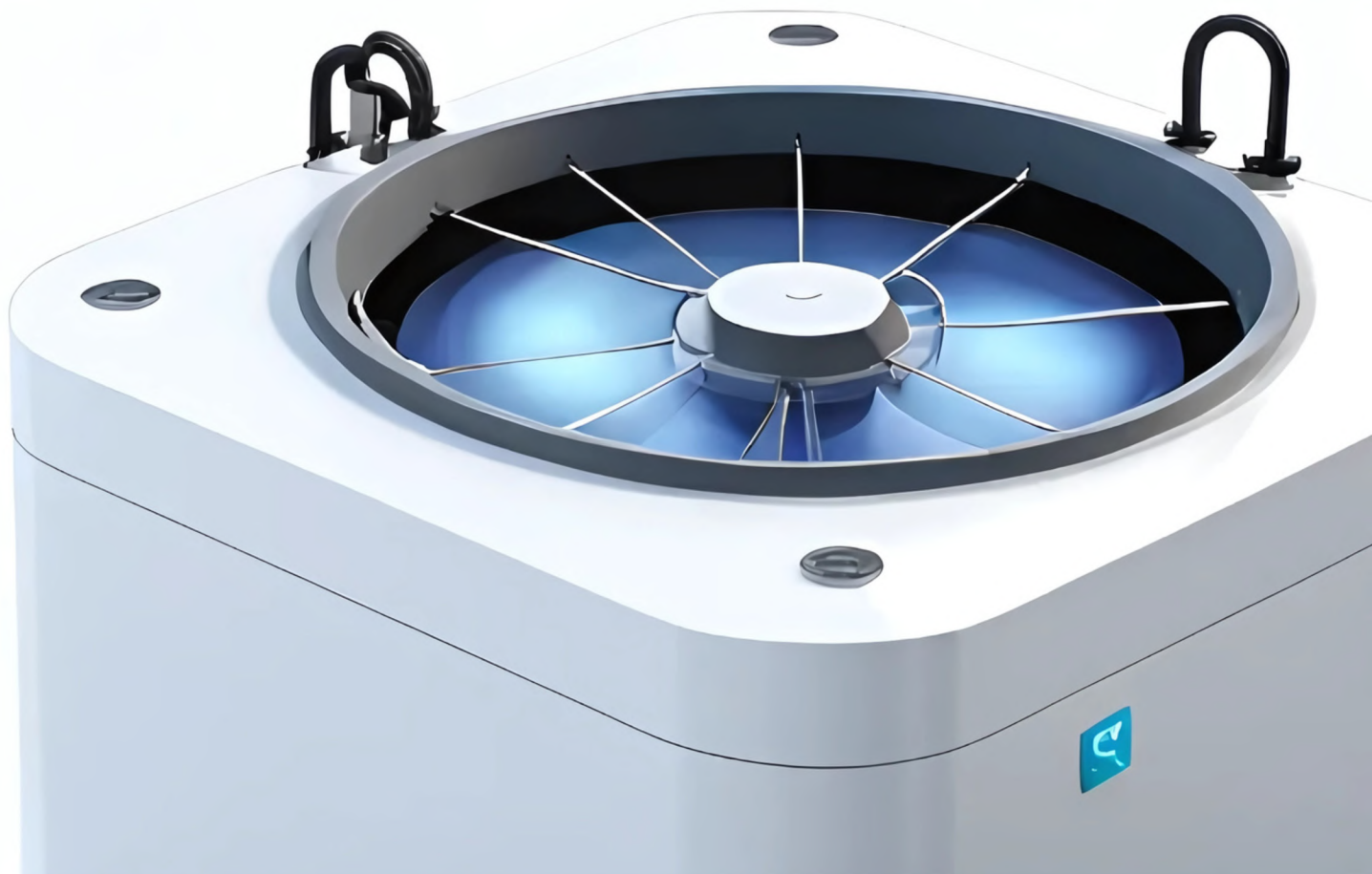


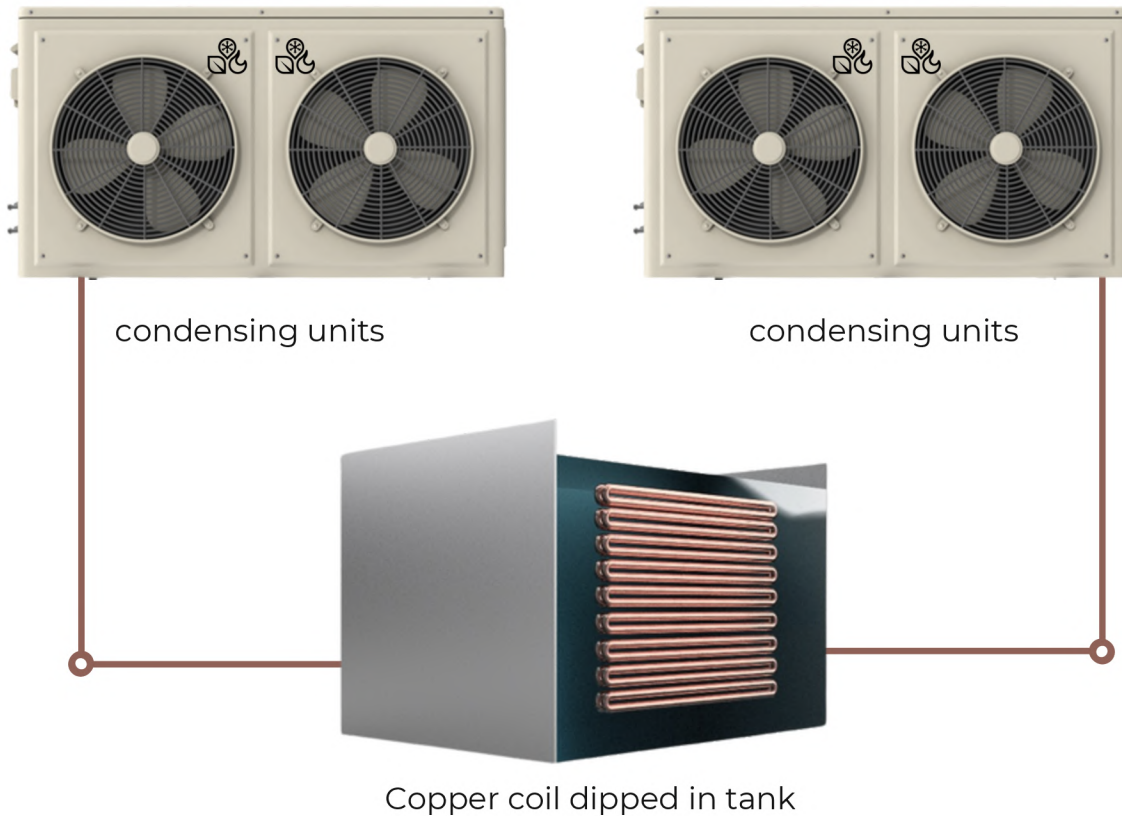
Redefine cooling with Smart Chillers

Specially Developed and Designed for Food Processing , Printing n Packaging , Plastic & Industrial Application Purposes. Successfully working in :

- Noble printing Press , Baddi
- Kumar printers , Manesar
- CDC Printers , Kolkata
- Sanat Printers , Kundli
- Mane Kancor , Baraeli
- Faiveley Technologies, Rohtak
- Print Shop , Naraina
- AOS Ingerdients , Ghaziabad

and Many more





MAKE YOUR CHILLER FREE IN 5 YEARS

With Copper Coil Dipped in Tank Technology

NO INTERNAL CIRCULATION PUMP

- Direct cooling with **no pump required** for internal circulation
- Save upto approx. ₹8 per kWh * 4.5 kWh (3 pumps of 1.5 Kw each) = **₹36 per hour.**
- Annual savings estimate (6,000 running hours): **₹2,16,000 per year (Approx.)**

NO BREAKDOWNS

- Unlike PHE or Shell & Tube , There is **no risk of freezing or leakage** and is easy to maintain with fewer potential failure points

DAIKIN UNITS

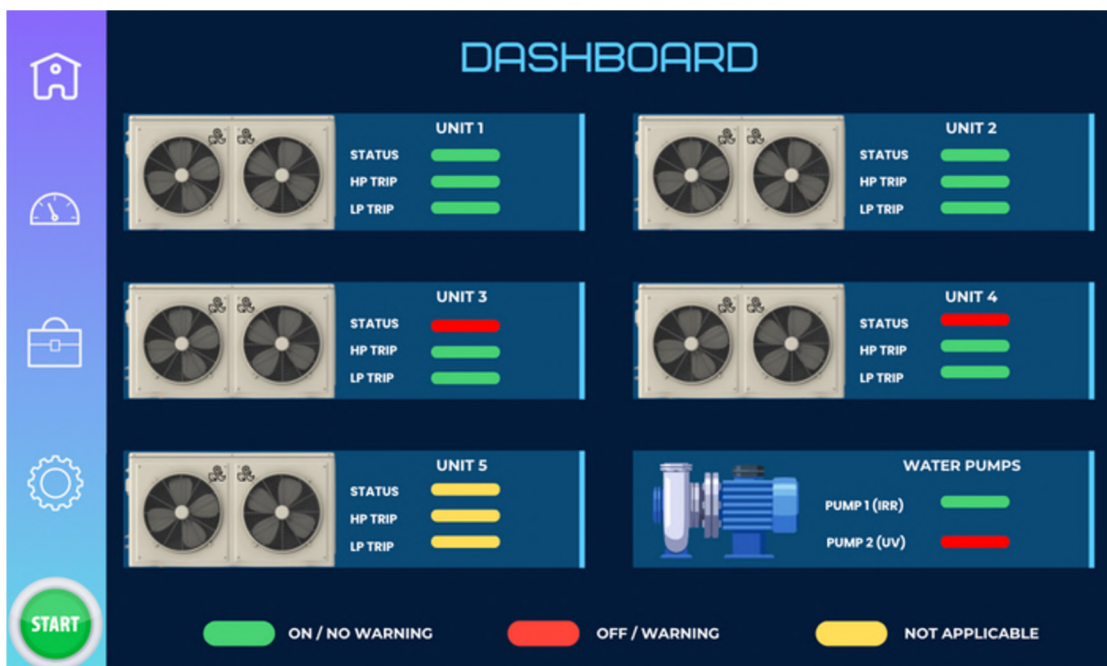
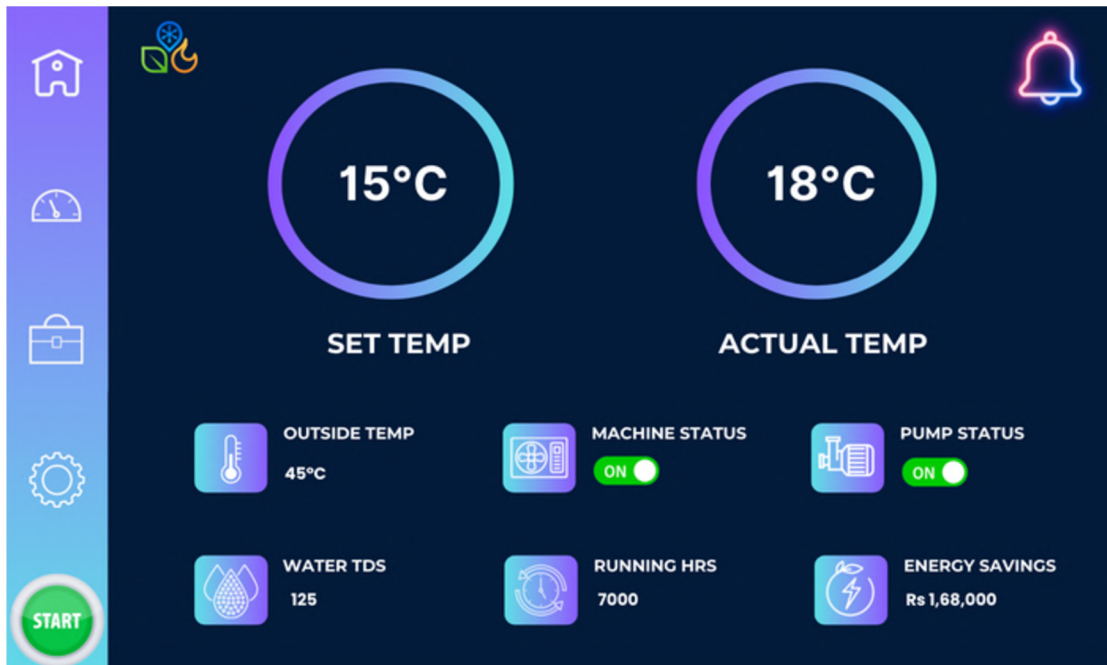
- High-efficient and reliable Daikin units, Designed for ambient temperatures **as high as 55°C**

ADVANCE CONTROL SYSTEM

- Both Automatic & Manual Control System
- Operation based on cooling requirement leading to load distribution and **energy savings**

OUR STATE OF ART CONTROL SYSTEM

The best chiller is not just the one that cools the most, but the one that wastes the least.



Note : We are developing and training **Machine Learning models** using operational data from multiple sensors to introduce **AI capabilities** into our chiller systems. This **will enable advanced features** such as automatic operation , predictive analytics for fault detection and maintenance, intelligent optimization of cooling performance. **The same will be added to our system without additional cost**



FEATURES

Smarter control means fewer breakdowns, lower costs, and better cooling.

ADVANCE AUTOMATION

- Our algorithms continuously analyse operational data and **adjust chiller performance** based on cooling demand.
- During low load, **only one unit runs**, while other units operate during peak demand.
- leading to **massive energy savings**.

EARLY FAULT DETECTION

- Built-in Sensors instantly **identifies anomalies or faults**,
- **Alert operators** immediately **before they escalate**, preventing downtime and costly breakdowns.

MACHINE CYCLING

- The system automatically **alternates the operation of Chiller units** to evenly distribute runtime,
- reduce wear and tear on individual units and extend the lifespan of units .

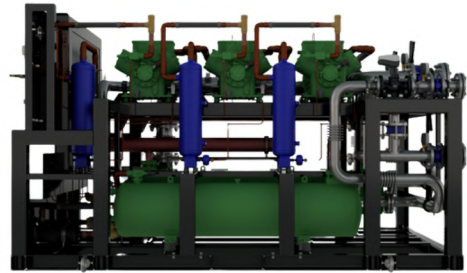
DATA LOGGING AND DUAL OPEARATIONS

- **Detailed performance insights**, for predictive maintenance and enhancing long-term reliability.
- **Both automatic and manual modes** for uninterrupted performance and flexibility based on user requirements

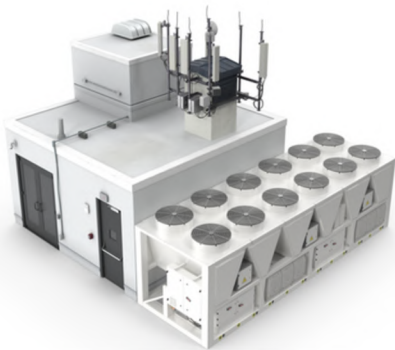
OTHER PRODUCTS/SERVICES



Air cooled Chillers



Water Cooled Chillers



Industrial Chilling Plant



**Humidification /
Dehumidification System**



Screw / Scroll Chillers



**-50C Double
stage chillers**



CONTACT US

DOSAJH INDUSTRIES PVT LTD



+91 9625777543
+91 9811590436



www.dosajh.com
www.precite.ai
www.dosajhindustries.in



Info@dosajh.com
dosajhindustries@gmail.com



C-6 , Dsiidc Engineering Complex , Mangolpuri Industrial Area ,
Ph-1 New Delhi - 110083



1519 , IMT Kharkhoda Industrial Area Haryana - 131402

