



Leading In....

LED Lighting





A Journey of 25 Years

OUR A BRIEF OVERVIEW

Olive Exports Pvt. Ltd. Incorporated in 1994 With its brand name "OLIVE LED" is Research, Design, Development, Engineering, manufacturing and customisation of energy saving LED-based lighting systems, all solutions for UVA, UVB & UVC LED solutions and electronic component/products company. The working of company is driven by a deep sense of social responsibility and commitment. As a customer-centric company practicing the best management techniques in employee engagement, Olive Exports has carved a place for itself in the highly competitive Indian LED-based lighting industry.



As a truly responsible company working in the larger national interest with the customer at its focus, Olive Exports with its strong R&D and design capabilities also has set the goal of developing the LED-based lighting industry in India. The company has over the years introduced innovative designs and modern technologies in its products to give the customer a truly satisfying international experience.



PRODUCT TECHNICALITIES

To cater to the wide customer base, Olive LED manufactures a variety of indoor and outdoor LED lighting and UVA, UVB & UVC products for both AC and DC input power supply. In addition, we also manufacture products for solar application with 12V DC input. Our speciality is that we manufacture products with a range of DC input like 12V, 24V, 48V, 90V, 110V or any other specific input power as specified by the customer.

Our company designs products to work on universal input range of 90V to 290V AC input while at the same time factoring in all adverse conditions like surge, spike and voltage fluctuations, under and over voltage protection. In case of specific adverse conditions on installation sites, we advise some extra protections like HVP, SPD & lightning protections as and when required.

At Olive LED, we use complete heat sink housing for fixing LEDs and the life of our housing is geared to support the expected life of LEDs, that is, approx. 50,000 hours or more. Further, ingress protection is also provided according to customer requirements. Our outdoor products are rated at minimum IP-65. Further, LEDs are soldered on MCPCB according to international standards adhering to complete curing process so as to protect the LEDs from moisture and humidity.

The drivers are designed to provide all possible protection against voltage and up to 10KV surge. Our products and the LED drivers are tested in our factory as per requirement of lighting products and these are suitable for universal input. The company has developed its own moulds for all the street lights, bay lights and flood lights after due R&D and design. As a result, many of our products have been patented by Government of India.

In the process, Olive LED has earned the reputation for providing 'True Value for Money'. Our strength is quality along with competitive pricing and our customer base includes many well-known national and international organizations.

When you think of LED-based lighting systems, Olive Exports is a natural choice. Backed by strong R&D facilities, a professional and qualified team, wide product range, international and national certifications, commitment to quality and excellent after-sales service, Olive Exports has over the years emerged as the leading player in India in the LED lighting industry.

Golden Temple



OUR INFRASTRUCTURE

Olive's excellence in LED lighting sector begins with a robust infrastructure. We have in place two state-of-the-art factories of 700 sq. mtrs each with installed capacity of 5000 PCS, a prudent team of R&D and quality experts, industry's best manpower, and a well organized supply and service chain.

Our manufacturing units are outfitted with the latest machineries and tools, including CAD/CAM for design, LED sensors, LED analyzer, ICT, ATE and much other instrumentation that make the high-end infrastructure for LED lighting production.

We also boast of a sophisticated research cell where intensive research and development activities are undertaken by our specialized team of R&D experts for product improvement in line with global market trends.

Further, we have a high-tech packaging unit, wherein packing of all our products is done using industry recommended materials under strict supervision of experts and in consonance with exact requirements of our esteemed clients.

With our up-to-date infrastructure we remain ready to customize products according to market demand. This also enables us to produce export quality products and meet the client's bulk requirements at a short notice and with the confidence of clients.



LED : BRIGHT LIGHT FOR SUSTAINABILITY

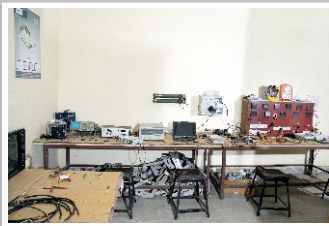
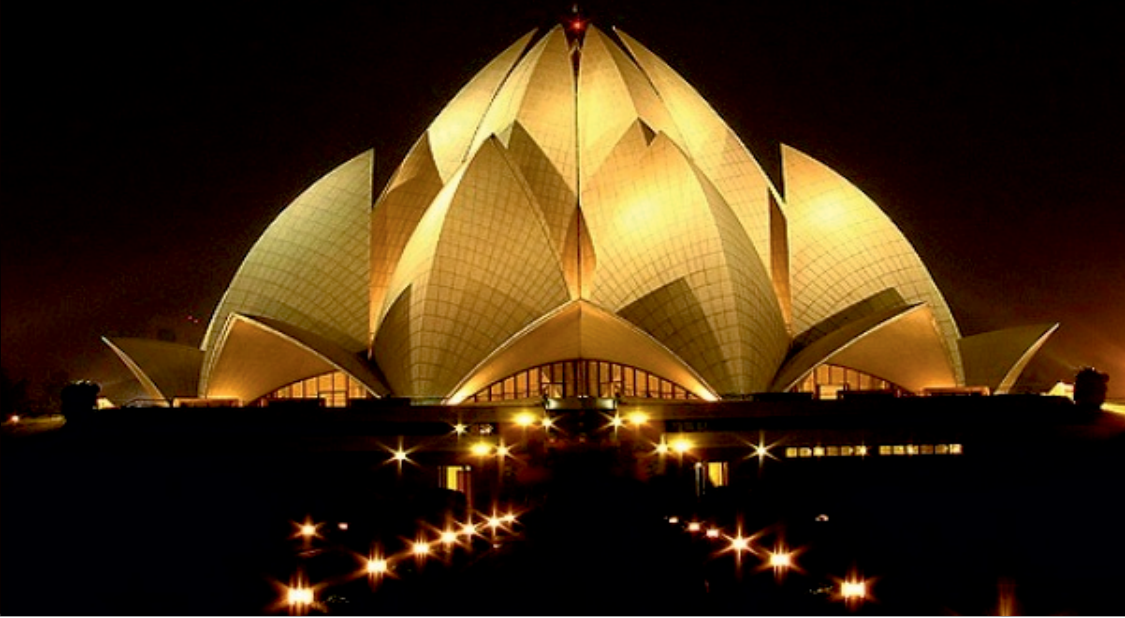
It's a scientifically proven fact that LED bulbs use 90% less electricity than other bulbs. An Led light bulb can last you up to 100,000 hours compared to 8,000 for compact fluorescent and 1,000 for an incandescent. That averages out to 12 hours of light per day for 12 years.

The best way to conserve energy is to use less of it. And LED bulbs are perfect fit in this regard. LED light bulbs are directional - that means they only put the light where you aim it or where you need it. Incandescent bulbs and most of the compact fluorescent bulb, on the other hand, just sit there and throw their glow all over the place - wasting electricity and generating much heat towards global warming.

SALIENT FEATURES & ADVANTAGES OF OLIVE LIGHTS

1. Saves energy of around 85 per cent
2. Pay back period is quite good
3. Reduction in maintenance – As the existing product has number of tube lights and ballasts which has a maximum of 6,000 hours' life but LED lights have a life of 50,000 hours (with L-70 factor) and our manufactured products are warranted for minimum 2 years
4. Almost zero investment on inventory
5. Less manpower required in maintenance as life span of LED lights is long
6. Expenses for repairing high-end lighting will reduce as cranes and other staff are not required frequently
7. We can manufacture LED lights with intelligent devices, that is, timer installations, dimming facilities, movement sensors, LDR, Dusk to Dawn with Solar (automatic On/Off)
8. Earn carbon credit (Green House Emission)
9. More power to light instead of power to heat
10. Consistent operation from 110V to 310V alongwith all ranges of DC 12/24/48/90/100V, SOME specific AV INPUT like 24VAC also available.
11. State-of-the-art stylish and ergonomic designs
12. No light pollution
13. Proven technology in a cost-effective package
14. Doesn't expose building occupants to mercury in event of breakage
15. Doesn't present hazardous waste disposal concerns
16. Inventory for LED maintenance is zero whereas for all other conventional lighting system: incandecent lamps, halogen, HPSV, Tube lights, T-5 CFL lights is very high





OLIVE'S ACHIEVEMENTS

We have around 10 patents into the domain of LED lighting for which we have got certification from Government of India and many other accrediting agencies of global stature. Presently, we have over 25 products on our profile, and lately we have filed application to get patent for a revolutionary LED light that has potential to save the power load up to 98% for some specific uses.

We are one of the biggest manufacturers in India for LED lighting product and one among the chosen few companies in India that have earned coveted Carbon Credit for our innovative and eco-friendly products.

As we follow a well thought-out quality management program - through which we systematically monitor and objectively evaluate the quality, efficiency and effectiveness of our products and services, we have been accorded ISO 9001:2008 certification.

Our products remain the best choice in industry for having unmatched electrical specification and delivering the highest performance. This has made us stand atop in the field of LED lighting products.

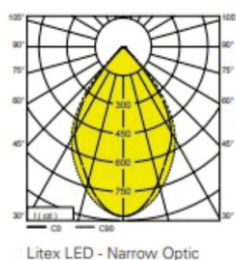
CERTIFICATION AND CREDENTIALS

- * AN ISO 9001:2008 CERTIFIED COMPANY
- * SSI, MSME, NSIC APPROVED COMPANY
- * FIRST AWARD FROM : ASSOCHAM "RISING MAKE IN INDIA STAR OF THE YEAR 2018 "
- * R&D, MANUFACTURING AND TESTING FACILITIES AT DELHI & HARYANA
- * PATENT CERTIFICATES FOR INNOVATED LED PRODUCTS
- * COMPANY HAVING INFRASTRUCTURE & FACILITIES AS PER BIS STANDARDS
- * DGS&D ENLISTMENT FOR ALL INDOOR & OUTDOOR LED PRODUCTS
- * MNRE APPROVED PRODUCTS MANUFACTURING COMPANY
- * BIS, CE & RoHS, and FCC APPROVED PRODUCTS
- * OEM FOR LARGE GROUPS IN INDIA
- * REGISTERED WITH BEE AS ESCO
- * EMPANELLED WITH EESL FOR SUPPLY OF INDOOR, OUTDOOR AND SOLAR LIGHTING SYSTEMS
- * MANUFACTURING AS PER RDSO STANDARDS & PRODUCTS INSPECTED BY RITES
- * APPROVED VENDOR FOR NATIONAL THERMAL POWER CORPORATION (NTPC)
- * APPROVED VENDOR FOR BHARAT PETROLEUM CORPORATION LIMITED (BPCL)
- * APPROVED SUPPLIER FOR MINISTRY OF DEFENCE AND INDIAN NAVY
- * REGISTERED VENDOR IN INDIAN RAILWAYS, DMRC AND CHHITTARANJAN LOCOMOTIVE WORKS
- * ENERGY SERVICE COMPANY REGISTERED BY CARE RATING.
- * CUSTOMISATION FACILITIES
- * CERTIFIED BY NSIC-ONICRA CREDIT RATING AGENCY OF INDIA LTD
- * LM-79 CERTIFIED PRODUCTS FROM NABL ACCREDITED LABORATORIES (ERDA, etc)
- * AWARDED BY ASSOCHAM - CERTIFICATE OF EXCELLENCE FOR OUTSTANDING PERFORMANCE YEAR 2015-16

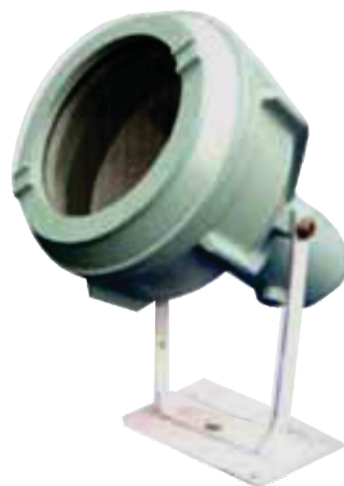
OLIVE L.E.D.[®]

The light you can trust

An ISO 9001:2008 Certified Company



Litex LED - Narrow Optic



Model Name LED FLP Flood Light

Housing Specification

Body Material	Aluminum Die Casting
Dimension	315mm Dia, 475mm ht.
Weight	10 Kg
Ingress Protection	IP-65
Commanding Height	12-25 ft.
Accessories	Stainless Steel
Paint	Powder Coating
Mounting	C Clamp/I bolt
Power Cord	0.75mm ² triple shield wire
Certificate	CE, RoHS, BIS, FCC, BEE, FLP

Technical Specifications

Voltage Range	90V-290V AC
Power Consumption	As per sheet below
PF	>0.95
THD	<10%
Phase type	Single phase
Internal wiring	Teflon
Input wire	3 Core (Red Phase, Black Neutral, Green Ground)
Frequency	50Hz-60Hz
Efficiency	>85%
Illuminance Design	LED + Reflector
Storage Temperature	-25°C ~ +65°C (Best 25°C)

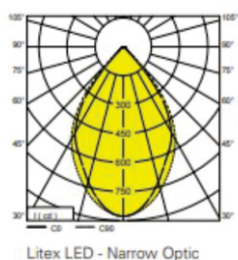
Lighting Specifications

Available wattages	100, 120, 150W
No. of LEDs	100, 120, 160
Lumens Output (Datasheet)	145 lumens/Watts
Color Temperature	5500~6500k
Beam Angle	120°
CRI	>80 Ra
Operating Temp.	-40°C to 60°C
Life Span	>50000H

OLIVE L.E.D.®

The light you can trust

An ISO 9001:2008 Certified Company



Model Name LED Flame Proof Light

Housing Specification

Body Material	Aluminum Die Casting
Dimension	268mm Dia, 320mm ht.
Weight	5.3 Kg
Ingress Protection	IP-65
Commanding Height	8-15 ft.
Accessories	Stainless Steel
Paint	Powder Coating
Mounting	C Clamp/I bolt
Power Cord	0.75mm ² triple shield wire
Certificate	CE, RoHS, BIS, FCC, BEE, FLP

Technical Specifications

Voltage Range	90V-290V AC
Power Consumption	As per sheet below
PF	>0.95
THD	<10%
Phase type	Single phase
Internal wiring	Teflon
Input wire	3 Core (Red Phase, Black Neutral, Green Ground)
Frequency	50Hz-60Hz
Efficiency	>85%
Illuminance Design	LED + Reflector
Storage Temperature	-25°C ~ +65°C (Best 25°C)

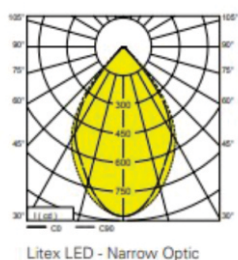
Lighting Specifications

Available wattages	40, 50, 60, 80 W
No. of LEDs	40, 64, 100
Lumens Output (Datasheet)	130 lumens/Watts
Color Temperature	5500~6500k
Beam Angle	120°
CRI	>80 Ra
Operating Temp.	-40°C to 60°C
Life Span	>50000H

OLIVE L.E.D.®

The light you can trust

An ISO 9001:2008 Certified Company



Litex LED - Narrow Optic

Model Name LED Well Light

Housing Specification

Body Material	Aluminum Die Casting
Weight	2 Kg
Ingress Protection	IP-65
Commanding Height	12-15 ft.
Accessories	Stainless Steel
Paint	Powder Coating
Mounting	C Clamp/I bolt
Power Cord	0.75mm ² triple shield wire
Certificate	CE, RoHS, BIS, FCC, BEE, FLP

Technical Specifications

Voltage Range	90V-290V AC
Power Consumption	As per sheet below
PF	>0.95
THD	<10%
Phase type	Single phase
Internal wiring	Teflon
Input wire	3 Core (Red Phase, Black Neutral, Green Ground)
Frequency	50Hz-60Hz
Efficiency	>85%
Illuminance Design	LED + Reflector
Storage Temperature	-25°C ~ +65°C (Best 25°C)

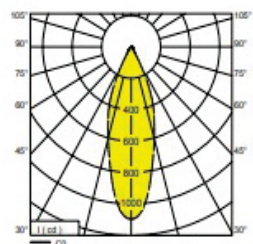
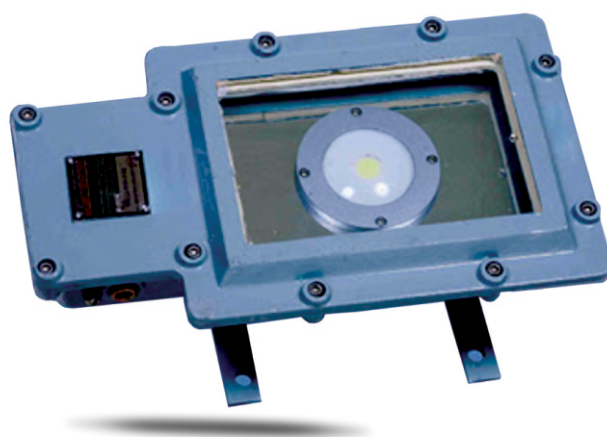
Lighting Specifications

Available wattages	25-60 W
No. of LEDs	20-60
Lumens Output (Datasheet)	145 lumens/Watts
Color Temperature	5500~6500k
Beam Angle	120°
CRI	>80 Ra
Operating Temp.	-40°C to 60°C
Life Span	>50000H

OLIVE L.E.D.®

The light you can trust

An ISO 9001:2008 Certified Company



Litex LED - Rack Optic

Model Name LED Bulk Head FLP

Housing Specification

Body Material	Aluminum Die Casting
Weight	7 kg
Ingress Protection	IP-65
Commanding HHeight	1-20 ft.
Accessories	Stainless Steel
Paint	Powder Coating
Mounting	C Clamp/I bolt
Power Cord	0.75mm ² triple shield wire
Certificate	CE, RoHS, BIS, FCC, BEE, FLP

Technical Specifications

Voltage Range	90V290V AC
Power Consumption	As per sheet below
PF	>0.95
THD	<10%
Phase type	Single phase
Internal wiring	Teflon
Input wire	3 Core (Red Phase, Black Neutral, Green Ground)
Frequency	50Hz-60Hz
Efficiency	>85%
Illuminance Design	LED + Lenses
Storage Temperature	-25°C ~ +65°C(Best 25°C)

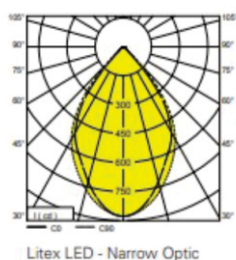
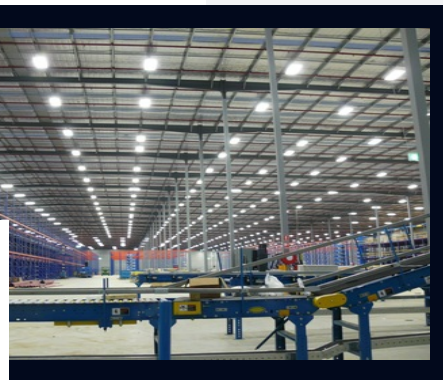
Lighting Specifications

Available wattages	50-150 W
No. of LEDs	50-150
Lumens Output (Datasheet)	145 lumens/Watts
Color Temperature	5500~6500k(optional)
Beam Angle	120°
CRI	>80 Ra
Operating Temp.	-40°C to 60°C
Life Span	>50000H

OLIVE L.E.D.®

The light you can trust

An ISO 9001:2008 Certified Company



Litex LED - Narrow Optic



Model : Well Glass Spider

Housing Specification

Body Material	Aluminum Die Casting
Weight	2.5 Kg
Ingress Protection	IP-65
Commanding Height	12-15 ft.
Accessories	Stainless Steel
Paint	Powder Coating
Mounting	C Clamp/I bolt
Power Cord	0.75mm ² triple shield wire
Certificate	CE, RoHS, BIS, FCC, BEE, FLP

Technical Specifications

Voltage Range	90V-290V AC
Power Consumption	As per sheet below
PF	>0.95
THD	<10%
Phase type	Single phase
Internal wiring	Teflon
Input wire	3 Core (Red Phase, Black Neutral, Green Ground)
Frequency	50Hz-60Hz
Efficiency	>85%
Illuminance Design	LED + Reflector
Storage Temperature	-25°C ~ +65°C (Best 25°C)

Lighting Specifications

Available wattages	30-100 W
No. of LEDs	30-100
Lumens Output (Datasheet)	145 lumens/Watts
Color Temperature	5500~6500k
Beam Angle	120°
CRI	>80 Ra
Operating Temp.	-40°C to 60°C
Life Span	>50000H



Some of Our Esteemed Clients



and many more....

OLIVE EXPORTS PVT. LTD.

Address : Shed No. 11, DSII DC, Wazirpur Industrial Area,
Near Railway Underpass New Delhi-110052, INDIA

Email : oliveledlights@gmail.com, support@oliveled.in

Phone : +91-11-49502021, +91-9312400900, +91-9311855999

