



MARUTI INTERNATIONAL



ENVIRONMENT FRIENDLY

ENERGY SAVING

LONG LASTING

ZERO MAINTENANCE

Regd. Office & Works : Plot No. 60, Road No. 9, GIDC Savli, Manjusar, Vadodara-391 775.

Tel. +91 2667 264752, M. +91 9376196169 E-mail : sales@marutiinternational.net Web. : www.marutiinternational.net



MARUTI INTERNATIONAL

Maruti LED - Lamp

The Maruti Product Line Was Developed And Desinged As a Modular System. Besides The Innovative And Eco-Friendly LED-Technology The Main Focus Was To Create A Cost-Effective System. So We Designed a System That We Can Use in every situation.

LONG LIFE AND COST SAVING WITH GREEN ENERGY!

- LED Light Sources Are Directional Light Sources.
- LEDS Offers Up To 100 Lumen/W compared To HPS With 140 Lumen/W.
- The Lifetime For LEDS with Only Low Operating Voltage Is 3-4 Times Higher Than HPS Lighting.
- HID (High Intensity Discharge) Lighting Creates EMI Problems.
- LED Is A Cold Light Source (With None UV And FIR) And Does Not Pollute The Environment.

ADVANTAGES OF THE LAYOUT

- High Power - InGaN - LED Technology (Cold White, Neutral White, Warm White)
- Aluminum Housing IP 65
- Tough Against Vibrations And Oscillation

ADVANTAGES OF THE POWER SUPPLY

- Wide Input Voltage: 150V – 300V AC
- Short Circuit Proof, Overvoltage Protection,
- Power Line Voltage Fluctuations do Not Interrupt Operation
- PFC > 0,90 @ 230 V/AC
- PFC > 0,90 @ 110 V/AC

LED – Technology

Eco – Friendly And Effective

LED LIGHTING SYSTEM SAVES ELECTRICAL POWER!

- 80% Compared To Incandescent Bulb,
- 50% Compared To Compact Fluorescent Lamp,
- 60% Compared To Fluorescent Lamp,
- 75% Compared To Halogen Lamp,
- 80% Compared To Mercury – Vapor Lamp, And
- 65% Compared To High Pressure Sodium Lamp.
- All HID Lamps Have A Light – Derating After 2.000 Operation Hours
- LED (InGaN) Does Not Have Any Derating Up To 50.000 Hours.

GO LED, GO GREEN

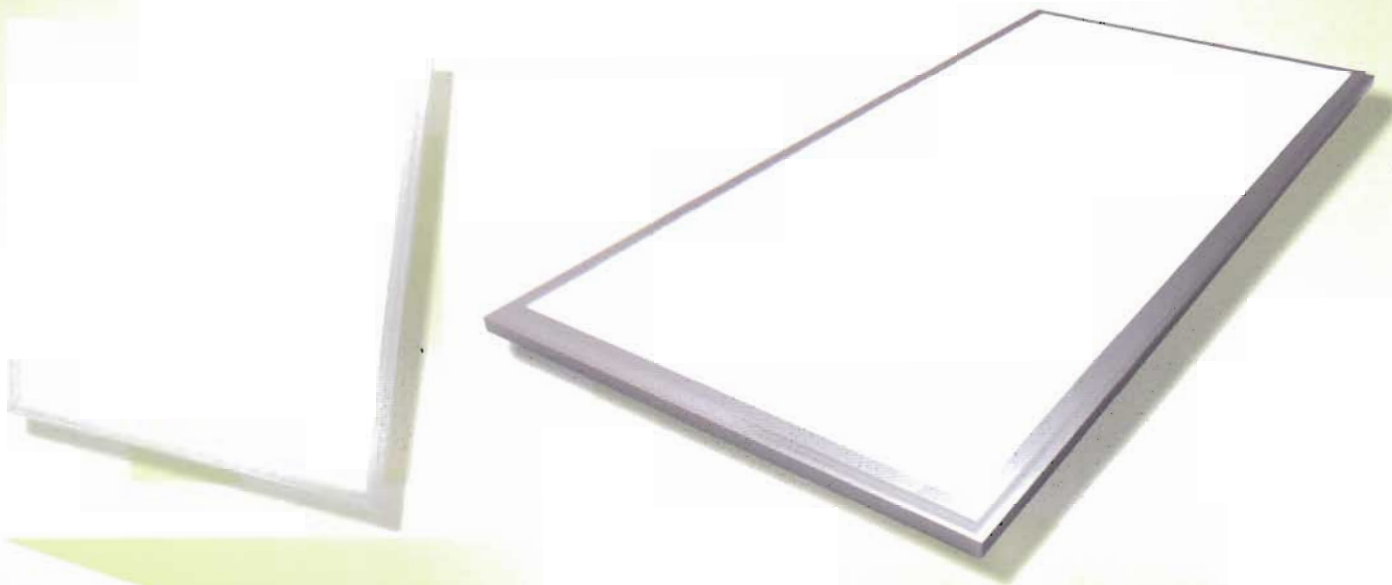
INDOOR INDUSTRIAL LIGHTING



LED Light Specification	LED TUBE LIGHT			LED HIGHBAY LIGHT	
	MI-TL-15	MI-RTL-18	MI-TL-30	MI-HB-70	MI-HB-140
● Wattage	14 W	18 W	28 W	70 W	130 W
● LED Make	OSRAM Gmbh				
● Input Voltage	150 - 300 V				
● Operating Frequency	50Hz + 3% - 5%				
● Power Factor	> 0.90				
● Efficiency	> 85%				
● LED Luminous Efficiency	> = 110 lm/w				
● Color	Cool White ; Natural White ; Warm White				
● Color Temperature	2700 - 6500 K				
● Lumens	1330	2660	8050	14950	
● Beam Angle (Led)	Diffuse with antiglare			30 to 150 As per application	
● Working Life	50,000 Hrs				
● Warranty	2 Years				

GO LED, GO GREEN

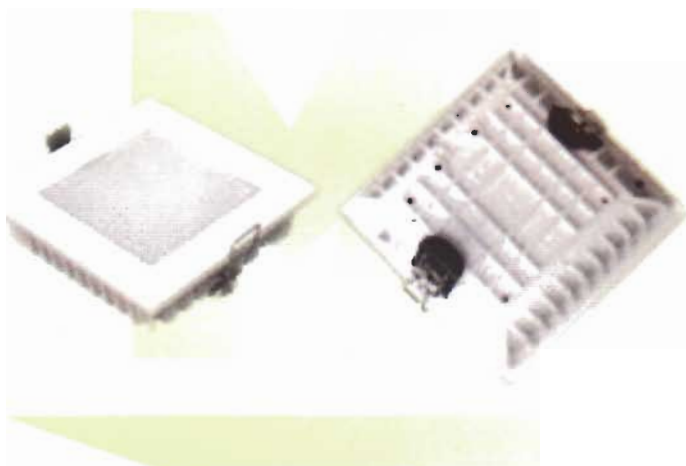
INDOOR LIGHTING



Panel Light Specification	MI-PL-20	MI-PL-48	MI-PL-38/48	MI-PL-24/30
● Panel Size	1 x1	1x4	2x2	2x1
● Wattage	20 W	48 W	38/48 W	24/30 W
● Input Voltage	150 - 300 V			
● Operating Frequency	50Hz + 3% - 5%			
● Power Factor	> 0.90			
● Efficiency	> 85%			
● LED Luminous Efficiency	> = 110 lm/w			
● Color	Cool White ; Natural White ; Warm White			
● Color Temperature	2700 - 6500 K			
● Lumens	1900	4460	3610/4460	2280/2850
● Beam Angle (Led)	Diffuse with antiglare			
● Working Life	50,000 Hrs			
● Warranty	2 Years			

GO LED, GO GREEN

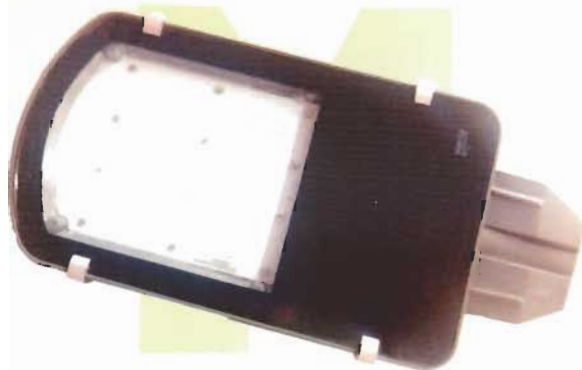
INDOOR LIGHTING



Down Light Specification	Square Down Light			Round Down Light		
	MI-DLS-9	MI-DLS-15	MI-DLS-21	MI-DLR-9	MI-DLR-12	MI-DLR-18
● Wattage	9 W	15 W	22 W	9 W	12 W	18 W
● LED Make	OSRAM GmbH			OSRAM GmbH		
● Input Voltage	150 - 300 V			150 - 300 V		
● Operating Frequency	50Hz + 3% - 5%			50Hz + 3% - 5%		
● Power Factor	> 0.90			> 0.90		
● Efficiency	> 85%			> 85%		
● LED Luminous Efficiency	≥ 95 lm/w			≥ 95 lm/w		
● Color	Cool White ; Natural White ; Warm White			Cool White ; Natural White ; Warm White		
● Color Temperature	2700 - 6500 K			2700 - 6500 K		
● Lumens	855	1425	2090	855	1140	1710
● Beam Angle (Led)	120			120°		
● Working Life	50,000 Hrs			50,000 Hrs		
● Warranty	2 years			2 years		

GO LED, GO GREEN

OUTDOOR LIGHTING



Street Light Specification	MI-SL-18 Eco	MI-SL-22	MI-SL-45	MI-SL-60	MI-SL-90
● Wattage	18 W	22 W	45 W	60 W	90 W
● LED Make	OSRAM Gmbh				
● Input Voltage	150 - 300 V				
● Operating Frequency	50Hz + 3% - 5%				
● Power Factor	> 0.90				
● Efficiency	> 85%				
● LED Luminous Efficiency	> = 110 lm/w				
● Color	Cool White ; Natural White ; Warm White				
● Color Temperature	2700 - 6500 K				
● Lumens	1980	2420	4950	6600	9900
● Beam Angle (Led)	30° to 150° As per application				
● Working Life	50,000 Hrs				
● Warranty	2 Years				

GO LED, GO GREEN

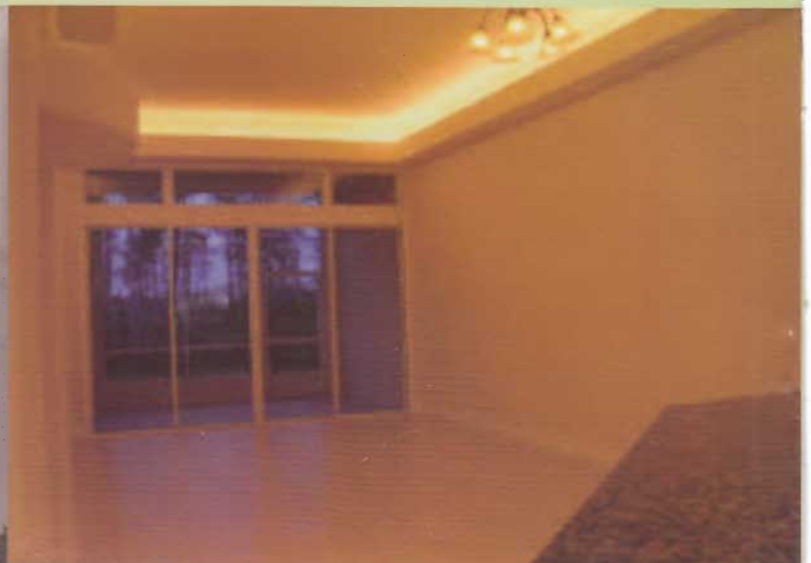
OUTDOOR LIGHTING



Flood Light Specification	MI-FL-15	MI-FL-30	MI-FL-50	MI-FL-100	MI-FL-150
● Wattage	15 W	30 W	50 W	100 W	150 W
● LED Make	OSRAM Gmbh				
● Input Voltage	150 - 300 V				
● Operating Frequency	50Hz + 3% - 5%				
● Power Factor	> 0.90				
● Efficiency	> 85%				
● LED Luminous Efficiency	> = 110 lm/w				
● Color	Cool White ; Natural White ; Warm White				
● Color Temperature	2700 - 6500 K				
● Lumens	1650	3300	5500	11000	16500
● Beam Angle (Led)	30 to 150 As per application				
● Working Life	50,000 Hrs				
● Warranty	2 Year				

GO LED, GO GREEN

INDIRECT LIGHTING



BSCIC Certifications Pvt. Ltd.

Certificate Of Registration

QUALITY MANAGEMENT SYSTEM

This is to certify that:

MARUTI INTERNATIONAL
 PLOT NO. 60, ROAD NO. 9, GIDC, MANJUSAR
 TAL: SAVLI, DIST. BARODA, GUJARAT, INDIA

Hereby granted the Certificate Number : **BN3615/3615:0411**

Subsequent to the Re-Assessment conducted on 02-Apr-2014 and the organization has been found to be operating a Quality Management System which complies with the requirements of

ISO 9001:2008
 for the following scope :

Manufacture and Supply of CFL Machine Light, Water Resistance CNC Machine Light, Machine Arm Lamp, Guide Way Wipers, LED Machine Lamp & LED Lights

Originally Registered: 19-Apr-2011 Latest Issue: 08-Apr-2014 Expiry Date: 18-Apr-2017

For BSCIC CERTIFICATIONS PVT.LTD.

[Signature]

Sanjay Seth
 Managing Director

This Certificate is valid for 3 Years subject to
 *First Re-Validation Date: 12-Mar-2015 for Surveillance 1.
 *Second Re-Validation Date: 12-Mar-2016 for Surveillance 2.
 Re-assessment Due Date: 11-Feb-2017
 (In case if Surveillance Audit is not allowed to be conducted;
 this Certificate shall be Suspended/Withdrawal).

Please re-validate this certificate's status at
<http://bscic.com/admincontrol/certificatestatus.php> or www.bsc-icc.com
 or REGISTRATION STATUS.
 This Certificate of registration is granted subject to relevant provisions
 of the BSCIC
 Certifications Pvt. Ltd. Contract Terms & Scheme for registration
 form 2 018 (Latest version). Please see 2 018 at our website www.bsc-icc.com
 The certificate of registration remains the property of BSCIC Certifications
 Pvt. Ltd. and shall be returned immediately upon request.
 BSCIC Headquarters: 2nd Floor, 562 150, Sector - 21 C, Paridabad 391001
 Baroda, India.



Page 1 of 1



**LED Strips are available in
 white, warm white & RGB colours.**



Powered by OSRAM

Regd. Office & Works : Plot No. 60, Road No. 9, GIDC Savli, Manjuser, Vadodara-391 775, Gujarat, India.

Tel. +91 2667 264752, M. +91 9376196169 E-mail : sales@marutiinternational.net Web. : www.marutiinternational.net