

# HILLSON 2020 FOOTWEAR PVT. LTD. CATALOGUE



DURABILITY

AFFORDABILITY

VALUE FOR  
MONEY

# OUR MOST IMPORTANT RESOURCES



## WHAT MAKES US DIFFERENT?

- Largest safety shoe manufacturer in India producing more than 30 Lakh pairs per annum (12,000 pairs a day)
- Widest range of safety footwear catering to a broad spectrum of specific industrial applications
- Products tested and certified from laboratories like CLRI, CLI, FDDI, INTERTEK
- Customizable shoes to meet individual user requirements
- In-house Research & Development to support the design and product innovation
- Above all, an overriding commitment to quality and customer service!



# WHILE DEVELOPING A PRODUCT WE MAKE SURE ABOUT



## DURABILITY

Each and every pair of footwear manufactured in our factory has to be durable



## AFFORDABILITY

We are a developing and growing Economy. Cost of Our footwear should be easy on pockets of the buyer



## VALUE FOR MONEY

Customer pays for buying our footwear from his hard earned money. It is our duty to give him back that equal amount by giving a footwear worth that much. Anything less is not acceptable



# OUR STRENGTH



Wide choices  
of products &  
our channel  
network



600+  
people in  
our team



Production  
area of approx.  
1,20,000 Sq. feet.

## OUR ACCREDITATION

IS : 12254  
  
CM/L-9811890

IS : 15298 : PART 2  
  
CM/L-9954209



# SAFEGUARDING INDIA'S WORKFORCE



## CROSS SECTION VIEW OF SAFETY SHOE

- 1 UPPER:** Real Leather Durable & Breathable
- 2 VAMP LINING:** Non-Woven Fabric Sweat Absorbing Breathable & Odor-free
- 3 TONGUE CUSHION:** High-density foam
- 4 QUARTER LINING:** Drylex/ Cambrelle Fabric Sweat Absorbing Breathable & Odor Free
- 5 COLLAR:** PU Foam with 3 year anti-peel properties
- 6 COUNTER STIFFENER:** Thermoplastic with the suitable hardness of heel support
- 7 TOE CAP:** Impact resistant, Tested for Energy level of 200 J
- 8 SOLE:** Anti Skid Design Oil & Acid Resistant, PU molded Single/ Double Density, Anti Static sole
- 9 TOE CAP PADDING:** Cushioned for extra comfort
- 10 STEEL MIDSOLE:** For penetration resistant (Optional)
- 11 INSOCKS:** Ortho Bounce absorbing/ Soft EVA for rebound comfort



## CROSS SECTION VIEW OF GUMBOOT

1 100% PVC

2 FABRIC LINING

3 STEEL TOE CAP

4 OUTSOLE: Oil & Chemical resistant

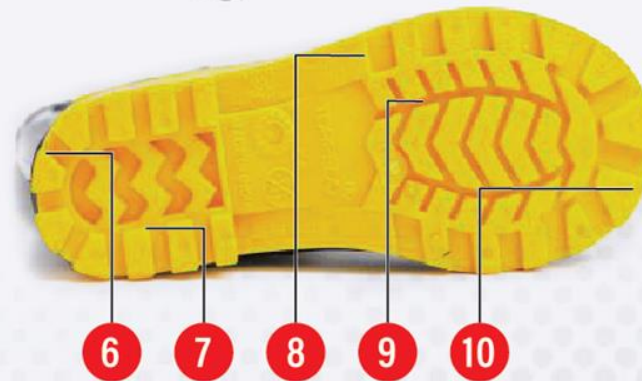
5 STEEL PLATE (Optional)

6 HEEL: Beveled heel offer more surface & slip resistance

7 BAND VIBRATION ABSORBER HEEL

8 LADDER TREADS: For better grip ladder rails

9 CLEATS: Open on outside for better liquid dispersion/  
Channel tread pattern to release debris



# INSOCKS



The insocks is the immediate padding on which the feet rests while wearing. It is very crucial to have a good comfortable insocks because it directly effects the workmen efficiency.

Various kinds of Insocks used in Hillson are:

- ▶ **Ortho Bounce Insock:** It is an open cell PU Insock which has very high resilience and amazing energy rebound. Its high compression set makes it very durable and enhances the capability to absorb the energy impact on the knees.
- ▶ **Memory comfort Insocks:** It is PU Insock that distributes forms contours according to the shape of the feet that helps in nice distribution of body weight across the feet. The foam gives a permanent sense of comfort upon stepping and reduces the fatigue considerably.
- ▶ **Soft EVA Insocks:** The soft EVA improves the compression set of the Insock in comparison to widely used traditional in socks. It is used to substitute the above wherever required.



# DIFFERENT KINDS OF SOLES FOR SAFETY SHOES



1. PU Dual Density: A PU dual density sole means that the sole is made of 2 layers, the midsole which is soft and the outsole which is hard. The advantages of dual density are
  - ▶ Better flexibility and performance of the footwear with 2 layer support
  - ▶ Soft midsole adds on to the comfort while hard outsole enhances the anti-penetration properties, abrasion.
2. PU Mono Density: PU Mono density means that the sole is molded in 1 layer only. The shoes is comparatively lighter in weight than dual density.
3. PVC Dual Density: PVC dual density means that the sole is made in 2 layers of PVC. The midsole which is soft and the outsole which is hard. The advantages of dual density are similar to PU, the only difference is the weight is comparatively more than PU
4. PVC Mono Density: PVC Mono density means that the sole is molded in 1 injection only.

## TYPES OF TOE CAPS



1. **Steel Toe Caps:** A steel toe cap is made of Mild steel coated with special powder that saves it from rusting. Appropriate standard for steel toe cap is EN-12568:2004 and it should be marked on the toe cap. All ISI Marked products are fitted with steel toe caps are in strict compliance to above.
2. **Composite Toe Caps:** A composite toe cap is made of polymeric material and is much lighter in weight than steel toe cap whereas maintains the same features.

# SYMBOL KEY



STEEL TOE



GRAIN LEATHER



EYELETS



POLYESTER FIBRES



ALKALIS OILS



ANTI-SLIP



BUTTONS



ANTI-ABRASION



SOFT & FLEXIBLE  
PVC UPPER



LINING



COLLAR SHOE



LACES



ORTHO BOUNCE  
INSOCKS



LADIES SHOE



MEMORY COMFORT  
INSOCKS



# INDUSTRIES WE SERVE



ORDNANCE  
FACTORIES



TRANSPORT  
INDUSTRY



AVIATION  
INDUSTRY



AUTOMOTIVE  
INDUSTRY



SECURITY  
INDUSTRY



AUTOMOBILE  
INDUSTRY



SHIPYARD  
INDUSTRY



IRON/ PIPE  
INDUSTRY



METAL  
INDUSTRY



CONSTRUCTION  
INDUSTRY



GLASS  
INDUSTRY



MOBILE  
INDUSTRY



STEEL PLANT  
INDUSTRY



GAS & CHEMICAL  
INDUSTRY



MINE  
INDUSTRY



PLANT  
INDUSTRY



FOOD  
INDUSTRY



MEAT  
INDUSTRY



SALT  
INDUSTRY



RAILWAY  
INDUSTRY

**PU SOLE  
SAFETY SHOES  
IN SINGLE/  
DUAL DENSITY**



# MIRAGE

- SIZE: 6 to 11 or 40 to 45
- WEIGHT: Size 8 - 1160 Grams



Imported lining with anti microbial treatment

EN 200J  
Steel Toe Cap



Grain leather upper,  
1.8mm - 2mm Thickness



Rust free Brass hooks



PU lining with 2 years  
hydrolysis test pass



Fully Moulded Dual  
Density (PU) outsole



# NUCLEUS

- SIZE: 5 to 11 or 39 to 45
- WEIGHT: Size 8 - 1220 Grams



EN 12568 marked  
200J Steel Toe Cap



Genuine Grain leather upper,  
1.8mm - 2mm Thickness



Anti Rust Brass eyelets



Woven padded fabric



Fully moulded dual  
density (PU) outsole



# SAMURAI

- SIZE: 5 to 11 or 39 to 45
- WEIGHT: Size 8 - 1122 Grams



EN 12568 marked  
200J Steel Toe Cap



Grain leather upper in  
Apollo print



Anti rust Brass eyelets



Air mesh lining



Fully moulded dual  
density (PU) outsole





# ARGO

- SIZE: 5 to 11 or 39 to 45
- WEIGHT: Size 8 - 1008 Grams



EN 12568 marked  
200J Steel Toe Cap



Grain leather apollo print upper  
Thickness is 1.8mm-2.0mm



Rust free eyelets made  
of Brass metal



PU lining with 2 years  
hydrolysis test pass



Fully moulded  
monodensity PU outsole



# PANTHER

- SIZE: 5 to 11 or 39 to 45
- WEIGHT: Size 8 - 1080 Grams



200J Steel Toe Cap



Grain leather in Barton print  
1.8mm - 2mm thickness



Rust free eyelets made  
of Brass metal



Imported lining with  
anti microbial treatment



Fully moulded dual  
density (PU) outsole



# SOCCER

- SIZE: 5 to 11 or 39 to 45
- WEIGHT: Size 8 - 1080 Grams



Imported lining with anti microbial treatment

EN 12568 marked 200J Steel Toe Cap



Grain leather in Barton print 1.8mm - 2mm thickness



Anti rust D eyelets



PU lining with 2 years hydrolysis test pass



Fully moulded dual density (PU) outsole



# APACHE

- SIZE: 5 to 11 or 39 to 45
- WEIGHT: Size 8 - 1080 Grams



Air mesh lining

EN 12568 marked  
200J Steel Toe Cap



Grain leather upper in apollo print,  
Thickness is 1.8mm-2.0mm



D-Ring rust free  
eyelets are used



PU lining with 3 years  
anti peel test pass



Fully moulded  
monodensity PU outsole



# JAGUAR

- SIZE: 5 to 11 or 39 to 45
- WEIGHT: Size 8 - 980 Grams



EN 12568 marked  
200J Steel Toe Cap



Grain leather upper in Barton print  
Thickness is 1.8mm-2.0mm



Rust free eyelets made  
of Brass metal



Imported lining with  
antimicrobial treatment



Fully moulded  
monodensity PU outsole



# JACKPOT

- SIZE: 5 to 11 or 39 to 45
- WEIGHT: Size 8 - 980 Grams



EN 12568 marked  
200J Steel Toe Cap



Grain leather upper in Barton print  
Thickness is 1.8mm-2.0mm



Rust free eyelets made  
of Brass metal



Real leather collar



Fully moulded  
monodensity PU outsole



# BASE

- SIZE: 5 to 11 or 39 to 45
- WEIGHT: Size 8 - 970 Grams



EN 12568 marked  
200J Steel Toe Cap



Grain leather upper  
Thickness is 1.8mm-2.0mm



Rust free eyelets made  
of Brass metal



Airmesh lining



Fully moulded  
monodensity PU outsole



# MFO1

- SIZE: 5 to 11 or 39 to 45
- WEIGHT: Size 8 - 1080 Grams



EN 12568 Marked  
200J Composite Toe Cap



Grail leather upper in Appolo  
Print Thickness 1.8 mm- 2.00 mm



Fused Plastic Eyelets



PU lining with  
3cr Anti-peel test pass



Fully Molded Mono  
density PU sole





# LF-02



- SIZE: 3 to 8 or 37 to 42
- WEIGHT: Size 8 - 885 Grams



200J Steel Toe Cap



Grain leather upper in C.G print Thickness is 1.8mm-2.0mm



Imported lining with antimicrobial treatment



Fully moulded monodensity PU outsole



**PVC SOLE  
SHOES IN  
SINGLE/  
DUAL  
DENSITY**





# WORKOUT

- SIZE: 5 to 11 or 39 to 45
- WEIGHT: Size 8 - 1300 Grams



Extra wide metal toe  
non EN standard



Synthetic leather upper  
Thickness is 1.4mm-1.6 mm



Anti rust  
D-Type eyelets



PU lining with 2 years  
hydrolysis test pass



Fully moulded dual  
density virgin PVC sole



# SPORTY

- SIZE: 5 to 11 or 39 to 45
- WEIGHT: Size 8 - 1230 Grams



Extra wide metal toe  
non EN standard



Synthetic leather upper  
Thickness is 1.4mm-1.6 mm



Anti rust brass  
eyelets



Woven padded air  
mesh fabric



Fully moulded dual  
density virgin PVC sole



# ROCKLAND

- SIZE: 5 to 11 or 39 to 45
- WEIGHT: Size 8 - 1020 Grams
- EXTRA LIGHT SHOE



Extra wide metal toe  
non EN standard



Real leather  
upper in Barton print



Anti rust  
D-type eyelets



PU lining with 2 years  
hydrolysis test pass



Fully moulded  
monodensity PU outsole



\*WARRANTY: Minimum 6 months against upper to sole bonding & sole cracking only.

# BESTON

- SIZE: 5 to 11 or 39 to 45
- WEIGHT: Size 8 - 1040 Grams



Extra wide metal toe  
non EN standard



Synthetic leather upper  
1.4mm - 1.6mm thickness



Anti rust  
D-type eyelets



PU lining with 2 years  
hydrolysis test pass



PVC outsole



# U-4

- SIZE: 5 to 11 or 39 to 45
- WEIGHT: Size 8 - 980 Grams



Extra wide metal toe non EN standard cap



Synthetic leather upper 1.4mm - 1.6mm thickness



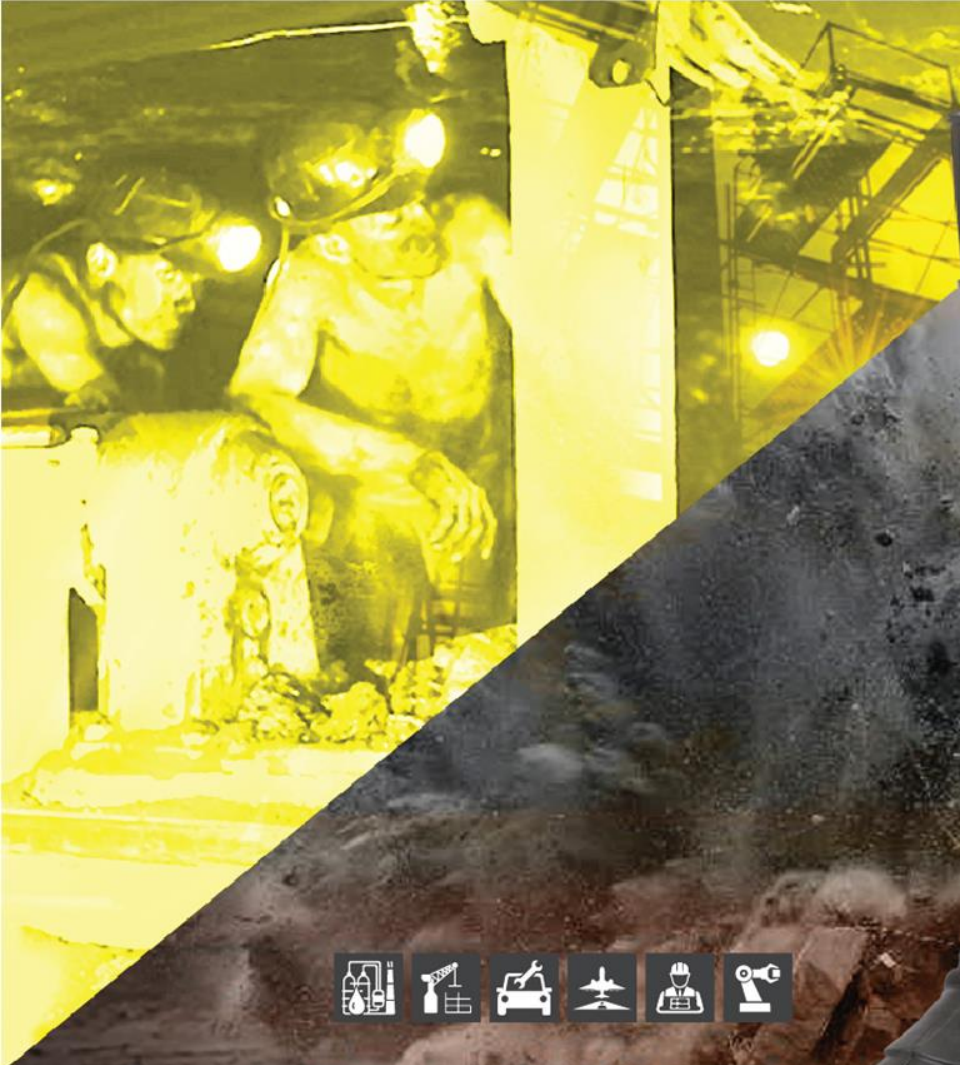
Coated aluminum eyelets



Fully moulded PVC sole monodensity



# PVC SAFETY GUMBOOT RANGE



ENGINEERING, PETROCHEMICAL, MANUFACTURING,  
ALUMINUM, COPPER, METAL, AUTO AND AUTOMOTIVE INDUSTRY ETC.





# TORPEDO 212

- SIZE: 5 to 11 or 39 to 45
- HEIGHT: 15"

Soft PVC upper for comfortable walk



140 J Steel



: ENGINEERING, PETROCHEMICAL, MANUFACTURING, ALUMINUM, COPPER, METAL, AUTO & AUTOMOTIVE INDUSTRY ETC.

Fully molded PVC sole





- SIZE: 5 to 11 or 39 to 45
- HEIGHT: 15"

Soft PVC upper



Extra wide  
Steel Toe Cap



Fully molded hard  
PVC Sole





# NO RISK

- SIZE: 5 to 11 or 39 to 45
- HEIGHT: High Ankle

100% cotton lining



Soft & Flexible PVC



Anti-rust Japanese buttons



Extra wide Steel Toe Cap



Fully molded hard PVC Sole



\*Ideal for less submerged workplaces where boot of big height is not required but safety toe cap is mandatory like construction sites & chemical industries etc.

# COLLAR BOOT

- SIZE: 5 to 11 or 39 to 45
- HEIGHT: High Ankle

Synthetic leather collar with high abrasive properties



Soft PVC upper for extra comfort



Extra wide Steel Toe Cap



Fully molded hard PVC Sole



\*Economical & durable option for non ISI marked category of steel toe fitted safety boot

# DISCOVERY

- SIZE: 6 to 10 or 40 to 44
- WEIGHT: Size 8 - 1320 Grams



Extra wide  
steel toe cap



Soft PVC Upper



Moulded eyelet



Covered with fabric  
binding, prevents bruise  
from PVC edges



Sole hard PVC



\*Washable safety shoes ideal for construction site especially in rainy season

**PVC**  
**RAINWEAR**  
**GUMBOOTS**  
**RANGE**



# SHERPA

- SIZE: 5 to 10 or 39 to 44
- HEIGHT: 13"

Extra soft & flexible  
PVC Upper



Soft flexible  
100% PVC Outsole



# CENTURY

- SIZE: 6 to 11 or 40 to 45
- HEIGHT: 15"
- BLACK/ YELLOW

Soft & flexible PVC upper



Synthetic fiber lining



Hard PVC outsole



\*Height and weight pro rata combination makes it ideal for feather like walking



# WELSAFE

- SIZE: 6 to 10 or 40 to 44
- HEIGHT: 12.5"
- RED/ BLACK

Soft & flexible PVC upper



Synthetic fiber lining



Hard PVC outsole



\*Thick layer at metatarsal area for additional safety, bold and sturdy designs.

# WELCOME

- SIZE: 5 to 10 or 39 to 44
- HEIGHT: 12.5"
- BLACK/ YELLOW

Soft & flexible PVC upper



Synthetic



Hard PVC outsole



# CHOTA HATHI

- SIZE: 7 to 10 or 41 to 44
- HEIGHT: 11"

Soft & flexible PVC upper



Hard PVC outsole





# DON

- SIZE: 5 to 10 or 39 to 44
- HEIGHT: 9.5"
- BLACK/ RED

Soft & flexible PVC upper



Fabric lining



Hard PVC outsole



\*Extra softness extraordinary sole Grip makes it an ideal rainwear for hilly regions

# 7 STAR

- SIZE: 5 to 10 or 39 to 44
- HEIGHT: High Ankle

Anti-rust  
Japanese buttons



Soft & flexible PVC upper



100% cotton lining



Fully molded hard  
PVC Sole



\*A Lightweight and practical rainwear for those who don't w





# PVC GUMBOOT RANGE FOR FOOD INDUSTRY



# WELCOME WHITE

- SIZE: 6 to 10 or 40 to 44
- HEIGHT: 12.5"

100% virgin soft  
PVC upper



Fabric lining (Optional)



100% virgin hard  
PVC sole



\*White color reflects contamination easily as compared to black color, hence it is ideal for the food industry. These boots are suitable for both male & female.

# 101 WHITE

- SIZE: 3 to 10 or 39 to 45
- HEIGHT: 12.5"

100% virgin soft  
PVC upper



Fabric lining (Optional)



100% virgin hard  
PVC sole



\*White color reflects contamination easily as compared to black color, hence it is ideal for the food industry. These boots are suitable for both male & female.



# CENTURY WHITE

- SIZE: 6 to 11 or 40 to 45
- HEIGHT: 15"

100% virgin soft  
PVC upper



Fabric lining (Optional)



100% virgin hard  
PVC sole



\*Extra softness extraordinary sole Grip makes it an ideal rainwear for hilly regions. White color reflects contamination easily as compared to black color, hence it is ideal for the food industry. These boots are suitable for both male & female.

# DON WHITE

- SIZE: 6 to 10 or 40 to 44
- HEIGHT: 09"

100% virgin soft  
PVC upper



100% virgin hard  
PVC sole





- SIZE: 6 to 10 or 40 to 44
- HEIGHT: 09"

100% virgin soft  
PVC upper



100% virgin soft  
PVC sole



\*These boots are ideal for sea food industry & its primarily used by women.



# 101 BLUE

▪ SIZE: 3 to 10 or 39 to 45  
HEIGHT: 12.5"

100% virgin soft  
PVC upper



Fabric lining (Optional)



100% virgin hard  
PVC sole



**SWAG**  
HILLSON



**STYLE**



**BHI**



**SAFETY**

**BHI**



SINCE  
1980

# 1901

- SIZE: 6 to 10 or 40 to 44
- WEIGHT: Size 8 - 1100 Grams



Steel Toe Cap



Robust Synthetic  
Leather Upper



Reflective Tapes for  
Night Visibility



Dual-density TFP sole



# 1902

- SIZE: 6 to 10 or 40 to 44
- WEIGHT: Size 8 - 1100 Grams



Air Mesh Lining

Steel Toe Cap



Robust Synthetic  
Leather Upper



Reflective Tapes for  
Night Visibility



Dual-density TFP sole



# 1903

- SIZE: 6 to 10 or 40 to 44
- WEIGHT: Size 8 - 1100 Grams



Air Mesh Lining

Steel Toe Cap



Robust Synthetic  
Leather Upper



Air Vents



Anti rust  
D-type eyelets



Dual-density TFP sole





# 1904

- SIZE: 6 to 10 or 40 to 44
- WEIGHT: Size 8 - 1100 Grams



Air Mesh Lining

Steel Toe Cap



Robust Synthetic  
Leather Upper



Air vents



Anti rust  
D-type eyelets



Dual-density TFP sole





**HILLSON FOOTWEAR PVT. LTD.**

Plot No. 420-421, M.I.E. Part-I, Bahadurgarh-124507, Haryana, India  
+91-702 779 1095 | sales@hillsonshoes.com | www.hillsonshoes.com