

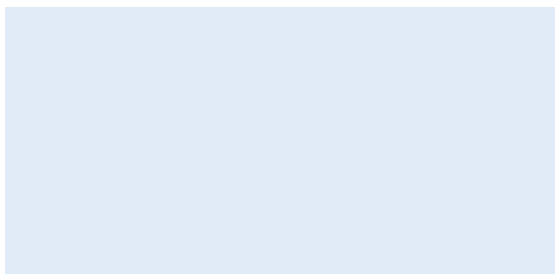
Aquacel™

Extra

Aquacel™ Ag+

Extra

User guide*



POWERED BY

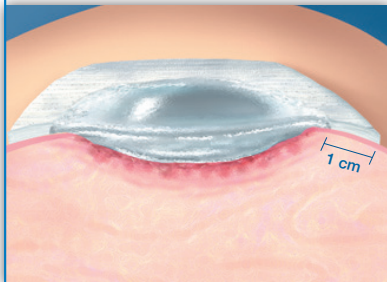


*please see Instructions for Use

Dressing application guide

Before applying the dressing, cleanse the wound area with an appropriate wound cleanser.

Shallow Wound



AQUACEL® Extra™ wound dressing should overlap at least 1 cm onto the skin surrounding the wound.

Cavity Wound



When using AQUACEL® ribbon dressing in deep cavity wounds, leave at least 2.5 cm outside the wound for easy retrieval. Only pack deep wounds up to 80%, as AQUACEL® ribbon dressing will expand to fill the wound spaces on contact with wound fluid.

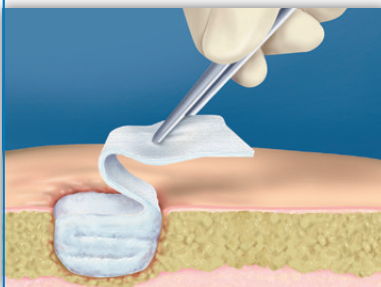
Cover Dressing



Apply the dressing to the wound and cover with an appropriate secondary dressing. (eg, AQUACEL® Foam dressing, DuoDERM® Extra Thin dressing, DuoDERM® Signal™ dressing).

See individual pack inserts for instructions.

Removal



Remove the AQUACEL® Extra™ and AQUACEL® ribbon dressings when clinically indicated (ie, leakage, excessive bleeding, or suspicion of infection).

AQUACEL® ribbon and AQUACEL® Extra™ dressings can be left in place for up to 7 days, where clinically indicated.

AQUACEL® Extra™ Dressing can also be used in the management of the following wounds

Granulating Wound



Sloughy Wound¹



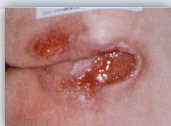
Cavity Wound²



Category 2 Pressure Ulcer



Category 3 Pressure Ulcer³



Category 4 Pressure Ulcer



Arterial Leg Ulcer



Venous Leg Ulcers



Diabetic Foot Ulcer⁴



Abscess Excision



Pilonidal Sinus Excision



Dehisced Wounds⁵



Acute Wounds



Skin Tear⁶



Exposed Tendon^{7*}



* pre-moisten with sterile saline if wound is dry

Hints and Tips**

Also available

AQUACEL® Ag+ dressings - our revolutionary Ag+ technology that destroys biofilm, kills infection causing bacteria¹ and prevents reformation*⁸⁻¹⁰



- ▶ Can be used if the wound is infected or at risk of infection (as per local policy/guidelines)
- ▶ **AQUACEL® Extra™ and AQUACEL® Ag+ Dressings can be**
 - ✓ layered to manage high levels of exudate
 - ✓ pre-moistened with sterile saline for the management of dry wounds
 - ✓ used for exudate absorption in oncology wounds eg: fungating tumours

Aquacel™

Extra

Dressing Size	Pack Size	Product Code	NHS Code	PIP Code
AQUACEL® Extra™ Dressings				
5cm x 5cm	10	420671	ELY377	367-3282
10cm x 10cm	10	420672	ELY378	367-3290
15cm x 15cm	5	420673	ELY379	367-3308
20cm x 24cm	5	423409	-	419-2258
4cm x 10cm	10	420820	ELY489	382-4760
4cm x 20cm	10	420821	ELY490	382-4778
4cm x 30cm	10	420822	ELY491	382-4786
AQUACEL® Ribbon Dressing				
1cm x 45cm	5	420127	ELY368	361-5978
2cm x 45cm	5	S7503	ELY013	240-8565

Aquacel™

Ribbon

Dressing Size	Pack Size	Product Code	NHS Code	PIP Code
1cm x 45cm <i>Ribbon</i>	5	420127	ELY368	361-5978
2cm x 45cm <i>Ribbon</i>	5	S7503	ELY013	240-8565

Aquacel™ Ag+

Extra

Dressing Size	Pack Size	Product Code	NHS Code	PIP Code
5cm x 5cm	10	413566	ELY514	386-2703
10cm x 10cm	10	413567	ELY515	386-2695
15cm x 15cm	5	413568	ELY516	386-2711
20cm x 30cm	5	413569	ELY517	386-2679
4cm x 10cm	10	413581	ELY520	386-0350
4cm x 20cm	10	413598	ELY521	386-0368
4cm x 30cm	10	413599	ELY522	386-2687

Aquacel™ Ag+

Ribbon

Dressing Size	Pack Size	Product Code	NHS Code	PIP Code
1cm x 45cm	5	413570	ELY518	386-2729
2cm x 45cm	5	413571	ELY519	386-2737

AQUACEL™ Foam

Dressing Size	Pack Size	Product Code	NHS Code	PIP Code
Non-Adhesive				
5cm x 5cm	10	420631	ELY412	369-9311
10cm x 10cm	10	420633	ELY413	369-9329
15cm x 15cm	5	420635	ELY414	370-2750
20cm x 20cm	5	420636	ELY416	370-2776
10cm x 20cm	5	421156	ELY575	394-3818
15cm x 20cm	5	420637	ELY415	370-2768
Adhesive				
8cm x 8cm	10	420804	ELY428	378-1820
10cm x 10cm	10	420680	ELY417	370-2784
12.5cm x 12.5cm	10	420619	ELY418	370-2792
17.5cm x 17.5cm	10	420621	ELY419	370-2800
21cm x 21cm	5	420623	ELY420	370-2818
8cm x 13cm	10	421149	ELY574	394-3800
10cm x 20cm	5	421150	ELY572	395-0581
10cm x 30cm	5	421154	ELY573	395-0599
25cm x 30cm	5	420624	ELY421	370-7361
Adhesive Sacral				
20cm x 16.9cm	5	420626	ELY423	370-6041
24cm x 21.5cm	5	420828	ELY565	388-5829
Adhesive Heel				
19.8cm x 14cm	5	420625	ELY422	370-7486

For more information on advanced wound dressings containing Hydrofiber® Technology go to www.convatec.com or call **0800 289 738 (UK)** or **(ROI) 1800 812 012**

Acknowledgements: 1. Reproduced with kind permission from Janice Bianchi, Lanarkshire, UK. 2. Reproduced with kind permission from Nancy Botoson, Bayshore Home Health in Windsor, UK. 3. Reproduced with kind permission from Carolyn Fox, London, UK. 4. Reproduced with kind permission from Alan Cantor, New York, USA. 5. Photos reproduced with kind permission from the Basingstoke Primary Care Trust. 6. Photos reproduced with kind permission from Jan Rice, La Trobe University, Australia. 7. Photo reproduced with kind permission from Cwm Taf. 8. Physical Disruption of Biofilm by AQUACEL® Ag+ Wound Dressing. Scientific Background Report. WHRI3850 MA232, 2013, Data on file, Convatec Inc. 9. Antimicrobial activity and prevention of biofilm reformation by AQUACEL™ Ag+ EXTRA dressing. Scientific Background Report. WHRI3857 MA236, 2013, Data on file, Convatec Inc. 10. Antimicrobial activity against CA-MRSA and prevention of biofilm reformation by AQUACEL™ Ag+ EXTRA dressing. Scientific Background Report. WHRI3875 MA239, 2013, Data on file, Convatec Inc.

† including MRSA, VRE and ESSL bacteria.

‡ as demonstrated *in-vitro*.

** See pack insert for complete instructions for use.

®/™ Indicates a trademark of ConvaTec Inc. ConvaTec Ltd is an authorised user. ©2024 Convatec Inc. AP-017229-GB WCON624v2