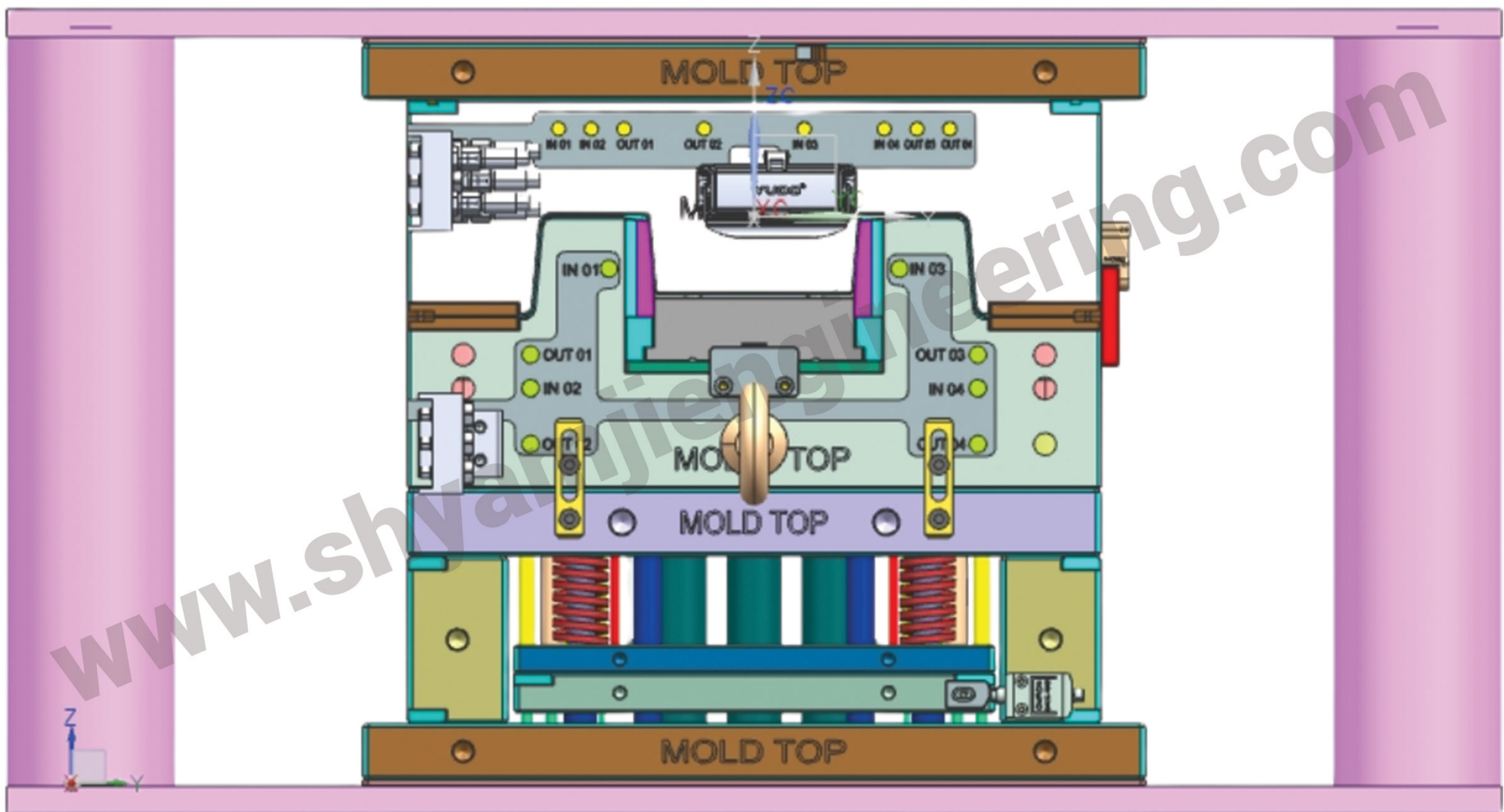




SHYAMJI ENGINEERING WORKS

(An ISO 9001:2015 Certified Company)
Perfectness & Preciseness Tooling



Enquiry Number :



+9178400 76101



marketing@shyamjiengineering.com

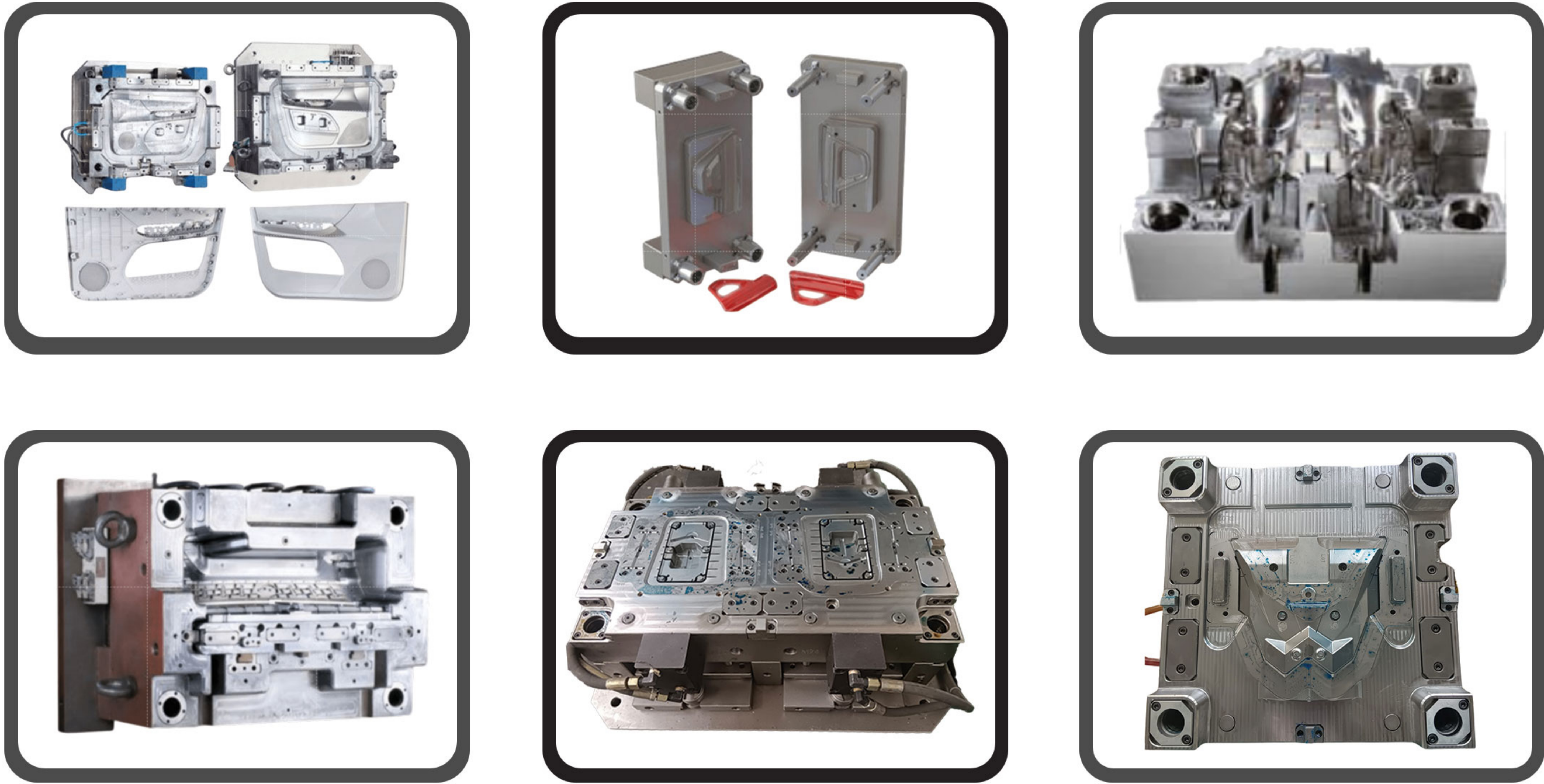


www.shyamjiengineering.com

PRODUCTS

WE DEAL WITH:

- All Head light mould
 - All Tail light mould
 - Fog lamp Mould
 - All plastic die and moulds
 - Front grill mould
- Thermoplast moulds
 - Pressure die casting moulds
 - House hold items moulds
 - BMC Mould
 - Rubber mould
 - Hot plate welding fixture



Nature Of Business	Manufacturer
No Of Staff	18
Year Of Establishment	1995
No Of Production Lines	1
OEM Service Provided	Yes



ABOUT US

INTRODUCTION

At Shyam Ji Engineering Works, we are pioneers in delivering innovative and reliable lighting solutions for the automobile industry. With a commitment to excellence and over 36 of experience, we specialize in designing and manufacturing advanced lighting systems that ensure safety, style, and sustainability. Our mission is to illuminate the roads with cutting-edge technology while prioritizing energy efficiency and customer satisfaction. Rooted in integrity and innovation, our values drive us to create products that meet global standards and enhance the driving experience for millions worldwide.

WHY CHOOSE US?

With over 36 years of expertise, Shyam Ji Engineering Works has established itself as a trusted leader in the automobile lighting sector. Our team combines extensive industry knowledge with cutting-edge innovation to deliver premium-quality lighting solutions tailored to meet diverse automotive needs. From advanced LED technologies to adaptive lighting systems, we stay at the forefront of technological advancements to enhance safety, efficiency, and style. Our commitment to precision engineering, robust R&D, and customer-centric design makes us the preferred choice for OEMs and automobile manufacturers worldwide.

CERTIFICATIONS & ACHIEVEMENTS

At **Shyam Ji Engineering Works**, we prioritize quality, safety, and reliability in every product we create. Our commitment to excellence is reflected in our prestigious **ISO 9001:2015 certification**, which ensures that our processes meet global quality management standards. We strictly adhere to international safety regulations and compliance benchmarks, guaranteeing that our lighting solutions deliver unmatched performance and reliability. Over the years, we have been honored with industry awards for innovation, energy-efficient designs, and our dedication to customer satisfaction, solidifying our reputation as a leader in the automobile lighting sector.



INNOVATION

1. HIGHLIGHT KEY TECHNOLOGIES

At Shyam Ji Engineering Works, we are proud to integrate advanced technologies into our automobile lighting solutions. Our portfolio includes **smart lighting systems** that adapt to road conditions, adaptive beam control for enhanced visibility and safety, and **energy-efficient designs** that reduce power consumption without compromising performance. These cutting-edge features ensure our products meet the demands of modern vehicles while providing unparalleled functionality.

2. SUSTAINABILITY INITIATIVES

We are deeply committed to sustainability and environmentally responsible practices. By utilizing **eco-friendly materials** and designing energy-efficient lighting solutions, we minimize environmental impact while delivering high-performance products. Our focus on green technologies reflects our dedication to creating a sustainable future for the automobile industry.

3. FUTURE VISION

Shyam Ji Engineering Works envisions a future where automobile lighting seamlessly blends safety, style, and sustainability. By leveraging emerging technologies like **AI-driven lighting systems** and **connected vehicle lighting solutions**, we aim to redefine the driving experience. Our goal is to set new benchmarks in the industry, continuously innovating to meet the evolving needs of our clients while contributing to a brighter, greener, and



OUR SERVICES



CNC VMC MACHINE I

TRAVEL SIZE
= 1060 X 610 X 610

CNC VMC MACHINE II

TRAVEL SIZE
= 800 X 500 X 500



CNC VMC MACHINE III

TRAVEL SIZE
= 800 X 600 X 600



OUR SERVICES



ZNC WIRECUT MACHINE

**CURRENT OUTPUT
35 AMPERE**

ZNC EDM MACHINE

**CURRENT OUTPUT
35 AMPERE**



INJECTION MOULDING MACHINE

250 TONNES

SHOT WIGHT (IN GRAMS) = 550

**(SPECIALIZED IN POLY CARBONATE,
PMMA, ABS, PP, NYLON GLASSFIELD
ETC.)**



SERVICES OFFERED

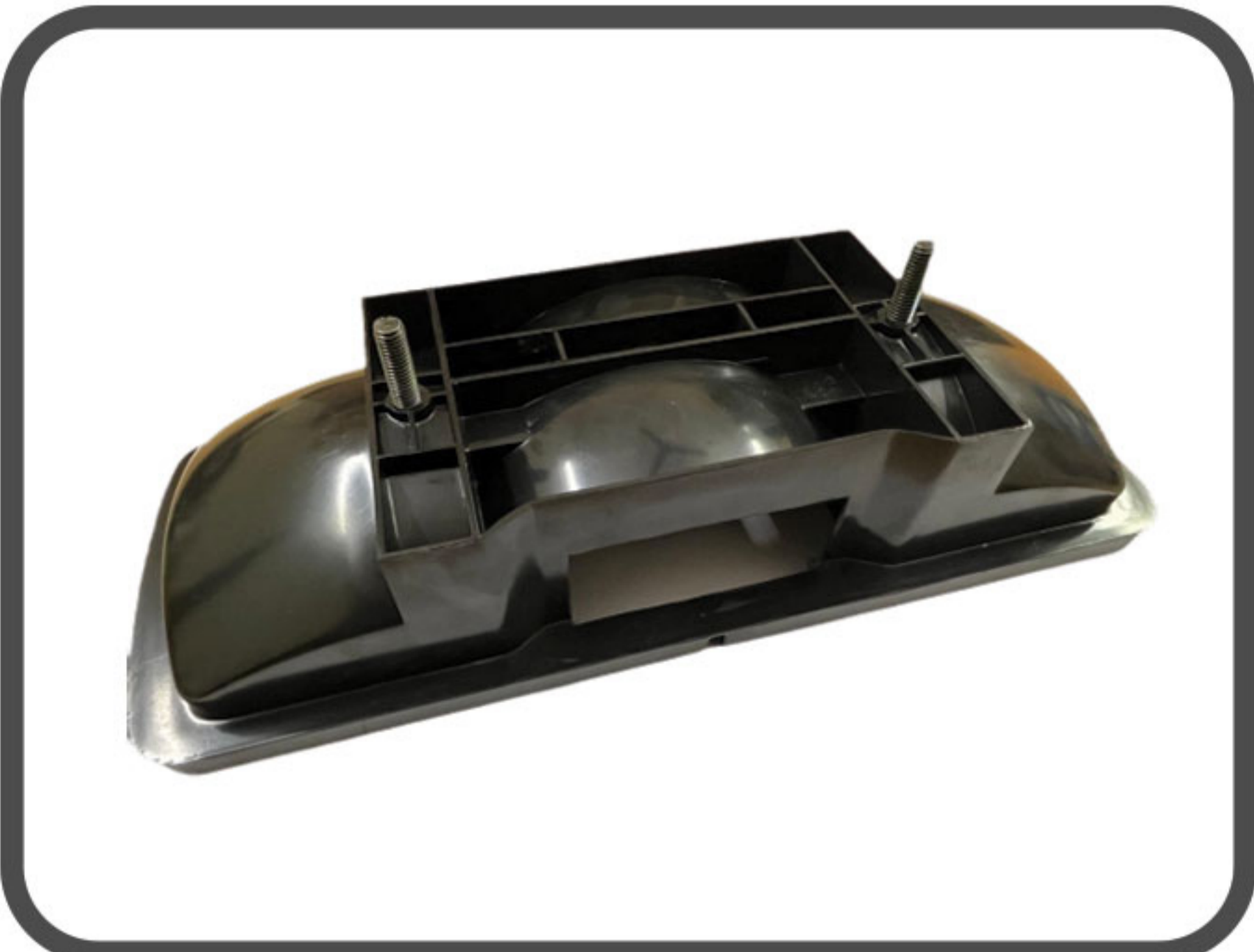
ALONG WITH THE PRODUCTS, OUR COMPANY IS ALSO RENDERING SOLUTIONS LIKE:

- Quick response to customer
- Comprehensive service and on the spot support
- Tool Support about life cycle
- Start-up Assistance
- Task Force for manufacturing and tool problems
- Tool Development
- Product Design
- Rapid Prototyping
- Reverse Engineering
- Tool Design
- Mold Flow Analysis
- Fast Response to RFQ
- Mold DFMEA
- Steel Selection Based On The Aesthetical Requirement & Moulds Life
- Weekly Updates & Tooling Project Management
- Moulds & Components Inspection Reports
- Ensure Timely Delivery Of Moulds At Customer End
- End To End Encrypted



PRODUCTS

TOOLING FOR OEM & AFTERMARKET



PRODUCTS



OUR PRODUCTS

PRODUCTS WE DEAL IN





SHYAMJI ENGINEERING WORKS

(An ISO 9001:2015 Certified Company)

Perfectness & Preciseness Tooling



Enquiry Number :



+917840076101



marketing@shyamjiengineering.com



www.shyamjiengineering.com

B-15, Sector-3, DSIIDC, Bawana Industrial Area, Delhi, India (110039).